



Printer Catalog



Company / Introduction

Since our foundation in 2011, [redacted] has grown from a paper converter into a group company that has production based in both China and Malaysia, with its subsidiary companies focus 100% on export market. Production category of [redacted] factory cover full range from thermal paper raw material coating, to label silicon coating, paper and label printing, die cut, slitting into all finished sizes. Our label products are widely used in supermarkets as shelf labels and on electric scale printers as scale labels. For different usages, Customers can choose within our full label product category, either white, yellow or blue glassine, eco thermal label or top coated thermal label. Every year [redacted] is exporting millions of shipping labels in rolls and fanfold shape to U S A and Australia. Except from label items, Thermal rolls produced in Malaysia [redacted] factory is 100% for U S A market. With agents, sole agents, warehouses established in more and more countries especially in U S A, Saudi Arabia, Nigeria, Mexico, plus its increasing product category every year, [redacted] is helping customers to win bigger market share at a rapid speed. [redacted] own brand is going to everywhere in the world. The growth and success of [redacted] International Limited is the result of our professional approach to customer.



01

ABOUT OUR PRODUCT



SL-D463B



SL-P13



SL-P11



SL-8001



SL-P80A



SL-804L



SL-P28L



SL-P29L



SL-1081



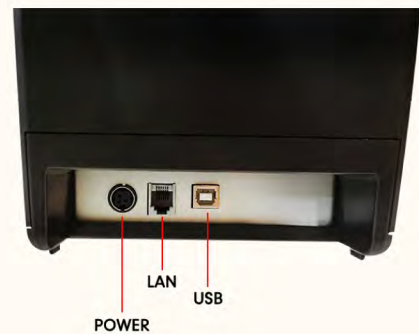
SL-58G



SL-80C

SL-80C PRINTER

- Order reminder
- Lack of paper to remind



Product volume and packing information

product name	Net weight (KG)	box size(MM)	Gross weight(KG) (box+accessories+product)
SL-80C	0.78	215*195*147	1.41
Outer packing box size(MM)	Packing quantity	Single box number (KG)	Interface
600*450*320	12	17	USB, network port (standard) USB+ serial port, USB+ network port, USB+WIFI, USB+ Bluetooth (optional)



SL-A4 PRINTER

- USB connection, ink free printing, lower cost software
- Small size easy to carry



Product volume and packing information

product name	Net weight (KG)	box size(MM)	Gross weight(KG) (box+accessories+product)
A4 printer	0.82	322*103*70	1.082
Outer packing box size(CM)	Packing quantity	Single box number (KG)	Interface
53.5*34*16.5	10	11.35	USB2.0(standard), bluetooth (standard)/WIFI(optional)

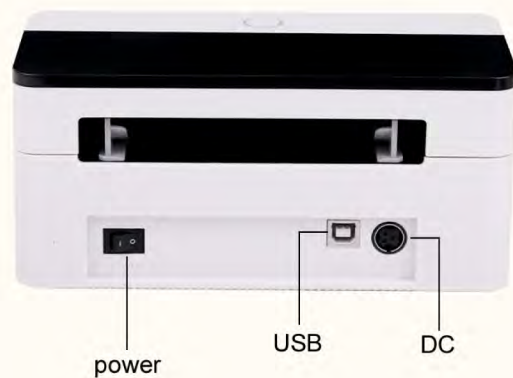


SL-D463B PRINTER

- Highly sensitive intelligent sensor automatically calibrates/measures paper

Product volume and packing information

product name	Net weight (G)	box size(MM)	Grossweight(KG) (box+accessories+product)
SL-D463B	722	235*180*140	1.48
Outer packing box size (MM)	Packing quantity	Single box number (KG)	Interface
490*380*445	12	18.86	USB2.0(standard),Bluetooth(optional),WIFI(optiona l), Cloud WIFI(optional)



SL-804L PRINTER

- Order reminder
- Lack of paper to remind



USB Cash drawer Lan

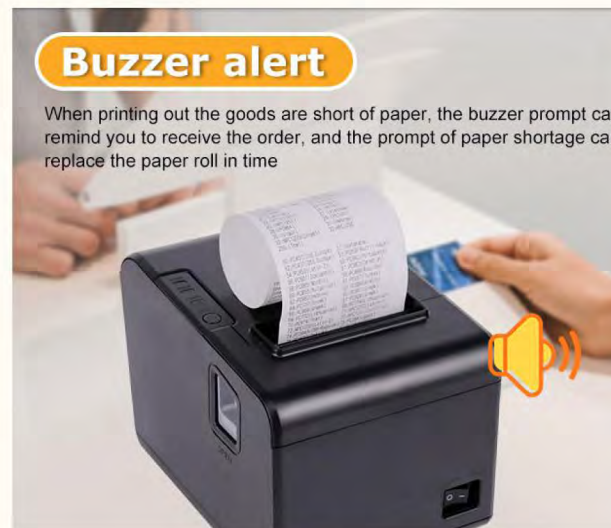


Product volume and packing information

product name	Net weight (KG)	box size(MM)	Grossweight(KG) (box+accessories+product)
SL-804L	1.0	284*170*180	1.96
Outer packing box size(MM)	Packing quantity	Single box number (KG)	Interface
590*530*390	12	23.5	Network port, USB(bluetooth /WIFI USB+ serial port, 9P serial port +USB+ network port, USB+ network port (Bluetooth /WIFI)(Bluetooth /WIFI)

Buzzer alert

When printing out the goods are short of paper, the buzzer prompt can remind you to receive the order, and the prompt of paper shortage can replace the paper roll in time



Take out



Clothing industry



Traffic police enforcement



Warehouse logistics

SL-P28L PRINTER

- Support customized colors and logos
- available for both labels and paper printing



Product volume and packing information

product name	Net weight (KG)	box size(MC)	Grossweight(KG) (box+accessories+product)
SL-P28L	0.436	13.2*13.2*11	0.6674
Outer packing box size	Packing quantity	Single box number (KG)	
69.5*29*46.5	40	27.676	



SL-P29L PRINTER

- Support customized colors and logos
- available for both labels and paper printing



Product volume and packing information

product name	Net weight (KG)	box size(MC)	Gross weight(KG) (box+accessories+product)
SL-P29L	0.432	13.2*13.2*11	0.661
Outer packing box size	Packing quantity	Single box number (KG)	
69.5*29*46.5	40	27.42	



SL-P11 PRINTER

- Support customized colors and logos



Product volume and packing information

product name	Net weight (KG)	box size(MC)	Gross weight(KG) (box+accessories+product)
SL-P11	0.274	10.5*13.3*10.5	0.474
Outer packing box size	Packing quantity	Single box number (KG)	
57*28.5*55.5	50	54.61	



SL-P8001 PRINTER



WeChat

www.sailingpaper.com

Twitter: sailing thermal paper

Linkedin: kellyhu

Facebook: sailing paper

Instagram: shenzhensailingpaper

YouTube: Sailing thermal paper



Product volume and packing information

product name	Net weight (KG)	box size(MC)	Gross weight(KG) (box+accessories+product)
SL-P8001	0.2982	13.2*13.2*11	0.5042
Outer packing box size	Packing quantity	Single box number (KG)	
69.5*29*46.5	40	21.148	

PORTABLE BLUETOOTH THERMAL PRINTER

Android/ios System



SL-1081 PRINTER

- Shipping label PRINTER
- Support customized colors and logos



Product volume and packing information

product name	Net weight (KG)	box size(MC)	Grossweight(KG) (box+accessories+product)
SL-1081	1.48	27*20*14	1.78
Outer packing box size	Packing quantity	Single box number (KG)	
53*39*42	8	13.8	

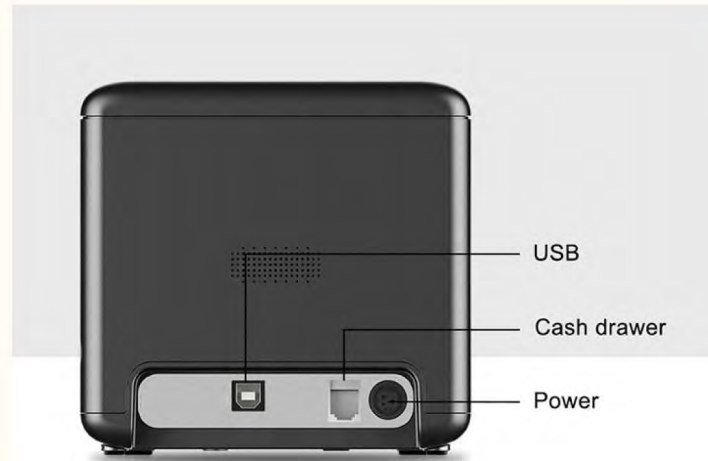


SL-P80A PRINTER

Product volume and packing information

product name	Net weight (KG)	box size(MC)	Gross weight(KG) (box+accessories+product)
SL-P80A	1.1204	22*20.5*17	1.8867
Outer packing box size	Packing quantity	Single box number (KG)	
46*45.5*37	8	15.956	

Packaging



SL-58G PRINTER

- Label printer
- You can customize receipt printing and label printing



Product volume and packing information

product name	Net weight (KG)	box size(MC)	Gross weight(KG) (box+accessories+product)
SL-58G	0.7014	18.8*18.2*14.3	1.0736
Outer packing box size	Packing quantity	Single box number (KG)	
41.5*38.1*30.8	8	9.2795	



SL-P13 PRINTER

- Label printer
- Support customized colors and logos



Product volume and packing information

product name	Net weight (KG)	box size(MC)	Gross weight(KG) (box+accessories+product)
SL-P13	0.157g	181*102*43mm	320g
Outer packing box size	Packing quantity	Single box number (KG)	
46*38*23.5	40	13.78kg	



THANK YOU FOR WATCHING

