



2020
PRODUCTS
CATALOGUE

MADE IN CHINA

COMPANY PROFILE



CO., LTD. WAS ORGANIZED IN 1985 AND IS NOW COVERING AN LAND OF 30,000.00SQM AND AN BUILDING AREA OF 20,000.00SQM. WE SPECIALLY HAVE AN RICH-EXPERIENCED STAFF TEAM AND MOSTLY-ADVANCED AUTOMATIC PRODUCTION FACILITIES, ESPECIALLY THE 100-METER LINING LINE IS THE TOPPEST AND BEST IN ALL CHINA.

WE ARE NOW MANUFACTURING AND SUPPLYING SERIES OF FIRE HOSES INCLUDING PVC-LINED, EPDM-LINED, RUBBER-LINED, PU-LINED HOSES AND NITRILE RUBBER HOSES, THE LONGEST LENGTH COULD BE 100METER PER ROLL.

ANNUALLY WE ARE SELLING OVER 15-MILLION METERS HOSES ALL AROUND THE WORLD, ESPECIALLY THE NITRILE RUBBER HOSES ARE HAVING A VERY GOOD POSITION AND REPUTATION IN THE MARKET DUE TO ITS PERFECT SPECIALITIES OF BEING TOTALLY RESISTANT AGAINST GREASE, OIL, ACIDS, ALKALIES, HEAT & FUNGUS.

THE ACCESSORIES AS COUPLINGS AND NOZZLES ARE ALSO MANUFACTURED AND SUPPLIED. COME ON HERE PLEASE, YOU MUST FIND IT AS YOUR BEST AND EXACTLY CORRECT CHOICE.

APPROVALS & CERTIFICATES

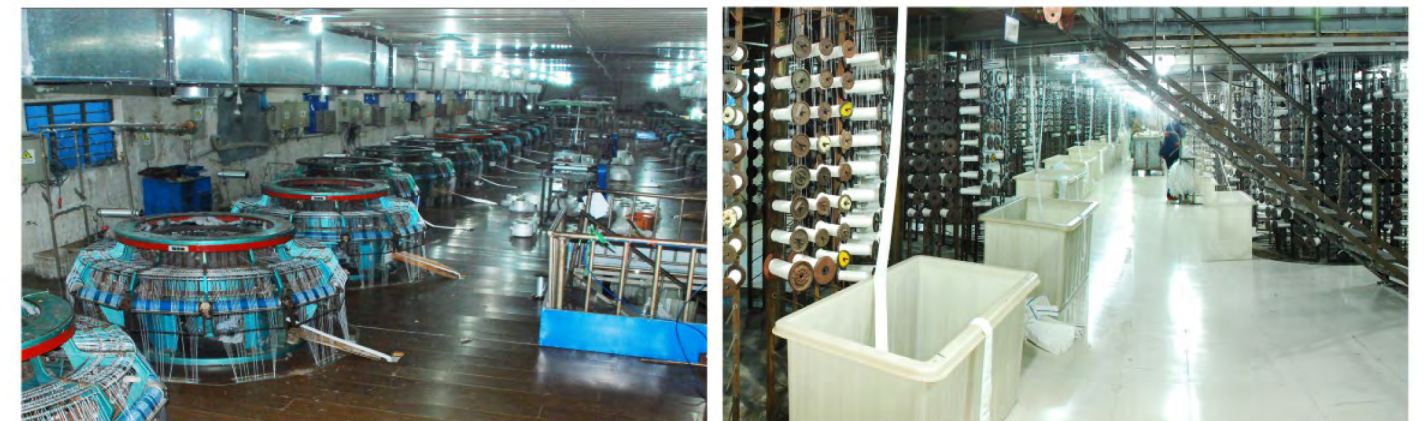


MANUFACTURING FACILITIES

100M LINING SHOP



JACKET WEAVING SHOP



PLAIN WEAVING JACKET HOSE



TYPE-1A PLAIN WEAVING JACKET HOSE

MATERIAL OF JACKET	PP/PS
MATERIAL OF LINER	PVC, EPDM, RUBBER, PU
NORMAL COLOR OF LINER	BLACK
WORKING PRESSURE	06BAR ~ 20BAR
BURSTING PRESSURE	18BAR ~ 60BAR
WORKABLE TEMPERATURES	-20°C ~ 45°C
SIZES (INSIDE DIAMETER)	19MM ~ 300MM
MAXIMUM LENGTH PER ROLL	100M



TWILL WEAVING JACKET HOSE



TYPE-1B TWILL WEAVING JACKET HOSE

MATERIAL OF JACKET	PS
MATERIAL OF LINER	PVC, EPDM, RUBBER, PU
NORMAL COLOR OF LINER	BLACK
WORKING PRESSURE	10BAR ~ 20BAR
BURSTING PRESSURE	30BAR ~ 60BAR
WORKABLE TEMPERATURES	-20°C ~ 45°C
SIZES (INSIDE DIAMETER)	25MM ~ 300MM
MAXIMUM LENGTH PER ROLL	100M

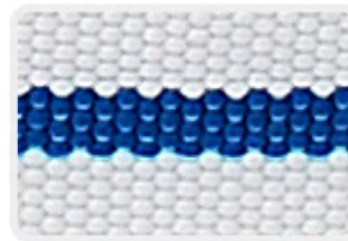


DOUBLE JACKET HOSE



TYPE-1C DOUBLE JACKET HOSE

MATERIAL OF JACKET	PP/PS
MATERIAL OF LINER	PVC, EPDM, RUBBER, PU
NORMAL COLOR OF LINER	BLACK
WORKING PRESSURE	10BAR ~ 20BAR
BURSTING PRESSURE	30BAR ~ 60BAR
WORKABLE TEMPERATURES	-45°C ~ 45°C
SIZES (INSIDE DIAMETER)	25MM ~ 300MM
MAXIMUM LENGTH PER ROLL	100M

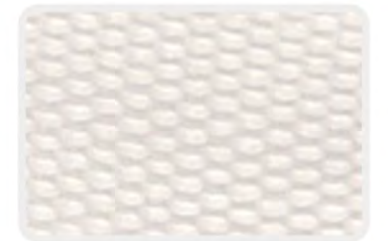


FAMILY HOSE



TYPE-1D FAMILY HOSE

MATERIAL OF JACKET	PP
MATERIAL OF LINER	PVC
NORMAL COLOR OF LINER	NO COLOR
WORKING PRESSURE	08BAR ~ 20BAR
BURSTING PRESSURE	24BAR ~ 60BAR
WORKABLE TEMPERATURES	-20°C ~ 45°C
SIZES (INSIDE DIAMETER)	19MM ~ 25MM
LENGTH PER ROLL	15M
ACCESSORIES INCLUDED	NOZZLE & CONNECTOR

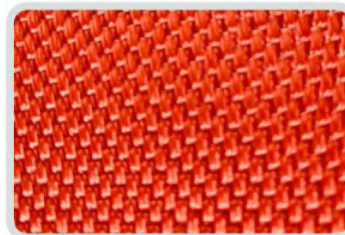


COLOR JACKET HOSE



TYPE-2A COLOR JACKET HOSE

MATERIAL OF JACKET	PS
MATERIAL OF LINER	PVC, EPDM, RUBBER, PU
NORMAL COLOR OF JACKET	RED
NORMAL COLOR OF LINER	BLACK
WORKING PRESSURE	08BAR ~ 20BAR
BURSTING PRESSURE	24BAR ~ 60BAR
WORKABLE TEMPERATURES	-20°C ~ 45°C
SIZES (INSIDE DIAMETER)	25MM ~ 300MM
MAXIMUM LENGTH PER ROLL	100M



COLOR PAINTED HOSE



TYPE-2B COLOR PAINTED HOSE

MATERIAL OF JACKET	PP/PS
MATERIAL OF LINER	PVC, EPDM, RUBBER, PU
NORMAL COLOR OF PAINTING	RED
NORMAL COLOR OF LINER	BLACK
WORKING PRESSURE	08BAR ~ 20BAR
BURSTING PRESSURE	24BAR ~ 60BAR
WORKABLE TEMPERATURES	-20°C ~ 45°C
SIZES (INSIDE DIAMETER)	40MM ~ 300MM
MAXIMUM LENGTH PER ROLL	100M



PVC HOSE



TYPE-3A PVC HOSE

MATERIAL OF JACKET	PP/PS
MATERIAL OF LINER	PVC
NORMAL COLOR OF HOSE	RED, BROWN
WORKING PRESSURE	08BAR ~ 20BAR
BURSTING PRESSURE	24BAR ~ 60BAR
WORKABLE TEMPERATURES	-20°C ~ 45°C
SIZES (INSIDE DIAMETER)	25MM ~ 300MM
MAXIMUM LENGTH PER ROLL	100M

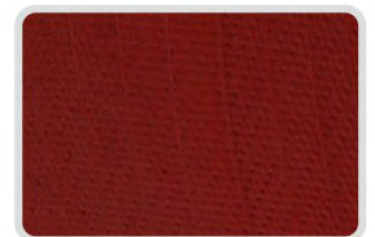


RUBBER HOSE



TYPE-3B RUBBER HOSE

MATERIAL OF JACKET	PP/PS
MATERIAL OF HOSE	NITRILE RUBBER
NORMAL COLOR OF HOSE	RED, BROWN, BLACK
WORKING PRESSURE	08BAR ~ 20BAR
BURSTING PRESSURE	24BAR ~ 60BAR
WORKABLE TEMPERATURES	-40°C ~ 45°C
SIZES (INSIDE DIAMETER)	25MM ~ 300MM
MAXIMUM LENGTH PER ROLL	100M
SPECIAL SPECIFICATION	RESISTANT AGAINST GREASE, OIL, ACIDS, ALKALIES, HEAT & FUNGUS



SEMI RIGID HOSES



TYPE-4A SEMI RIGID PU HOSE

MATERIAL OF JACKET	PS/NYLON
MATERIAL OF LINER	PU
NORMAL COLOR OF HOSE	WHITE, RED
NORMAL COLOR OF LINER	NO COLOR OR BLACK
WORKING PRESSURE	13BAR ~ 20BAR
BURSTING PRESSURE	39BAR ~ 60BAR
WORKABLE TEMPERATURES	-40°C ~ 45°C
SIZES (INSIDE DIAMETER)	19MM 25MM
MAXIMUM LENGTH PER ROLL	100M



TYPE-4B SEMI RIGID PVC HOSE

MATERIAL OF JACKET	PS
MATERIAL OF HOSE	PVC
NORMAL COLOR OF HOSE	RED, BLACK
WORKING PRESSURE	10BAR ~ 13BAR
BURSTING PRESSURE	30BAR ~ 39BAR
WORKABLE TEMPERATURES	-10°C ~ 45°C
SIZES (INSIDE DIAMETER)	19MM 25MM
MAXIMUM LENGTH PER ROLL	100M

FIRE BLANKETS

JBT-001: FIRE BLANKET WITHOUT SILICA GEL PAINTING



SIZE	PACKING QTY	CARTON DIMENSIONS	GROSS WEIGHT	SIZE	PACKING QTY	CARTON DIMENSIONS	GROSS WEIGHT		
CM	PCS/CTN	MM/CTN	KGS/CTN	CM	PCS/CTN	MM/CTN	KGS/CTN		
430G	100x100	20	440x340x310	17.00	880G	100x100	20	450x360x310	18.00
	100x120	20	440x340x310	19.00		100x120	20	450x360x310	22.00
	120x120	20	440x340x310	22.00		120x120	20	450x360x310	27.00
	120x150	20	440x340x310	23.00		120x150	20	450x360x310	32.00
	120x180	20	440x340x370	28.00		120x180	10	450x360x360	20.00
	150x150	20	440x340x370	31.00		150x150	10	450x360x360	21.00
	150x180	10	340x240x510	17.00		150x180	10	340x230x400	25.00
	150x200	10	340x240x400	18.00		150x200	10	340x220x400	27.00
	180x180	10	340x240x400	19.00		180x180	10	360x230x400	29.00
180x10000	1	1850x260x260	77.00	180x10000	1	1850x340x340	155.00		

SPECIFICATIONS MATERIAL: GLASS FIBRE
THICKNESS: 430G-0.43MM 880G-0.80MM
HIGHEST TEMPERATURE TO RESIST: 550

UNIT PACKING:
430G--HARD BOX OR SOFT BAG
880G--SOFT BAG ONLY

JBT-002: FIRE BLANKET WITH SILICA GEL PAINTING



SIZE	PACKING QTY	CARTON DIMENSIONS	GROSS WEIGHT	SIZE	PACKING QTY	CARTON DIMENSIONS	GROSS WEIGHT		
CM	PCS/CTN	MM/CTN	KGS/CTN	CM	PCS/CTN	MM/CTN	KGS/CTN		
430G	100x100	20	440x340x310	17.00	880G	100x100	20	450x360x310	18.00
	100x120	20	440x340x310	19.00		100x120	20	450x360x310	22.00
	120x120	20	440x340x310	22.00		120x120	20	450x360x310	27.00
	120x150	20	440x340x310	23.00		120x150	20	450x360x310	32.00
	120x180	20	440x340x370	28.00		120x180	10	450x360x360	20.00
	150x150	20	440x340x370	31.00		150x150	10	450x360x360	21.00
	150x180	10	340x240x510	17.00		150x180	10	340x230x400	25.00
	150x200	10	340x240x400	18.00		150x200	10	340x220x400	27.00
	180x180	10	340x240x400	19.00		180x180	10	360x230x400	29.00
180x10000	1	1850x280x280	80.00	180x10000	1	1850x350x350	160.00		

SPECIFICATIONS MATERIAL: GLASS FIBRE
THICKNESS: 430G-0.50MM 880G-1.00MM
HIGHEST TEMPERATURE TO RESIST: 550

UNIT PACKING:
430G--HARD BOX OR SOFT BAG
880G--SOFT BAG ONLY

UNIT PACKINGS OF FIRE BLANKETS



HARD BOX



SOFT BAG

FIRE COUPLINGS

STORZ COUPLING IN ALUMINUM



STORZ COUPLING IN BRASS



STORZ COUPLING WITH CAP & CHAIN



STORZ COUPLING WITH REDUCER



STORZ COUPLING WITH THREADING



STORZ SPANNER



FRENCH COUPLING



FRENCH COUPLING WITH THREADING



FIRE COUPLINGS

FRENCH COUPLING WITH CAP & CHAIN



FRENCH SPANNER



MACHINO COUPLING



JOHN MORRIS COUPLING—SHORT TAIL



JOHN MORRIS COUPLING—LONG TAIL



JOHN MORRIS COUPLING



JOHN MORRIS ADAPTOR



JOHN MORRIS COUPLING WITH OUTSIDE THREADING



FIRE COUPLINGS

JOHN MORRIS COUPLING WITH INSIDE THREADING

JCP-006FNT



SIZES:
G2"
G2.5"

JOHN MORRIS ADAPTOR WITH OUTSIDE THREADING

JCP-006MWT



SIZES:
G2"
G2.5"

JOHN MORRIS ADAPTOR WITH INSIDE THREADING

JCP-006MNT



SIZES:
G2"
G2.5"

RUSSIAN COUPLING IN ALUMINUM

JCP-007A

ALUMINUM



SIZES:
25MM
51MMx40MM
51MM
66MM
77MM

RUSSIAN COUPLING IN PLASTIC

JCP-007P

PLASTIC
ALUMINUM



SIZES:
51MM
66MM
77MM

RUSSIAN COUPLING WITH THREADING

JCP-007WT

JCP-007NT



SIZES:
G2"
G2.5"
G3"

RUSSIAN COUPLING WITH CAP & CHAIN

JCP-007C



SIZES:
51MM
66MM
77MM

RUSSIAN COUPLING WITH REDUCER

JCP-007R



SIZES:
51x25MM
66x51MM
77x51MM
77x66MM

FIRE COUPLINGS

AMERICAN COUPLING

JCP-008BS: LIGHT TYPE



SIZES:
UNI25
UNI45
UNI70

AMERICAN COUPLING

JCP-008BL: HEAVY TYPE



SIZES:
UNI25
UNI45
UNI70

AMERICAN COUPLING



JCP-008EA



JCP-008EB

SIZES:
40MM-NH
65MM-NH

SPANISH COUPLING

JCP-009



SIZES:
1.5"
2.5"

CANADIAN COUPLING

JCP-010A



SIZES:
38MM

CANADIAN COUPLING WITH THREADING

JCP-010BM

JCP-010BF



SIZES:
38MM

ARGENTINA COUPLING

JCP-011: ALUMINUM WITH RED-PAINING



SIZES:
DN40
DN45
DN65

EXPANSION STORZ COUPLING



JCP-012A



JCP-012B

SIZES:
1.5"
2.5"

FIRE NOZZLES

GERMAN NOZZLE
 JSG-001AS
 19MM
 25MM



GERMAN NOZZLE
 JSG-001AL
 19MM
 25MM



GERMAN NOZZLE
 JSG-001B: G1"



GERMAN NOZZLE
 JSG-001C: 2" 2.5"



GERMAN NOZZLE
 JSG-001D: 1.5" 2" 2.5"



GERMAN NOZZLE
 JSG-001ES: 1.5" 2" 2.5"



GERMAN NOZZLE
 JSG-001EL: 1.5" 2" 2.5"



GERMAN NOZZLE
 JSG-001FS: 1.5" 2" 2.5"



GERMAN NOZZLE
 JSG-001FL: 2" 2.5"



FIRE NOZZLES

GERMAN NOZZLE
 JSG-001G: 2" 2.5"



GERMAN NOZZLE
 JSG-001K: 2" 2.5"



GERMAN NOZZLE
 JSG-001H:
 SIZE:2.5"
 3"
 MATERIAL:
 ALUMINUM



BRITISH NOZZLE
 JSG-002A: 1.5" 2.5"



BRITISH NOZZLE
 JSG-002BS: 1.5" 2.5"



BRITISH NOZZLE
 JSG-002BL: 2.5"



BRITISH NOZZLE
 JSG-002DS: 2.5" JSG-002DL: 2.5"



BRITISH NOZZLE
 JSG-002E: 2.5"



BRITISH NOZZLE
 JSG-002GS: 2.5" JSG-002GL: 2.5"



FIRE NOZZLES

FIRE NOZZLES

BRITISH NOZZLE
JSG-002H
SIZE: 2.5"



BRITISH NOZZLE
JSG-002K
SIZE: 2.5"



BLACK PIPE RED PIPE

AMERICAN NOZZLE
JSG-003B:
SIZE: G2" G2.5"
INSIDE THREADING
CONNECTOR



FRENCH NOZZLE
JSG-004E: 45MM 70MM



RUSSIAN NOZZLE
JSG-005A: 51MM



RUSSIAN NOZZLE
JSG-005B: 51MM 66MM



AMERICAN NOZZLE
JSG-003D M85×6



AMERICAN NOZZLE
JSG-003E M56×4



FRENCH NOZZLE
JSG-004A: 45MM



RUSSIAN NOZZLE
JSG-005C: 51MM 66MM



RUSSIAN NOZZLE
JSG-005D: 51MM 66MM



RUSSIAN NOZZLE
JSG-005E: 51MM 66MM



FRENCH NOZZLE
JSG-004B: 45MM



FRENCH NOZZLE
JSG-004C: 45MM



FRENCH NOZZLE
JSG-004D: 45MM



ITALIAN NOZZLE
JSG-006B: M56×4



ARGENTINA NOZZLE
JSG-011A: SHARP TIP



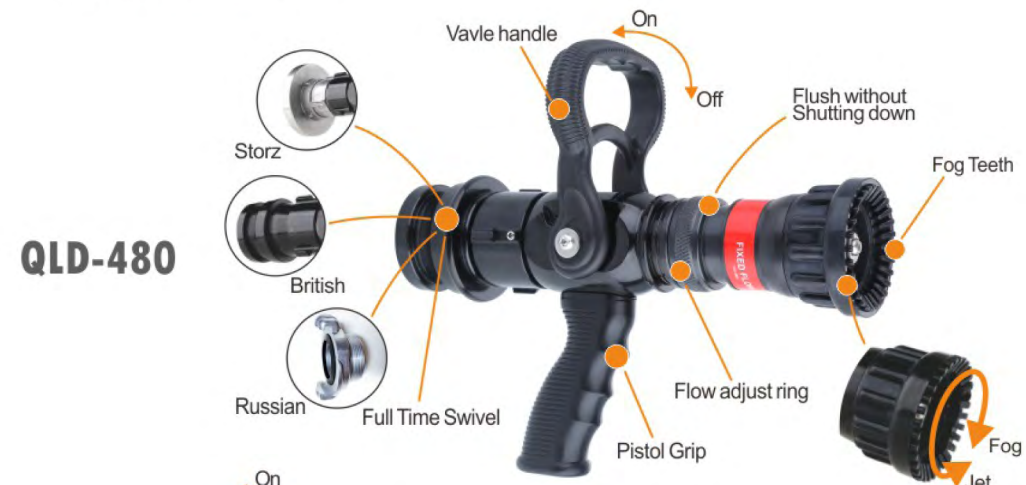
ARGENTINA NOZZLE
JSG-011B: THREADED TIP



MULTI-FUNCTION NOZZLES



QLD-300



QLD-480



QLD-500



QLD-600



QLD-700



QLD-1000

Model Number	Connector Size	Normal Flow Rate	Maximum Flow Rate	Working Pressure	Net Weight	Minimum Jet Distance
QLD-300	1" 1.5" 2"	150-300LPM	300LPM	100PSI (7 bar)	1.3KG	25M
QLD-480	1.5" 2" 2.5"	150-480LPM	480LPM	100PSI (7 bar)	1.9KG	25M
QLD-500	1.5" 2" 2.5"	150-350LPM	500LPM	100PSI (7 bar)	1.6KG	25M

Model Number	Connector Size	Normal Flow Rate	Maximum Flow Rate	Working Pressure	Net Weight	Minimum Jet Distance
QLD-600	1.5" 2" 2.5"	150-450LPM	600LPM	100PSI (7 bar)	1.7KG	25M
QLD-700	1.5" 2" 2.5" 3"	150-540LPM	700LPM	100PSI (7 bar)	2.1KG	25M
QLD-1000	1.5" 2" 2.5" 3"	150-660LPM	1000LPM	100PSI (7 bar)	2.3KG	25M