

# Company Profile



located in Province, China, is strategically located. Is a rich whiteboard, blackboard and accessories production experience, is set production, sales, design in one of the production-oriented manufacturers. Main Production Whiteboard, blackboard, whiteboard frame, eraser and its accessories. The factory covers an area of 10,000 square meters + , the company currently has 98 employees, the main production machine as many as 28, monthly output of 500000 pieces. The company also supports processing, customization, OEM, labeling, spot products within 48 hours of shipment, custom products 5 days shipment. The company has a complete and scientific quality management system, and through the IOS quality certification management, BSCI senior factory. PRODUCT AFTER-SALES: 15-day return without reason and free sample service business philosophy: the secret of enterprise success lies in the talent, products, service three quality. Enterprise purpose: to Survive by quality, to service for development, to management for efficiency. Corporate Vision: Bit By bit to create success, with one mind to build brilliant. The company always adhere to the "quality-oriented, customer first, quality service, abide by the contract, " the purpose of relying on high-quality products, good reputation, quality service. Wholeheartedly with domestic and foreign businessmen win-win cooperation, common development, create brilliant.



Cutting workshop



automatic roller cote workshop



recombination workshop



Shrinking packing workshop



packing workshop



warehouse



## Contents

- |                                 |  |                                 |
|---------------------------------|--|---------------------------------|
| 01 挂式白板类<br>Hanging whiteboard  | 09 移动白板<br>Mobile whiteboard           | 15 水溶性粉笔<br>Water soluble chalk |
| 04 告示板<br>Notice board          | 09 五爪架<br>Flipchart stand              | 16 白板笔<br>Whiteboard pen        |
| 04 玻璃白板<br>Glass whiteboard     | 10 圆盘架<br>Flipchart stand              | 19 EVA板擦<br>EVA Eraser          |
| 05 无框白板<br>Frameless whiteboard | 10 U型画板<br>Kids drawing board          | 25 冰箱贴 田字格<br>Fridge Magnet     |
| 07 卡通板<br>Cartoon board         | 11 三脚架类<br>Flipchart stand             | 27 磁钉<br>Magnetic nail          |
| 08 木框画架<br>Wooden frame easel   | 13 白板架 挂纸<br>Whiteboard Stand<br>Paper | 28 字母磁贴<br>Alphabet tiles       |



## 挂式白板类 Hanging whiteboard



货号: H系列  
尺寸: 20×30cm; 30×40cm; 40×60cm; 50×70cm; 60×90cm;  
90×120cm; 100×150cm; 100×200cm; 120×120cm;  
120×180cm; 120×200cm; 120×240cm (可定制)

可选颜色: 白色 绿色 黑色  
特点: 三层烤漆; 氧化边框; 移动挂钩, 笔托可拆卸  
夹层: 七层纸板, 蜂窝纸板, MDF板可选

Item no: H#  
Size: 20×30cm; 30×40cm; 40×60cm; 50×70cm; 60×90cm;  
90×120cm; 100×150cm; 100×200cm; 120×120cm;  
120×180cm; 120×200cm; 120×240cm (custom design)

Color: White Green Black  
Features: Three layers of baking varnish; Oxidized border;  
Movable hook and detachable pen holder  
Interlayer: 7-layer board, honeycomb board, MDF board optional



货号: 铝合金边框系列  
尺寸: 20×30cm; 30×40cm; 40×60cm; 50×70cm; 60×90cm;  
90×120cm; 100×150cm; 100×200cm; 120×120cm;  
120×180cm; 120×200cm; 120×240cm (可定制)

可选颜色: 白色 绿色 黑色  
特点: 三层烤漆; 氧化边框; 移动挂钩, 笔托可拆卸  
夹层: 泡沫, 七层纸板, 蜂窝纸板, MDF板可选

Item no: S#  
Size: 20×30cm; 30×40cm; 40×60cm; 50×70cm; 60×90cm;  
90×120cm; 100×150cm; 100×200cm; 120×120cm;  
120×180cm; 120×200cm; 120×240cm (custom design)

Color: White Green Black  
Features: Three layers of baking varnish; Oxidized border;  
Movable hook and detachable pen holder  
Interlayer: 7-layer board, honeycomb board, MDF board optional



货号: N2系列  
尺寸: 20×30cm; 30×40cm; 40×60cm; 50×70cm; 60×90cm;  
90×120cm; 100×150cm; 100×200cm; 120×120cm;  
120×180cm; 120×200cm; 120×240cm (可定制)

可选颜色: 白色 绿色 黑色  
特点: 三层烤漆; 氧化边框; 移动挂钩, 笔托可拆卸  
夹层: 七层纸板, 蜂窝纸板, MDF板可选

Item no: N2#  
Size: 20×30cm; 30×40cm; 40×60cm; 50×70cm; 60×90cm;  
90×120cm; 100×150cm; 100×200cm; 120×120cm;  
120×180cm; 120×200cm; 120×240cm (custom design)

Color: White Green Black  
Features: Three layers of baking varnish; Oxidized border;  
Movable hook and detachable pen holder  
Interlayer: 7-layer board, honeycomb board, MDF board optional



货号: 新包角系列  
尺寸: 20×30cm; 30×40cm; 40×60cm; 50×70cm; 60×90cm;  
90×120cm; 100×150cm; 100×200cm; 120×120cm;  
120×180cm; 120×200cm; 120×240cm (可定制)

可选颜色: 白色 绿色 黑色  
特点: 三层烤漆; 氧化边框; 移动挂钩, 笔托可拆卸  
夹层: 泡沫, 七层纸板, 蜂窝纸板, MDF板可选

Item no: XBJ#  
Size: 20×30cm; 30×40cm; 40×60cm; 50×70cm; 60×90cm;  
90×120cm; 100×150cm; 100×200cm; 120×120cm;  
120×180cm; 120×200cm; 120×240cm (custom design)

Color: White Green Black  
Features: Three layers of baking varnish; Oxidized border;  
Movable hook and detachable pen holder  
Interlayer: 7-layer board, honeycomb board, MDF board optional



货号: 宽边系列  
尺寸: 20×30cm; 30×40cm; 40×60cm; 50×70cm; 60×90cm;  
90×120cm; 100×150cm; 100×200cm; 120×120cm;  
120×180cm; 120×200cm; 120×240cm (可定制)

可选颜色: 白色 绿色 黑色  
特点: 三层烤漆; 氧化边框; 移动挂钩, 笔托可拆卸  
夹层: 泡沫 2.3cm

Item no: K#  
Size: 20×30cm; 30×40cm; 40×60cm; 50×70cm; 60×90cm;  
90×120cm; 100×150cm; 100×200cm; 120×120cm;  
120×180cm; 120×200cm; 120×240cm (custom design)

Color: White Green Black  
Features: Three layers of baking varnish; Oxidized border;  
Movable hook and detachable pen holder  
Sandwich: Foam 2.3cm





货号: 半圆系列  
尺寸: 20×30; 30×40; 40×60; 50×70; 60×90;  
90×120; 100×150; 100×200; 120×120;  
120×180; 120×200; 120×240 (可定制)  
可选颜色: 白色 绿色 黑色  
特点: 三层烤漆; 磨砂边框; 移动挂钩, 笔托可拆卸  
夹层: 七层纸板, 蜂窝纸板, MDF板可选

Item no: B#  
Size: 20×30cm; 30×40cm; 40×60cm; 50×70cm; 60×90cm;  
90×120cm; 100×150cm; 100×200cm; 120×120cm;  
120×180cm; 120×200cm; 120×240cm (custom design)  
Color: White Green Black  
Features: Three layers of baking varnish; Frosted frame;  
Movable hook and detachable pen holder  
Interlayer: 7-layer board, honeycomb board, MDF board optional



货号: 彩色边框系列  
尺寸: 20×30cm; 30×40cm; 40×60cm; 50×70cm; 60×90cm;  
90×120cm; 100×150cm; 100×200cm; 120×120cm;  
120×180cm; 120×200cm; 120×240cm (可定制)  
可选颜色: 白色 绿色 黑色  
特点: 三层烤漆; 氧化边框; 移动挂钩, 笔托可拆卸  
夹层: 七层纸板, 蜂窝纸板, MDF板可选

Item no: C#  
Size: 20×30cm; 30×40cm; 40×60cm; 50×70cm; 60×90cm;  
90×120cm; 100×150cm; 100×200cm; 120×120cm;  
120×180cm; 120×200cm; 120×240cm (custom design)  
Color: White Green Black  
Features: Three layers of baking varnish; Oxidized border;  
Movable hook and detachable pen holder  
Interlayer: 7-layer board, honeycomb board, MDF board optional



货号: 仿钢边系列 (F)  
尺寸: 20×30cm; 25×35cm; 30×40cm; 35×50cm;  
45×60cm; 50×70cm; 60×80cm; 60×90cm;  
可选颜色: 白色 绿色 黑色  
特点: 小巧方便携带, 办公首选, 三层烤漆; 氧化边框; 固定挂钩,  
夹层: 加硬5层纸板。

Item no: F#  
Size: 20×30cm; 25×35cm; 30×40cm; 35×50cm;  
45×60cm; 50×70cm; 60×80cm; 60×90cm;  
Color: White Green Black  
Features: compact and portable, the first choice for office,  
Three coats of baking varnish; Oxidized border;  
Fix the hook,  
Interlayer: Stiffen 5 layers of cardboard.

## 告示板类 Notice board



品名: 多用告示板  
货号: DYGSB#  
边框: 铝合金边框, 半圆边框, H边框, 宽边, N2边, 新N2边  
板面材料: 红布, 蓝布, 绿布, 软木, 白板  
规格: 30\*40,35\*50,40\*60,45\*60,50\*70, 60\*80,60\*90,  
70\*100,80\*120, 90\*120,90\*150,90\*180  
铝框和ABS塑料角厚度17mm  
夹层常用七层瓦楞纸板  
底板常用镀锌板

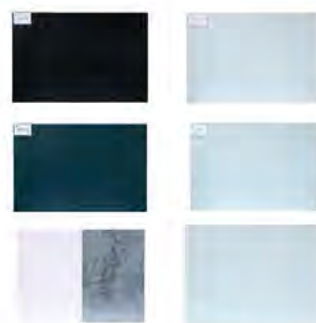
Brand name: Multi-purpose Bulletin Board  
Item no: DYGSB#  
Border: Aluminum Alloy border, semi-circular border, h border,  
wide edge, N2 edge, new N2 edge  
Panel material: Red Cloth, blue cloth, green cloth, Cork, White Board  
Specifications: 30 \* 40,35 \* 50,40 \* 60,45 \* 60,50 \* 70,60 \* 80,60 \* 90,  
70 \* 100,80 \* 120,90 \* 120,90 \* 150,90 \* 180  
Aluminum frame and ABS plastic angle thickness 17 mm  
Sandwich commonly used seven layers of corrugated cardboard  
Galvanized sheet is commonly used for base plate



品名: 告示板  
货号: GSB#  
边框: 铝合金边框, 半圆边框, H边框, 宽边, N2边, 新N2边  
布面颜色: 蓝色, 绿色, 红色  
规格: 30\*40,35\*50,40\*60,45\*60,50\*70, 60\*80,60\*90,  
70\*100,80\*120, 90\*120,90\*150,90\*180  
铝框和ABS塑料角厚度17mm  
夹层常用七层瓦楞纸板  
底板常用镀锌板  
可配图书钉, 挂绳

Brand name: notice board  
Item no: GSB#  
Border: Aluminum Alloy border, semi-circular border, h border,  
wide edge, N2 edge, new N2 edge  
Cloth color: blue, green, red  
Specifications: 30 \* 40,35 \* 50,40 \* 60,45 \* 60,50 \* 70,60 \* 80,  
60 \* 90,70 \* 100,80 \* 120,90 \* 120,90 \* 150,90 \* 180  
Aluminum frame and ABS plastic angle thickness 17 mm  
Sandwich commonly used seven layers of corrugated cardboard  
Galvanized sheet is commonly used for base plate  
Can Be equipped with a book nail, lanyard

## 玻璃白板 Glass whiteboard



品名: 玻璃白板 (无框)  
货号: BLB#  
规格: 45\*60, 60\*90, 80\*120,90\*120,100\*150,  
100\*200,120\*180,120\*200,120\*240,  
装箱数: 1PCS  
颜色: 白色, 绿色, 黑色  
磁性: 可以带磁  
材料: 强化防爆玻璃  
特点: 硬度高, 反光率低, 容易擦拭, 投影清晰

Product name: Glass Whiteboard (frameless)  
Item no: BLB#  
Size: 45\*60, 60\*90, 80\*120,90\*120,100\*150,  
100\*200,120\*180,120\*200,120\*240  
QTY:1PCS  
Color:white ,green,black  
Magnetism: can carry magnetism  
Material: Reinforced explosion-proof glass  
FEATURES: High Hardness, low reflectivity,  
easy to clean, clear projection



## 无框白板 Frameless whiteboard



品名: 磁性单面白板  
货号: DCDB  
规格: 29\*29cm  
板面自定义双色彩印  
无框  
产品厚度10.0mm  
可配磁钉, 白板笔, 背胶

Name:Magnetic one-sided whiteboard  
Item no:DCDB  
Size:29\*29cm  
CUSTOM TWO-COLOR PLATE PRINTING  
Frameless  
Product thickness 10.0 mm  
With magnetic nails, whiteboard pen, back glue



品名: 无磁双面白板  
货号: WCSB  
规格: 15\*23cm  
板面自定义一色印刷  
无框  
产品厚度3.0mm  
可配白板笔使用

Name: non-magnetic double-sided whiteboard  
Item no:WCSB  
Size:15\*23cm  
Panel custom one-color printing  
Frameless  
Product thickness 3.0 mm  
Can Be used with a whiteboard pen



品名: 无磁双面黑板  
货号: WCSH  
规格: 15\*23cm  
板面自定义一色印刷  
无框  
产品厚度3.0mm

Name: non-magnetic double-sided Blackboard  
Item no:WCSH  
Size:15\*23cm  
Panel custom one-color printing  
Frameless  
Product thickness 3.0 mm

## 木框告示板 Wooden frame Notice board



品名: 木框白板  
货号: MKR#  
边框材质: 松木  
面板: 磁性书写白板, 配合白板笔使用  
纸板底  
吸塑包装  
配挂绳  
规格: 20\*30, ,30\*40, 40\*60,50\*70,60\*90

Product name: Wooden Frame Whiteboard  
Item no :MKR#  
Frame material: Pine  
Panel: Magnetic Writing Whiteboard, use with whiteboard pen  
Paperboard base  
Blister packaging  
LANYARD  
Size:20\*30cm, ,30\*40cm, 40\*60cm,50\*70cm,60\*90cm



品名: 木框黑板  
货号: MKH#  
边框材质: 松木  
面板: 不带磁性黑板, 配合粉笔使用  
纸板底  
吸塑包装  
配挂绳  
规格: 20\*30, ,30\*40, 40\*60,50\*70,60\*90

Product name: Wooden Frame Blackboard  
Item no :MKH#  
Frame material: Pine  
Panel: No magnetic blackboard, use with chalk  
Paperboard base  
Blister packaging  
LANYARD  
Size:20\*30cm, ,30\*40cm, 40\*60cm,50\*70cm,60\*90cm



品名: 木框软木  
货号: MKR#  
边框材质: 松木  
面板: 软木  
纸板底  
吸塑包装  
配挂绳  
规格: 20\*30, ,30\*40, 40\*60,50\*70,60\*90

Product name: Wood Frame Cork  
Item no :MKR#  
Frame material: Pine  
Panel: Cork  
Paperboard base  
Blister packaging  
LANYARD  
Size:20\*30cm, ,30\*40cm, 40\*60cm,50\*70cm,60\*90cm



## 卡通板类 Cartoon board



KTB-001

KTB-002

品名: 卡通画板  
 货号: KTB#  
 边框材质: 塑料  
 面板: 磁性可书写板/不带磁性书写纸/密度板  
 印刷内容欢迎定制, 数量3000片起  
 可配挂绳、磁粒和白板笔  
 厚度规格: 6mm /10mm  
 面板规格: 15\*20,18\*25,20\*30,25\*35,30\*40,35\*50,40\*54

Product name: Cartoon Drawing Board  
 Item no:KTB#  
 Frame material: Plastic  
 Panel: Magnetic writable panel / non-magnetic writing paper/MDF  
 Print content is welcome to customize, the number of 3000 from  
 Can Be equipped with Lanyard, magnetic particle and Whiteboard pen  
 Thickness Specification: 6mm / 10mm  
 Panel Size: 15 \* 20,18 \* 25,20 \* 30,25 \* 35,30 \* 40,35 \* 50,40 \* 54



KTB-003



KTB-004



KTB-005



KTB-006



KTB-007



KTB-008



KTB-009



KTB-010



KTB-011



KTB-012



KTB-013



KTB-014



KTB-015



KTB-016



KTB-017

## 木框画架



品名: 木框画架  
 货号: 80  
 双面白绿  
 底下有置物架  
 单个盒装  
 面板尺寸: 45\*45  
 装箱数: 5  
 Name:Wooden frame  
 Item no:80  
 One White, one green  
 There's a shelf down there  
 Single box  
 Panel Size: 45\*45  
 Number of containers: 5



品名: 木框画架  
 货号: 90  
 双面白绿  
 底下有置物架  
 单个盒装  
 面板尺寸: 52\*55  
 装箱数: 5  
 Name:Wooden frame  
 Item no:90  
 One White, one green  
 There's a shelf down there  
 Single box  
 Panel Size: 52 \* 55  
 Number of containers: 5



品名: 木框画架  
 货号: 108升降  
 双面白绿  
 底下有置物架  
 单个盒装  
 面板尺寸: 45\*45  
 装箱数: 5  
 Name:Wooden frame  
 Item no:108  
 One White, one green  
 There's a shelf down there  
 Single box  
 Panel Size:45\*45  
 Number of containers: 5



品名: 木框画架  
 货号: 115升降  
 双面白绿  
 底下有置物架  
 单个盒装  
 面板尺寸: 52\*55  
 装箱数: 5  
 Name:Wooden frame  
 Item no:115  
 One White, one green  
 There's a shelf down there  
 Single box  
 Panel Size:52\*55  
 Number of containers: 5



## 移动白板 Mobile whiteboard



品名: 移动白板套装  
 货号: YDBT  
 规格: 90\*120,100\*150,90\*150,  
 接受定制  
 特点: 磁性书写白板, 镀锌底, 铁制架子, 铝合金边框ABS包角

Product name: Mobile Whiteboard set  
 Item no: YDBT  
 Size :90\*120,100\*150,90\*150  
 Accept customization  
 FEATURES: Magnetic Writing Whiteboard, galvanized bottom, iron frame, aluminum alloy frame ABS wrap angle



## 圆盘架 Flipchart stand



货号: 圆盘架-YPJ  
 规格: 70\*100,60\*90  
 挂纸板可调节高度在170cm-200cm之间  
 特点: 磁性书写白板;  
 挂纸板底板选用7层瓦楞纸  
 圆盘底, 滑轮可锁定  
 纸夹内有两个活动挂钩  
 挂纸板的纸夹和笔托均为铝合金, 可拆卸  
 此产品和底座一体装箱, 一箱一套  
 边框颜色: 黑色/白色

ITEM :YPJ  
 Size:70\*100cm /60\*90cm  
 Elevation: Before 170-200 cm  
 Features: Magnetic Writing Whiteboard  
 7 layers of corrugated paper are selected for the paperboard base board  
 Round Chassis, pulleys lockable  
 2 activity hooks under the paper clip.  
 Aluminum gripper and pen holder  
 Whiteboard and chassis for one set, one single package  
 Border Color: blackwhite

## 五爪架 Flipchart stand



货号: 五爪架-WZJ  
 规格: 70\*100,60\*90  
 挂纸板可调节高度在170cm-200cm之间  
 特点: 磁性书写白板;  
 挂纸板底板选用7层瓦楞纸  
 五爪底, 滑轮可锁定  
 纸夹内有两个活动挂钩  
 挂纸板的纸夹和笔托均为铝合金, 可拆卸  
 此产品和底座一体装箱, 一箱一套  
 边框颜色: 黑色/白色

Item no:WZJ  
 Size:70\*100cm,60\*90cm  
 Elevation: Before 170-200 cm  
 Features: Magnetic Writing Whiteboard  
 7 layers of corrugated paper are selected for the paperboard base board  
 Five claw bottom, pulley can be locked  
 2 activity hooks under the paper clip.  
 Aluminum gripper and pen holder  
 Whiteboard and chassis for one set, one single package  
 Border Color: blackwhite

## U型画板 Kids drawing board



品名: U型画架  
 货号: UJ#  
 规格: 58\*63cm,58\*73cm,48\*53cm,48\*63cm  
 面板: 绿色, 白色  
 夹层: 瓦楞纸, 密度板, 蜂窝板  
 包装: 散装, 独立包装均可  
 边框: 塑料  
 升高高度: 45cm-100cm  
 可360度旋转

Name :U-FRAME  
 Item no:UJ#  
 Size:58\*63cm,58\*73cm,48\*53cm,48\*63cm  
 Faceplate:green,white  
 INTERLAYER: Corrugated Paper; Density Board, Honeycomb Board  
 Packing: In bulk or in separate package  
 FRAME: Plastic  
 Elevation: 45 CM-100 CM  
 Can rotate 360 degrees





## 三脚架类 Flipchart stand



品名：95款三脚架  
 货号：95SJ  
 挂纸版面书写面积约为60\*90cm/70\*100  
 挂纸板可调高度在95-161cm之间  
 特点：磁性书写白板  
 挂纸板底板选用7层瓦楞纸  
 钢铁底座  
 挂纸板的纸夹和笔托均为铝合金  
 边框颜色：黑色/白色

Name: 95 tripod  
 Item no :95SJ  
 The writing area of the paper cover is about 60 \* 90cm / 70 \* 100  
 Elevation: Before 95-161 cm  
 Features: Magnetic Writing Whiteboard  
 7 layers of corrugated paper are selected for the paperboard base board  
 Steel base  
 The paper clip and pen holder of the paperboard are aluminum alloy  
 Border Color: blackwhite



品名：97款三脚架  
 货号：97SJ  
 挂纸版面书写面积约为60\*90cm/70\*100  
 挂纸板可调高度在95-161cm之间  
 特点：磁性书写白板  
 挂纸板底板选用7层瓦楞纸  
 钢铁底座  
 挂纸板的纸夹和笔托均为铝合金  
 边框颜色：黑色/白色

Name: 97 tripod  
 Item no :97SJ  
 The writing area of the paper cover is about 60 \* 90cm / 70 \* 100  
 Elevation: Before 95-161 cm  
 Features: Magnetic Writing Whiteboard  
 7 layers of corrugated paper are selected for the paperboard base board  
 Steel base  
 The paper clip and pen holder of the paperboard are aluminum alloy  
 Border Color: blackwhite



品名：进口高级告示板  
 货号：GJSJ  
 挂纸版面书写面积约为70\*100  
 挂纸板可调高度在100-165cm之间  
 特点：磁性书写白板  
 挂纸板底板选用7层瓦楞纸  
 钢铁底座  
 边框颜色：白色

Name: Import Advanced Notice Board  
 Item no :GJSJ  
 The writing area of the paper cover is about 70 \* 100  
 Elevation: Before 100-165 cm  
 Features: Magnetic Writing Whiteboard  
 7 layers of corrugated paper are selected for the paperboard base board  
 Steel base  
 The paper clip and pen holder of the paperboard are aluminum alloy  
 Border Color:white



品名：铝合金告示架  
 货号：LHJSJ  
 挂纸版面书写面积约为60\*90cm/70\*100  
 挂纸板可调高度在100-165cm之间  
 特点：磁性书写白板  
 挂纸板底板选用7层瓦楞纸  
 钢铁底座  
 挂纸板的纸夹和笔托均为铝合金  
 边框颜色：白色

Name: Aluminum Alloy display frame  
 Item no :LHJSJ  
 The writing area of the paper cover is about 60 \* 90cm / 70 \* 100  
 The adjustable height of paperboard is between 100-165CM / 100-170cm  
 Features: Magnetic Writing Whiteboard  
 7 layers of corrugated paper are selected for the paperboard base board  
 Steel base  
 The paper clip and pen holder of the paperboard are aluminum alloy  
 Border Color: white



品名：铁质三脚架  
 货号：TZSJ  
 挂纸版面书写面积约为60\*90cm/70\*100  
 挂纸板可调高度在100-165cm之间  
 特点：磁性书写白板  
 挂纸板底板选用7层瓦楞纸  
 钢铁底座  
 挂纸板的纸夹和笔托均为铝合金  
 边框颜色：黑色/白色

Name: Iron tripod  
 Item no :TZSJ  
 The writing area of the paper cover is about 60 \* 90cm / 70 \* 100  
 Elevation: Before 100-165 cm  
 Features: Magnetic Writing Whiteboard  
 7 layers of corrugated paper are selected for the paperboard base board  
 Steel base  
 The paper clip and pen holder of the paperboard are aluminum alloy  
 Border Color: black/white

## 画架 Easel



品名：小画板支架  
 货号:SYJ#  
 材质：铝，铁，塑料  
 可升高60-180cm  
 管形：半圆管22mm  
 包装：单个包装，可选纸盒  
 颜色：黑，银，红，蓝，紫，绿，金，香槟

Name: small easel stand  
 Item no: SYJ#  
 Material: aluminum, iron, plastic  
 Can Rise 60-180 cm  
 Tube shape: semicircular tube 22mm  
 Packing: single packing, Optional Carton  
 Color: Black, silver, red, blue, purple, green, gold, champagne



## 白板架 Whiteboard Stand



白板架  
货号: QH-999  
尺寸: 适用于80×120到120×200cm;  
100×150到120×240cm之间的各类白板尺寸。  
包装: 单个小包装, 6个一件大包装。  
重量: 毛重25kg, 净重。  
配件: 配备整套安装工具。  
材质: 壁厚标准0.8mm, 铁质椭圆管。

White board stand  
Item no: QH-999  
Size: 80×120 ~ 120×200cm;  
Various whiteboard sizes from 100×150 to 120×240cm.  
Packing: single small packing, 6 pieces to one large packing.  
Weight: gross weight 25kg, net weight.  
Accessories: Equipped with a complete set of installation tools.  
Material: Wall thickness standard 0.8mm, iron elliptic tube.



白板架  
货号: QH-S120  
尺寸: 适用于60×90到90×120cm;  
80×120到120×200cm;  
100×150到120×240cm之间的各类白板尺寸。  
包装: 单个小包装, 6个一件大包装。  
重量: 毛重18kg, 净重。  
配件: 配备整套安装工具。  
材质: 壁厚标准0.45, 铁质椭圆管。

Whiteboard Stand  
Item no: QH-S120  
Size: 60×90 to 90×120cm;  
80×120 to 120×200cm; Various whiteboard sizes from  
100×150 to 120×240cm.  
Packing: single small packing, 6 pieces to one large packing.  
Weight: gross weight 18kg, net weight.  
Accessories: Equipped with a complete set of installation tools.  
Material: Wall thickness standard 0.45, iron elliptic tube.



白板架  
货号: QH-555  
尺寸: 适用于60×90到90×120cm;  
80×120到120×200cm;  
100×150到120×240cm之间的各类白板尺寸。  
包装: 单个小包装, 6个一件大包装。  
重量: 毛重24kg, 净重。  
配件: 配备整套安装工具。  
材质: 壁厚标准0.8mm, 铁质椭圆管。

White board stand  
Item no: QH-555  
Size: 60×90 to 90×120cm; 80×120 to 120×200cm;  
Various whiteboard sizes from 100×150 to 120×240cm.  
Packing: single small packing, 6 pieces to one large packing.  
Weight: gross weight 24kg, net weight.  
Accessories: Equipped with a complete set of installation tools.  
Material: wall thickness standard 0.8mm, iron elliptic tube.



白板架  
货号: QH-S155  
尺寸: 适用于80×120到120×200cm;  
100×150到120×240cm之间的各类白板尺寸。  
包装: 单个小包装, 2个一件大包装。  
重量: 毛重20kg。  
配件: 配备整套安装工具。  
材质: 壁厚标准1.5mm, 铁质椭圆管。

White board stand  
Item no: QH-S155  
Size: 80×120 to 120×200cm Various whiteboard sizes from  
100×150 to 120×240cm.  
Packing: single small packing, 2 pieces per large packing.  
Weight: gross weight 20kg, net weight.  
Accessories: Equipped with a complete set of installation tools.  
Material: Wall thickness standard 1.5mm, iron elliptic tube.



白板架  
货号: QH-888  
尺寸: 适用于80×120到120×200cm;  
100×150到120×240cm之间的各类白板尺寸。  
包装: 单个小包装, 2个一件大包装。  
重量: 毛重20kg, 净重。  
配件: 配备整套安装工具。  
材质: 壁厚标准1.5mm, 铁质椭圆管。

White board stand  
Item no: QH-888  
Size: 80×120 to 120×200cm Various whiteboard sizes from  
100×150 to 120×240cm.  
Packing: single small packing, 2 pieces per large packing.  
Weight: gross weight 20kg, net weight.  
Accessories: Equipped with a complete set of installation tools.  
Material: Wall thickness standard 1.5mm, iron elliptic tube.

## 挂纸 Paper



白板挂纸A1系列  
尺寸: 58\*82cm (可定制)  
克重: 80克, 70克  
页数: 20张, 25张, 40张, 50张  
纸张颜色: 黄色, 白色  
包装: 裸包, 带OPP, 抵册  
可根据客人定制LOGO, 封面, 尺寸, 页数等

BBZ#  
Size: 58\*82cm (customizable)  
Grams: 80 grams, 70 grams  
Number of pages: 20, 25, 40, 50.  
Paper color: yellow, white  
Packing: bare bag with OPP, paper tube  
Can be customized according to the guest LOGO,  
cover, size, page number, etc





## 水溶性粉笔 Water soluble chalk



品名: 12只装水溶性粉笔  
 货号: SR12C  
 规格: 粉笔尺寸长8cm 直径1cm  
 类型: 无尘水溶性粉笔  
 颜色: 红, 蓝, 黄, 绿, 白, 橙, 青, 浅蓝, 紫, 褐, 肉粉, 粉  
 包装: 彩纸盒  
 重量: 110g  
 主要成分: 水溶性表: 代可可脂, 蜂蜡, 色素, 去离子水

Product name: 12 Pieces of water-soluble Chalk  
 Item no: SR12C  
 Size: 8cm in length and 1cm in diameter  
 Type: dust-free water-soluble Chalk  
 Color: red, blue, yellow, green, white, orange, green, light blue, violet, brown, meat powder, powder  
 Packing: Patterned color box  
 Weight: 110g  
 Ingredients: water soluble representative: Cocoa Butter, Beeswax, pigment, deionized water



品名: 20只装水溶性粉笔  
 货号: SR20C  
 规格: 粉笔尺寸长8cm 直径1cm  
 类型: 无尘水溶性粉笔  
 颜色: 红, 蓝, 黄, 绿, 白, 橙  
 包装: 彩纸盒  
 重量: 165g  
 主要成分: 水溶性表: 代可可脂, 蜂蜡, 色素, 去离子水

Product name: 20 Pieces of water-soluble Chalk  
 Item no: SR20C  
 Size: 8cm in length and 1cm in diameter  
 Type: dust-free water-soluble Chalk  
 Color: red, blue, yellow, green, white, orange  
 Packing: Patterned color box  
 Weight: 165g  
 Ingredients: water soluble representative: Cocoa Butter, Beeswax, pigment, deionized water



大粉笔  
 货号: QH-C001  
 产品规格: 10cm\*2.45cm\*2.24cm  
 盒子规格: 10cm\*10cm\*10.5cm  
 颜色: 绿/蓝/紫/  
 套箱数: 40盒  
 单盒净重: 538g  
 材质: 硫酸钙  
 Big Chalk  
 Item no: QH-C001  
 Size: 10cm\*2.45cm\*2.24cm  
 Box size: 10cm\*10cm\*10.5cm  
 Color: green/blue/purple/red/yellow/orange  
 QTY: 40PCS  
 Single box net weight: 540g  
 MATERIAL: Calcium sulfate



品名: 100只粉笔  
 货号: QH-C100  
 规格: 彩色/白色  
 尺寸: 7.4cm/8cm  
 箱规: 60盒装  
 重量: 345g  
 主要成分: 硫酸钙  
 Name: 100 pieces of chalk  
 Item No.: QH-C100  
 Specification: color/white  
 Size: 7.4cm/8cm  
 Box gauge: 60 boxes  
 Weight: 345g  
 Main ingredients: calcium sulfate



品名: 4只装水溶性粉笔  
 货号: SR4C  
 规格: 粉笔尺寸长8cm 直径1cm  
 类型: 无尘水溶性粉笔  
 颜色: 蓝, 黄, 绿, 橙  
 包装: 白纸盒  
 重量: 35g  
 主要成分: 水溶性表: 代可可脂, 蜂蜡, 色素, 去离子水



Product name: 4 Pieces of water-soluble Chalk  
 Item no: SR4C  
 Size: 8cm in length and 1cm in diameter  
 Type: dust-free water-soluble Chalk  
 Color: blue, yellow, green, orange  
 Packing: White Paper Box  
 Weight: 35g  
 Ingredients: water soluble representative: Cocoa Butter, Beeswax, pigment, deionized water



品名: 6只装水溶性粉笔  
 货号: SR6C  
 规格: 粉笔尺寸长8cm 直径1cm  
 类型: 无尘水溶性粉笔  
 颜色: 红, 蓝, 黄, 绿, 白, 橙  
 包装: 白纸盒  
 重量: 55g  
 主要成分: 水溶性表: 代可可脂, 蜂蜡, 色素, 去离子水



Product name: 6 Pieces of water-soluble Chalk  
 Item no: SR6C  
 Size: 8cm in length and 1cm in diameter  
 Type: dust-free water-soluble Chalk  
 Color: red, blue, yellow, green, white, orange  
 Packing: White Paper Box  
 Weight: 55g  
 Ingredients: water soluble representative: Cocoa Butter, Beeswax, pigment, deionized water

## 白板笔 Whiteboard pen

品名: 白板笔  
 货号: WBP#  
 欢迎定制  
 颜色: 红, 蓝, 黄, 绿, 青, 紫, 黑, 白粉

Name: whiteboard pen  
 Item no: wbp#  
 Welcome to customizations  
 Color: red, blue, yellow, green, cyan, purple, black, white powder



WBP-001



WBP-002



WBP-003



WBP-004



WBP-005



WBP-006



WBP-007



WBP-008



WBP-009



WBP-010



WBP-011



WBP-012



WBP-029



WBP-030



WBP-031



WBP-032



WBP-013



WBP-014



WBP-015



WBP-016



WBP-033



WBP-034



WBP-035



WBP-036



WBP-017



WBP-018



WBP-019



WBP-020



WBP-037



WBP-038



WBP-039



WBP-040



WBP-021



WBP-022



WBP-023



WBP-024



WBP-041



WBP-042



WBP-043



WBP-044



WBP-025



WBP-026



WBP-027



WBP-028



WBP-045



WBP-046



WBP-047



WBP-048



EVA板擦 EVA Eraser



EVA-001

EVA板擦系列  
 货号：EVA#  
 材质：EVA，毛毡，磁贴  
 适用：带有磁性，适用于白板，黑板上。  
 颜色：红黄蓝绿  
 包装：彩盒包装，OPP 包装

Eva#  
 Item no: EVA#  
 Material :EVA, felt, tile  
 Suitable: magnetic, suitable for whiteboard, blackboard.  
 Color: red, yellow, blue and green  
 Packaging: color box packaging, OPP packaging  
 ( Customer LOGO can be customized )



EVA-002



EVA-003



EVA-004



EVA-005



EVA-006



EVA-007



EVA-008



EVA-009



EVA-010



EVA-011



EVA-012



EVA-013



EVA-014



EVA-015



EVA-016



CYEVA-001

EVA彩印板擦系列  
 货号: CYEVA#  
 材质: EVA, 毛毡, 磁贴  
 颜色: 白  
 适用: 带有磁性, 适用于白板, 黑板上。  
 规格: 彩印猴子, 彩印铅笔, 彩印猫头鹰, 彩印椭圆。  
 包装: 彩盒包装, OPP 包装。

CEVA#  
 Item no: CYEVA#  
 Material :EVA, felt, tile  
 Suitable: magnetic, suitable for whiteboard, blackboard.  
 Specification: monkey, pencil, owl, oval.  
 Packaging: color box packaging, OPP packaging.



LTEVA-001

立体印刷板擦系列  
 货号: LTEVA#  
 材质: 不干胶, 毛毡, 磁贴。  
 适用: 带有磁性, 适用于白板, 黑板上。  
 规格: 根据客户定制。  
 包装: 彩盒包装。

LER#  
 Item no: LTEVA#  
 Material: adhesive, felt, tiling  
 Suitable: magnetic, suitable for whiteboard, blackboard.  
 Specifications: Customized according to customer.  
 Packing: Color box packing.



CYEVA-002



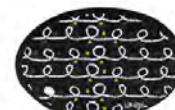
CYEVA-003



CYEVA-004



LTEVA-002



LTEVA-003



LTEVA-004



CYEVA-005



CYEVA-006



CYEVA-007



LTEVA-005



LTEVA-006



LTEVA-007



CYEVA-008



CYEVA-009



CYEVA-010



LTEVA-008



LTEVA-009



LTEVA-010



LTEVA-011



木质板擦系列

货号: 9905 尺寸: 150x41x38.5mm 净重: 88g 装箱数: 240个/件	货号: 9904 尺寸: 130.5x41.7x34.6mm 净重: 87.4g 装箱数: 240个/件	货号: 9903 尺寸: 100.7x44x35.7 mm 净重: 58g 装箱数: 240个/件	货号: 9901 尺寸: 50x35x32mm 净重: 20g 装箱数: 480个/件
Item no:9905 Size:150x41x38.5mm N.W.: 88g QTY: 240PCS	Item no:9904 Size:130.5x41.7x34.6mm N.W.: 87.4g QTY: 240PCS	Item no:9903 Size:100.7x44x35.7 mm N.W.: 58g QTY: 240PCS	Item no:9901 Size:50x35x32mm N.W.: 20g QTY: 480PCS



004



T-68



150



白板清洁剂系列

成分: 表面活性剂 异丙醇 纯水 香精  
规格: 250ml,100ml  
瓶身: 白色不透明, 可根据客人定制LOGO

Whiteboard cleaner#  
Composition: surfactant isopropanol pure water essence  
Specification: 250 ml, 100 ml  
Bottle body: white opaque, can be customized according to the customer LOGO



167-A



167-B



167-C



167-D



笔槽板擦

塑料板擦系列

材质: 塑料, 磁贴, 海绵, 绒布  
规格: 555板擦, 165笔槽板擦, 168板擦, 167板擦, S-168板擦,  
S-167板擦, 222板擦, 鼠标板擦  
包装: 中包OPP

PE#  
Material: plastic, tile, sponge, flannelette  
Item no:555/165/168/167/S-168/S-167/222/The mouse  
Packaging: Medium OPP



S-167



168



N168



164板擦



1168板擦



Y-168



S-168B



169



178



186



268



288



365



555

### 冰箱贴 田字格 Fridge Magnet



品名：无印刷A4冰箱贴  
货号：WYBXT#  
规格：A4  
材质：双面橡胶磁  
搭配成膜白板笔使用，可配强磁磁钉  
颜色：红，黄，蓝，绿，黑，白  
厚度：0.5mm,0.8mm

Name : No print A4 refrigerator sticker  
Item no:WYBXT#  
Material: double-sided rubber magnet  
It can be used with film-forming whiteboard pen and strong magnetic nail  
Color: red, yellow, blue, green, black, white  
Thickness: 0.5 mm, 0.8 mm



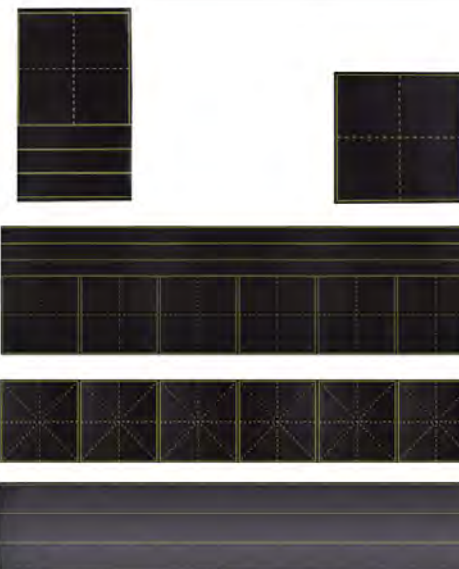
品名：白板贴  
货号：BBT#  
规格：45\*200cm, 60\*200cm, 90\*200cm, 120\*200cm  
颜色：白色，绿色，黑色  
厚度：1mm  
包装：吸塑外加彩盒  
带背胶，可上墙

Name:Soft White Board  
Item no:BBT#  
Size:45\*200cm,60\*200cm,90\*200cm,120\*200cm  
Color:white,greenn,black  
Thickness:1mm  
Packing: Plastic Blister plus color box  
It's got glue on it. It goes on the wall



品名：铁性白板  
货号：DCRB#  
规格：40\*60cm, ,60\*100cm,120\*100cm,  
厚度：0.6mm  
单个吸塑  
不带背胶，自由裁剪

Name :Iron whiteboard  
Item no:DCRB#  
Size:40\*60cm, ,60\*100cm,120\*100cm,  
Thickness ; 0.6mm  
Single Blister  
No Back Glue, free cutting



品名：磁贴  
货号：CT#  
规格：  
六联田字格，  
六联拼音田字格，  
拼音格，  
六联米字格，  
英语格，  
单个田字格，  
单个拼音田字格，  
四联拼音田字格，  
四联田字格  
厚度：0.6mm  
材质：软胶磁

Name :Magnetic sticker  
Item no:CT#  
Size :  
Liu Lian Tian Zi Ge,  
Liu Lian Pinyin Tian Zi Ge,  
Pinyin Ge,  
Liu Lian Mi Zi Ge,  
English Ge,  
Single Tian Zi Ge, s  
ingle Pinyin Tian Zi Ge,  
four Lian Pinyin Tian Zi Ge,  
four Lian Tian Zi Ge  
Thickness: 0.6 mm  
Material: Soft Glue magnetic



### 磁钉 Magnetic nail



品名：无印刷散装磁钉  
 货号：WYCD#  
 规格：2cm,3cm,4cm  
 颜色：红,黄,蓝,绿,玫红,橙  
 材质：新料/回料  
 欢迎定制印刷

Name: non-printing bulk magnetic nails  
 Item no: WYCD#  
 Size:2cm ,3cm,4cm  
 Color:red ,yellow,bule,greenn,roes,orange  
 Material: new / recycled material  
 Welcome to bespoke printing

品名：吸卡式磁钉  
 货号:XKCD#  
 规格：2cm,3cm,4cm  
 颜色：红,黄,蓝,绿,玫红,橙  
 材质：新料/回料  
 欢迎印刷定制

Name:Suction Card type magnetic nail  
 Item no:XKCD#  
 Size:2cm ,3cm,4cm  
 Color:red ,yellow,bule,greenn,roes,orange  
 Material: new / recycled material  
 Welcome to bespoke printing



XKCD-001 XKCD-002 XKCD-003 XKCD-004 XKCD-005



XKCD-006 XKCD-007 XKCD-008 XKCD-009 XKCD-010 XKCD-011 XKCD-012 XKCD-013 XKCD-014 XKCD-015



XKCD-016 XKCD-017 XKCD-018 XKCD-019 XKCD-020 XKCD-021 XKCD-022 XKCD-023 XKCD-024



### 字母磁贴 Alphabet tiles

品名：字母磁贴  
 货号：ZMCT  
 材质：塑料  
 规格：小号大写字母磁贴、小号小写字母磁贴、  
 大号大写字母磁贴、大号小写字母磁贴、  
 小号数字磁贴、大号数字磁贴等

TITLE: Letter Tiles  
 Item no:ZMCT  
 MATERIAL: Plastic  
 Specification: Small Majuscule, small lowercase,  
 large Majuscule, large lowercase,  
 small digital, large digital, etc.



ZMCT-001



ZMCT-002



ZMCT-003



ZMCT-004



ZMCT-005





ZMCT-006



ZMCT-007



ZMCT-008



ZMCT-018



ZMCT-019



ZMCT-020



ZMCT-009



ZMCT-010



ZMCT-011



ZMCT-021



ZMCT-022



ZMCT-023



ZMCT-012



ZMCT-013



ZMCT-014



ZMCT-024



ZMCT-025



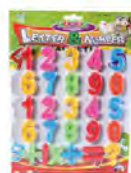
ZMCT-026



ZMCT-015



ZMCT-016



ZMCT-017



ZMCT-027



ZMCT-028



ZMCT-029





ZMCT-030



ZMCT-031



ZMCT-032



ZMCT-042



ZMCT-043



ZMCT-044



ZMCT-033



ZMCT-034



ZMCT-035



ZMCT-045



ZMCT-046



ZMCT-036



ZMCT-037



ZMCT-038



ZMCT-047



ZMCT-048



ZMCT-039



ZMCT-040



ZMCT-041



ZMCT-049



ZMCT-050

