

SANITATION PRODUCTS



用人品打造精品

用精品奉献社会

States-of-the-art products are made with morality and personality, and dedicative to the society

目录

CONTENTS

企业简介	
Enterprise Profile	
企业认证及荣誉	
Certificate	
领导关怀	
Leader Solicitude	
研发能力	
R&D Capabilities	
工艺装备	
Process Equipment	
9大系列环卫产品.....	01-02
9 Series Sanitation Products	
压缩式垃圾车系列.....	03-12
Compression Garbage Truck Series	
垃圾压缩转运设备及车辆.....	13-30
Compression Refuse Hauler and Equipment	
自装卸式垃圾车（餐厨垃圾车）系列.....	31-38
Dump Refuse Collector (Restaurant Refuse Collector) Series	
扫路车系列.....	39
Sweeper truck	
垃圾转运车系列.....	41-43
Refuse Hauler series	
洒水车系列.....	44
Sprinkler series	
高压清洗车系列.....	45
High pressure cleaning vehicle series	
吸污车系列.....	46
Vacuum cleaning truck series	
其它环卫车辆.....	47-48
Others	
售后服务.....	49-52
After-Sales Service	

Enterprise Profile

Co., Ltd (originally named as) located in the beautiful coastal city - is one of the wholly-owned subsidiaries of China National Co., Ltd. (hereafter referred as) the famous enterprise of China special truck industry, as well as the standards drafting unit of national special trucks industry. The Company is granted as " " and " ". has passed ISO9001, ISO14001, GJB729001A and GJB9001A military certification, GB/T29001 and TS16949 firstly in the industry. The company is granted "Quality Excellence Award of " and rated as Class A Enterprise of ratepaying credit grade and Class AAA Enterprise credit rating and awarded the title of "Contract Abiding & Trustworthy Enterprise" for years.

is founded in 1954, is one of the earliest enterprises associated with special trucks. The company owns 240 million RMB of registered capital and total assets reaches 2 billion, which occupies 867,100 square meters area with more than 1500 producing equipments. There are over 1,100 employees including 300 technical staffs working in the company. has the capacity of yearly output reaching 20,000 units of all kinds of special trucks and 60,000 units hydraulic system and 5,000 units engineering machinery. The company has two business parts: Special Truck Division and Engineering Machinery Division. The two divisions are in charge of the development, manufacturing and after sale service of all kinds of special trucks & spare parts, and engineering machinery separately.

After more than half century development, accumulated abundant technology and advantages of special truck market. Occupying advanced processing equipments and technology, has become the leader of special truck areas, and established powerful special truck, military equipment and hydraulic parts researching ability by cooperating with various technical centers and universities as well as foreign companies through technical introduction, joint venture and technology-trade cooperation. Its products widely used in engineering construction, sanitation area, air port, logistics, and military industry, etc. The company has developed 5 series including 300 kinds of heavy duty trucks, special trucks, excavators and military vehicles, as well as over 50 kinds of spare parts for hydraulic tipping system, which can meet the rising market demands both at home and abroad. All products have leading level technology in the industry and the export volume is also on the top of the industry. In recent years, as the leader of the industry, has presided over the drafting of ten industrial standards for special trucks, owned national patents amount to 210, and over 30 products won national, the provincial and municipal scientific & technological progress awards. The Technical Center is awarded Enterprise Technical Center.

Uphold the enterprise spirit of "Faithful, New, Real, Strict, " , Management ideas of "Customer oriented, users first, dealers second, : third" , quality policy of "customer-oriented, high quality-based, to build famous brand and top-notch companies" , and the working policy of "centralized by benefits, sales as headquarter, quality as enterprise life, involved in the management, lowering cost and assurance of construction period" , is speeding up the development by adjusting structure, and strives to realize the development goals of annual production and sale volume reaching 40,000 units of all kinds of special trucks, 10,000 units of engineering machinery, with sales revenue of 10 billion RMB, main products quality and market share reaching to industry leading level. The company is devoted herself to build the top brand of China heavy-duty special trucks and first-class enterprise of engineering machinery.



研发能力

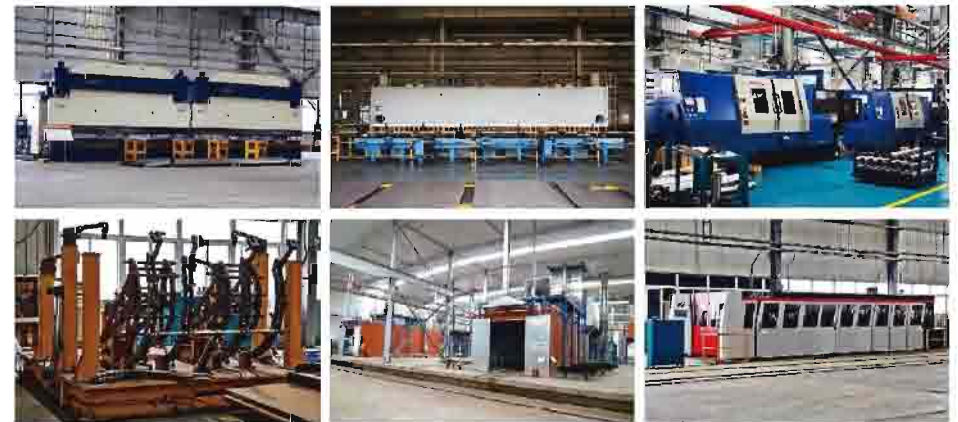
Research and development ability

- The company enter into special vehicles manufacture field from 1960 s, have a high reputation in special vehicles filed. The technology center was identified as Shandong province enterprise technology center, its national technology center -- the special vehicles division of technology center, its also heavy-duty vehicles institute, the technology center undertake industry management function, owns many kinds of technicians more than 300 peoples, have research, inspection, examine ability of many kinds of special vehicles.
- The company owns SGI computer station which is import from American, products developments use CAD software, popularized the computer 2 d and 3 d entity design, finite element analysis, carry out dynamic simulation, space of wiring, Impact and heat balance analysis etc. modern design, make the company' s research and development level always been the leader of industry.
- The technology center won more than 210 national patents, successively drafted 10 special vehicles national industry standards, 30 products access national, province scientific progress awards.



工艺装备

Process Equipment





侧装压缩式垃圾车
Side-loading compression garbage truck



后装压缩式垃圾车
Rear-loading compression garbage truck



厨余车
Restaurant refuse collector



吸粪车、吸污车
Fecal suction truck / Vacuum sewer cleaner truck

9大系列环卫类产品

环卫产品经二十多年的发展，已拥有9大系列，90余种规格产品。产品借鉴欧美先进技术，依托企业六十年发展所积淀技术实力，自行研制并拥有自主知识产权。压缩式垃圾车为我公司主导产品之一，在国内同类产品中拥有显著优势，销量居行业前列，并出口到多个国家。压缩式垃圾车荣获“山东名牌”称号，是国内环卫产品的著名品牌。

9 series sanitation vehicle

sanitation vehicles owned 9 series, 90 kinds of products after twenty years' development. The product learn from European and American advanced technology, relying on sixty years' experience in technology innovation, research and improving, and own intellectual-property rights. Compression garbage truck is one of our company main products, have a significant advantage with similar domestic products in China, sales volume in the front of industry, and the products exported to many country. The compression garbage truck won the title of "shandong famous brand", it is famous brand in sanitation vehicles.



车厢可卸式垃圾车
Container removable garbage truck



洒水车、运水车
Sprinkler truck / Water tank truck



移动式压缩站
Mobile compression station



摆臂式垃圾车
Swept-body refuse collector



道路清扫车
Road sweeping truck



垃圾转运车
Refuse transportation truck

压缩式垃圾车系列

Compression garbage truck

brand compression garbage truck choose famous chassis in China, such as and so on, emission standard is EURO IV,EURO V. Compression garbage truck body have frame structured and Truck body bucket have square frame structured and arcing frame structured, shapes beautiful, strong rigidity, long working life. According to the volume is divided into 6m³, 8m³, 10m³, 12m³, 14m³, 16m³, 18m³, 20m³, 22m³, 25m³.



压缩式垃圾车代表车型 Compression garbage truck recommended models

项目 (Item)	参数 (Parameter)	
产品型号 (TYPE)	QDZ5161ZYSZHT5G	QDZ5161ZYSZHT5GE1
底盘型号 CHASIS MODEL	中国重汽T5G系列 ZZ1167H501GD1	中国重汽T5G系列 ZZ1167K421GE1
最大总质量 (kg) TOTAL MASS	16000	16000
外形尺寸 (mm) (长×宽×高) OVERALL (L×W×H) DIMENSIONS	9025X2496X3312	8640 X2500 X3200
最小转弯直径 (m) MIN TURNING DIAMETER	18	18
最高车速 (km/h) MAXSPEED	101	101
百公里油耗 (L/100km) FUEL CONSUMPTION	24	24
发动机 ENGINE	型号 TYPE	中国重汽MC05.21-40
	额定功率 (kw) OUTPUT	151
车厢容积 (m ³) VOLUME OF BODY	16	14
填装容积 (m ³) VOLUME OF FILLER	2.2	2.2
填装口沿离地高度 (mm) HIGH OF FIELLER'S ENTER	1150	1150
填装作业一次循环时间 (s) TIME OF ONE LOADING CYCLE	≤25	≤25
推卸垃圾一次循环时间 (s) TIME OF ONE DISLOADING	≤45	≤45
最大破碎压力 (kgf) MAX BRAKE CRASE PRESSURE	≥25000	≥25000
液压系统工作压力 (Mpa) PRESSURE OF FLUID SYSTEM	20	20

压缩式垃圾车技术特点

Compression garbage truck technical characteristics

结构 Structure



- After optimal design, under the condition of meet well shapes, reasonable weight, longer working life requirements, Qingzhu brand carriage precompressor have square frame structured and arcing frame structured.

材料 Material



- Compression garbage truck material is import for truck' s performance and working life. We adopt T520 high-strength seamless steel. Hardness, wear resistance far exceeds 16Mn.

填装器导轨 Precompressor rail



- Rail is one of the main parts of precompressor, precision machining rail and high-strength nylon slide constitute the most advanced skateboarding, its advantage is: rail groove width exactly, rail total length straightness well, working surface finish well; rail have good rigidity, high strength, slide contacting surface can reach more, make slide running stable.

污水密封及储存 Sewage sealing and storage



- The joint of precompressor and carriage locked automatically by hydraulic, there are three joints from carriage rear-frame top point to rear-frame bottom, brand compression garbage truck with special sealing strip, and after back bucket close to body bucket, locked automatically by hydraulic, compress the sealing, sealing compression is 6-8 mm, ensure all sewage closed in the car, no leakage due to transit, driving, parking. This function is reliable and effective, the technology have been to leading level in China, and got national patent already.
- There is one closed rear sewage tank under precompressor, and another big volume sewage tank is under body bucket, can storage sewage and avoid leakage. In addition, loading entrance rear plate front and body bucket bottom become one closed container, can collect sewage, increases the waterproof storage directly.

先进可靠的液压系统 Advanced and reliable hydraulic system



- compressed hydraulic system use European popular type-double pump and double oil-way, consists with amphibious multi-way valve which are pneumatic-electronic control and manual operation control, and special cartridge valve blocks, with two-way compression function .
- The valve is imported from Europe, alloy cast iron, the surface of spool treat with nitrogen, has a stable reversing, motor-driven and manual operation, it' s function is advanced .

方便高效的操控系统 Convenient and efficient control system



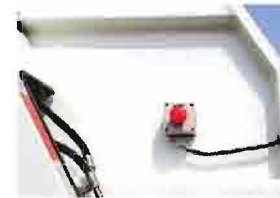
- Motor-driven and manual operation is convenient and efficient.
- When the body is working, the engine has synchronous acceleration, productivity and oil-saving effect are all obvious.

可选配多种机械翻转装置 Optional various mechanical turn-over device



- In order to adapt to the different needs of users, compressed garbage truck has various kinds of rubbish bin lifters, fill seal cover.
- Various kinds of rubbish bin lifters can be used with various standard rubbish bin, nonstandard rubbish bin, and utility cart, flip agencies can be made into dustpan hopper forms.

安全防护装置 safety device



- Filling machine pole can support the rising filling device in the air and prevent accidental fall.
- The loading device is configured in the lifting oil cylinder explosion-proof valve, in case of lifting cylinder tubing bursting into falling accident.
- There are scram buttons on both sides of vehicle loading, they will stop loading action when accident happen, to reduce the extent of the injury accident.
- There is overload protection valve in hydraulic system, if the scraper blade meet big resistance, the overload protection valve will open to avoid obstacles, in order to prevent the occurrence of mechanical damage.



型号 (TYPE)	5100
车厢容积 (VOLUME OF BODY)	8m ³
底盘型号(CHASIS MODEL)	豪沃轻卡 ZZ1107G421CE199
排放标准(EMISSION STANDARD)	国V
发动机型号(ENGINE TYPE)	MC05.14-50 MC05.16-50
发动机功率(ENGINE OUTPUT)	103kw 118kw



型号 (TYPE)	5080
车厢容积 (VOLUME OF BODY)	6m ³
底盘型号(CHASIS MODEL)	豪沃轻卡 ZZ1087D3614D180
排放标准(EMISSION STANDARD)	国IV
发动机型号(ENGINE TYPE)	CY4102-CE4D YN38CRD2
发动机功率(ENGINE OUTPUT)	83kw 85kw



型号 (TYPE)	5120
车厢容积 (VOLUME OF BODY)	10m ³ 11m ³
底盘型号(CHASIS MODEL)	T5G ZZ1127H421GD1
排放标准(EMISSION STANDARD)	国IV
发动机型号(ENGINE TYPE)	MC05.18-40 MC05.21-40
发动机功率(ENGINE OUTPUT)	132kw 151kw



型号 (TYPE)	5160 W
车厢容积 (VOLUME OF BODY)	16m ³
底盘型号(CHASIS MODEL)	T5G ZZ1167K501GE1
排放标准(EMISSION STANDARD)	国V
发动机型号(ENGINE TYPE)	MC05.21-50 MC07.21-50
发动机功率(ENGINE OUTPUT)	151kw 151kw

型号 (TYPE)	5161X
车厢容积 (VOLUME OF BODY)	12m ³ 14m ³
底盘型号(CHASIS MODEL)	T5G ZZ1167K421GE1
排放标准(EMISSION STANDARD)	国V
发动机型号(ENGINE TYPE)	MC05.21-50 MC07.21-50
发动机功率(ENGINE OUTPUT)	151kw 151kw

型号 (TYPE)	5161Y
车厢容积 (VOLUME OF BODY)	16m ³
底盘型号(CHASIS MODEL)	T5G ZZ1167H501GD1
排放标准(EMISSION STANDARD)	国IV
发动机型号(ENGINE TYPE)	MC05.18-40 MC05.21-40
发动机功率(ENGINE OUTPUT)	132kw 151kw



型号 (TYPE)	5160Y
车厢容积 (VOLUME OF BODY)	12m ³ 14m ³
底盘型号(CHASIS MODEL)	T5G ZZ1167H421GD1
排放标准(EMISSION STANDARD)	国IV
发动机型号(ENGINE TYPE)	MC05.18-40 MC05.21-40
发动机功率(ENGINE OUTPUT)	132kw 151kw



型号 (TYPE)	5160
车厢容积 (VOLUME OF BODY)	12m ³ 14m ³ 16m ³
底盘型号(CHASIS MODEL)	M5G ZZ1161H501GE1
排放标准(EMISSION STANDARD)	国V
发动机型号(ENGINE TYPE)	MC05.18-50 MC05.21-50
发动机功率(ENGINE OUTPUT)	132kw 151kw



型号 (TYPE)	5254
车厢容积 (VOLUME OF BODY)	25m ³
底盘型号(CHASIS MODEL)	豪沃ZZ1257M4347D1
排放标准(EMISSION STANDARD)	国IV
发动机型号(ENGINE TYPE)	D10.30-40 D10.28-40
发动机功率(ENGINE OUTPUT)	221kw 206kw



型号 (TYPE)	5161
车厢容积 (VOLUME OF BODY)	12m ³
底盘型号(CHASIS MODEL)	重汽金王子ZZ3161M4011D1
排放标准(EMISSION STANDARD)	国IV
发动机型号(ENGINE TYPE)	D10.30-40 D10.28-40
发动机功率(ENGINE OUTPUT)	221kw 206kw



型号 (TYPE)	5080-1
车厢容积 (VOLUME OF BODY)	6m ³
底盘型号(CHASIS MODEL)	福田BJ5089XXY-FA
排放标准(EMISSION STANDARD)	国IV
发动机型号(ENGINE TYPE)	ISF3.8s5141 ISF3.8s5154
发动机功率(ENGINE OUTPUT)	105kw 115kw



型号 (TYPE)	5163
车厢容积 (VOLUME OF BODY)	16m ³
底盘型号(CHASIS MODEL)	豪沃ZZ1167M4617D1
排放标准(EMISSION STANDARD)	国IV
发动机型号(ENGINE TYPE)	D10.30-40 D10.31-40
发动机功率(ENGINE OUTPUT)	221kw 206kw



型号 (TYPE)	5080-2
车厢容积 (VOLUME OF BODY)	6m ³
底盘型号(CHASIS MODEL)	东风多利卡EQ1080SJ2BDA
排放标准(EMISSION STANDARD)	国IV
发动机型号(ENGINE TYPE)	ISDe140 40 CY4102-CE4C
发动机功率(ENGINE OUTPUT)	103kw 91kw



型号 (TYPE)	5250-1
车厢容积 (VOLUME OF BODY)	20m ³ 22m ³
底盘型号(CHASIS MODEL)	T5G ZZ1257N464GE1
排放标准(EMISSION STANDARD)	国V
发动机型号(ENGINE TYPE)	MC07.28-50 MC07.31-50
发动机功率(ENGINE OUTPUT)	206kw 228kw



型号 (TYPE)	5070
车厢容积 (VOLUME OF BODY)	6m ³
底盘型号(CHASIS MODEL)	东风凯普特DFA1070SJ41D6
排放标准(EMISSION STANDARD)	国IV
发动机型号(ENGINE TYPE)	ZD30D13-4N D28D11-4DA
发动机功率(ENGINE OUTPUT)	96kw 85kw

型号 (TYPE)	5250-2
车厢容积 (VOLUME OF BODY)	25m ³
底盘型号(CHASIS MODEL)	T5G ZZ1257M464GD1
排放标准(EMISSION STANDARD)	国IV
发动机型号(ENGINE TYPE)	MC07.24-40 MC07.28-40
发动机功率(ENGINE OUTPUT)	176kw 206kw



型号 (TYPE)	5120
车厢容积 (VOLUME OF BODY)	10m ³
底盘型号(CHASSIS MODEL)	东风天锦 DFL1160BX1V
排放标准(EMISSION STANDARD)	国V
发动机型号(ENGINE TYPE)	ISD180 50 ISD160 50
发动机功率(ENGINE OUTPUT)	132kw 118kw

型号 (TYPE)	5160
车厢容积 (VOLUME OF BODY)	12m ³ 14m ³
底盘型号(CHASSIS MODEL)	东风天锦 DFL1160BX1V
排放标准(EMISSION STANDARD)	国V
发动机型号(ENGINE TYPE)	ISD210 50 ISD180 50
发动机功率(ENGINE OUTPUT)	155kw 132kw



型号 (TYPE)	5254
车厢容积 (VOLUME OF BODY)	20/22m ³
底盘型号(CHASSIS MODEL)	东风天龙DFL1250A11
排放标准(EMISSION STANDARD)	国IV
发动机型号(ENGINE TYPE)	ISDe270 40 ISDe245 40
发动机功率(ENGINE OUTPUT)	198kw 180kw



型号 (TYPE)	5071
车厢容积 (VOLUME OF BODY)	6m ³
底盘型号(CHASSIS MODEL)	庆铃QL1070A1HAY
排放标准(EMISSION STANDARD)	国IV
发动机型号(ENGINE TYPE)	4KH1-TCG40
发动机功率(ENGINE OUTPUT)	88kw



型号 (TYPE)	5121
车厢容积 (VOLUME OF BODY)	8m ³ 10m ³
底盘型号(CHASSIS MODEL)	东风天锦 DFL1120B3
排放标准(EMISSION STANDARD)	国IV
发动机型号(ENGINE TYPE)	ISDe160 40 ISDe180 40
发动机功率(ENGINE OUTPUT)	118kw 132kw



型号 (TYPE)	5160
车厢容积 (VOLUME OF BODY)	14m ³
底盘型号(CHASSIS MODEL)	解放CA1167PK2BE4A80
排放标准(EMISSION STANDARD)	国IV
发动机型号(ENGINE TYPE)	BF4M2012-16E4 BF6M2012-18E4
发动机功率(ENGINE OUTPUT)	121kw 139kw



型号 (TYPE)	5165
车厢容积 (VOLUME OF BODY)	12m ³
底盘型号(CHASSIS MODEL)	东风天锦 DFL1160BxB
排放标准(EMISSION STANDARD)	国IV
发动机型号(ENGINE TYPE)	ISDe210 40 ISDe185 40
发动机功率(ENGINE OUTPUT)	155kw 136kw

型号 (TYPE)	5166
车厢容积 (VOLUME OF BODY)	14m ³
底盘型号(CHASSIS MODEL)	东风天锦 DFL1160BX4
排放标准(EMISSION STANDARD)	国IV
发动机型号(ENGINE TYPE)	ISDe210 40 ISDe185 40
发动机功率(ENGINE OUTPUT)	155kw 136kw

垃圾压缩转运设备及车辆

Equipments and vehicles for compressing and transferring garbage

Waste transport use brand container removable garbage trucks, the products can be matched with sealed container or mobile compression container, independently hook container, drop the container, dump garbage etc. for waste transfer. Chassis used brand, with excellent power, fuel economy and good operational stability. Euro IV emission standards. Up structure lifting tonnage divided into 1.3T, 14T, 17T, 20T, 25T, 30T series.



产品技术特点 technical characteristics

- It can be matched use with a sealed body or a mobil pressure body of jointly body. It can hook body, drop body, dump and so on by itself. It's special transfer the refuse.
- Selection of imported brands of complete sets of hook arm device, it is reliability, safety, service life, easy to operate, have reached the international advanced level.
- A set of hook arm assembly includes hook arm, chassis, fuel pumps, fuel tanks, piping, control valves, electrical components that are imported products.



型号 (TYPE)	5160-1
车厢容积 (VOLUME OF BODY)	14t
底盘型号(CHASSIS MODEL)	T5G ZZ1167K501GE1
排放标准(EMISSION STANDARD)	国V
发动机型号(ENGINE TYPE)	MC05.18-50 MC05.21-50
发动机功率(ENGINE OUTPUT)	132kw 151kw

型号 (TYPE)	5160-2
车厢容积 (VOLUME OF BODY)	14t
底盘型号(CHASSIS MODEL)	T5G ZZ1167K501GD1
排放标准(EMISSION STANDARD)	国IV
发动机型号(ENGINE TYPE)	MC05.18-40 MC05.21-40
发动机功率(ENGINE OUTPUT)	132kw 151kw

型号 (TYPE)	5160-3
车厢容积 (VOLUME OF BODY)	14t
底盘型号(CHASSIS MODEL)	M5G ZZ1161H501GE1
排放标准(EMISSION STANDARD)	国V
发动机型号(ENGINE TYPE)	MC05.18-50 MC05.21-50
发动机功率(ENGINE OUTPUT)	132kw 151kw

型号 (TYPE)	QDZ5250ZXXZHT5GE1
车厢容积 (VOLUME OF BODY)	18t 20t 22t
底盘型号(CHASSIS MODEL)	T5G ZZ1257N464GE1
排放标准(EMISSION STANDARD)	国V
发动机型号(ENGINE TYPE)	MC07.28-50 MC07.34-50
发动机功率(ENGINE OUTPUT)	206kw 248kw

型号 (TYPE)	QDZ5250ZXXZHT5G
车厢容积 (VOLUME OF BODY)	18t 20t 22t
底盘型号(CHASSIS MODEL)	T5G ZZ1257M464GD1
排放标准(EMISSION STANDARD)	国IV
发动机型号(ENGINE TYPE)	MC07.24-40 MC07.28-40
发动机功率(ENGINE OUTPUT)	176kw 206kw





型号 (TYPE)	5250
车厢容积 (VOLUME OF BODY)	18t 20t 22t
底盘型号(CHASIS MODEL)	M5G ZZ1251N464GE1
排放标准(EMISSION STANDARD)	国V
发动机型号(ENGING TYPE)	MC07.28-50 MC07.31-50
发动机功率(ENGING OUTPUT)	206kw 228kw



型号 (TYPE)	5254
最大举力力 (MAXIMUM LIFT FORCE)	18t 20t 22t
底盘型号(CHASIS MODEL)	豪沃 ZZ3257N4347E1
排放标准(EMISSION STANDARD)	国V
发动机型号(ENGING TYPE)	D10.31-50 D10.34-50
发动机功率(ENGING OUTPUT)	228kw 249kw



型号 (TYPE)	5252
最大举力力 (MAXIMUM LIFT FORCE)	18t 20t 22t
底盘型号(CHASIS MODEL)	豪沃 ZZ3257N4347D1
排放标准(EMISSION STANDARD)	国IV
发动机型号(ENGING TYPE)	D10.38-40 D12.34-40
发动机功率(ENGING OUTPUT)	276kw 249kw



型号 (TYPE)	5314
最大举力力 (MAXIMUM LIFT FORCE)	26t 30t
底盘型号(CHASIS MODEL)	豪沃 ZZ3317N3867E1
排放标准(EMISSION STANDARD)	国V
发动机型号(ENGING TYPE)	D10.31-50 D10.34-50
发动机功率(ENGING OUTPUT)	228kw 249kw



型号 (TYPE)	5312
最大举力力 (MAXIMUM LIFT FORCE)	26t 30t
底盘型号(CHASIS MODEL)	豪沃 ZZ3317N3867D1
排放标准(EMISSION STANDARD)	国IV
发动机型号(ENGING TYPE)	D10.38-40 D12.34-40
发动机功率(ENGING OUTPUT)	276kw 249kw

型号 (TYPE)	5310
车厢容积 (VOLUME OF BODY)	26t 30t
底盘型号(CHASIS MODEL)	T5G ZZ1317N436GE1
排放标准(EMISSION STANDARD)	国V
发动机型号(ENGING TYPE)	MC07.31-50 MC07.34-50
发动机功率(ENGING OUTPUT)	248kw 228kw

型号 (TYPE)	5162
最大举力力 (MAXIMUM LIFT FORCE)	14t
底盘型号(CHASIS MODEL)	东风天锦 DFL1160BX1V
排放标准(EMISSION STANDARD)	国V
发动机型号(ENGING TYPE)	ISD190 50 ISD180 50
发动机功率(ENGING OUTPUT)	144kw 132kw

型号 (TYPE)	5161
最大举力力 (MAXIMUM LIFT FORCE)	14t
底盘型号(CHASIS MODEL)	东风天锦 DFL1160BX4
排放标准(EMISSION STANDARD)	国IV
发动机型号(ENGING TYPE)	ISDe180 40 ISDe185 40
发动机功率(ENGING OUTPUT)	132kw 136kw

移动式垃圾压缩设备介绍

——料斗分体式垃圾处理设备



型号 (TYPE)	5250
最大拉举力 (MAXIMUM LIFT FORCE)	18t 20t 22t
底盘型号(CHASIS MODEL)	东风天龙 DFL1250A11
排放标准(EMISSION STANDARD)	国IV
发动机型号(ENGINE TYPE)	ISDe270 40 ISDe245 40
发动机功率(ENGINE OUTPUT)	198kw 180kw



型号 (TYPE)	5160
最大拉举力 (MAXIMUM LIFT FORCE)	14t
底盘型号(CHASIS MODEL)	解放 CA1167PK2BE4A80
排放标准(EMISSION STANDARD)	国IV
发动机型号(ENGINE TYPE)	BF4M2012-16E4 BF6M2012-18E4
发动机功率(ENGINE OUTPUT)	121kw 139kw



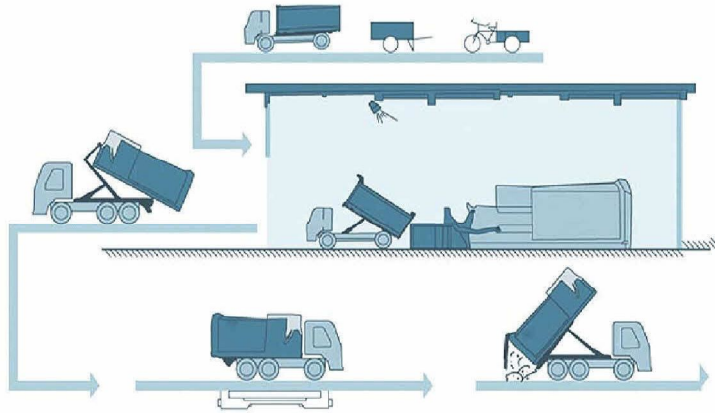
型号 (TYPE)	5020
最大拉举力 (MAXIMUM LIFT FORCE)	1t
底盘型号(CHASIS MODEL)	长安 SC1022DB4N4
排放标准(EMISSION STANDARD)	国IV
发动机型号(ENGINE TYPE)	JL466Q1
发动机功率(ENGINE OUTPUT)	50.7kw



型号 (TYPE)	5030
最大拉举力 (MAXIMUM LIFT FORCE)	1.5t
底盘型号(CHASIS MODEL)	福田 BJ1030V4JV2-X1
排放标准(EMISSION STANDARD)	国IV
发动机型号(ENGINE TYPE)	LJ465Q-2AE CF465Q-1AE1
发动机功率(ENGINE OUTPUT)	45kw 38.5kw



工作流程



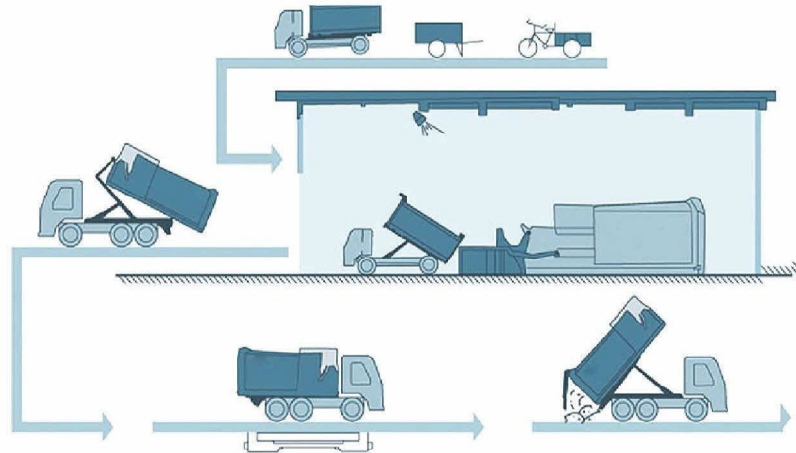
移动式垃圾压缩设备介绍

——料斗连体式垃圾处理设备



项目	单位	2008	2012	2017
垃圾日处理量	t/8h	60	80	120
压缩腔有效容积	m ³	2.2	2.2	3.2
料斗容积	m ³	2.0	2.0	2.0/3.0
最大压缩力	KN	300	360	360
最大系统压力	Mpa	26	26	26
上料机构循环时间	S	≤30	≤30	≤30
电压	V	380	380	380
电机功率	KW	5.5	7.5	7.5
运行噪音	dB	≤65	≤65	≤65
压实密度	t/m ³	≥0.75	≥0.75	≥0.75
压缩循环时间	S	≤35	≤35	≤38
垃圾箱容积	m ³	8	12	15-17

工作流程



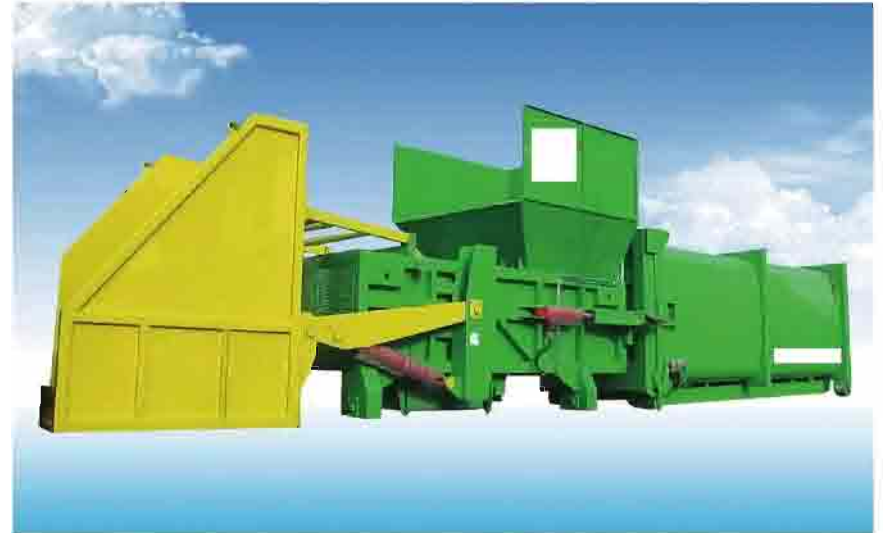
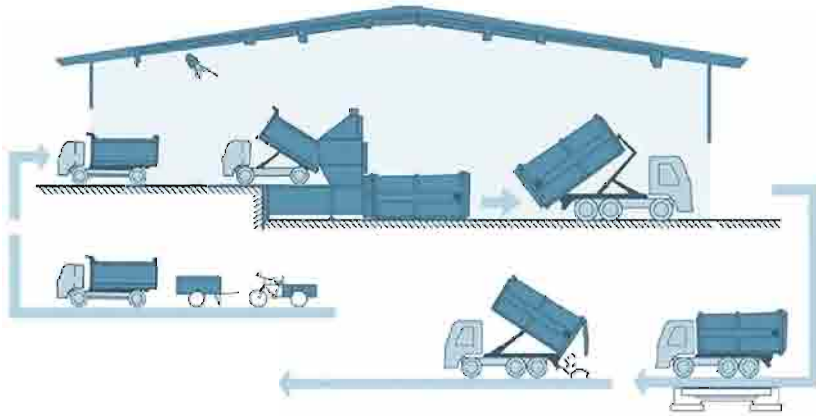
小型固定式垃圾压缩设备



项目	单位	3008	3012	3015-3017
日处理量	t/8h	60	90	130
压缩腔有效容积	m ³	2.3	3.2	3.2
料斗容积	m ³	2.0	3.0	3.8
最大压缩力	KN	300	380	380
最大系统压力	Mpa	26	28	28
上料机构循环时间	S	≤30	≤30	≤30
电压	V	380	380	380
电机功率	KW	5.5	7.5	7.5
运行噪音	dB	≤65	≤65	≤65
压实密度	t/m ³	≥0.75	≥0.75	≥0.75
压缩循环时间	S	≤35	≤35	≤38
垃圾箱容积	m ³	8	12	15-17

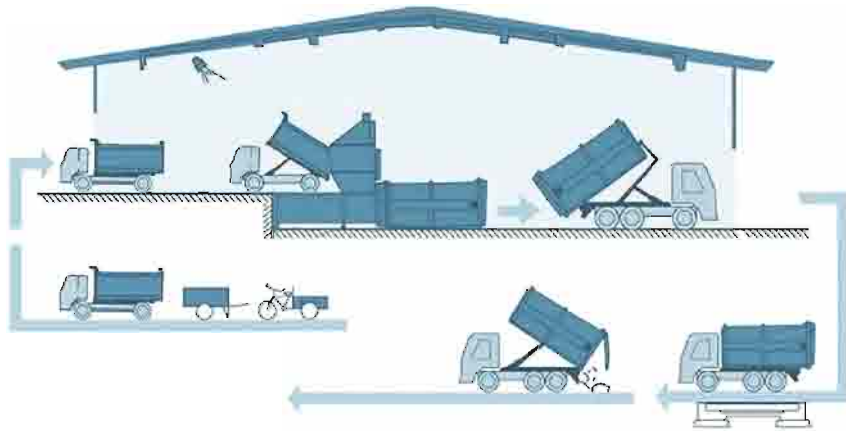
中型固定式垃圾压缩设备

工作流程



项目	单位	参数
垃圾处理能力	t/8h	100-150
最大压缩力	KN	360
最大系统压力	Mpa	26
压缩腔容积	m ³	3
功率	KW	7.5
电源	V	380
装载容积	m ³	10/12/15/17
上料方式	后平台上料、侧平台上料	

工作流程

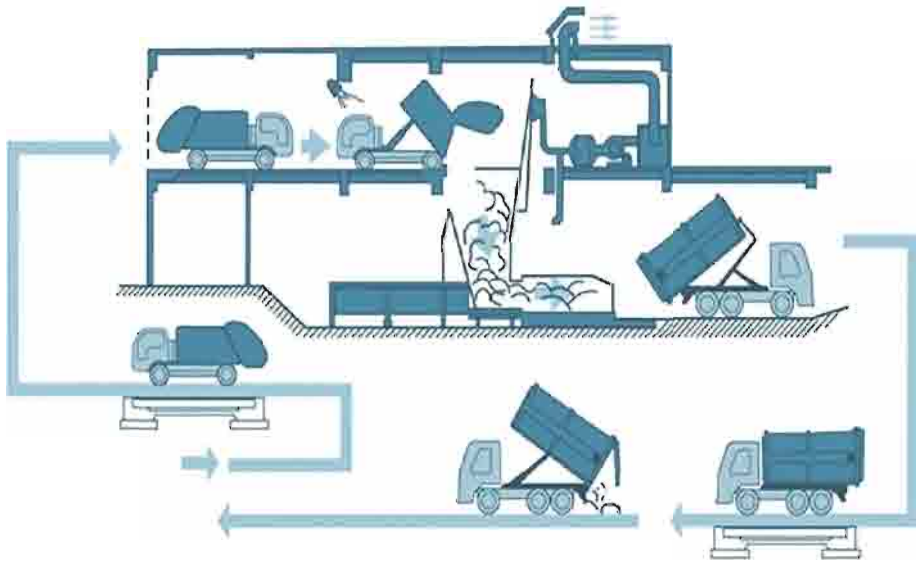


小型二层上料式垃圾压缩设备



项目	单位	参数
垃圾处理能力	V/8h	150-200
最大压缩力	KN	405
最大系统压力	Mpa	30
压缩腔容积	m ³	3.5
功率	KW	11
电源	V	380
装载容积	m ³	17/20
上料方式	后平台上料、侧平台上料	

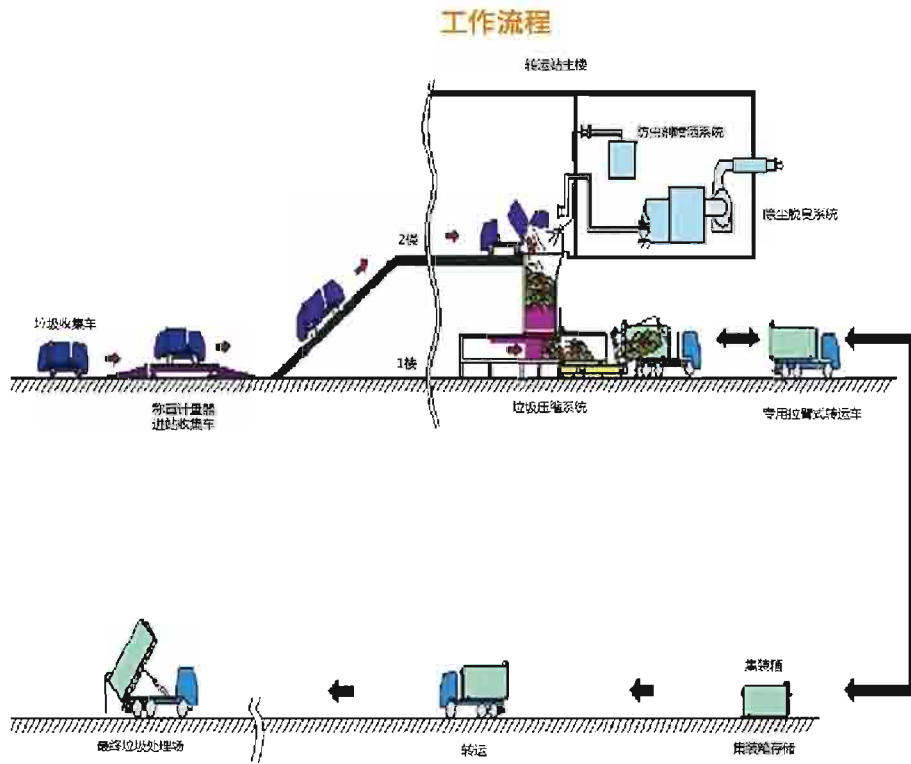
工作流程



项目	单位	参数	参数
设备电源需求	V	380	380
电机功率	KW	15	18.5
设备最大压缩力	KN	420	430
垃圾压缩密度	t/m ³	0.8	0.8
配套垃圾箱容积	m ³	20	20
工位转换系统	/	油缸移箱机构	油缸移箱机构
设备日处理能力	t/8h	200-220	220-250
压缩头行程	mm	500	500

大型二层上料式垃圾压缩设备





项目	单位	参数
设备电源需求	V	380
电机功率	KW	22+15
设备最大压缩力	KN	430
垃圾压缩密度	t/m ³	0.8
配套垃圾箱容积	m ³	20/25/28
工位转换系统	/	油缸移箱机构
设备日处理能力	t/8h	250-300
压缩头行程	mm	800

转运站处理模式参考图 Reference picture of transferring station processing



自装卸式垃圾车（餐厨垃圾车）系列

Self-loading garbage truck (Restaurant Refuse Collector)

It mainly used to collect and transport urban and rural of eat hutch garbage. The brands of chassis are , etc, EUROIV. Restaurant Refuse Collector: 3m³, 5m³, 8m³, etc. feed mechanism: small barrel feeding mechanism (120L), large barrel feeding mechanism (240L), or large end small bucket of general feeding mechanism. Other options: washing equipment, waste heating device, hogwash oil suction device, weighing device, etc.



车厢有效容积 (m³) VOLUME OF BODY: 3.1m³, 4.2m³, 5.5m³, 6.5m³, 8m³

自装卸式垃圾车（餐厨垃圾车）技术特点

Technical features of Self-loading garbage truck (Restaurant Refuse Collector)



整车 The whole truck

- Self-loading garbage truck (Restaurant Refuse Collector) can work for collection and transportation of urban and rural of eat hutch garbage, chassis are , they all have mature technology, perfect dynamic property, attractive appearance, reasonable distribution of axle load, traffic safety assurance, and can fully meet the demand of the urban environment.

圆形罐体 Circular tanks

- The body has circular cross section and closed structure, stiffness is strong, in the meantime, this cross section shape is more conducive to half kitchen waste liquid moving quickly in the back under the condition of vehicles running full turbulence, decreased the driving risk because of the unsteady Center of gravity. The material can be structural alloy steel or stainless steel. The circular tanks Also can reduce the operation process and the interference of roadside trees.

附加装置 Additional device

- The truck can be equipped with specified functions of GPS devices, and electronic identification chip, tank heating device, weighing metering device, etc .

污水箱 Drain tank

- In allusion to characteristic of much water, there is a large volume of waste under the tanker, to store the filter out oil-water, realizing the prefractionation of solid and liquid. The large volume of waste is convenient for moderate squeeze of push shovel, to make full use of the tank volume, and improve the ability of loading.

液压系统 Hydraulic system

- The hydraulic system use multi-way valve control , control board is equipped on the plat of right side of truck, near to the cab, convenient for observation and operation. The oil pipes line up, beautiful and overall arrangement reasonable. The push shovel and feed mechanism have interlock device, when the push shovel is not in place, the feed mechanism can't work, to avoid the garbage is pushed to the front of the shovel because of wrong operation.



悬臂式上料机构 Overhung feed mechanism

- Feed mechanism for 120 L and 240 L standard rubbish bin is equipped on the right side of truck, convenient for feeding. This facility is connecting rod form, simple construction, high strength, stable and reliable operation. There is safety device when mechanism drop down, to prevent garbage bin fall off. There is detaching gear, to ensure that trash can be born with feeding mechanism automatic separation.

进料口机构 Feed port agency



- Feed mechanism is connected with the cover, only open during feeding, to ensure the cover is closed when driving, to avoid a single set of open control mechanism the additional operation and maintenance costs.

防飞溅围挡 Splash proof



- There is splash proof around the feed port agency, to reduce the feeding spilled water leakage in the process of dumping.

冲洗装置 Washing equipment



- To make repairing and maintenance easy, tool box and high pressure water tank are fixed on the left side platform of tank. Auto-washing system can be chosen to keep tank inside clean.

后盖密封 Sealing on rear cover



- Rear cover is operated by hydraulic system, and its sealing with tank is achieved by hydraulic moving drifts. When working, sealing joint strip is compressed properly to keep reliable seal, and sewage will not leak through. Sealing joint strip is made by oil resistant rubber to make it longer life.

检修口 Access hole



- There is an access hole on the top of tank. Its aim is to keep convenience when repairman go inside to check and repair push plate, valves and other equipments in the tank.

推铲机构 Pushing plate system



■ There is a pushing plate in the tank. It can move by driving from hydraulic cylinder and guiding from nylon slide block on both sides, to achieve compress and discharge garbage. Pushing plate is made to roundness shape, to form a whole sealing ring between plate and tank when there are multistage arc wear-resisting slider. Slider is manufactured once, fixed by multistage variable type. There is two elastic sealing ring between slider inside and pushing plate. Firstly, this kind of structure can minimizing the frictional drag, on the other hand, the sealing ring can keep tight touch all the time, to avoid leaving garbage on the front of pushing plate. It can keep all the front devices clean.



2013年青岛市政公用局20辆餐厨垃圾车发车仪式



型号 (TYPE)	5160-1
车厢容积 (VOLUME OF BODY)	8m ³
底盘型号(CHASIS MODEL)	T5G ZZ1167K501GE1
排放标准(EMISSION STANDARD)	国V
发动机型号(ENGING TYPE)	MC05.18-50 MC05.21-50
发动机功率(ENGING OUTPUT)	132kw 151kw

型号 (TYPE)	5160-2
车厢容积 (VOLUME OF BODY)	8m ³
底盘型号(CHASIS MODEL)	T5G ZZ1167H501GD1
排放标准(EMISSION STANDARD)	国IV
发动机型号(ENGING TYPE)	MC05.18-40 MC05.21-40
发动机功率(ENGING OUTPUT)	132kw 151kw

型号 (TYPE)	5120
车厢容积 (VOLUME OF BODY)	6m ³
底盘型号(CHASIS MODEL)	T5G ZZ1127H421GD1
排放标准(EMISSION STANDARD)	国IV
发动机型号(ENGING TYPE)	MC05.18-40 MC05.21-40
发动机功率(ENGING OUTPUT)	132kw 151kw



型号 (TYPE)	5080-1
车厢容积 (VOLUME OF BODY)	4m ³
底盘型号(CHASIS MODEL)	重汽轻卡 ZZ1087D3614D180
排放标准(EMISSION STANDARD)	国IV
发动机型号(ENGING TYPE)	CY4102-CE4D YN38CRD2
发动机功率(ENGING OUTPUT)	83kw 85kw



型号 (TYPE)	5080-2
车厢容积 (VOLUME OF BODY)	4m ³
底盘型号(CHASIS MODEL)	福田 BJ5089XXY-FA
排放标准(EMISSION STANDARD)	国V
发动机型号(ENGING TYPE)	ISF3.8s5141 ISF3.8s5154
发动机功率(ENGING OUTPUT)	105kw 115kw



型号 (TYPE)	5160
车厢容积 (VOLUME OF BODY)	8m ³
底盘型号(CHASSIS MODEL)	东风天锦 DFL1160BX1V
排放标准(EMISSION STANDARD)	国V
发动机型号(ENGINE TYPE)	ISD210 50 ISD180 50
发动机功率(ENGINE OUTPUT)	155kw 132kw

型号 (TYPE)	5120
车厢容积 (VOLUME OF BODY)	6m ³
底盘型号(CHASSIS MODEL)	东风天锦 DFL1120B21
排放标准(EMISSION STANDARD)	国V
发动机型号(ENGINE TYPE)	ISD180 50 ISD160 50
发动机功率(ENGINE OUTPUT)	132kw 118kw



型号 (TYPE)	5122
车厢容积 (VOLUME OF BODY)	5m ³
底盘型号(CHASSIS MODEL)	东风天锦 DFL1120B3
排放标准(EMISSION STANDARD)	国IV
发动机型号(ENGINE TYPE)	ISDe160 40 ISDe180 40
发动机功率(ENGINE OUTPUT)	118kw 132kw

型号 (TYPE)	5123
车厢容积 (VOLUME OF BODY)	6m ³
底盘型号(CHASSIS MODEL)	东风天锦 DFL1120B3
排放标准(EMISSION STANDARD)	国IV
发动机型号(ENGINE TYPE)	ISDe160 40 ISDe180 40
发动机功率(ENGINE OUTPUT)	118kw 132kw



型号 (TYPE)	5162
车厢容积 (VOLUME OF BODY)	8m ³
底盘型号(CHASSIS MODEL)	东风天锦 DFL1160BX4
排放标准(EMISSION STANDARD)	国IV
发动机型号(ENGINE TYPE)	ISDe210 40 ISDe185 40
发动机功率(ENGINE OUTPUT)	155kw 136kw



型号 (TYPE)	5080
车厢容积 (VOLUME OF BODY)	4m ³
底盘型号(CHASSIS MODEL)	东风多利卡 DFA1080SJ12D3
排放标准(EMISSION STANDARD)	国IV
发动机型号(ENGINE TYPE)	YC4E140-42 ISB3.9-125E40A
发动机功率(ENGINE OUTPUT)	103kw 92kw



型号 (TYPE)	5070
车厢容积 (VOLUME OF BODY)	4m ³
底盘型号(CHASSIS MODEL)	东风凯普特 DFA1070SJ41D6
排放标准(EMISSION STANDARD)	国IV
发动机型号(ENGINE TYPE)	ZD30D13-4N D28D11-4DA
发动机功率(ENGINE OUTPUT)	96kw 85kw



型号 (TYPE)	5071
车厢容积 (VOLUME OF BODY)	3m ³
底盘型号(CHASSIS MODEL)	庆铃QL1070A1HAY
排放标准(OUTPUT STANDARD)	国IV
发动机型号(ENGINE TYPE)	4KH1-TCG40
发动机功率(ENGINE OUTPUT)	88kw



型号 (TYPE)	5160
车厢容积 (VOLUME OF BODY)	8m ³
底盘型号(CHASSIS MODEL)	解放CA1167PK2BE4A80
排放标准(EMISSION STANDARD)	国IV
发动机型号(ENGINE TYPE)	BF4M2012-16E4 BF6M2012-18E4
发动机功率(ENGINE OUTPUT)	121kw 139kw

扫路车 Sweeper truck

brand wet sweeper truck is based on years of accumulated technology and a lot of experimental data and the new optimized design of a new generation of road sweeping vehicles, including the fan, nozzle system, dust suppression systems do a new design. Fan running smoothly after the optimized design, low noise, strong negative pressure, the pick-up effect can pick up bricks and other large particles of trash, sweep combined with self-developed suction nozzle, even at high speeds when the garbage will not miss the job, clean rate of 98%. The new design includes a water spray dust suppression system dust and physical centrifugal dust in two parts, a good dust effects. Automatic protection support systems, automatic protection supported by gravity, to avoid human operation to bring security risks, dismantling mechanism operated by a cylinder, easy to operate, greatly improve the operational safety of the car. This model has a strong pick-up, cleaning job fast, no dust and so on. It can be widely adapted to urban roads, highways, bridges, airports, docks and other asphalt pavement and cement concrete pavement mechanized sweeping and cleaning operations.



车辆型号(TYPE)	车箱容积(VOLUME OF BODY)	底盘型号(CHASIS MODEL)	排放标准(EMISSION STANDARD)
160-1	6m³	M5G ZZ1161H501GE1	国V
160-2	6.5m³	T5G ZZ1167K501E1-045	国V
160-3	6.5m³	解放 CA1167PK2BE5A80	国V

主要参数底盘型号 Main parameter

		项 目 Item	单 位	参 数 Unit
尺寸参数 Dimension Parameter	外型尺寸 Overall Dimension	长 Length	mm	7200
		宽 Width		2500
		高 Height		3400
	轴距Wheel Base	I-II	4500	
	前/后悬 Front Suspension/Rear Suspension		1308/1412	
质量参数 Weight Parameter	空载 No-Load	整车整备质量 Curb Weight	mm	10220
		前轴轴载质量 Front Axle		4640
		后桥轴载质量 (II轴) Rear Axle(II axles)		5580
	最大装载质量 Dead Weight	kg	5650	
	最大总质量Kg Max.Gross Weight	kg	16000	
乘员数 (含驾驶员) Crew(Including Driver)	人	2		
性能参数 Performance Parameter	最高车速 Max. Speed	km/h	95	
	发动机型号 Engine Model		MC05.18-50国V	
	最大功率 Max. Engine Power	kW(rpm)	132/2400	
	副发动机型号 Vice-Fan Engine Model		493ZG-232(12V)国II	
专用性能参数 Cleaning Performance Parameter	水箱有效容积 Water Tank Volume	L	3000	
	垃圾箱有效容积 Garbage Tank Volume	M3	6	
	喷水流量 Water Flow	L/Min	≥180	
	最大清扫宽度 Max. Cleaning Width	M	全扫3.7	
	清扫速度 Cleaning Speed	km/h	7-9	
	保洁速度 Cleaning Speed(rough cleaning)	km/h	9-15	
	最大清扫能力 Max. Cleaning capacity	m²/H	55500	
	最大吸入粒度 (密度小于2g/cm³的当量直径) Max. particle size(density<2g/cm³, equivalent diameter)	mm	70	
	卸料倾角 Unloading angle	°	≥50	

垃圾转运车系列 Garbage transfer vehicle series

Apply to transfer the life refuse in city, it is strength in a large amount of the loading and transport ability. Chassis or tractor can choose and other well-known brands, emission standard is EURO IV, EURO V. Body volume of 24m³, 37m³, 40m³ and others.



垃圾转运车代表车型参数 Specification for behalf of model of the garbage transfer vehicle

车辆型号	5252
底盘型号 CHASIS MODEL	ZZ3257N4347D1 (国IV)
外形尺寸 (mm) (长×宽×高) OVERALL (L×W×H) DIMENSIONS	9715 × 2496 × 3370
液压系统工作压力 (MPa) PRESSURE OF FLUID SYSTEM	12
整备质量 (kg) CURB MASS	14900
装载质量 (kg) SPECIFIED WEIGHT	9970
最大总质量 (kg) TOTAL MASS	25000
最高车速 (km/h) MAXSPEED	78
发动机型号 ENGING TYPE	D10.34-40 D10.38-40
发动机功率 (kW/r/min) OUTPUT	249/2200 276/2200
车厢有效容积 (m ³) VOLUME OF BODY	24
推卸垃圾时间 (s) TIME OF ONE DISLOADING	≤50

产品技术特点 technical characteristics

- Chassis is and other well-known brands, good power, less fuel, stability operation. Engine emissions is standard for EUOR III or IV.
- Excellent selection of installed components, good rigidity, high strength, anti-corrosion treatment, long vehicle life.
- International famous brand for key hydraulic pressure component, High reliability, and low fault.
- Style of operation is electric control, it's convenient and reliable.
- Tops automate for body. Pushing and dumping can be operat inside of cab or outside.
- Body working with engine accelerate. Fuel-saving effect is obvious.
- Sealing strip Located between the body and the back door, good sealing and have sewage tank in front and back. It can effectively solve the problem of sewage collection and sprinkle.





型号 (TYPE)	5252
车厢容积 (VOLUME OF BODY)	24m ³
底盘型号(CHASIS MODEL)	豪沃ZZ3257N4347D1
排放标准(EMISSION STANDARD)	国IV



型号 (TYPE)	5310-1
车厢容积 (VOLUME OF BODY)	26.5m ³
底盘型号(CHASIS MODEL)	豪沃ZZ3317N3267D1
排放标准(EMISSION STANDARD)	国IV



型号 (TYPE)	5310-2
车厢容积 (VOLUME OF BODY)	26.5m ³
底盘型号(CHASIS MODEL)	豪沃ZZ3317N3267E1
排放标准(EMISSION STANDARD)	国V



型号 (TYPE)	9340
车厢容积 (VOLUME OF BODY)	40m ³
底盘型号(CHASIS MODEL)	半挂车 (Semi Trailer)
排放标准(EMISSION STANDARD)	

洒水车系列 Sprinkler series

Sprinkler standard configuration: Front rear sprinkler systems, sprinklers, high pressure spray gun, which can realize artesian drainage, automatic suction function, with two four meters long suction pipe, vats with anticorrosive processing



型号 (TYPE)	车厢容积 (VOLUME OF BODY)	底盘型号 (CHASIS MODEL)	排放标准 (EMISSION STANDARD)
5160-1	12m ³	斯太尔ZZ1161H471GD1	国IV
5160-2	12m ³	豪沃ZZ1167H501GD1	国IV
5160-3	12m ³	豪沃ZZ1167H501GE1	国V
5160-4	12m ³	ZZ1161H501GE1	国V



型号 (TYPE)	车厢容积 (VOLUME OF BODY)	底盘型号 (CHASIS MODEL)	排放标准 (EMISSION STANDARD)
5250-1	20m ³	斯太尔ZZ1251N444GD1	国IV
5250-2	20m ³	斯太尔ZZ1251N464GE1	国V
5250-3	20m ³	豪沃ZZ1257N464GD1	国IV
5250-4	20m ³	豪沃ZZ1257N464GE1	国V

高压清洗车系列

High pressure cleaning vehicle series

青专牌高压清洗车底盘选用国内知名厂家产品，如中国重汽、东风等，国IV、国V排放标准。水箱容积7m³、8m³、10m³。高压清洗车主要用于清洗城市公路、广场路面，下水道、管道的沉积物、死角泥沟的疏通，也可用于清洗工业排水管道、壁面等，紧急时可用于救火。

青专牌高压清洗车高压水泵系统采用国际名牌产品，性能可靠，使用寿命长。水罐设有低水位传感报警系统，无水时自动报警，防止水泵缺水损坏，同时设有二级低水位传感系统，水位过低时自动控制副发动机熄火；水罐内壁采用先进工艺防腐处理，不锈蚀。

采用模块式设计，实现前线喷、点喷、侧喷、远程喷多种清洗功能；具有前洒水、后冲水及侧冲水装置及其他辅助工作功能，一机多用。

系统高压泵连接分支，配备下水道清洗单元、清洗喷嘴、液压卷盘，卷盘器带自由轮功能，可收放50米胶管。



车辆型号(TYPE)	车箱容积(VOLUME OF BODY)	底盘型号(CHASSIS MODEL)	排放标准(EMISSION STANDARD)
5160-1	8m³	T5G ZZ1167K501GE1	国V
5160-2	8m³	M5G ZZ1161H501GE1	国V
5160-3	7m³	T5G ZZ1167K501GD1	国IV
5160-4	8m³	M5G ZZ1161H471GD1	国IV
5160-5	10m³	东风 DFL1160BX4	国IV

吸污车系列

Vacuum cleaning truck series

青专牌吸污车选用中国重汽、东风等载货汽车底盘，加装压力罐体、真空泵、吸污胶管、液压系统、管网系统等改装而成。罐体封头一次压制成型、罐体后门可开启、双液压缸自卸。具有真空度高、吨位大、效率高、用途广泛等特点。可广泛适用于收集城市雨水井、检查井及各种沟渠内的污泥、污水或石油化工污水池淤积物的抽吸、装运和排卸，也可用于干旱、内涝等救援工程，应用于大、中、小城镇环卫、市政、农业、化工、厂矿企业、物业小区等部门。



5160-B

车箱容积(VOLUME OF BODY)	底盘型号(CHASSIS MODEL)	排放标准(EMISSION STANDARD)
9.7m³	M5G ZZ1161H501GE1	国V

产品技术特点 technical characteristics

青专牌吸污车选用优质国产或进口真空泵，真空度最高可至99.6%，汽车在怠速状态下即能正常工作，耗油量低、噪音小，泵的使用寿命长；抽吸系统密封良好，选用优质密封圈，具有良好的抽吸效果。具有满罐报警功能，防止过量抽吸。有效可靠的防溢流装置能防止污水因吸满而倒灌至真空泵系统。

罐体参照压力容器标准制造，罐体及管路酸洗后电镀防锈漆，保证罐体及管路不变形，不生锈。具有自卸功能，罐内残留污物可通过后盖直接倾倒。

其它环卫车辆

Other sanitation vehicles



侧装压缩车 Side-mounted compression vehicle



自卸式垃圾车 Garbage dump truck



桶装垃圾运输车 Barreled garbage truck



吸污车 Vacuum cleaning truck



除雪车 Snow sweeper



高压清洗车 High pressure cleaning vehicles



扫路车 Street sweeper



侧装式垃圾车 Side loading type garbage truck



摆臂式垃圾车 Arm type garbage truck



路面养护车 Pavement maintenance truck

