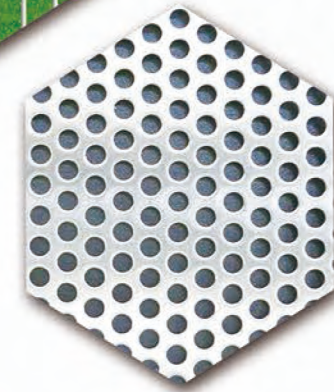
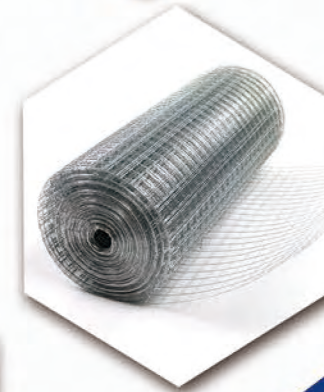


**CONSTRUCTION  
MATERIALS**





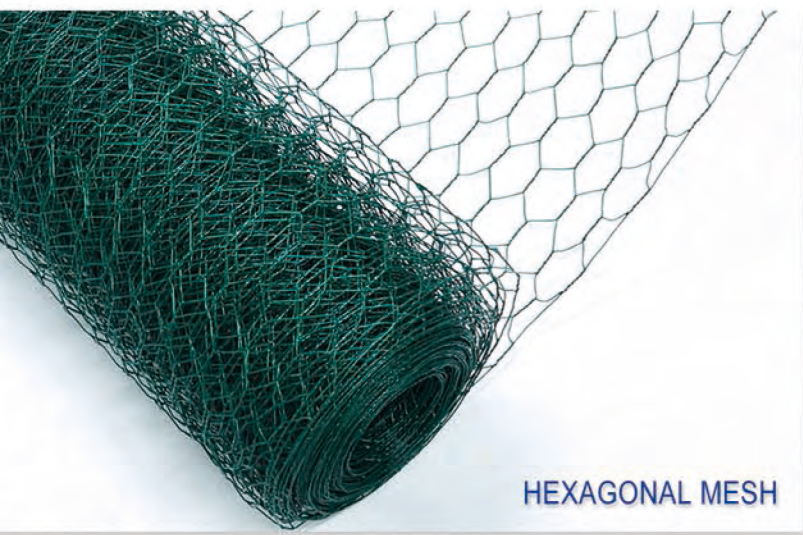
# PRODUCT HIGHLIGHTS



STAINLESS STEEL MESH



WELDED WIRE MESH



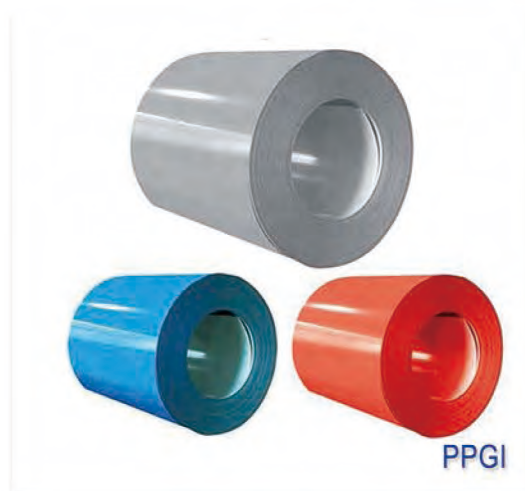
HEXAGONAL MESH



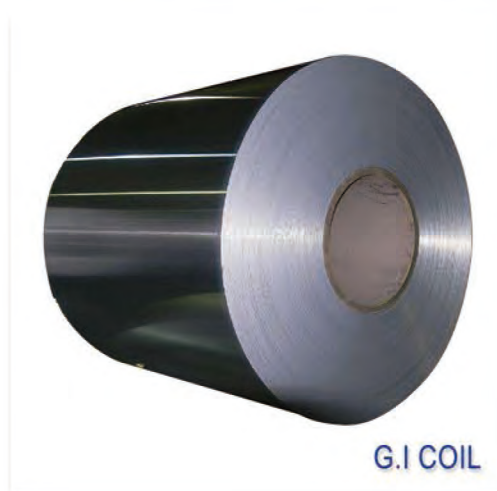
STEEL PIPE



FENCE



PPGI



G.I COIL

## TABLE OF CONTENT

PRODUCT HIGHLIGHTS	01
TABLE OF CONTENT	02
01   COMPANY PROFILE	03
<b>02   WIRE MESH PRODUCTS</b>	<b>04</b>
WELDED MESH / PANEL	
GALVANIZED WELDED MESH / PANEL	05
PVC COATED WELDED MESH / PANEL	06
REINFORCING MESH SHEETS	07
CRIMPED WIRE MESH	
WOVEN WIRE MESH	08
STAINLESS STEEL WIRE MESH	09
HEXAGONAL WIRE MESH	10
GABION MESH	11
STEEL GRATE	12
PERFORATED SHEET	13
EXPANDED METAL SHEET	14
WIRE MESH FENCE	15
CHAIN LINK FENCE	16
CATTLE / LIVESTOCK FENCE	17
WROUGHT IRON FENCE	18
DOUBLE WIRE FENCE	19
358 SECURITY FENCE	20
TEMPORARY FENCE	21
CROWD CONTROL BARRIER	22
WIRE MESH CONTAINER	23
SECURITY SCREEN MESH	24
BARBED WIRE	25
RAZOR BARBED WIRE	26
BARBED WIRE	27
<b>03   STEEL SHEETS PRODUCTS</b>	<b>28</b>
GALVANIZED STEEL COIL/ SHEET	29
GALVALUME STEEL COIL/ SHEET	30
PPGI / PPGL	31
CORRUGATED ROOFING SHEET	32
GALVANIZED ROUND PIPE	33
GALVANIZED SQUARE PIPE	34



# COMPANY PROFILE

We are an international business group specializing in the production and export of construction materials, hardware products, cleaning products, machinery and equipment, and rubber products. As the business continues to grow every year, Yeson Group has become one of the leading import and export companies in China.

Now we have three branches in China and abroad with professional wire mesh manufacturing factory, steel plate factory and professional import and export trading company. All products have obtained many certificates such as CE, SGS, and ISO9001 quality system certification. Meanwhile, we are continuously acquiring related factories according to market changes to increase the Group's competitive advantage.

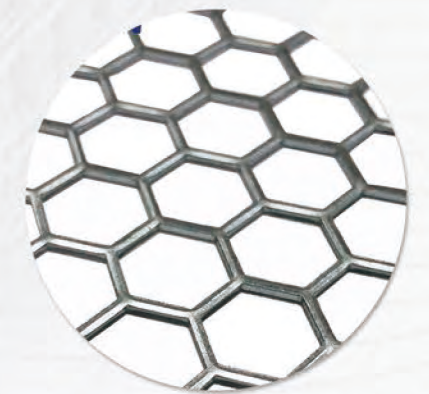
Group's philosophy is based on integrity, quality, efficiency and excellence. We are proud of our ambitious, creative, young and well-trained team. Through professional and scientific operations, we will continue to provide high-quality products, competitive prices and professional export services to all new and old customers.



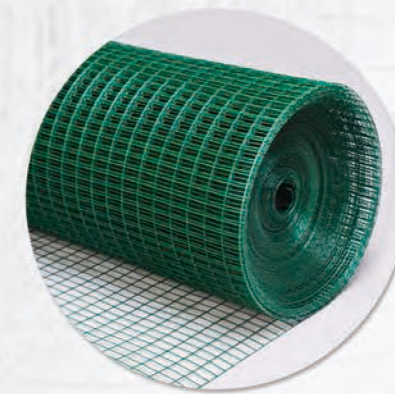
## WIRE MESH PRODUCTS



STAINLESS STEEL  
WIRE MESH



PERFORATED MESH



WELDED WIRE MESH



## WELDED MESH / PANEL



### GALVANIZED WELDED MESH / PANEL

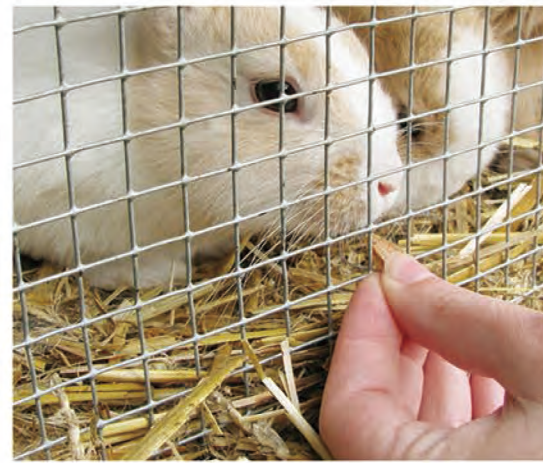
- \* Material: Low carbon steel wire Q195
- \* Processing mode: welded
- \* Classification:
  - I. Electric galvanized welded mesh;
  - II. Hot dipped galvanized welded mesh;
- \* Application: Industry, agriculture, building, transportation and mining. Mainly used in wall building, concrete placing, kinds of fencing and decoration.



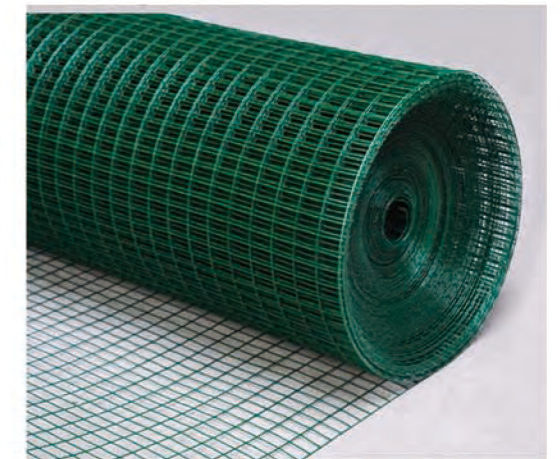
### PVC COATED WELDED MESH / PANEL

- Material: Low carbon steel wire Q195
- Processing mode: welded
- Classification:
  - I. Black wire welded mesh + pvc coated;
  - II. Electro galvanized welded mesh + pvc coated
  - III. Hot dipped galvanized welded mesh + pvc coated.
 (PVC coated colors: dark green, light green, blue, yellow, white, black, orange and red, etc.)
- Application: Industry, agriculture, building, transportation and mining. Mainly used in wall building, concrete placing, kinds of fencing and decoration.

WELDED WIRE MESH				
Hole Size		Wire Diameter		Width & Length
In Inch	In MM	In BWG	In MM	
1/2"	12.7mm	BWG16 - BWG28	1.65mm - 0.356mm	Width: 0.5m-2.0m Length: 25m, 30m  Other sizes can be made as request
3/4"	19.05mm	BWG16 - BWG27	1.65mm - 0.406mm	
1"	25.4mm	BWG14 - BWG20	2.1mm - 0.88mm	
1" x 2"	25.4 x 50.8mm	BWG14 - BWG19	2.1mm - 1.06mm	
2"	50.8mm	BWG12 - BWG18	2.76mm - 1.24mm	
2" x 4"	50.8 x 101.6mm	BWG10 - BWG18	3.4mm - 1.24mm	
1/4"	6.35mm	BWG19 - BWG24	1.06mm - 0.56mm	
3/8"	9.52mm	BWG18 - BWG27	1.24mm - 0.406mm	
5/8"	16mm	BWG18 - BWG27	1.24mm - 0.406mm	
New mesh sizes: 1" x 1/2", 30 x 30mm, 60 x 60mm				



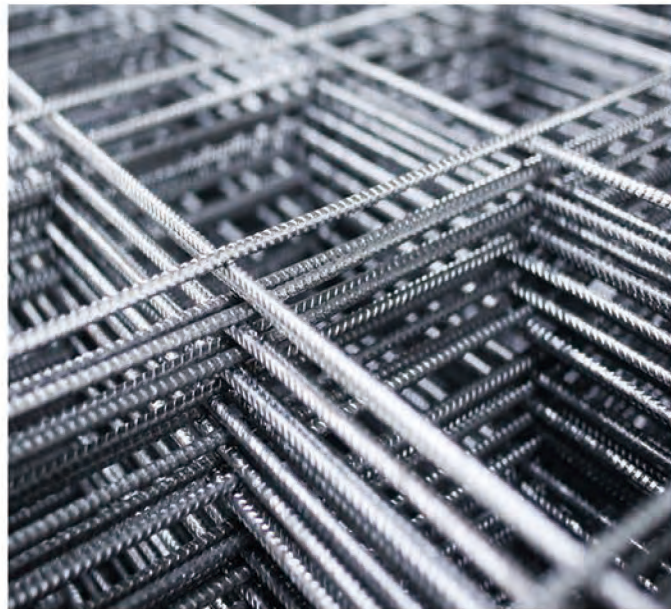
PVC COATED WELDED MESH ROLL					
Hole Size		Wire Diameter		Width & Length	
In Inch	In MM	Before coating	After coating		
1/2"	12.7mm	0.45mm - 1.6mm	0.85mm - 2.1mm	Width: 0.5m-2.0m Length: 25m, 30m  Other sizes can be made as request	
3/4"	19.05mm	0.45mm - 1.6mm	0.85mm - 2.1mm		
1"	25.4mm	0.88mm - 2.1mm	1.35mm - 2.6mm		
2"	50.8mm	1.0mm - 1.82mm	1.45mm - 2.4mm		
2" x 4"	50.8 x 101.6mm	1.24mm - 1.82mm	1.7mm - 2.4mm		
1/4"	6.35mm	0.56mm - 0.88mm	1.0mm - 1.4mm		
3/8"	9.52mm	0.457mm - 1.06mm	0.91mm - 1.6mm		
5/8"	16mm	0.457mm - 1.4mm	0.91mm - 2.0mm		
Note: pvc coated thickness can be adjusted					



WELDED MESH PANEL				
Hole Size		Wire Diameter		Panel Sizes
In Inch	In MM	In BWG	In MM	
1/2" x 1/2"	12.7 x 12.7mm	BWG16 - BWG28	1.65mm - 0.356mm	Common sizes: 3' x 6'; 4' x 8'; 5' x 10'; 1 x 2m; 2 x 2.9m; 2 x 4m  Other sizes can be made as request
1" x 1"	25.4 x 25.4mm	BWG16 - BWG27	1.65mm - 0.406mm	
1" x 2"	25.4 x 50.8mm	BWG14 - BWG20	2.1mm - 0.88mm	
5/4" x 5/4"	31.8 x 31.8mm	BWG14 - BWG19	2.1mm - 1.06mm	
3/2" x 3/2"	38.1 x 38.1mm	BWG12 - BWG18	2.76mm - 1.24mm	
2" x 2"	50.8 x 50.8mm	BWG10 - BWG18	3.4mm - 1.24mm	
2" x 3"	50.8 x 76.2mm	BWG8 - BWG18	4.2mm - 1.24mm	
3" x 3"	76.2 x 76.2mm	BWG8 - BWG18	4.2mm - 1.24mm	
4" x 4"	101.6 x 101.6mm	BWG6 - BWG11	5.1mm - 3.0mm	
5" x 5"	127.0 x 127.0mm	BWG4 - BWG8	6.0mm - 4.2mm	
6" x 6"	152.4 x 152.4mm	BWG4 - BWG8	6.0mm - 4.2mm	

PVC COATED WELDED MESH PANEL			
Hole Size		Wire Diameter	Panel Sizes
In Inch	In MM	In MM	
1/2" x 1/2"	12.7 x 12.7mm	1.0mm - 2.0mm	Common sizes: 3' x 6'; 4' x 8'; 5' x 10'; 1 x 2m; 2 x 2.9m; 2 x 4m  Other sizes can be made as request
1" x 1"	25.4 x 25.4mm	1.5mm - 3.5mm	
1" x 2"	25.4 x 50.8mm	2.0mm - 5.0mm	
5/4" x 5/4"	31.8 x 31.8mm	2.0mm - 4.0mm	
3/2" x 3/2"	38.1 x 38.1mm	2.0mm - 5.0mm	
2" x 2"	50.8 x 50.8mm	2.0mm - 6.0mm	
2" x 3"	50.8 x 76.2mm	2.0mm - 6.0mm	
3" x 3"	76.2 x 76.2mm	3.0mm - 7.0mm	
4" x 4"	101.6 x 101.6mm	3.0mm - 8.0mm	
5" x 5"	127 x 127mm	4.0mm - 9.0mm	
6" x 6"	152.4 x 152.4mm	4.0mm - 10.0mm	

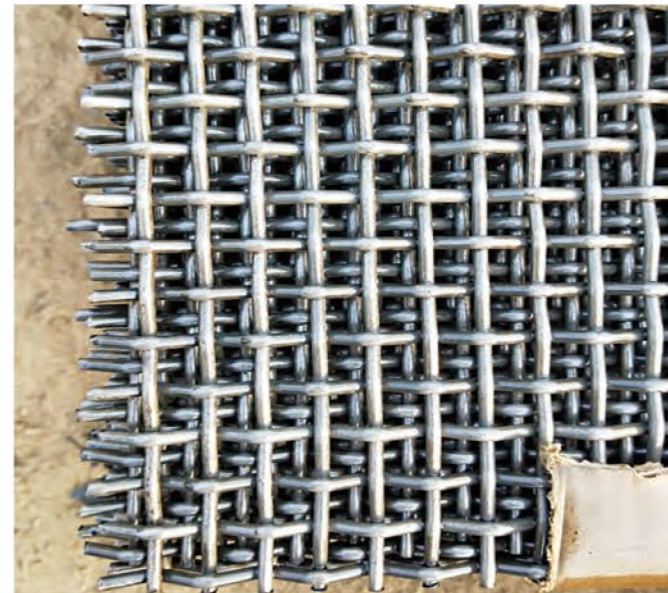
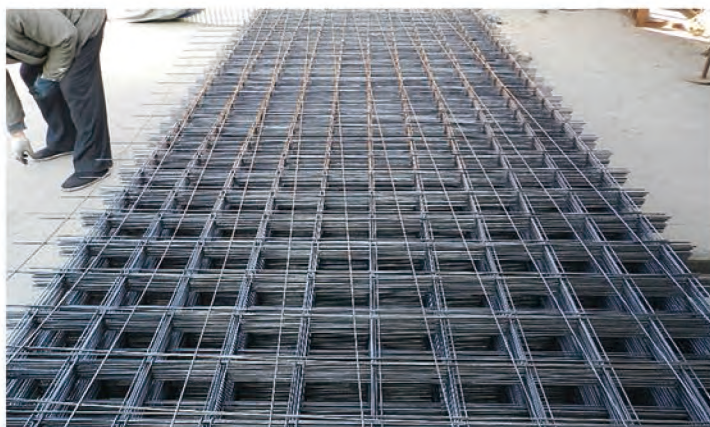
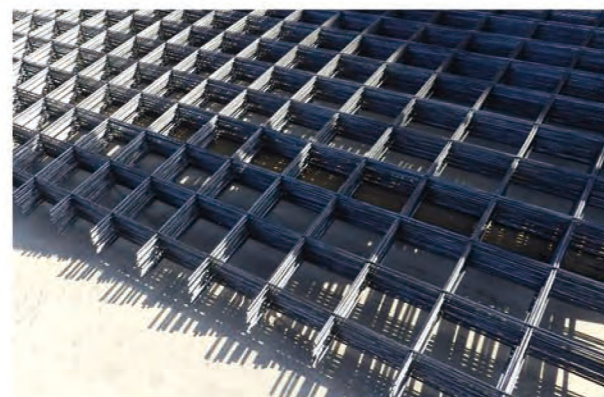




### REINFORCING MESH PANEL

- \* Material: Low carbon steel wire Q195 Q235
- \* Processing mode: welded
- \* Application: House beam, house roof, building board, wall, concrete road, bridge, airfield pavement, highway, water dam, road base and constructions, etc.

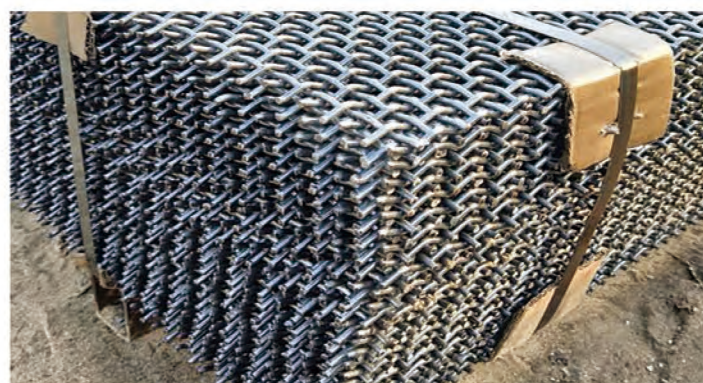
REINFORCING MESH PANEL				
Mesh Size		Wire Diameter		Panel Sizes
In Inch	In MM	In MM	In MM	
2" x 4"	50 x 100mm	4.0mm – 10.0mm		Common sizes: 2.2 x 5.8m, 2.0 x 2.9m  Other sizes can be made as request
3" x 4"	75 x 100mm	4.0mm – 10.0mm		
4" x 4"	100 x 100mm	4.0mm – 12.0mm		
6" x 6"	150 x 150mm	4.0mm – 12.0mm		
8" x 8"	200 x 200mm	4.0mm – 12.0mm		



### CRIMPED WOVEN MESH

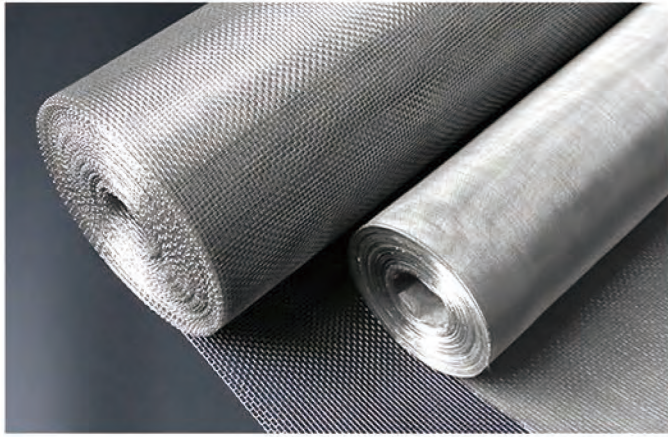
- \* Material: Low/High carbon steel wire, Stainless Steel Wire
- \* Processing mode: Weave after crimped
- \* Classification:
  - Galvanized crimped mesh;
  - Black Wire crimped mesh;
  - Stainless Steel crimped mesh.
- \* Application: Mining, coal mining, petrochemical works, construction, fence, curative and food barbecue, etc..

CRIMPED WOVEN MESH				
No.	Steel Grade	Chemical Composition		
		C	Si	Mn
1	45	0.42-0.50	0.17-0.37	0.50-0.80
2	50	0.47-0.55		
3	55	0.52-0.60		
4	60	0.57-0.65		
5	65	0.62-0.70		
6	70	0.67-0.75		
7	65Mn	0.62-0.70	0.90-1.20	
8	72A	0.70-0.75	0.15-0.35	0.30-0.60





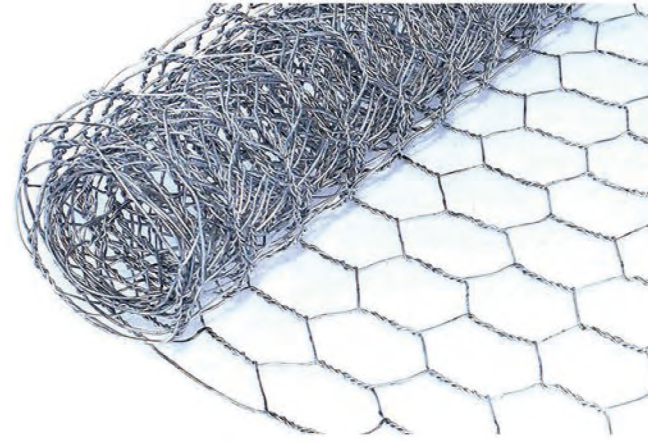
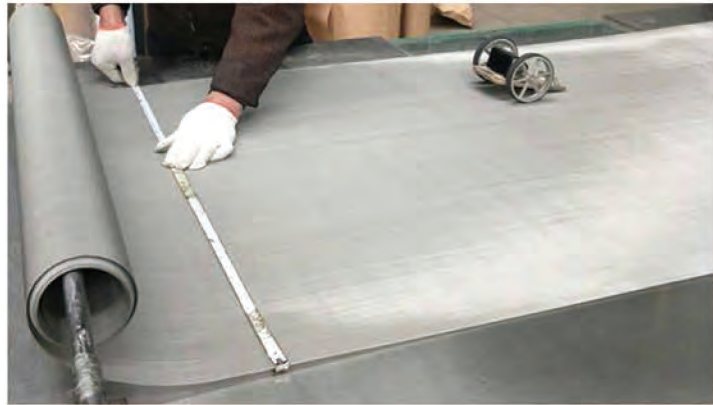
**>> WOVEN WIRE MESH**



**STAINLESS STEEL WIRE MESH**

machines are available for different kinds of woven like plain,twill,dutch,twill and dutch. The specifications of the stainless steel mesh are mainly between 2-636 mesh. stainless steel specification square mesh form 2 to 650 per inch with width from 91.4cm to 800 cm.dutch woven mesh is from 12 X 62 mesh to 400 X 2800 mesh per inch.

STAINLESS STEEL WIRE MESH	
Material	SS wire 201, 304, 304L, 316, 316L, 431, 321 347 etc.
Wire diameter	0.018-2.03mm
Woven style	Plain weave,twill weave,dutch weave,reversed dutch weave,crimped weave
Mesh counts	Plain weave wire mesh can be woven up to 400 mesh.Twill weave wire mesh can be woven from 30 to 635 mesh.
Packaging Details	Inner kraft, outside plastic film, put into wooden pallet or case
Application	Plain/Twill weave stainless steel wire mesh was used for screening and filtering in acid or alkali environment. As mud mesh in oil industry, chemical packing nets, chemical fiber industry as screen mesh, electroplating industry as pickling nets.



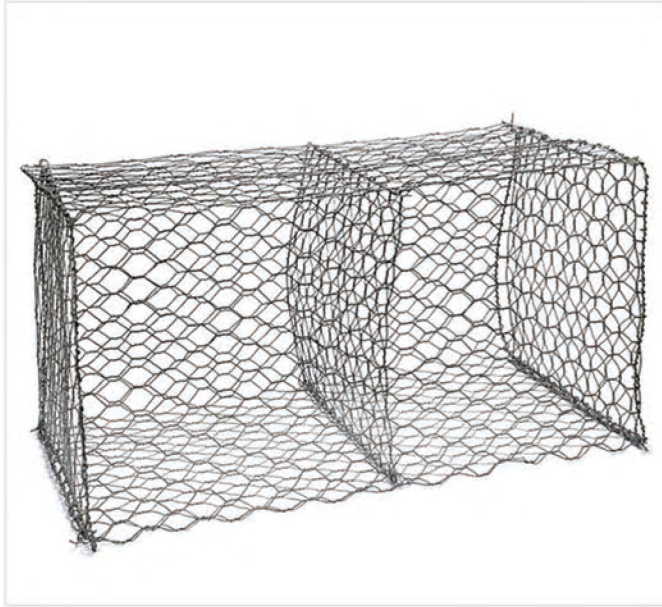
**HEXAGONAL WIRE MESH**

- \* Material: Low carbon steel wire Q195
- \* Processing mode: twist, reverse twist, doubled sided twist
- \* Classification:
  - I. Electro galvanized hexagonal mesh;
  - II. Hot dipped galvanized hexagonal mesh;
  - III. PVC coated hexagonal mesh.
- \* Application: As chicken mesh, it is used in building for chicken, duck, rabbit, and zoo fence, equipment safety fence, highway fence, Stadium fence, and road fence, etc.;

HEXAGONAL WIRE MESH			Panel Sizes
Hole Size		Wire Diameter	
In Inch	In MM	In MM	
3/8"	9.52mm	0.42mm - 0.50mm	Width: 0.5m-2.0m Length: 25m, 30m  Other sizes can be made as request
1/2"	12.7mm	0.38mm - 0.80mm	
5/8"	16mm	0.38mm - 1.0mm	
3/4"	19mm	0.38mm - 1.2mm	
1"	25.4mm	0.38mm - 1.2mm	
5/4"	31mm	0.55mm - 1.2mm	
3/2"	38.1mm	0.55mm - 1.4mm	
2"	50.8mm	0.55mm - 1.5mm	
3"	76.2mm	0.65mm - 1.5mm	
4"	101.6mm	1.2mm - 2.0mm	







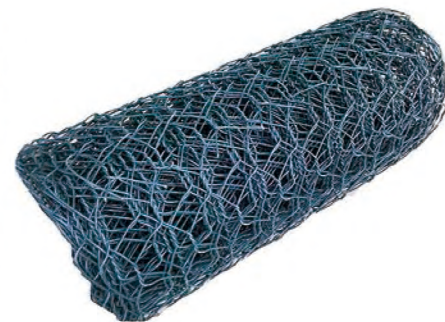
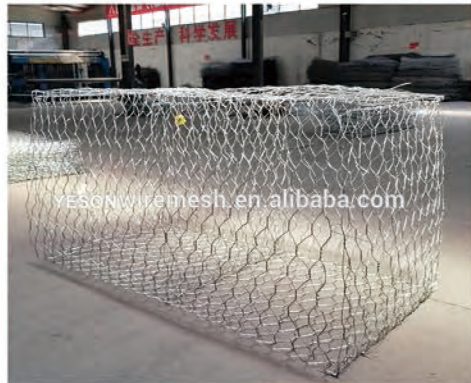
### GABION MESH

Gabion mesh can be made into a box, it is made of heavy galvanized wire/ ZnAl (Galfan) coated wire/PVC coated wires, the mesh shape is hexagonal style.

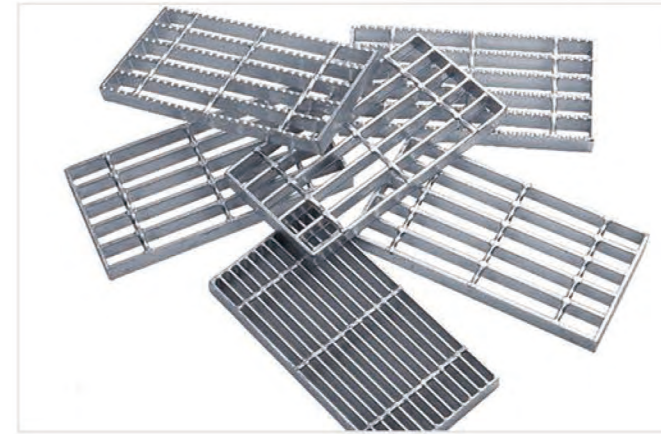
- \* Material: Low carbon steel wire Q195
- \* Processing mode: twist, reverse twist, doubled sided twist
- \* Classification:
  - I. Electro galvanized hexagonal mesh;
  - II. Hot dipped galvanized hexagonal mesh;
  - III. PVC coated hexagonal mesh.
- \* Feature: firm in structure, flat surface, with fine resistant to corrosion or oxidation.

GABION MESH			
Opening (mm)	Wire Diameter (mm)	Strands	Sizes
60 x 80	2.0-2.8	3	2m x 1m x 1m,
80 x 100	2.0-3.2	3	3m x 1m x 1m,
80 x 120	2.0-3.2	3	4m x 1m x 1m,
100 x 120	2.0-3.4	3	2m x 1m x 0.5m,
100 x 150	2.0-3.4	3	4m x 1m x 0.5m,
120 x 150	2.0-4.0	3	Or as request

Some sizes can add reinforcing rib.



### SPECIAL MESH

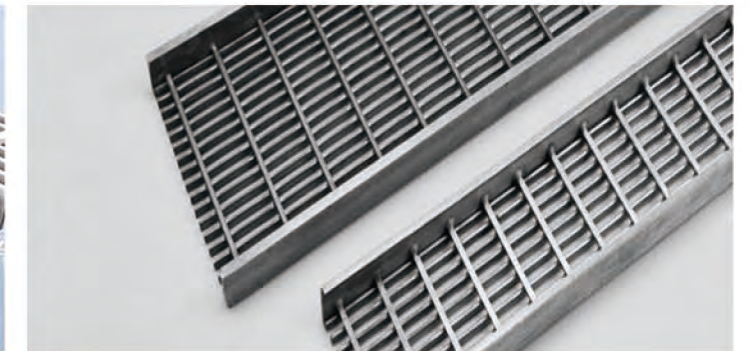
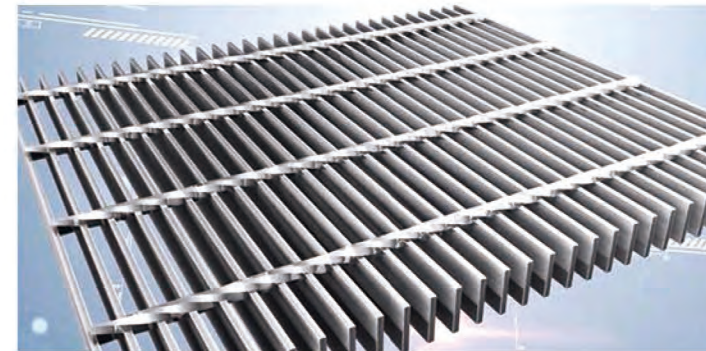


### STEEL GRATE

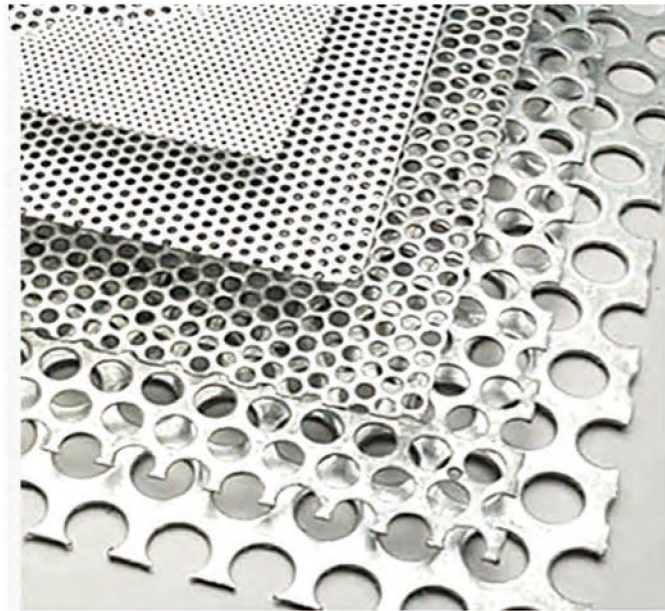
Steel gratings consist of a series of bearing bars cross jointed by welding at various intervals with cross bars (twisted square bars, square bars, round bars, flat bars etc.), to form a kind of steel products with square lattices among them. Their main applications are drain covers, steelwork platform panels, and steel stair treads.

- \* Material: Low carbon steel, stainless steel
- \* Surface treatment: Hot dipped galvanized, painting
- \* Application: Industrial platform flooring and walkway, traffic and steel structure etc.

STEEL GRATE	
material	Steel, Low carbon steel, stainless steel & (Q235, A36, SS304, SS316L, S235JR)
Surface treatment	Black, hot dipped galvanized, paint
Bearing bar width*thickness	25x3, 25x4, 30x3, 30x4, 30x5, 32x5, 40x5, 50x5, .....75x10mm
Bearing bar pitch	12.5, 15, 20, 23.85, 25, 30, 30.16, 30.3, 34.3, 35, 40, 41, 60mm. US standard: 1"x3/16", 1 1/4"x3/16", 1 1/2"x3/16", 1"x 1/4", 1 1/4"x 1/4", 1 1/2"x 1/4" etc.
Bearing bar shape	Plain Style Steel Grating, Serrated Style Steel Grating and I Bar Type Steel Grating.
Drainage steel grating cover drainage ditch standard	China: YB/T 4001.1-2007, USA: ANSI/NAAMM(MBG531-88), UK: BS4592-1987, Australia: AS1657-1985, Japan: JJS.
Cross bar shape	round, twisted, bar shape
Cross bar pitch	38, 50, 76, 100, 101.6mm
Galvanizing standard	US: ASTM (A123), CN: GB/T13912, UK: BS729
Market distribution	America 45%, Europe 26%, Middle east 38%, Other place 27%







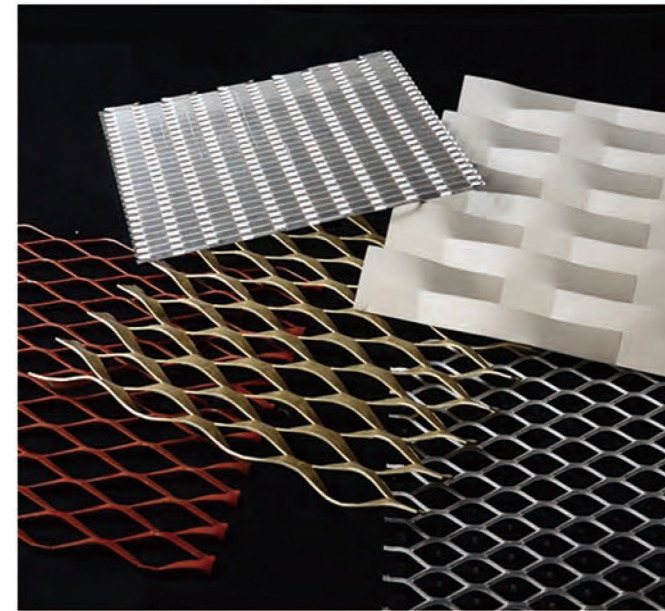
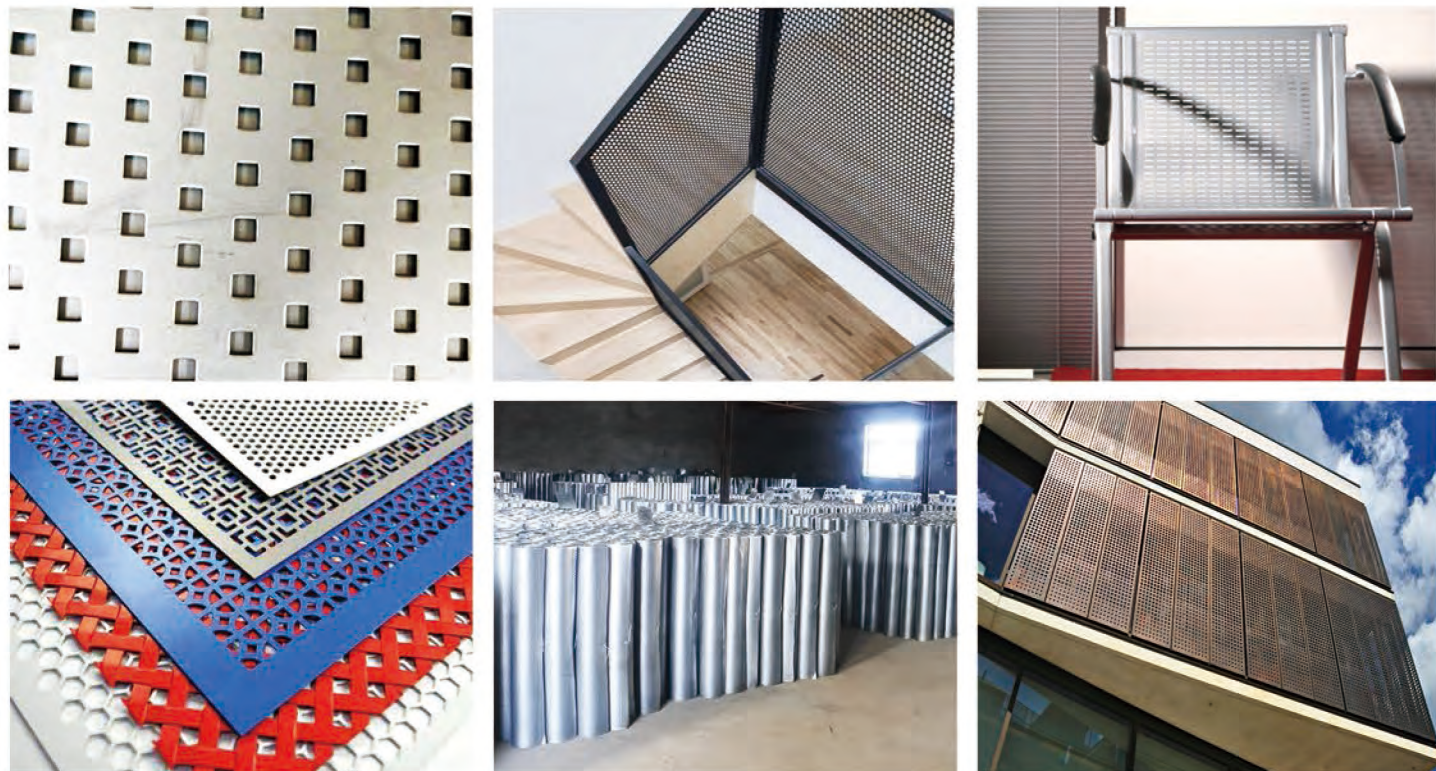
### PERFORATED METAL SHEET

Perforated Metals are sheets of steel, aluminum, stainless steel or specialty alloys that are punched with round, square or ornamental holes in a uniform pattern. Popular sheet thickness ranges from 26 gauge through 1/4" plate (thicker plates are available on special order). Common hole size range from 0.02" to 1" and greater.

Product selling point: strong bearing capacity, good stability, anti-skidding, good filtration, high temperature, resistant corrosion, anti rust, weldly application, corrosion resistance, anti rust.

Our advantage: performance stability Various specification High Quality steel plate Good mechanical properties, Deep drawing different sizes can be customized

MAIN PARAMETER	
Name	Perforated Mesh / Perforated Sheet / Punching Mesh / Decorative Mesh
Material	Aluminum Sheet, Steel Sheet, Galvanized Sheet, Carbon steel, Copper Nickel, Titanium etc.
Surface Finish	(1) For aluminum material Mill finish: Anodized finish (silver only) Powder coated (any color) PVDF (any color, smoother surface and longer life span) (2) For iron steel material Galvanized: Electric galvanized, Hot-dip galvanized Powder coated
Sheet size (m)	1x1m, 1x2m, 1.2x2.4m, 1.22x2.44m, etc
Thickness (mm)	0.3mm~10mm.
Hole shape	Round, square, diamond, hexagonal, star, flower, etc
Perforation way	Straight perforation, staggered perforation



### EXPANDED METAL SHEET

\* Material: Low carbon steel sheet, cold rolled sheet, aluminum sheet

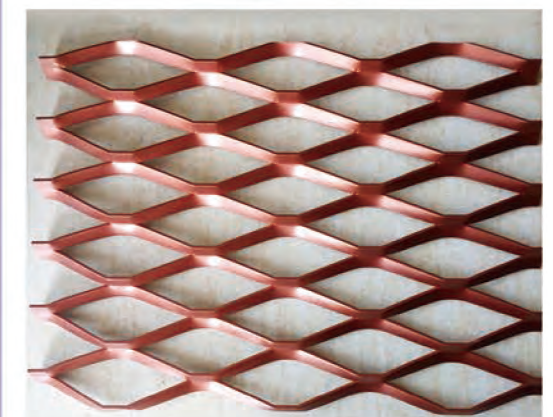
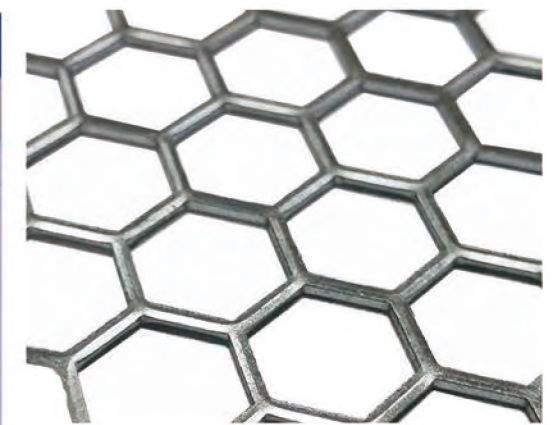
\* Processing mode: Deep stamping and drawing process

\* Classification:

- I. Electro / Hot dipped galvanized expanded mesh;
- II. Copper plated expanded mesh;
- III. PVC coated expanded mesh;
- IV. Aluminum expanded mesh.

\* Application: expanded metal used with concrete in buildings and construction, maintenance of equipment, making of arts and crafts, covering screen for first class sound case. Also fencing for super highway, studio, highway. Foot-board, machinery, petroleum production, stair case and aisle, also used in road, strengthening of bridges.

EXPANDED MESH				
Thickness (mm)	SWD (mm)	LWD (mm)	Stems Width (mm)	Width & Length
0.5	2.5	4.5	0.5	Width: 0.5m-2.0m Length: 30m, 50m  Other sizes can be made as request
0.5	10	25	0.5	
0.6	10	25	1	
0.8	10	25	1	
1	10	25	1.1	
1	15	40	1.5	
1.2	10	25	1.1	
1.2	15	40	1.5	
1.5	15	40	1.5	
1.5	23	60	2.6	
2	18	50	2.1	
2	22	60	2.6	
3	40	80	3.8	
4	50	100	4	
4	60	120	4	
4	80	180	4	
4	100	200	4	
4.5	50	100	5	
5	50	100	5	
5	75	150	5	
6	50	100	6	
8	50	100	8	







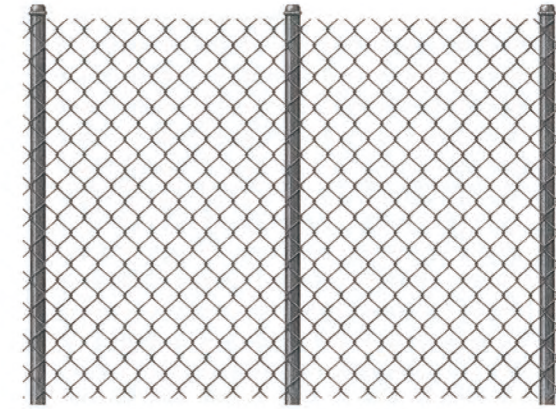
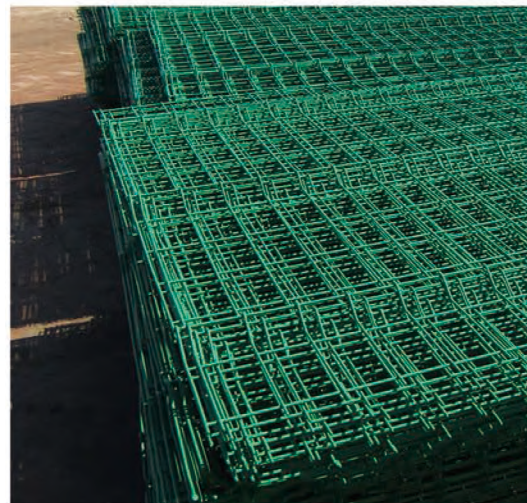
### WIRE MESH FENCE

\* Wire mesh fence is made of bend welded mesh panel, firm and anti-theft, good through visibility and also aesthetically pleasing.

\* Installation: Directly fill in the embedded installation on the wall or cement surface, and install the safety accessories through the flange. easy and quick installation, Elbow and barbed wire can be added to the fence, according to the safety protection requirements.

\* Application: Mainly used as fences in road, villas, airport, public place and scenic zone.

WIRE MESH FENCE DESCRIPTION		
Welded mesh panel	Hole Size	50mmx100mm, 50mmx200mm, 50mmx75mm
	Wire diameter	3.5mm - 5.0mm
	Panel size	1.8mx3m, three or four bends
Post	Post size	40mmx60mm, 50mmx50mm
	Wall thickness	1.0mm - 3.0mm
	Height	1.8m - 2.5m
	Distance	2m - 3m
Fence Colors	Dark green, grass green, red, white, black, blue and yellow etc.	
Customization accepted		



### CHAIN LINK FENCE

Chain link fence is made of high quality wire. chain link fence mesh uniform, flat surface, durable, beautiful appearance, easy to install.

PVC coated chain link Fence color variety, it has good decorative effect can be in harmony with the surrounding environment .

chain link Fence is widely used in highway, railway, stadium, slope protection, and other facilities can also be used to raise chickens, ducks, geese, rabbits and zoo enclosure.

CHAIN LINK FENCE		
Chain link mesh	Hole Size	40x40mm, 50x50mm, 55x55mm, 60x60mm, 70x70mm
	Wire diameter	1.5mm - 5.0mm
	Size per sheet	3000mm x 4000mm
Vertical Post	Pipe size	60mm, 75mm
	Wall thickness	1.5mm - 2.5mm
Horizontal Post	Post size	48mm, 60mm
	Wall thickness	1.5mm - 2.5mm
Connection	Regular fence accessories, clips	
Fence Colors	Dark green, grass green, red, white, black, blue and yellow etc.	
Customization accepted		



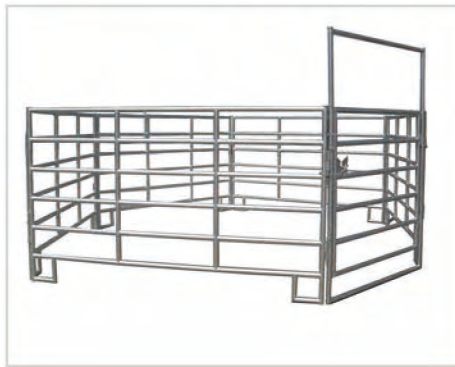




### CATTLE / LIVESTOCK FENCE

- \* Material: Low Carbon, High Carbon
- \* Classification:
  - I. Electro galvanized
  - II. Hot dipped galvanized
- \* Application: They are applicable to agriculture, herd residents to establish family farms in the establishment of the border, farmland circle bar, forest nursery, afforestation enclosure, tourist area and hunting area, construction site isolation and maintenance.

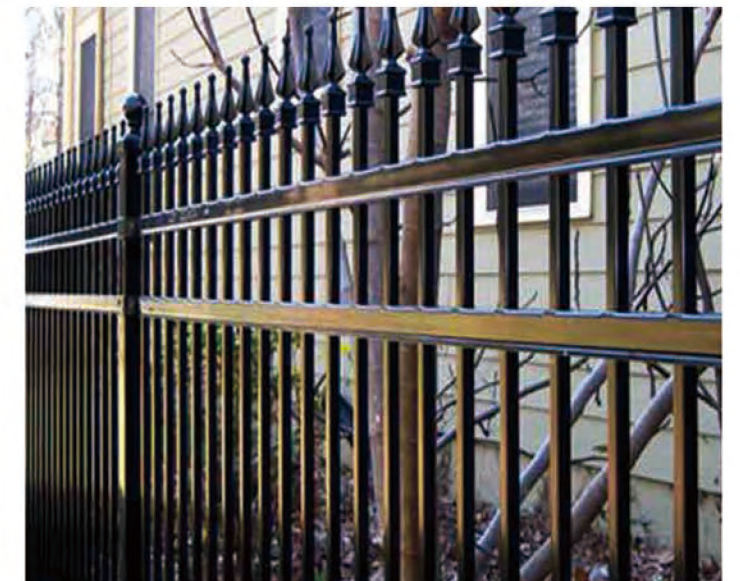
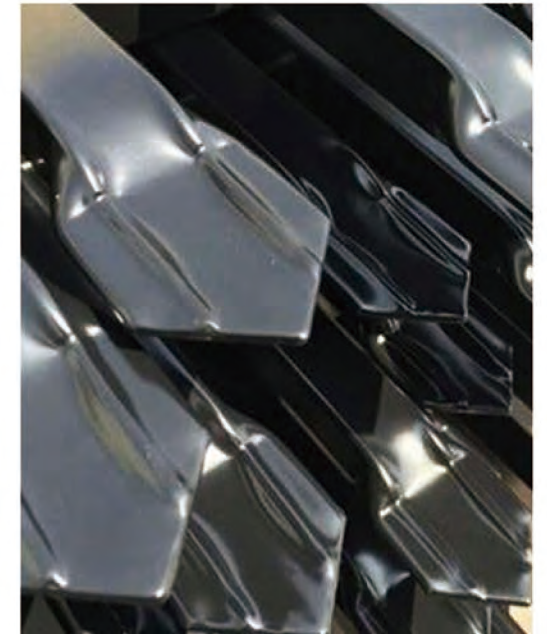
CATTLE FENCE			
Mesh sizes	G. W.(kg)	Wire Diameter(mm)	
7/150/813/50	102+114+127+140+152+178	19.3	2.0/2.5mm
8/150/813/50	89(75)+89+102+114+127+140+152	20.8	2.0/2.5mm
8/150/902/50	89+102+114+127+140+152+178	21.6	2.0/2.5mm
8/150/1016/50	102+114+127+140+152+178+203	22.6	2.0/2.5mm
8/150/1143/50	114+127+140+152+178+203+229	23.6	2.0/2.5mm
9/150/991/50	89(75)+89+102+114+127+140+152+178	23.9	2.0/2.5mm
7/150/1245/50	102+114+127+140+152+0178+203+229	26.0	2.0/2.5mm
10/150/1194/50	89(75)+89+102+114+127+140+152+178+203	27.3	2.0/2.5mm
10/150/1334/50	89+102+114+127+140+152+178+203+229	28.4	2.0/2.5mm
11/150/1422/50	89(75)+89+102+114+127+140+152+178+203+229	30.8	2.0/2.5mm



### WROUGHT IRON FENCE

- \* Process: machining-- chemical treatment (deoiling- dedust- nanometer TaoHua- passivation)-- Electrostatic spraying-- 220°C high temperature Enamel curing-- 20 years no rust.
- \* Application: Specially for residence community, Factory, road traffic, colleges and universities.
- \* Common sizes:
  - Mesh size: 40X19mm, 32X16mm, 45X25mm
  - Height: 1500mm
  - Length: 3000mm
  - Customization accepted.

WROUGHT IRON FENCE	
Material	Aluminum alloy pipe or galvanized steel pipe
Fence Style	Steel Fence, Aluminum Fence, Wrought Iron Fence,
Panel size(mm)	2400L x 2100H, 2100L x 1800H, 1800L x 1500H, etc.
Rail size (mm)	40 x 40mm, 40 x 30mm, etc.
Pickets size (mm)	25 x 25mm, 19 x 19mm, 16x16mm, etc.
Post size (mm)	60 x 60 mm, 50 x 50mm, etc.
Surface treatment	powder coated
Gates to Match	Manual sliding gates Remote controlled electric sliding gates Conventional swinging gates
Remarks	1, The color of fence can be customized . 2, We can produce fence by customer's drawings or samples.







### DOUBLE WIRE FENCE

Double wire fence system is a rigid yet unobtrusive mesh fencing system. It is often used as fence for industrial or commercial premises and sports pitches where a strong mesh fencing system required.

\* Material: Q195, steel wire

\* Surface treatment:

I. Black wire welded mesh + pvc coated;

II. Electro galvanized welded mesh + pvc coated;

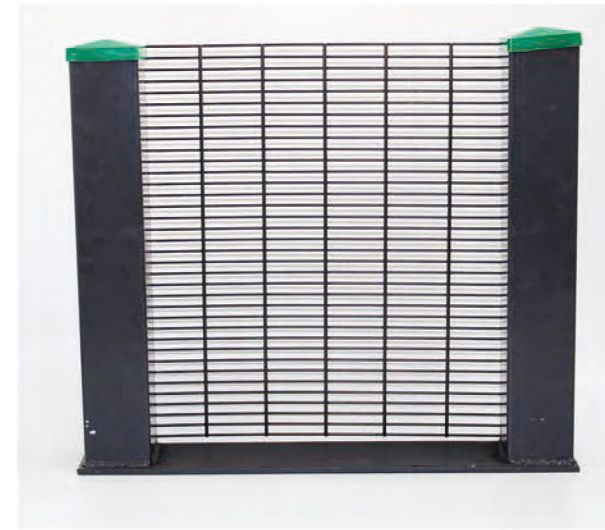
III. Hot dipped galvanized welded mesh + pvc coated.

(PVC coated colors: dark green, light green, blue, yellow, white, black, orange and red, etc.)

\* Application: It is used for fencing most industrial sites, sporting fields, multi-games area, protection of schools and nurseries, Corporate or college campuses, housing projects, healthcare or research facilities, Airports, parking facilities, commercial and industrial properties, pools, amusement parks, tennis courts, public parks and playgrounds, etc.

DOUBLE WIRE FENCE					
Panel size(mm)	Hole size(mm)	Wire Diameter(mm)			Post Height(mm)
630×2500	50×200	8×2+6	6×2+5	6×2+4	1100
830×2500	50×200	8×2+6	6×2+5	6×2+4	1300
1030×2500	50×200	8×2+6	6×2+5	6×2+4	1500
1230×2500	50×200	8×2+6	6×2+5	6×2+4	1700
1430×2500	50×200	8×2+6	6×2+5	6×2+4	1900
1630×2500	50×200	8×2+6	6×2+5	6×2+4	2100
1830×2500	50×200	8×2+6	6×2+5	6×2+4	2400
2030×2500	50×200	8×2+6	6×2+5	6×2+4	2600
2230×2500	50×200	8×2+6	6×2+5	6×2+4	2800
2430×2500	50×200	8×2+6	6×2+5	6×2+4	3000

Customization accepted



### 358 SECURITY FENCE

358 Security Fence, also called Anti climb fence, is the ultimate welded mesh system providing a high degree protection and discreet visual impact on the immediate environment.

\* Material: Mild Steel

\* Surface treatment:

I. Black wire welded mesh + pvc coated;

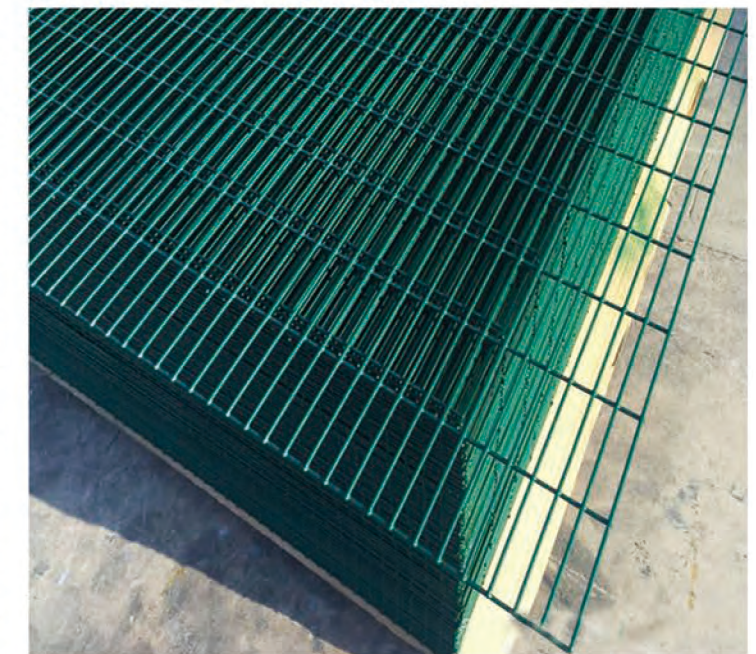
II. Electro galvanized welded mesh + pvc coated;

III. Hot dipped galvanized welded mesh + pvc coated.

(PVC coated colors: dark green, light green, blue, yellow, white, black, orange and red, etc.)

FENCE DESCRIPTION			
Panel height	2100mm	2400mm	3000mm
Fence height	2134mm	2438mm	2997mm
Panel width	2515mm	2515mm	2515mm
Hole size	12.7mm×76.2mm	12.7mm×76.2mm	12.7mm×76.2mm
Horizontal wire	4mm	4mm	4mm
Vertical wire	4mm	4mm	4mm
Panel weight	50kg	57kg	70kg
Post	60×60×2mm	60×60×2mm	80×80×3mm
Post length	2.8m	3.1m	3.1m
Flat bar	40×6m slotted	40×6m slotted	40×6m slotted
Fixings	8 gal bolt c/w permanent security nut		
No. of fixings	8	9	11

Customization accepted





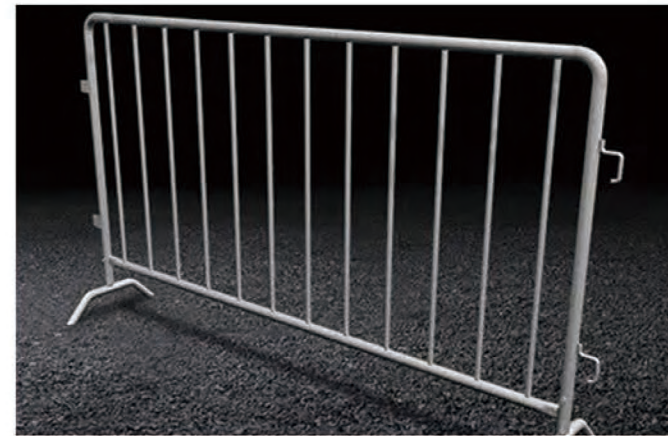


## TEMPORARY FENCE

Temporary fence is widely used all the world, and it is sold to Europe, Australia, New Zealand Asia and other areas; Also named Australia temporary fence, Germany temporary fence, Sweden temporary fence and Canada temporary fence; According to its feature, it is also named removable rails, easy fence, removable fence, portable fence, tenable fence, China temporary fence, universal temporary fence, plastic base fence and iron bar base fence. Australia temporary fence consists of these parts: the fence panel, the pipes, feet and clamps/clips.

\* Application: It can be reusable or rented; Used as temporary barrier, safety isolation, road leading and order maintaining for municipal, engineering construction, important gathering festival or sports events.

TEMPORARY FENCE		
Mesh Panel	Hole Size	50x50mm, 50x150mm, 60x150mm, 100x200mm
	Wire diameter	2.8mm-4.0mm
	Panel width	2.1m, 2.4m, 3.0m
Frame	Pipe size	Ø25mm-48mm, black pipe or galvanized pipe
	Wall thickness	1.2mm-2.5mm
	Whole height	1.8m, 2.1m
Accessories	Plastic base: The fully enclosed plastic base can be filled with sand cement; Hollow plastic base can be cast concrete cement in hollow part	
	Iron base: Rectangular base of plate base and tube products welding	
Connection	Regular fence accessories, clips	
Customization accepted		



## CROWD CONTROL BARRIER

Heavy duty crowd control / pedestrian barriers (portable fence, temporary fence or removable fence), it plays the role of protection in house site, major public events, concerts, festivals, gatherings, swimming pools and many other uses for secure construction sites and private property.

Specifications	Normal Size
Panel Size	914x2400mm, 1090x2000mm, 1090x2010mm, 940x2500mm
Frame	20mm, 25mm, 32mm, 40mm, 42mm, 48mm OD
Infill Picket	12mm, 14mm, 16mm, 20mm, OD
Spacing	100mm, 120mm, 190mm, 200mm
Finished	Hot-dipped galvanized or Powder coated after welded
Feet	Flat feet, Bridge feet and Tube feet





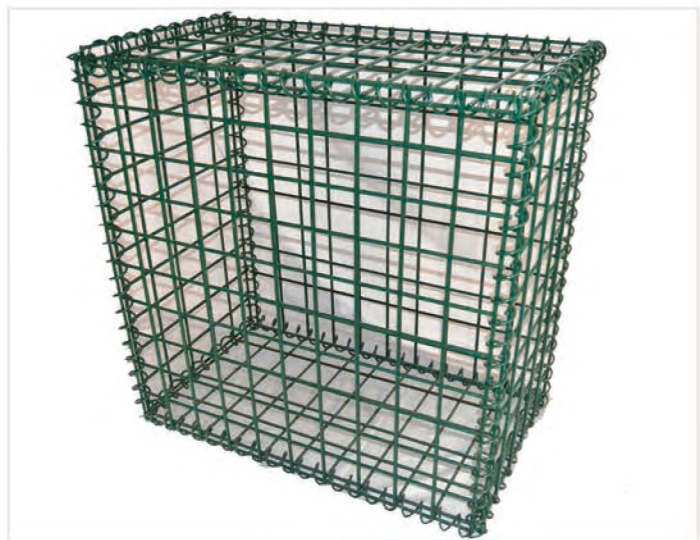
» WIRE MESH CONTAINER



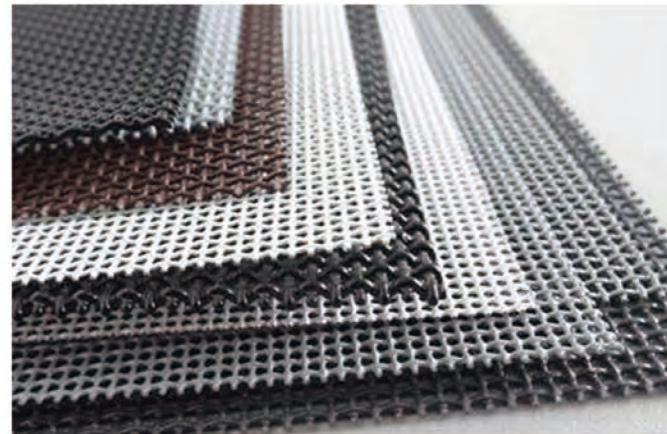
- \* Material: Q235, stainless steel
- \* Surface treatment: Galvanized
- \* Spacification:
  - (1)Size: 800mm\*600mm\*640mm, 1000mm\*800mm\*840mm, 1200mm\*1000mm\*890mm etc.
  - (2)Diameter of wire: 5.0mm, 6.0mm or 6.4mm etc.
  - (3)Size of mesh: 50mm\*50mm, 50mm\*100mm.
  - (4)Loading capacity: Varying from 500kg to 2000kg.
  - (5)Surface Treatment: Galvanization
  - (6)Customized sizes are available

WIRE MESH CONTAINER									
Model	Wire mm	Mesh mm	Sizes (mm)			Foot height	N.W.	Meas.	Load
			Length x Width x Height						
A-3 (stock)	6	50x50	800	600	640	100	29	0.22	800
A-5 (stock)	6	50x50	1000	800	840	100	45	0.52	1000
A-7 (stock)	6	50x50	1200	1000	890	100	60	0.84	1500
B-5	6.4	50x50	1000	800	840	100	53	0.52	1500
B-7	6.4	50x50	1200	1000	890	100	77	0.84	2000
B5-1/2	6.4	50x50	1000	800	500	100	38	0.26	1000
S-5	6.4	50x50	1000	800	840	100	44	0.52	1000
S-7	6.4	50x50	1200	1000	890	100	64	0.84	1000
S-9	6.4	50x50	1550	1120	1000	100	116	1.56	2500
C-2	4.8	50x50	800	500	540	100	22	0.15	500
C-5	4.8	50x50	1000	800	840	100	38	0.52	500
E-2	3	30x30	800	500	530	100	17	0.15	250

Other sizes can be made as request



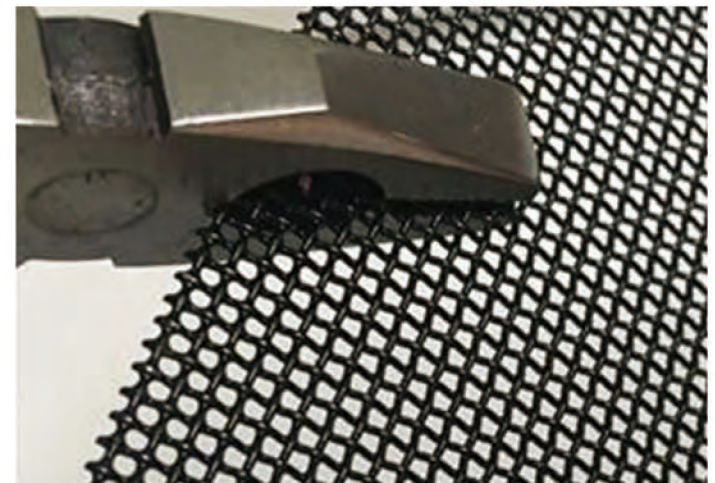
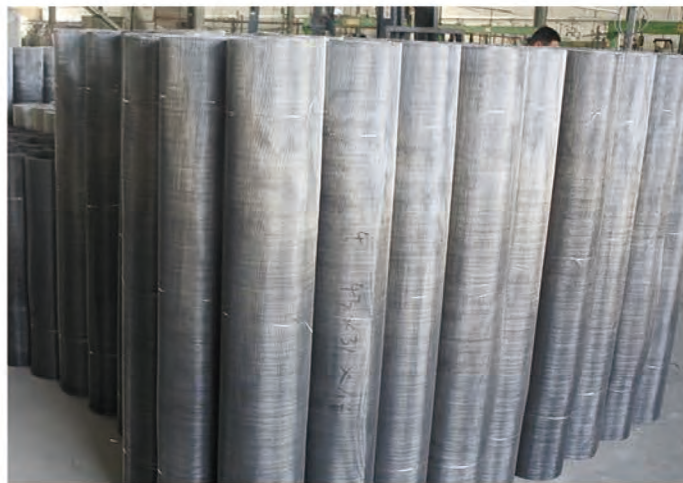
» SECURITY SCREEN MESH



Security screen mesh is designed to provide safe guard against thieves, storms and gunshot. This high-end product is mainly made of stainless steel 201, SS 304, SS 316, and its surface adopts electrostatic spraying process, which makes it possess higher anti-thief, anti-strike, bullet-proof, heat-resistant and other capabilities.

- \* Material: Stainless steel wire 304 316 304L 316L,
- \* Processing mode: plain weave & powder coating
- \* Advantages & Usage:
  - I. Nice surface, Ventilate, and easy to clean
  - II. Rustproof, fireproof and long-lasting
  - III. Anti-mosquito, against thieves and Against bullet

SECURITY SCREEN MESH		
Mesh Size	Wire Diameter (mm)	Width & Length
11 X 11mesh	0.80mm	0.75m x 2m; 0.75m x 2.4m;
12 X 12mesh	0.70mm	0.9m x 2m; 0.9m x 2.4m; 1.0m x 2.4m;
14 X 14mesh	0.60mm	1.2m x 2m; 1.2m x 2.4m;
14 X 14mesh	0.55mm	1.3m x 2.6m; 1.5m x 3m;
14 X 14mesh	0.50mm	Or as request





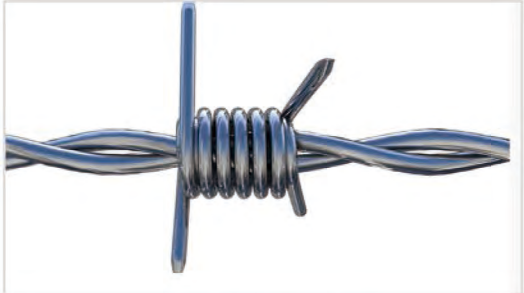
» **BARBED WIRE**



\* Material: Mild Steel  
 \* Classification:  
 I. Galvanized barbed wire  
 II. PVC barbed wire

**GALVANIZED BARBED WIRE**

Wire Diameter (BWG)	Length per KG			
	Barb distance (3 Inch)	Barb distance (4 Inch)	Barb distance (5 Inch)	Barb distance (6 Inch)
12 x 12	6.0617	6.7590	7.2700	7.6376
12 x 14	7.3335	7.9051	8.3015	8.5741
12.5 x 12.5	6.9223	7.7190	8.3022	8.7221
12.5 x 14	8.1096	8.8140	9.2242	9.5620
13 x 13	7.9808	8.8990	9.5721	10.0553
13 x 14	8.8448	9.6899	10.2923	10.7146
13.5 x 14	9.6079	10.6134	11.4705	11.8553
14 x 14	10.4569	11.6590	12.5423	13.1752
14.5 x 14.5	11.9875	13.3671	14.3781	15.1034
15 x 15	13.8927	15.4942	16.6666	17.5070
15.5 x 15.5	15.3491	17.1144	18.4060	19.3386



» **RAZOR BARBED WIRE**

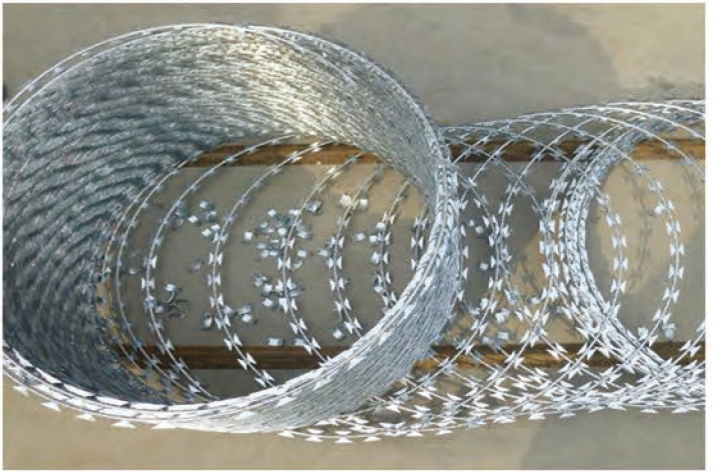
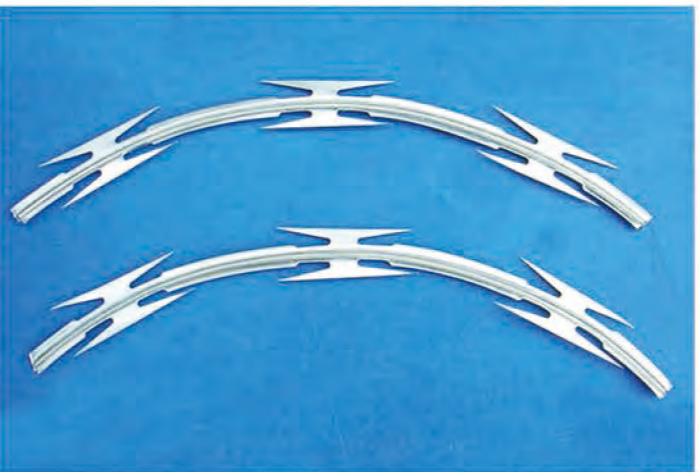


Razor wire is also named concertina coila or razoe barbed wire. It is a kind of modern security fencing materials with better protection and fencing strength made of hot-dipped galvanized sheets or stainless steel sheets. With beautiful and sharp blades and strong core wire, razor wire has the features of secure fencing, easy installation, age resistance and other properties.

Razor type barbed wire widele used in high-grade, residence district, warehouses, prisons and in militare fields and other sites requiring severe fencing and securitna coils, crossed type and flat type accoeding to the installation models.

**RAZOR BLADE TYPE AND SPECIFICATION**

Size	Shape	Thickness(mm)	Wire Dia(mm)	Blade Length(mm)	Blade Width(mm)	Blade Spacing(mm)
BTO-12		0.5 ± 0.05	2.5 ± 0.1	12 ± 1	15 ± 1	26 ± 1
BTO-15		0.5 ± 0.05	2.5 ± 0.1	15 ± 1	15 ± 1	33 ± 1
BTO-22		0.5 ± 0.05	2.5 ± 0.1	22 ± 1	15 ± 1	34 ± 1
BTO-30		0.5 ± 0.05	2.5 ± 0.1	30 ± 1	18 ± 1	45 ± 1
BTO-65		0.6 ± 0.05	2.5 ± 0.1	65 ± 2	21 ± 1	100 ± 2





### Black Iron Wire

Traits: Blank iron wire is more softer than normal, more flexibility and softness, color is consistent.  
Uses: Mainly used in construction, mining, chemical, welded wire mesh, welding hangers, reprocessing, etc. Annealed wire has become soft, flexibility increases, for building tie wire, binding reinforcement effect is better.



### Galvanized Wire

Galvanized wire is made of high quality low carbon steel as raw materials, there are electric galvanized and hot dipped galvanized, galvanized layer homogeneous solid, corrosion resistance anti-rust capability. Widely used in building tie wire, mesh, fence, wire stitching needle, sheathed cable, wire rope, etc. Packaging has a shaft wire and plate wire.

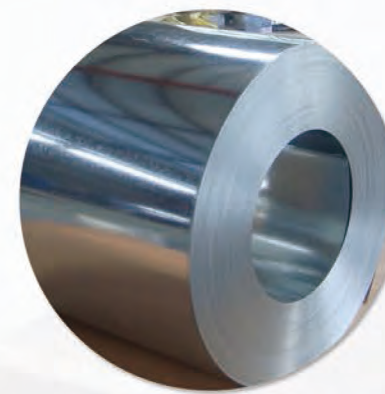


### PVC Coated Wire

Galvanized wire for the product selection of quality raw material, through deep processing to make plastic and galvanized iron wire firmly together, has anti-aging, corrosion resistance and anti-crack and other characteristics, service life is several times of hot and cold galvanized iron wire, the product variety and color, can be made according to customer's need.



## STEEL SHEET PRODUCTS



GALVANIZED STEEL  
COIL/ SHEET



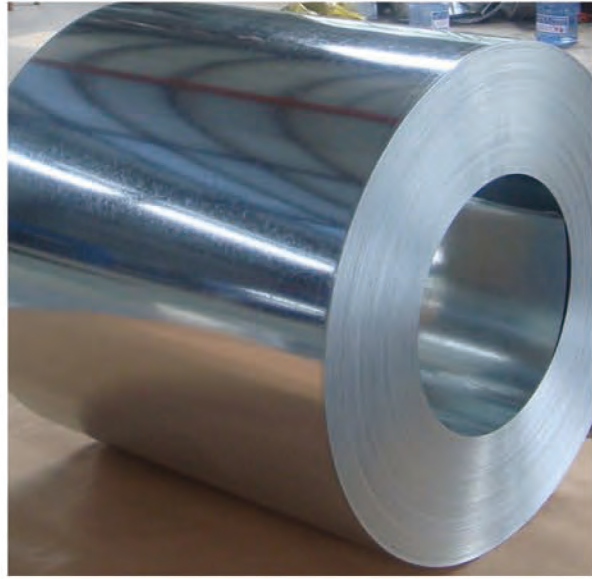
GALVANIZED  
SQUARE PIPE



CORRUGATED  
ROOFING SHEET

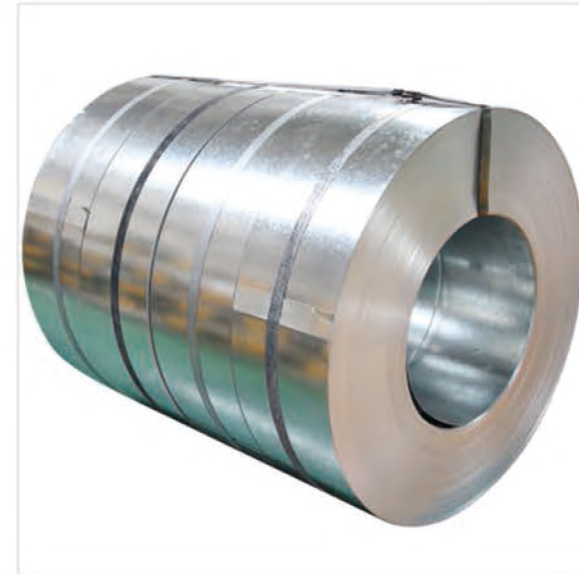


» STEEL SHEETS PRODUCTS



**GALVANIZED STEEL COIL / SHEET**

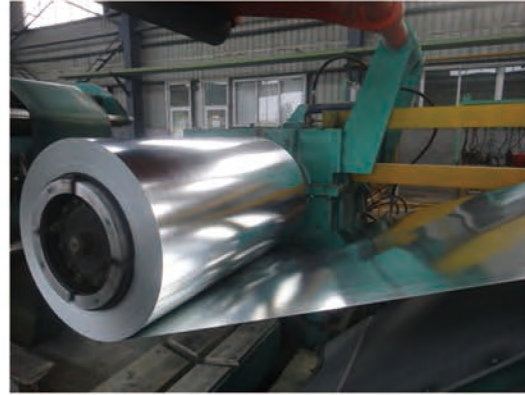
galvanized steel sheet is divided into hot-dip galvanized steel sheet and electro-galvanized steel sheet, which has good adhesion and weldability of the coating;  
The product has the advantages of good corrosion resistance, good ductility, decorative effect, precise slitting and good quality.



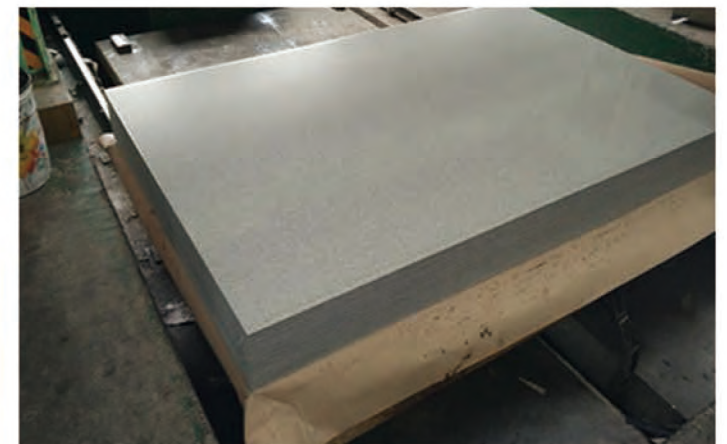
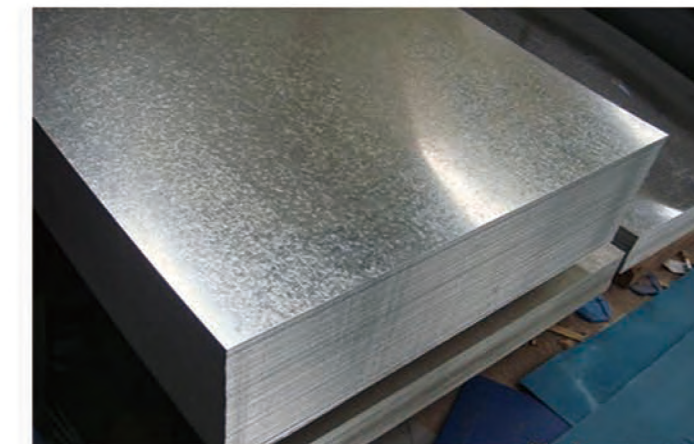
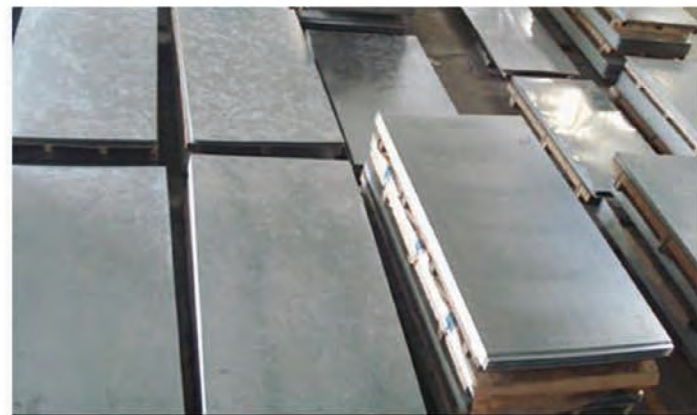
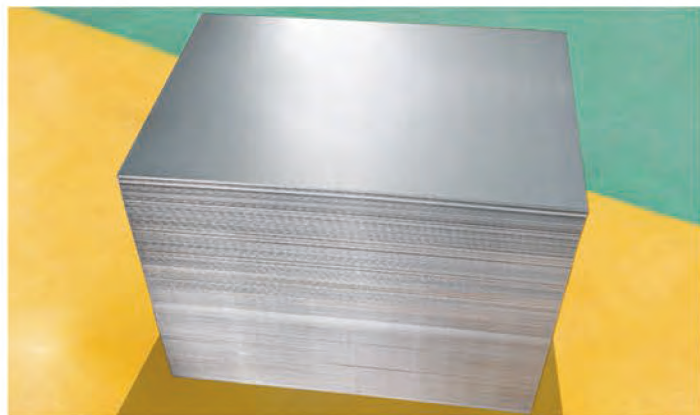
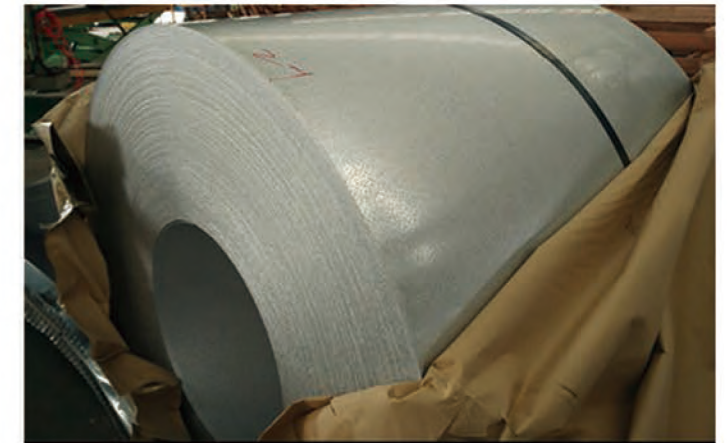
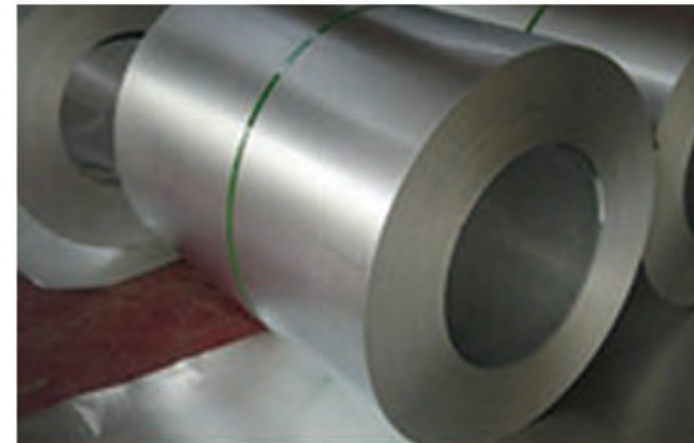
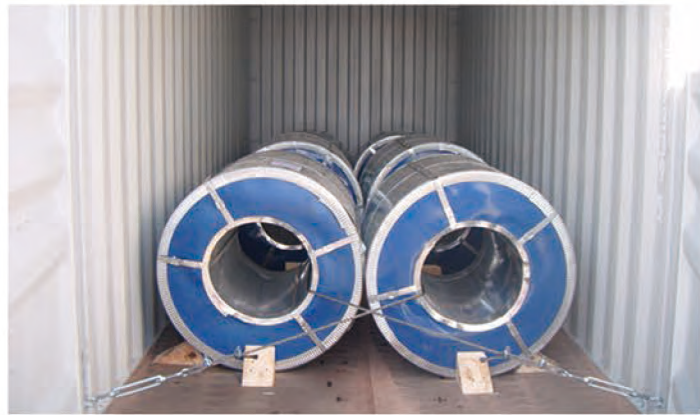
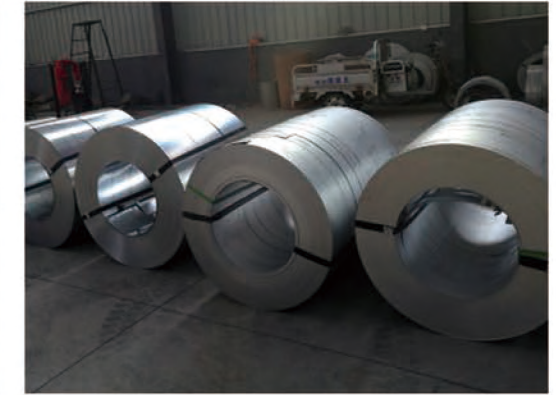
**GALVALUME STEEL COIL / SHEET**

galvanized steel sheet is divided into hot-dip galvanized steel sheet and electro-galvanized steel sheet, which has good adhesion and weldability of the coating;  
The product has the advantages of good corrosion resistance, good ductility, decorative effect, precise slitting and good quality.

HOT DIPPED GALV. STEEL COIL			
Surface treatment	Galvanized		
Standard	ASTM A653M, JIS G3302, GB/T2518-2008, EN10327		
Grade	CS, SGCC, 01, DX51D+Z		
Thickness	0.13-1.20mm	Width	600-1250mm
Zinc coating	60-275gsm	Coil ID	508/610mm
Surface treatment	Regular spangles, minimum spangles, zero spangles		
Application	Structural use, roofing, commercial use, household appliance, industry, family		



HOT DIPPED GALV. STEEL COIL			
Surface treatment	Galvanized		
Standard	ASTM A653M, JIS G3302, GB/T2518-2008, EN10327		
Grade	CS, SGCC, 01, DX51D+Z		
Thickness	0.13-1.20mm	Width	600-1250mm
Zinc coating	60-275gsm	Coil ID	508/610mm
Surface treatment	Regular spangles, minimum spangles, zero spangles		
Application	Structural use, roofing, commercial use, household appliance, industry, family		







### PPGI PPGL

The hot dip galvanized color steel plate is coated with an organic coating on the galvanized steel sheet, and is baked to form a tight combination of the coating and the galvanized layer. Color can be specified according to design, variety, beautiful and durable



### CORRUGATED ROOFING SHEET

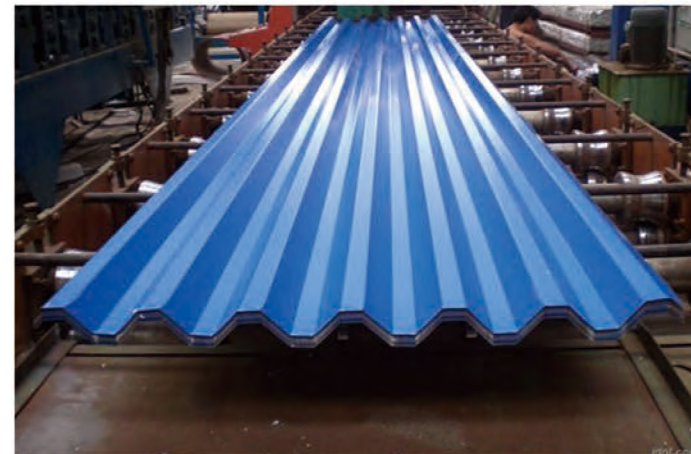
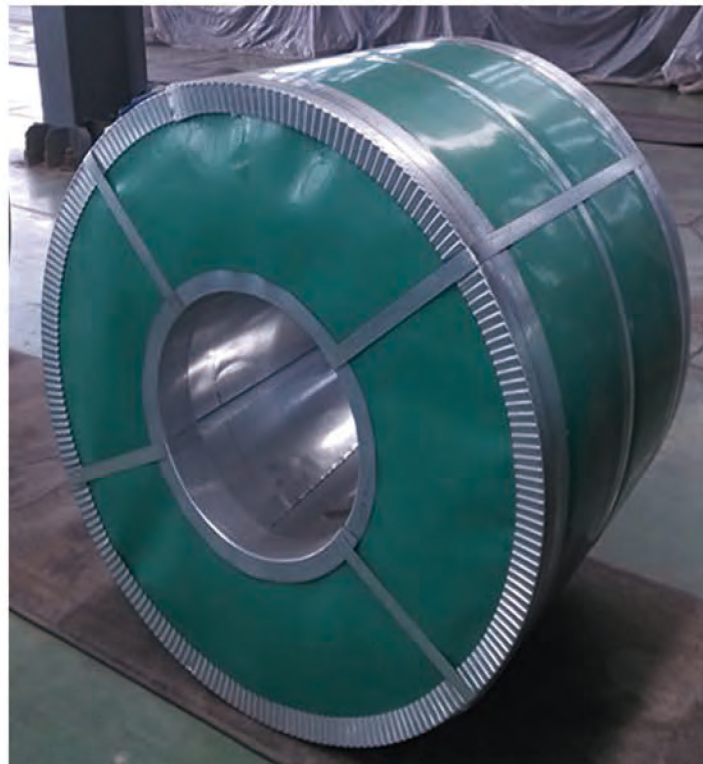
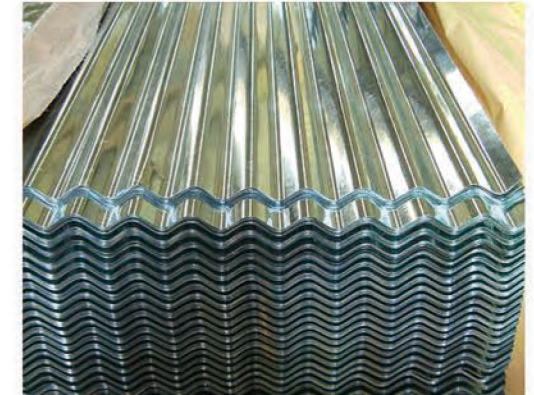
Corrugated roofing sheets are rolled and cold-formed into various wave-shaped profiles by metal sheets such as color-coated steel sheets and galvanized sheets. High strength, mostly used in architectural decoration.

Performance: good anti-corrosion performance, firm and reliable, beautiful appearance, easy installation, can prevent rainwater penetration and facilitate drainage, is a very economical building material.

PREPAINTED GALVANIZED STEEL COIL	
Standard	GB/T12754-2006
Steel substrate	CR, EG, HDG, ZAL
Thickness	0.15-1.20mm
Width	600-1250mm
Coil ID	508/610mm
Zinc coating	60-275gsm
Painting thickness	Top: 15-25um; back: ≥5um
Color options	Ral number or as requirement
Painting	PE, SMP, HDP, PVDF
Application	Structural use, roofing, commercial use, household appliance, industry, family



CORRUGATED ROOFING SHEET	
Corrugated roofing sheet	galvanized roofing sheet, prepainted roofing sheet
Thickness	0.11 - 1.5mm
Width after press	650 - 915mm
Hardness	85 - 90
Width after corrugation	915mm 910mm 905mm 900mm 880mm 875mm (1000mm original)
	815mm 810mm 790mm 780mm (914mm original)
	680mm 670mm 660mm 655mm 650mm (762mm original)







### GALVANIZED ROUND PIPE

**Material:** It is produced by steel strip and the main elements such as nickel, chromium and copper are of high purity and stability.

**Features:** good extension performance, strong welding, High precision.flaring, shrinking, bending, tapping within the standard range of processing.



### GALVANIZED SQUARE PIPE

**Material:** It is produced by steel strip and the main elements such as nickel, chromium and copper are of high purity and stability.

**Features:** good extension performance, strong welding, High precision.flaring, shrinking, bending, tapping within the standard range of processing.

GALVANIZED ROUND PIPE	
Steel Tube Type	Steel pipe in Construction Materials
Outside Dia(mm)	10.3-1219mm
Wall Thickness(mm)	1.5-30mm
Length	Random length:5-12m
Standard	ASTM A106-2006,API 5L,API 5CT,GB/T 8162-1999, GB/T 8163-1999, ASTM A53 GR.A /B BS 1387 CLASS A/B/C
Material	Q195-Q345,A53-A369,16Mn,10#-45#
Surface	Black painting, varnish paint, anti rust oil, hot galvanized, cold galvanized, 3PE,ect
Certificates	API5L ISO 9001:2008 TUV SGS BV etc
Packaging	Loose package, Packaged in bundles(3Ton Max) , bundled pipes with two slings at the both end for easy loading and discharging, End with Plastic caps or as per requirement
Application	<ol style="list-style-type: none"> <li>1. Fluid pipe</li> <li>2. Power Plant</li> <li>3. Structure pipe</li> <li>4. High and low pressure Boiler tube</li> <li>5. Seamless pipe /tube for petroleum cracking</li> <li>6. Conduit pipe</li> <li>7. Scaffolding pipe pharmaceutical andship,building etc.</li> </ol>



GALVANIZED SQUARE PIPE	
Product name	galvanized pipe
Technique	Longitudinal Electronic Resistance Welding(ERW) High Frequency Welding(HFW)
Steel Grade	Q195 similar to a283 GR.B, 040a10, ss330, sphc Q235 similar to a283 GR.D, 080a15,CS type B Q345 similar to a737 GR.B, SS400, S235JR
Wall thickness	0.8mm-2.5mm
Diameter	32mm-114mm
Length	5.8m-12m
Surface	Galvanized, 3PE, painting, coating oil, steel stamp, drilling, etc
Ends	Plain ends, cutting, threading, beveled, flange, etc
Packing	Packing in bundle with steel strips; with seaworthy package at the end; could be done with your requirement.
Inspection	With Chemical Composition and Mechanical Properties Testing; Hydrostatic Test, Dimensional and Visual Inspection, With Nondestructive Inspection

