



Co., Ltd. ALL rights reserved. Printed in China.



Pump Up Possibilities

2022

Our Client Are Our First Priority

Global Leading Supplier of
Sport and Leisure Products

- VERTICALLY INTEGRATED

completes a vertical chain from producing raw materials to end products. owns production lines of PVC film, silkscreen printing, high-frequency welding, sewing, and packing.

- WORLD WIDE VISION

products reach customers including global retailers in more than 50 countries in Europe, North America, Australia, and Asia, etc. With 6 subsidiaries worldwide, we are one of the major suppliers of plastic leisure products globally.

- CREATIVE IDEAS

R&D team innovates hundreds of new products every year with superior design, quality and environmentally-friendly compliance. Requirements of the global market and safety regulations are closely monitored. Various technical parameters of each new product have been tested and verified by the internal professional lab.



Over 30 Years Experience

is an export-oriented manufacturer of plastic leisure products with over 30 years of experience in R&D, high-quality manufacturing and worldwide sales. Sincerity, Practicality and Innovation has always been our business philosophy.

Manufacturing facilities are located within specially designated development zones which offer very favorable tax policies, utilities, new up to date infrastructure, and most importantly the major portion of our workforce originates in this zone, therefore lowering employee turnover, increasing a skilled retainable workforce.

100% of capacity both manufacturing and component sourcing, is located within 300km of the Shanghai region. In house mass production for PVC sheets, flocking, lamination, printing, welding, filter pumps, metal frames and accessories provides production cost control.

Our Product Series

GET INVOLVED ON JILONG OFFICIAL CHANNELS



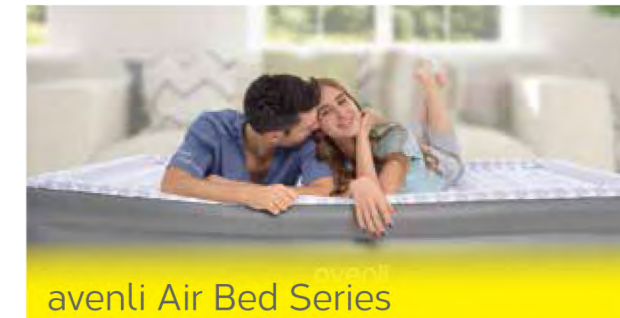
avenli Pool Series

Our 'Pool' product line offers an extensive range of both stand-alone pools, as well complete pool systems that meet everyone's needs and turn the summer into a great time for families and friends.



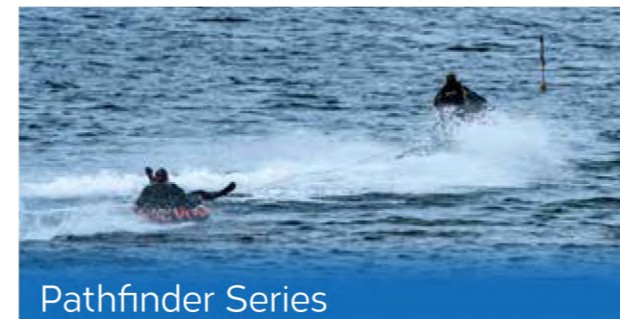
avenli SPA Series

The avenli product line offer a wide range of portable SPA and accessories to bring an new relaxing experience to consumers to enhance the well-being of both body and soul.



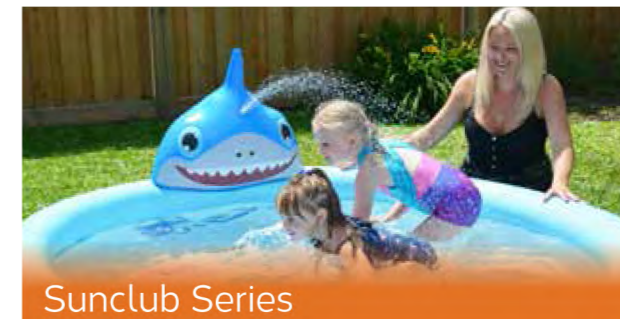
avenli Air Bed Series

Our 'Air Bed' product line offers a variety of comfortable, robust and easy-to-use inflatable beds, mattresses and resting chairs, created for indoor use to make guests feel at home, as well as outdoor use to enjoy on camping trips or picnics.



Pathfinder Series

Committed to provide diverse options of having fun from paddling and floating on the river, sliding on the snow, or playing esports at home.



Sunclub Series

Our 'Fun Gear' product line offers a wide range of inflatable toys kids love to play with, whether at home, garden, beach, pool or anywhere with sunshine.



Sparkle Shine Fashion Series

Sparkle Shine is dedicated to the most stunning you. Beauty should never follow the same pattern. Be yourself, not anyone else, and you are the most shinning one.

Safety & Quality

products comply with global safety & quality regulations and standards:



- REGULATION (EC) No 1907/2006 "concerning the Registration, Evaluation, Authorisation and Restriction of Chemicals (REACH)"
- DIRECTIVE 2011/65/EU "on the restriction of the use of certain hazardous substances in electrical and electronic equipment (ROHS)"
- DIRECTIVE 2012/19/EU "on waste electrical and electronic equipment (WEEE)"
- DIRECTIVE 2009/48/EC "the safety of toys directive"
- REGULATION (EU) 2016/425 "the personal protective equipment directive"
- DIRECTIVE 2013/53/EU "the recreational craft directive"
- CPSIA "Consumer Product Safety Improvement Act of 2008" (USA regulation of consumer and children's products)
- EN71 "Safety of toys" (European standard)
- ASTM F963 "Standard Consumer Safety Specification for Toy Safety" (USA standard)
- AS/NZS 8124 "Safety of toys" (Australian/New Zealand Standard)
- EN13138 "Buoyant aids for swimming instruction" (European standard)
- EN ISO 25649 "Floating leisure articles for use on and in the water" (European standard for airmat, lounge and similar products)
- ISO6185 "Inflatable boats" (international standard)
- DIRECTIVE 94/62/EC "On packaging and packaging waste"
- 2014/30/EU Electromagnetic Compatibility Directive
- 2014/35/EU Low Voltage Directive

- EN16582-1 Domestic swimming pools - Part 1: General requirements including safety and test methods
- EN16582-3 Domestic swimming pools - Part 3: Specific requirements including safety and test methods for above ground pools
- EN 16927 Mini pools - Specific requirements including safety and test methods for mini pools
- EN 16713-1 "Domestic swimming pools - Water systems - Part 1: Filtration systems - Requirements and test methods"
- EN 16713-2 "Domestic swimming pools - Water systems - Part 2: Circulation systems - Requirements and test methods"
- EN 16713-3 "Domestic swimming pools - Water systems - Part 3: Water treatment - Requirements"
- EN 17125 "Domestic spas/whirlpool spas/ hot tubs - Safety requirements and test methods"

	Category	Safety Norm
EU	Pool height < 40cm	EN71-8
	40cm ≤ Pool height < 85cm (not included filter pump)	EN16927
	Pool height > 40cm (included filter system)	EN16582
U.S.A	Pool height < 36 inch	ASTM F2666
	36inch ≤ Pool height ≤ 48 inch	ANSI/APSP/ICC-4
AU.	Consumer Goods (Portable Swimming Pools)	Safety Standard 2013

Quality Assurance



Top quality PVC plasticizer & PVC powder used in production



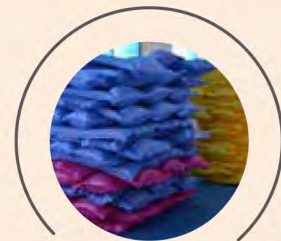
State-of-the-art internal lab and close cooperation with external lab to ensure quality of R&D



Tightly controlled production process



Durability Testing



24hr inflation test before packing & random inspection before shipment

After Sales Service



has established an online after-sales platform, customers can quickly solve problems through online FAQ:

Step 2
Select corresponding pages according to product categories

SPA - FAQ Pool - FAQ

Step 3
If FAQ is not helpful, switch to JLeisure After-sales Service Center

Quick Order Channel



has established an online order system (All the information on the system is intended solely for the person or entity to whom it is addressed. The disclosure, distribution or copying of any information is strictly forbidden) :

Step 1 Login website: www.jleisure.com

Step 2
Customer Registration

Step 3
login

Sales & Channel

We have over 30 years of experience in the inflatables industry to support our global partners.

We are constantly upgrading our packaging, sales promotion material, product manuals and other sales tools to service customers around the world, including big retail chains, internet sellers, distributors & independent shops.



Advertisement



Sponsorship



Exhibition



Social media

Toys

Sunclub™ for Kids

- Alpaca Series ----- P113
- Swim Kids Series ----- P114
- Ocean World Series ----- P114
- Inflatable Pets ----- P115
- Armbands, Beachball ----- P115
- Swim Ring ----- P116-117
- Baby Seats ----- P118
- Kids boat ----- P119
- Riders ----- P119-120
- Kids Pool ----- P121-122
- Family Pool ----- P122-124
- Rigid Wall Pool ----- P123
- Bathtub ----- P124
- Bop bag, Water Slide ----- P125
- Spray Play Pool ----- P126
- 3D animal pool ----- P127-128
- Spray play center ----- P129-130
- SKU sheet ----- P131-132

for Adults

- Classic Lounger & Mat ----- P134
- Swim Tube ----- P135-138
- Water Lounger ----- P139-140
- Fashion Mat, Cup holder ----- P141
- Giant Animal Float ----- P142-144
- Boat ----- P109-110

Accessories

P145-146

Marketing & Sales





37618
Alpaca Ring Age 3-5

- ±Ø50cm (20")
- 0.011cbm/36pcs/ctn



57167
Alpaca 3 Ring Pool Age 2-6

- ±Ø100cm x 30cm (Ø39" x 11.5") inflated
- Water Capacity(75%)39Gal(148L)
- 2 color assorted
- Repair patch
- 0.026cbm/12pcs/ctn



37617
Alpaca Arm Bands Age 6-12

- Conform to EN13138(for EU/AU market)
- ±30cm x 15cm(12" x 6")
- 2 color assorted
- 0.017cbm/36prs/ctn
- Not available for US market**



46091
Swim Arm Bands B Age 3-6

- Conform to EN13138(for EU/AU market)
- ±25cm x 15cm (10" x 6")
- 2 air chambers each
- Color box
- 0.033cbm/48prs/ctn
- Not available for US market**



37492
Baby Seat Age 0-1

- Conform to EN13138(For EU/AU market)
- ±73cm x 70cm (28.5" x 27.5")
- 0.21mm(8.4ga) vinyl
- Max load 11Kgs(24.2Lb)
- For added comfort with welded grommet
- Colors assorted
- Repair patch
- 0.021cbm/12pcs/ctn
- Not available for US market**

46088
Swim Vest Age 3-6

- Conform to EN13138(For EU/AU market)
- ±73cm x 70cm (28.5" x 27.5")
- 0.21mm(8.4ga) vinyl
- Max load 11Kgs(24.2Lb)
- For added comfort with welded grommet
- Colors assorted
- Repair patch
- 0.021cbm/12pcs/ctn
- Not available for US market**



37592
Ocean World Ring Age 4-8

- ±Ø60cm (24")
- 0.011cbm/36pcs/ctn



37591
Ocean World Kickboard Age 3-6

- ±74cm x 48cm (29" x 19")
- See-thru window
- 2 colors assorted
- 0.028cbm/72pcs/ctn



37492

46088



37591
Ocean World Kickboard Age 3-6

- ±74cm x 48cm (29" x 19")
- See-thru window
- 2 colors assorted
- 0.028cbm/72pcs/ctn



51145 (Sunclub brand only)
Inflatable Pets Bed



- ±85cm x60cm x20cm(33.5"x23.5"x7.9")
- 0.25mm(10ga)vinyl, 0.28mm(11.2ga) fabric laminated vinyl
- Pet bed for indoor use
- Repair patch,color box
- 0.030cbm/6pcs/ctn



51146 (Sunclub brand only)
Inflatable Pets Bed



- ±92cm x67cm x20cm(36"x26"x7.9")
- 0.25mm(10ga)vinyl, 0.28mm(11.2ga) fabric laminated vinyl
- Pet bed for indoor use
- Repair patch,color box
- 0.045cbm/6pcs/ctn



51147 (Sunclub brand only)
Inflatable Pets Float



- ±125cm x91cm x24cm(49"x35.5"x9.4") inflated
- 0.25mm(10ga)vinyl, 0.28mm(11.2ga) fabric laminated vinyl
- Max. Loading: 40kgs(88Lbs)
- Repair patch, color box
- 0.045cbm/6pcs/ctn



51142 (Sunclub brand only)
Pets Folding Pool



- ±Ø80cm x 20cm(Ø31"x7.8")
- Inside Wall/ Bottom: 0.33mm(13.2ga) fabric laminated vinyl
- Water Capacity(75%): 19Gal(75 L)
- Repair patch, Carry Bag Packing
- 0.041cbm/6pcs/ctn

51144 (Sunclub brand only)
Pets Folding Pool



- ±Ø120cmx 30cm(Ø47"x11.5")
- Inside Wall/ Bottom: 0.40mm(16ga) fabric laminated vinyl
- Water Capacity(75%): 50Gal(190L)
- Repair patch, Carry Bag Packing
- 0.056cbm/2pcs/ctn

32131
Whale Arm Bands Age 3-6

- Conform to EN13138(for EU/AU market)
- ±23cm x 22cm (9" X 8.7")
- 0.017cbm/36prs/ctn
- **Not available for US market**



32132
Dinosaur Arm Bands Age 3-6

- Conform to EN13138(for EU/AU market)
- ±23cm x 19cm (9" X 7.5")
- 0.017cbm/36prs/ctn
- **Not available for US market**

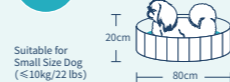


37464
Arm Bands Age 3-6

- Conform to EN13138(for EU/AU market)
- ±23cm x 15cm (9" x 6")
- 2 designs assorted
- 0.017cbm/36prs/ctn
- **Not available for US market**



M



L



37481
Arm Bands Age 3-6

- Conform to EN13138(for EU/AU market)
- ±23cm x 15cm (9" x 6")
- 2 designs assorted
- Color box
- 0.024cbm/24prs/ctn
- **Not available for US market**



47303
U-ion Swim Vest Age 2-6

- Conform to EN13138(for EU/AU Market)
- ±41cm (16")
- 2 air chambers for body vest
- 1 safety adjustable buckle
- 2 Color assorted
- 0.028cbm/24pcs/ctn
- **Not available for Russia/US market**



66001
Matte Panel Bal

- ±40cm (16")
- 0.018 cbm/ 72pcs/ ctn



018
orts B Age 2+

- ±40cm (16")
- Soccer, basketball, volleyball assorted
- 0.018cbm/72pcs/ctn



53012
Fashion Beach Ball Age 2+

- ±Ø50cm(Ø19.5")
- 3 designs assorted
- 0.012cbm/36pcs/ctn



53013
Ocean World Ball Age 2+

- ±Ø40cm (Ø16")
- 0.012cbm/36pcs/ctn



53014
Panda Beach Ball Age 2+

- ±Ø40cm (Ø16")
- 2 designs assorted
- 0.024cbm/72pcs/ctn



35010 Fashion Swim Ring

Age 3-5

- ±050cm (Ø20")
- 0014cbm/36pcs/ctn



35011 Fashion Swim Ring

Age 5-10

- ±060cm (Ø24")
- 0014cbm/36pcs/ctn



47224 Ocean Fun Swim Ring

Age 3-5

- ±50cm (20")
- Clear top with solid vinyl bottom
- 2 colors assorted
- 0011cbm/36pcs/ctn

37595 Animal Donut Ring

Age 4-8

- Panda±55cm x 65cm (21.5" x 25.5")
- Unicorn±55cm x 70cm (21.5" x 27.5")
- Panda & Shy Unicorn designs assorted
- 0018cbm/36pcs/ctn



35012 Fish Ring

Age 3-6

- ±79cm x 71cm (31" x 27.5")
- 2 color assorted
- 0018cbm/36pcs/ctn



35019 Swim Ring

Age 8+

- ±076cm (Ø30")
- 3 Color assorted
- 0020cbm/36pcs/ctn



37626 Swim Ring

Age 3-5

- ±050cm (Ø20")
- 2 color assorted
- 0011cbm/36pcs/ctn



37434 Unicorn Ring

Age 4-8

- ±055cm (Ø21.5")
- 018mm(72ga) vinyl
- Color box
- 0023cbm/24pcs/ctn



37405 Flamingo Ring

Age 4-8

- ±055cm (Ø21.5")
- 018mm(72ga) vinyl
- Sparkling wings
- C



A p a Ring

Age 4-8

- ±055cm (Ø21.5")
- 018mm(72ga) vinyl
- Color box
- 0023cbm/24pcs/ctn



32133 Sea Animal Baby Seat

Age 0.5-1.0

- ±068cm (Ø26.5")
- 020mm(8ga) vinyl
- 2 air chambers for added safety
- Max.Loading: 11kgs(24.2Lbs)
- 0029cbm/24pcs/ctn
- Not available for EU/AU market



37243 Baby Float

Age 0-3

- ±66cm x 66cm (26" x 26")
- 018mm(72ga) vinyl
- 2 air chambers for added safety
- Max.Loading: 11kgs(24.2Lbs)
- 0029cbm/24pcs/ctn
- Not available for EU/AU market



37615

Scooter Rider Age 3+

- ±91cm x 51cm (36" x 20")
- 020mm(8ga) vinyl
- 2 air chambers for added safety
- 2 Color assorted
- Repair patch
- 0.033cbm/24pcs/ctn



37621

Kids Boat Age 3-4

- ±86cm x 60.5cm (34" x 24")
- 020mm(8ga) vinyl
- 2 designs assorted
- Repair patch
- 0.034cbm/36pcs/ctn



35014

Seahorse Rider Age 3+

- ±119cm x 78cm (46.5" x 30.5")
- 022mm(8.8ga) vinyl
- 2 durable handles
- Repair patch, Color box
- 0.038cbm/12pcs/ctn



35001

Dinosaur Rider Age 3+

- ±119cm x 64cm (46.5" x 25")
- 022mm(8.8ga) vinyl
- 2 durable handles
- Repair patch, Color box
- 0.038cbm/12pcs/ctn



31225

Crocodile Rider Age 3+

- ±142cm x 68cm (56" x 26")
- 022mm(8.8ga) vinyl
- 2 air chambers
- 1 durable handles for easy grip
- Max.Loading:45kg(99Lbs)
- Repair patch, Color box
- 0.032cbm/12pcs/ctn



35036

Mosaic Flamingo Rider Age 3+

- ±110cm x 90cm(43" x 35")
- 025mm(10ga) premium vinyl
- 2 air chambers for added safety
- 2 durable handles
- Max.Loading: 45kgs(99Lbs)
- Repair patch, Color box
- 0.025cbm/6pcs/ctn



37528

Alpaca Float Age 3+

- ±110cm x 100cm x80cm (43" x 39" x 31") inflated
- 022mm(8.8ga) vinyl
- 3 air chambers for added safety
- 2 durable handles
- Max.Loading: 45kgs(99Lbs)
- Repair patch, Color box
- 0.030cbm/6p



376

Lobster Rider

- ±130cm x 51cm (51" x 20")
- 022mm(8.8ga) vinyl
- 2 durable handles for added safety
- 2 durable handles
- Max.Loading: 45kgs(99Lbs)
- Repair patch, Color box
- 0.030cbm/6pcs/ctn



37215

Transparent Whale Rider Age 3+

- ±145cm x 80cm (57" x 31")
- 022mm(8.8ga) vinyl
- 2 air chambers
- 2 durable handles
- Max.Loading:45kg(99Lbs)
- Repair patch, Color box
- 0.039cbm/12pcs/ctn



37219

Sea Lion Rider Age 3+

- ±117cm x 80cm (46" x 31")
- 022mm(8.8ga) vinyl
- 2 durable handles for easy grip
- Repair patch, Color box
- 0.023cbm/12pcs/ctn



Shark S

- ±100cm x 80cm (39" x 31")
- 022mm(8.8ga) vinyl
- 2 durable handles
- color assorted
- repair patch
- 0.023cbm/12pcs/ctn



35035

Sunclub Volley Ball Water Sports

- ±239cm x 74cm x 76cm (90" x 25" x 32") inflated
- ±17cm(6.8") Ball
- 0.18mm/0.20mm(7.2ga/8ga) vinyl
- Full set include 1 volleyball float, 1 ball,
- Repair patch,color box
- 0.042cbm/12pcs/ctn



35097

Rhino Rider

- ±123x49.5cm(48"x19")
- 022mm(8.8ga) vinyl
- 3 air chambers for added safety
- 2 durable handles
- Max.Weight: 45kgs(99Lbs)
- Repair patch, Color box
- 0.037cbm/12pcs/ctn



37611

Sea Turtle Float Age 6+

- ±140cm x 130cm (55" x 51")
- 024mm(9.6ga) vinyl
- 2 air chambers for added safety
- 2 durable handles
- Max.Loading: 100kgs(220Lbs)
- Repair patch, Color box
- 0.021cbm/6pcs/ctn



10303-1 Plain Pool Age 2-6

- ±0122cm x 25cm (Ø48" x 10") inflated
- 018/015mm(72/6ga)vinyl
- Water Capacity (75%)50Gal(190L)
- 2 color assorted (red,yellow)
- Repair patch
- 0034cbm/12pcs/ctn



10304-1 Plain Pool Age 2-6

- ±0157cm x 25cm (Ø62" x 10") inflated
- 020/018mm(8/72ga)vinyl
- Water Capacity (75%)80Gal(300L)
- 2 color assorted (red,yellow)
- Repair patch
- 0020cbm/6pcs/ctn



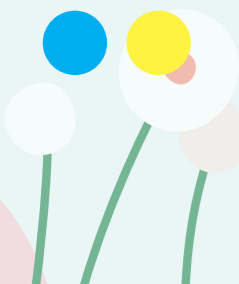
17218 Round baby Pool Age 2-6

- ±0100cm x 22cm (Ø39" x 8.5") inflated
- 018/019mm(72/76ga) vinyl
- Inflatable bottom offer more comfortable
- Water Capacity (75%) 25Gal (95L)
- Repair patch
- 0032cbm/12pcs/ctn



57157 Sea Animal 2 Ring Pool Age 1-3

- ±076cm x 20cm (Ø30" x 7.8") inflated
- Water Capacity(75%)12Gal(46L)
- 2 color assorted
- Repair patch
- 0044cbm/36pcs/ctn



57155 Rainbow Baby Pool Age 1-3

- ±095cm x 66cm (Ø37" x 26") inflated
- 018mm/022mm(72ga/8.8ga) vinyl
- Ideal for garden use
- With Canopy is suitable for kids
- Inflatable base for comfort
- Water Capacity(75%)10Gal(40L)
- Repair patch,color box
- 0027cbm/6pcs/ctn



51015 Bee Canopy Pool Age 1-3

- ±0120cm x 95 x 66cm (49" x 37" x 26") inflated
- 018mm/022mm(72ga/8.8ga) vinyl
- Ideal for garden use
- With Canopy is suitable for the kids
- Inflatable base for comfort
- Water Capacity(75%)9Gal(35L)
- Repair patch,color box
- 0028cbm/6pcs/ctn



- 10 Circ**
- ±076cm (Ø30")
 - 3 eq
 - Water Capacity (75%)12 Gal(46L)
 - 0044cbm/36pcs/ctn



51031 Ocean World 3-Ring Pool Age 2-6

- ±099cm x 23cm(Ø39" x 9") inflated
- 015mm/018mm(6ga/72ga) vinyl
- Water Capacity(75%) 23Gal(88.5L)
- Repair patch
- 0022cbm/12pcs/ctn



51003 Ocean World 3-Ring Pool Age 2-6

- ±0120cm x 24cm(Ø47" x 9.5") inflated
- 015mm/018mm(6ga/72ga) vinyl
- Ideal for garden use
- Deeper pool - Can also be used as a ball pit
- Water Capacity(75%) 43 Gal (162L)
- Repair patch
- 0034cbm/12pcs/ctn



Glitter Unicorn Ring Pool Age 2-6

- ±09cm x 19.5" (Ø3.5" x 19.5") inflated
- 015mm/018mm vinyl
- Shining Sequins included
- Water Capacity(75%)17Gal(65L)
- Repair patch
- 0038cbm/12pcs/ctn
- **Not available for AU market**



51017 Glitter Flamingo 2 Ring Pool Age 2-6

- ±099cm x 50cm (Ø39" x 19.5")
- Pool Height:17cm(6.5")
- 6ga/72ga(015mm/018mm) vinyl
- Shining Sequins included
- Water Capacity(75%) 17 Gal(65 L)
- Repair patch
- 0038cbm/12pcs/ctn
- **Not available for AU market**



10195 Neon Fashion P Age 2-6

- ±0150cm x 40cm (Ø60" x 15.7") inflated
- 020mm(8ga)vinyl
- 4 equal rings in neon color box /ctn
- Water Capacity (75%)10 Gal (37.8L)
- Repair patch
- 004cbm/6pcs/ctn



Mosaic Soft Side Pool Age 2-6

- ±0155cm x 32cm (Ø61" x 12.5") inflated
- 028mm/019mm(11.2ga/7.6ga) premium vinyl
- Eye catching mosaic design
- Ideal for garden use
- Deeper pool - Can also be used as a ball pit
- Water Capacity(75%)84Gal(320L)
- Repair patch,color box
- 0033cbm/6pcs/ctn



57161 Giant Hexagon Family Pool Age 6+

- Conform to EN16927
- ±223cm x 211cm x 58cm (87.5" x 83" x 22.5") inflated
- Wall Height: 45cm(17.5")
- 112ga/12ga(0.28mm/0.30mm) vinyl
- Water Capacity(65%)155Gal(590L)
- 3pcs seat with backrest in corner
- Repair patch,color box
- 0048cbm/2pcs/ctn



10118

Figure-8 Pool Age 6+

- Conform to EN16927
- ±175cm x 109cm x 46cm (69" x 43" x 18") inflated
- 0.28mm(11.2ga) vinyl
- Convenient drain plug allows easy emptying
- Water capacity (65%): 69Gal(260L)
- Repair patch. Color box
- 0.048cbm/4pcs/ctn



10628

Giant Rainbow Pool Age 6+

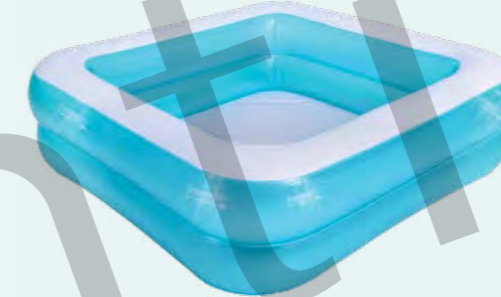
- Conform to EN16927
- ±Ø190cm x 50cm (Ø75" x 20") inflated
- 0.30mm(12ga) vinyl
- Convenient drain plug allows easy emptying
- Crystal clear wall and multi-colored I-Beams
- Water capacity (65%): 148gal. (560L)
- Repair patch. Color box
- 0.053cbm/3pcs/ctn



51005

Mosaic Square 2-Ring Pool Age 6+

- Conform to EN16927
- ±145cm x 145cm x 45cm
- (57" x 57" x 17.5") inflated
- 0.25mm(10ga) vinyl. 0.28mm(11.2ga) premium vinyl
- Eye catching mosaic design
- Ideal for garden use
- Deeper pool
- Can be used as a ball pit
- Water Capacity(65%)76Gal(287L)
- Repair patch,color box
- 0.048cbm/4pcs/ctn



51024

Little Whale Bab

- ±95cm x 62cm x 48cm (37" x 24" x 18.5") inflated
- 0.22mm(8.7ga) vinyl
- Convenient drain plug allows easy emptying
- "hot water warning" system for easy controlling the temperature
- Air pump 0.042cbm
- 0.042cbm
- 0.042cbm



51016

Sunshade Square Pool Age 2-6

- ±143cm x 143cm x 123cm (56" x 56" x 48") inflated
- Pool Height: 36cm(14")
- 0.21mm/0.26mm/0.31mm(8.4ga/10.4ga/12.4ga) vinyl
- Water Capacity(65%)63Gal(240L)
- Ideal for garden use
- Deeper pool - Can also be used as a ball pit
- Repair patch,color box
- 0.028cbm/2pcs/ctn

Age 2-6



57140

Rigid Wall Pool Age 2-6

- ±Ø120cm x 25cm (Ø47" x 10") inflated
- 0.40mm(16ga) vinyl
- Water capacity (80%): 59gal. (226L)
- Repair patch. Color box
- 0.043cbm/8pcs/ctn



57139

Rigid Wall Pool Age 2-6

- ±Ø150cm x 25cm (Ø59" x 10") inflated
- 0.40mm(16ga) vinyl
- Water capacity (80%): 92gal. (350L)
- Repair patch. Color box
- 0.035cbm/6pcs/ctn



17269

Figure-8 Pool Age 6+

- Conform to EN16927
- ±240cm x 140cm x 47cm (94.5" x 55" x 18.5") inflated
- 0.25mm(10ga) vinyl
- Convenient drain plug allows easy emptying
- 2-ring sturdy construction
- Water capacity(65%): 110Gal(420L)
- repair patch,color box
- 0.026cbm/2Pcs/ctn

Age 6+



10184

Giant Rectangular Pool Age 6+

- Conform to EN16927
- ±200cm x 150cm x 50cm (79" x 59" x 20") inflated
- 0.25mm/0.27mm(10ga/10.8ga) vinyl
- Water Capacity(65%)206Gal(780L)
- 0.039cbm/2pcs/ctn
- Convenient drain plug allows easy emptying
- Water capacity (65%): 116Gal. (440L)
- Repair patch. Color box
- 0.042cbm/12pcs/ctn



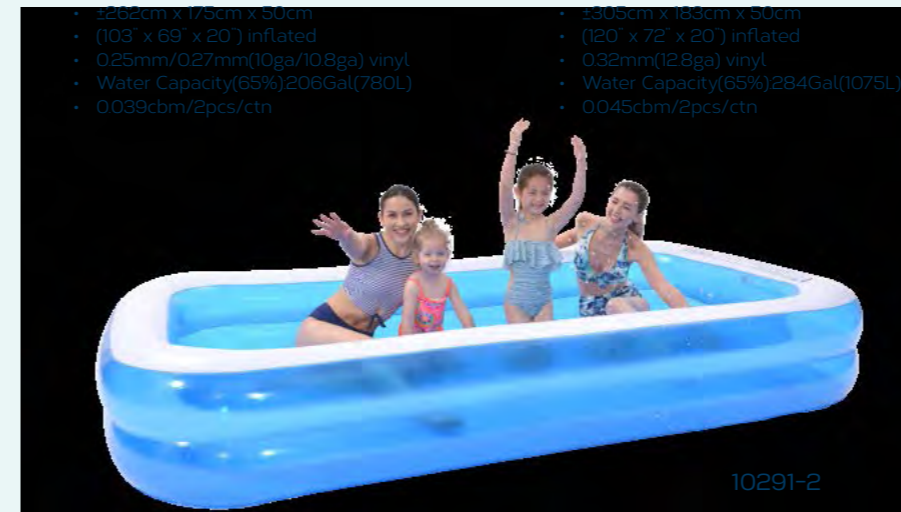
Giant Rectangular Pool Age 6+

- Conform to EN16927
- 2-ring sturdy construction
- Drainable vinyl
- Convenient drain plug allows easy emptying
- Repair patch. Color box

10291

Giant Rectangular Pool Age 6+

- ±262cm x 175cm x 50cm (103" x 69" x 20") inflated
- 0.25mm/0.27mm(10ga/10.8ga) vinyl
- Water Capacity(65%)206Gal(780L)
- 0.039cbm/2pcs/ctn



10291-1

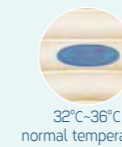
- ±200cm x 150cm x 50cm (79" x 59" x 20") inflated
- 0.25mm/0.27mm(10ga/10.8ga) vinyl
- Water Capacity(65%)116Gal(440L)
- 0.036cbm/3pcs/ctn

10291-2

- ±305cm x 183cm x 50cm (120" x 72" x 20") inflated
- 0.32mm(12.8ga) vinyl
- Water Capacity(65%)284Gal(1075L)
- 0.045cbm/2pcs/ctn

"Tiny Tots" Baby Bath Tub Age 0-12M

- ±91cm x 61cm x 29cm (36" x 24" x 11") inflated
- 0.23mm(9.2ga) vinyl
- Special protuberant design on the bottom to avoid sliding into the water
- "hot water warning" system for easy controlling the comfortable temperature
- Plastic pothook for easy drying after use
- Repair patch. Color box
- 0.042cbm/12pcs/ctn



32°C-36°C normal temperature

> 38°C hot water warning

avoid sliding



10291-2

53017

Boxing Bop Bag Age 3+

- ±035cm x 120cm (Ø13.5" x 47")
- 019mm(76ga) vinyl
- Water base for stability
- Repair Patch, Color Box
- 0037cbm/12pcs/ctn



53018

Animal Bop Bag Age 3+

- ±026cm x 82cm (Ø10" x 32")
- Sand base for stability
- Repair Patch, Color Box

Not available for EU/AU/US market



97205

Ice Breaker Water Slide Age 5-14

- ±500cm x 95cm (196" x 375")
- 72ga/6ga(018mm/015mm) vinyl
- Water sprayer link to garden hose
- Iceberg with built-in water base for spray fun
- Full set include: 1 water slide, 1 iceberg, 1 surfboard
- Repair patch, Color box
- 0054cbm/6set/ctn



51027

Elephant Spray Slide Age 5-14

- ±490cm x 126cm x 113cm (192"x49"x44")
- 015mm/018mm/020mm(6ga/72ga/8ga) vinyl
- Sprayer connect to garden hose
- Repair Patch, Color Box
- 0048cbm/6pcs/ctn



97261

Dinosaur Sprinkler Age 3+

- ±188cm x 125cm x 208cm (74" x 49" x 82") inflated
- 027mm(10.8ga) vinyl
- Sprayer connect to garden hose
- 3 water base for stability
- Repair patch, Color box
- 0035cbm/3pcs/ctn



51011

2-Ring Pool Set Age 1-3

- ±095cm x 20cm (Ø37.5" x 7.8") inflated
- 015mm/018mm(6ga/72ga) vinyl
- Water Capacity(75%)31Gal(120L)
- 25 pcs small balls included
- 2 colors assorted
- 0051cbm/4set/ctn



290001

Soft-Feel Air Filled Play Ball

- ±065cm (Ø2.55")
- Assorted Color for total



Kidney Trampoline Age 3+

- ±0153cm x 86cm (±060" x 33") inflated
- 022mm/030mm(8.8ga/12ga) vinyl
- Inflatable wall for added safety
- Max>Loading Weight:50Kgs(110Lbs)
- Repair Patch, Color Box
- 0034cbm/2pcs/ctn



51020

Rocket Slide Pool Age 3-6

- ±0181cm x 130cm x 10cm (71" x 51" x 3.9")
- Pool: ±0130cm x 96cm (51" x 37.8")
- 020mm(8.8ga) vinyl
- 25 pcs small balls included
- 2 colors assorted
- 0051cbm/4set/ctn



Bee Spray Pool

12010

Conform to EN16927

- ±Ø150cm x 41cm (Ø5' x 16.5')
- Water Capacity(80%): 121Gal(457L)
- PVC inflatable top ring
- Heavy gauge 3-layer laminated PVC wall
- Easy installation and convenient storage
- Repair patch,color box
- 0.053cbm/6pcs/ctn



3-ply Laminated Vinyl



Kids Frame Pool

- Easy installation
- Heavy gauge 3-layer side wall, heavy-duty PVC bottom
- Steel frame with plastic corner joint
- 2 color assorted (blue, green)
- Repair kit,Color box

17256

- 122m x 122m x 33cm (48" x 48" x 13")
- Water Capacity(90%): 105GAL(399L)
- 0.016cbm/1pcs/ctn
- 2 color assorted (blue, green)
- Total weight: 3.05 kg (6.71 lb)



3-ply Laminated Vinyl

3D Spray Pool

12150

Conform to EN16927

- ±Ø175cm x 62cm (Ø69" x 24.5")
- Water Capacity(80%): 302Gal(1143L)
- PVC inflatable top ring
- Heavy gauge 3-layer laminated PVC wall
- Easy installation and convenient storage
- Repair patch,color box
- 0.015cbm/1pc/ctn



3-ply Laminated Vinyl

Candy Spray Pool

12151

Conform to EN16927

- ±Ø150cm x 41cm (5' x 16.5')
- Water Capacity(80%): 121Gal(457L)
- PVC inflatable top ring
- Heavy gauge 3-layer laminated PVC wall
- Easy installation and convenient storage
- Repair patch,color box
- 0.051cbm/6pcs/ctn



3-ply Laminated Vinyl

Orange 3D Pool

17789

Conform to EN16927

- Ø15m x 41cm (Ø5' x 16.5")
- Water Capacity(80%): 121GAL(457L)
- PVC Infatable top ring
- Heavy gauge 3-layer laminated PVC wall
- Easy installation and convenient storage
- Repair Patch, Color box
- 0.046cbm/6pcs/ctn



3-ply Laminated Vinyl

Sea Otter Spray Pool

12011

Conform to EN16927

- ±Ø150cm x 41cm (Ø5' x 16.5')
- Water Capacity(80%): 121Gal(457L)
- PVC inflatable top ring
- Heavy gauge 3-layer laminated PVC wall
- Easy installation and convenient storage
- Repair patch,color box
- 0.053cbm/6pcs/ctn



3-ply Laminated Vinyl

Dinosaur 3D Spray Pool

17786

Conform to EN16927

- Ø1.75m x 62cm (Ø69" x 24.5")
- Water Capacity(80%): 302GAL(1143L)
- Lovely animal shape
- PVC Infatable top ring
- Heavy gauge 3-layer laminated PVC wall
- Easy installation and convenient storage
- Repair Patch, Color box
- 0.015cbm/1pcs/ctn



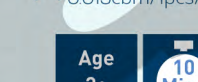
3-ply Laminated Vinyl

Elephant 3D Spray Pool

17821

Conform to EN16927

- Ø2.05m x 47cm (Ø6.75' x 18.5")
- Water Capacity(75%): 226GAL(855L)
- Lovely animal shape
- PVC Infatable top ring
- Heavy gauge 3-layer laminated PVC wall
- Easy installation and convenient storage
- Repair Patch, Color box
- 0.015cbm/1pcs/ctn



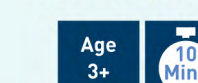
3-ply Laminated Vinyl

Shark 3D Spray Pool

17822

Conform to EN16927

- ±Ø1.9m x 47cm (±Ø6.2' x 18.5")
- Water Capacity(75%): 204GAL(770L)
- Lovely animal shape
- PVC Infatable top ring
- Heavy gauge 3-layer laminated PVC wall
- Easy installation and convenient storage
- Repair Patch, Color box
- 0.014cbm/1pcs/ctn



3-ply Laminated Vinyl

3D Ocean World Pool

17788 Conform to EN16927

- Ø2.05m x 47cm (Ø6.75' x 18.5")
- Water Capacity(75%): 226GAL(855L)
- PVC Infatable top ring
- Heavy gauge 3-layer laminated PVC wall
- Easy installation and convenient storage
- Repair Patch, Color box
- 0.014cbm/1pcs/ctn



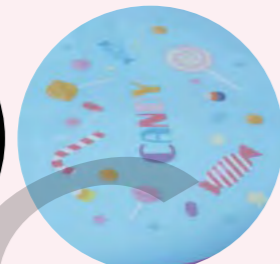
3-ply Laminated Vinyl

51001

Unicorn Spray Pool

Age 2-6

- ±195cm x 152cm x 76cm(76.5" x 59.5" x 29.5") inflated
- Pool Height±18cm(7")
- 0.20mm/0.25mm(7.2ga/10ga) vinyl
- Water Capacity(75%): 33Gal(125L)
- Sprayer connect to garden hose
- Multi-functions of unicorn sprayer and water slide
- Nice Candy design on the pool bottom
- Repair patch, Color box
- 0.031cbm/3pcs/ctn



97224

Slidding Play Pool

Age 2-6

- ±225cm x 124cm x 104cm (88.5" x 49" x 41") inflated
- 0.30mm/0.25mm/0.18mm(12ga/10ga/7.2ga) vinyl
- Water Capacity(75%): 39Gal(148L)
- giant pool for 2-5 children play
- Water sprayer link to garden hose
- Multi-functions of slide, spray water, toss ring and ball
- Full set include: base pool, slide, toss ring, pit ball
- Repair Patch, Color box
- 0.054cbm/4pcs/ctn



57173

Sea Animal Play Pool

Age 2-6

- ±200cm x 152cm x 40cm (78" x 59.5" x 15.5") inflated
- Pool Height±15cm(5.9inch)
- 0.18mm/0.24mm(7.2ga/9.6ga) vinyl
- Water Capacity(75%): 52Gal(198L)
- Sprayer connect to garden hose
- 1pc base pool, 1pc slide, 2 toss ring, 1pc ball, 1pc small to
- Repair patch, Color box
- 0.033cbm/3pcs/ctn

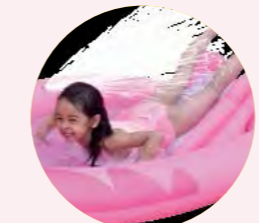


57172

Flamingo Play Pool

Age 2-6

- ±213cm x 123cm x 78cm (83" x 48" x 30") inflated
- Pool Height±15cm(6inch)
- 0.25mm(10ga) vinyl
- Water Capacity(75%): 29Gal(112L)
- Sprayer connect to garden hose
- 1pc base pool, 1pc slide, 5pcs balls
- Repair patch, Color box
- 0.036cbm/3pcs/ctn

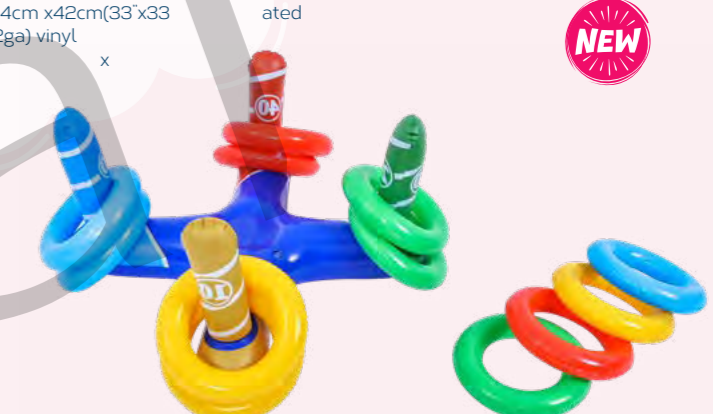


51149

Cross Ring Toss Game

Age 6+

- ±84cm x 84cm x 42cm(33" x 33" x 16.5") inflated
- 0.18mm(7.2ga) vinyl
- Repair patch, Color box
- 0.036cbm/3pcs/ctn

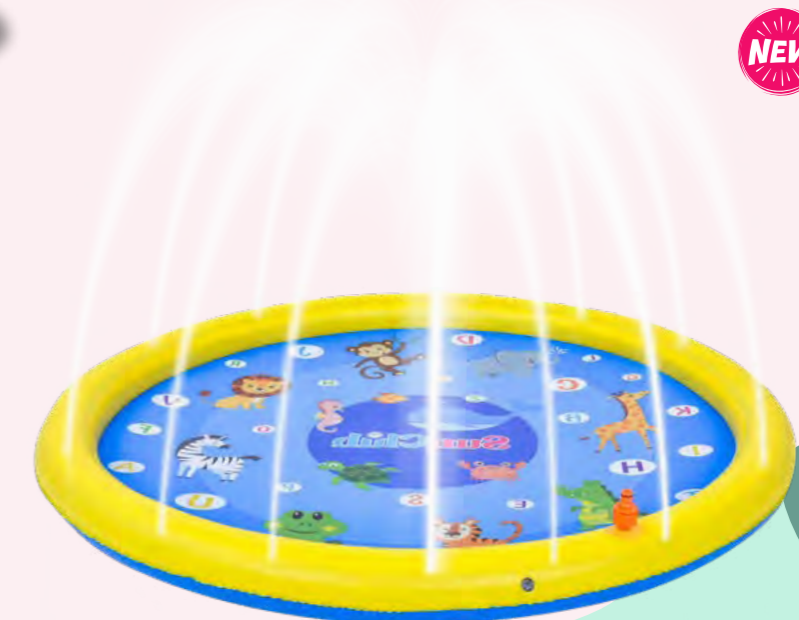


51148

Round Spray Play Pool

Age 2-6

- ±136cm x 10cm(Ø53.5" x 3.9") inflated
- 0.16mm/0.18mm(6.4ga/7.2ga) vinyl
- Water Capacity(75%): 21Gal(80 L)
- Sprayer connect to garden hose
- Repair patch, color box
- 0.041cbm/12pcs/ctn





Adults

37507
Wave Mat Age 14+

Conform to EN ISO 25649(for EU market)

- ±218cm x 183cm (85.5" x 72")
- 0.24mm(9.6ga) vinyl
- Max.Loading:160Kgs(352Lbs)
- 3 colors assorted
- Repair patch
- 0.057cbm/6pcs/ctn

Not available for US market

37490
Wave Mat Age 14+

Conform to EN ISO 25649(for EU market)

- ±218cm x 88cm (85.5" x 34.5")
- 0.22mm(8.8ga) vinyl
- Max.Loading:80Kgs(176Lbs)
- 3 colors assorted
- Repair patch
- 0.032cbm/12pcs/ctn

Not available for US market

33049
3-Person Float Age 14+

Conform to EN ISO 25649(for EU market)

- ±195cm x 188cm x 35cm (76.5"x74"x13.5")
- 0.20mm/0.28mm/0.32mm(8ga/11.2ga/12.8ga) vinyl
- 5 air chambers for added safety
- 3 durable handles
- Max.Loading: 240kg(528Lbs)
- Repair patch, Color box
- 0.036cbm/3 pcs/ctn

Not available for US market

37586

Gold Flamingo Water Lounger Age 14+

- Conform to EN ISO 25649(for EU market)
- ±0115cm (Ø45")
- 025mm(10ga) vinyl
- 2 air chambers for added safety
- 2 durable handles
- Max.Loading:80Kgs(176Lbs)
- Net base for added comfort
- Repair patch. Color box
- 0.023cbm/6pcs/ctn

Not available for US market



37587

Gold Swan Water Lounger Age 14+

- Conform to EN ISO 25649(for EU market)
- ±0115cm (Ø45")
- 025mm(10ga) vinyl
- 2 air chambers for added safety
- 2 durable handles
- Max.Loading:80Kgs(176Lbs)
- Net base for added comfort
- Repair patch. Color box
- 0.023cbm/6pcs/ctn

Not available for US market

35002

Glitter Rainbow Ring Age 12+

- ±106cm x 103cm (41" x 40")
- 020mm(8ga) vinyl
- Shining sequins included
- 0.020cbm/12pcs/ctn

Not available for AU market



Glitter

35033

Mosaic Flamingo Ring Age 12+

- ±0106cm (Ø41.5")
- 10ga(0.25mm) vinyl
- Repair patch, color box
- 0.023cbm/6pcs/ctn



37605

Mosaic Swim Tube Age 9+

- ±090cm (Ø35")
- 022mm(8.8ga) premium vinyl
- 3 colors assorted
- 0.028cbm/36pcs/ctn



Mosaic Emboss



37520

Mosaic Angel Wing Mat Age 14+

- Conform to EN ISO 25649(for EU market)
- ±20 cm x 200cm (79.5" x 78.5")
- m(10ga) premium vinyl
- air chambers for extra
- Max.Loading:80Kgs(17
- Repair patch, color b
- /6pcs/ctn

Not available for US market



41087

Tyre Swim Tube Age 9+

- ±090cm(Ø35")
- 0018cbm/24pcs/ctn



35013

Pirate Tube Age 12+

- ±0115cm (Ø45")
- 022mm(8.8ga) vinyl
- Repair patch,color box
- 0020cbm/12pcs/ctn



37600

Tyre Swim Tube Age 12+

- ±0115cm (Ø45")
- 022mm(8.8ga) vinyl
- 2 durable handles
- Repair patch,color box
- 0035cbm/12pcs/ctn



37598

Tropical Punch Swim Tube Age 12+

- ±0115cm (Ø45")
- 022mm(8.8ga) vinyl
- 2 durable handles
- Toucan & Flamingo designs assorted
- Repair patch,color box
- 0035cbm/12pcs/ctn



37601

Donut Jumbo Tube Age 12+

- ±0115cm (Ø45")
- 022mm(8.8ga) vinyl
- 2 Donut designs assorted
- Repair patch,color box
- 0020cbm/12pcs/ctn



35005

Mesh Water Lounger Age 14+

Conform to EN ISO 25649(for EU market)

- ±0106cm (Ø415")
 - 0.22mm(8.8ga) vinyl
 - 2 air chambers for added safety
 - Max.Loading:80kgs(176Lbs)
 - Net base for added comfort
 - 2 designs assorted
 - Repair patch, Color box
 - 0.030cbm/6pcs/ctn
- Not available for US market**



33050

Honolulu Mesh Lounger Age 14+

Conform to EN ISO 25649(for EU market)

- ±185cm x 100cm (72.5" x 39")
 - 0.22mm(8.8) vinyl
 - 2 air chambers for added safety
 - 2 colors assorted
 - Max.Loading:80kgs(176Lbs)
 - Mesh bottom
 - Repair patch
 - 0.034cbm/12pcs/ctn
- Not available for US market**



33051

Candy Mesh Lounger Age 14+

Conform to EN ISO 25649(for EU market)

- ±133cm x 105cm (52" x 41")
 - 0.22mm(8.8ga) vinyl
 - 2 air chambers for added safety
 - Max.Loading:100kgs(220Lbs)
 - Mesh bottom
 - Repair patch,color box
 - 0.020cbm/6pc
- Not available fo ket**



33052

Marshmallow Mesh Lounger Age 14+

Conform to EN ISO 25649(for EU market)

- ±136cm x 78cm (53" x 30.5")
 - 0.20mm(8ga) vinyl
 - 2 air chambers for added safety
 - Max.Loading:80kgs(176Lbs)
 - Mesh bottom
 - Repair patch,color box
 - 0.044cbm/24pcs/ctn
- Not available for US market**

006

Mosaic W nge

- o SO 25649(for
- m x 84cm (50" 33")
- 0.25mm(10g
- ir chamb dded safety

g 80kgs(176Lbs)

- Repair patch, Color box
 - 0.027cbm/12pcs/ctn
- Not available for US market**



32001 Age 14+

Strawberry Jumbo Mesh Lounger

- Conform to EN ISO 25649(for EU market)
 - ±167cm x 113cm (65.5" x 44")
 - 0.24mm(9.6ga) vinyl
 - 2 air chambers for extra safety
 - Max.Loading:80kgs(176Lbs)
 - Net base for added comfort
 - Repair patch,color box
 - 0.027cbm/6pcs/ctn
- Not available for US market**





37607
Summer

- ±183cm x 99cm (72" x 39")
- 0.24mm (12ga) vinyl
- 2 air chambers for added safety
- Max Loading: 80Kgs (220Lbs)
- Repair patch, color box
- 0.028cbm/12pcs/ctn

Not available for US market

37606
Rainbow Water Lounger Age 14+

- Conform to EN ISO25649(for EU market)
- ±148cm x 99cm (58" x 39")
- 0.24mm (9.6ga) vinyl
- Max Loading: 80Kgs (176Lbs)
- 2pc cup holders
- 2 air chambers for added safety
- Repair patch, color box
- 0.027cbm/12pcs/ctn

Not available for US market



97250
Animal Cup Holder Age 3+

- Flamingo: ±20cm x 15.5cm x 22cm (7.8" x 6" x 8.6")
- Duck: ±24cm x 15.5cm x 16cm (9.4" x 6" x 6.2")
- Unicorn: ±25cm x 15.5cm x 19cm (9.8" x 6" x 7.4")
- 3 designs assorted
- 0.018cbm/72pcs/ctn



97260
Fruit Cup Holder Age 3+

- Pineapple: ±25cm x 17cm x 6cm (9.8" x 6.7" x 2.4")
- Watermelon/Lemon: ±17cm x 6cm
- 0.016cbm/72pcs/ctn



33063
Giant Pineapple Age 14+ market

- Conform to EN ISO 25
- ±185cm x 85cm (72.5" x 33.5")
- 0.24mm (9.6ga) vinyl
- 3 air chambers for added safety
- 2 durable handles
- Max Loading: 100kgs (220Lbs)
- Repair patch, Color box
- 0.044cbm/4pcs/ctn

US market



37608
Alpaca Giant Float Age 6+

- ±188cm x 115cm x 100cm (74" x 45" x 39")
- 0.30mm (12ga) vinyl
- 3 air chambers for added safety
- 2 durable handles
- Max Loading: 100kgs (220Lbs)
- Repair patch, Color box
- 0.044cbm/4pcs/ctn



33055

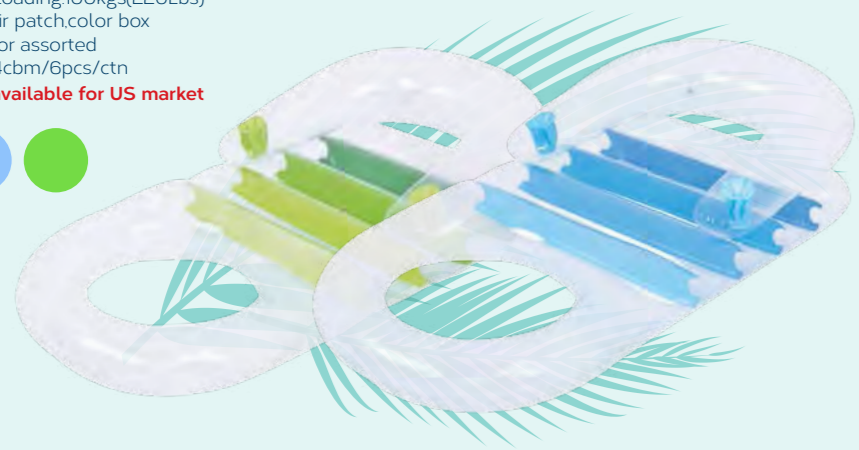
Water Lounger

Age 14+

Conform to EN ISO 25649(for EU market)

- ±150cm x 86cm (59" x 33.5")
- 0.23mm(9.2ga) vinyl
- Max.Loading:100kgs(220Lbs)
- Repair patch,color box
- 2 color assorted
- 0.024cbm/6pcs/ctn

Not available for US market



33061

Mosaic Duo Water Lounger

Age 14+

Conform to EN ISO 25649(for EU market)

- ±188cm x 117cm (74" x 46")
- 0.28mm(11.2ga) premium vinyl
- 3 air chambers for added safety
- 2 durable handles
- Max.Loading: 160kgs(352Lbs)
- Repair patch,color box
- 0.032cbm/6pcs/ctn

Not available for US market



Mosaic Emboss



33057

Folding Water Lounger

Age 14+

Conform to EN ISO 25649(for EU market)

- ±198cm x 84cm (78" x 33")
- 0.23mm(9.2ga) vinyl
- Max.Loading:100Kgs(220Lbs)
- 3 air chambers for added safety
- 2 in 1 function as water lounger or armchair
- Repair patch,color box
- 0.035cbm/6pcs/ctn

Not available for US market



33066

Water Lounger

Age 14+

Conform to EN ISO 25649(for EU market)

- ±170cm x 85cm (66.5" x 33.5")
- 0.24mm(9.6ga) vinyl
- 2 air chambers for added safety
- Max.Loading:100Kgs(220Lbs)
- Repair patch,color box
- 0.030cbm/6p

Not available for US market



27131

18 Pockets Fashion Mat

Age 14+

Conform to EN ISO 25649(for EU market)

- ±190cm x 70cm (74.5" x 27.5")
- 0.24mm(9.6ga) vinyl
- Max.Loading:80Kgs(176Lbs)
- 2 air chambers for added safety
- Colorful coil beam construction
- 3 color assorted
- Repair patch,color box
- 0.028cbm/12pcs/ctn

Not available for US market



37496

Economy Air

Age 12+

- ±183cm x 69cm
- Contoured pillow
- 3 colors assorted
- 0.036cbm/24pcs/ctn

Not available for US market

3749

E

- Conform to EN ISO 25649
- ±183cm
- 0.18m

Mat

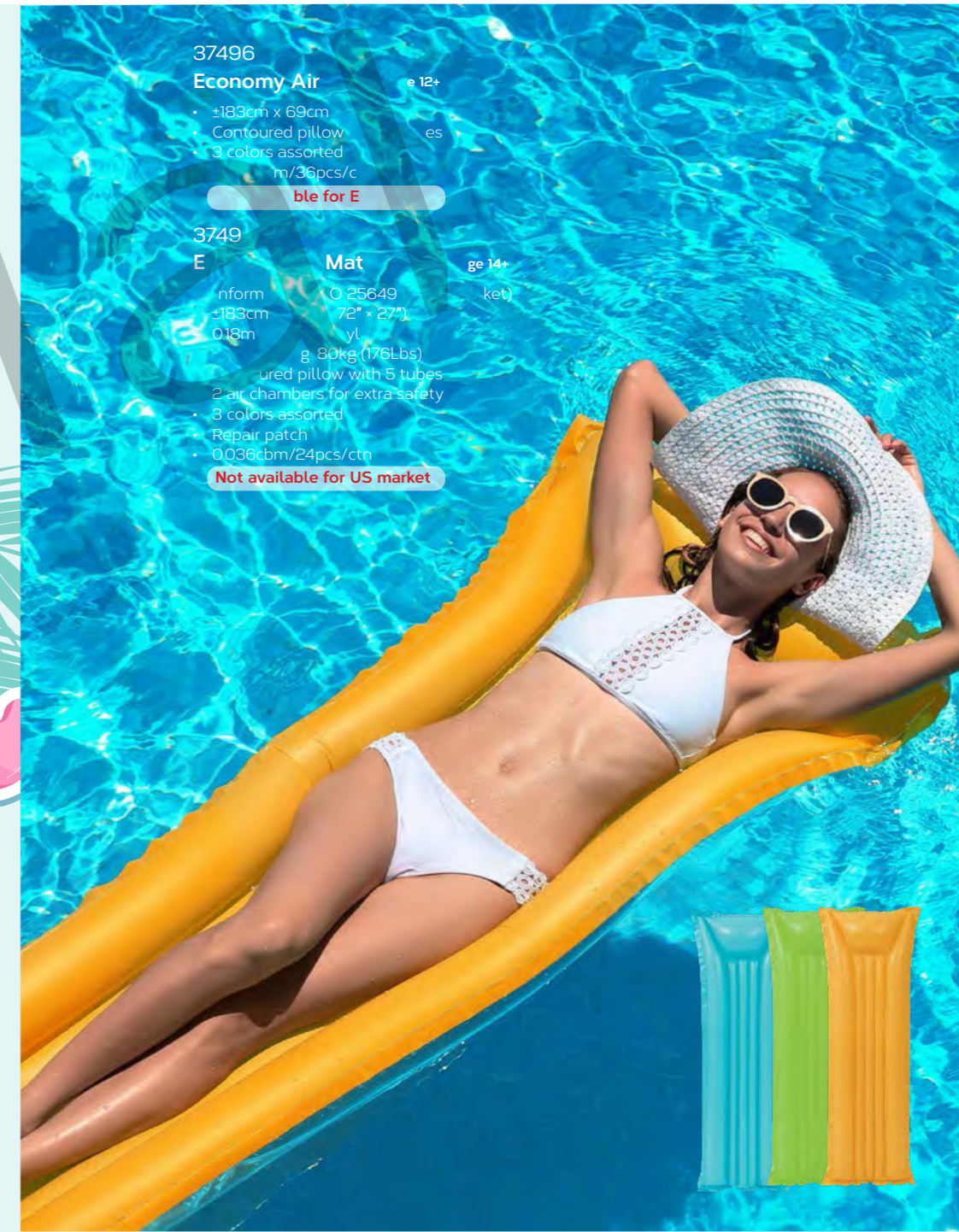
- 0.25649
- 72" x 27"
- Vinyl

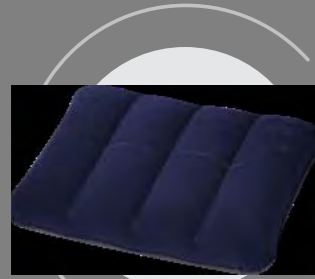
Age 14+

(Weight)

- Weight: 80kg (176Lbs)
- Contoured pillow with 5 tubes
- 2 air chambers for extra safety
- 3 colors assorted
- Repair patch
- 0.036cbm/24pcs/ctn

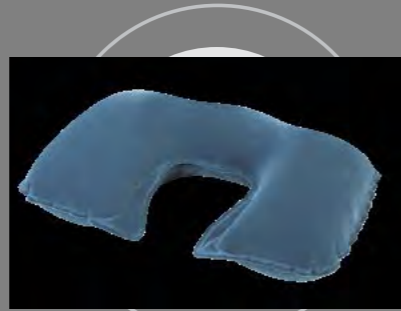
Not available for US market





I-BEAM INFLATABLE PILLOW

- # 137002
- - 53cmx37cm(21"x14.5")
- - 8 ga. (0.20mm) vinyl
- - 16ga.(0.40mm) flocked vinyl top
- - Color Box
- - 0.033cbm/48pcs/ctn



TRAVEL AIR PILLOW

- # 137007
- - 45cmx28cm(18"x11")
- - 8 ga. (0.20mm) vinyl
- - 16ga. (0.40mm) flocked
- - Color Box
- - 0.048cbm/72pcs/ctn



AC ELECTRIC AIR PUMP

- Multi-plug available
- 3 nozzles to fit major standard valves
- Pressure: 4000pa
- Color box. 0.022cbm/12pcs/ctn

29P308EU



- AC220V-240V (Euro. Standard)
- Conform to RoHS Directive



DC Electric Air Pump

- Simply to be powered by car lighter
- Quickly deflate and inflate
- 3 nozzles to fit major standard valves
- Color box. 0.022cbm/12pcs/ctn

29P309



- DC 12V
- Pressure: 3500pa - 4500pa
- Conform to ROHS Directive



Foot Pump

- Just press by foot to inflate or deflate
- 2 nozzles to fit major standard valves
- Polybag with header card

29P206

- Size: 175cm (7")
- Air volume: 900cc
- 0.052cbm/12pcs/ctn

29P202-1

- Size: 11cm (4.5")
- Air volume: 500cc
- 0.075cbm/48pcs/ctn



Inflation Hand Pump

- Pump on Fore and Back Strokes
- Accordion hose with 2 nozzles

29P386

- Size: 30cm (11.8")
- Air volume: 2x700cc
- Color box
- 0.046cbm/12pcs/ctn

29P390

- Size: 9.7cm x 36cm (3.8" x 14")
- Air volume: 2x1200cc
- Color box
- 0.053cbm/8pcs/ctn



Electrical Pump

- nozzle
- Pressure: 10000pa
- E Approved

29P



- AC 220-240V(Euro Standard)
- Conform to ROHS Directive



Battery Air Pump

- Convenient for indoor and outdoor use
- Powered by 4 x D Size dry/primary battery
- Quickly deflate and inflate
- 3 nozzles to fit major standard valves
- Color box
- 0.025cbm/12pcs/ctn

29P384



- Battery not included
- Conform to ROHS Directive



Bellows Foot Pump

- Just press by foot to inflate or deflate
- 3 nozzles to fit major standard valves
- Shrink wrapped w/insert card

29P389

- Size: 19cm x 16cm (7.5" x 6.3")
- Air volume: 2000cc
- 0.031cbm/12pcs/ctn

29P391

- Size: 26.5cm x 18.3cm (10" x 7.3")
- Air volume: 3000cc
- 0.042cbm/12pcs/ctn



Double Heavy Duty Pump

- Inflate and Deflate

29

- Size: 4.95" x 1.77" (12.7cm x 4.5cm)
- Air volume: 500cc
- Color box
- 0.069cbm/12pcs/ctn

0713 Air Patches

- Size: 4.6sq in(30cm²) x 10Pcs
- PVC material
- Blister Card
- 0.012cbm/36pcs/ctn

290139 Repair Kit

- 0.18 oz(5g) x 1pc glue tube
- 21.6sq in(140cm²)PVC swatch
- Blister Card
- 0.0112cbm/36pcs/ctn

Not available for EU market



Hand Pump

- Pump on Fore and Back Strokes

29P385

- Air volume: 2
- 29cm x 5cm (11")
- Polybag with header card
- 0.052cbm/48pcs/ctn



AC ELECTRIC AIR PUMP

- Convenient for Indoor and Outdoor use
- Powered by AC socket or Car Lighter
- Quickly inflate and deflate
- 3 nozzles to fit major standard valves
- Max. Air pressure: 2500Pa
- Color box. 0.025cbm/12pcs/ctn

29P364EU



- AC220-240V or DC 12V(Euro. Standard)
- Conform to ROHS Directive



3-Way Electric Air Pump

- Convenient for Indoor and Outdoor use
- Powered by AC Socket or Car Lighter Or direct use by 8 X AA- cell Batteries
- Quickly deflate and inflate
- 3 nozzles to fit major standard valves
- Pressure: 2400pa
- Color Box: 0.052cbm/24pcs/ctn

29P312



- DC 12V (Battery)

29P312-1



- DC 12V (Battery + Cigar Lighter)

29P312-2EU



- DC 12V(Battery + Cigar Lighter + AC 230V Euro. Standard)
- Conform to ROHS Directive
- (Battery not included)



#29P312 #29P312-1 #29P312-2EU