



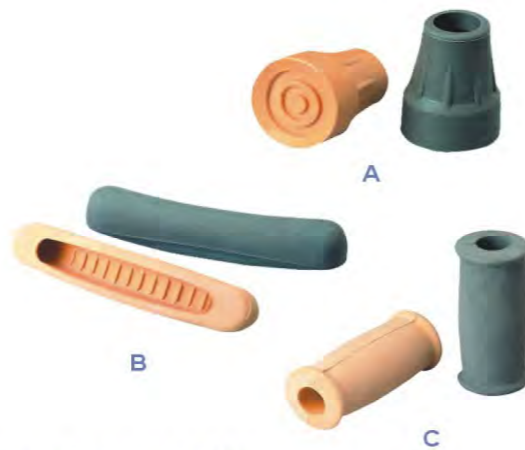
**AC925 PUSHBUTTON CRUTCHES**

- Adjustable sticker indication
- Quick adjustment to widely range Patients' height
- Superior quality lightweight anodized Aluminum
- AC925L(L) Tall Adult 135~155cm
- AC925L(M) Medium 115~135cm
- AC925L(S) Small 95~115cm
- AC925L Kids 75~95cm



**AC935 STANDARD CRUTCHES**

- Superior quality lightweight anodized Aluminum
- Non-slip rubber tips with good traction
- Bolts coated with adhesive to prevent wing nuts spinning off
- Built-in metal ring prevents excessive wear and ensures maximum durability
- AC935L(L) Tall Adult 132~152cm
- AC935L(M) Medium 112~132cm
- AC935L(S) Small 92~112cm



**CRUTCHES PARTS**

- Colors available in Yellow and Grey
- Material available in Rubber, EVA or TPR
- Comfort and durable



**AC935 WOOD CRUTCHES**

- Imported high quality wood
- Non-slip rubber tips for good traction
- Elegant outlook provided by matched color parts
- AC 935(L) Tall Adult 128~148cm
- AC935(M) Medium 113~133cm
- AC935(S) Small 98~118cm



**AC933L/923L/9331L AMERICAN-STYLE FOREARM CRUTCHES**

- AC933LMetal Arm cuff with foam handgrip
- AC923LPlastic arm cuff and plastic handle
- AC9331Lwith mould plastic arm cuff and handle
- 2-section adjustable for widely height's range
- Light weight and Durable Aluminum material
- High-quality Rubber tip against slide



**AC937L EUROPEAN STYLE FOREARM CRUTCHES  
AC937LF FOLDABLE FOREARM CRUTCHES**

- One-piece mould plastic cuff and handgrip
- Reflection piece for safety purpose
- Easy fit and quick height adjustable
- Colors available in black, blue, grey, green and pink



**AC938/938L/9381L OFFSET CANE**

- Attractive finishing resist marring and scratching
- Durable and slip-against rubber tips
- Secured with ring locker
- Height adjustable from 780~1000mm
- AC928L Black
- AC938L Bronze
- AC9381LChrome



**AC9282/3/4L STANDARD CANE**

- Attractive finishing resist marring and scratching
- Durable and slip-against rubber tips
- Secured with ring locker
- Height adjustable from 780~1000mm
- AC9282L Black
- AC9283L Bronze
- AC9284L Chrome
- AC9282L PVC handle





**AC944/9441 LARGE QUAD CANE**

**AC 932L/9421L QUAD CANE  
AC 9261/9262 TRIPOD CANE**

- Attractive finishing resist marring and scratching
- Durable and slid-resistance rubber tips
- Secured with ring locker
- Colors available in Black, Bronze, Sliver, and other fashion colors

**AC9311-4 SMALL QUAD CANE**

- Attractive finishing resist marring and scratching
- Durable and slid-resistance rubber tips
- Secured with ring locker
- AC9311 Black,
- AC9312 Bronze,
- AC9313 Sliver,
- AC9314 Fashionable colors



**AC910 WOOD CANE**

**AC967L/933L/9321L PYRAMID CANE**

- Noble and elegant outlook
- Non-slide and durable rubber tip
- 22 or 25cm Diameter version available
- Back or bronze ones are available
- Height: 93cm

- Sturdy Lightweight Aluminum tubing for extreme stability
- Step comfortable Foam handgrip
- Function as a standard cane, with extra support and flexibility
- Foldable design for easy transport and storage





AC927-1L AC927L AC927-2L



AC9201L AC920L

**AC9201L/920L T-SHAPE CANE**

- Strong, super hard and heat treat Aluminum construction
- Height adjustable: 680~900mm
- Telescoping tube attached with pushbutton
- Colors available in Black, Bronze, and Chrome

**AC927-1L/927L/927-2L FOLDABLE CANE**

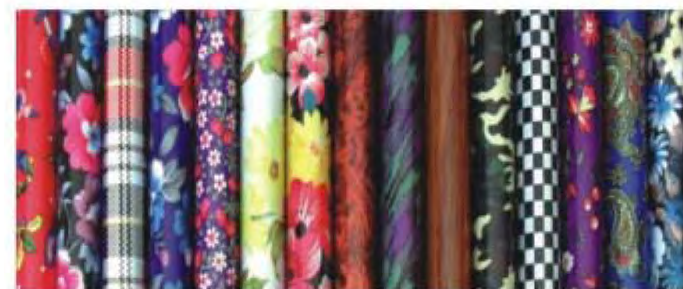
- Strong, heat-treat Aluminum construction
- Automatically open to a full-size cane
- Height adjustable 780~1000mm
- AC927-1L Black
- AC927L Bronze
- AC927-2L Chrome



AC920L-M1 AC920L-M2 AC920L-M3

AC920L-M4

AC920L-M5F



1 2 3 4 5 6 7 8 9 10 11 12 13 14 15



16 17 18 19 20 21 22 23 24 25 26 27 28 29 30

**Handle Parts: Kinds of shape and colors of Handle to be fit all Canes request**

**AC920L-M1 FASHION CANE  
AC920L-M5F OLDABLE FASHION CANE**

- Attractive and fashionable colors
- Genuine imported Maple T-shape handle



G1

G3

G5

**ICE GRIP**

- Durable and rust-resistance stainless steel
- Easily and tightly attached to wood or aluminum cane of standard size
- Conveniently flipped up while not using.



**AC936L BLIND CANE**

- 4 sections and 6 sections foldable cane are available.
- Soft plastic handle with strap
- Visible in the night: covered with reflection tape in white and red
- Size differs from 28" to 52" in 2 inch length



AC940L

AC9111L

AC911L

AC9401L

**AC940L/9111L/911L/9401L SEAT CANE**

- Durable and lightweight Aluminum construction
- Function either as seat or cane
- Foldable for easy transport and storage
- Various colors are available





AC965L

**AC965L DELUXE 2-BUTTON FOLDING WALKER**

- Height adjustable from 810~980mm
- Width: 560mm , Folded: 100mm, Depth: 470mm



AC965S

**AC965S CHILD FOLDING WALKER**

- Height adjustable from 640~810mm
- Width: 560mm , Folded: 100mm, Depth: 460mm

3" wheeled extension leg, Auto-glide brakes, L&S  
 4" wheeled extension leg, Auto-glide brake with 3" wheel  
 5" wheeled extension leg , Walker Platform Attachment  
 3" Swivel wheel, Walker Skis  
 4" Swivel wheel, Walker Glide cap  
 5" Swivel wheel, Glide cap



AC965L-5 " W

**AC965L-5 2-BUTTON FOLDING WALKER W/WHEEL**

- Height adjustable from 800~970mm
- Width: 640mm, Fold width: 110mm, Depth: 510mm



AC968L-5

**AC968L-5 2-BUTTON FOLDING WALKER W/WHEEL**

- Height adjustable: 800~970mm
- Width: 640mm, Folded width: 110mm, Depth: 510mm



AC919L



AC919-1L

**AC919L RECIPROCATING FOLDING WALKER  
 AC919S RECIPROCATING WALKER SILVER**

- Easy to move forward or backward without lifting the Walker
- 1-button mechanism allows quick and convenient folding
- I-bar provides excellent strength and stability
- Height adjustable from 760~935mm
- Width: 520mm and Folded width: 100mm
- Depth: 460mm



AC913L

AC913LB

**AC913L 1-BUTTON FOLDING WALKER  
 AC913LB FOLDING WALKER SMALL**

- Foam handgrip maximize patient comfort
- 1-button mechanism allows quick and convenient folding
- I-bar provides excellent strength and stability
- Height adjustable from 760~935mm
- Width: 600mm and Fold width: 100mm
- Depth: 460mm



AC913LW

**AC913LW FOLDING WALKER W/WHEEL**

- Height adjustable from 850~1000mm
- Width: 490mm and Folded width: 100mm
- Depth: 400mm





AC962LA

**AC962LA STEP UP FOLDING WALKER**

- 1-button mechanism allows quick and convenient folding
- High and low handgrip for easy seating and standing up
- Height adjustable from 740~865mm
- Width: 560mm and Folded width: 100mm
- Depth: 510mm



AC962LB

**AC962LB STEP UP FOLDING WALKER**

- 2-button mechanism allow easy movement though narrow spaces but great stability
- High and low handgrip for easy seating and standing up
- Height adjustable from 820~1000mm
- Width: 640mm/Folded width:100mm
- Depth: 490mm



AC916LA



AC916LC

S M L

- AC916LA RIGID WALKER
- AC916LC RIGID WALKER, (SIZE: S,M,L)
- AC916LW RIGID WALKER W/WHEEL



AC916LW



AC915L

**AC915L FOLDING WALKER W/H-BAR**

- Foam handgrip maximize patient comfort
- 1-button mechanism allows quick and convenient folding
- H-bar provides excellent strength and stability
- Height adjustable from 760~935mm
- Width: 580mm and Folded width: 100mm
- Depth: 460mm



AC915LW

**AC915LW FOLDING WALKER W/WHEEL**

- Height adjustable from 775~950mm
- Width: 600mm and Fold width: 100mm
- Depth: 460mm



AC916LDW

AC916LD

**AC916LD UK-STYLE WALKER**  
**AC916LDW UK-STYLE WALKER W/WHEEL**

- Made of super light weight material
- Black or gray plastic handgrip are available
- 7/8" aluminum frame, anodized
- Overall width: 24-3/4"(63cm)
- Overall depth: 21-3/4"(55cm)
- Size available in S,M,L.



AC961LA

**AC961LA FOLDING WALKER W/SEAT**

- Canvas seat for comfortable seating
- 1-button mechanism allows quick and convenient folding
- Height adjustable from 745~920mm
- Seat height: 430~600mm
- Width: 490mm and Fold width: 100mm
- Depth: 440mm





AC917L

**AC917L BRITISH FOLDING WALKER**

- 1" anodized aluminum frame
- Easy to fold by pull the line
- Height adjustable from 830~905mm  
Width: 630mm and Fold width: 220mm  
Depth: 610mm



AC965L

**AC965L WALKER W/WHEEL WITH BASKET**

- Lightweight but durable Aluminum with Iron H-bar
- Pushbutton mechanism make it easily fold and open by the fingers or palm
- 2-button allow easy movement though narrow spaces but great stability
- Height adjustable from 780~960mm  
Width: 600mm and Folded width: 100mm  
Depth: 500mm



AC964L

AC964L-5 " W

**AC964L 2-PADDLE WALKER  
AC964L-5"W 2-PADDLE WALKER W/WHEEL**



AC914L

**AC914L TYPE-B FOLDING WALKER  
W/SEAT**

- Padded seat
- Pushbutton folding system
- Height adjustable from 820~920mm  
Seat height: 550~660mm  
Width: 530mm  
Depth: 470mm



AC970

**AC970 MOVABLE WALKER**

- Steel frame with Chrome
- 4\*8" with brake
- Adjustable arm pad
- Height adjustable from 1160~1580mm  
Width: 580mm  
Depth: 830mm



AC971



**AC971 MOVABLE WALKER W/  
HANDLE**

- Steel frame with Chrome
- 4\*4" with brake
- Padded shoulder for extra support and foam seat
- Height adjustable from 1100~1350mm  
Width: 640mm  
Depth: 730mm



AC966LA



AC966LB

**AC966LA CHILD WALKER**

- Easy folding mechanism
- Soft foam handle to match children hands using
- Durable and lightweight aluminum
- Height adjustable from 495~595mm  
Width: 380mm and Folded width: 90mm  
Depth: 270mm

**AC966LB CHILD WALKER W/WHEEL**

- Beloved color plans
- Easy to move with castors
- Soft foam handle to match children hands using
- Height adjustable from 450~550mm  
Width: 540mm and Folded width: 90mm  
Depth: 350mm





AC9701

**AC9701 MOVABLE WALKER**

- Adjustable shoulder support and padded to meet the patient height
- 4\*5" with brake
- Soft handgrip makes comfortable
- Height adjustable from 1010~1420mm
- Width: 530mm
- Depth: 650mm

**AC9702 MOVABLE WALKER**

- Length to handgrip can be adjusted
- 4\*3" with brake
- Padded shoulder support
- Height adjustable from 1040~1350mm
- Width: 600mm
- Depth: 610mm



AC9702



AC972R

**AC972R MOVABLE WALKER**

- Foldable design easy storage and transport
- 4\*8" with break
- Adjustable arm pad
- Height adjustable from 1160~1580mm
- Width: 580mm
- Depth: 830mm

**AC9144L/9144L(S) ALUMINUM ROLLATOR**

- Lightweight frame with liquid-coating
- Easily fold for good storage and transport
- Removable basket can be put in the front of under seat
- PVC padded seat
- Detachable backrest saved space
- 6" high quality solid castors
- Colors available in Blue, Green, Burgundy, Champagne & Titanium
- Optional: Shopping Bag**



AC9144L(S)



AC9144L

**AC9146L ALUMINUM ROLLATOR**

- Lightweight frame with liquid-coating
- Easily fold for good storage and transport
- Easy squeeze and release hand brake system
- PVC padded Seat
- Detachable backrest saved space
- Foldable Footrest for easy step on or off
- 8" high quality solid castors
- Colors available in Blue, Green, Burgundy, Champagne & Titanium
- Optional: Shopping Bag**



AC9146L



AC9144LA

**AC9144LA ALUMINUM ROLLATOR**

- Lightweight frame with liquid-coating
- Easily fold for good storage and transport
- Easy squeeze and release hand brake system;
- PVC padded Seat
- Detachable backrest saved space
- 6" high quality solid castors
- Colors available in Blue, Green, Burgundy, Champagne & Titanium
- Optional: Shopping Basket and Bag**



AC9144L

**AC9144L ALUMINUM ROLLATOR**

- Lightweight frame with liquid-coating
- Easily fold for good storage and transport
- Easy squeeze and release hand brake system
- PVC padded Seat
- Detachable backrest saved space
- PU soft Seat
- 8" high quality solid castors
- Colors available in Blue, Green, Burgundy, Champagne & Titanium
- Optional: Shopping Bag**

Model NO.: Parameter:	Icons									PCS	DIM	(Kg)	NW	GW	Loading Capacity	
	20FT	40HQ														
AC9144L	61	22	45	15	15	56	63	24	79-90	1	63*23*85	110	7/8.5	228	558	
AC9144L(S)	61	22	45	15	15	55	61	25	79-90	1	63*24*84	110	6.9/8.4	228	558	

Model NO.: Parameter:	Icons									PCS	DIM	(Kg)	NW	GW	Loading Capacity	
	20FT	40HQ														
AC9146L	61	22	45	20	20	54	69	25	78-89	1	63*24*85	110	9/10.5	228	558	
AC9144LA	61	22	45	20	20	54	69	25	79-90	1	63*24*85	110	8.2/9.7	228	558	





AC9144L-X

**AC9144L-X ALUMINUM ROLLATOR**

- Lightweight frame with liquid-coating
- Easily fold for good storage and transport
- Easy squeeze and release hand brake system
- Extended-WIDTH PVC padded seat
- Detachable backrest saved space
- Max weight capacity: 350lbs=160KGS
- 8" high quality solid castors
- Colors available in Blue, Green, Burgundy, Champagne & Titanium **Optional: Shopping Bag**



AC9147L

**AC9147L EXTENDED-WIDTH STEEL ROLLATOR**

- Lightweight frame with liquid-coating
- Easily fold for good storage and transport
- Easy squeeze and release hand brake system
- PVC Extra-wide padded Seat
- Detachable backrest saved space
- 8" high quality solid castors
- Max weight capacity: 400lbs=180KGS
- Colors available in Blue, Green, Burgundy, Champagne & Titanium **Optional: Shopping Bag**



AC9147LF

**AC9147LF KNOCK-DOWN ALUMINUM ROLLATOR**

- Lightweight frame with liquid-coating
- Foldable rear wheels, detachable front wheels, safety device locking
- Easy squeeze and release hand brake system
- Detachable backrest saved space
- 8" high quality solid castors
- Max weight capacity: 400lbs=180KGS
- Colors available in Blue, Green, Burgundy, Champagne & Titanium **Optional: Shopping Bag**

FOLDED



AC9141L

**AC9141L ROLLATOR**

- Lightweight frame with liquid-coating
- Easily push down brake system
- PVC padded seat
- Adjustable handle to meet the requested height
- Detachable backrest saved space
- 5" /6" high quality solid castors
- Colors available in Blue, Green, Burgundy, Champagne & Titanium **Optional: Shopping Bag**



AC9142A

**AC9142A STEEL ROLLATOR**

- Steel frame with powder-coated
- Durable and comfortable anatomical handgrip
- PU soft seat
- Adjustable handle to meet the requested height
- Transparent food Tray
- 8" foam wheel



AC9142B

**AC9142B STEEL ROLLATOR**

- Steel frame with powder-coated
- Durable and comfortable anatomical handgrip
- PU soft seat
- Adjustable handle to meet the requested height
- Transparent food Tray
- 8" flat-free rubber wheel
- Cane/sticker holder

Model NO.: Parameter:	Icons									PCS	DIM	(Kg) NW GW	Loading Capacity		
	20FT	40HQ													
AC9147L-X	74	22	56	20	20	55	69	23	78-89	1	74*24*85	220	12.3/13.5	186	450
AC9147L	74	22	56	20	20	55	69	23	78-89	1	74*24*85	170	8.2/10.8	186	450
AC9147LF	61	22	45	20	20	54	68	25	78-89	1	57*25*58	110	8.2/9.7	340	820

Model NO.: Parameter:	Icons									PCS	DIM	(Kg) NW GW	Loading Capacity		
	20FT	40HQ													
AC9141L	61	22	45	12	12	52	60	24	78-89	1	63*24*84	110	7.2/8.7	228	558
AC9142A	60	24	42	20	20	62	69	76	79-91	1	61*26*76	110	11/12.5	232	564
AC9142B	60	24	42	20	20	62	68	76	79-91	1	61*26*76	110	11.5/13.0	232	564





AC9142C

**AC 9142C STEEL ROLLATOR**

- Steel frame with powder-coated
- Forearm Handle with hand brake system
- PU soft seat
- Adjustable handle to meet the requested height
- Transparent food Tray
- 8" flat-free rubber wheel



AC9143A

**AC9143A STEEL DELTA ROLLATOR**

- Steel frame with Chrome
- Height adjustable with hand brake system
- Great for indoor and outdoor use
- Leather shopping bag
- 8" flat-free rubber wheel



AC9143D



AC9143E

**AC9143D STEEL DELTA ROLLATOR**

- Steel frame with powder-coated
- Height adjustable with push-down brake system
- Great for indoor and outdoor use
- Leather shopping bag, basket and food tray
- 8" flat-free rubber wheel

**AC9143E ALUMINUM DELTA ROLLATOR**

- Aluminum Frame with powder-coated
- Height adjustable with hand brake system
- Great for indoor and outdoor use
- Leather shopping bag, basket and food tray
- 8" high quality solid castor



AC9143B

**AC9143B STEEL DELTA ROLLATOR**

- Steel frame with powder-coted
- Height adjustable with hand brake system
- Great for indoor and outdoor use
- Food Tray and basket included
- 8" flat-free rubber wheel



AC9143C

**AC9143C STEEL DELTA ROLLATOR**

- Steel frame with powder-coted
- Height adjustable with hand brake system
- Great for indoor and outdoor use
- Leather shopping bag, basket and food tray
- 8" flat-free rubber wheel



AC968

**AC968 2-WHEEL ROLLATOR**



AC968B

**AC968B 2-WHEEL ROLLATOR WITH SEAT**

Model NO.: Parameter:	Icons								PCS	DIM	(Kg)	NW	GW	Loading Capacity	
	20FT	40HQ	20FT	40HQ											
AC9142C	61	42	62	20	20	23	76	62	102-115	1	61*26*76	110	11.5/13.0	232	564
AC9143A	64	24		20	20		57		82-97	2	66*31*71	110	7.5/16.5	386	940
AC9143B	60	24		20	20		57		82-97	2	66*31*71	110	7.5/16.5	386	940
AC9143C	64	22		20	20		57		82-97	2	66*31*71	110	7.5/16.5	386	940

Model NO.: Parameter:	Icons								PCS	DIM	(Kg)	NW	GW	Loading Capacity	
	20FT	40HQ	20FT	40HQ											
AC9143D	64	22		20	20		57		84-100	2	66*31*71	110	6.8/15.1	386	940
AC9143E	62	24		20	20		57		82-97	2	66*31*71	110	6.8/15.1	386	940
AC968	58	58					7.5		81-93	2	58*33*75	110	4.3/9.0	400	960
AC968B	58	58					7.5		81-93	2	58*33*75	110	4.3/9.0	400	960





AC797L



SHOWER HOLDER



AC797LR

AC797L BATH BENCH W/O BACK

AC797LR BATH BENCH QUICK-RELEASE



AC798L

AC798L SHOWER CHAIR W/BACK



AC798LQ

AC798LQ SHOWER CHAIR TOOL-FREE

- High density PE back and seat
- Durable aluminum frame against corrosion
- Angles legs divided weight over a large area to increase patient security
- Quick release backrest with 3 adjustable position
- Height:330~432mm  
Width:483mm  
Depth: 305mm  
Weight Capacity: 250lbs



A



B

AC781L BATH BENCH WITH EVA CUSHION

- Colors available in BLUE, RED, YELLOW and GREEN



AC796L-B



AC796L-A

AC796L-A/B U-SHAPE BATH BENCH W/BACK

- High density PE back and seat
- Blow mould plastic with a perineum opening and drainage holes
- 1" anodize aluminum frame with angled legs
- Quick release backrest with 3 adjustable position
- Height:330~432mm
- Width: 406mm
- Depth: 381mm
- Weight Capacity: 250lbs

Model NO.: Parameter:	Icons							PCS	DIM	(Kg)	KG	Loading Capacity	
	20FT	40HQ	20FT	40HQ									
AC797L	49	49	30		39	39-49	39-49	4	60*36*41	100	1.7/8.8	1280	3080
AC797LR	50	50	30		44	39-57	35-53	4	57*44*47	100	1.8/9.2	960	2320
AC798L	49	49	30	35	51	39-86	35-52	4	60*36*41	100	3.1/14.4	1280	3080
AC798LQ	50	50	30	36	49	71-89	35-53	4	64*52*53	100	2.9/13.6	640	1540

Model NO.: Parameter:	Icons							PCS	DIM	(Kg)	KG	Loading Capacity	
	20FT	40HQ	20FT	40HQ									
AC781L	49	39	30	39	51	73-83	35-45	2	69*20*40	100	43.1/7	1020	2460
AC796L-A	49	49	33	36	58	71-89	36-54	5	82*35*62	100	2.8/16.0	790	1910





AC795L U-SHape BATH BENCH W/O BACK



AC782LA BATH STOOL, PP



AC782LB BATH STOOL, PE



AC782LC BATH STOOL, BAMBOO



AC790L FOLDABLE STEEL BATH BENCH



AC790LB FOLDABLE ALUMINUM BATH BENCH



AC790LC FOLDABLE STEEL CHAIR WITH BACK



AC790LD FOLDABLE ALUMINUM CHAIR WITH FOLDABLE BACK



AC799LA TOOL-FREE TRANSFER BATH BENCH



AC799LB TRANSFER BATH BENCH W/BACK

Model NO.: Parameter:	Icons							PCS	DIM	(Kg)	KG	Loading Capacity	
	20FT	40HQ	20FT	40HQ									
AC795L	49	49	33	58	36-54	36-54	5	82*35*62	100	1.8/10.0	790	1910	
AC782LA	32	32	32	32	35-53	35-53	6	49*39*42	100	1.22/9.32	2100	5100	
AC782LB	32	32	32	32	38-55	38-55	2	36*36*40	100	1.54/2.0	1080	2620	
AC782LC	58	58	58	58	34-47	34-47	1	59*42*11	100	3.0/4.0	1030	2500	
AC790L	49	49	30	38	52	48	2	55*54*26	100	3.1/7.1	726	1760	
AC790LB	51	50	31	43-49	48-51	48-51	1	52*39*10	100	2.4/3.0	1380	3350	

Model NO.: Parameter:	Icons							PCS	DIM	(Kg)	KG	Loading Capacity	
	20FT	40HQ	20FT	40HQ									
AC799LA	77	70	41	39	53	81-91	43-53	2	80*22*45	100	4.7/10.4	690	1680
AC799LB	81	70	41	35	55	81-91	46-56	2	82*46*46	100	4.4/9.8	320	800





**AC799L COMMODE/SHOWER CHAIR**

- Lightweight and durable aluminum frame
- Height adjustable from 810~910mm
- Suction Rubber tips durable and slip proof.
- Extended seat and backrest for extra comfort during shower



**AC799LD PADDED TRANSFER BATH BENCH**

- Lightweight and durable aluminum frame
- Height adjustable from 810~910mm
- Suction Rubber tips durable and slip proof



**AC792LD SHOWER CHAIR WITH FOOTREST**



**AC792LC SHOWER CHAIR WITH CASTORS**



**AC792LA STEEL BATH CHAIR**



**AC791 STAINLESS STEEL BATH CHAIR**



**AC792LB STAINLESS SWIVEL BATH CHAIR**



**AC794A BATHTUB SEAT**

- Length: 730mm
- Width: 230mm
- Depth: 230mm



**AC794B BATHTUB SEAT KNOCK-DOWN DESIGN**

- Length adjustable: 800~900mm
- Width: 420mm
- Depth: 230mm

Model NO.: Parameter:	Icons						PCS	DIM	(Kg)	KG	Loading Capacity		
	20FT	40HQ											
AC799L	68	62	41	39	49	84-94	46-56	1	64*41*42	100	5.7/6.0	254	620
AC791	55	50	37	37			39-49	2	72*60*56	100	4.3/5.3	220	562
AC792LA	50	50	37	37	52	81-91	49-59	2	86*56*57	100		204	500
AC792LB	73	50	37	37	52			2	72*56*38	100	4.3/9.6	366	880

Model NO.: Parameter:	Icons						PCS	DIM	(Kg)	KG	Loading Capacity		
	20FT	40HQ											
AC794A	73	23	23				18	5	84*26*41	100	1.5/9	1560	3800
AC794B	80-90	42	23				27	22	42*23*10	100	1.5/2.5	290	7040





**AC794C PLASTIC BATHTUB SEAT**

- Length adjustable: 410~640mm
- Width: 320mm
- Depth: 190mm
- Handle available in White, Red, Blue, Green, Yellow



**AC793 FOLDABLE SHOWER CHAIR W/LEG**

- Space-saving design
- Seat width: 500mm
- Seat depth: 310mm
- Height adjustable: 380mm~530mm



A



B

**AC783LA SHOWER CHAIR  
AC783LB SHOWER CHAIR W/BACK**

- Tool-free backrest and armrest
- PE seat and back
- Aluminum frame
- Suction rubber tips



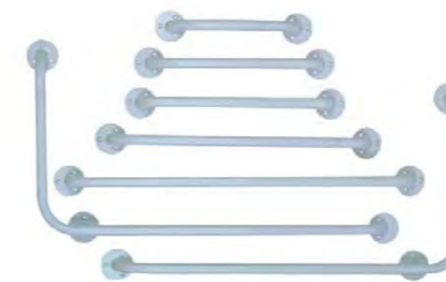
**AC784L BATHTUB BAR**

- 1" steel bar provides reliable patient assistance into or out of the Bathtub
- Locking device attached to tub wall up to 178mm wide
- Width: 152mm , Height: 355mm
- Colors available in black, blue, grey, green and pink



**AC785 SUPPORT LEG GRAB RAIL**

- 1"Steel tube, powder-coating
- Adjustable support leg
- Upright fold-away when not in use to save space
- Wall bracket: 10\*23cm
- Overall length: 74cm



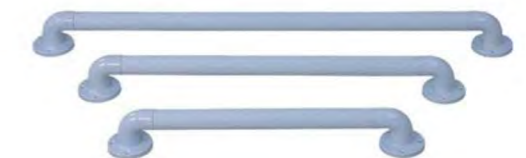
**AC786~5-9 STEEL GRAB BAR ENAMEL-COATED**



**AC787~9 STEEL GRAB BAR  
KNURLED, CHROME**



**AC788~9 STAINLESS  
STEEL GRAB BAR**



**AC789~9 PLASTIC GRAB BAR**

- ABS flanges and PVC tubing
- Size available in 12", 16", 18",24", and 32".
- Material available in steel, stainless steel and ABS

Model NO. Parameter:	Parameter:							PCS	DIM	(Kg)	KG	Loading Capacity	
	32	32	10	71	19	2	72*12*33					100	2.3/3.5
AC794C	32	32	10	71	19	2	72*12*33	100	2.3/3.5	1980	4760		
AC783	51	40	33	44	73-85	41-53	2	34*17*62	100	3.2/7.4	1860	3800	



# BATHROOM SAFETY



AC894LW ALUMINUM COM-  
MODE CHAIR W/CASTOR



AC894L ALUMINUM COM-  
MODE CHAIR



AC696 FOLDABLE COM-  
MODE CHAIR



AC693B ALUMINUM  
COMMODE CHAIR W/  
FOOTSTEP



AC693A COMMODE  
CHAIR W/FOOTSTEP



AC696W COMMODE CHAIR  
W/CASTOR

Model NO: Parameter:	Icons				PCS	DIM	(Kg)	NW GW	Loading Capacity	
	20FT	40HQ	20FT	40HQ						
AC894LW	55	46	40		1	53*21*77	100	5.2/7.0	326	792
AC894L	55	46	40	8 8	1	53*21*77	100	4.2/6.6	326	792
AC898	39				6	79*36*41	100	1.7/12	1500	3660
AC693B	56	45	52	8 10	1	56*51*15	100	8.2/10.0	654	1587
AC693A	54	44	43	10 10	1	53*26*73	100	10.2/12.0	278	676
AC897	39				2	68*21*41	100	2.4/6.6	960	2300

# BATHROOM SAFETY



AC810 COMMODE CHAIR  
W/BACK



AC893 COMMODE CHAIR  
W/SOFR SEAT



AC893F FOLDABLE COM-  
MODE CHAIR



AC810C ALUMINUM COM-  
MODE CHAIR W/BACK



AC810LA EXTENDED-WIDTH  
COMMODE CHAIR



AC810B COMMODE  
CHAIR W/BACK



AC800 COMMODE CHAIR W/  
DROP-WOWN ARMREST

AC800W COMMODE CHAIR W/  
CASTOR



Model NO: Parameter:	Icons				PCS	DIM	(Kg)	NW GW	Loading Capacity	
	20FT	40HQ	20FT	40HQ						
AC810LA	79	62	42		2	82*55*56	100	6.7/15.2	220	540
AC810B	65	47	37		4	66*66*66	100	3.4/8.6	388	944
AC899	54	43	40		4	80*47*57	100	3.8/17.0	520	1260
AC800	57	49	40		1	56*38*39	100	6.2/8.0	338	820



# BATHROOM SAFETY



AC817LA



AC817LA ALUMINUM FOLDABLE COMMODE CHAIR SOFE SEAT



AC897



AC898

AC897/8 COMMUNE SEAT



AC606 ALUMINUM FOLDABLE COMMUNE CHAIR. SOFE CHAIR



AC899 COMMUNE SEAT



AC812LA COMMUNE FRAME, CHROME



AC800N TOILET SAFETY RAILS



AC812LB COMMUNE FRAME, POWDER-COATING



AC812LC COMMUNE FRAME, POWDER-COATING

# BATHROOM SAFETY



AC880A RAISED TOILET SEAT



AC881A RAISED TOILET SEAT W/ARMREST



AC881B RAISED TOILET SEAT 2"/4"/6"



AC881C RAISED TOILET SEAT 2"/4"/6"



AC881D PLASTIC COMMUNE



AC881E RAISED TOILET SEAT



AC881F MULTI-POSITION OPEN PADDEDRAISED TOILET SEAT (SOFT)



AC882A BEDPAN



AC882C BEDPAN W/LID

Model NO. Parameter:	Chair		Wheelchair		Walker		PCS	DIM	(Kg)	NW	GW	Loading Capacity	
	54	43	70	70-82	20FT	40HQ							
AC812LA	54	43					4	66*66*66	100	5.0/22.0		388	944
AC812LB	61-55	54			70	70-82	2	55*20*72	100	5.0/6.8		710	1716





AC882B BEDPAN W/  
HANDLE



AC882D BEDPAN W/  
HANDLE & LID



AC882S BEDPAN, S/S



A  
AC665A/B MALE URINE



B



AC663B FEMALE URINE



AC665S STAINLESS STEEL URINE



AC664B UNISEX URINE



AC608E STEEL COMMUNE WHEELCHAIR

Chromed steel frame, 6" front castor, 24 " rear spoken wheel, fixed armrest and footrest, soft seat with a hole part



AC608E (PU) ALUMINUM COMMUNE WHEELCHAIR

Aluminum lightweight and durable frame, 6" front castor, 24 " rear spoken wheel, fixed armrest and footrest, soft seat with a hole part



AC609 STEEL COMMUNE WHEELCHAIR

Chromed steel frame, 8" front castor, 24 " rear spoken wheel, fixed armrest and footrest, removable PVC seat cushion



AC609B STEEL COMMUNE WHEELCHAIR

Steel frame with powder-coating finish, 8" front castor, 24 " rear Mag wheel, fixed armrest and footrest, PVC seat

Model NO.:	Parameter:	63	23	46	44	20	60	49	92	87	40	40	PCS	DIM	(Kg)	NW	GW	20FT	40HC	Loading Capacity
AC608E		63	23	46	44	20	60	49	92	87	40	40	1	93*29*90	100	18.5/20.5	116	280		
AC608(PE)		61	23	41		15	57	52		90	40	40	1	93*29*90	100	17.0/19.0	116	280		
AC609		64	24	43	44	20	60	48	92	88	40	40	1	93*29*90	100	18.5/20.5	116	280		
AC609B		64	24	43	44	20	60	48	92	88	40	40	1	93*29*90	100	20.0/22.0	116	280		



# COMMUNE WHEELCHAIR

# COMMUNE WHEELCHAIR



**AC683 STEEL COMMUNE WHEELCHAIR**  
Detachable armrest/footrest; PVC seat; steel frame with chrome finish; 8" castor, 24" rear spoken wheel



**AC689 STEEL COMMUNE WHEELCHAIR**  
Drop-down armrest and detachable footrest, PVC seat, Steel frame with chrome finish, 5" castor, 2 with brakes



**AC691 STEEL COMMUNE WHEELCHAIR**  
Fixed armrest and detachable footrest, PVC seat, steel frame with powder-coating, 5" castor, 2 with brakes



**AC695 STEEL COMMUNE WHEELCHAIR**  
Drop-down armrest and detachable footrest, PVC seat, steel frame with powder-coating, 5" castor, 2 with brakes



**AC689N STAINLESS STEEL COMMUNE WHEELCHAIR**  
Drop-down armrest and detachable footrest, PU seat, stainless steel frame, 5" castor, 2 with brakes



**AC670S STAINLESS STEEL COMMUNE WHEELCHAIR**

Drop-down armrest and detachable footrest, PU seat, Stainless steel frame, 5" castor, 2 with brakes. Detachable backrest make the package small for easy transport and storage.



**AC609GCE FULL RECLINING COMMUNE WHEELCHAIR**

Drop-down armrest and elevating footrest, PVC seat, steel with chrome finish, 8" castors and 24" spoken rear wheel

Model NO.: Parameter:	Icons										PCS	DIM	(Kg)	NW GW	Loading Capacity		
	20FT	40HC	20FT	40HC													
AC683	58	23	46	44	15	60	39	80	90	40	40	1	76*29*89	100	20.1/22.0	142	346
AC689	58		43	43	12	12	52	111	131	40	45	1	55*54*55	100	12.2/13.8	170	416
AC691	55		44	43	12	12	52	82	92	40	37	1	55*54*55	100	12.0/13.5	170	416
AC695	48		45	43	12	12	52	82	92	40	37	1	55*54*55	100	12.0/13.5	170	416

Model NO.: Parameter:	Icons										PCS	DIM	(Kg)	NW GW	Loading Capacity		
	20FT	40HC	20FT	40HC													
AC689N	46		44	43	12	12	54	84	97	40	45	1	56*54*56	100	10.5/12.0	170	416
AC670S	48		44	43	12	12	55	88	102	40	45	1	54*53*56	100	17.0/19.0	170	416
AC609GCE	63	32	46	44	20	60	55	116	120	40	43	1	96*34*93	100	26.5/28.5	92	226



# COMMODOE WHEELCHAIR

# STEEL WHEELCHAIR



## AC608GCE FULL RECLINING COMMODOE WHEELCHAIR

Drop-down armrest and elevating footrest, soft seat with hole part, steel with chrome finish, 8" castors and 24" spoken rear wheel



## AC608LGCE FULL RECLINING COMMODOE WHEELCHAIR

Drop-down armrest and elevating footrest, soft seat with hole part, aluminum lightweight and durable frame, 8" castors and 24" spoken rear wheel

Model NO.:	Parameter:										PCS	DIM	(Kg)	NW GW	Loading Capacity		
	63	30	44	44	20	57	53	172	128	40	40	1	88*37*100	100	26.5/28.5	86	206
AC608GCE	63	30	44	44	20	57	53	172	128	40	40	1	88*37*100	100	26.5/28.5	86	206
AC608LGCE	64	32	46	44	20	60	52	118	122	40	40	1	97*41*86	100	17.0/19.0	82	198



# STEEL WHEELCHAIR



**AC809 STEEL WHEELCHAIR**

18" seat, fixed armrest/footrest, PVC leather upholstery, Steel frame with chrome finish, 8" castors, 24" rear spoken wheel with solid tire



**AC809E STEEL WHEELCHAIR**

18" seat width, fixed armrest/footrest. PVC leather upholstery, steel frame with powder-coating, 8" castors and 24" rear spoken wheel with solid tire



**AC809E-B STEEL WHEELCHAIR**

18" seat width, Fixed armrest/footrest, PVC leather upholstery, cross bar and hand rim in powder-coating, 8" front castor and 24" rear spoken wheel with solid tire.



**AC873 ECONOMY WHEELCHAIR**

18" seat, fixed armrest/footrest, Nylon fabric upholstery, steel frame in chrome finish, 8" castors, 24" rear spoken wheel with solid tire

# STEEL WHEELCHAIR



**AC874 EXTENDED-WIDTH WHEELCHAIR**

20" seat width, fixed armrest/footrest. PVC leather upholstery, double cross bar with chrome finish, 8" castors and 24" rear spoken wheel with solid tire



**AC875 ECONOMY WHEELCHAIR**

18" seat, fixed armrest/footrest, plastic foot-plate. Nylon fabric upholstery, steel frame in chrome finish, 8" castors, 24" rear spoken wheel with solid tire



**AC972B STEEL WHEELCHAIR**

18" seat, fixed armrest and detachable footrest, PVC leather upholstery, steel frame with Chrome finish, 8" castors, 24" rear Mag wheel with solid tire



**AC972BC STEEL WHEELCHAIR**

18" seat, fixed armrest and elevating footrest, Nylon fabric upholstery, steel frame with powder-coating, 8" castors, 24" rear Mag wheel with solid tire

Model NO.: Parameter:	Icons										PCS	DIM	(Kg)	NW	GW	Loading Capacity	
	20FT	40HC															
AC809B	64	24	46	40	20	60	47	93	88	41	41	1	93*23*88	100	18.0/20.0	144	378
AC809E	64	24	46	40	20	60	47	93	88	41	41	1	93*23*88	100	18.0/20.0	144	378
AC809E-B	64	24	46	40	20	60	47	93	88	41	41	1	93*23*88	100	18.0/20.0	144	378
AC873	64	24	46	40	20	60	47	93	88	41	41	1	93*23*88	100	18.0/20.0	144	378

Model NO.: Parameter:	Icons										PCS	DIM	(Kg)	NW	GW	Loading Capacity	
	20FT	40HC															
AC874	71	26	51	40	20	60	48	94	92	41	41	1	93*29*92	136	19.0/21.0	112	274
AC875	64	24	46	40	20	60	47	93	88	41	41	1	93*23*88	100	18.0/20.0	144	378
AC972B	64	25	46	40	20	60	49	79	88	40	40	1	80*24*88	100	18.3/20.3	172	402
AC972BC	63	27	43	40	20	60	50	79	89	39	39	1	80*26*89	100	19.5/21.5	150	368



# STEEL WHEELCHAIR



**AC972BE STEEL WHEELCHAIR**

18" seat, fixed armrest and detachable footrest, PVC leather upholstery, steel frame with powder-coating finish, 8" castors, 24" rear Mag wheel with solid tire



**AC972BN STEEL WHEELCHAIR**

18" seat, fixed armrest and detachable footrest, PVC leather upholstery, steel frame with powder-coating finish, 8" castors, 12" rear wheel



**AC974-51 STEEL WHEELCHAIR**

20" seat, fixed armrest and detachable footrest, Nylon fabric upholstery, double cross bar with powder-coating finish, 8" castors, 24" rear spoken wheel with solid tire



**AC903 STEEL WHEELCHAIR**

18" seat, fixed footrest and detachable armrest, PVC leather upholstery, steel frame with chrome finish, 8" castors, 24" rear spoken wheel with solid tire

Model NO.: Parameter:	Icons											PCS	DIM (mm)	(Kg)	NW GW	Loading Capacity	
	20FT	40HQ															
AC972BE	63	27	43	40	20	60	50	79	89	38	38	1	80*26*89	100	18.3/20.3	150	368
AC972BN	59	25	8	40	20	60	48	70	88	42	42	1	82*26*89	136	14.0/16.0	150	368
AC974-51	59	25	8	40	20	60	48	70	88	42	42	1	82*26*89	100	14.0/16.0	150	368
AC903	64	24	46	40	20	60	47	93	88	41	41	1	93*23*88	100	18.0/20.0	144	378

# STEEL WHEELCHAIR



**AC902 STEEL WHEELCHAIR**

18" seat, detachable footrest and armrest, PVC leather upholstery, steel frame with chrome finish, 8" castors, 24" rear spoken wheel with solid tire



**AC901 STEEL WHEELCHAIR**

18" seat, detachable footrest and armrest, PVC leather upholstery, steel frame with chrome finish, 8" foam castors, 24" rear spoken wheel with solid tire



**AC901B STEEL WHEELCHAIR**

18" seat, fixed footrest and detachable armrest, PVC leather upholstery, steel frame with chrome finish, 8" foam castors, 12" rear spoken wheel



**AC903B STEEL WHEELCHAIR**

18" seat, detachable armrest and footrest, PVC leather upholstery, steel frame with chrome finish, 8" castors, 24" rear Mag wheel with solid tire

Model NO.: Parameter:	Icons											PCS	DIM (mm)	(Kg)	NW GW	Loading Capacity	
	20FT	40HQ															
AC902	64	28	46	40	20	60	50	79	89	41	41	1	93*23*88	100	18.0/20.0	144	378
AC901	64	28	46	40	20	60	50	79	91	40	40	1	80*29*89	100	14.0/16.0	150	368
AC901B	64	28	46	40	20	30	50	79	91	40	40	1	80*29*89	100	14.2/16.2	136	330
AC903B	63	28	46	40	20	60	48	82	87	40	40	1	80*29*89	100	17.0/19.0	136	330



# STEEL WHEELCHAIR



**AC903E STEEL WHEELCHAIR**

18" seat, detachable armrest and footrest, PVC leather upholstery, steel frame with powder-coating finish, 8" castors, 24" rear spoken wheel with solid tire



**AC903BE STEEL WHEELCHAIR**

18" seat, detachable armrest and footrest, Nylon leather upholstery, steel frame with powder-coating finish, 8" castors, 24" rear Mag wheel with solid tire



**AC904 STEEL WHEELCHAIR**

18" seat, detachable armrest and footrest, PVC leather upholstery, steel frame with powder-coating, 8" foam castors, 12" rear wheel



**AC903BE-51/56 STEEL WHEELCHAIR**

20"/22" seat, detachable armrest and footrest, PVC leather upholstery, steel frame with chrome finish, 8" front castors, 24" rear Mag wheel with solid tire

# STEEL WHEELCHAIR



**AC901C STEEL WHEELCHAIR**

18" seat, detachable armrest and elevating footrest, PVC leather upholstery, steel frame with powder-coating finish, 8" castors, 24" rear spoken wheel with solid tire



**AC903BCE STEEL WHEELCHAIR**

18" seat, detachable armrest and elevating footrest, PVC leather upholstery, steel frame with powder-coating finish, 8" castors, 24" rear Mag wheel with pneumatic tire



**AC901BC STEEL WHEELCHAIR**

18" seat, detachable armrest and elevating footrest, PVC leather upholstery, steel frame with chrome finish, 8" castors, 12" rear wheel



**AC802-35 CHILD WHEELCHAIR**

14" seat, fixed armrest and footrest, PVC leather upholstery, steel frame with chrome finish, 6" castors, 20" rear spoken wheel with PU tire

Model NO. Parameter:	Icons										PCS	DIM	(Kg)	NW GW	Loading Capacity		
	20FT	40HQ	20FT	40HQ													
AC903E	64	28	46	40	20	60	50	79	91	40	40	1	80*29*89	100	16.8/189.8	136	330
AC903BE	73	30	51	40	20	60	50	79	91	40	40	1	80*29*89	100	20.0/22.0	136	330
AC904	57	22	45	40	20	30	50	79	89	40	40	1	80*29*89	100	20.0/22.0	136	330

Model NO. Parameter:	Icons										PCS	DIM	(Kg)	NW GW	Loading Capacity	
	20FT	40HQ	20FT	40HQ												
AC901C	24	40	20	60	50	79	90	38	38	1	80*28*91	100	19.0/21.0	138	336	
AC903BCE	24	40	20	60	50	79	90	38	38	1	80*28*91	100	19.0/21.0	138	336	
AC901BC	24	40	20	30	50	79	90	38	38	1	80*28*91	100	19.0/21.0	138	336	
AC802-35	24	35	15	30	40	81	85	30	30	1	93*23*89	100	12.5/14.5	144	378	



# STEEL WHEELCHAIR



## AC980A-35 CHILD WHEELCHAIR

14" seat, drop-down armrest and adjustable footrest, Nylon fabric upholstery, Aluminum frame with colorful coating, 6" castors, 20" rear spoken wheel with PU tire



## AC9001B FOLDABLE MINI WHEELCHAIR

Aluminum lightweight and durable frame, 6' castors and 8" rear wheel, flip up armrest, hand-brake systems.



AC901GC

## AC901GC FULL RECLINING WHEELCHAIR

17" seat, detachable armrest and elevating footrest, loop and hand brakes for easier using, steel frame with coating finish, 8" castors, 24" rear spoken wheel with solid tire



AC903GC

## AC903GC FULL RECLINING WHEELCHAIR

17" seat, detachable armrest and elevating footrest padded, comfortable head rest, steel frame with coating finish, 8" castors, 24" rear spoken wheel with solid tire

# STEEL WHEELCHAIR



## AC972 STEEL WHEELCHAIR

18" seat, fixed armrest and detachable footrest, PVC leather upholstery, steel frame in chrome finish, 8" castors, 24" rear spoken wheel with solid tire



AC976

## AC976 TRANSPORT WHEELCHAIR

Steel frame with chrome finish, foldable backrest, 4\*8" wheel with brakes



## AC809B STEEL WHEELCHAIR

18" seat, fixed armrest and detachable footrest, PVC leather upholstery, steel frame in chrome finish, 8" castors, 24" rear Mag wheel with solid tire



## AC972E STEEL WHEELCHAIR

18" seat, fixed armrest and detachable footrest, PVC leather upholstery, steel frame with powder coating, 8" castors, 24" rear spoken wheel with solid tire



## AC984BE STEEL WHEELCHAIR

18" seat, fixed armrest and detachable footrest, Nylon fabric upholstery, double cross bar with powder coating, 8" castors, 24" rear Mag wheel with solid tire

Model NO. Parameter:	Icons										PCS	DIM	(Kg)	NW GW	Loading Capacity		
	20FT	40HC	20FT	40HC													
AC980A-35	22	35	15	50	40	89	75	30	30	1	90*33*73	100	13.8/16.0	130	300		
AC9001B	21	38	12.5	15	45	78	90	30	30	1	48*34*66	100	7.0/8.5	260	630		
AC901GC	31	40	20	60	46	95	122	49	60	1	95*34*93	100	24.6/26.6	90	226		
AC903GC	63	31	43	40	20	60	46	95	122	49	60	1	95*34*93	100	24.6/26.6	90	226

Model NO. Parameter:	Icons										PCS	DIM	(Kg)	NW GW	Loading Capacity		
	20FT	40HC	20FT	40HC													
AC972	64	25	46	40	20	60	49	79	88	40	40	1	80*24*88	100	18.3/20.3	172	402
AC976	60	30	41	40	20	20	50	68	102	50	50	1	63*26*76	100	12.9/14.9	230	546
AC809B	64	24	46	40	20	60	47	93	88	41	41	1	93*23*88	100	18.0/20.0	144	378
AC972E	64	28	40	40	20	60	49	79	88	40	40	1	80*24*88	100	18.3/20.3	172	402
AC984BE	64	28	44	40	20	60	48	80	88	41	41	1	80*27*89	100	18.5/20.3	150	366



# ALUMINUM WHEELCHAIR



**AC903LB ALUMINUM WHEELCHAIR**

Flip-up armrest and swing-away footrest, dual-axle height adjustable, 8" castors and 24" rear Mag wheel



**AC903LBE ALUMINUM WHEELCHAIR**

Flip-up armrest and swing-away footrest, 3-position height adjustable, 8" castors and 24" rear Mag wheel



**AC988LQ ALUMINUM WHEELCHAIR**

Flip-up armrest and swing-away footrest, dual-axle height adjustable, 8" castors and 24" rear Mag wheel, quick-release rear wheel



**AC988LQE DELUX ALUMINUM WHEELCHAIR**

Flip-up armrest with height adjustable design and swing-away footrest, dual-axle height adjustable, 8" castors and 24" rear Mag wheel, quick-release rear wheel and breathable upholstery

Model NO.: Parameter:	Icons										PCS	DIM	(Kg)	NW GW	Loading Capacity		
	20FT	40HQ	20FT	40HQ													
AC903LB	63	28	46	40	20	60	51	77	89	40	43	1	80*29*90	100	15.7/17.7	134	326
AC903LBE	63	28	46	40	20	60	50	79	90	40	43	1	80*29*90	100	18.5/20.5	134	326
AC908LQ	73	30	51	40	20	60	50	80	90	40	43	1	80*29*90	100	20.0/22.0	134	326
AC908LQE	65	29	46	40	20	60	50	90	93	40	44	1	84*30*93	100	16.6/18.6	120	290

# ALUMINUM WHEELCHAIR



**AC903LAQ ALUMINUM WHEELCHAIR**

Flip-up armrest and swing-away footrest, foldable backrest and adjustable seat height, 8" castors and 24" rear spoken wheel with PU Tire



**AC864L J-1 ALUMINUM WHEELCHAIR**

Fixed armrest/footrest, aluminum with coating finish, 6" castors and 22" rear spoken wheel with PU tire



**AC873LAJ ALUMINUM WHEELCHAIR**

Fixed armrest/footrest, double cross bar, foldable backrest, loop and hand brake systems, 6" castors and 20" rear spoken wheel with PU tire



**AC871LBJ ALUMINUM WHEELCHAIR**

Fixed armrest/footrest, double cross bar, loop and hand brake systems, 6" castors and 16" rear Mag wheel with PU tire

Model NO.: Parameter:	Icons										PCS	DIM	(Kg)	NW GW	Loading Capacity		
	20FT	40HQ	20FT	40HQ													
AC903LAQ	60	29	41	40	20	60	50	84	93	40	44	1	84*30*93	100	14.6/16.6	120	290
AC864LJ-1	62	29	41	40	15	56	46	90	87	40	43	1	90*28*87	100	14.2/16.2	126	310
AC873LAJ	58	28	43	35	15	50	49	80	88	39	39	1	82*28*75	100	12.0/14.0	162	394



# ALUMINUM WHEELCHAIR



**AC959LB ALUMINUM WHEELCHAIR**

Fixed armrest and swing-away footrest, angle adjustable to seat and backrest, adjustable headrest, PU armrest and leg-rest pad, 6" castors and 16" rear Mag wheel with PU tire



**AC874L J-1 ALUMINUM WHEELCHAIR**

17" seat, Aluminum lightweight and durable frame, fixed armrest/footrest, loop and hand brake combined, 8" castors and 24" rear spoken wheel with PU tire



**AC954LGC-A/B FULL RECLINING WHEELCHAIR**

17" seat, Aluminum lightweight and durable frame, detachable armrest and elevating footrest padded. 8" castors and 24" rear spoken wheel with pneumatic tire



Model NO.: Parameter:	Icons											PCS	DIM	(Kg)	NW GW	Loading Capacity	
	50	28	35	38	15	40	49	79	96	40	45					20FT	40HQ
AC959LB	50	28	35	38	15	40	49	79	96	40	45	1	79*28*91	100	17.8/19.8	139	342
AC874LJ -1	63	26	43	40	20	60	50	92	90	40	40	1	94*28*92	100	12.8/14.8	116	280
AC954LGC	68	35	46	40	20	60	48	87	132	49	49	1	87*35*93	100	18.0/20.0	98	240

# ALUMINUM WHEELCHAIR



**AC904LBJ ALUMINUM WHEELCHAIR**

17" seat, foldable backrest, fixed armrest and swing-away footrest, loop and hand brake combined, 6" castors and 12" rear spoken wheel with PU tire



**AC976LAJ-12 " ALUMINUM WHEELCHAIR**

17" seat, foldable backrest, fixed armrest and swing-away footrest, loop and hand brake combined, 6" castors and 12" rear spoken wheel with PU tire



**AC861LJ ALUMINUM WHEELCHAIR**

19" seat, foldable backrest, flip-up armrest and fixed footrest, 6" castors and 12" rear spoken wheel with PU tire



**AC862LJ ALUMINUM WHEELCHAIR**

17" seat, foldable backrest, aluminum lightweight and durable frame, fixed armrest and footrest, loop and hand brake combined, 8" castors and 24" rear spoken wheel with PU tire

Model NO.: Parameter:	Icons											PCS	DIM	(Kg)	NW GW	Loading Capacity	
	54	26	43	40	15	30	47	68	87	41	41					20FT	40HQ
AC904LBJ	54	26	43	40	15	30	47	68	87	41	41	1	65*29*72	100	9.6/11.6	206	500
AC976LAJ-12	58	27	43	40	20	30	50	75	94	45	45	1	67*26*79	100	11.1/13.1	203	494
AC861LJ	53	27	48	40	15	30	46	89	88	41	41	1	78*28*70	100	9.6/11.6	183	445



# ALUMINUM WHEELCHAIR



**AC864L J-2 ALUMINUM WHEELCHAIR**

17" seat, Aluminum lightweight and durable frame, fixed armrest/footrest, loop and hand brake combined, 6" castors and 22" rear spoken wheel with pneumatic tire



**AC976LA-8 " TRANSPORT WHEELCHAIR**

17" seat, Aluminum frame with powder-coating finish, fixed armrest and detachable footrest, 4\*8" castors



**AC976LAJ-8 " ALUMINUM WHEELCHAIR**

17" seat, Aluminum frame with liquid-coating finish, fixed armrest and swing-away footrest, loop and hand brake combined, 4\*8" castors

# ALUMINUM WHEELCHAIR



**AC874LBJ-16 " ALUMINUM WHEELCHAIR**

17" seat, Aluminum frame with steel cross bars, fixed armrest and detachable footrest, 6" castors and 16" rear spoken wheel with PU tire, loop and hand brake combined.



**AC874L J-2 ALUMINUM WHEELCHAIR**

17" seat, Aluminum frame with steel cross bars, fixed armrest/footrest, loop and hand brake combined, 6" castors and 22" rear spoken wheel with pneumatic tire

Model NO.: Parameter:													PCS	DIM		NW GW	20FT	40HQ	Loading Capacity
AC864LJ-2	63	28	41	41	15	56	47	91	89	40	40	1	92*29*89	100	11.9/13.9	118	286		
AC976LA-8	59	26	43	40	20	20	50	70	95	45	45	1	63*26*79	100	10.0/12.0	216	525		
AC976LAJ-8	59	26	43	40	20	20	50	76	94	43	43	1	69*26*74	100	10.5/12.5	210	512		
AC874LBJ-16	62	26	43	40	15	40	43	87	84	40	40	1	91*33*87	100	11.6/13.6	107	260		
AC874LJ-2	63	30	43	40	15	56	44	90	85	40	40	1	90*29*86	100	13.0/15.0	124	303		



**SPORTS WHEELCHAIR**



**AC720L LEISURE WHEELCHAIR**



**AC721L LEISURE WHEELCHAIR**



**AC776L BADMINTON WHEELCHAIR**



**AC777L PINGPONG WHEELCHAIR**

**SPORTS WHEELCHAIR**



**AC784L TENNIS WHEELCHAIR**



**AC775L BASKETBALL WHEELCHAIR  
(GUARD POSITION)**



**AC775L-B BASKETBALL WHEELCHAIR  
(CENTER POSITION)**



**AC775L-A BASKETBALL WHEELCHAIR  
(FORWARD POSITION)**



**SPORTS WHEELCHAIR**



**AC750L SPEED KING WHEELCHAIR**



**AC756L DANCING WHEELCHAIR**



**AC730L SWORDPLAY WHEELCHAIR**

**SPORTS WHEELCHAIR**



**AC779L RUGBY WHEELCHAIR  
(OFFENSIVE POSITION)**



**AC779L-B RUGBY WHEELCHAIR  
(DEFENSIVE POSITION)**



**AC731L SHOOTING WHEELCHAIR**





# ELECTRIC WHEELCHAIR

# ELECTRIC WHEELCHAIR



# TECHNOLOGY

## ELECTRIC WHEELCHAIR

PARAMETERS :  
 MOTOR: 220W\*2  
 BATTERY :12V\*2, 28AH  
 SLOPE: ≤ 12°  
 RUNNING DISTANCE:≤ 20KMS (FULL CHARGED)  
 SPEED:1-6KMS/H  
 OBSTACLE ACROSS:≤ 5CM



AC101B



AC140-24



AC101-C



AC140-20



AC110A

Powder coated steel folding frame  
 Flip up armrest  
 Detachable footrest  
 Drop-back handle  
 200\*50PU castors  
 12"PU drive wheels



AC111A



AC112A



AC112AR





**AC111J**

Powder coated steel folding frame  
 Flip up armrest  
 Detachable footrest  
 Drop-back handle  
 200\*50 PU castors  
 12" PU drive wheels



**AC121C**

**AC120**

Powder coated steel frame  
 Vehicle seat with reclining back  
 Detachable armrest and footrest  
 Mobile seat  
 200\*50 PU castors  
 12" PU drive wheels



**AC124C**

Powder coated steel frame  
 Vehicle seat with reclining back  
 Detachable armrest and footrest  
 Mobile seat  
 200\*50 PU castors  
 12" PU drive wheels



**AC125C**

Powder coated steel frame  
 Vehicle seat with reclining back  
 Detachable armrest and footrest  
 Mobile seat  
 200\*50 PU castors  
 12" PU drive wheels

- 1, Reinforced metal washers for maximum shock, absorption and safety
- 2, Slide against rubber tips
- 3, Deeper thread for long life
- 4, Heavy duty wall of strong resilient rubber





# CANE HANDLE

# CASTORS/WHEELS

## IMPORTED MAPLE HANDLE



## PLASTIC HANDLE



## CASTORS



## WHEELS





# SPARE PARTS

# COLOR INDICATIONS



## WHEELCHAIR UPHOLSTERY SAMPLES



- 1. Light Black
- 2. Bright Silver
- 3. Explode Light Black
- 4. Bright Black
- 5. Bright Blue
- 6. Coffee
- 7. Italian Blue
- 8. High light Red
- 9. Environmental Green
- 10. Bright Pink Red
- 11. Purple
- 12. Gray White
- 13. Polish White
- 14. Gray Silver
- 15. Light Gray
- 16. Titanium
- 17. Orange
- 18. Yellow





AC20101

## AC20101 1-CRANK MANUAL BED

- L2120\*W900\*H500mm
- Flexible bedstead with anti-bacteria double powder-coating treatment
- Highly durable retractable built-in crank with universal linking card structure, safe, quiet, and smooth operation
- Backrest tilting: 60±5°
- Detachable plastic bed head/foot board
- Collapsible Aluminum side rails
- 5 " castors with brake on the cross
- Equipment: I.V. pole
- Optional: Mattress, bedside cabinet, over-bed table and food board



AC20202



AC20201

## AC20201 2-CRANK MANUAL BED

- L2120\*W900\*H500mm
- Flexible bedstead with anti-bacteria double powder-coating treatment
- Highly durable retractable built-in crank with universal linking card structure, safe, quiet, and smooth operation
- Backrest tilting: 60±5°
- Knee board tilting: 35±5°
- Detachable plastic bed head/foot board
- Collapsible Aluminum side rails
- 5 " castors with brake on the cross
- Equipment: I.V. pole
- Optional: Mattress, bedside cabinet, over-bed table and food board

## AC20202 2-CRANK MANUAL BED

- L2120\*W900\*H500mm
- Flexible bedstead with anti-bacteria double powder-coating treatment
- Mesh bed board
- Highly durable retractable built-in crank with universal linking card structure, safe, quiet, and smooth operation
- Backrest tilting: 60±5°
- Knee board tilting: 35±5°
- Detachable plastic bed head/foot board
- Collapsible Aluminum side rails
- 5 " castors with brake on the cross
- Equipment: I.V. pole
- Optional: Mattress, bedside cabinet, over-bed table and food board



AC20203

## AC20203 2-CRANK LUX MANUAL BED

- L2170\*W900\*H500mm
- Flexible bedstead with anti-bacteria double powder-coating treatment
- Highly durable retractable built-in crank with universal linking card structure, safe, quiet, and smooth operation
- Backrest tilting: 60±5°
- Knee board tilting: 35±5°
- Detachable ABS plastic bed head/foot board
- Down-loading ABS side rails
- 6 " castors with central lock system
- Equipment: I.V. pole
- Optional: Mattress, bedside cabinet, over-bed table and food board



AC20301

## AC20301 3-CRANK MANUAL BED

- L2120\*W900\*H500~750mm
- Flexible bedstead with anti-bacteria double powder-coating treatment
- Highly durable retractable built-in crank with universal linking card structure, safe, quiet, and smooth operation
- Backrest tilting: 60±5°
- Knee board tilting: 35±5°
- HI~LO: 500~750mm
- Detachable plastic bed head/foot board
- Collapsible Aluminum side rails
- 5 " castors with brake on the cross
- Equipment: I.V. pole
- Optional: Mattress, bedside cabinet, over-bed table and food board



AC20501

## AC20501 4-CRANK MANUAL BED

- L2120\*W900\*H500~750mm
- Flexible bedstead with anti-bacteria double powder-coating treatment
- Highly durable retractable built-in crank with universal linking card structure, safe, quiet, and smooth operation
- Backrest tilting: 60±5°
- Knee board tilting: 35±5°
- Reverse and trendelenburg: 12±2°
- HI~LO: 500~750mm
- Detachable plastic bed head/foot board
- Collapsible Aluminum side rails
- 5 " castors with brake on the cross
- Equipment: I.V. pole
- Optional: Mattress, bedside cabinet, over-bed table and food board





AC30201

### AC30201 2-FUNCTION ELECTRIC BED

- L2120\*W900\*H500mm
- Flexible bedstead with anti-bacteria double powder-coating treatment
- 2 motors made in China
- Backrest tilting: 60±5°
- Knee board tilting: 35±5°
- Detachable plastic bed head/foot board
- Collapsible Aluminum side rails
- 5 " castors with brake on the cross
- Equipment: I.V. pole
- Optional: Mattress, bedside cabinet, over-bed table and food board



AC30303(MESH BED BOARD)



AC30302

### AC30302/03/04 3-FUNCTION ELECTRIC BED

- L2120\*W900\*H500~750mm
- Flexible bedstead with anti-bacteria double powder-coating treatment
- 3 motors made in China
- Backrest tilting: 60±5°
- Knee board tilting: 35±5°
- HI~LO: 500~750mm
- Detachable plastic bed head/foot board
- Down-load ABS side rails
- 6 " castors with central brake system
- Equipment: I.V. pole
- Optional: Mattress, bedside cabinet, over-bed table and food board



AC30304 (LONG SIDE RAILS)



AC30305

### AC30305 3-FUNCTION ELECTRIC BED

- L2120\*W900\*H500~750mm
- Flexible bedstead with anti-bacteria double powder-coating treatment
- 3 motors made in China
- Backrest tilting: 60±5°
- Knee board tilting: 35±5°
- HI-LO: 500~750mm
- Detachable plastic bed head/foot board
- Equipment: I.V. pole
- Optional: Mattress, bedside cabinet, over-bed table and food board



AC30502



AC30501

### AC30501/2 5-FUNCTION ELECTRIC BED (SOFT CONNECTION BOARD)

- L2120\*W980\*H450~700mm
- Flexible bedstead with anti-bacteria double powder-coating treatment
- Backrest tilting: 60±5°
- Knee board tilting: 35±5°
- Reverse and trendelenburg: 12±2°
- HI-LO: 450~750mm
- Detachable plastic bed head/foot board
- 6" castors with central brake system
- Equipment: I.V. pole
- Optional: Mattress, bedside cabinet, over-bed table and food board





AC30401



**AC30401 5-FUNCTION ELECTRIC BED**

- L2240\*W1180\*H510~700mm
- 6-function motorized
- Backrest tilting: 0~65°
- Knee board tilting: 0~45
- HI-LO: 480~680mm
- Reverse and trendelenburg: 1~10°
- Loading capacity: 250KGS
- 5.7" luxurious operated LCD
- Weight scale with accurate measurement system
- Noble PP bed head/foot board, 4pcs side rails with wireless LCD remote controller
- 6" castors with central lock system
- Equipment: I.V. pole
- Optional: Mattress, bedside cabinet, over-bed table and food board



**AC30402 SUPER-LUXURIOUS ELECTRIC BED**

- L2310\*W1190\*H510~700mm
- 5-function motorized
- Backrest tilting: 0~65°
- Knee board tilting: 0~45
- HI-LO: 480~680mm
- Reverse and trendelenburg: 1~10°
- Loading capacity: 250KGS
- Weight scale with accurate measurement system
- Noble PP bed head/foot board, 4pcs side rails with easily operated membrane switch
- 6" castors with central lock system
- Equipment: I.V. pole
- Optional: Mattress, bedside cabinet, over-bed table and food board



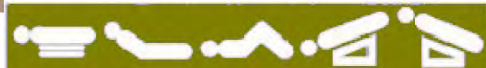
AC30402



**AC30403 SUPER-LUXURIOUS ELECTRIC BED**

- L2310\*W1190\*H510~700mm
- 5-function motorized
- Backrest tilting: 0~65°
- Knee board tilting: 0~45
- HI-LO: 480~680mm
- Reverse and trendelenburg: 1~10°
- Loading capacity: 250KGS
- 10.2" luxurious operated LCD
- Weight scale with accurate measurement system
- Noble PP bed head/foot board, 4pcs side rails with easily operated membrane switch
- 6" castors with central lock system
- Equipment: I.V. pole
- Optional: Mattress, bedside cabinet, over-bed table and food board

AC30403



AC230601



**AC230601 MULTI-FUNCTION ELECTRIC BED**

- L2080\*W970\*H450-700mm
- Flexible bedstead with anti-bacteria double powder-coating treatment
- Imported Linak motor, noise proof, weight capacity over 250KGS
- Backrest tilting: 0~75°
- Knee board tilting: 0~40°
- Adjustable height: 450~700mm
- Reverse and Trendelenburg: 0~10°
- Wood head/foot board
- Collapsible Aluminum side rails
- 5 " castors with brake on the cross
- Equipment: I.V. pole
- Optional: Mattress, bedside cabinet, over-bed table.

**AC20601 HEMECARE BED**

- L2120\*W970\*H480mm
- High quality carbon metal frame
- MDF bed head/foot board, various colors are available
- Aluminum side rail provides more safety
- Wood head/foot board
- 6 " castors with central lock system
- Backrest: 0~80°
- Optional: Mattress, foot table, I.V. stand.



AC20601



**AC30602 HEMECARE ELECTRIC BED**

- L2100\*W1100\*H450~750mm
- Flexible bedstead with anti-bacteria double powder-coating treatment
- Imported Linak motor, noise proof, weight capacity over 250KGS
- Backrest tilting: 0~80°
- Knee board tilting: 0~40°
- Adjustable height: 450~700mm
- Reverse and Trendelenburg: 0~10°
- Wood head/foot board
- 6 " castors with central lock system
- Equipment: I.V. pole
- Optional: Mattress, bedside cabinet, overbed table.



AC30602







AC30603

**AC30603 HOME CARE BED(2 functions)**

- L2000\*W1500\*H485mm
- High quality carbon metal frame
- MDF bed head/foot board, various colors available
- Aluminum side rail for extra safety
- Backrest tilting: 0~80°
- Footrest tilting: 0~45°
- 6 " castors with central lock system
- Optional: I.V. stand, foot table, mattress



AC30604

**AC30604 HOME CARE BED(3 functions)**

- L2000\*W1500\*H350~650mm
- High quality carbon metal frame
- MDF bed head/foot board, various colors available
- Aluminum side rail for extra safety
- Backrest tilting: 0~80°
- Footrest tilting: 0~45°
- 5 " castors with brakes
- Noise proof motors
- Adjustable height: 350~650mm
- Optional: I.V. stand, foot table, mattress



AC30605

**AC30605 HOME CARE BED (5 functions)**

- L2200\*W1030\*H250~630mm
- High quality carbon metal frame
- MDF bed head/foot board, various colors available
- Wood side rail for extra safety
- Backrest tilting: 0~80°
- Footrest tilting: 0~45°
- 4 " noise-proof castors with brakes
- Noise proof motors
- Adjustable height: 250~630mm
- Reverse Trendelenburg: 0~12°
- Optional: I.V. stand, foot table, mattress

**AC30606 HOME CARE BED**



AC30606

- L2140\*W1030\*H250~630mm
- High quality carbon metal frame
- MDF bed head/foot board, various colors available
- Wood side rail for extra safety
- Backrest tilting: 0~80°
- Footrest tilting: 0~45°
- Trendelenburg: 0~12°
- Reverse Trendelenburg: 0~12°
- Adjustable height: 250~630mm
- 4 " noise-proof castors with brakes
- Optional: I.V. stand, foot table, mattress



AC30607

**AC30607 HOME CARE BED**

- L2140\*W1030\*H250~630mm
- High quality carbon metal frame
- MDF bed head/foot board, various colors available
- Aluminum side rail for extra safety
- Backrest tilting: 0~80°
- Footrest tilting: 0~45°
- Trendelenburg: 0~12°
- Reverse Trendelenburg: 0~12°
- Adjustable height: 250~630mm
- 4 " noise-proof castors with brakes
- Optional: I.V. stand, foot table, mattress





AC00001

**AC00001 PLAIN BED**

- 2000\*900\*500mm
- Metal frame
- $\varnothing$  38 Bed Head/Foot Board
- Bed surface is made of cold roll steel sheet
- Optional: Castor, side rail, shoe rack, dinning table, I.V. pole



AC20102

**AC20102 1-CRANK MANUAL BED**

- 2080\*900\*500mm
- Metal frame
- $\varnothing$  38 Bed Head/Foot Board
- Bed surface is made of cold roll steel sheet
- Optional: Castor, side rail, shoe rack, dinning table, I.V. pole



AC20103

**AC20103 1-CRANK HAND-LIFT BED**

- 2000\*900\*500mm
- Metal frame
- $\varnothing$  38 Bed Head/Foot Board
- Bed surface is made of cold roll steel sheet
- Optional: Castor, side rail, shoe rack, dinning table, I.V. pole



**Foldable**

AC20602

**AC20602A 1-CRANK MANUAL FOLDABLE BED  
AC20602B 2-CRANK MANUAL FOLDABLE BED  
AC20602AE 1-MOTOR FOLDABLE BED  
AC20602BE 2-MOTOR FOLDABLE BED**

- Semi-flower bed
- Space-saving foldable design, easy to transport
- 5" noise-proof castors with brake on the cross
- High quality carbon frame with mesh surface



AC20204

**AC20204 2-CRANK MANUAL BED**

- 2000\*900\*480mm
- High quality carbon metal frame
- $\varnothing$  32 tube Bed Head/Foot with MDF board
- Backrest tilting: 0~80°
- Footrest tilting: 0~45°
- Optional: Castor, foot table, mattress, I.V. stand



AC20205

**AC20205 2-CRANK MANUAL BED**

- 2000\*900\*480mm
- High quality carbon metal frame
- $\varnothing$  32 tube Bed Head/Foot with Patient card holder
- Backrest tilting: 0~80°
- Footrest tilting: 0~45°
- Optional: Castor, side rail, shoe rack, dinning table, I.V. pole



AC20104

**AC20104 1/2-CRANK MANUAL BED**

- 2020\*900\*550mm
- Made of completely stainless steel material
- Optional: Castor, side rail, shoe rack, dinning table, I.V. pole





### AC21001 ORTHOPEDICS BED

- L2210\*W1000\*H450mm
- Backrest tilting: 0~80°
- Leg board tilting: 0~40°
- Equipment: I.V. pole
- Optional: mattress
- Made of complete stainless steel

AC21001



### AC21002 ORTHOPEDICS BED

- L2210\*W1000\*H450~600mm
- Backrest tilting: 0~80°
- Leg board tilting: 0~40°
- Adjustable height: 450~700mm
- Equipment: I.V. pole, two trapezes
- Optional: mattress

AC21002



AC00801

### AC00801 STAINLESS STEEL CHILD BED

- L1600\*W700\*H500mm
- Completely stainless steel frame
- 3" castor with brakes
- Drop-down side rails
- Optional: I.V. stand, mattress



AC00802

### AC00802 FLAT CHILD BED

- L1600\*W700\*H630mm
- High quality carbon metal frame
- Equipped with colorful MDF head/foot board
- Slide-down side rails for more convenience
- Optional: I.V. stand, mattress



AC20803

### AC20803 CRANK CHILD BED

- L1600\*W700\*H630mm
- High quality carbon metal frame
- Equipped with colorful MDF head/foot board
- Slide-down side rails for more convenience
- Backrest tilting: 0~80°
- Optional: I.V. stand, mattress



AC20804

### AC20804 MOTORISED CHILD BED

- L1600\*W700\*H630mm
- High quality carbon metal frame
- Equipped with colorful MDF head/foot board
- Slide-down side rails for more convenience
- HI~LO: 630-1300mm
- Backrest tilting: 0~80°
- Optional: I.V. stand, mattress





AC00901

**AC00901 BABY BED**

- L80\*W45\*H80cm
- Made of stainless steel
- 3" castor with brakes



AC00902

**AC00902 BABY BED**

- Height adjustable via gas spring: 78~98cm
- Aluminum column, HI transparent baby basin
- Trenslenburge/anti-trenslenburg function together
- Green, pink and blue ones are available
- Weight scale for optional function



AC00903

**AC00903 BABY BED**

- L80\*W60\*H80cm
- Stainless steel frame
- PP baby basin



AC00904

**AC00904 BABY BED**

- L80\*W60\*H80cm
- Stainless steel frame
- Maximum space using



AC21101

**AC21101 GYNAECOLOGICAL BED**

- L1820\*W550\*H800mm
- Stainless steel frame
- High density foam coated with PU leather



AC21102

**AC21102 GYNAECOLOGICAL BED**

- L1820\*W550\*H800mm
- Stainless steel frame
- High density foam coated with PU leather



AC21103

**AC21103 EXAMINATION COUCH**

- L1900\*W650\*H750mm
- Metal frame with detachable powder-coated leg
- Central metal bar for stronger support and stability
- Padded mattress supported via wood plate





**AC20701 EXAMINATION COUCH**

- Stainless steel frame
- Comfortable padded mattress
- Easy to be lifted via side rail
- Paper roll device equipped

AC20701



**AC20703 ELECTRIC EXAMINATION COUCH**

- L2000\*W600\*H380~650mm
- Backrest tilting: 0~70°
- 5" castor with brakes
- Comfortable padded mattress with fashionable colors

AC20703



AC20702

**AC20702 EXAMINATION COUCH**

- Stainless steel frame with foldable leg
- Foldable legs
- 4 pcs Side bar provide more heavy-duty
- Padded mattress support via Woodplate



AC578A

**AC578A ADJUSTABLE TABLE**

- Two adjustable pole for different reclining and angle
- Laminated table top, size in 63\*46\*1.8cm
- Powder coated base and down pole but chrome up-poles
- Height adjustable from 47-63cm



AC578B

**AC578B ADJUSTABLE TABLE**

- Two adjustable pole for different reclining and angle
- Laminated table top, size in 60\*44\*1.8cm
- Powder coated base and down pole but chrome up-poles
- Height adjustable from 53-83cm



AC578C



**AC578C GAS-SPRING WORKING TABLE**

- Easily assembled
- Walnut, wood grain low pressure laminate top
- Tilted top in either direction of 33°
- Top can be raised or lowered in infinite setting between 67-99cm
- Swivel castors for mobile movement
- Chrome-plated steel H base for stability and security
- Table top would be locked while height adjustment handle is released
- Easily raised top by the slightest upward pressure



AC578E

**AC578E OVERBED TABLE**

- Chromed-coated steel
- H base for extra stability and security
- Swivel castors for mobile movement



AC578D

**AC578D ROTATING TABLE**

- Two parts table with one angle adjustable
- Laminated table top, size in 89\*38\*1.8cm
- Powder coated steel with H base for extra stability and security
- Height adjustable from 73-115cm



## OVERBED TABLE



AC578F

### AC578F OVERBED TABLE( WOOD TOP)

- 900\*450\*720/1020mm
- Noble metal base
- Powder coated steel stand
- Spring gas pole adjustable system



AC578G

### AC578G OVERBED TABLE( PP TOP)

- 900\*450\*720/1020mm
- Noble metal base
- Powder coated steel stand
- Spring gas pole adjustable system



AC578H

### AC578H OVERBED TABLE( PP TOP)

- 80\*44\*62~92cm
- Luxurious aluminum base
- Laminated table top 80\*44\*1.8cm
- Spring gas pole adjustment system



AC578I

### AC578I OVERBED TABLE( PP TOP)

- 80\*44\*62~92cm
- Luxurious aluminum base
- Laminated table top 80\*44\*1.8cm
- Spring gas pole adjustment system

## OVERBED TABLE



AC578J



### AC578J MULTI-FUNCTION TABLE

- Height and angle adjustable for multiple purpose
- Foldable to flat style for easy storage and transportation
- 4\*2' swivel castors with brake
- Table size: 23-5/8"\*15-1/8" (60\*38.5cm)
- Wooden table thickness: 18mm
- Overall width: 60cm
- Overall depth: 17" (43cm)
- Adjustable height: 26"~ 38-1/2" (66~98cm)



AC578K

### AC578K MOBILE UTILITY OVERBED TABLE

- Flat package for easy transport and storage
- Mild steel with powder coating
- Super strong MDF top with different colors
- Height adjustable: 675~1045mm
- Top size: 610\*405mm



AC578L

### AC578L MULTI-FUNCTION TABLE

- Height and angle adjustable table for multiple purpose
- Foldable to flat style for easy storage and transportation
- 2' swivel castors with brake
- Table size: 23-5/8"\*15-1/8" (60\*38.5cm)
- Wooden table thickness: 18mm
- Overall width: 32" (81cm)
- Overall depth: 17" (43cm)
- Adjustable height: 26"~ 38-1/2" (66~98cm)





**ACS01 LUXURIOUS EMERGENCY PATIENT TRANSPORT TROLLEY**

- Size: Vice trolley: 1960\*740\*660mm  
Main trolley: 2080\*720\*780mm
- NW: 133KG, GW: 180KG, 40HQ quantity: 24pcs
- Completed with PP side rails and infusion stand
- The main construction of the cart is shaped by once die-casting of dine aluminum alloy.
- High strength, move steadily and reliably
- Smooth slide for the bed
- Advanced central control brake system for the two parts of the cart.
- The hand-over cart is built on the international level, which could prevent cross infection to satisfy the need of operation requirement

**ACS03 LUXURIOUS TRANSFER STRETCHER**

- Size: 2120\*800\*610~930mm. Package size: 1980\*800\*710mm
- NW:120KG, GW: 140KG, 20GP: 18pcs, 40HQ: 39pcs
- Made of galvanized steel tube and coated by electro-static spray.
- Back board made of American electrotyped board with X-ray cassette,
- Equipped with imported double hydraulic lifting system
- Central brake system
- Dustproof castors make the movement steady, reliable and light.
- Both sides could be titled
- Best choice for emergency room, ICU bed and emergency transporting bed.



**ACS05 HYDRAULIC TRANSFER STRETCHER**

- Size: 1930\*700\*360~930mm, package size: 1960\*740\*650
- NW: 90KG, GW: 117KG
- Equipped with 2-hydraulic pumps ( local and imported pumps are available)
- Central lock system for easy go&stop
- Adjustable height: 630~930mm
- Dustproof castors for steady and smooth movement
- Supported by imported pneumatic spring , easy to operate.

**ACS06 MANUAL TRANSFER STRETCHER**

- Size: 1930\*640\*500~900mm, Package size: 200\*770\*585mm
- NW: 75KG, GW: 102KG
- High strength aluminum frame.
- Central lock system for easy go&stop
- Adjustable height: 500~900mm
- Optional: I.V. pole and mattress



**ACS02 TRANSFER STRETCHER**







**ACS07 ELECTRIC TRANSFER STRETCHER**

- Foldable design, combination of gas spring and cranks powered by electricity
- 4\*150mm castors with central lock system
- Adjustable height: 780~540mm



**ACS08 TRANSFER STRETCHER**

- Foldable design
- Removable bed board which allows to be taken away in cases of emergency
- Stainless steel side rails for extra safety
- 4\*150mm castors with central lock system
- Adjustable height: 845~595mm
- Optional: I.V. pole



**ACS09 PATIENT TROLLEY**

- 1900\*630\*800mm
- Stainless steel frame and PVC leather
- 5" castor with brakes
- I.V. pole



**ACS10 PATIENT TROLLEY**

- 1900\*630\*600~800mm
- Stainless steel frame and PVC leather
- 5" castor with brakes
- I.V. pole



**ACS11 PATIENT TROLLEY**

- 1950\*460\*865mm
- Stainless steel frame and PVC leather
- I.V. pole



**ACS12 FOLDABLE STRETCHER**

- 2120\*550\*130mm(EXTENDED)
- 5800\*140\*240mm(FOLDED)
- Lightweight and durable aluminum frame
- High quality canvas upholstery
- Various colors are available: BLUE, GREEN, BLACK, and NAVY
- Foldable design for easy transportation and storage



**ACS13 FOLDABLE STRETCHER**

- 2050\*530\*130mm(EXTENDED)
- 1020\*170\*80mm(FOLDED)
- Lightweight and durable aluminum frame
- High quality canvas upholstery
- Various colors are available: BLUE, GREEN, BLACK, and NAVY
- Foldable design for easy transportation and storage



## BEDSIDE CABINET/LOCKER



**ACL01**

- 48\*48\*76cm
- Made of ABS
- Towel hanger
- Blue, green and grey ones are available

**ACL02**

- 48\*48\*88cm
- Made of ABS
- Towel hanger
- Blue, green and grey ones are available



**ACL03**

- 48\*48\*88cm
- Made of ABS
- Towel hanger
- Blue, green and grey ones are available



**ACL05**

- 48\*48\*88cm
- Made of ABS
- Towel hanger and cup holder
- Blue, green and grey ones are available

## BEDSIDE CABINET/LOCKER



**ACL06**

- 50\*50\*70cm
- Stainless steel towel hanger
- Made of ABS
- 4\*2" nylon durable castor



**ACL07**

- 47\*45\*72cm
- Stainless steel towel hanger
- Made of ABS
- 4\*2" nylon durable castor



**ACL08**

- 45\*40\*70cm
- Stainless steel construction
- Knock-down design
- Optional: castor



**ACL09**

- 48\*40\*82cm
- Steel frame with plastic top
- Stainless steel towel hanger
- 4\*2" nylon durable castor





ACT01

**ACT01 RECORD TROLLEY**

- Package size (cartoon): 920\*440\*970mm
- Made of ABS plastic
- High quality castors with brakes



ACT02

**ACT02 RECORD TROLLEY**

- Various types are available, which differ in the quantity of file holders(25~60pcs)



ACT03

**ACT03 MEDICINE TROLLEY**

- 760\*585\*1010mm
- 3 drawers
- 42pcs case-history folder
- 1 garage bin and plate
- Central column lock system
- Different medicine boxes are equipped for various purpose
- High quality 5" castors with brakes



ACT05

**ACT05 MEDICAL TROLLEY**

- 780\*610\*960mm
- One ABS plastic top with arc handle and raised edge design
- Two columns, 4 small, 1 medium size, 1 big drawer
- Equipped with dividers, easy to be organized.
- Storage box, dust basket, centralized lock, noise proof castors, and label cards.

**ACT07 EMERGENCY TROLLEY**

- 780\*610\*960mm
- ABS top board with arc handle and raised edge design
- Four columns, 5 drawers with dividers, of which, 2 small, 2 medium, 1big.
- Sliding side shelf, dust basket, needle disposal holder, I.V. pole defibrillator shelf oxygen tank holder.
- CPR board, power outlet&hooks utility container, Storage box.
- Noise-proof castors with brake



ACT07



A

ACT06

B

**ACT06A/B MEDICINE TROLLEY**

- 850\*520\*1010mm
- 6 drawers which could be used on both sides
- 50 medicine box
- 2 garage bins with lid, 1 transparent file case
- 1 sliding board and 1 adjustable I.V. pole
- High quality 5" castors with brakes





ACT08

ACT08 CURE TROLLEY



ACT09

ACT09 I.V. TREATMENT TROLLEY

- 750\*600\*965mm
- ABS top with raised edge design
- 4 columns, 1 drawer with dividers, can be easily organized
- Dust basket, I.V. pole, storage box, stainless steel guard rails.
- Noise-proof castors with brake
- Label cards



ACT10

ACT10 ANAETHESIA TROLLEY

- 950\*755\*970mm
- ABS plastic top board with arc handle and raised edge design
- 4 columns, 1 drawer with dividers, can be easily organized
- Dust basket, storage box, Multi-bin container, stainless steel guard rails.
- Centralized lock
- Noise-proof castors with brake
- Label cards
- Optional: writing shelf



ACT11

ACT11A/B HAND TROLLEY



ACT12

ACT12 DRESS TROLLEY

- 700\*460\*860mm
- Completely made of stainless steel



ACT13

ACT13 DRESS TROLLEY

- A:1550\*460\*865mm B:1400\*460\*865mm
- C: 1200\*460\*865mm
- Completely made of stainless steel



ACT15

ACT15 INSTRUMENT TROLLEY

- 540\*430\*880mm
- Completely made of stainless steel



ACT16

ACT16 INSTRUMENT TROLLEY

- 700\*460\*860mm
- Completely made of stainless steel



ACT17

ACT17 INSTRUMENT TROLLEY

- 700\*460\*860mm
- Completely made of stainless steel



ACT18

ACT18 INSTRUMENT TROLLEY

- A: 800\*470\*865mm B: 670\*440\*865mm
- C: 600\*420\*865mm
- Completely made of stainless steel

ACT19 WATER TROLLEY

- 800\*470\*900mm
- Completely made of stainless steel



ACT19





ACT20

**ACT20 SINK TROLLEY**

- A: 800\*470\*865mm
- B: 670\*440\*865mm
- C: 600\*420\*865mm
- Completely made of stainless steel



ACT22

**ACT22 ANESTHESIA TROLLEY**

- A: 550\*480\*860mm
- B: 460\*400\*860mm
- Completely made of stainless steel



ACT23

**ACT23 CLEAN TROLLEY**

- 1050\*475\*980mm
- Completely made of stainless steel



ACT26

**ACT26 DISINFETOR TROLLEY**

- 1000\*500\*990mm
- Completely made of stainless steel



ACT21

**ACT21 CLEAN TROLLEY**

- 600\*600\*800mm
- stainless steel frame



B A

**ACT25 CLEAN TROLLEY**

- A:  $\varnothing$  550\*800mm
- B: 550\*550\*800mm
- stainless steel frame



ACT27

**ACT27 RESCUE TROLLEY**

- 630\*400\*915mm
- Completely made of stainless steel



**ACMC01 WAITING CHAIR**

- Steel frame with chrome finish
- Molded backrest with air holes
- Seat width: 670mm
- Seat height: 440mm
- Back height: 360mm
- Options: 2,3 or 4 seats, padded seat and backrest



**ACMC02 WAITING CHAIR**

- Steel frame with chrome finish
- Molded backrest with air holes
- Seat width: 670mm
- Seat height: 440mm
- Back height: 360mm
- Options: 2,3 or 4 seats, padded seat and backrest



**ACIC01 INFUSION CHAIR**

- Powder-coated metal frame
- High density upholstery offers comfortable seats
- Wood hand rests
- Options: 2,3 or 4 seats





**ACMC03 VISITOR CHAIR**

- Powder-coated steel frame
- High density comfortable seat cushion
- Foldable design with removable castors
- 2150\*700\*600mm



**ACMC05 WAITING CHAIR**

- Stainless steel frame
- High density comfortable seat cushion
- Foldable design with removable castors
- 2100\*620\*600mm



**ACIC02 RECLINING INFUSION CHAIR**

- Metal frame with reclining design and I.V. pole
- High density comfortable seat cushion
- Wide arm rests
- Adjustable backrest enables the patient to lie down



**ACIC03 INFUSION CHAIR**

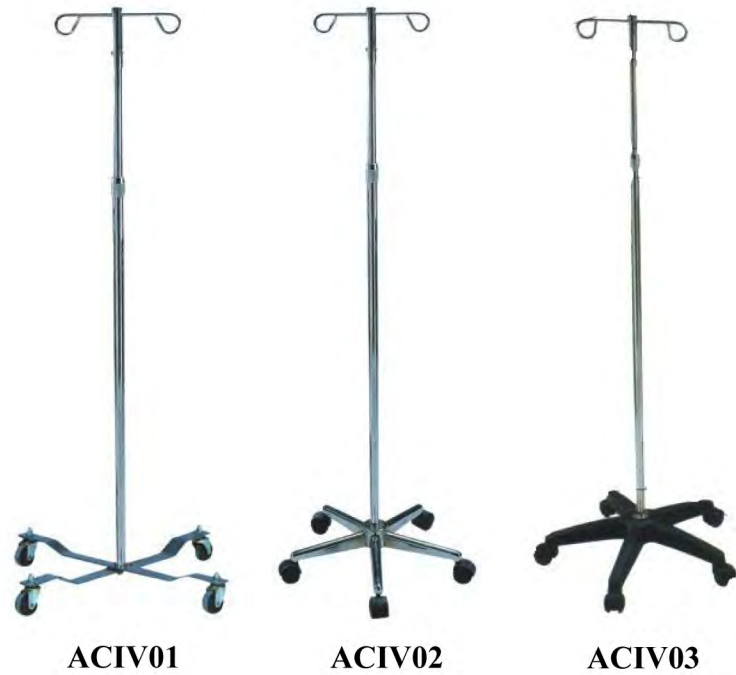
- Stainless steel frame with I.V. pole
- High density comfortable seat cushion
- Wide arm rests
- Equipped with footrest
- Side holders for bag or bottle loading



**ACIC05 INFUSION CHAIR**

- Powder-coated metal frame
- High density comfortable seat cushion
- Wide arm rests
- Adjustable backrest enables the patient to lie down





**ACIV01 I.V. STAND**

- 4 nylon castors provide smooth transport and maneuverability
- Removable hooks make this economy I.V. pole versatile
- Easily converted to 2 hook or 4 hook with easy to release push pin
- Powder-coated steel with weighted base provides strength, durability and reduces risk of tipping.

**ACIV02/03 I.V. STAND**

- Chrome-plated steel pole provides strength and durability
- Non-breakable composite 5-leg base and 5 swivel ball bearing castors provide easy, smooth maneuvering on all surfaces.
- Easily converted to 2 hooks or 4 hooks with easy-to-release push-pin



**ACIS01 INSTRUMENT STAND**

- L450\*W350\*H950~1300mm
- Stainless steel frame, knock-down design
- Stainless steel tray
- 3" castors



**ACIS02 INSTRUMENT STAND**

- Removable stainless steel tray, size: 490\*340\*25mm
- Adjustable height: 736~1117mm
- Castors for additional mobility and convenience



**ACIS03 INSTRUMENT STAND**

- Single post with U-shape base
- Adjustable height: 810~1270mm
- 2" nylon castors



**ACIS05 INSTRUMENT STAND**

- L600\*W400\*H950~1300mm
- Stainless steel frame with knock-down design
- Stainless steel tray
- 3" castors



ACIS06

**ACIS06 INSTRUMENT STAND**

- Double posts for extra support while used in surgical procedures
- Removable stainless steel tray, size:490\*340\*25mm
- Adjustable height: 860~1390mm
- 2" nylon castors



ACMB01



ACMB02



ACWS01

**ACWS01 WASH STAND**

- L840\*W374\*H735mm
- Stainless steel frame, knock-down design
- Two stainless steel basin,  $\varnothing$  320mm
- 3" castors



ACWS03

**ACWS03 WASH STAND**

- L445\*W374\*H735mm
- Stainless steel frame, knock-down design
- Stainless steel basin  $\varnothing$  320mm
- 3 " castors

**ACKB01 KICK BUCKET**

- Various volume is available



ACKB01





ACW01

**ACW01 FOLDABLE WARD SCREEN**

- 2, 3 and 4 panels available
- Non-magnetic material
- Foldable panels, 60cm wide each
- Fabric is washable and flame retardant curtains for each section
- DIA 50mm swivel castors
- 3-folding size: H175cm\*W184cm
- 4-folding size: H175cm\*W245cm



ACW03

**ACW03A/B STOOL**



ACW02

**ACW02 BACKREST**

- 63\*46\*61cm
- Washable fabric with different colors available
- 5-position adjustable
- Attached with a small pillow



ACW05

**ACW05A/B STOOL**



ACW06

**ACW06 STAINLESS STEEL STOOL**



ACW07

**ACW07 STOOL**

- Reinforced nylon base with 5 feet
- Gas lift, height adjustable: 490~680mm
- Comfortable chair with imitation leather upholstery filled with 50mm thick high density foam
- Knock-down design



ACW09

**ACW09 DETACHABLE PEDAL EXERCISE**



ACW08

**ACW08 STEPPER**

- Different steppers available(1,2,3)
- Metal frame with powder-coating (optional: stainless steel)
- Solid pad with rubber cover
- Durable and non-slip rubber tips



ACW10

**ACW10 EXERCISE PEDDLER**

- Heavy duty with chrome steel frame
- Smooth pedal movement
- Base size: 510\*440mm
- Adjustable height: 950~1070mm



ACOC01



ACOC02



ACOC03



ACOC05





**ACCB01 APPLIANCE CUPBOARD**

- L900\*W400\*H1750mm
- Made of stainless steel
- Knock down construction
- 2 lockable glass doors, 6 adjustable shelves



**ACCB02 APPLIANCE CUPBOARD**

- L900\*W400\*H1750mm
- Made of stainless steel
- Knock down construction
- 2 lockable glass doors and drawers, 5 adjustable shelves



**ACCB03 APPLIANCE CUPBOARD**

- L900\*W400\*H1750mm
- Made of stainless steel
- Knock down construction
- 2 lockable glass doors and drawers, 4 adjustable shelves



**ACCB05 APPLIANCE CUPBOARD**

- L900\*W400\*H1750mm
- Made of enameled steel sheet
- Knock down construction
- 2 lockable glass doors, 2 adjustable shelves



**ACCB06 APPLIANCE CUPBOARD**

- L900\*W400\*H1750mm
- Made of enameled steel sheet
- Knock down construction
- 2 lockable glass doors, 4 adjustable shelves



**ACCB07 APPLIANCE CUPBOARD**

- L900\*W400\*H1750mm
- Made of enameled steel sheet
- Knock down construction
- 2 lockable glass doors and drawers, 3 adjustable shelves



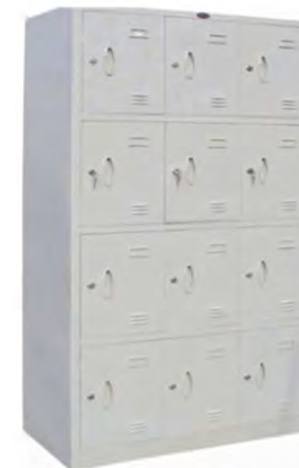
**ACCB08 WORKING TABLE**

- L1600\*W700\*H1600mm
- Stainless steel base and top



**ACCB09 WORKING TABLE**

- L1800\*W700\*H800mm
- Stainless steel base and top



**ACCB10 SHOE CUPBOARD**

- L900\*W400\*H1850mm
- Metal material with epoxy coating
- 12pcs cabinets



**ACCB11 STORAGE FRAME**

- Stainless steel frame
- 4pcs shelves



**ACCB12 STORAGE FRAME**

- L900\*W400\*H1850mm
- Metal material with epoxy coating
- 3pcs cabinets



**ACCB13 CLOTH CUPBOARD**

- L900\*W400\*H1850mm
- Metal material with epoxy coating
- 6pcs cabinets

**ACCB15 CLOTH CUPBOARD**

- L900\*W400\*H1850mm
- Metal material with epoxy coating
- 9pcs cabinets







ACM01



ACM02



ACM03



ACM05



ACM06

STANDARD SIZE: 1900\*900\*80mm, customization accepted. High density sponge for comfort, and clean washable cover.



**ACM07 AIR-DECUBITUS MATTRESS**

- L2000\*W870\*H110mm
- The feature of bedside remedy air mattress (air-jet type) is the tiny holes on the surface for decreasing humidity in bedding, and replace the foul air and control the growth of microbes, it can effectively prevent the bedsores from dispersing by the weight of patient's body. It is specially made for the patients who are suffering and bothering by long-term bed ridding, also with less labor for nursing people



**ACM08 AIR-DECUBITUS MATTRESS**

- L2000\*W900\*H60mm
- This therapy system is designed for these with superficial Established pressure sore or with existing tissue damaged, or assessed to be a low risk or be at medium risk, even at very high risk of pressure sore development, it can provide excellent pressure reduction through continuous movement. It has been proven clinically beneficial and suitable for all healthcare environments.



ACB01 HEAD/FOOT BOARD 900mm



ACB02 HEAD/FOOT BOARD 900mm HOLLOW



ACB03 HEAD/FOOT BOARD 900mm



ACB05 HEAD/FOOT BOARD 900mm



ACB06 HEAD/FOOT BOARD 900mm



ACB07 HEAD/FOOT BOARD 920mm



**HEAD/FOOT BOARD**

**SIDE RAIL**



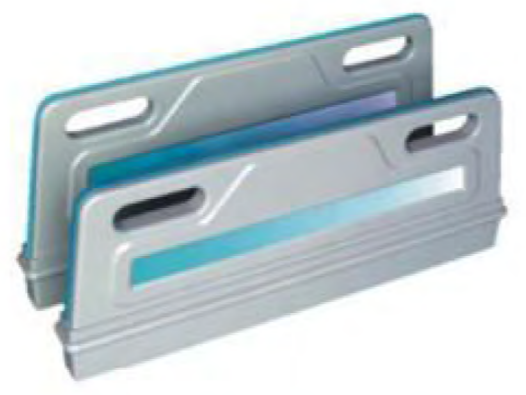
**ACB08 HEAD/FOOT BOARD 920mm**



**ACB09 HEAD/FOOT BOARD 920mm**



**ACB10 HEAD/FOOT BOARD 920mm**



**ACB11 HEAD/FOOT BOARD 950mm**



**ACB12 HEAD/FOOT BOARD 920mm**



**ACB13 HEAD/FOOT BOARD 1050mm**



**ACSR01 SIDE RAILS**



**ACSR05 SIDE RAILS**



**ACSR02 SIDE RAILS**



**ACSR06 SIDE RAILS**



**ACSR07 SIDE RAILS**



**ACSR03 SIDE RAILS**



**ACSR08 SIDE RAILS**





ACSR09 SIDE RAILS

- Aluminum frame
- ABS pushbutton
- A: 950mm
- B: 1300mm
- C: 1500mm



ACSR10 SIDE RAILS

- Aluminum frame
- ABS pushbutton
- A: 950mm
- B: 1300mm
- C: 1500mm



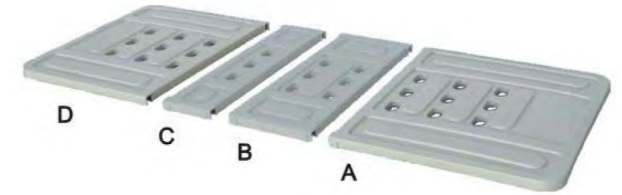
ACSR11 SIDE RAILS



ACSR12 SIDE RAILS



ACBB01 SOFT CONNECTION 830mm

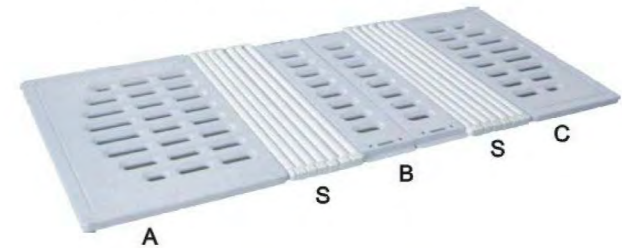


ACBB02 BED SURFACE 830mm

- A: 830\*710mm
- B: 830\*300mm
- C: 830\*190mm
- D: 830\*630mm

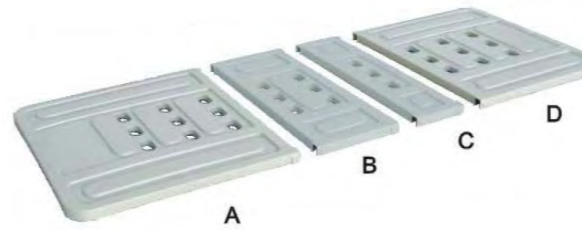


ACBB03 SOFT CONNECTION 900mm



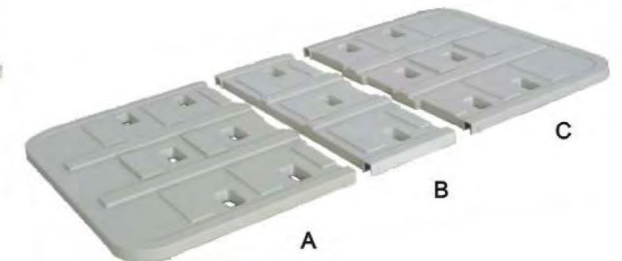
ACBB05 BED SURFACE 900mm

- 900\*600mm
- 900\*190mm
- 900\*410mm
- 900\*270mm



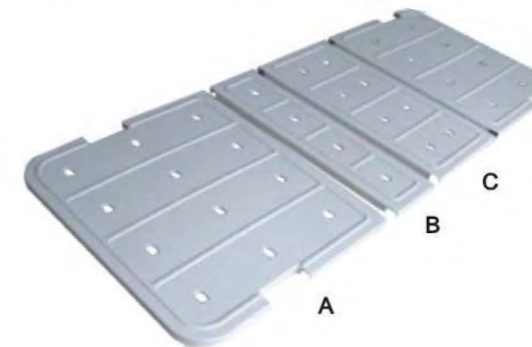
ACBB06 BED SURFACE 900mm

- A: 900\*710mm
- B: 900\*300mm
- C: 900\*190mm
- D: 900\*630mm



ACBB07 BED SURFACE 900mm

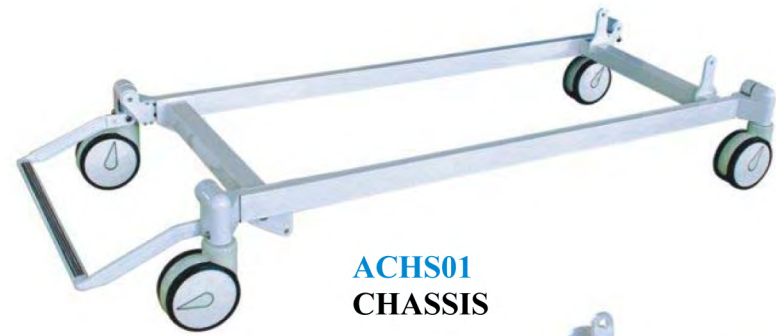
- A: 920\*680mm
- B: 920\*300mm
- C: 920\*680mm



ACBB08 BED SURFACE 900mm

- A: 770\*670mm
- B: 770\*200mm
- C: 770\*220mm
- D: 770\*370mm

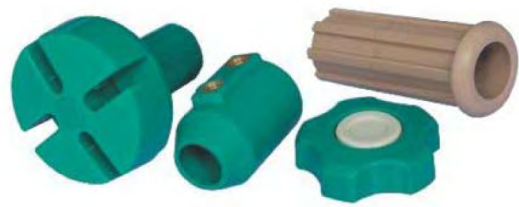




**ACHS01**  
CHASSIS



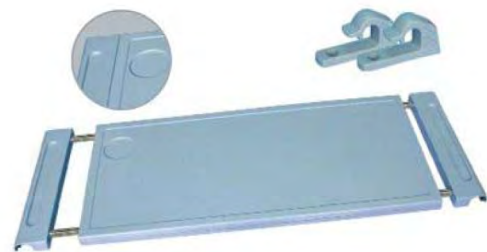
**ACHS02**  
CHASSIS



**ACHS03**  
Accessories to I.V. pole



**ACHS05**  
Protective bumpers



**ACHS06**  
Flex table board



**ACHS07**  
Ornamental parts for head board



**ACHS08**  
Table board



**ACHS09**  
Accessories to crank



**ACHS10**  
Decorative strips



**ACHS11**  
Foot board



**ACHS12**  
I.V. pole



**ACHS13**  
Crank



**ACHS15**  
Baby basin

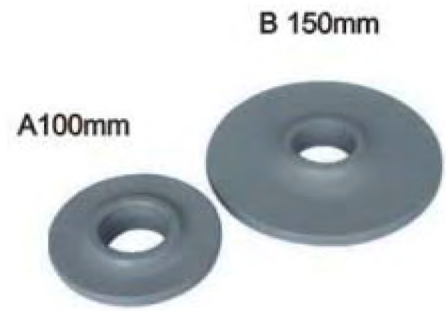


**ACHS16**  
Case history folder





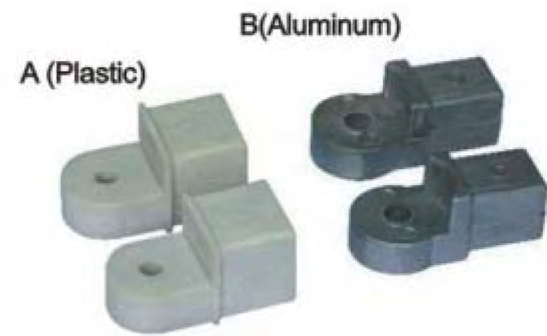
**ACHS17**  
MONKEY POLE



**ACHS18**  
Corner bumpers



**ACHS20**  
ABS top to cabinet



**ACHS19**  
Connectors



**ACHS22**  
Spine board



**ACHS21**  
Head immobilizer



**ACHSC01**

**ACHSC02**

**ACHSC03**



**ACHSC05**

**ACHSC06**

**ACHSC07**



**ACHSC08**

**TPR**

**5" Bed Castor**

**Luxury Castor**

**PVC**