

## *The Company*

Technology Co., Ltd is one of leading high-tech industry which has been well working on the facilities agriculture engineering design, produce, installation, marketing, after-sales service. Our series products with its reliable quality, excellent performance, well-measure to local condition design scheme, good enterprise image, quality customer service, have met our customer requirement and deeply won their trust and high praise; meanwhile, we have set up superior marketing network in China. Companies adhering to the principle of high starting point high efficiency, guarantee to meet the same service standard and also the advanced and practical of the worldwide in agriculture facilities. Through the development of the high speed steady in recent years,

with its strong technical research and development ability, mature project management experience, and its excellent after-sales and extension service, remarkably becomes the most famous brand in greenhouse industry.



**Established**

14<sup>th</sup> May, 2007

**Number of Employees**

32

**Net Sales**

RMB 38.5 Million

**Head Office**

Beijing, China

**Manufactory**

Beijing, China

**Propose of Business**

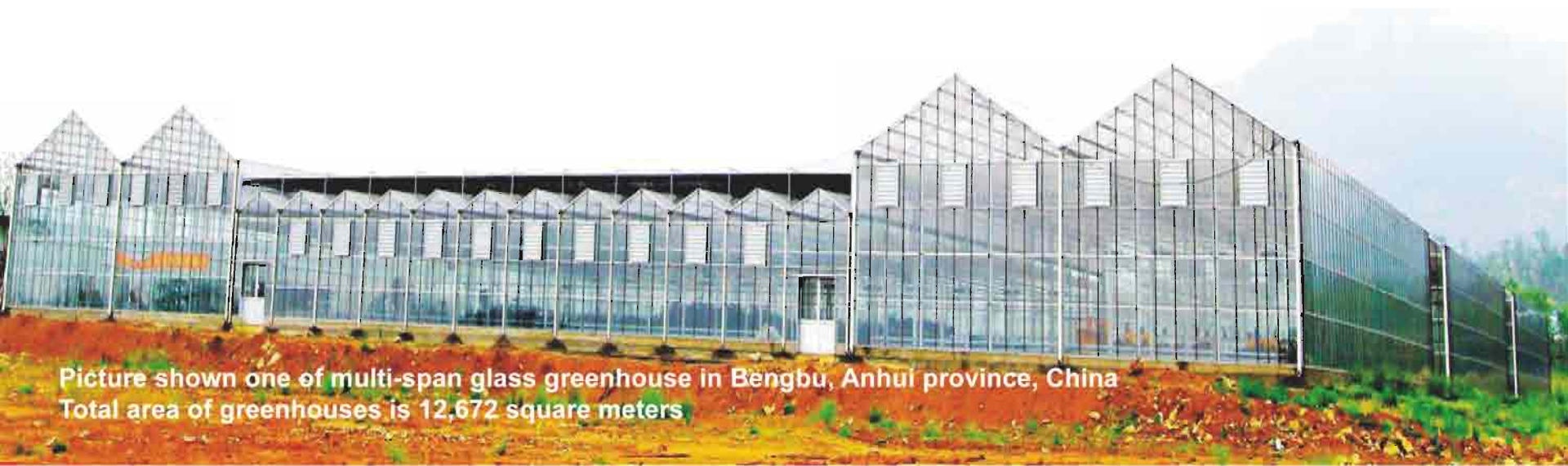
Greenhouse construction project, management, greenhouse, engineering design, professional contracting, greenhouse technology development, greenhouse technology consulting, greenhouse structure manufacture, greenhouse installation, greenhouse Sales and after-sales service



# *Representative Projects in China*

## **Glass Greenhouse**

greenhouse has the best light transmittance in the series of greenhouse. The transmittance of single layer glass greenhouse up to 90%, the double glazing is 84%. Venlo, small roof, glisten those features not only make the greenhouse a good appearance, also provide high efficiency for users. After years of optimized design, with high quality material, advanced technique, competitive price, our glass greenhouse becoming developed high-tech products in modern agriculture.



Picture shown one of multi-span glass greenhouse in Bengbu, Anhui province, China  
Total area of greenhouses is 12,672 square meters



## Glass Greenhouse Parameters

Covering	4mm, 5mm single layer glass; double layer or double glazing
Span / M	6.4 / 8.0 / 9.6 / 12
Column height / M	3.0 ~ 6.0
Section / M	4.0 / 4.5
Zenithal Ventilation	Interlacing / Full-opened
Lateral Ventilation	Sliding / Top-hung

Picture shown one of multi-span larger glass greenhouse in Bayannaoer City, Inner Mongolia province, China  
Total area of greenhouse is 10,368 square meters

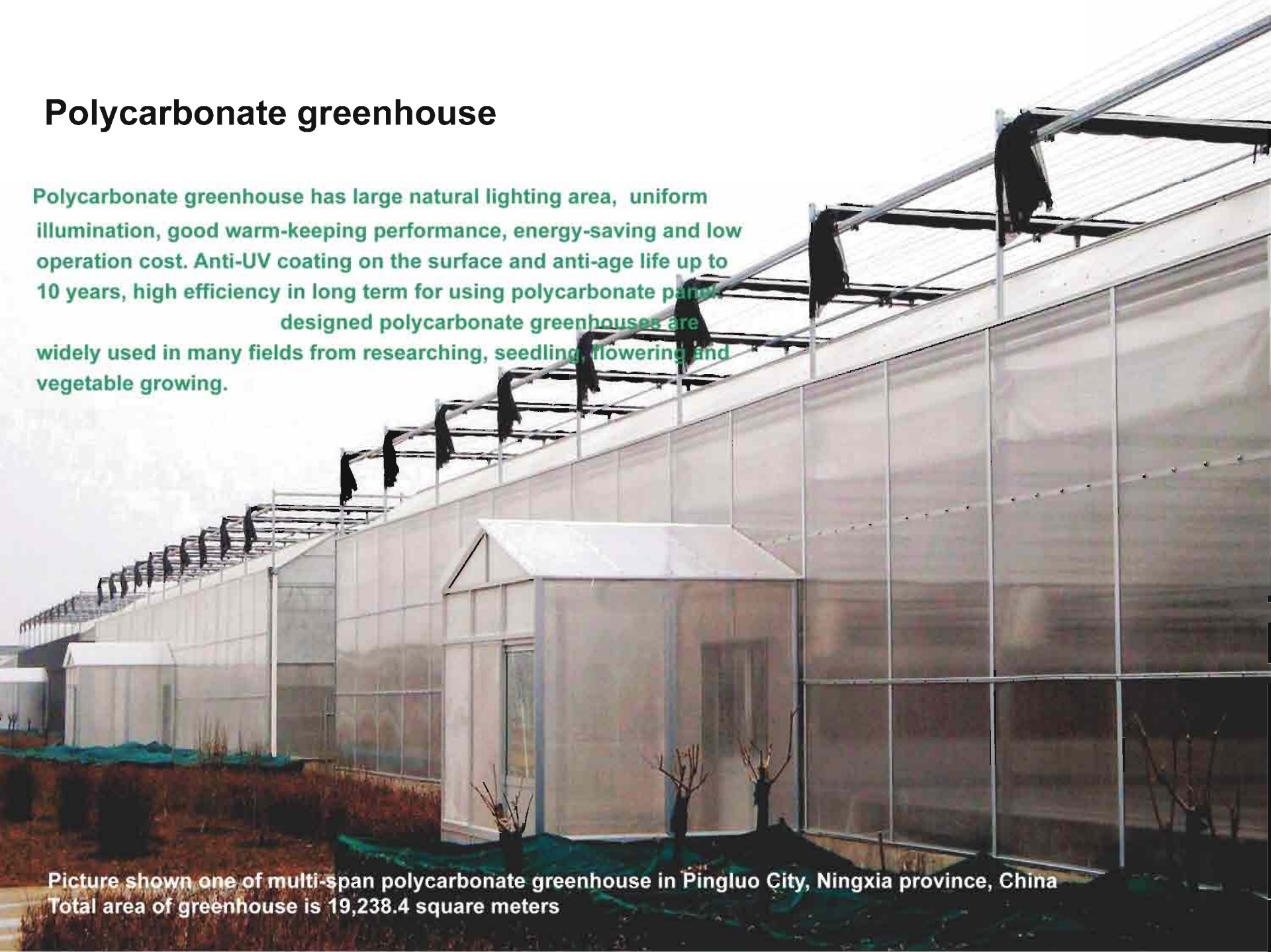
# Glass-polycarbonate Greenhouse

The features of using polycarbonate panels as roof cover material including temperature resistance and impact resistance. Four sidewall of single layer create a very good light transmittance environment for the crops and plants.

Picture shown one of multi-span glass-polycarbonate greenhouse in Xiji City, Ningxia province, China  
Total area of greenhouse is 16,512 square meters

# Polycarbonate greenhouse

Polycarbonate greenhouse has large natural lighting area, uniform illumination, good warm-keeping performance, energy-saving and low operation cost. Anti-UV coating on the surface and anti-age life up to 10 years, high efficiency in long term for using polycarbonate panels. designed polycarbonate greenhouses are widely used in many fields from researching, seedling, flowering and vegetable growing.



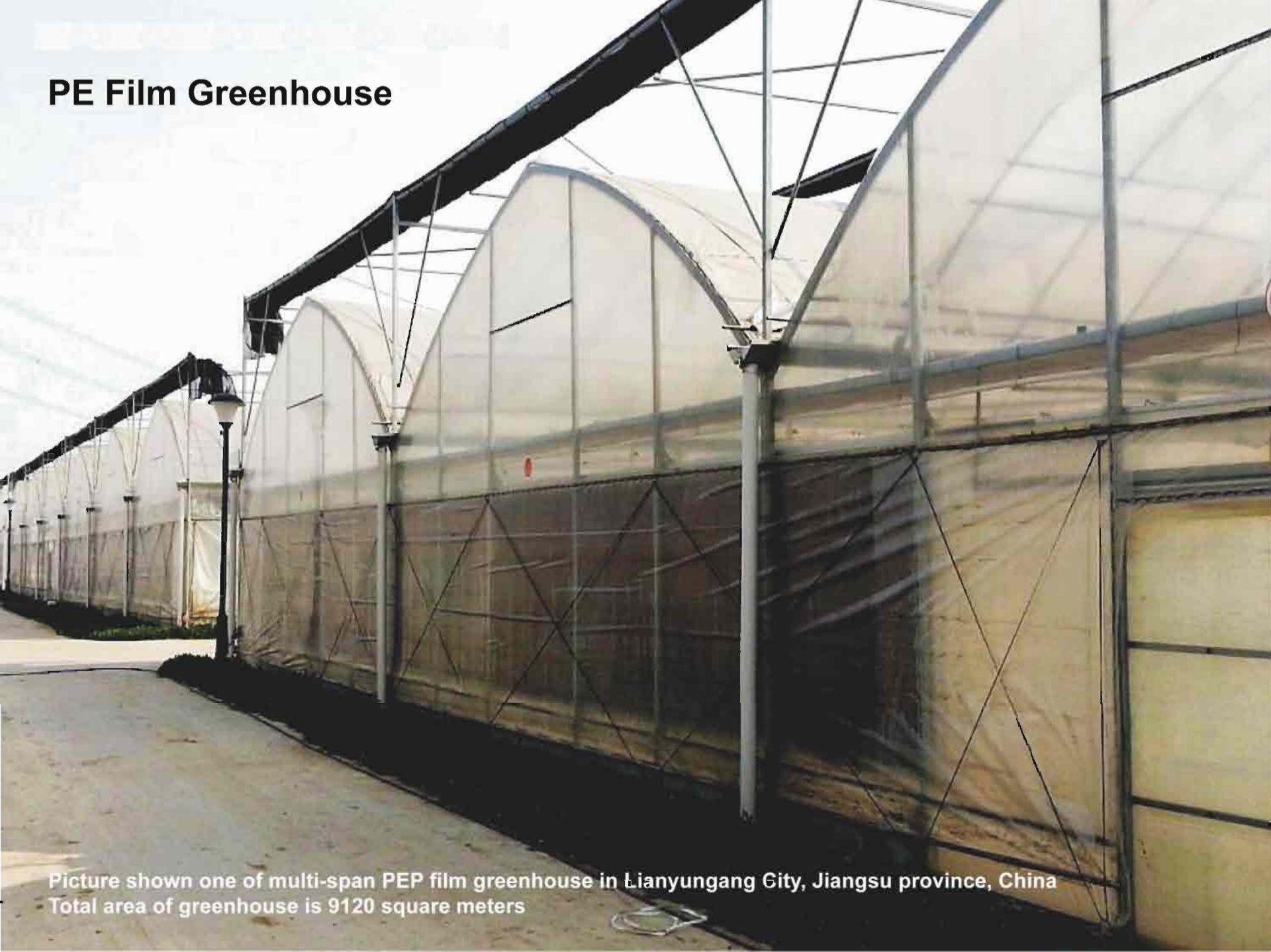
Picture shown one of multi-span polycarbonate greenhouse in Pingluo City, Ningxia province, China  
Total area of greenhouse is 19,238.4 square meters

## Polycarbonate greenhouse Parameters

Covering	8mm, 10mm polycarbonate panel
Span / M	6.4 / 8.0 / 9.6 / 10.8 / 12 / 16
Type / shape	Venlo, arch
Column height / M	3.0 ~ 6.0 ( OEM provided)
Section / M	4.0 / 4.5 / 5.0 / 8.0
Zenithal Ventilation	Interlacing / Full-opened
Sidewall ventilation	Sliding / Top-hung

Picture shown one of multi-span polycarbonate greenhouse in Pingluo City, Ningxia province, China  
Total area of greenhouse is 19,238.4 square meters

## PE Film Greenhouse

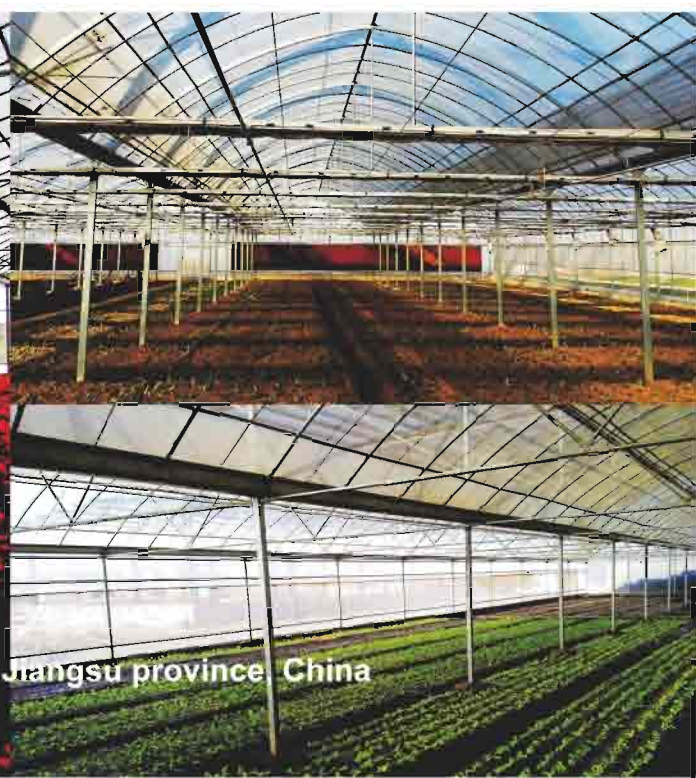


Picture shown one of multi-span PEP film greenhouse in Lianyungang City, Jiangsu province, China  
Total area of greenhouse is 9120 square meters

# Multi-span Single Layer PE Film Greenhouse

## Plastic Film Greenhouse Parameters

Covering Material	PEP (Single layer / Double layer)
Span / M	6.4 / 8.0 / 9.6 / 10.8
Type / Shape	Arch
Column / M	3.0 ~ 6.0
Section / M	4.0 / 4.5 / 5.0
Zenithal Ventilation	Film roll up ( Manually or automatically ), rack & pinion
Lateral Ventilation	Film roll up ( Manually or automatically ), rack & pinion



Picture shown one of multi-span PEP film greenhouse in Lianyungang City, Jiangsu province China  
Total area of greenhouse is 9120 square meters

# Saw Tooth Plastic Film Greenhouse

## Greenhouse Parameters

Covering Material

PEP (Single layer / Double layer)

Span / M

6.4 / 8.0 / 9.6 / 10.8

Type / Shape

Saw Tooth

Column / M

3.0 ~ 6.0

Section / M

4.0 / 4.5 / 5.0

Zenithal Ventilation

Film roll up ( Manually or automatically ), rack & pinion

Lateral Ventilation

Film roll up ( Manually or automatically ), rack & pinion



## Energy-saving Greenhouse

Energy-saving greenhouse has remarkable warm-keeping capability and energy-saving performance, lower cost and higher efficiency of land utility. Fine agronomy effect-easy to form micro-environment. It is widely used in Northern China.



Picture shown one of multi-span Energy-saving polycarbonate greenhouse in Hangjinqi City, Inner Mongolia province, China

Total area of greenhouse is 10000 square meters

Structure

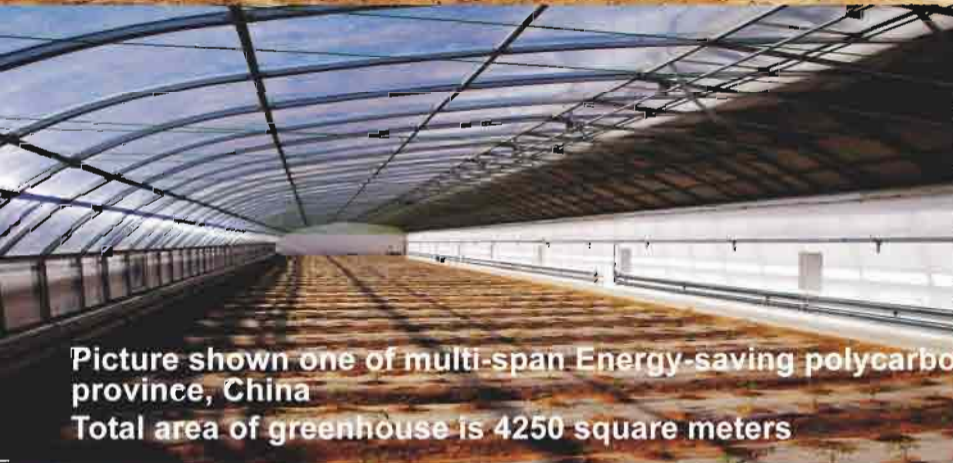
Welded structure and prefabricated structure

Covering:

Plastic film / Polycarbonate panel

Span width/ M

6.5 / 7.0 / 7.5 / 8.0 / 9.0 / 9.5 / 10.0



Picture shown one of multi-span Energy-saving polycarbonate greenhouse in Hangjinqi City, Inner Mongolia province, China

Total area of greenhouse is 4250 square meters

# The Eco-type Restaurant / Park Greenhouse

The Eco-type restaurant is the additional application of greenhouse, which compromises the merits of greenhouse and natural landscape, provide people leisure, green, and healthy dining environment. The ecotype restaurant can realize spring whole year through adjust the temperature and humidity. The ecotype restaurant is becoming popular in the recent years.

Ecotype park greenhouse is an artificially green-themed indoor park, which can provide people a green nature environment even in winter. People can enjoy the pure air in the park, which improves taste and quality of people's life. Greenhouse can also be expended as ecotype meeting room, ecotype hotel and ecotype Spa.



Picture shown one of multi-span Eco-type glass restaurant in Qingdao City, Shandong Province, China  
Total area of greenhouse is 4608 square meters

# Double Layer inflated Plastic Film - Polycarbonate Greenhouse

Project completed in Japan, 2011

Top material: double layer inflated plastic film

Four sidewall: 10mm polycarbonate panel

Feature: Simple structure, low cost and low operation cost.

Inflated air between two films by the pump, an insulation layer

Will be formed. It created a small climate in the greenhouse

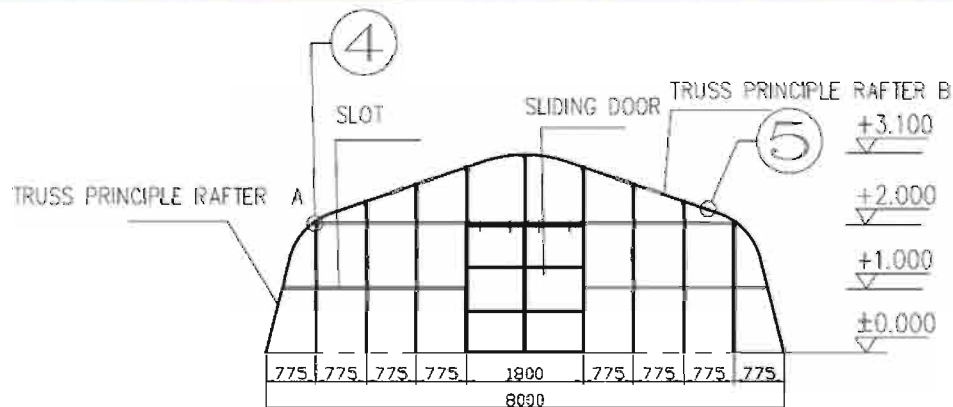
And the interior temperature can be controlled easily.



# Tunnel Greenhouse

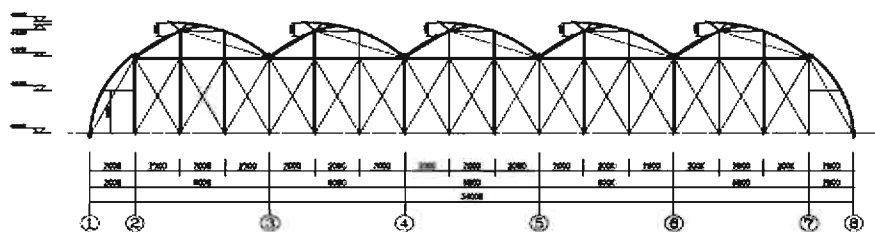
Project completed in Tampa, Florida, United States In 2014

Gutter height / M	1.0~1.5m
Ridge height / M	2.8~3.5m
Span / M	6.0 / 8.0 / 10.0 / 12.0
Feature	Simplest structure and lowest cost, use in warm area

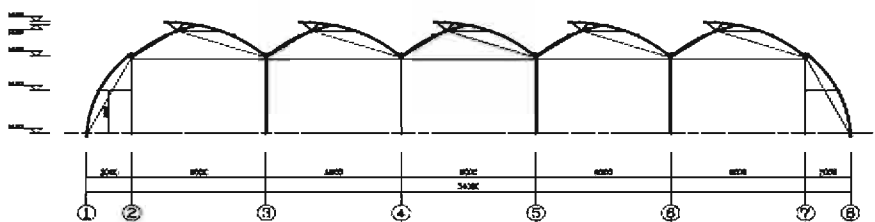


<b>Span width</b>	<b>6m</b>
<b>Gutter Height</b>	<b>4m</b>
<b>Top Height</b>	<b>5.8m</b>
<b>Zenithal Vent Height</b>	<b>683mm</b>

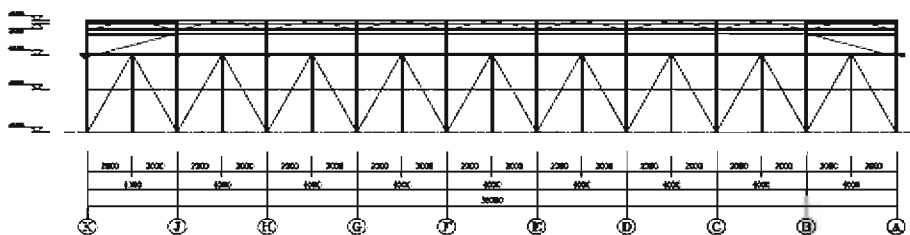
<b>Span width</b>	<b>6m</b>
<b>Gutter Height</b>	<b>4m</b>
<b>Top Height</b>	<b>5.8m</b>
<b>Zenithal Vent Height</b>	<b>683mm</b>



溫室北立面



(E)-(E)轴剖面



温室东立面



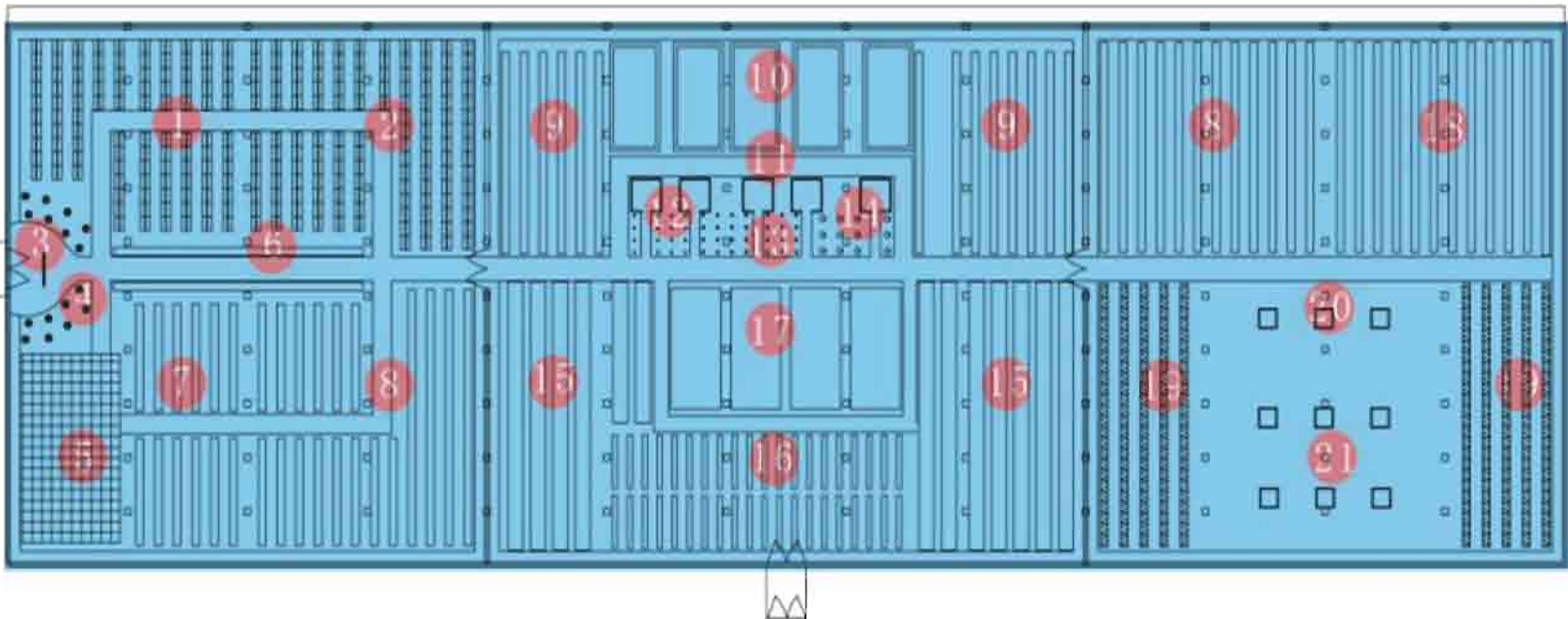
# Hydroponic System

Below shown the type of hydroponic system

There are simple bag culture, modern bag culture, wall culture, column culture, tunnel net culture, spread culture, net culture, stereo leaf vegetable culture, float culture, stereo water culture, folding bowl culture, tomato tree culture, triangle column culture, auger type column culture, DFT water culture, stereo semicircle pipeline, semicircle pipeline, olastic trench type culture, composite culture, sweet potato culture,



# Hydroponic System Layout



10漂浮培



11漏窗式立体水培



12叠碗式立柱栽培



## Something about soilless cultivation (Hydroponic system)

- Hydroponic It can prevent (or reduce) due to the soil of continuous cropping obstacle, effectively solve the problem of heavy soil borne diseases. For some special crops, enable to multi cropping and stereo cultivation in any height, improving land utilization rate, increase the yield per unit area.
- No land quality limitation. No matter how soil physicochemical properties, soil moisture, still be able to cultivate.
- Higher efficiently using fertilizer, thus result in high yield of outcome, good quality crops, no pollution, and high commodity rate. Such as tomato, its products not only have good appearance (shape and color), and content of vitamins and minerals has increased, vitamin C content increase 30%, vitamin A content increased slightly, mineral content increased doubled.

Remarkably water saving which can effectively curb water crisis. Because of soilless cultivation, there is no irrigation water to the soil leakage problems, soilless cultivation of water use is only a part of the water absorption and evaporation plant, water use in much less than the soil cultivation. A type of soilless cultivation is called Aerosol cultivation, it is a feasible solution to the contradiction of all forms of water root in soilless culture technology, at the same time it also easy automation control and stereo cultivation, improve the utilization rate of greenhouse space, also its higher water saving performance. Aerosol cultivation only use 1/20 of water of traditional soil cultivation to accomplish the same biomass growth, water saving efficiency is 90% more.

# Honesty & Quality & Professional

