

# COMPANY PROFILE

Co.,Ltd is a professional manufacturer of housing solution with over 12 years experience, which now has more than 1,200 workers, and covers areas of around 32,000 square meters. We provide planing, designing, producing and installing service on all Prefab Houses, such as Flat Pack Container House, Prefabricated Containter House, Folding Container House, Expandable Container House, Portable Toilet, Steel Structure House, Light Steel Villa etc.

Think what customer think is our philosophy.

You give us a piece of land, we will return a perfect building to you.



### CE/ISO CERTIFICATIONS

International Quality Control System



### PROFESSIONAL TEAM

Integration Services of Design Production, Sales, Installation



### ON TIME DELIVERY

Lead Time is around 15-20 Days after Received the Deposit



### FACTORY MANUFACTURE

100% Manufacturer Not Trading Company



### FREE FORMER

Providing 1000+ Former Cases as the Reference



### LONG LIFE SPAN QUALITY

At Least With 30 Years Life-Span

### OUR MISSION

- Pursuit of Customer's Value
- Pursuit of Company's Development
- Pursuit of Employee's Future

### OUR VISION

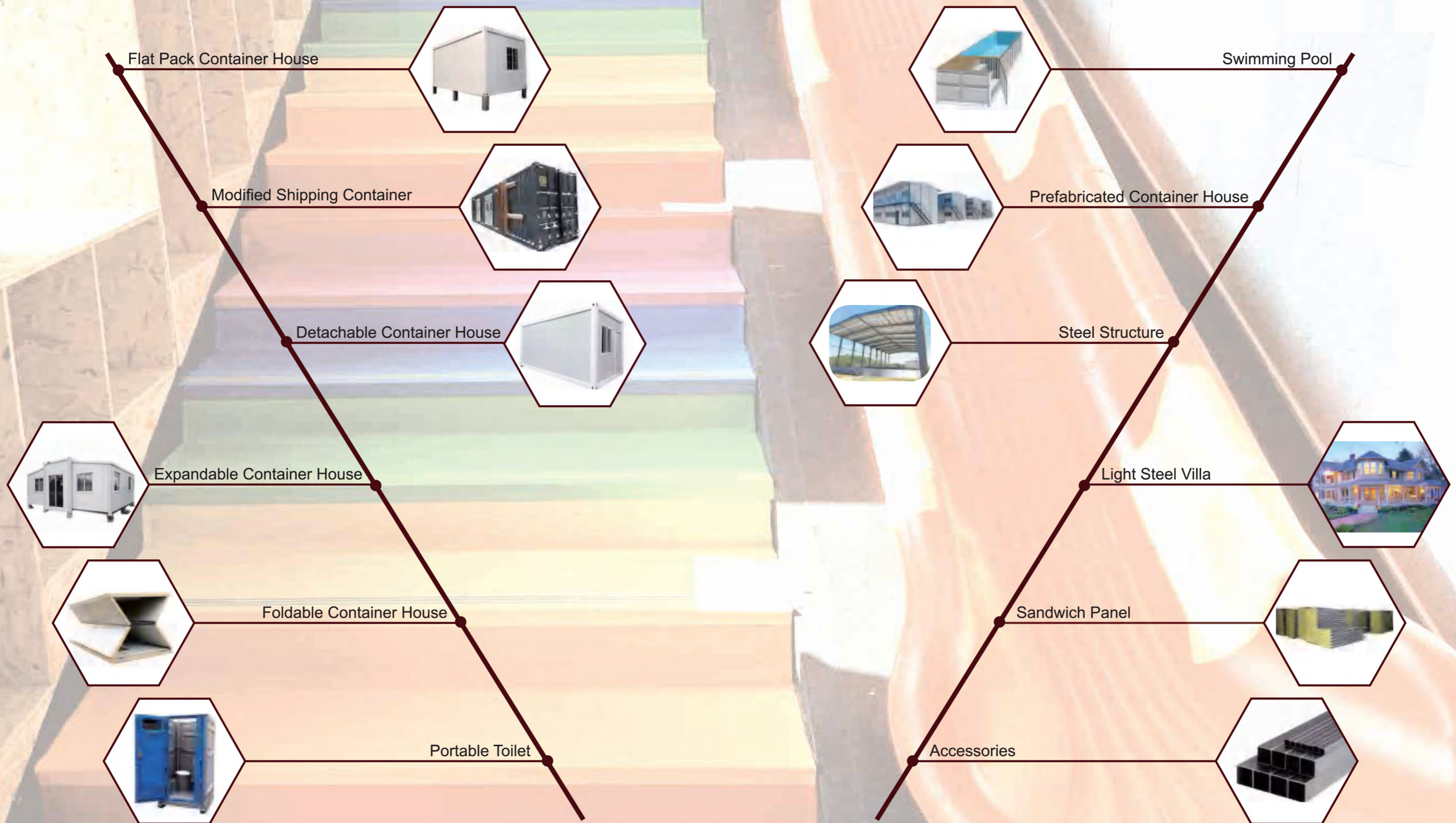
- Growing as the Leading One-Stop Container World

### OUR VALUE

- Keep The Initial Heart
- Embrace the Change
- Deliver Happiness
- Protect Our Planet



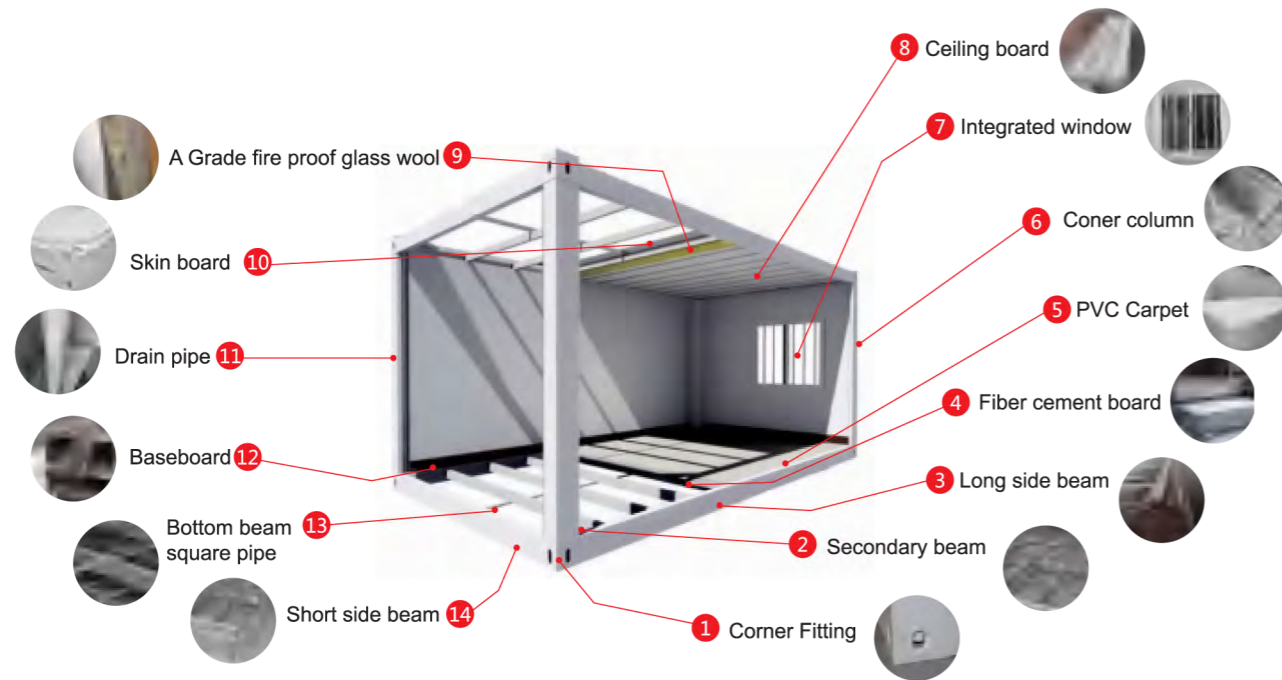
# CONTENTS





# FLAT PACK CONTAINER HOUSE

Easy Installation | Convenient Moving | Beautiful Appearance  
 Safe & Durable | Anti-Seismic Grade 8 | Wind Resistance Level 11



## STANDARD

SPECS 5800\*2400\*2890mm

### Loading

Loading:40HQ Load 6 Units

### Material

- 1.SGS Test Steel Frame
- 2.Fire Proof & Water Proof Wall Panel
- 3.Non-Asbestos Fiber Cement Board
- 4.integrated window

### Installation

4Workers+2Hours=1House

## OPTION

### Wall Panel

PU | Rockwool | Glasswool | EPS

### Floor

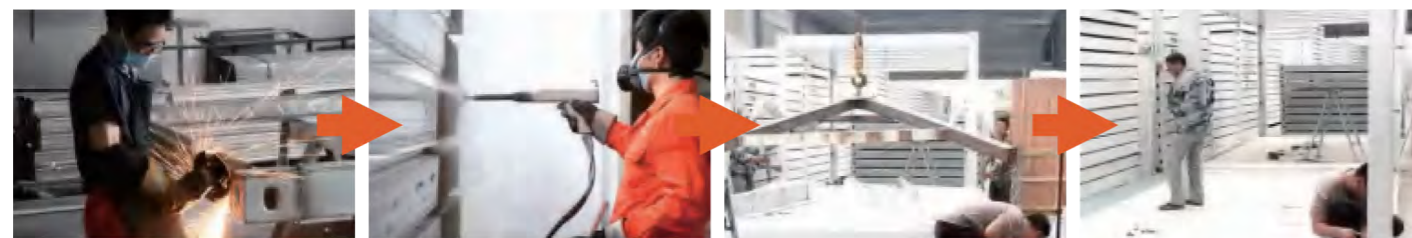
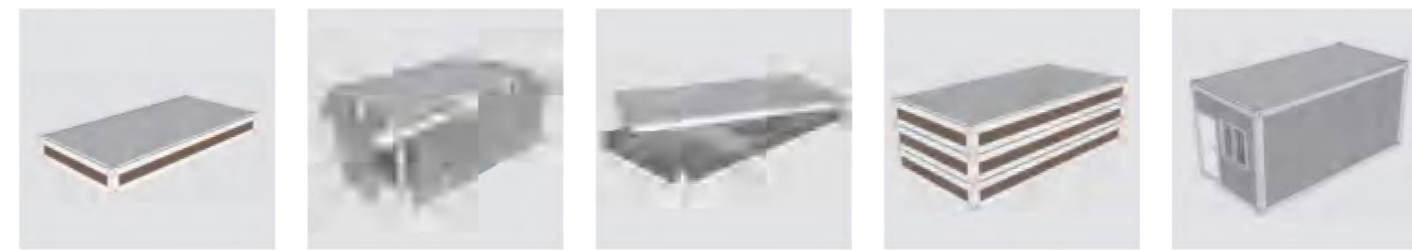
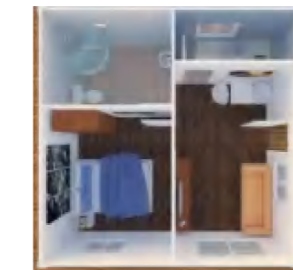
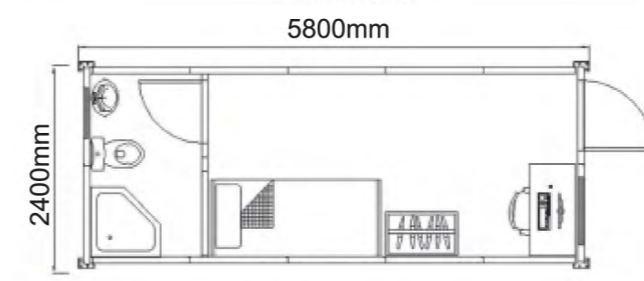
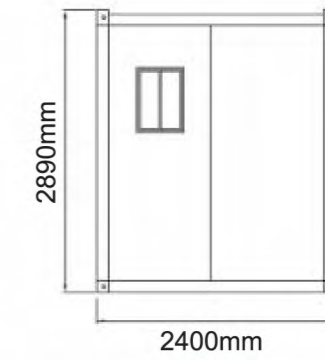
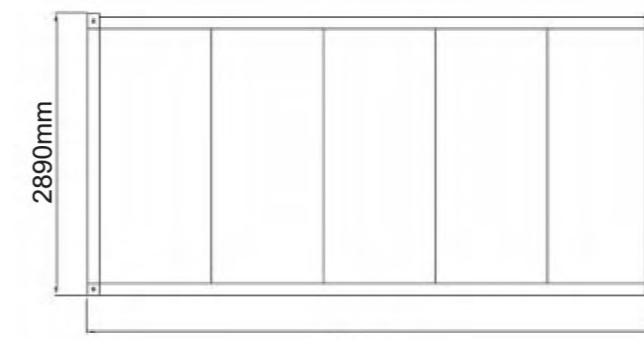
Fiber Cement | Plywood  
 Bolivian Magnesium

### Door & Window

Sliding | Inward Tilt-Turn  
 Inward Hinged | Single

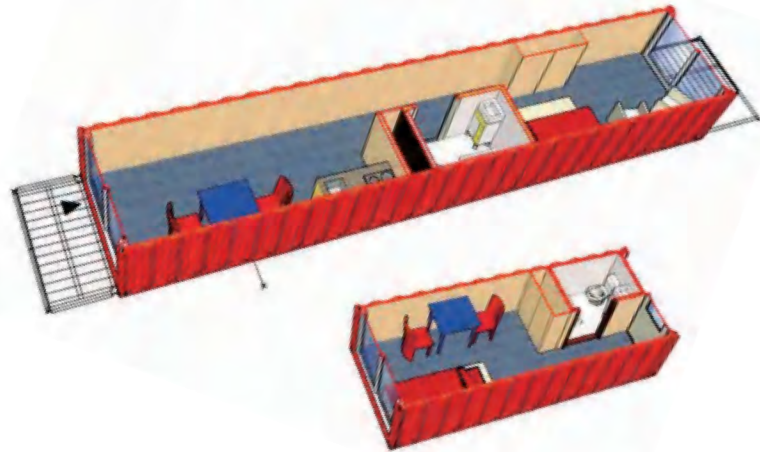
### Stairs & Corridor

Straight | Folding | Corridor





# MODIFIED SHIPPING CONTAINER



Cont Type	Size/mm	Lenth	Width	Height
20GP	Outside	6058	2438	2591
	Inside	5895	2350	2392
40GP	Outside	12192	2438	2591
	Inside	12029	2350	2392
40HQ	Outside	12192	2438	2896
	Inside	12029	2350	2697



**CHARACTORS**

Convenient Delivery | Sturdy & Durable  
Flexible Design | Excellent Sealing

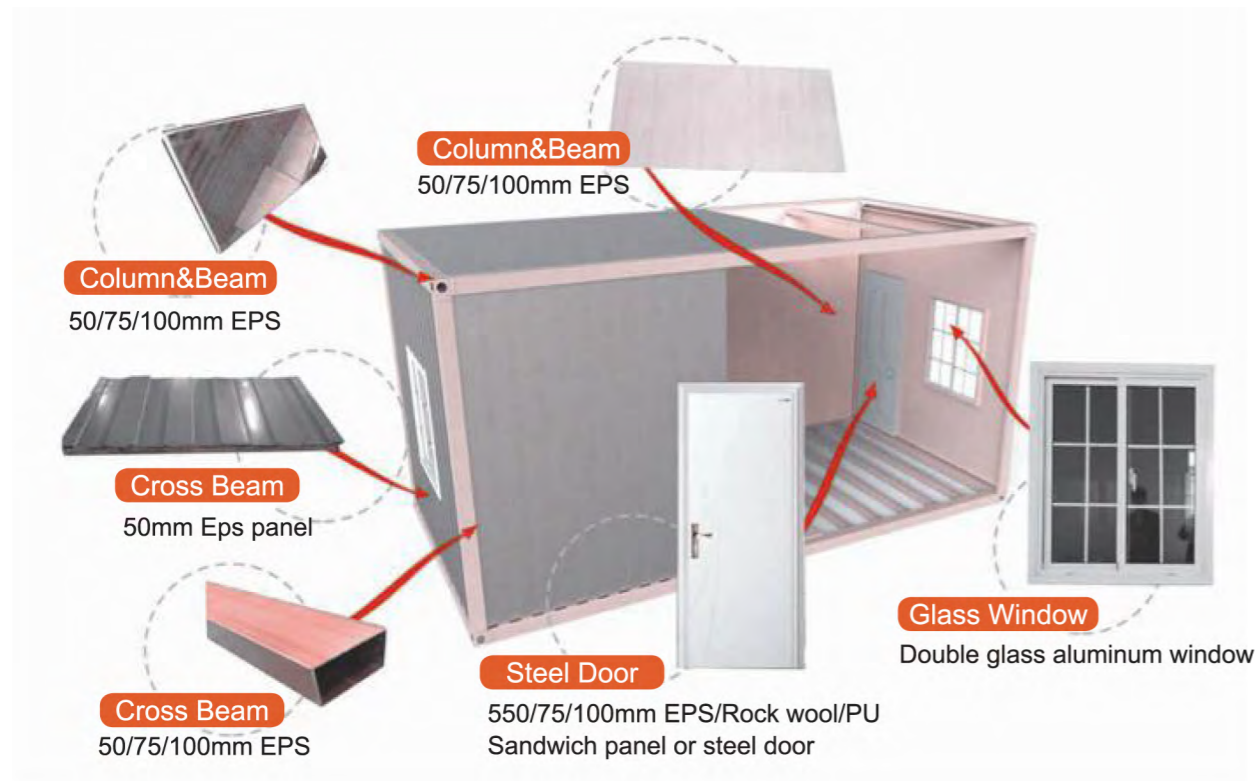
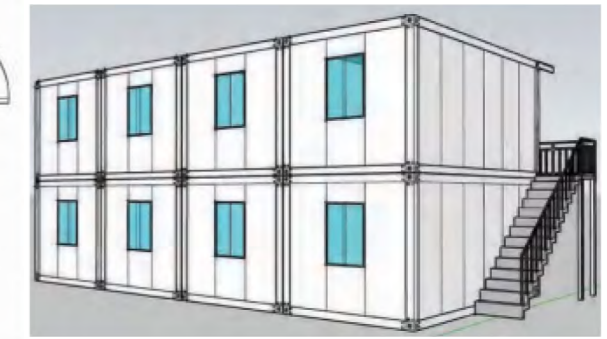
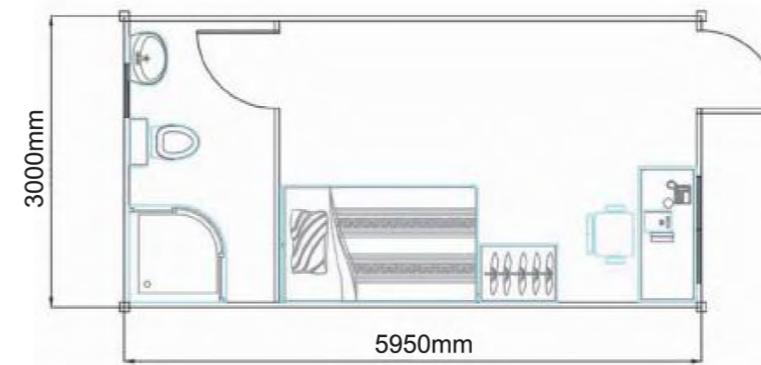
**APPLICATION**

Villa/Hotel/Shop/Office





# DETACHABLE CONTAINER HOUSE



## STANDARD

3000\*5950\*2800mm

## Loading

40HQ = 14 Units

## Material

1. Steel Frame
2. Fire Proof & Water Proof Wall Panel
3. MGO Board

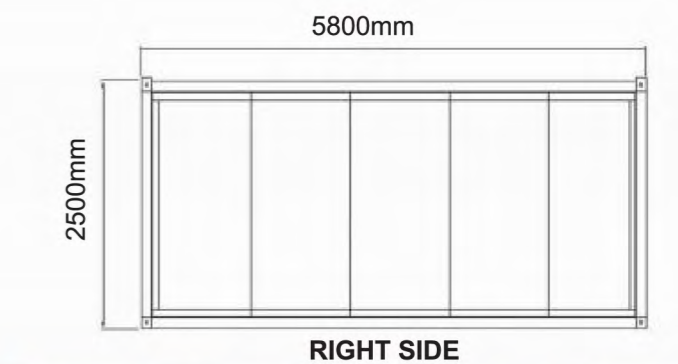
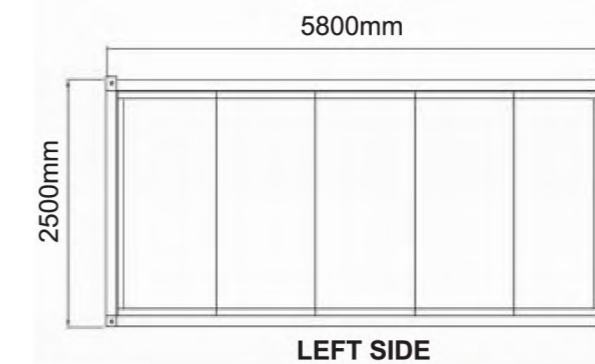
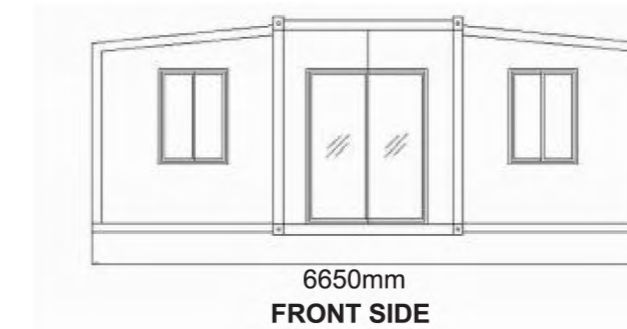
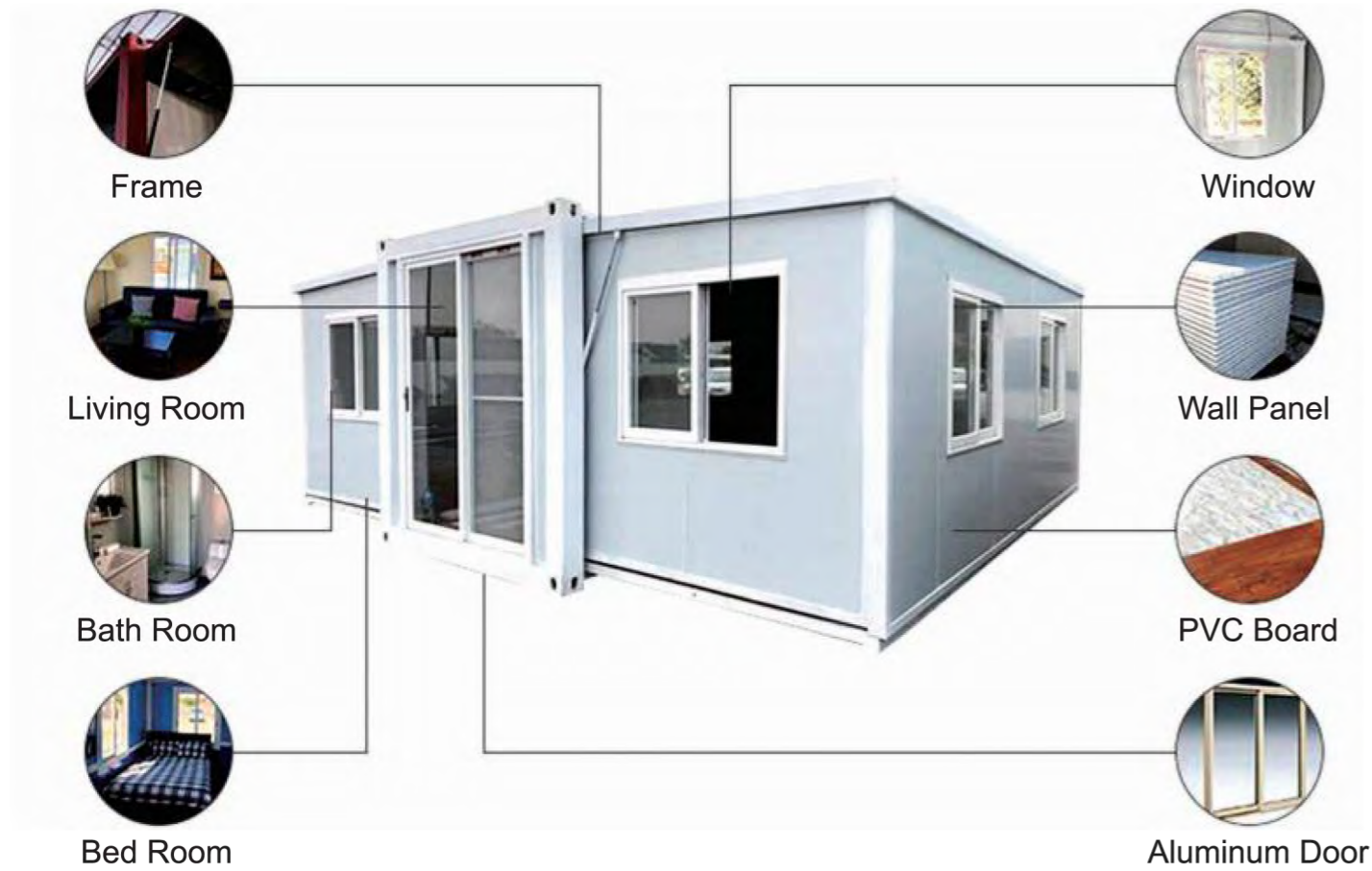
## Installation

4 Workers + 3 Hours = 1 House





# EXPANDABLE CONTAINER HOUSE



## QUICK INSTALLATION

5 Workers+10Min=1House  
Low labor cost  
Low shipping cost

## OPTION

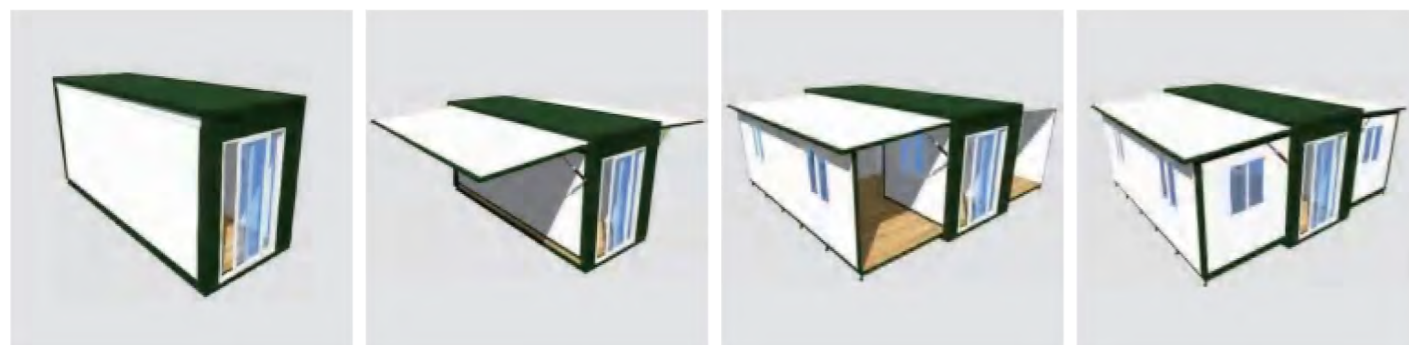
**Wall Panel**  
PU | Rockwool | Glasswool | EPS  
**Floor**  
Fiber Cement | Plywood Bolivian Magnesium

## Size before Expand

5800×2200×2500mm

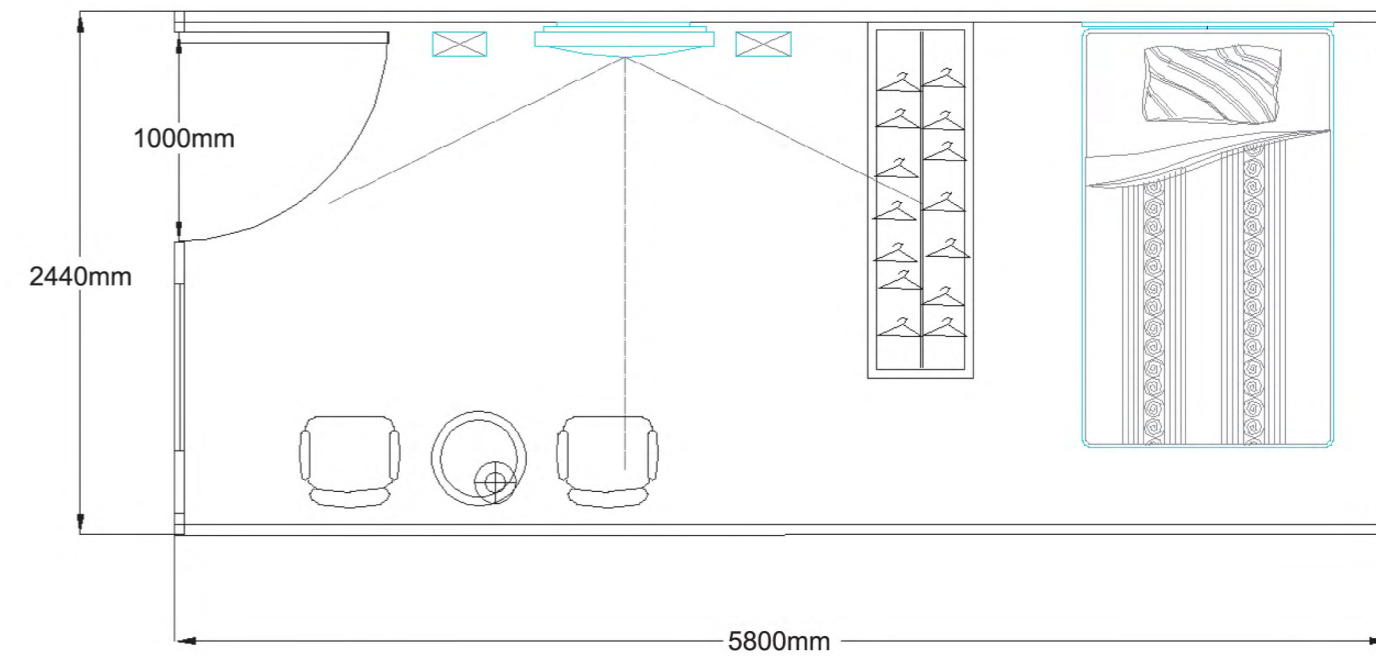
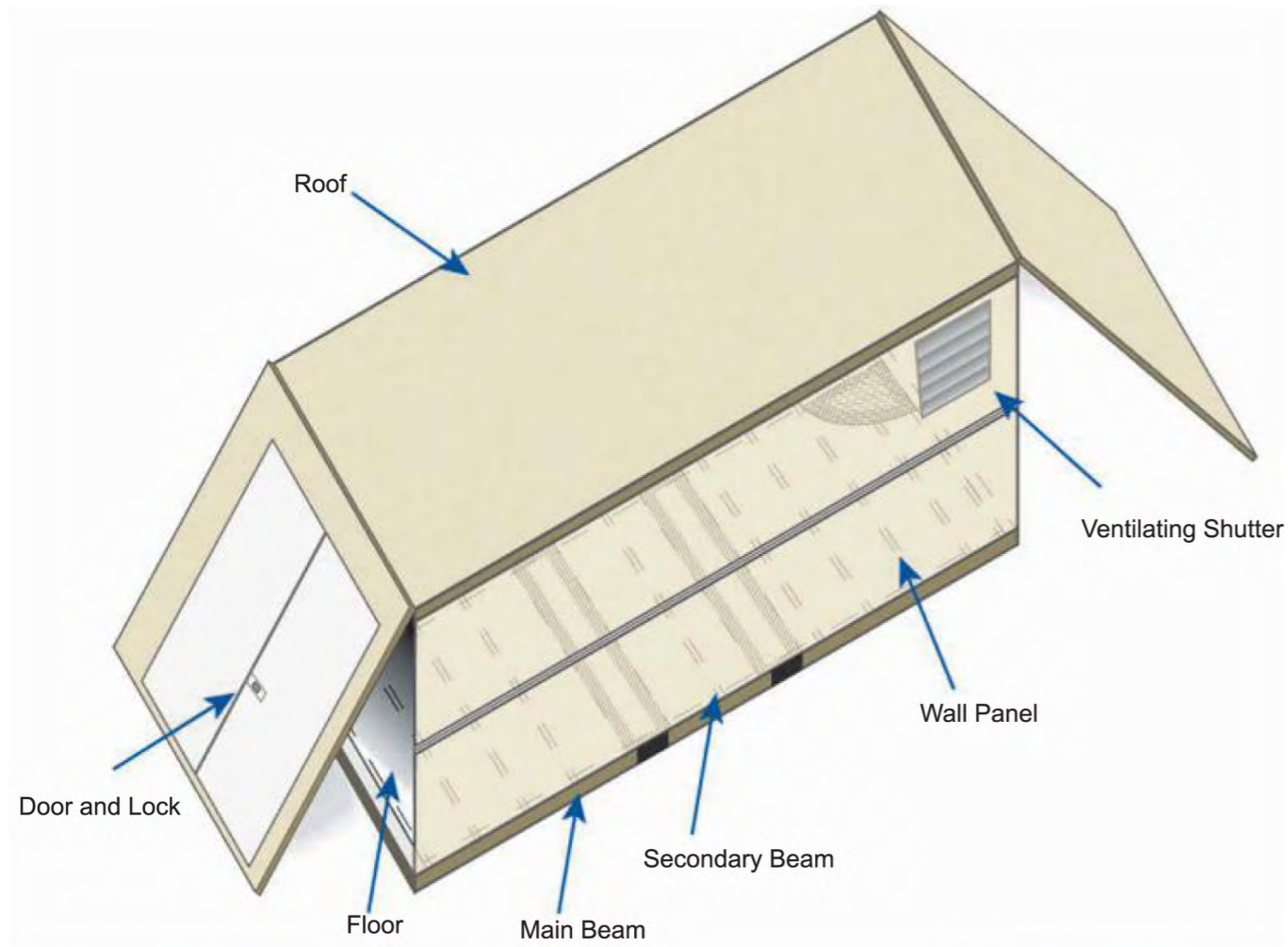
## Size after Expand

5800×6650×2500mm

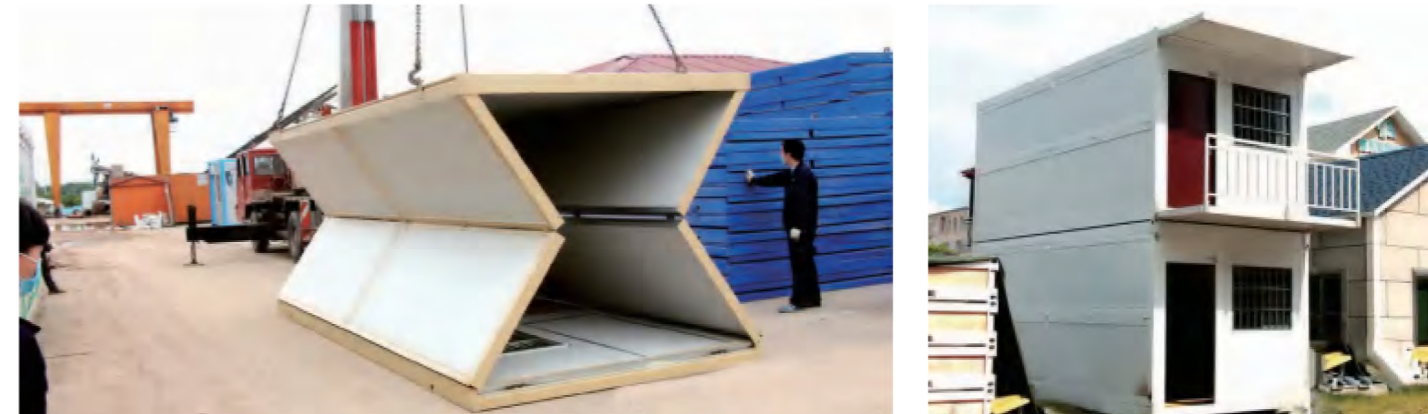




# FOLDING CONTAINER HOUSE



**CAPACITY**  
 40HQ Can Load 8 Sets  
**Expanded Size**  
 5800 x 2440 x 2620mm  
**Folded Size**  
 5800 x 2440 x 505mm  
 2 Workers + 10 Min = 1 House





# PORTABLE TOILET

## APPLICATIONS

- Railway station
- High-speed railway station
- Bus station
- Marathon
- Large outdoor activities park



## CHARACTERS

- Water storage and Sewage integrated toilet
- Strong and durable | Easy to assemble
- Can be repeatedly disassembled
- Size can be customized



## COLOR OPTIONS



1100×1100×2300mm



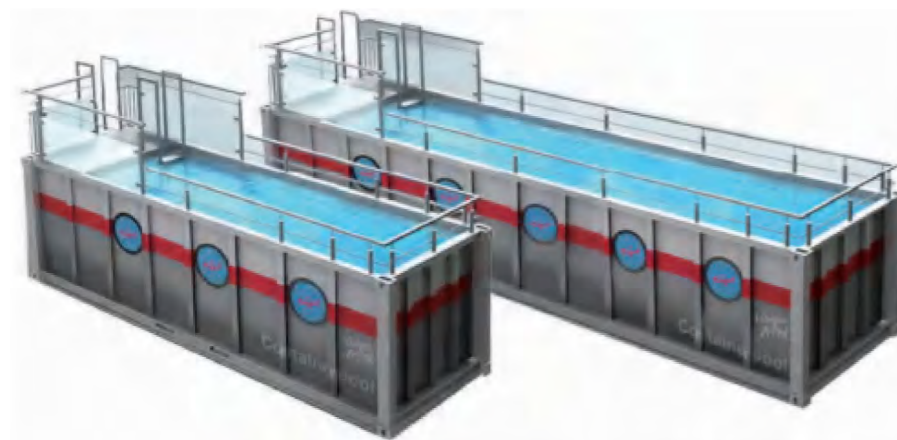
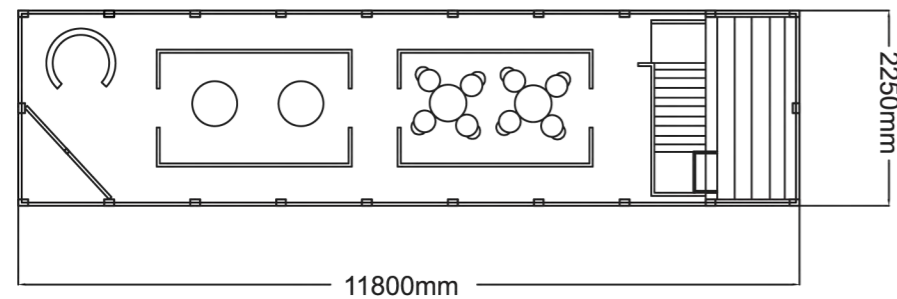
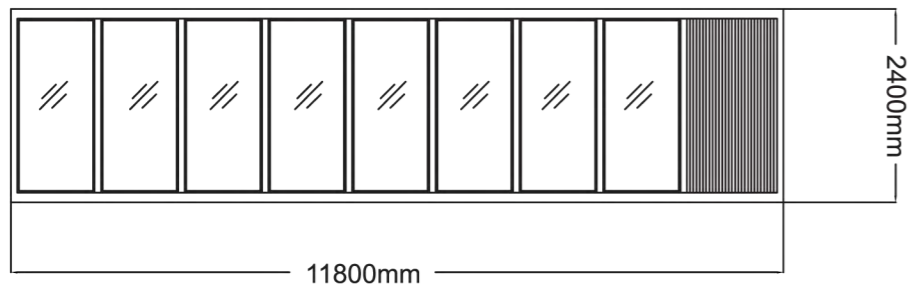
## EPS TOILET ADVANTAGES

- Movable | Less Space
- Less Manpower & Materials
- Less Financial Resource





# SWIMMING POOL

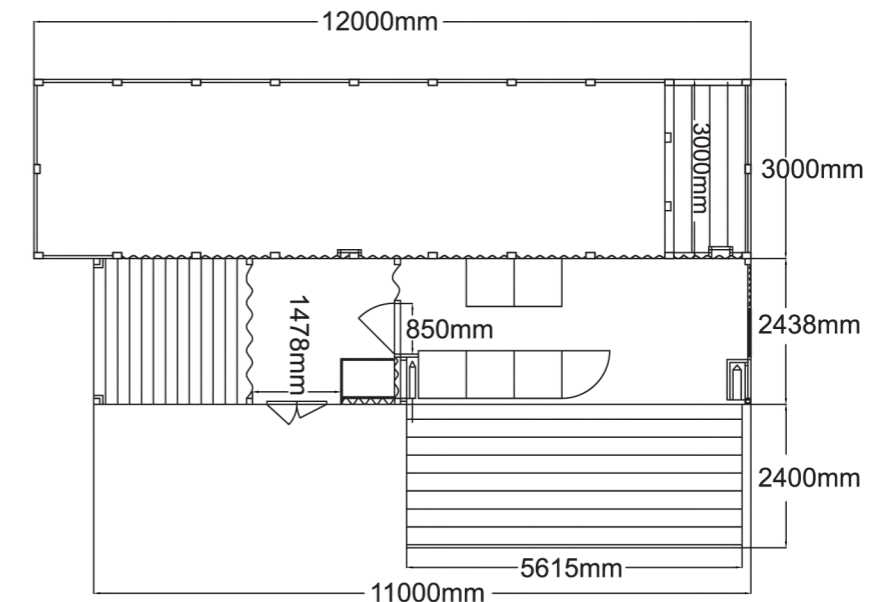
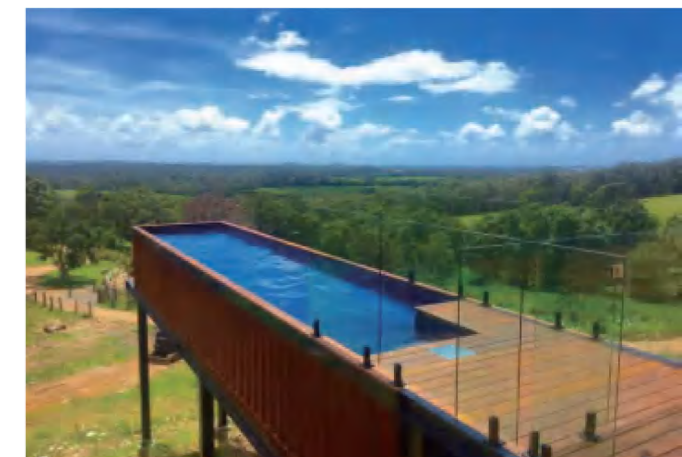


**SIZE:** 11800 X 2250 X 2400mm

**MATERIALS:** Steel Structure & Laminated Glass

**SPECIFICATION:** Laminated glass, Filtration system, Wave system, Drainage system, Leakage protection system, Pool lighting system, Pool Ladder, Plastic wood platform

**CHARACTORS:** Unique appearance, novel shape, suitable for camp and scenic spots.



## POOL BAR

11800 X 2200 X 1800mm (swimming pool)

12192 X 2438 X 2896mm (Bar)

**MATERIALS:** Shipping container, Steel Structure, hydraulic system, the pool system

**SPECIFICATION:** Swimming pool, Bar, Bar table, Bar stool, staircase, Guardrail, the deck of bar, Plastic wood platform.

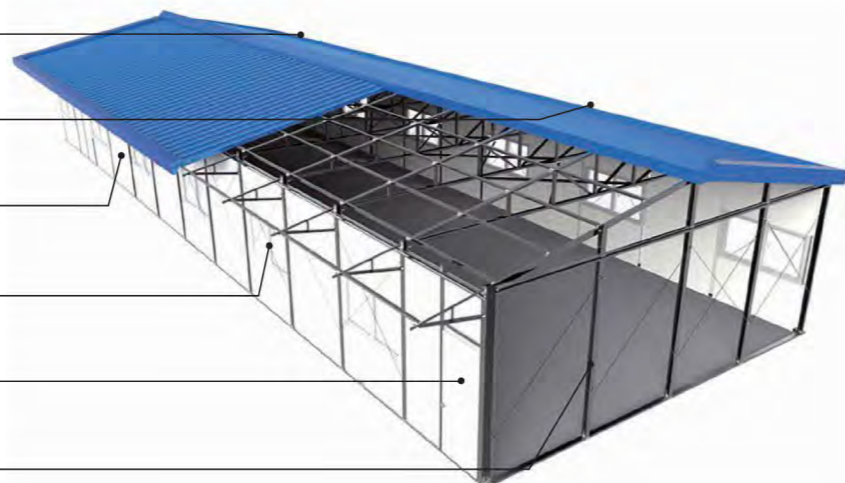


# PREFABRICATED HOUSE

## K TYPE HOUSE

1K=1820mm 1p=950mm

- Ridge Capping**  
single steel sheet
- Roof Panel**  
Sandwich panel
- Wall Panel**  
Sandwich panel
- Window**  
sliding window
- Door**  
Sandwich panel or steel door
- Main Steel**  
C section steel for column&beam



12K×6K



### SPECIFICATIONS

Life Span:12-20 Years  
Wind Resistance:88.2-117Km/h  
Earthquake Resistance:7Grade

### MATERIALS

Structure:Steel Structure  
Partition Wall:Sandwich Panel  
Wall:Sandwich Panel  
Roof:Sandwich Panel  
Windows:PVC Sliding Window  
Doors:  
Steel Door/Sandwich Panel Door  
Color:Blue | White | Red

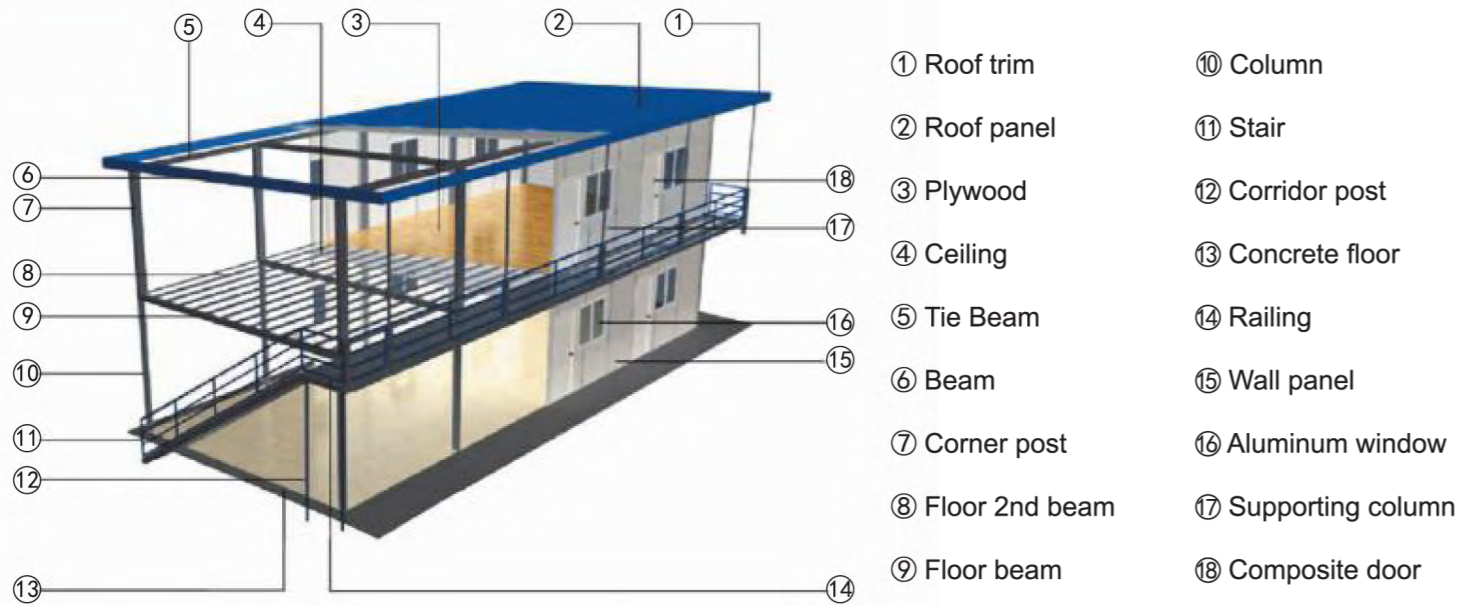
### INSTALLATION

6Workers + 2Days=3K×10K

W/L	Single floor (3p)			Two Floors (6p)			Three Floors (9p)		
	3K	4K	5K	3K	4K	5K	3K	4K	5K
4K	45.53	59.07	72.61	103.79	130.87	157.95	176.84	217.46	258.08
5K	56.67	73.52	90.38	126.97	160.68	194.39	212.07	262.63	313.09
6K	67.81	87.98	108.14	150.16	190.49	230.82	247.31	307.81	368.30
7K	78.95	102.43	125.90	173.35	220.30	267.26	282.54	352.98	423.41
8K	90.09	116.88	143.67	196.53	250.11	303.69	317.78	398.15	478.52
9K	101.22	131.33	161.43	219.72	279.93	340.13	353.01	443.32	533.63
10K	112.36	145.78	179.19	242.91	339.55	376.57	388.25	488.50	588.74
11K	123.50	160.23	196.96	266.09	339.36	413.00	423.48	533.67	643.85
12K	134.64	174.68	214.72	289.28	369.36	449.44	458.72	578.84	698.96
13K	145.78	189.13	232.48	312.47	399.17	485.88	493.96	624.01	754.07
14K	156.92	203.58	250.25	335.65	428.98	522.31	529.19	669.18	809.18
15K	168.06	218.03	268.01	358.84	458.79	558.75	564.43	714.36	864.29
16K	179.19	232.48	285.77	382.03	488.61	595.19	599.66	759.53	919.40
17K	190.33	246.93	303.54	405.21	518.42	631.62	634.90	704.70	974.51
18K	201.47	261.38	321.30	428.40	548.23	668.06	670.13	849.87	1029.62
19K	212.61	275.84	339.06	451.59	578.04	704.49	705.37	895.05	1084.73
20K	223.75	290.29	356.83	474.77	607.85	740.93	740.60	940.22	1139.84
21K	234.89	304.74	374.59	497.96	637.66	777.37	775.84	985.39	1194.95
22K	246.02	319.19	392.35	521.15	667.48	813.80	811.07	1030.56	1250.06
23K	257.16	333.64	410.12	544.33	697.29	850.24	846.31	1075.74	1305.17
24K	268.30	348.09	427.88	567.52	727.10	886.68	881.54	1120.91	1360.28
25K	279.44	362.54	445.64	590.71	756.91	923.11	916.78	1166.08	1415.17
26K	290.58	376.99	463.40	613.90	786.72	956.55	952.01	1211.25	1470.38
27K	301.72	391.44	481.17	637.08	816.53	995.99	987.25	1256.13	1525.60
28K	312.85	405.89	498.93	660.27	843.35	1032.42	1022.48	1301.60	1580.71
29K	323.99	420.34	516.69	683.46	876.16	1068.86	1057.72	1346.77	1635.82
30K	335.13	434.79	534.46	706.64	905.97	1105.30	1092.95	1391.94	1690.90



**T TYPE HOUSE**



**MATERIALS**

Structure: Steel Frame  
 Wall/Roof: 50MM Sandwich Panel  
 Window: Aluminium  
 Doors: Steel

**APPLICATIONS**

Construction Site  
 Labor Camp  
 Temporary premises



**Single Pitch Roof**



**Gable Roof**



**Hipped Roof**



**MODERN DESIGN**  
 Steel structures are invisible



# STEEL STRUCTURE

Steel Structure is widely used in large factories, Venues, Villas



# LIGHT STEEL VILLA



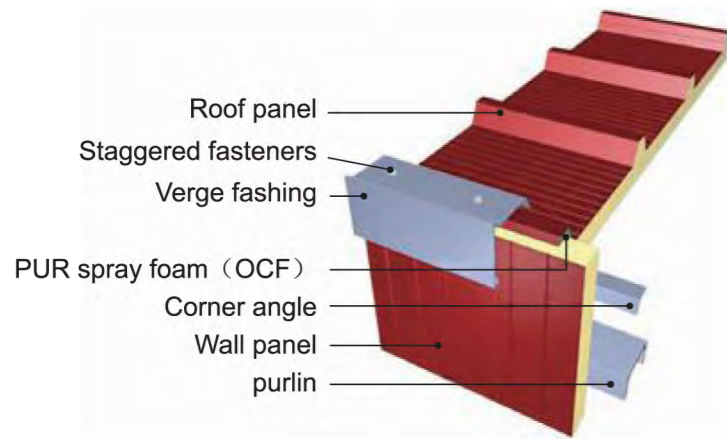
## ADVANTAGES

- Large production equipments
- Auto-spraying production line
- Can meet various requirements





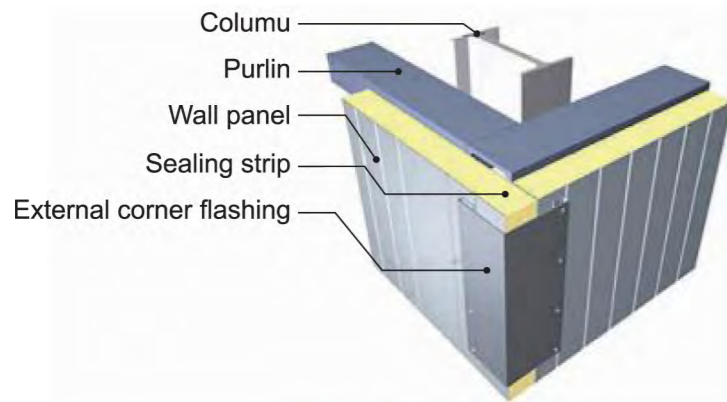
# SANDWICH PANELS



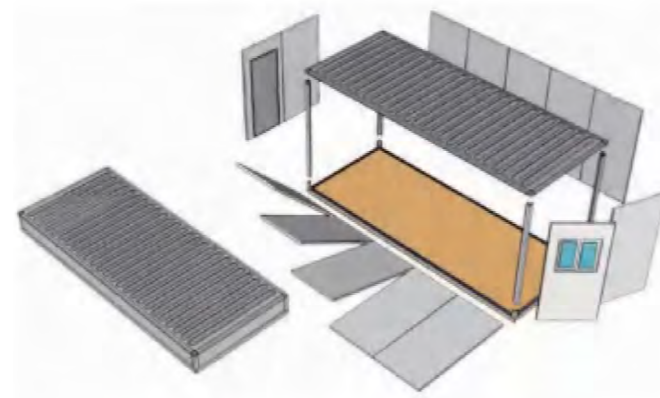
**Roof Panel**



**Application in Prefab House**



**Wall Panel**



**Application in Container House**

## FEATURES

### Outside Layer:

Corrugated Color Steel Sheet or PVC  
Aluminum Foil

### Core Options:

PU/EPS/Rockwool/Glasswool

### Thickness:

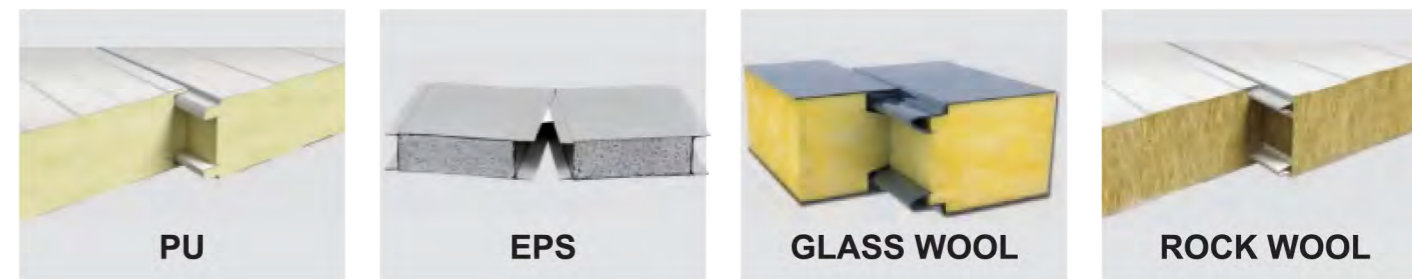
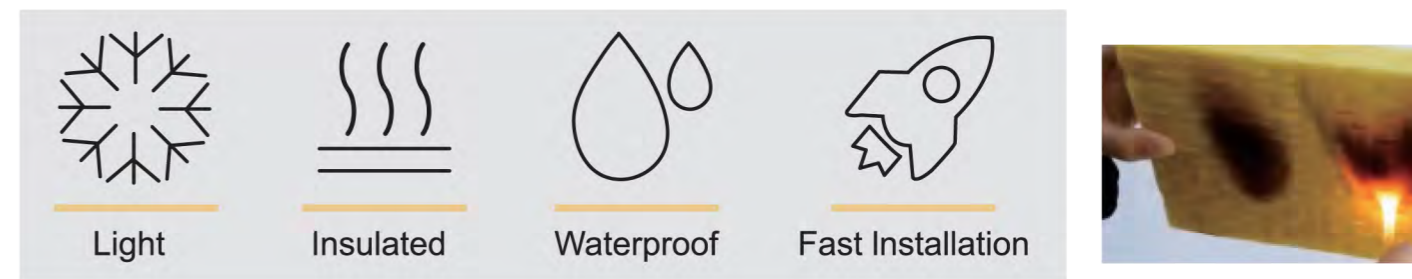
50mm/75mm/100mm/150mm/Customized

### Color:

Blue | White Gray | Customized



Standard export packing					
Thickness	Panel type	Width	Length	Quantity in a 40HQ Container	
50mm	wall panel	950mm	11.9m	116 pieces	1112 square meters
50mm	roof panel	960mm	11.9m	80 pieces	914 square meters
75mm	Wall panel	950mm	11.9m	72 pieces	814 square meters
75mm	roof panel	960mm	11.9m	56 pieces	639 square meters
100mm	Wall panel	950mm	11.9m	53 pieces	600 square meters
100mm	roof panel	960mm	11.9m	44 pieces	502 square meters
150mm	wall panel	950mm	11.9m	38 pieces	430 square meters
150mm	roof panel	960mm	11.9m	33 pieces	377 square meters
200mm	wall panel	950mm	11.9m	28 pieces	317 square meters
200mm	roof panel	960mm	11.9m	24 pieces	274 square meters





# CREATIVE CASE



CREATIVE ◀ COLORFUL ▶ CONTAINER









# ACCESSORIES



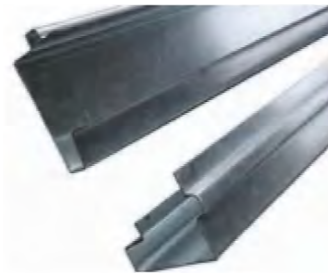
Top Beam



Top Cross Beam



Top Corner Fitting



Bottom Beam



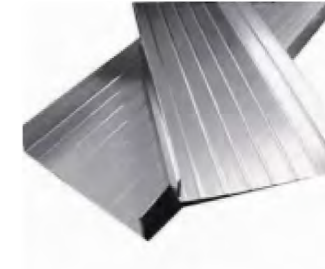
Rain Water Slot



Hexagon Bolt



Slide Panel Joint



Cornice(Color Steel)



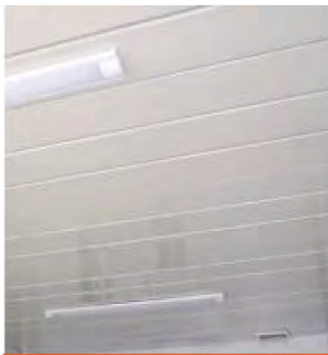
Bottom Cross Beam



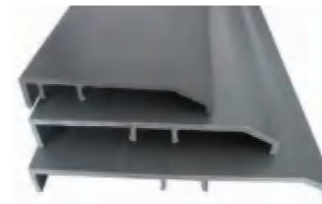
Bottom Corner Fitting



Corner Column



Ceiling Board



PVC Skirting



Top Frame Corner Joint



Bottom Frame Corner Joint



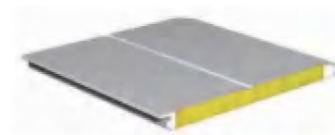
Corner Post Reinforcement



Bottom Module



Top Module



Wall Panel



Fiber Cement Board



Sealant Strip



PVC-U Reducer Union



Screen Window



Water Pipe Plug



Window



Door



PVC Floor



Glass Wool



U-PVC Water Pipe



Thread Rod



Riot Box



Rubber Stopper





Water Tap1

Shower

Urinal

Water Tap2

Distribution Box

Emergency Exit Sign

Wire

Energy-Saving Lamp



Hand Washbasin

Squatting Pan

Flushing Tank

Mop Pool

Five Holes Socket

Switch

AC Socket

Waterproof Socket



Flushing Toilet

Mirror

Stainless Steel Wash Basin

Whole Bathroom

Fire Emergency Light

Door Closer

Drain Pipe

Service Pipe



Wall Type Heater

Ceiling Lamp

Ventilating Fan

Toilet Roll Holder

Non-Slip Mat

Floor Drain

Bath Basket

Pipe Elbow



Cooperative Partner



Live with the world