

QUOTATION

Type	Model	Specification	Quotation USD	Picture
Crawler excavator	TW135	ISUZU diesel engine 73 kw 13500 kg, 0.6 m3 bucket 7635x2500x2750 mm Max. Digging Radius:8000mm Max. Digging Depth:5100mm Max. Digging Height:8540mm Max. Dumping Height:4058mm	60500	
	TW150	CUMMINS QSF3.8T3TC140 104KW , 15000 kg, 0.8 cbm bucket Pump: KYB Valve: KYB Swing motor: KYB,	66000	
	TW180	Engine Cummins QSF3.8 93KW Bucket capacity:0.8 m3 Dimension(L×W×H):8540×2700×2920mm Max. Digging Radius:8985mm Max. Digging Depth:5975mm Max. Digging Height:9430mm Max. Dumping Height:6960mm	68200	
	TW220	CUMMINS B5.9-C engine, 133KW, 21.5 T, Japanese Kawasaki pump, valve, swing motor. Travel motor: Japanese Nabtesco, A/C cab, joystick, English monitor, radio, MP3, 1 m3 bucket, 9390x2780x3040mm	84700	
	TW240	CUMMINS B5.9-C engine, 133KW, 23.6T, Japanese Kawasaki pump, valve, swing motor. travel motor Japanese Nabtesco, A/C cab, joystick, English monitor, radio, MP3, 1-1.2m3 bucket, 9740x2980x3190mm	96800	
	TW320	DOOSAN 168KW 30t, 12700kg, 1.27m3 bucket Pump: Doosan Valve: Doosan Swign motor: Eaton	121000	
	TW370	ISUZU 6HK1 engine, 212 KW, 36 T, Japanese Kawasaki pump, Kawasaki valve, swing motor, Kawasaki Travel motor, A/C cab, joystick, English monitor, radio, MP3, 1.7 m3 bucket, 11080x3190x3180mm	146300	
bachoe loader	TW880	H leg, slide boom, JCB3CX copy YUCHAI / CUMMINS engine 8215kg, 1 m3 / 0.3 m3 Max. Digging Depth:4082 mm 4x4, close cabin with AC	32450	

CRAWLER EXCAVATOR

Our mini excavator is new developed compact mini-sized excavator with competitive price, with EPA or EURO 5 engine, famous brand pump, valves. swing boom, extendable tracks, plenty different attachments

Machine Model	UNIT	TW08	TW10	TW12
				
Operating Weight	kg	750	950	1000
Bucket capacity	m ³	0.02	0.025	0.025
Overall Dimension	L / W / H	2480x720x1150	2550x930x1990	2800x940x1990
Engine Brand		Koop/ changchai	Koop/ changchai	Koop
Engine Model		192FAM	192FAM	192FAM
Engine Type		Air cooled	Air cooled	Air cooled
No. of cylinders		1 cylinder	1 cylinder	1 cylinder
Engine Power	kw	7.5 / 8.6	7.5 / 8.6	7.5
Max.travel speed	km/h	2	2	2
Swing speed	r/min	11	11	11
Bucket digging force	kN	7.5	9.4	9.4
Bucket arm digging force	kN	5	5.8	5.8
Working pressure	Mpa	16	16	16
Length of track	mm	1140	1235	1235
Width of track	mm	150	180	180
Max. Digging radius	mm	2050	2400	2850
Max. Digging depth	mm	1220	1400	1650
Max. Digging height	mm	2400	2490	2610
Max. Dumping height	mm	1650	1750	1850
Height of bulldozer blade	mm	125	325	345
Depth of bulldozer blade	mm	210	175	255
QUOTATION FOB QINGDAO	USD	3300	3850	3900

U series high end excavator is new developed compact excavator with new design, mould made cover parts, Kubota same design boom, Eaton swing motor, Eaton traveling motor, full hydraulic control system. They are with high reliability, easy operations, and excellent protection for the driver. It will become your excellent partner.

Machine Model	UNIT	TW18U	TW20U	TW22U
				
Operating Weight	kg	1500	1700	2000
Bucket capacity	m ³	0.03	0.045	0.045
Overall Dimension	L / W / H	2800x1100x2350	3160x950 (1300) x2380	3850x950 (1300) x2128
Engine Brand		Kubota / Laidong / Xinchai	Kubota	Kubota / laidong
Engine Model		722 / 385 / 3B11	902	1105 / 385
Engine Type		water cooled	water cooled	water cooled
No. of cylinders		2 / 3 cylinder	2 cylinder	3 cylinder
Engine Power	kw	10.2 / 18.2 / 16	11.2	14 / 18.1
Max.travel speed	km/h	3	4 / 2	4 / 2
Swing speed	r/min	11	10.5	11
Bucket digging force	kN	12.5	13.5	13.5
Bucket arm digging force	kN	9.2	10.1	10.1
Working pressure	Mpa	18	18	18
Length of track	mm	1300	1500	1900
Width of track	mm	180	230	230
Max. Digging radius	mm	2400	3470	3556
Max. Digging depth	mm	2100	2150	4045
Max. Digging height	mm	2740	3275	2150
Max. Dumping height	mm	2050	2310	2452
Height of front blade	mm	325	262	262
Depth of front blade	mm	175	192	192
Price of sample FOB QINGDAO	USD	8800 (Laidong engine)	12600 (Kubota engine)	11800 (Laidong engine)

Machines are CE approved

Delivery time: within 15-25 days

Terms of payment: 30%TT in advance balance 70% paid before shipment.

Warranty: 1 year or 2000 working hours.

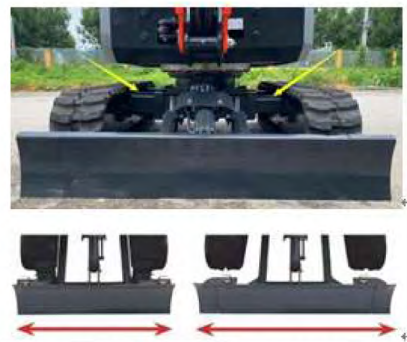
Kubota Euro 5 / EPA Engine ↵



Swing boom ↵



Extendable tracks ↵



Cabin ↵



New type boom (protect cylinder) ↵



Joystick, full hydraulic control ↵



Sound proof, easy maintenance ↵



4 poles roof, strong ↵



High / low speed ↵



 Model: TW07 Weight: 700 kg Bucket: 0.02 m ³	 Model: TW08 Weight: 800 kg Bucket: 0.025 m ³	 Model: TW10 Weight: 900 kg Bucket: 0.025 m ³	 Model: TW10-A Weight: 1000 kg Bucket: 0.025 m ³	 Model: TW10-B Weight: 1000 kg Bucket: 0.025 m ³	 Model: TW12 Weight: 1000 kg Bucket: 0.025 m ³	 Model: TW12C Weight: 1100 kg Bucket: 0.025 m ³					
 Model: TW13 Weight: 1200 kg Bucket: 0.02 m ³	 Model: TW14 Weight: 1300 kg Bucket: 0.03 m ³	 Model: TW15 Weight: 1400 kg Bucket: 0.03 m ³	 Model: TW16 Weight: 1500 kg Bucket: 0.045 m ³	 Model: TW18 Weight: 1800 kg Bucket: 0.06 m ³	 Model: TW20 Weight: 2000 kg Bucket: 0.06 m ³	 Model: TW20-A Weight: 2000 kg Bucket: 0.06 m ³					
 Model: TW22 Weight: 2200 kg Bucket: 0.1 m ³	 Model: TW22-A Weight: 2200 kg Bucket: 0.1 m ³	 Model: TW30 Weight: 2800 kg Bucket: 0.1 m ³	 Model: TW35 Weight: 3600 kg Bucket: 0.15 m ³	 Model: TW45 Weight: 4200 kg Bucket: 0.17 m ³	 Model: TW60 Weight: 6000 kg Bucket: 0.21 m ³	 Model: TW12-L Weight: 1200 kg Bucket: 0.025 m ³					
 Auger Drill	 Raker	 Ripper	 Gripper	 Hydraulic Hammer	 Quick Hitch	 Thumb	 Narrow Bucket 200mm	 Leveling Bucket 500mm	 Tilting Bucket 800mm	 Leveling Bucket 800mm	 Tilting Bucket 1000mm

ABOUT US



Co., Ltd, founded in 2008, is one of the professional total solution supplier of mining machinery and construction machinery with its many years of production, sales and services. keeps on growing with its reliable products and good service, Product coverage continues to expand, like Diesel scooptram, electric scooptram, Drilling jumbo, Crawler excavator, Wheel excavator, Backhoe loader, Wheel loader, Skid steering loader, Foam concrete machine, Forklift, Road roller. is with ISO 9001 International quality management system certification, most of the products are CE approved, some models are with EPA approved engine.

sales network covers more than 20 provinces and cities, and exported to more than 60 countries, like Peru, Chile, Australia, Thailand, Indonesia, Brazil, Argentina, South Africa, Germany, England, France, Finland etc; several countries are with agent and distributors. Company adheres service first, quality-oriented management aim, got more and more good reputation these years.

Co., Ltd sincerely hope to work together with customers both home and aboard to have win-win business relationship.

WELCOME your visiting



OUR TEAM



SAMPLE DISPLAY





OUR CERTIFICATE



PRODUCTION PROCESS



PACKAGING LOGISTICS



PRICE LIST OF MINI ECAVATOR

VALIDITY: end of Oct, 2021

Machine Model	UNIT	TW07	TW08	KING TW10	TW10-A	TW10-B	TW12	TW12C	TW13	TW14	TW15	TW16	TW18
Operating Weight	kg	700	900	900	1000	1000	1000	1100	1200	1300	1400	1500	1800
Bucket capacity	m ³	0.02	0.025	0.025	0.025	0.025	0.025	0.025	0.025	0.03	0.03	0.045	0.06
Overall Dimension	L / W / H	2480x920x1150	2800x940x1900	2550x930x1990	2550x940x1990	2840x880x2200	2550x940x1990	2550x940x2200	2800x940x1990	2800x1100x2200	2800x1100x2200	3160x1040x2200	3880x1050x2280
Engine Brand		Koop	Koop	Koop	Koop	Koop	Koop / Yanmar	Koop / Yanmar	Changchai / Yanmar	Laidong / Yanmar	Laidong / Kubota	Yanmar	Laidong / Kubota
Engine Model		192FAM	192FAM	192FAM	192FAM	192FAM	192FAM / 3TNV70	192FAM / 3TNV70	192FAM / 3TNV70	385 / 3TNV70	385 /	3TNV70	3TE25 / D1105
Engine Type		Air cooled	Air cooled	Air cooled	Air cooled	Air cooled	Air / Water cooled	Air / Water cooled	Air / Water cooled	Water cooled	Water cooled	Water cooled	Water cooled
No of cylinders		1 cylinder	1 cylinder	1 cylinder	1 cylinder	1 cylinder	1 / 3 cylinder	1 / 3 cylinder	1 / 3 cylinder	3 cylinder	3 cylinder	3 cylinder	3 cylinder
Engine Power	kw	7.5	7.5	7.5	7.5	7.5	7.5 / 10	7.5 / 10	7.5 / 10	18.1 / 10	18.1 / 10	10	18.4 / 14.2
Max travel speed	km/h	2	2	2	2	2	2	2	2	2.4	2.4	2.4	2.8
Swing speed	r/min	11	11	11	11	12	12	12	12	12	12	12	12
Bucket digging force	kN	7.5	9.4	9.4	9.4	7.5	9.4	9.4	9.4	13.5	13.5	17.5	11.5
Bucket arm digging force	kN	5	5.8	5.8	5.8	5	5.8	5.8	5.8	10.1	10.1	10	9.3
Working pressure	Mpa	16	16	16	16	16	16	16	16	18	18	70/50	16
Length of track	mm	1140	1235	1235	1235	1235	1235	1235	1090	1300	1300	1450	1630
Width of track	mm	150	180	180	180	180	180	180	180	180	180	180	230
Max Digging radius	mm	2460	2850	2400	2400	3065	2850	2850	2850	2400	2400	3560	3860
Max Digging depth	mm	1220	1650	1400	1650	1715	1650	1650	1650	1800	1800	2150	2050
Max Digging height	mm	2400	2610	2490	2490	2600	2610	2610	2610	2740	2740	3275	3370
Max Dumping height	mm	1650	1850	1750	1750	1830	1850	1850	1850	1750	1750	2310	2390
Height of bulldozer blade	mm	125	345	325	325	325	345	345	345	345	345	325	235
Depth of bulldozer blade	mm	210	255	175	175	175	255	255	255	255	255	192	270
QUOTATION FOB QINGDAO	USD	3300	4620	4400	4500	4600	4600	5300	5600	6400	7250	11300	11800

Machine Model	UNIT	TW20	TW20-A	TW22	TW22-A	TW30	TW35	TW45	TW60	TW12-L
Operating Weight	kg	2000	2000	2200	2200	2800	3600	4200	6000	1200
Bucket capacity	m ³	0.06	0.06	0.1	0.1	0.1	0.15	0.17	0.21	0.02
Overall Dimension	L / W / H	3400x990x2350	3850x1100x2128	4170x1300x2270	4082x1200x2128	4180x1400x2128	4450x1600x2200	5500x1750x1861	5940x1880x2570	3200x1300x2200
Engine Brand		Yanmar	Laidong / Kubota	Laidong / Kubota	Changchai / Yanmar	Changchai / Yanmar	Changchai / Yanmar	Xincha / Yanmar	Kubota	KOOP / KUBOTA
Engine Model		3TNV70	3TNV70	3TE30 / D1105	390 / 3TNV88	390 / 3TNV88	390 / 3TNV88	490 / 4TNV88	V2607	192FAM
Engine Type		Water cooled	Water cooled	Water cooled	Water cooled	Water cooled	Water cooled	Water cooled	Water cooled	Air / Water cooled
No of cylinders		3 cylinder	3 cylinder	3 cylinder	3 cylinder	3 cylinder	3 cylinder	4 cylinder	4	1 / 3 cylinder
Engine Power	kw	10	10	22.1 / 14.2	19.6 / 20	19.6 / 20	34 / 20	36.8 / 25.2	42.4	8.6
Max travel speed	km/h	3.4 / 1.9	2.5	2.8	2.2	2.8	2.7 / 4.6	2.7 / 4.4	2.5-4.2	5
Swing speed	r/min	11	11	12	12	12	11	10	11	12
Bucket digging force	kN	13.5	13.5	11.5	13.5	23.7	23.7	23.7	48	9.4
Bucket arm digging force	kN	10.1	10.1	9.3	10.1	21.6	21.6	21.6	35	5.8
Working pressure	Mpa	22	18	16	18	18	22	22	28	16
Length of track	mm	1590	1900	1630	1900	2300	2175	2190	2580	/
Width of track	mm	230	230	250	230	250	300	350	400	/
Max Digging radius	mm	3700	4045	4350	4023	4040	4730	4730	6128	2400
Max Digging depth	mm	2150	2500	2500	2150	2500	2545	2545	3808	1600
Max Digging height	mm	3275	3556	3700	3714	3900	4450	4450	5499	2490
Max Dumping height	mm	2310	2452	2330	2488	2600	3050	3050	3854	1750
Height of bulldozer blade	mm	275	275	310	310	359	359	359	474	/
Depth of bulldozer blade	mm	180	180	240	240	268	268	268	376	/
QUOTATION FOB QINGDAO	USD	13100	10800	14100	14900	15900	/	/	22500	/

SOTW

The image displays a collection of 21 mini excavator models arranged in three rows. Each model is accompanied by a small image and a text box providing its model name, weight, and bucket capacity. Below the excavators, there are 11 icons representing different attachments: Auger Drill, Raker, Ripper, Gripper, Hydraulic Hammer, Quick Hitch, Thumb, Narrow Bucket 200mm, Leveling Bucket 500mm, Tilting Bucket 800mm, and Tilting Bucket 1000mm.

Model	Weight	Bucket Capacity
Model: TW07	700 kg	0.025 m ³
Model: TW08	800 kg	0.025 m ³
Model: TW10	900 kg	0.025 m ³
Model: TW10-A	1000 kg	0.025 m ³
Model: TW10-B	1000 kg	0.025 m ³
Model: TW12	1000 kg	0.025 m ³
Model: TW12C	1100 kg	0.025 m ³
Model: TW13	1200 kg	0.03 m ³
Model: TW14	1300 kg	0.03 m ³
Model: TW15	1400 kg	0.03 m ³
Model: TW16	1500 kg	0.045 m ³
Model: TW18	1800 kg	0.06 m ³
Model: TW20	2000 kg	0.06 m ³
Model: TW20-A	2000 kg	0.06 m ³
Model: TW22	2200 kg	0.1 m ³
Model: TW22-A	2200 kg	0.1 m ³
Model: TW30	2800 kg	0.1 m ³
Model: TW35	3600 kg	0.15 m ³
Model: TW45	4200 kg	0.17 m ³
Model: TW60	6000 kg	0.21 m ³
Model: TW12-L	1200 kg	0.025 m ³

