

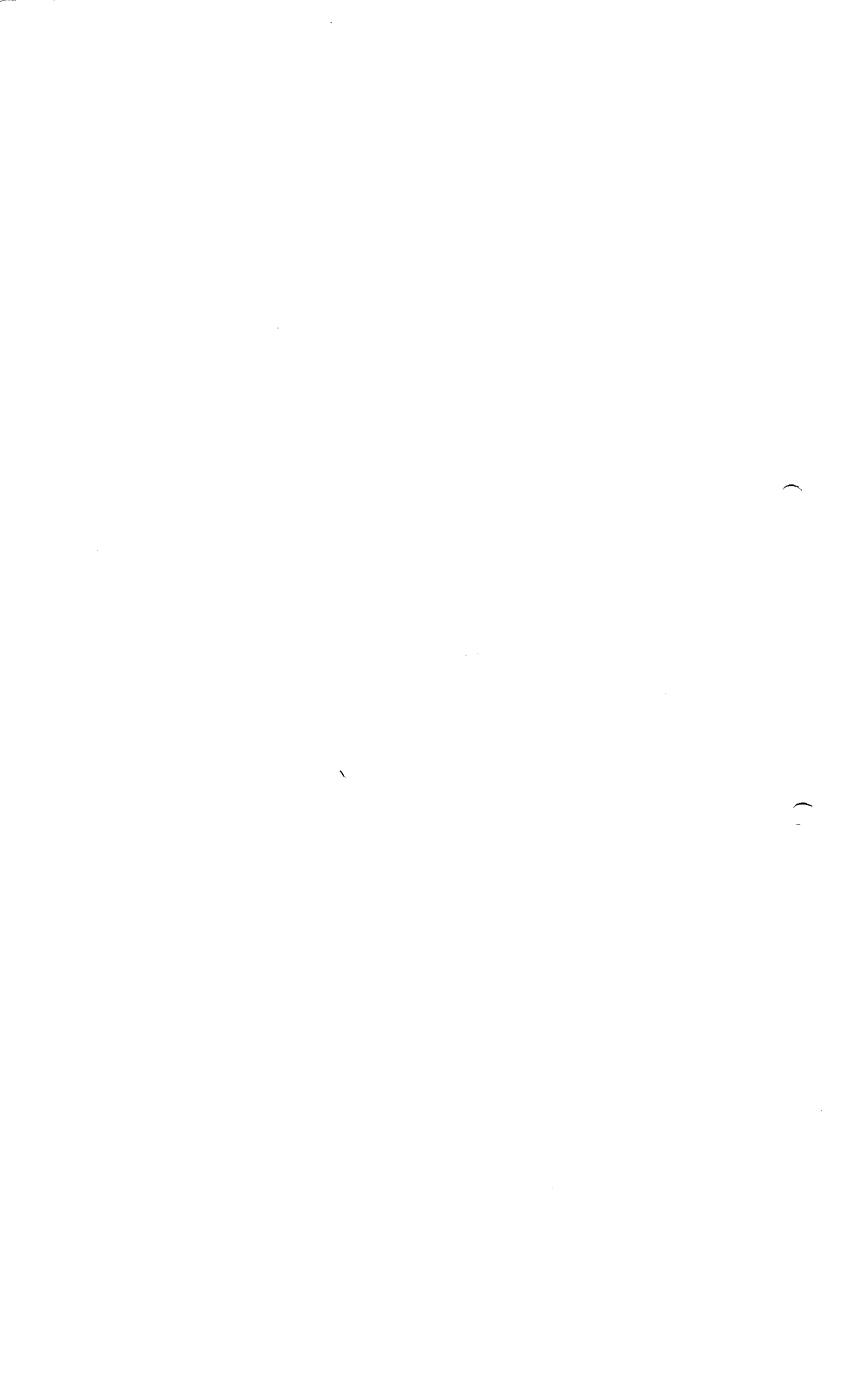


3.2.A.1

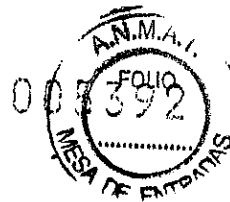
Crude Tetanus Toxoid Product Flow - Building V14 - Level 2


ROXANA MONTEMILONE
DIRECTORA TÉCNICA
SANOFI PASTEUR S.A.


CHRISTIAN DOMINGUEZ
APODERADO
SANOFI PASTEUR S.A.







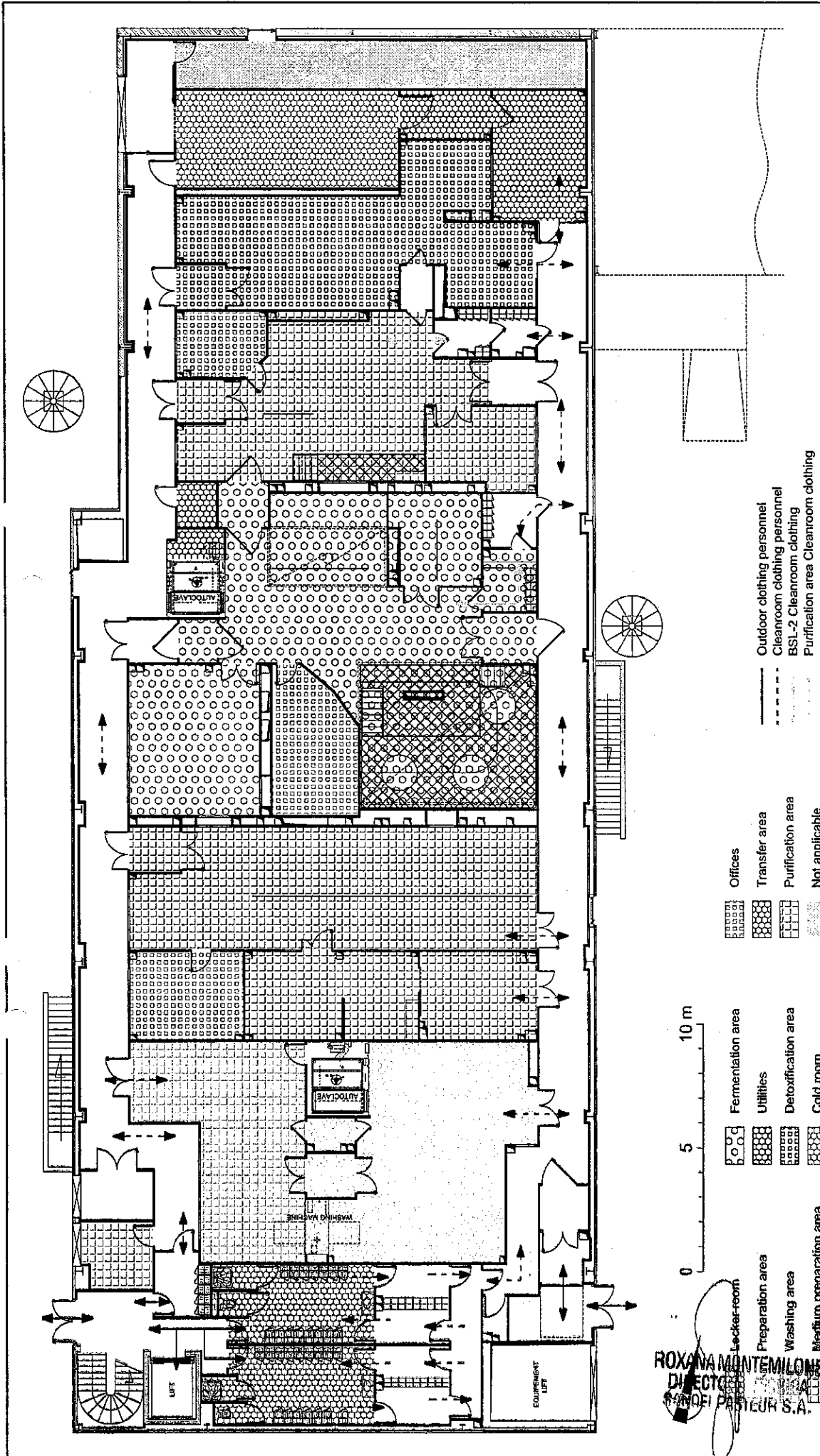
3.2.A.1

Personnel Flow - Crude Tetanus Toxoid - Building V14 - Level 2


ROXANA MONTEMILONE
DIRECTORA TÉCNICA
SANOFI PASTEUR S.A.


CHRISTIAN DOMINGUEZ
APODERADO
SANOFI PASTEUR S.A.





- Offices
- Transfer area
- Purification area
- Not applicable
- Fermentation area
- Utilities
- Detoxification area
- Cold room
- Waste area
- Preparation area
- Washing area
- Medium preparation area
- Preculture area

- Outdoor clothing personnel
- Cleanroom clothing personnel
- BSL-2 Cleanroom clothing
- Purification area Cleanroom clothing

Building: V14 Sub-Building: **F Flux** Floor: **2** Class: **Master TQC BPF**
 Discipline: **F Flux** Sub-Discipline: **:900 Flow-Control** Sheet Type: **PL Plan view**
 Sub-Dis-Cat: **.PER** Personal Description: **Personnel flow for Crude Tetanus Toxoid**
 Layout Name: **12-PER-A3** Scale: **1/150 Sheet Size-A3**
 Drawing ID: **DRWFR_00010586**
 File Name: **V14_F900_2_PL07**

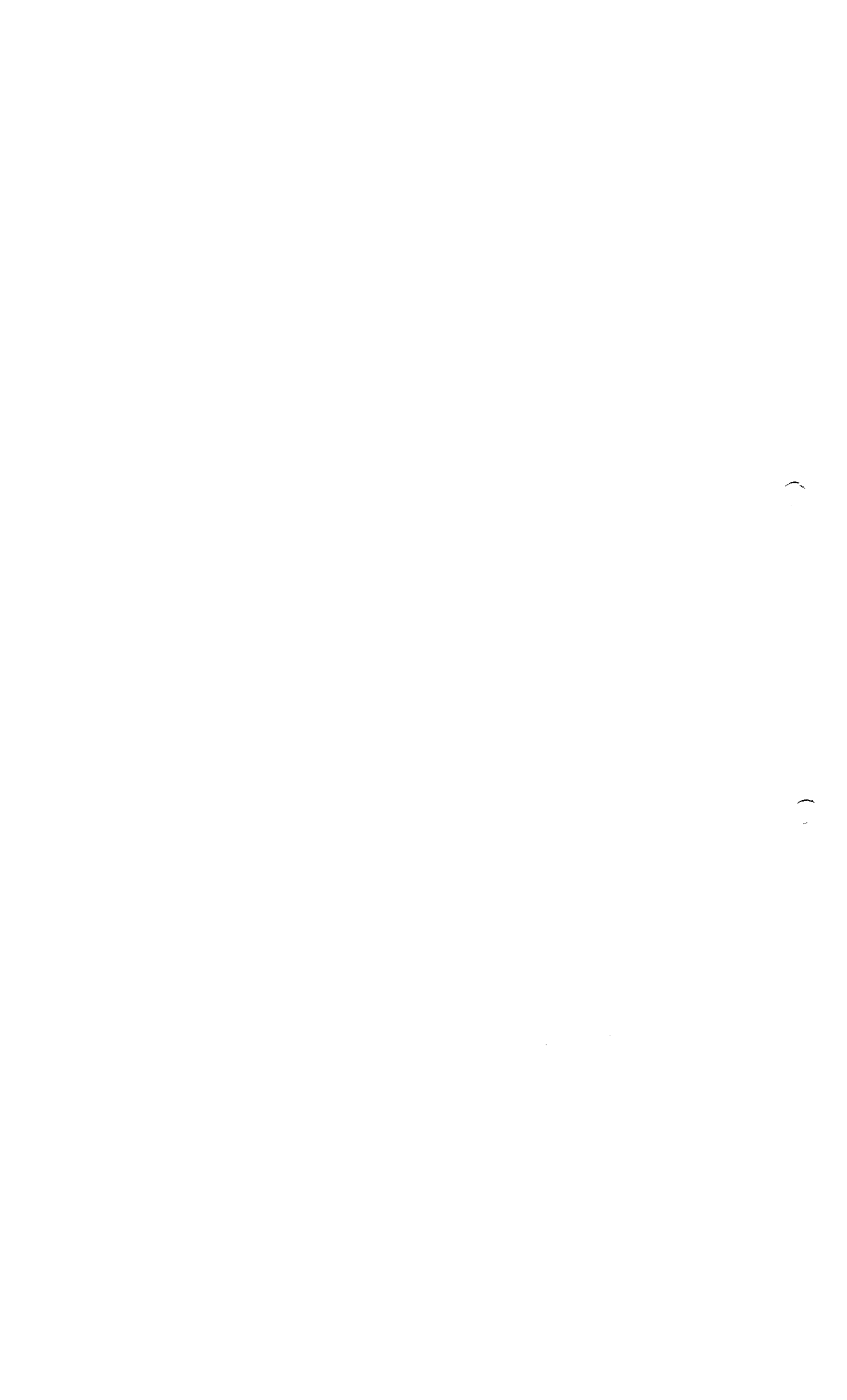
sanofi pasteur
 La division vaccins du Groupe sanofi-aventis.
 BUREAU D'ETUDES
 CAMPUS MERIEUX 1941, AV. ANTOINE MERIEUX
 69280 MARCY LETOILE
 TEL : 04 37 37 01 00
 FAX : 04 37 37 39 91

A.N.M.A.T. F.O.I.O.
 17/10/2007
 DEPARTAMENT D'INDUSTRIAS

Modification	1.0	Validation	Approved	TARASSIOUX Igor	15 Oct 2010
N° versions	0.1	State	Resp Affaires	Dessinateur	Date Appr
ROLE:		FUNCTION:	Concepteur	DATE - HEURE:	RAISON:
			CHAMBERY Centre		

ROXANA MONTEMILO
 DIRECTOR GENERAL
 SANOFI PASTEUR S.A.

CHRISTIAN DOMINGUEZ
 SANOFI PASTEUR S.A.



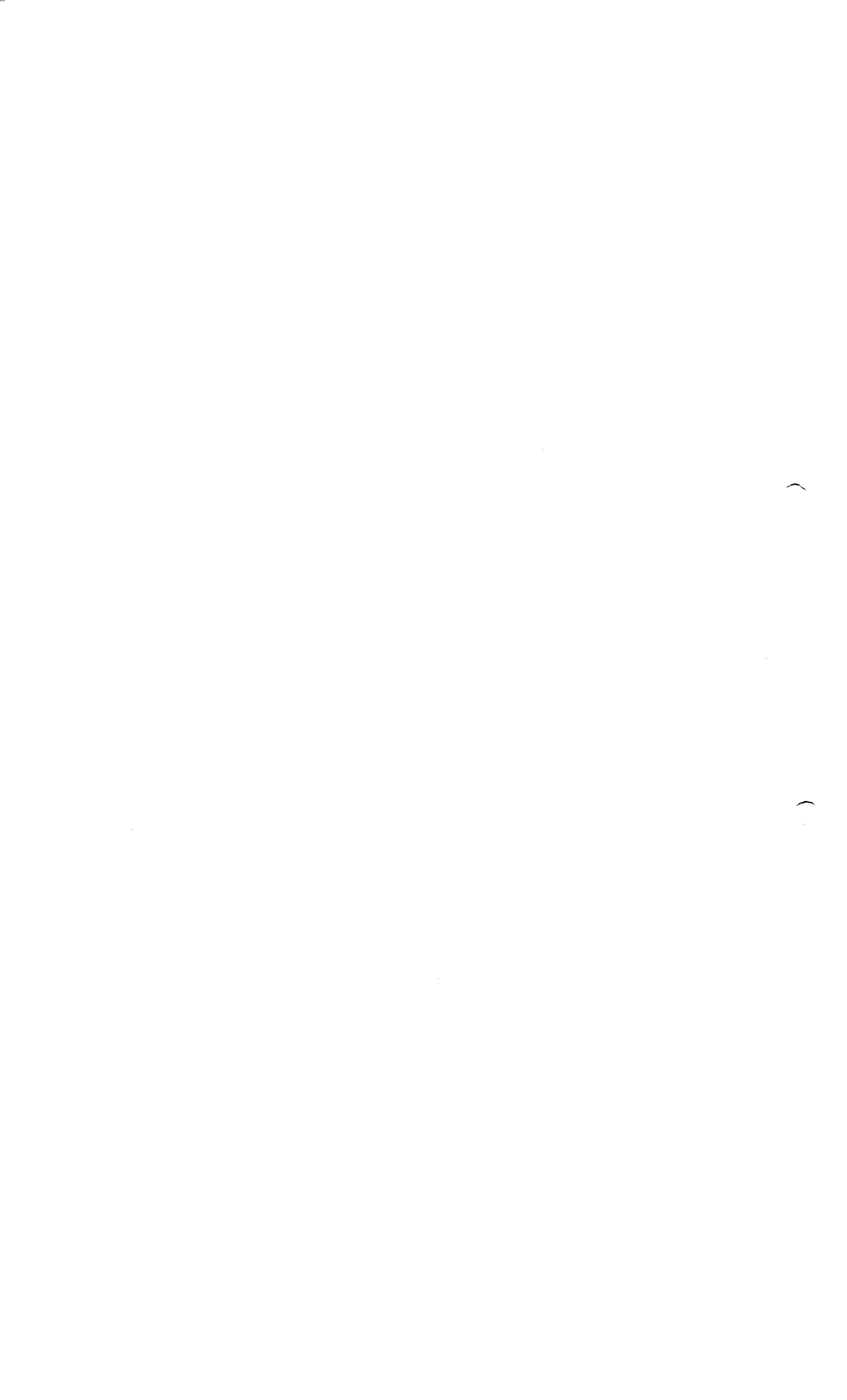


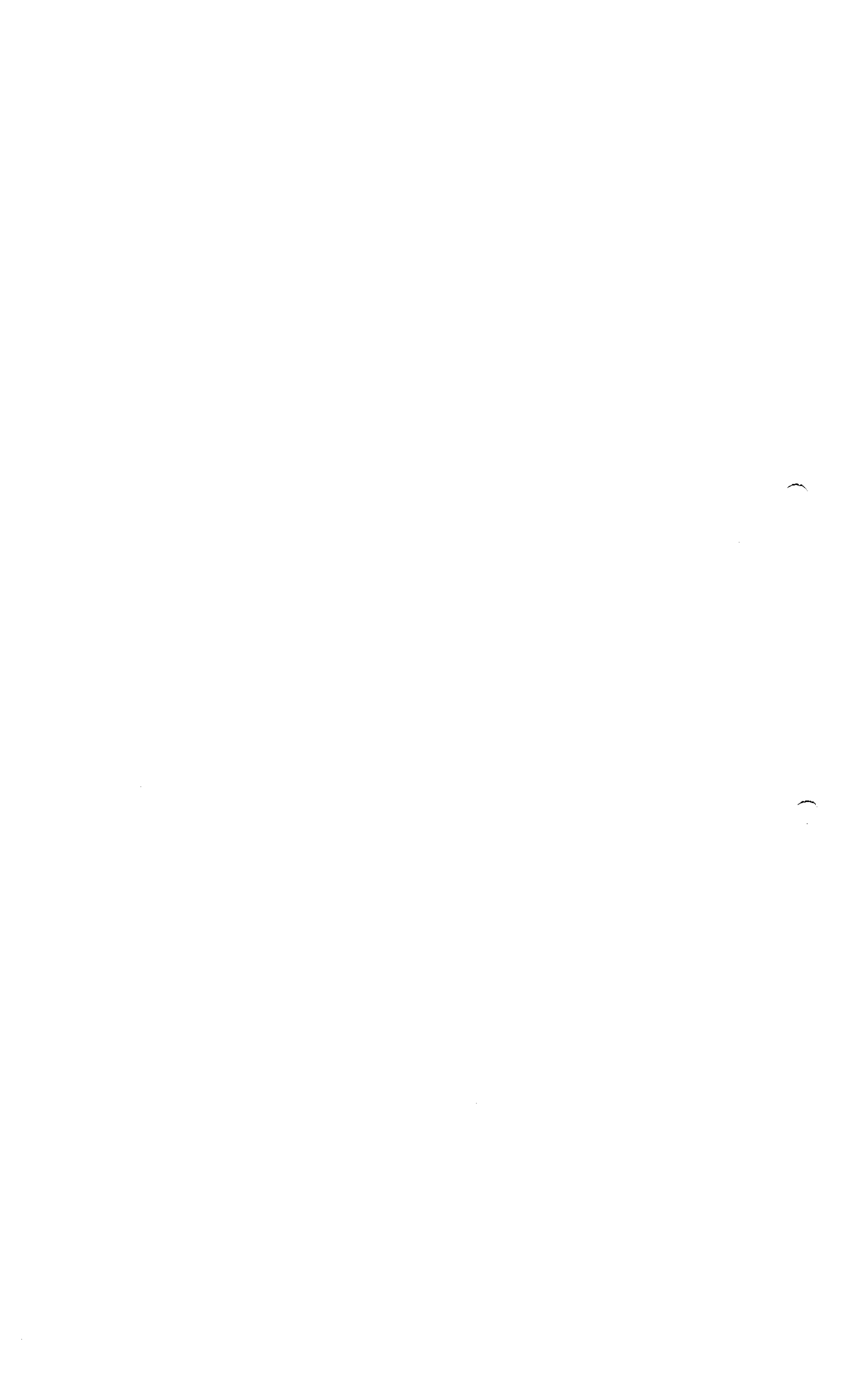
3.2.A.1

**Clean and Soiled Equipment Flow - Crude Tetanus Toxoid - Building V14 -
Level 2**


ROXANA MONTEMILONE
DIRECTORA TÉCNICA
SANOFI PASTEUR S.A.


CHRISTIAN DOMINGUEZ
APODERADO
SANOFI PASTEUR S.A.



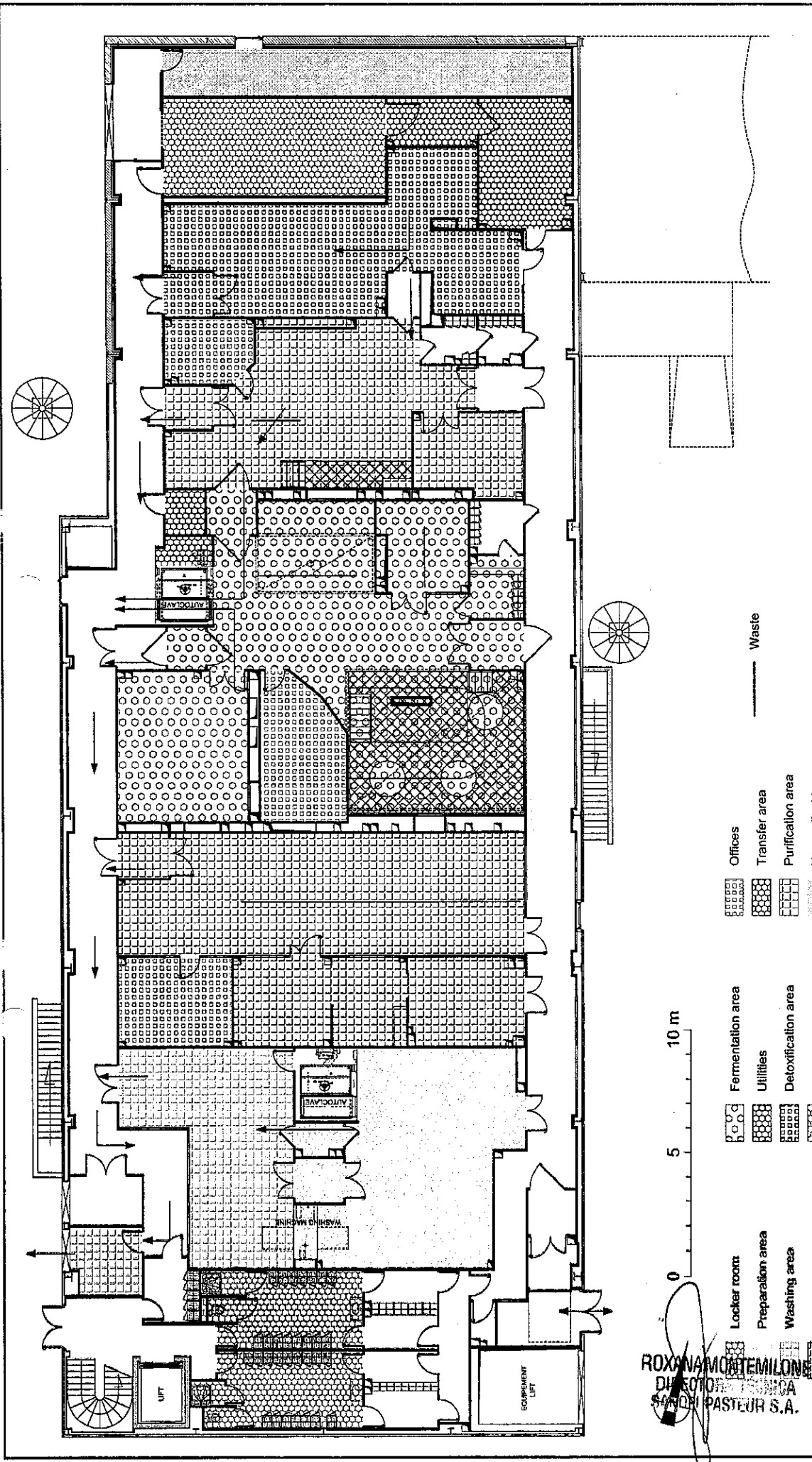




3.2.A.1

Waste Flow - Crude Tetanus Toxoid - Building V14 - Level 2

	
ROXANA MONTEMILONE	CHRISTIAN DOMINGUEZ
DIRECTORA GENERAL	APODERADO
SANOFI PASTEUR S.A.	SANOFI PASTEUR S.A.



- Locker room
- Preparation area
- Washing area
- Medium preparation area
- Pre-culture area
- Fermentation area
- Utilities
- Detoxification area
- Cold room
- Waste area
- Offices
- Transfer area
- Purification area
- Not applicable

ROXANA MONTEMILONE CHRISTIAN
 DIRECTOR GENERAL
 SANOFI PASTEUR S.A.

Building : **V14** Sub-Building : **2** Class : **Master TQC BPF**
 Discipline : **F Flux** sub-Discipline : **900 Flow-Control** Sheet Type : **.PL Plan view**
 Sub-Dis-Cat : **.DECH Waste**
 Description : **Waste flow for Tetanus for Crude Tetanus Toxoid**

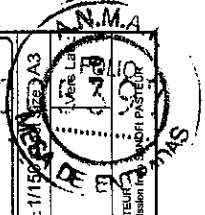
Layout Name : **15-DECH-A3** Scale : **1/1500**
 Drawing ID : **DRWFR 00010586**
 File Name : **V14_F900_2_PL07**

sanofi pasteur
 La division vaccins du Groupe sanofi-aventis.

BUREAU D'ETUDES
 CAMPUS MERIEUX 1541, Av. Marcel MERIEUX
 69380 ALBERT LÉTOILE
 Tél : 04 37 37 01 00
 Fax : 04 37 37 39 51

Reproduction of drawings, in part or in whole is forbidden without permission from SANOFI PASTEUR S.A.

Modifications	1.0	15 Oct 2010	TARASSIOUX Igor	15 Oct 2010
N° vers.	0.1	Date Inactif		
ROLE :	Concepteur	Date Appr		
INOM :	Resp. Affaires	DATE - HEURE :		
	CHAMBERLY Sabine	RAISON :		





3.2.A.1

Department Allocation Plan - Building V11 - Level 2


ROXANA MONTEMILONE
DIRECTOR TÉCNICA
SANOFI PASTEUR S.A.


CHRISTIAN DOMNGUEZ
APODERADO
SANOFI PASTEUR S.A.





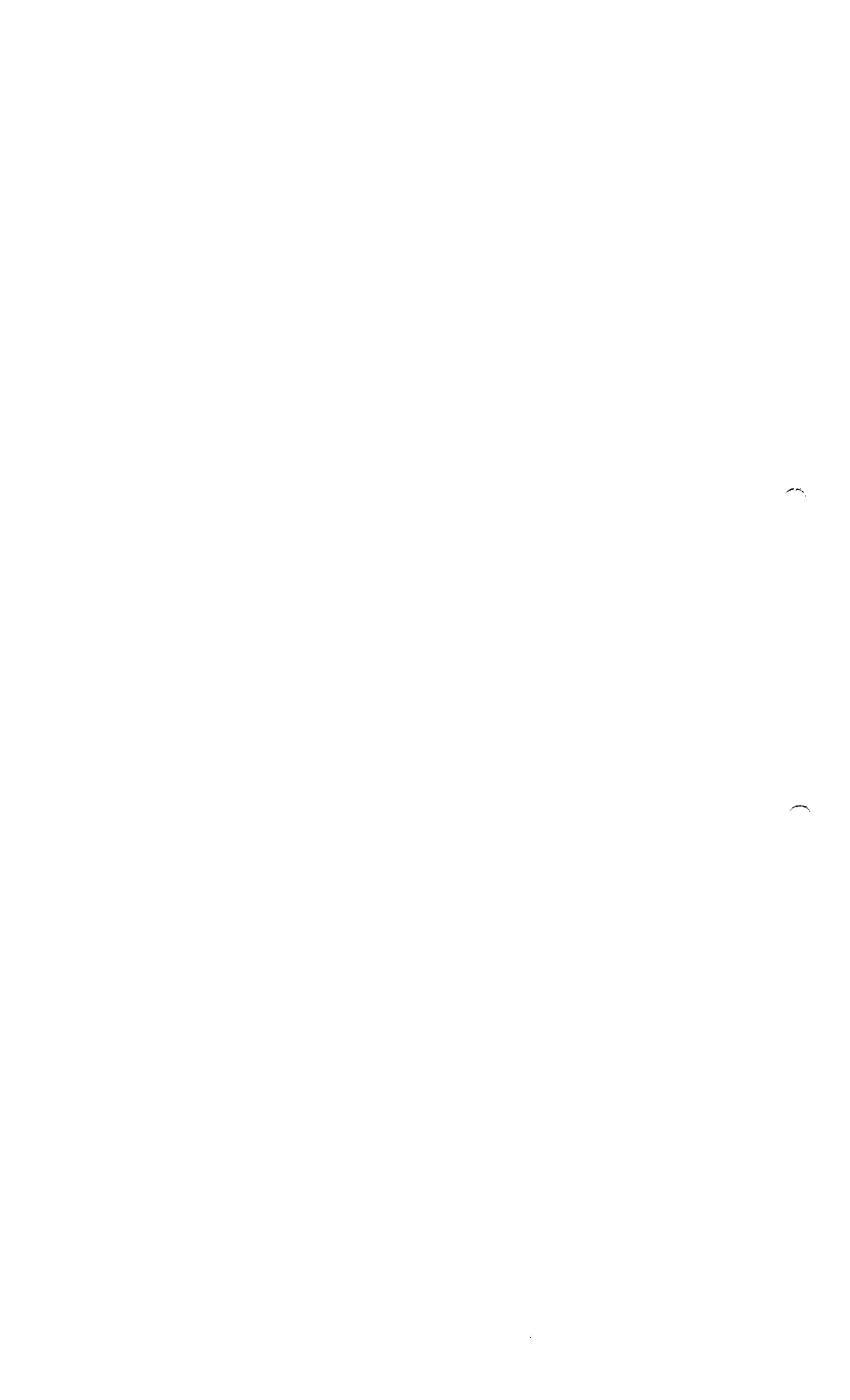


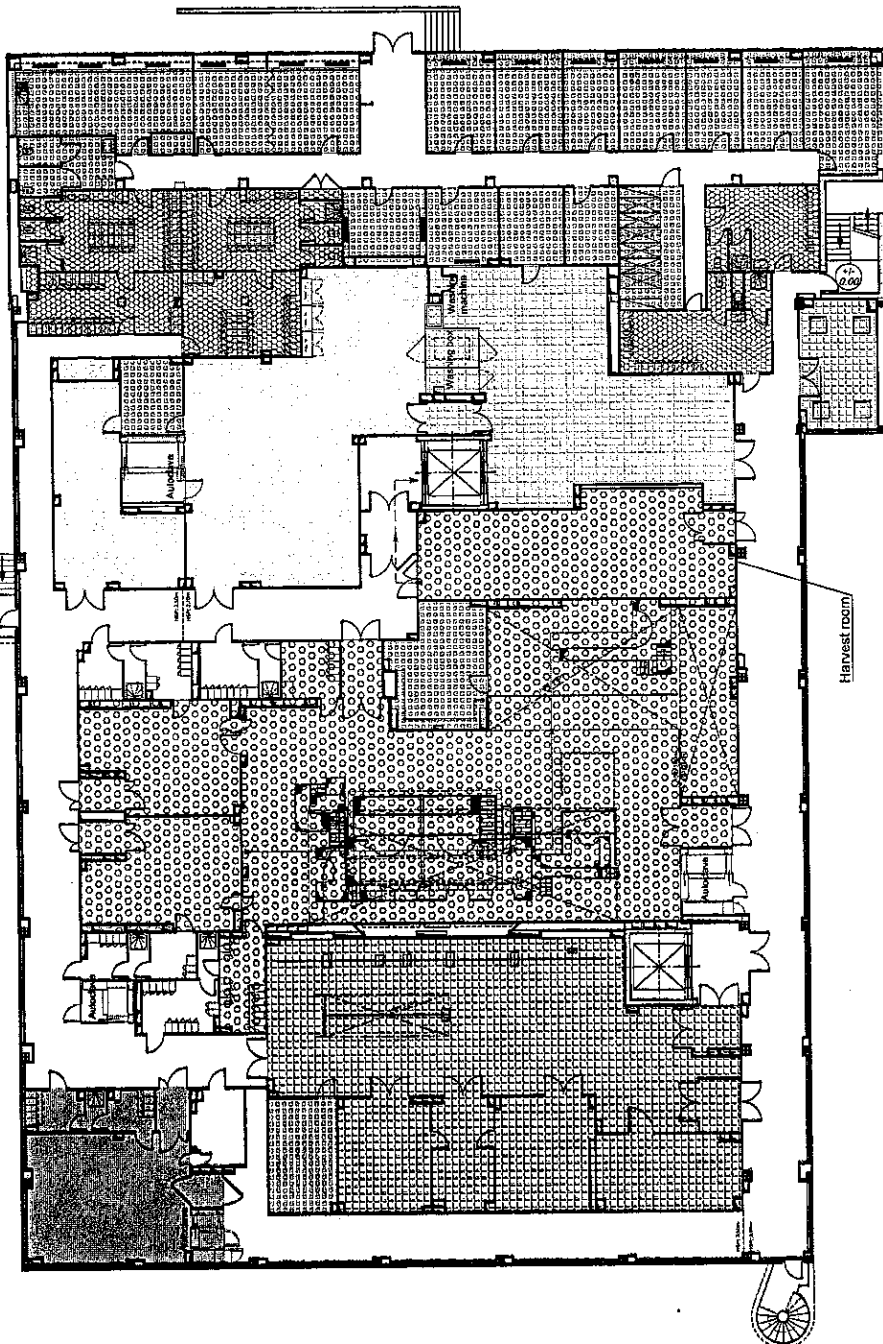
3.2.A.1

Bordetella pertussis Product Flow - Building V11 - Level 2

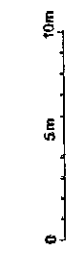

ROXANA MONTEMILONE
DIRECTORA TÉCNICA
SANOFI PASTEUR S.A.


CHRISTIAN DOMINGUEZ
APODERADO
SANOFI PASTEUR S.A.





- Offices
- Locker room
- Fermentation area
- Preculture area
- Preparation area
- Washing area
- Waste area
- Medium preparation area
- Not applicable



ROXANA MONTEMLONE CHRISTIAN LAMINGUEZ
 DIRECTORA TÉCNICA PODERADO
 SANOFI PASTEUR S.A. SANOFI PASTEUR S.A.

Building : **V11** Sub-Building : **2** Class : **Master TQC BPF**
 Discipline : **F Flux** Sub-Discipline : **.900 Flow-Control** Sheet Type : **.PL Plan view**
 Sub-Dis. Cat : **.PRO** Product
 Description : **Product flow for acellular Pertussis**

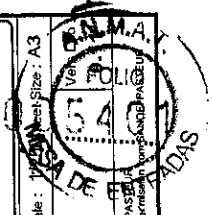
Layout Name : **03-PRO-A3** Scale : **1/200** Sheet Size : **A3**
 Drawing ID : **DRWFR_00010615**
 File Name : **V11_F900_2_PL04**

sanofi pasteur
 La division vaccins du Groupe sanofi-aventis.

BUREAU D'ETUDES : 1541 Av. Henri MENDEL
 CAMPUS MENDEL 92200 NANTY-LEZ-LILLE
 Tél. : 03 20 37 00 00
 Fax : 03 20 37 39 01

Drawings are the copyright property of SANOFI PASTEUR
 Reproduction of drawings, in part or in whole is forbidden without written permission


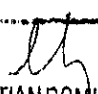
Modification	DATE	DESIGNER	FUNCTION	REASON
0.11	24 Oct 2009	Designer		
0.1		Design verifier		





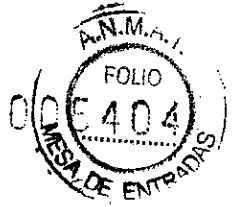
3.2.A.1

Personnel Flow - Building V11 - Level 2

 ROXANA MONTEMILONE DIRECTORA TÉCNICA SANOFI PASTEUR S.A.	 CHRISTIAN DOMÍNGUEZ APODERADO SANOFI PASTEUR S.A.
---	--







3.2.A.1

Clean and Soiled Equipment Flow - Building V11 - Level 2

ROXANA MONTEMLONE **CHRISTIAN DOMINGUEZ**
DIRECTORA TÉCNICA **APODERADO**
SANOPI PASTEUR S.A. **SANOPI PASTEUR S.A.**

