
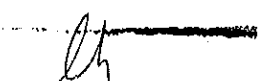
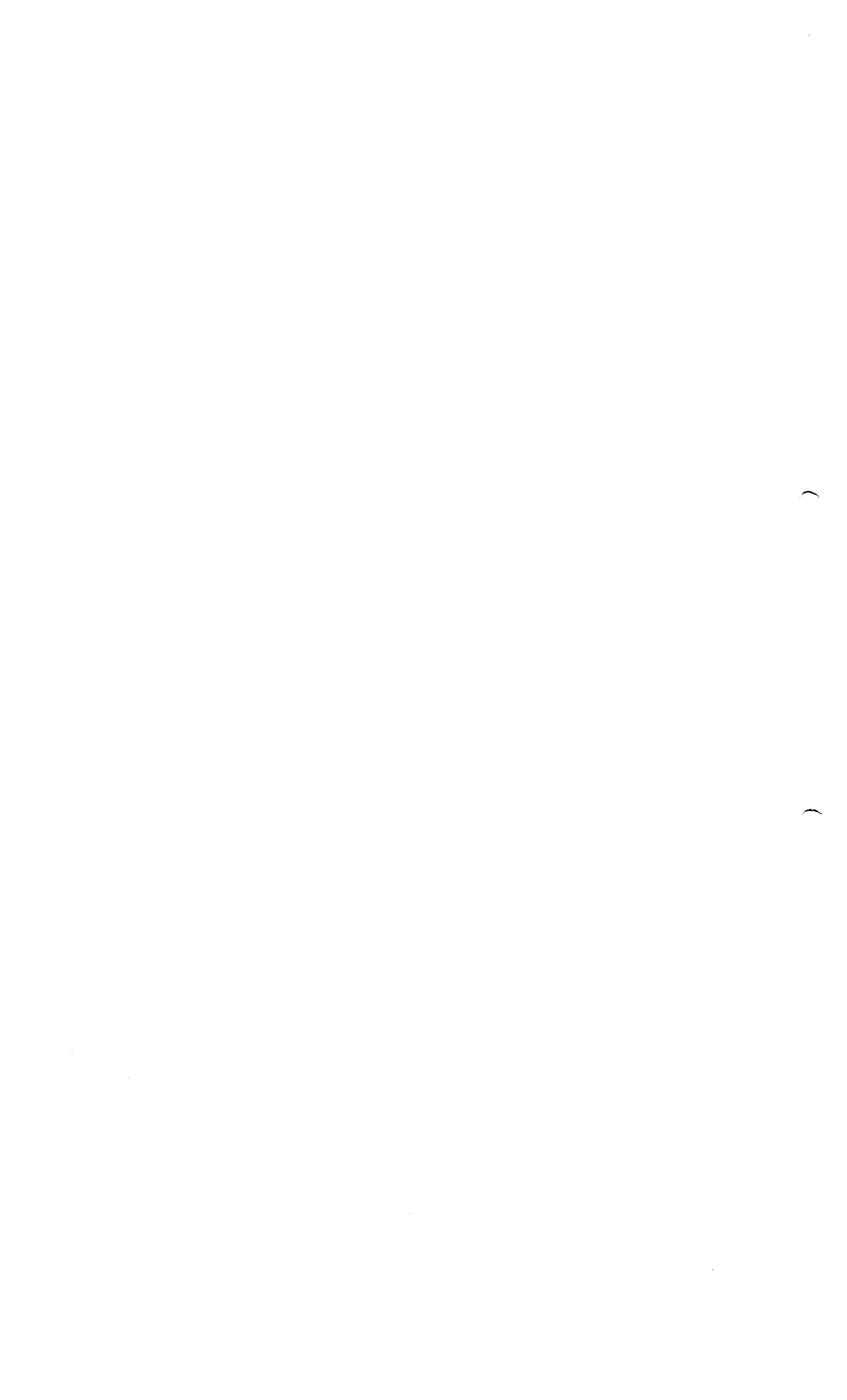
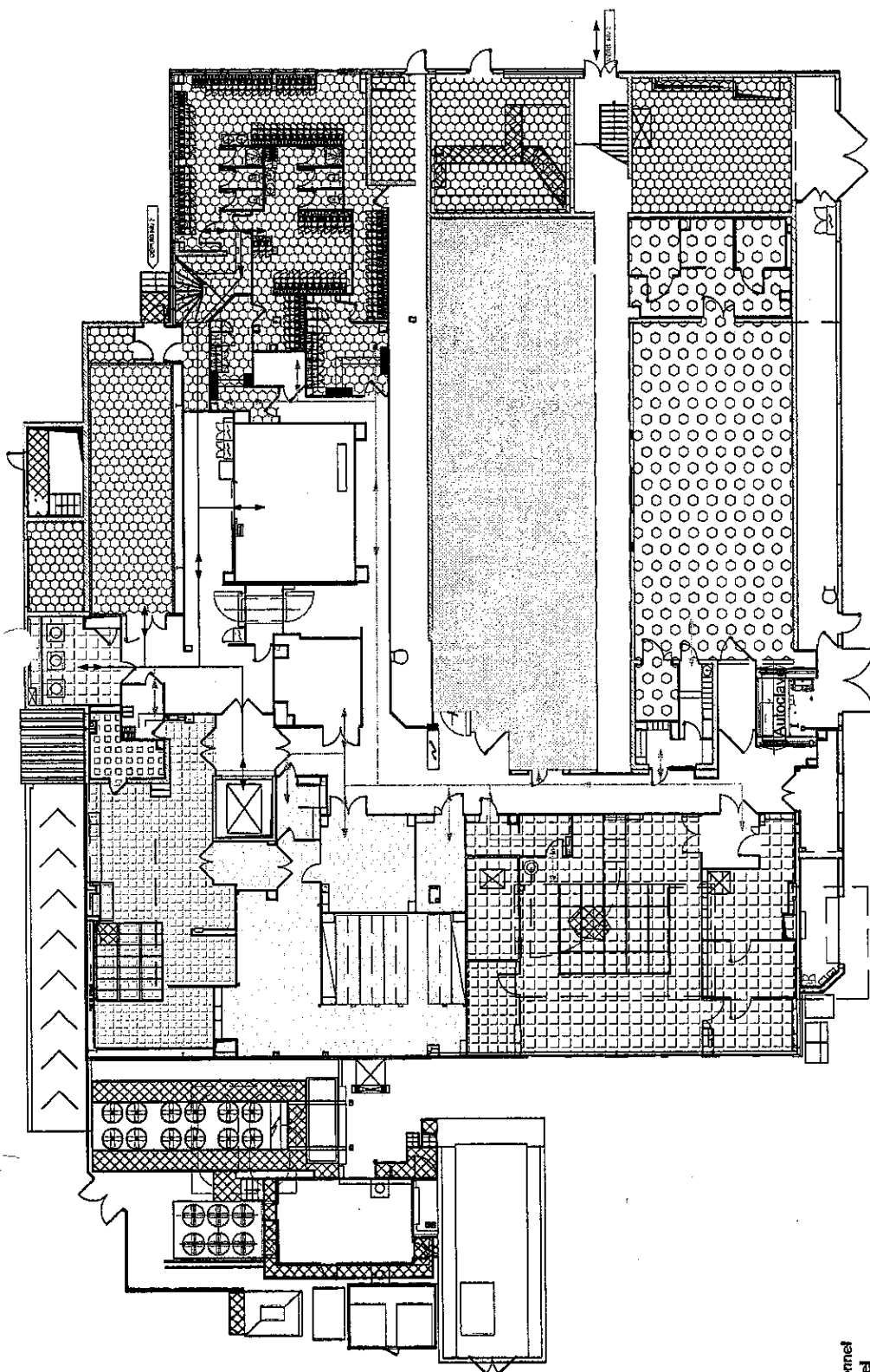


**3.2.A.1**

**Personnel Flow - Cetrimide Pellet - Building V4 - Level 1**

	
<b>ROXANA MONTEMILONE</b>	<b>CHRISTIAN DOMINGUEZ</b>
<b>DIRECTORA TÉCNICA</b>	<b>APODERADO</b>
<b>SANOFI PASTEUR S.A.</b>	<b>SANOFI PASTEUR S.A.</b>





- Medium preparation area
- Offices
- Cold room
- Utilities
- Locker room
- Waste area
- Fermentation area
- Preparation area
- Washing area
- Preculture area
- Not applicable

Zentis personnel  
 Cleanroom clothing personnel  
 Outdoor clothing personnel

**ROXANA MONTEMILONE**  
 DIRECTOR  
 SANOFI PASTEUR S.A.

**CHRISTIAN DOMINGUEZ**  
 AP  
 SANOFI PASTEUR S.A.

Building: **V4** Sub-Building: **1** Class: **Master TQC BPF**  
 Discipline: **F Flux** Sub-Discipline: **900 Flow-Control** Sheet Type: **.PL Plan view**  
 Sub-Disc: **-Cat: .PER** Personal  
 Description: **Personnel flow for Haemophilus influenzae type b**

Layout Name: **07-PER-A3** Scale: **1/200** Sheet Size: **A3**  
 Drawing ID: **DRWFR\_00010728**  
 File Name: **V4\_F900\_1\_PL05**

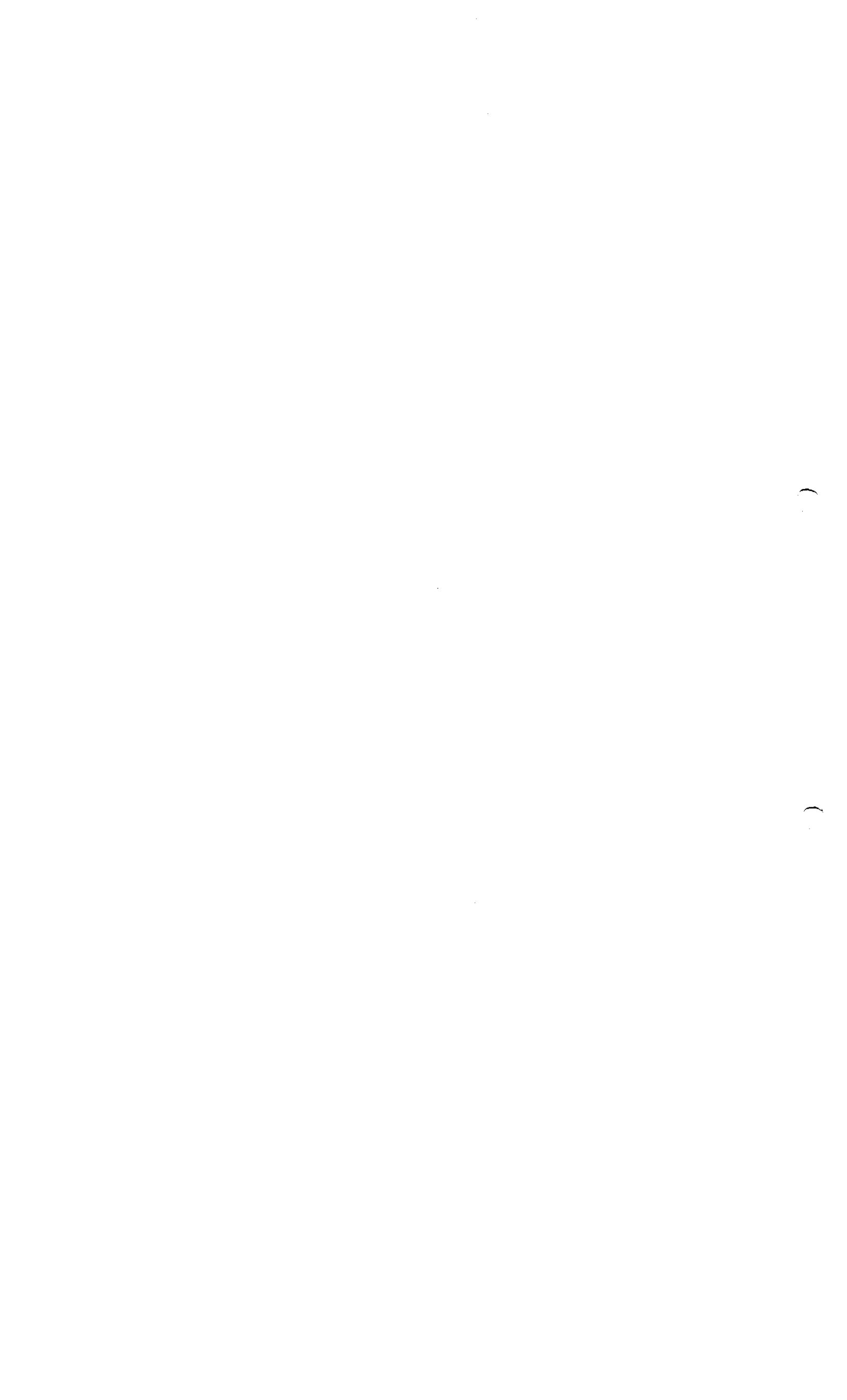
**sanofi pasteur**  
 La division vaccine du Groupe sanofi-aventis.

BUREAU D'ETUDES  
 SANOFI PASTEUR  
 29200 MARCY L'ETONNE  
 Tel: 04 37 37 01 00  
 Fax: 04 37 37 35 91

Reproductions of drawings, in part or in whole, is forbidden without written permission from SANOFI PASTEUR.



Modification	Date	Design	Design verifier	DATE - HOUR	REASON
1.15					
0.1					
Vers. L. 1.15 RÔLE: S.A.					



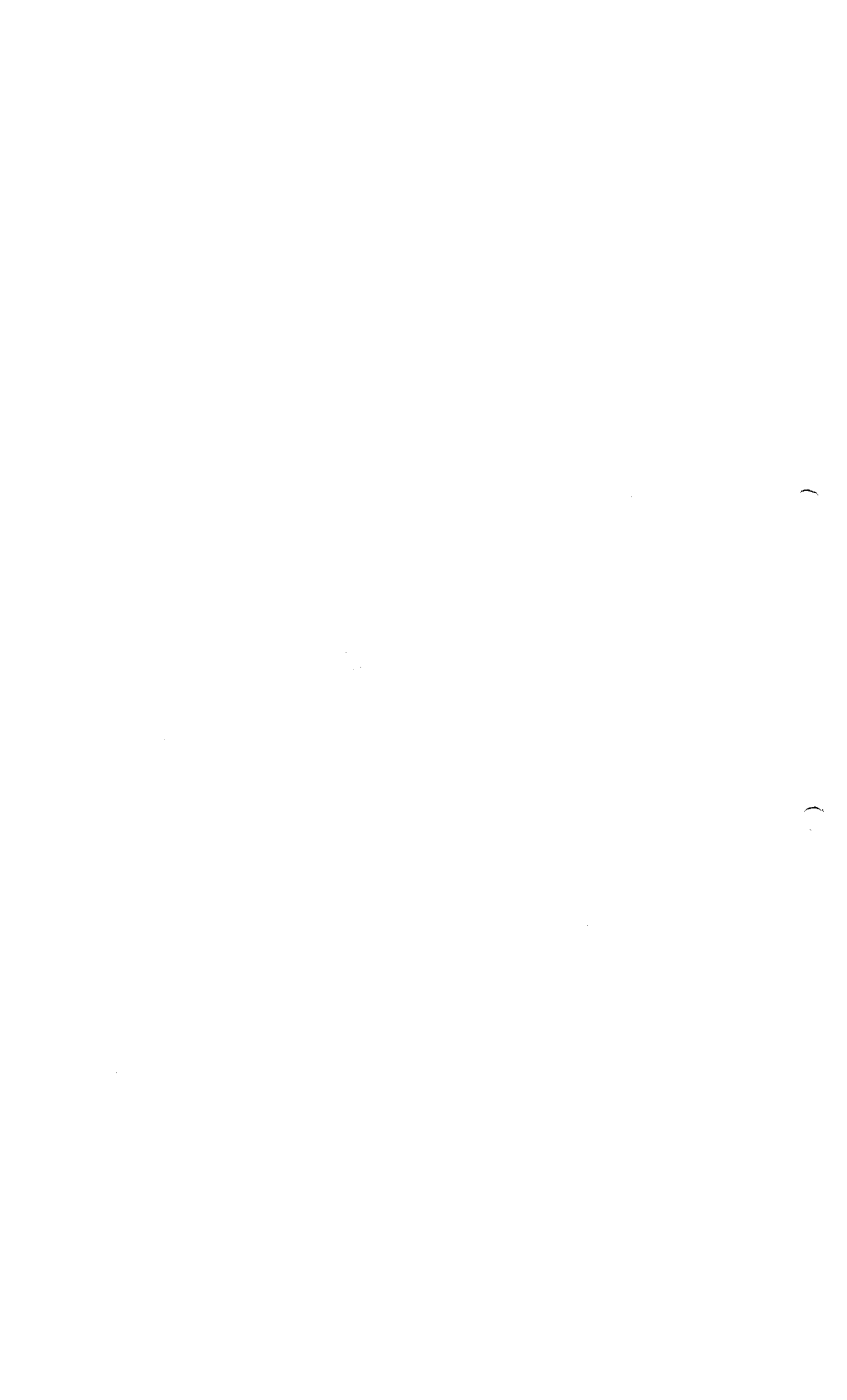


**3.2.A.1**

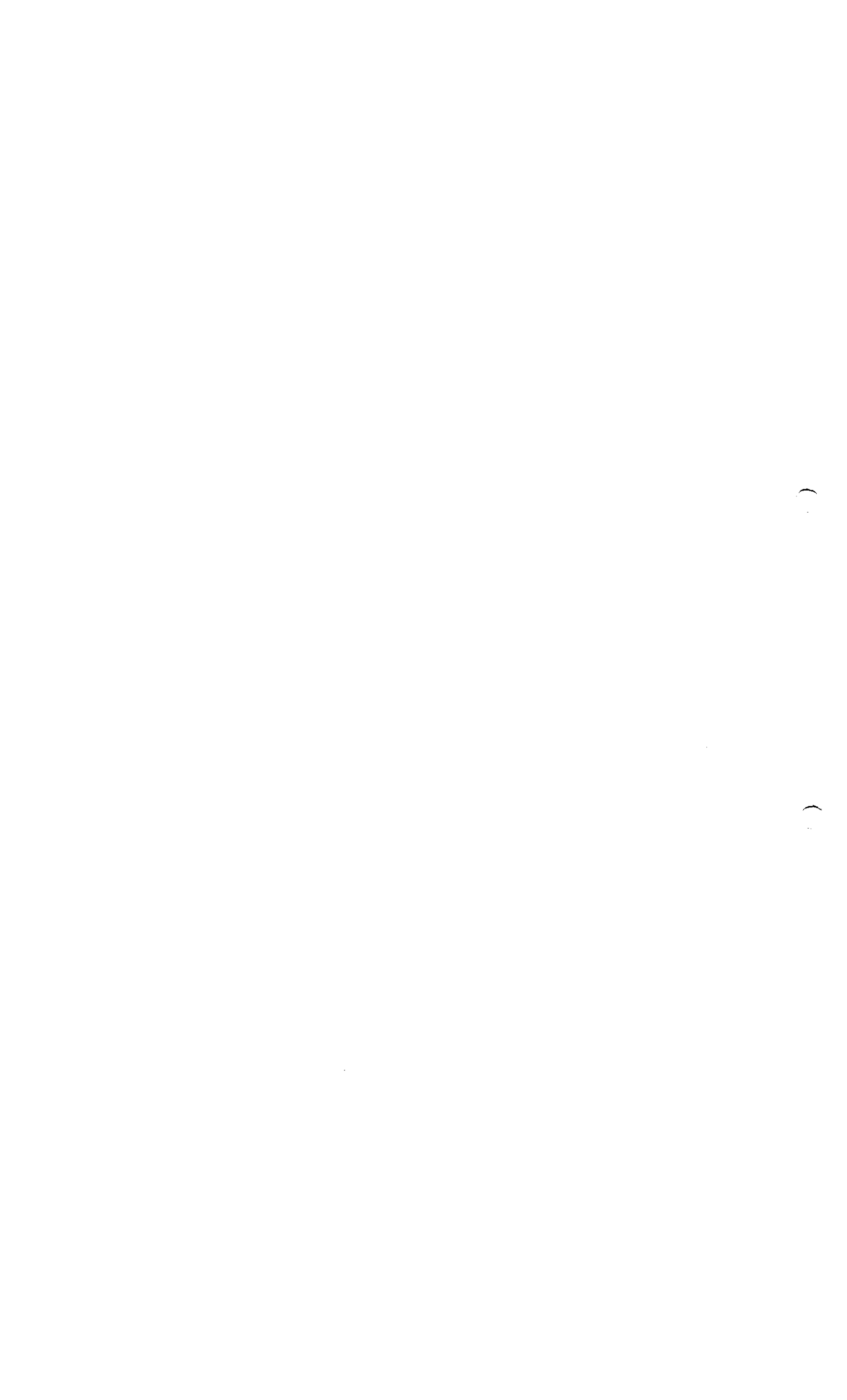
**Flow of Clean and Soiled Equipment - Ceftriaxone pellet - Building V4 - Level 1**

  
**ROXANA MONTEMILONE**  
DIRECTORA TECNICA  
SANOFI PASTEUR S.A.

  
**CHRISTIAN DOMINGUEZ**  
APODERADO  
SANOFI PASTEUR S.A.







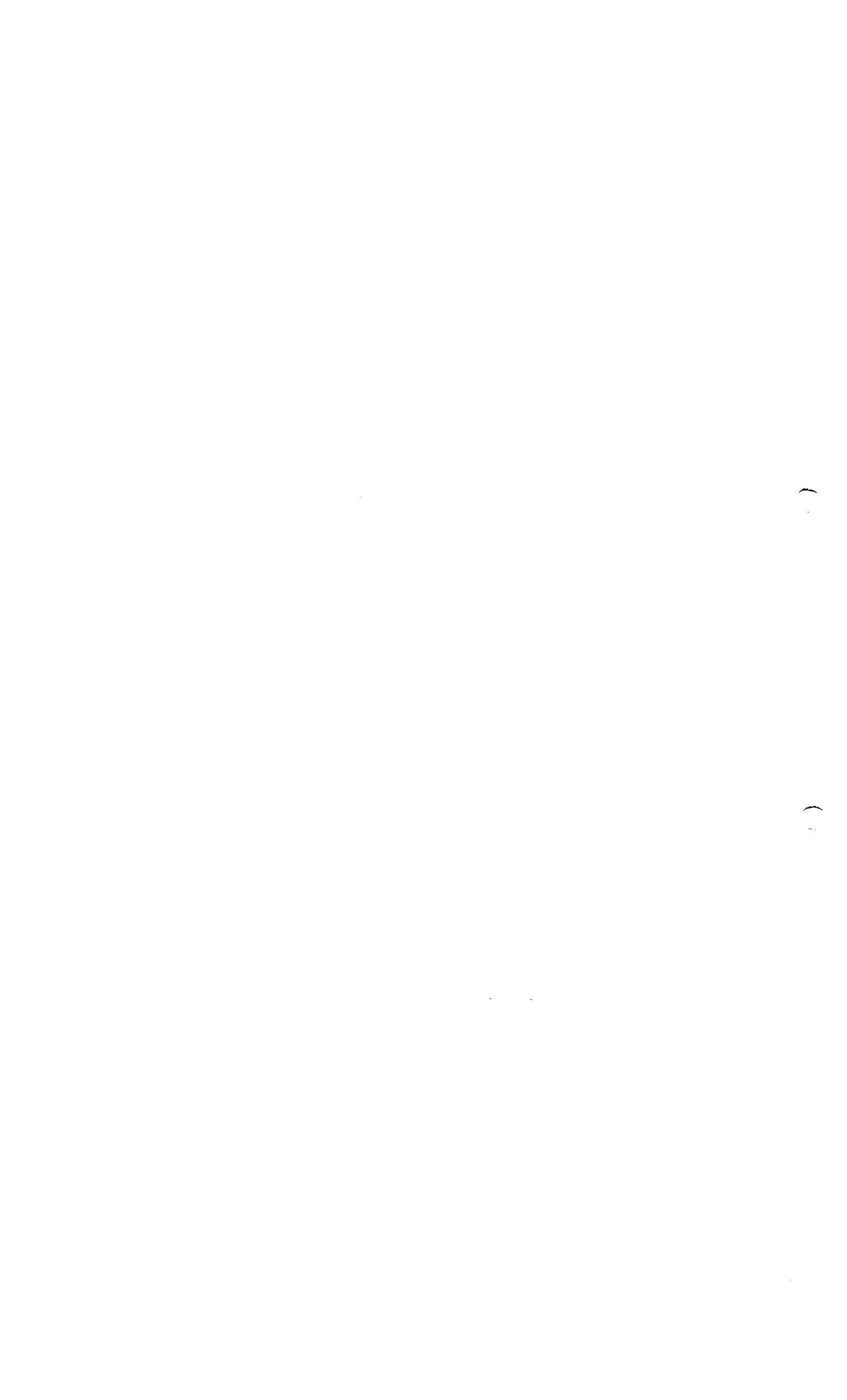
**3.2.A.1**

**Waste Flow - Ceftriaxone pellet - Building V4 - Level 1**

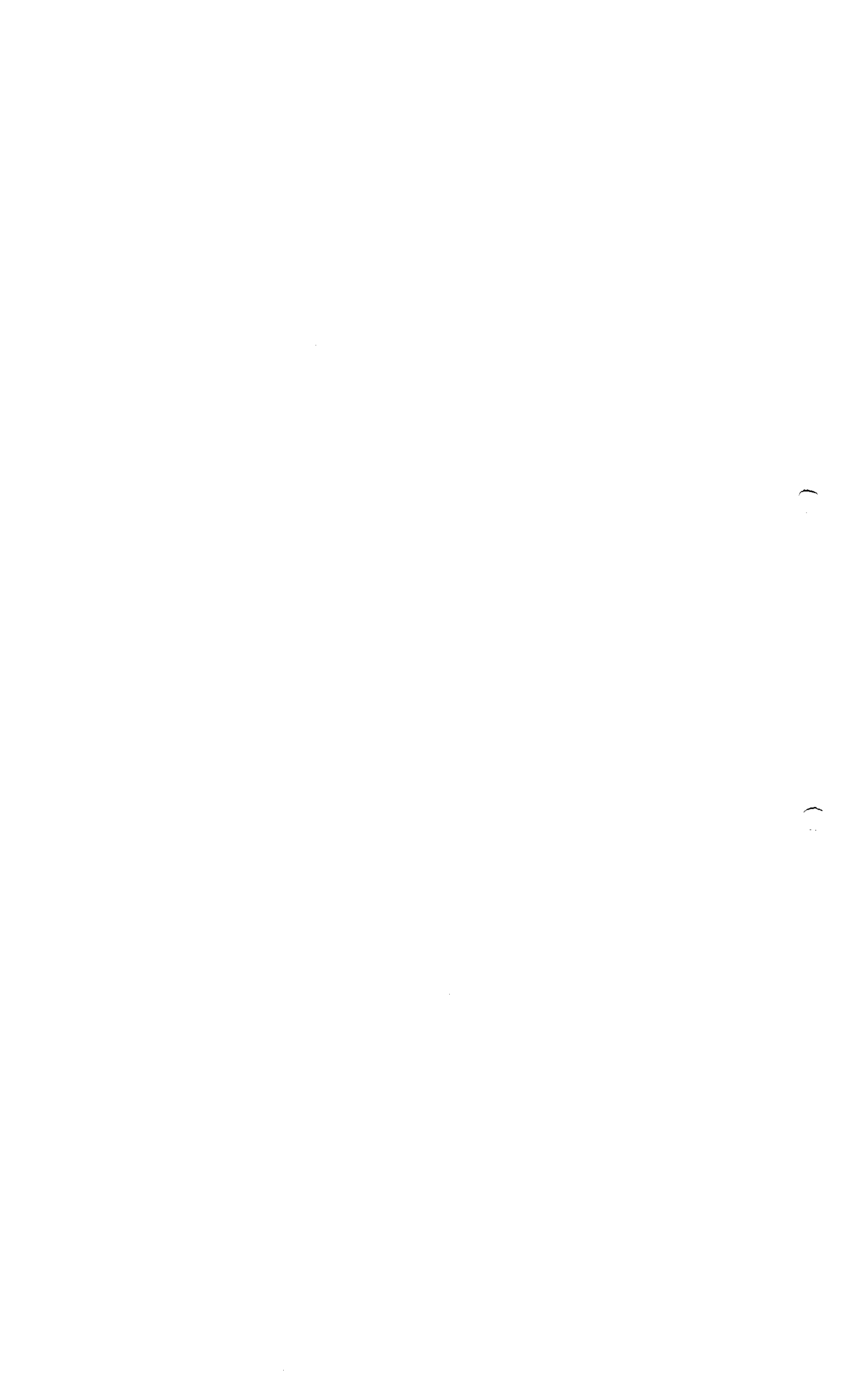
---

 **ROXANA MONTEMILONE**  
DIRECTORA TÉCNICA  
SANOFI PASTEUR S.A.

 **CHRISTIAN DOMINGUEZ**  
APODERADO  
SANOFI PASTEUR S.A.









**3.2.A.1**

**Crude Diphtheria Toxoid Product Flow - Building V4 - Level 0**

  
ROXANA MONTEMILONE  
DIRECTORA TÉCNICA  
SANGUI PASTEUR S.A.

  
CHRISTIAN DOMINGUEZ  
APODERADO  
SANGUI PASTEUR S.A.







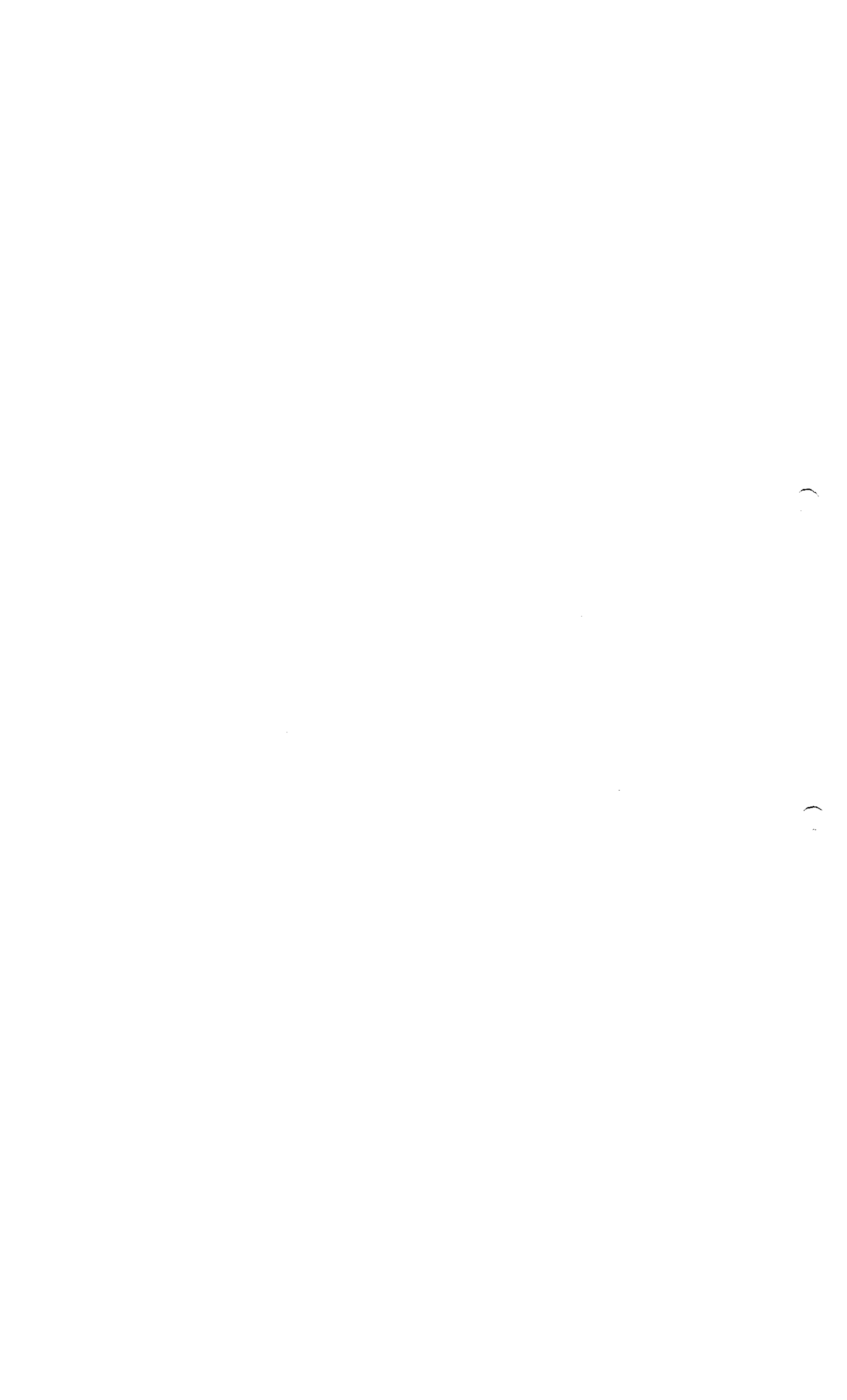


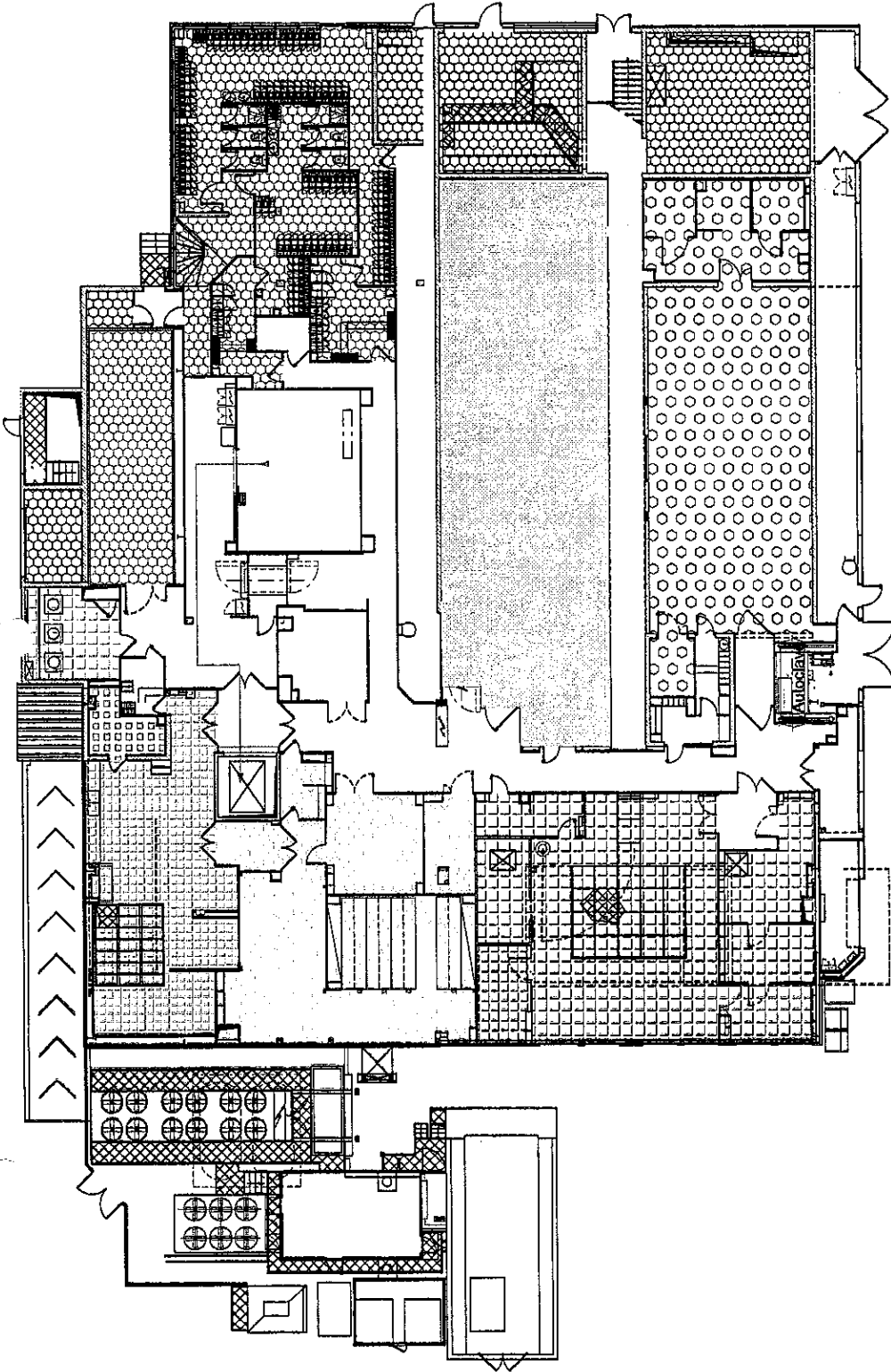
**3.2.A.1**

**Crude Diphtheria Toxoid Product Flow - Building V4 - Level 1**

---

**ROXANA MONTEMILONE** **CHRISTIAN DOMINGUEZ**  
**DIRECTORA TÉCNICA** **APODERADO**  
**SANOFI PASTEUR S.A.** **SANOFI PASTEUR S.A.**





- Medium preparation area
- Offices
- Cold room
- Utilities
- Locker room
- Waste area
- Fermentation area
- Preparation area
- Washing area
- Preculture area
- Not applicable

ROXANA MONTEMILONE  
 DIRECTORA TECNICA  
 SANOFI PASTEUR S.A.

CHRISTIAN BARRAL  
 INGENIERO  
 SANOFI PASTEUR S.A.

Building: **V4** Sub-Building: **F Flux** Floor: **1** class: **Master TQC BPF**  
 Discipline: **F Flux** Sub-Discipline: **.900 Flow-Control** Sheet Type: **.PL Plan view**  
 Sub-Disc: **.PRO** Product: **Product flow for Diptheria**  
 Description: **Product flow for Diptheria**

Layout Name: **03-PRO-A3** Scale: **1/200**  
 Drawing ID: **DRWFR\_00010728**  
 File Name: **V4\_F900\_1\_PL05**

**sanofi pasteur**  
 La division vaccins du Groupe sanofi-aventis.  
 BUREAU D'ETUDES  
 CAMPUS HERBET  
 55280 MARCY-LETOILE  
 Tel: (0) 37 37 91 00  
 Fax: (0) 37 37 39 01

Modification	Date	Author	Function	Reason
1.15	20 Apr 2007	Fabrice LAYTON	Designer	
0.1	16 Oct 2006	Fabrice LAYTON	Designer	







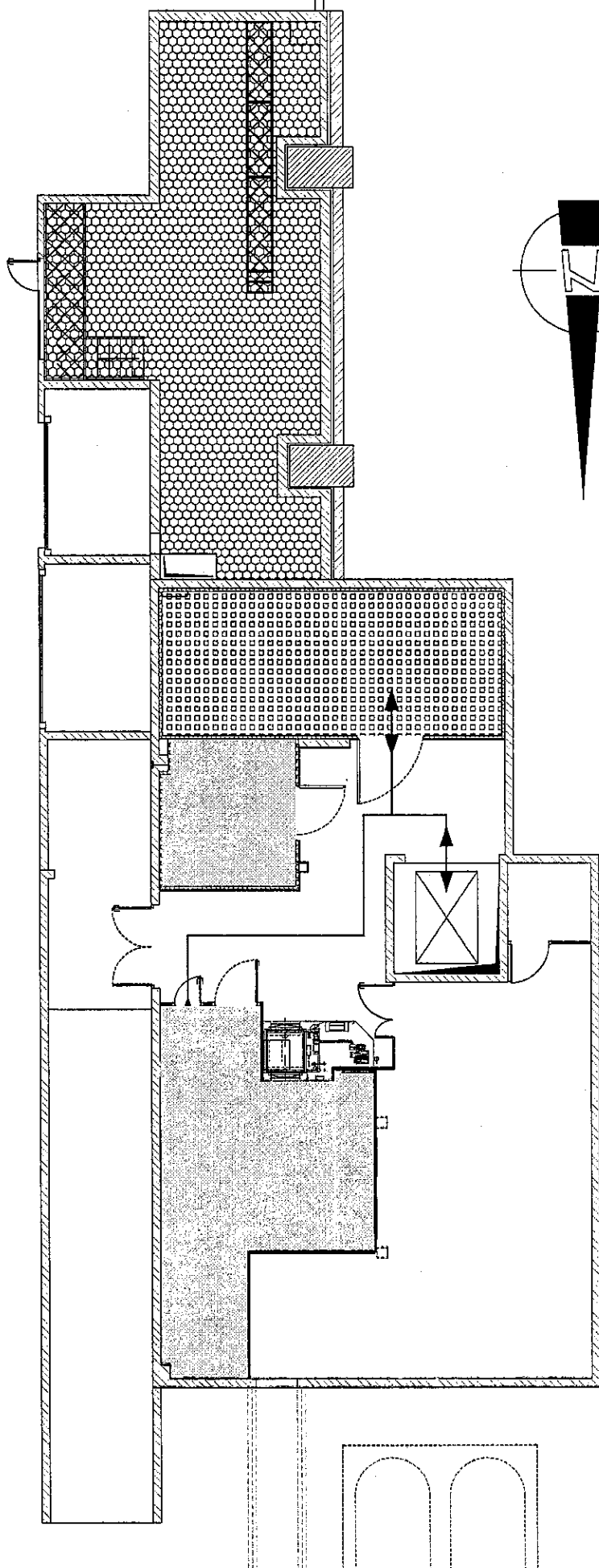
**3.2.A.1**

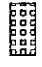
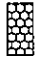


**Personnel Flow - Crude Diphtheria Toxoid - Building V4 - Level 0**

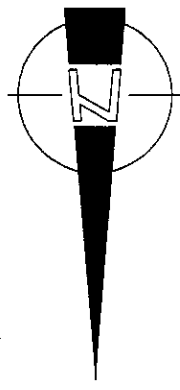
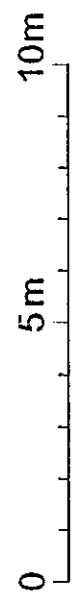
  
ROXANA MONTEMILONE  
DIRECTORA TECNICA  
SANOFI PASTEUR S.A.

  
CHRISTIAN DOMINGUEZ  
APODERADO  
SANOFI PASTEUR S.A.





-  Detoxification area
-  Utilities
-  Not applicable
-  Personnel



ROXANA MONTEMILONE  
DIRECTOR TÉCNICA  
SANOFI PASTEUR S.A.

CHRISTIAN DOMÍNGUEZ  
APODERADO  
SANOFI PASTEUR S.A.

Building : <b>V4</b>	Sub-Building :	Floor : <b>0</b>	Class : <b>Master TQC BPF</b>
Discipline : <b>F Flux</b>	Sub-Discipline : <b>-900 Flow-Control</b>	Sheet Type : <b>.PL</b>	Plan view
Sub-Dis.-Cat : <b>.PER</b>	Personal	Layout Name : <b>07-PER-A3</b>	Scale : <b>1/100</b>
Description : <b>Personnel flow for Diphteria</b>		Drawing ID : <b>DRWFR_00010725</b>	Sheet Size : <b>A3</b>
		File Name : <b>V4_F900_0_PL05</b>	Veris Lab <b>6.25</b>

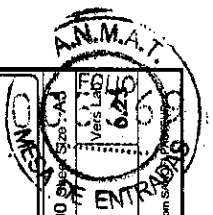
**sanofi pasteur**  
La drošnost vakcínab. Groupe sanofi-aventis.

BUREAU D'ÉTUDES  
CAMPUS MERIEUX 1581, Av. Hirsch MERIEUX  
69280 MARCY L'ÉTOILE

Tel : 04 37 01 01  
Fax : 04 37 00 91

Reproduction of drawings, in part or in whole is forbidden without written permission from SANOFI PASTEUR

Modification	DATE - HOUR	DESIGNER	DESIGN VERIFIER	APPR DATE	INACTIV DATE	REASON
0.23	19/05/2011					
0.1						
Veris, L						
ROLE :						







**3.2.A.1**

**Personnel Flow - Crude Diphtheria Toxoid - Building V4 - Level 1**

  
ROXANA MONTEMLONE  
DIRECTORA TÉCNICA  
SANOFI PASTEUR S.A.

  
CHRISTIAN DOMINGUEZ  
APODERADO  
SANOFI PASTEUR S.A.





