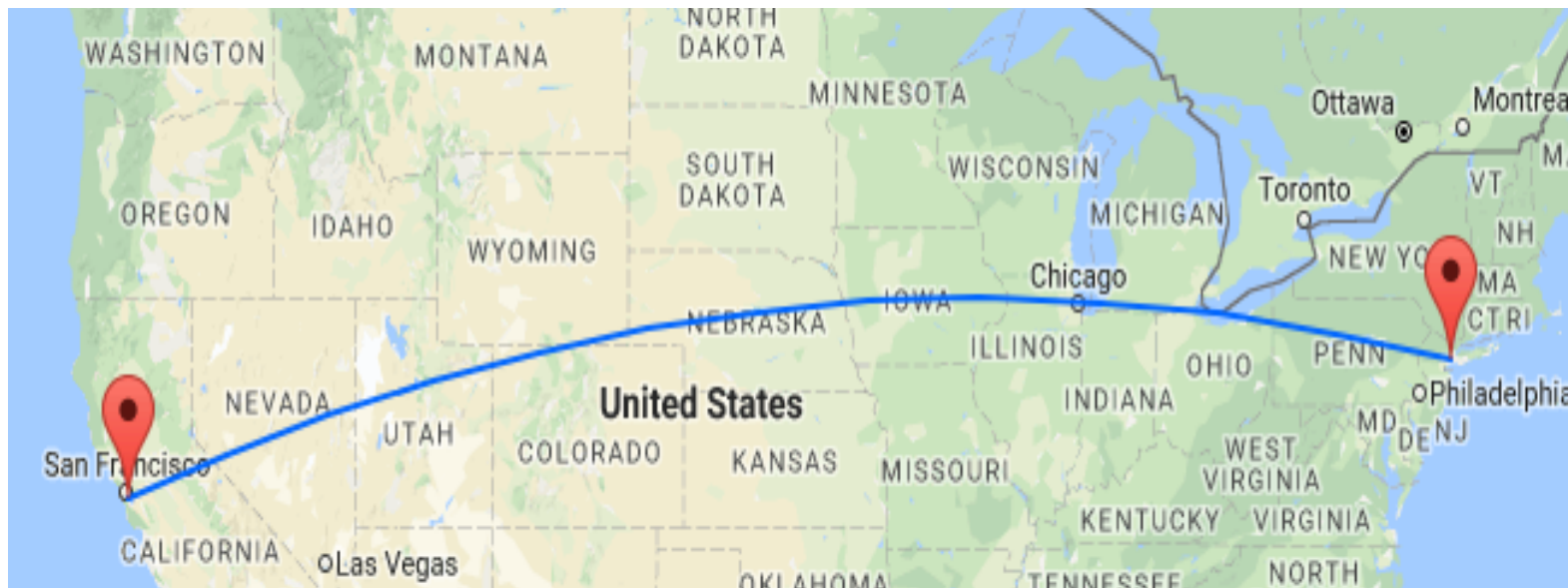




en route

#461 **en route** (adverb) /en rout/

**We stopped in  
Philadelphia en route  
(*on the way*) to New York.**





# epitaph

**#462 epitaph (noun) /ep i taf/**

**This is an interesting epitaphs  
(a phrase [can be on a tombstone]  
about the deceased),**

**“The highest tribute to  
the dead is not grief  
but gratitude.”**

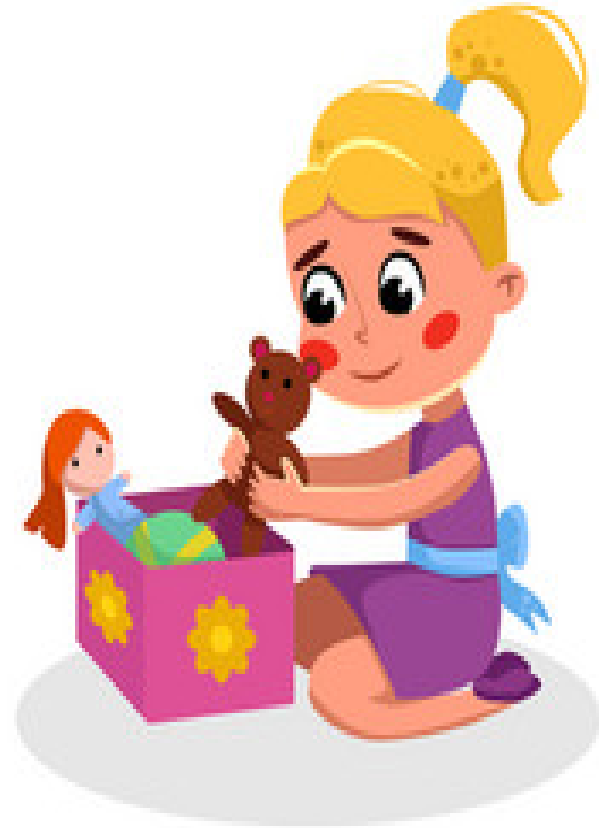




epitome

#463 **epitome** (noun) /i pit u mē/

She is the epitome  
*(something or  
someone that is  
a perfect example)*  
of good  
behavior.

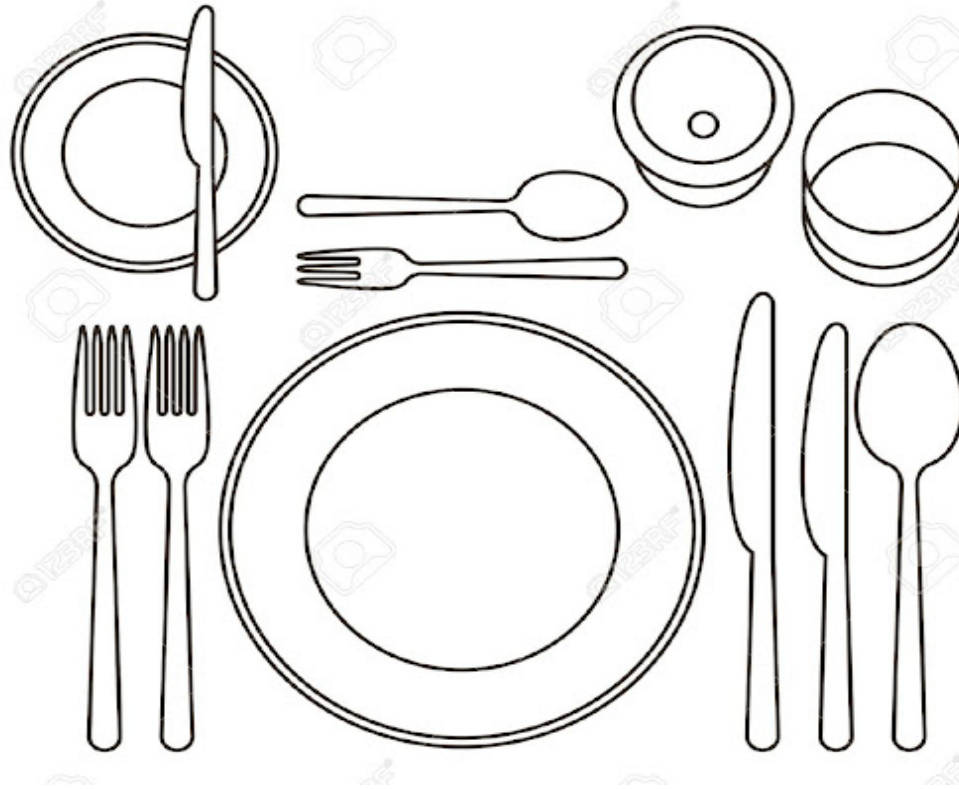


**etc.**

**et cetera**

#464 **et cetera** (adverb) /et se ter u/

Please buy some  
oranges, apples, grapes,  
strawberries, bananas,  
et cetera (*and other things that  
are similar, abbreviation etc*).



etiquette

#465 **etiquette** (noun) /et i kit/

Saying please and thank  
you are examples of  
etiquette

*(proper behavior  
around others).*





# euphemism



**#466 euphemism** (noun) /you fu mizm/

**A common euphemism**

*(substituting a harsh word or  
statement for something nicer)*

**is to call an old person  
a senior citizen.**



# exorbitant

#467 **exorbitant** (adjective) /ig zor bi tent/

The ticket prices were  
exorbitant (*unreasonably high*).





facade

**#468 facade (noun) /fu sod/**

**The bricks on the facade**

*(the front of a building)*

**need to be repaired.**

**(noun) Her happiness is just a facade**

*(to mislead someone on how you feel).*



fiancée

#469 **fiancée** (noun) /fē on sây/

He is letting his fiancée

*(a lady engaged to be married)*

plan the wedding.



**Fiancé** is masculine.



470



gauche

#470 **gauche** (adjective) /gōsh/

**So much modern art is**  
**gauche** (*tacky or lacking social grace*).

