

Write the answer
on your whiteboard.

**dead
death**



SW #189 & #190

Dead can be
a noun,
an adjective
or an adverb.



Death is always
a noun.



If you see *to* _____,
expect the next word
to be *death*.

*Get ready for
round one!*



ROUND

1

dead death



**We see a
_____ bug.**

dead

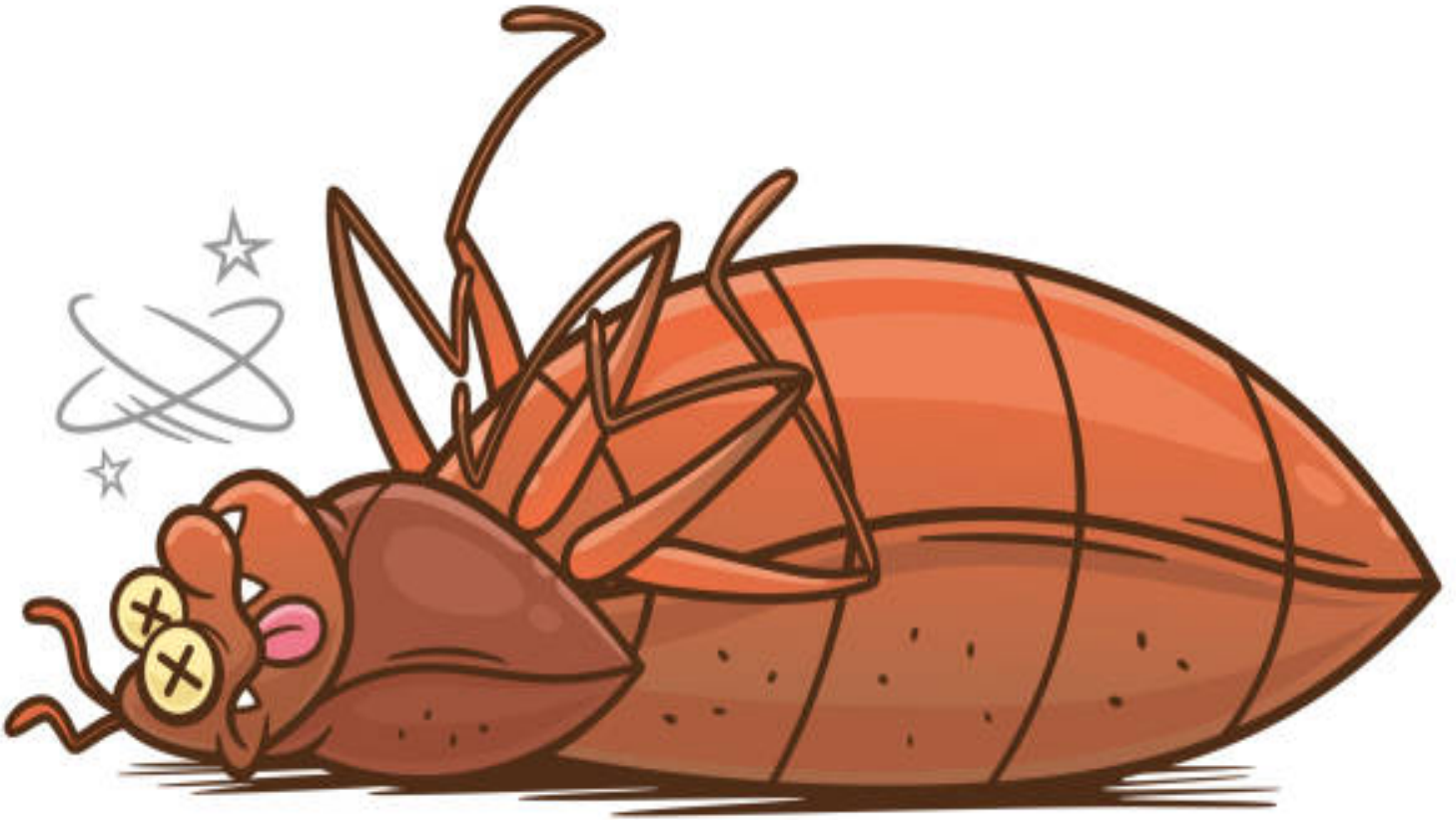


**We see a
dead bug.**

ROUND

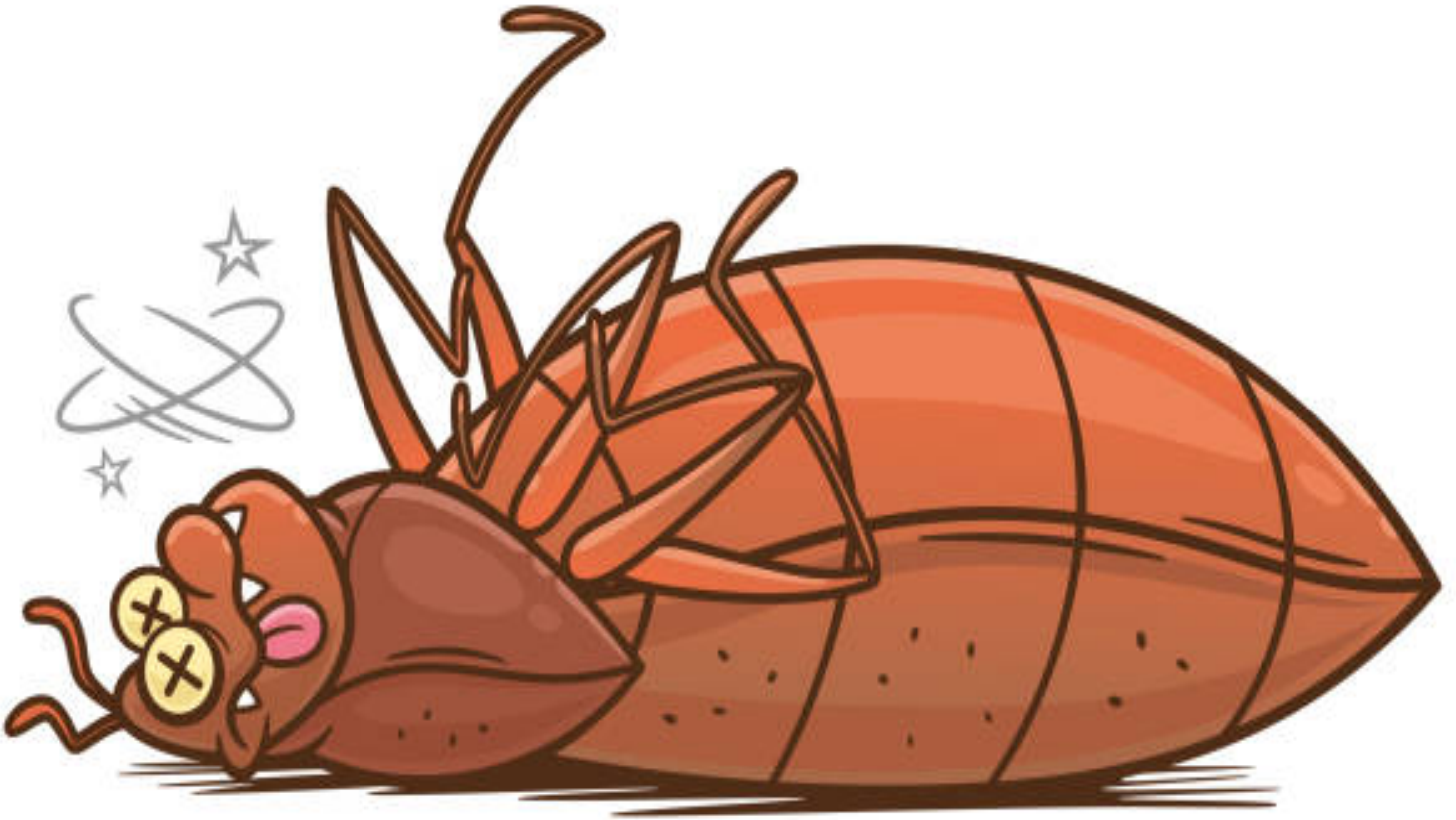
2

dead death



**Yes, the bug
is .**

dead



**Yes, the bug
is **dead.****

ROUND

3

dead death



Smoking was the cause of

death



**Smoking was
the cause of
death.**

ROUND

4

dead death



**She is
tired.**

dead



She is
dead tired.

ROUND

5

dead death



We are *bored*
to !

death



**We are *bored*
*to death!***

ROUND

6

dead death



**Be patient,
you're not
going to *starve*
to .**

death



**Be patient,
you're not
going to *starve*
to *death*.**

ROUND

7

dead death



**Please replace
the
battery.**

dead



**Please replace
the **dead**
battery.**

ROUND

8

dead death



**Your parents
were *worried*
to **!****

death



**Your parents
were worried
to *death*!**

ROUND

9

dead death



**Show respect
to the .**

dead



**Show respect
to the dead.**

ROUND

10

dead death



Valley
is located in
California.

Death



Death Valley
is located in
California.

