

I am...

We are...

You are...

They are...

Use the verb **BE**
after a modal verb.

Can **be**...

Could **be**...

Shall **be**...

Should **be**...

May **be**...

Might **be**...

Must **be**...

Will **be**...

Would **be**...

am be are



I mad!

am



I am mad!

am be are



**We
scared.**

are



**We are
scared.**

am be are



**They _____
hungry.**

are



**They are
hungry.**

am be are



**I could _____
drawing.**

be



I could be
drawing.

am be are



**We
surprised.**

are



**We are
surprised.**

am be are



**You must _____
hiding.**

be



You **must** **be**
hiding.

am be are



**He might _____
winning?**

be



He might be
winning?

am be are



We
painting.

are



**We are
painting.**

am be are



**She might _____
losing.**

be



She might be
losing.

am be are



**They _____
thirsty.**

are



**They are
thirsty.**

am be are



**It might _____
jumping?**

be



It might be
jumping?

am be are



**I may _____
sleeping?**

be



I may be
sleeping?

am be are



You
sad.

are



You are
sad.

am be are



**You should
_____ smiling.**

be



**You should
be smiling.**

am be are



**I
happy!**

am



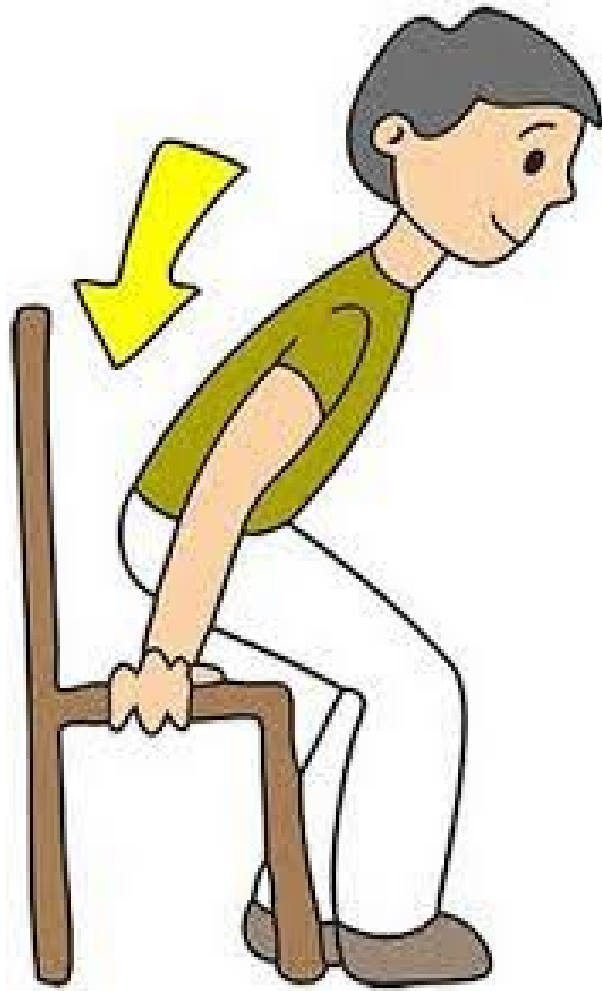
**I am
happy!**

am be are



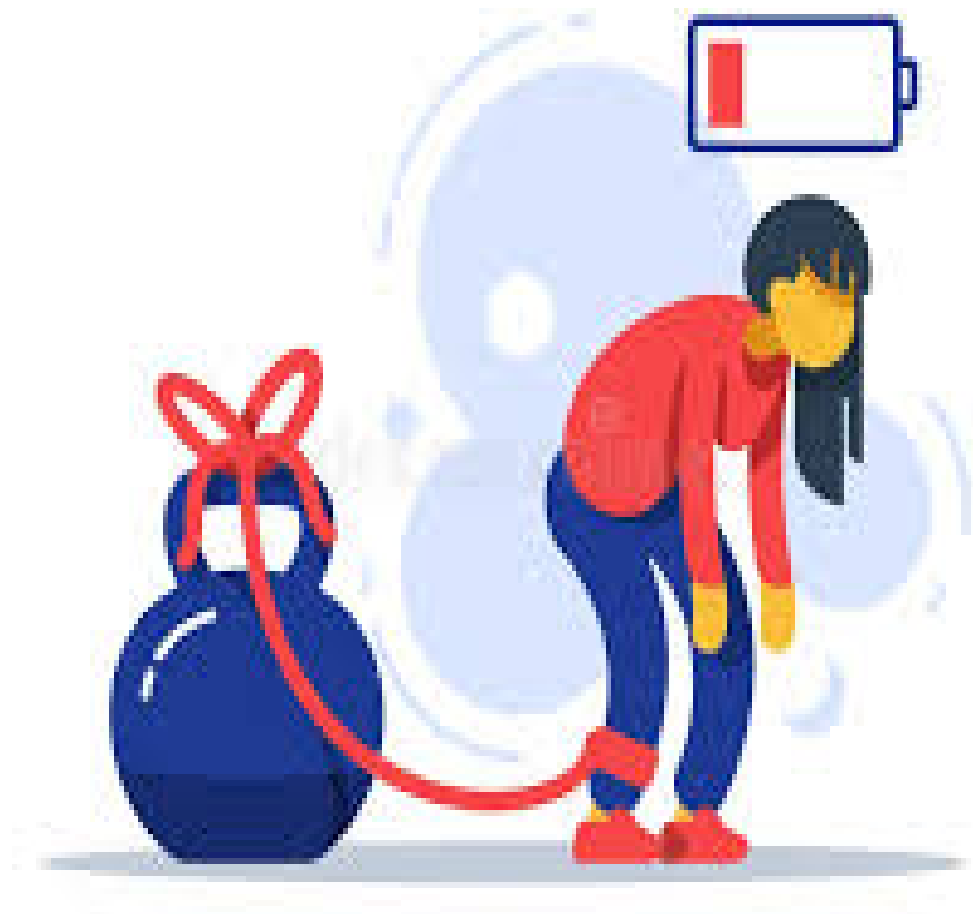
**I should _____
standing.**

be



I should be
standing.

am be are



You
tired.

are



**You are
tired.**

am be are



**You could
playing.**

be



You could be
playing.

am be are



They _____
working.

are



They are
working.

am be are



**We shall _____
kissing.**

be



**We shall be
kissing.**

