



fatigue

#221 **fatigue** (noun)

Driving for twenty hours caused **great fatigue** (*tired, mental or physical*).





tongue

#222 **tongue** (noun)

**Don't stick out your
tongue.**





vague

223 **vague** (adjective)

He was vague (*not clear*)
with his instructions.



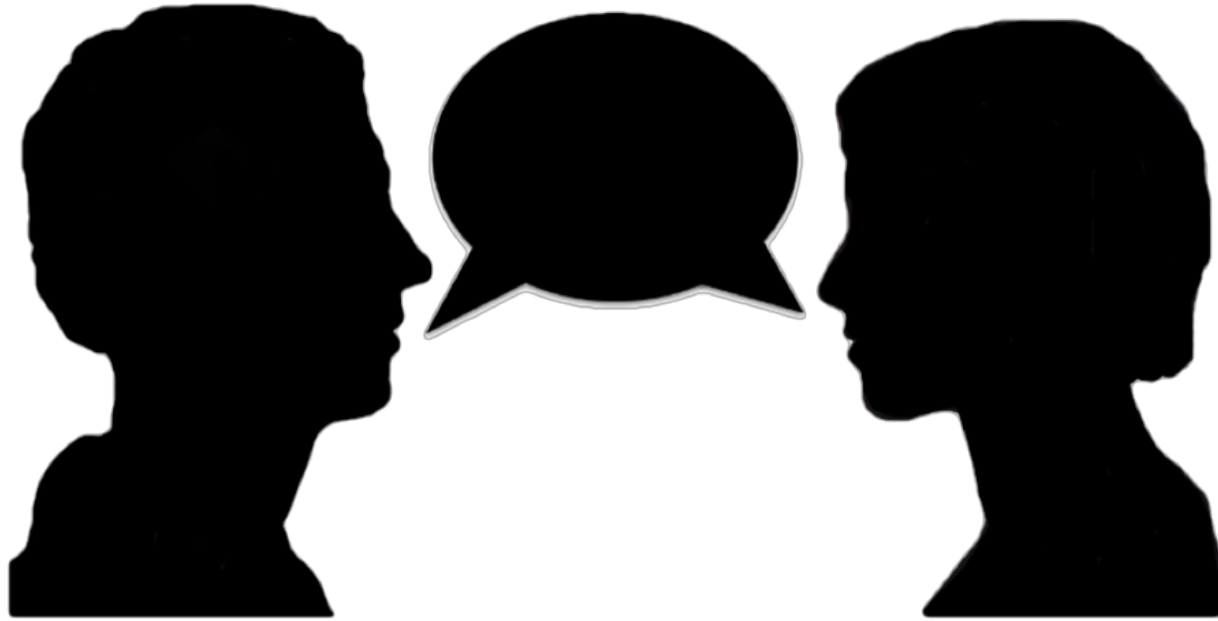


plague

#224 plague (noun)

**The plague is a disease
that can cause death.**





dialogue

#225 dialogue (noun)

**The TV show had a
funny dialogue**

(two or more people having a conversation).





intrigue

#226 **intrigue** (verb)

Does that idea intrigue
(to make curious) you?





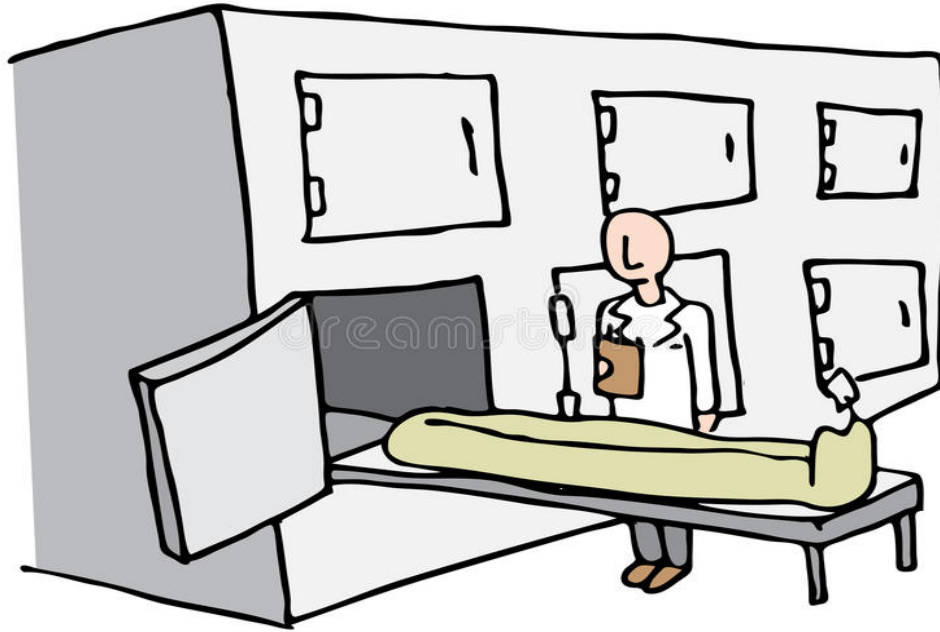
league

#227 league (noun)

The National Football League is a popular sport.

**(A group of sports clubs that play each other
over a period for a championship.)**





morgue

#228 **morgue** (noun)

A morgue is a place where dead bodies are kept.





office

#229 office (noun)

Go to the principal's office

(a room with a specific purpose).

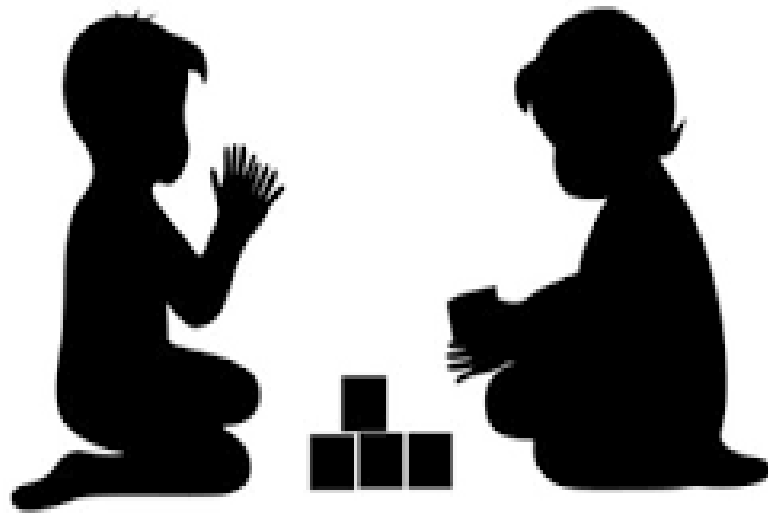




notice

#230 **notice** (verb)

Did you **notice** (*see*)
how nice they are playing?



(noun) They may change the plans without
notice (*warning*).