

**ch + est = chest**



**This is a  
treasure chest.**

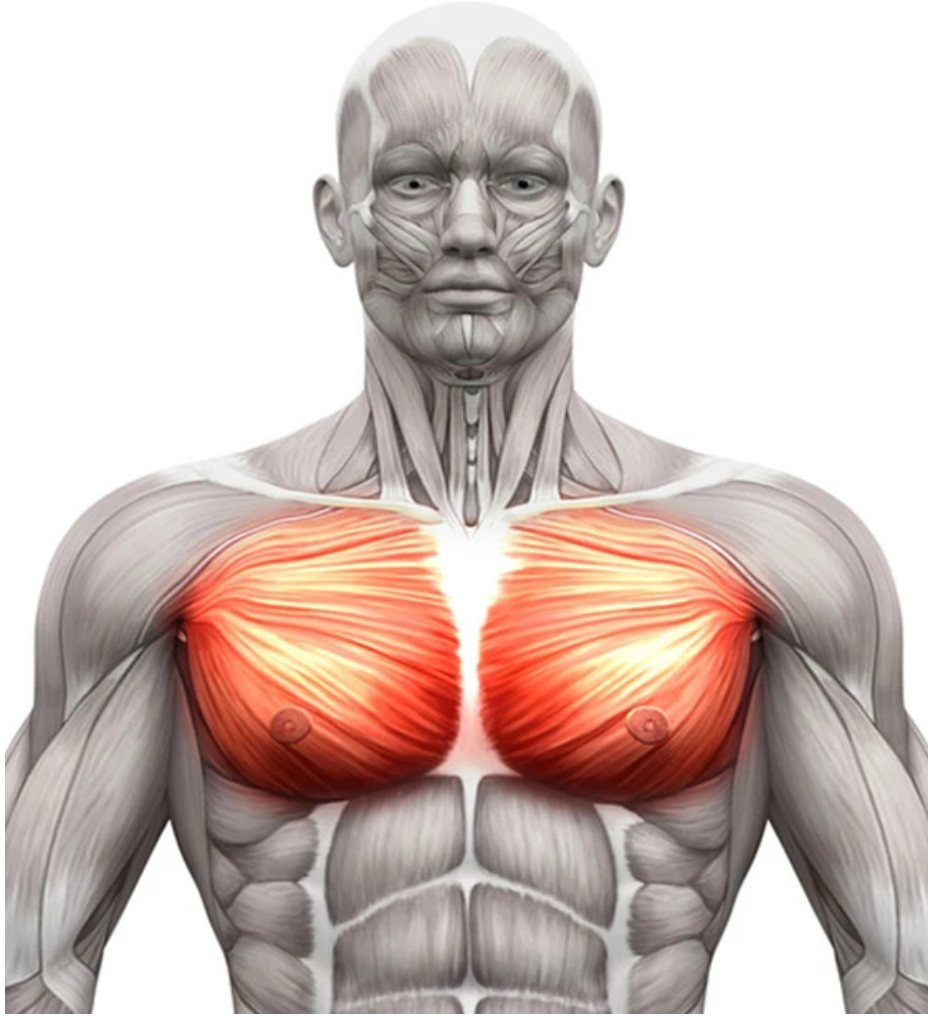
**ch + est = chest**



**The chest  
is locked.**

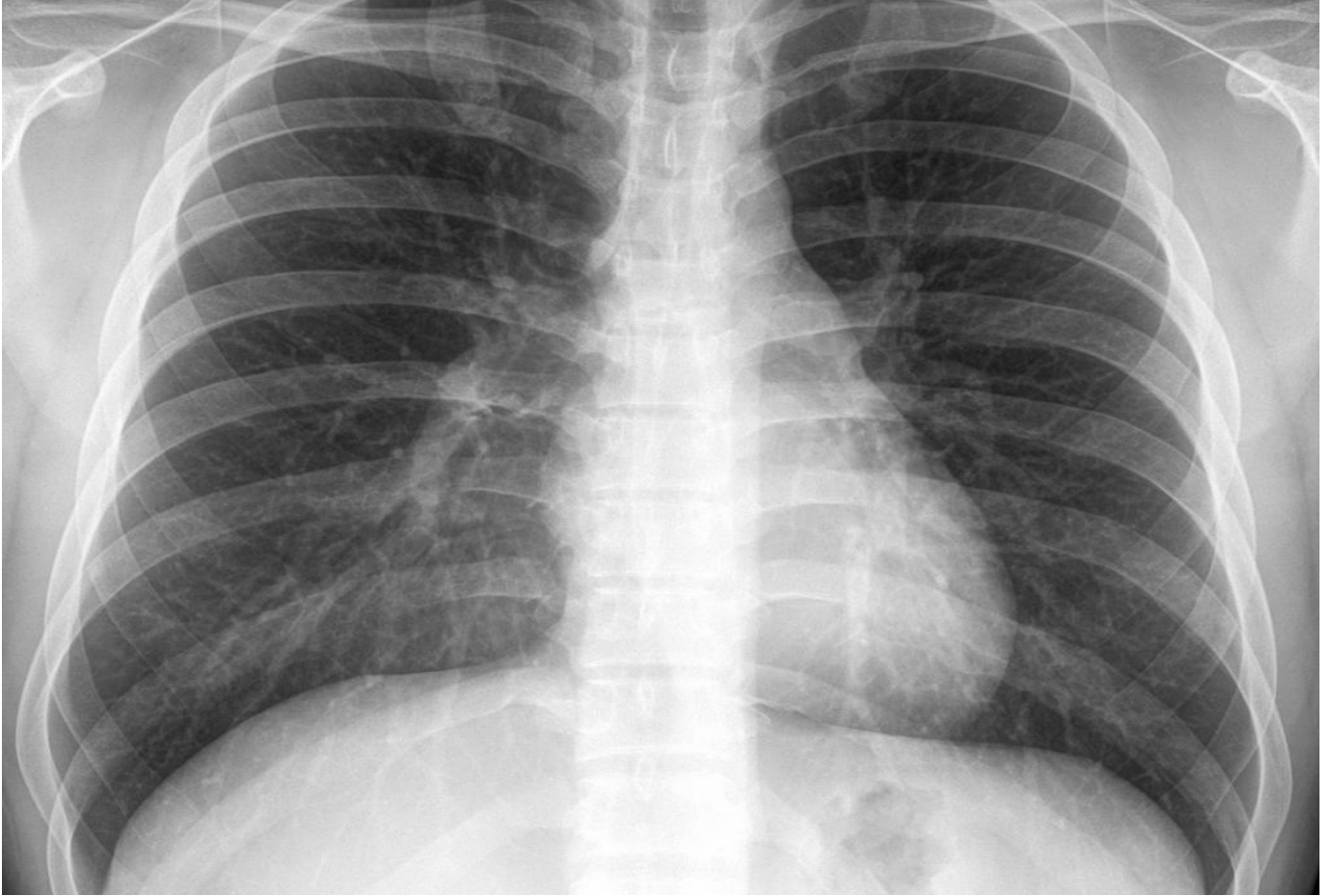


**ch + est = chest**



**All humans  
have a chest.**

**ch + est = chest**



**This is  
an X-ray  
of a chest.**



**ch + est = chest**



**A chest is also  
a piece  
of furniture.**