

s + et = set



**This is tea set.
a**

s + et = set



**This a dinner set.
is**

s + et = set



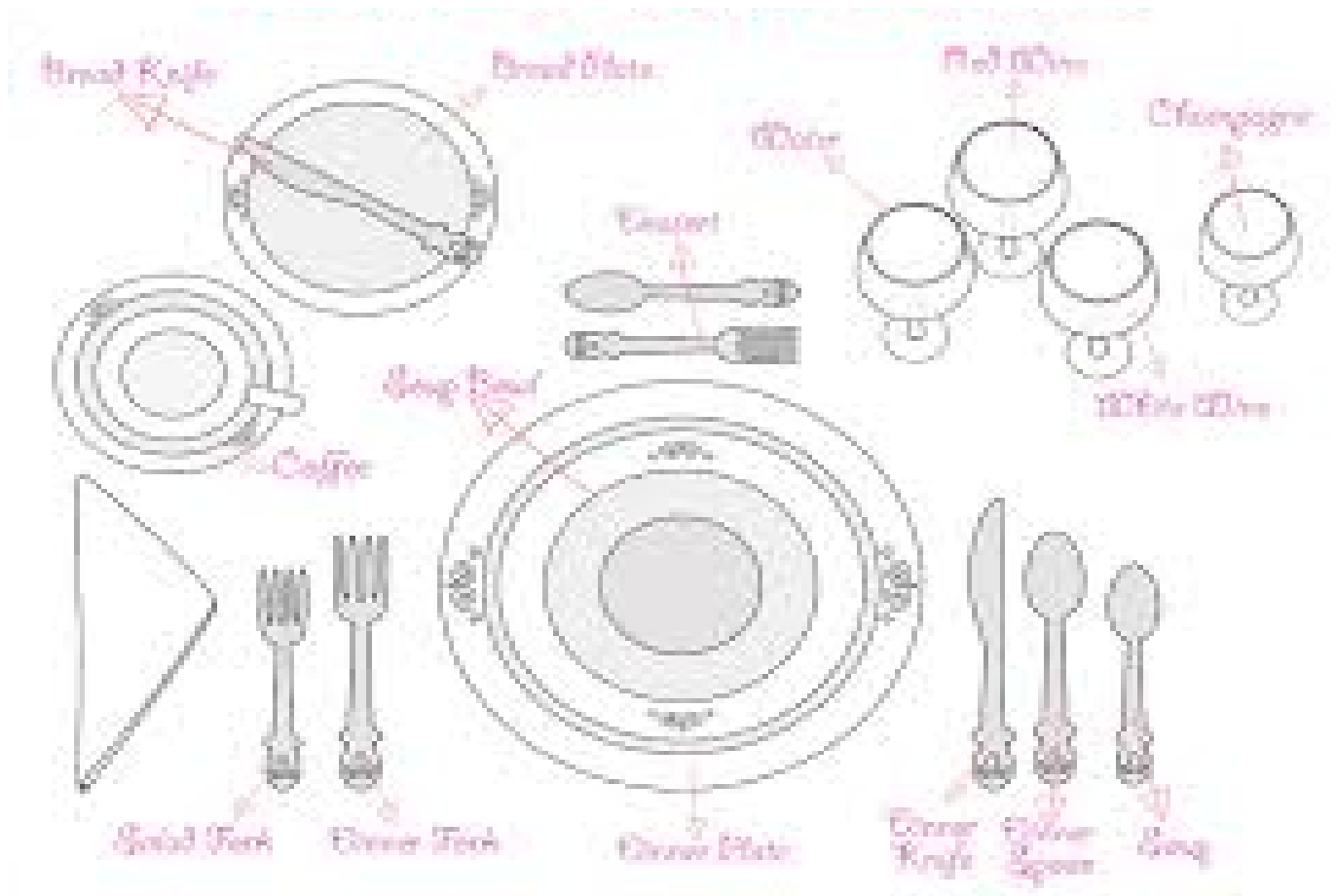
**a cookware set?
this is**

s + et = set



**a cookware set.
is this**

s + et = set



**Do you know
how set a table?
to**

s + et = set



**this a is weight
set.**

s + et = set



**This is of set a
weights.**

s + et = set



**i a bought
living room set.**

s + et = set



**nice This is a
bedroom sET.**

s + et = set



**You know this
a chess suit.
is**

s + et = set



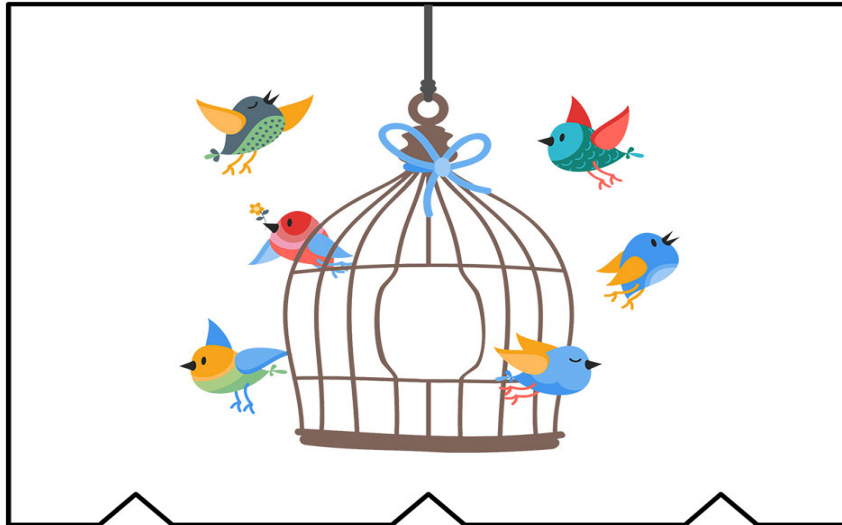
**Please it set
down.**

s + et = set



**this IS a movie
Set.**

s + et = set



set

set

set

**I always
set the
alarm for
6 o'clock.**

**He set
his watch
forward
one hour.**

**The girl has
set the
birds free.**

**sET an is
irregular verb**