

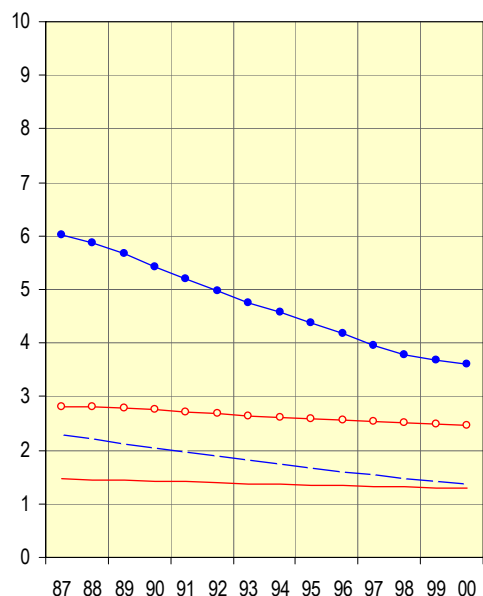
### Antal skadade per 1000 barn 0-20 år i länet fördelat på skadetyper, kön och åldersgrupp, aktuell nivå 2000 samt procentuell förändring 1999-2000

Skadetyper	Pojkar					
	0-12 år			13-20 år		
	Nivå 2000	Förändring (%) 99-00	Säkerställd förändring	Nivå 2000	Förändring (%) 99-00	Säkerställd förändring
Vägtransportolycka	1,4	-3,9	*	3,6	-2,0	
Fallolycka	8,4	-3,5		6,0	0,4	
Annat olycksfall; drunkning, förgiftn, brand, övrigt	4,2	0,4		4,6	-1,0	
Avsiktligt tillfogad skada	0,1	-3,0		2,2	6,5	

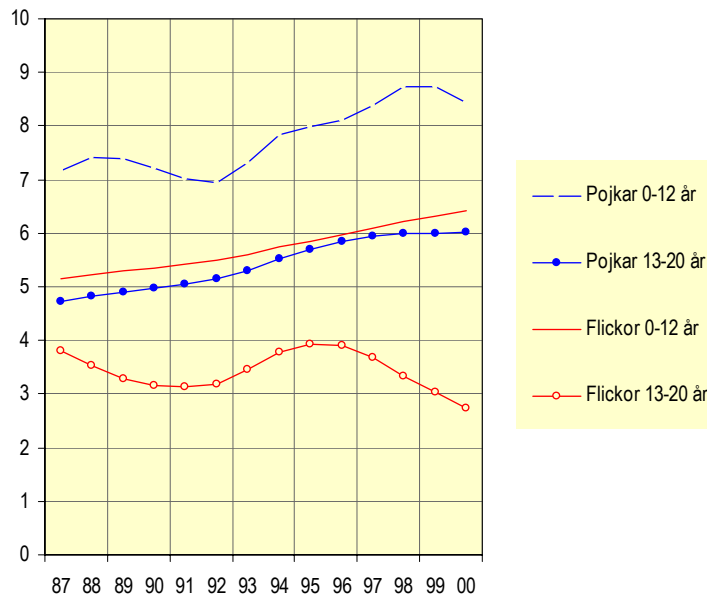
Skadetyper	Flickor					
	0-12 år			13-20 år		
	Nivå 2000	Förändring (%) 99-00	Säkerställd förändring	Nivå 2000	Förändring (%) 99-00	Säkerställd förändring
Vägtransportolycka	1,3	-1,0		2,5	-0,8	
Fallolycka	6,4	1,5		2,7	-10,1	
Annat olycksfall; drunkning, förgiftn, brand, övrigt	2,5	-4,6		2,4	-3,1	
Avsiktligt tillfogad skada	0,2	5,2		3,3	3,8	*

\* Säkerställd förändring mellan år 1999 och 2000 med 95% signifikans

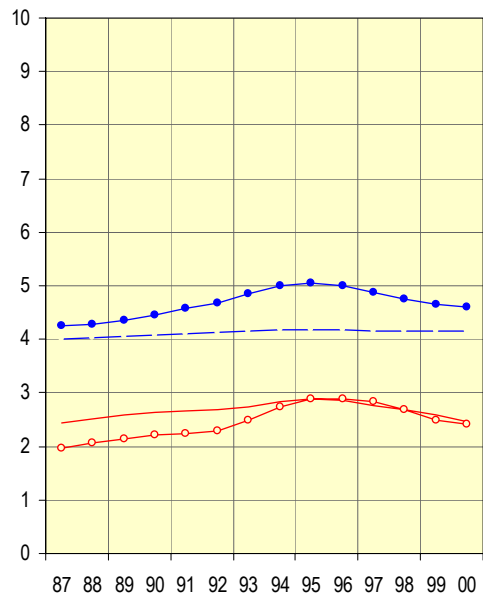
Antal skadade per 1000 barn 0-20 år till följd av vägtransportolycka 1987-2000



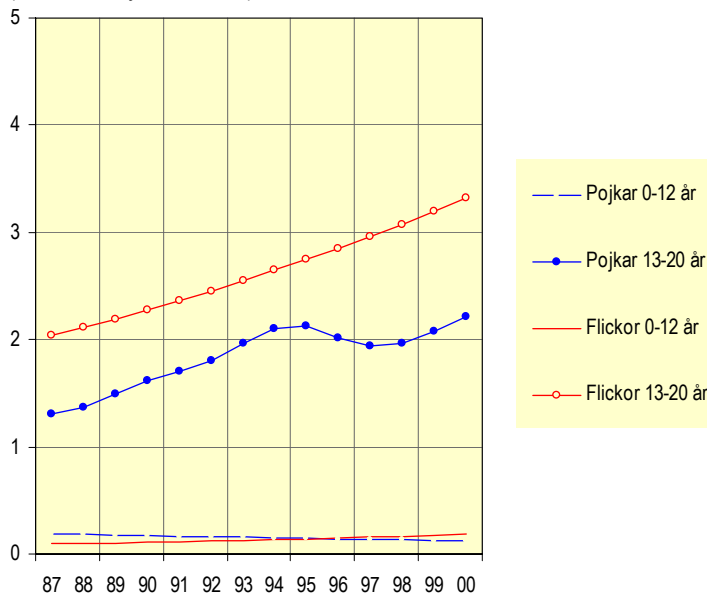
Antal skadade per 1000 barn 0-20 år till följd av fallolycka 1987-2000



Antal skadade per 1000 barn 0-20 år till följd av annat olycksfall 1987-2000



Antal skadade per 1000 barn 0-20 år till följd av avsiktligt tillfogad skada 1987-2000 (observera bytet av skala)

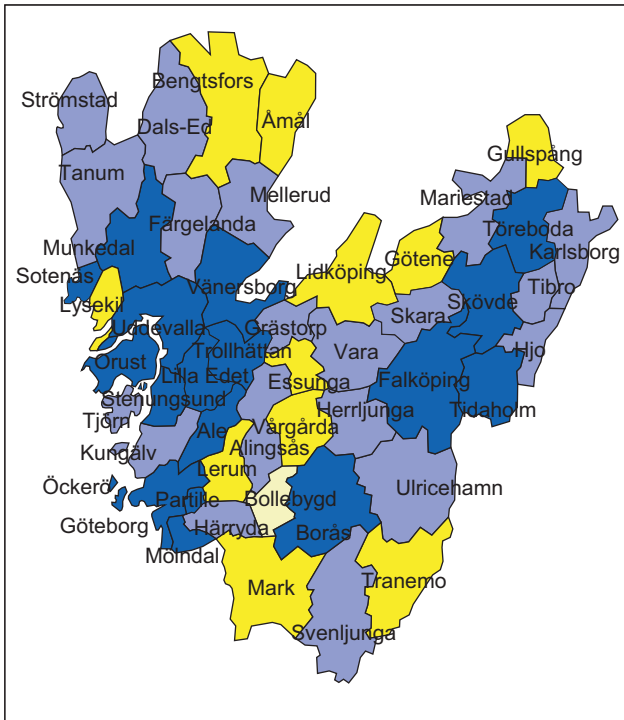


### Antal skadade per 1000 barn 0-20 år (samtliga skadetyper) fördelat på kön, kommun, län och riket, aktuell nivå 2000 samt procentuell förändring 1999-2000

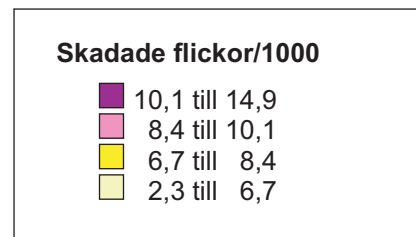
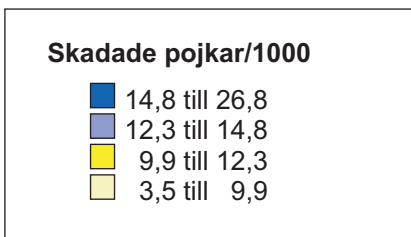
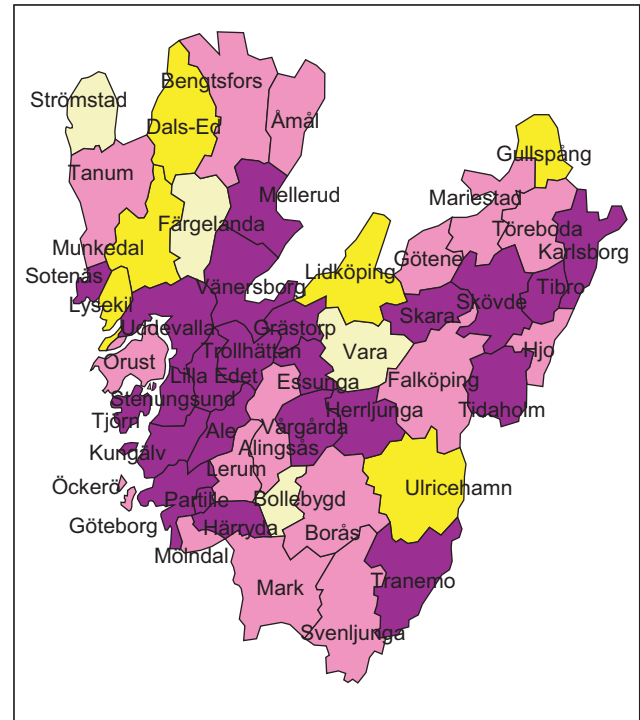
Kommun/ Län/ Riket	Pojkar			Flickor			Översikt 1987-2000		Antal barn 0-20 år i befolkningen, 2000
	Aktuell nivå, 2000	Aktuell föränd- ring (%), 99-00	Säker- ställd föränd- ring	Aktuell nivå, 2000	Aktuell föränd- ring (%), 99-00	Säker- ställd föränd- ring	Totalt antal skadade barn	Antal skadade per år	
Ale	14,9	12,4		10,2	-7,4		1 275	91,1	7 306
Alingsås	12,6	0,0		9,8	0,0		1 502	107,3	9 592
Bengtsfors	10,1	-4,5		9,0	-4,1		417	29,8	2 590
Bollebygd	9,8	-16,4		6,4	-17,1		125	17,9	2 304
Borås	15,6	0,2		8,5	-13,5		3 699	264,2	24 193
Dals-Ed	12,9	0,0		7,7	0,0		206	14,7	1 310
Essunga	12,2	-5,7		10,1	0,0		269	19,2	1 566
Falköping	15,5	8,0		9,6	3,3		1 472	105,1	8 064
Färgelanda	13,3	0,0		5,7	-17,8		334	23,9	1 924
Grästorp	13,8	4,2		10,6	0,0		329	23,5	1 594
Gullspång	11,9	3,3		8,3	-4,1		269	19,2	1 525
Göteborg	16,0	-3,1		11,0	0,0		19 300	1 378,6	106 471
Götene	12,1	7,1		9,0	7,6		683	48,8	3 579
Herrljunga	12,5	0,0		11,6	17,0		374	26,7	2 572
Hjo	13,7	0,0		10,0	0,0		427	30,5	2 299
Härryda	14,2	-7,3		14,4	-1,4		1 487	106,2	9 240
Karlsborg	12,5	-4,5		13,5	0,0		315	22,5	1 708
Kungälv	13,9	0,0		10,5	0,0		1 698	121,3	10 362
Lerum	12,1	-1,0		9,1	0,4		1 749	124,9	10 881
Lidköping	11,1	-2,8		7,7	9,7		1 569	112,1	9 592
Lilla Edet	19,5	6,0		13,1	0,4		799	57,1	3 674
Lysekil	12,0	0,0		7,6	3,6		567	40,5	3 706
Mariestad	13,1	0,0		8,6	3,3		991	70,8	5 997
Mark	11,9	-3,0		8,7	-1,1		1 463	104,5	8 978
Mellerud	13,7	0,0		14,1	16,1		468	33,4	2 475
Munkedal	15,4	10,0		7,0	-18,3		554	39,6	2 775
Mölndal	15,7	-7,1		9,7	-16,9		2 433	173,8	15 184
Orust	15,1	0,0		9,9	0,0		731	52,2	4 023
Partille	15,1	-3,1		11,5	-2,3		1 794	128,1	9 919
Skara	12,9	-5,1		10,6	0,0		883	63,1	4 898
Skövde	15,2	0,0		10,1	10,5		2 199	157,1	12 721
Sotenäs	18,6	0,0		11,8	6,5		520	37,1	2 244
Stenungsund	15,0	0,0		10,4	3,4		974	69,6	5 899
Strömstad	14,1	5,1		6,5	0,0		334	23,9	2 696
Svenljunga	13,3	0,0		8,7	-15,3		461	32,9	2 838
Tanum	13,2	-3,0		9,0	0,0		488	34,9	3 026
Tibro	13,3	-7,0		10,3	0,0		570	40,7	2 832
Tidaholm	16,1	11,1		10,2	-1,9		615	43,9	3 353
Tjörn	12,4	1,6		11,9	16,6		733	52,4	4 110
Tranemo	11,0	0,0		13,8	24,2		453	32,4	3 265
Trollhättan	16,4	0,0		12,2	3,9		2 726	194,7	13 684
Töreboda	15,0	2,5		8,5	0,0		463	33,1	2 597
Uddevalla	15,5	1,0		12,7	0,0		2 522	180,1	12 560
Ulricehamn	13,6	0,2		6,7	-12,7		709	50,6	5 842
Vara	12,8	-2,5		6,0	-17,9		817	58,4	4 099
Vårgårda	11,5	-8,7		12,3	18,0		484	34,6	3 130
Vänersborg	15,5	0,0		11,5	0,0		1 874	133,9	9 688
Åmål	12,2	0,0		8,4	0,0		472	33,7	3 136
Öckerö	20,0	5,3	*	9,3	0,8		518	37,0	3 391
Länet totalt	15,0	0,0		10,5	-2,9		66 114	4 722,4	381 412
Riket totalt	12,4	-0,8		8,5	-1,0		314 345	22 453,2	2 243 627

\* Säkerställd förändring mellan år 1999 och 2000 med 95% signifikans

**Skadade pojkar 0-20 år – aktuell nivå 2000**



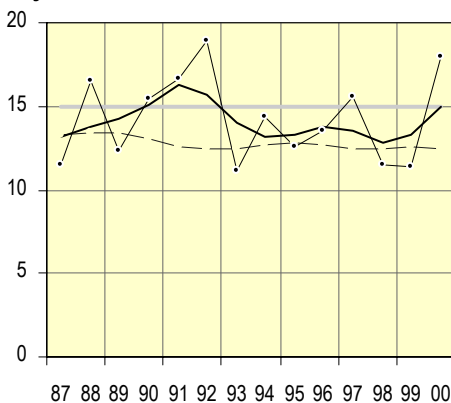
**Skadade flickor 0-20 år – aktuell nivå 2000**



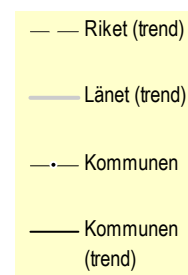
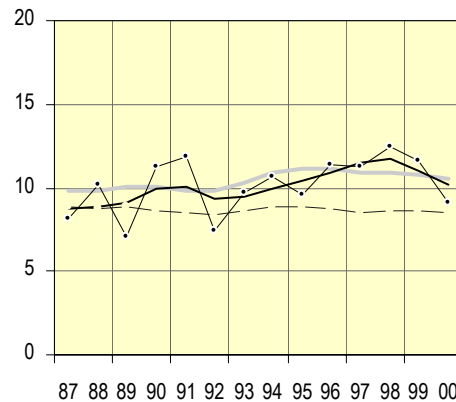
**Antal skadade per 1000 barn 0-20 år (samtliga skadetyper) 1987-2000 fördelat på kön, kommun samt trend för kommun, län och riket**

**Ale kommun**

**Pojkar**

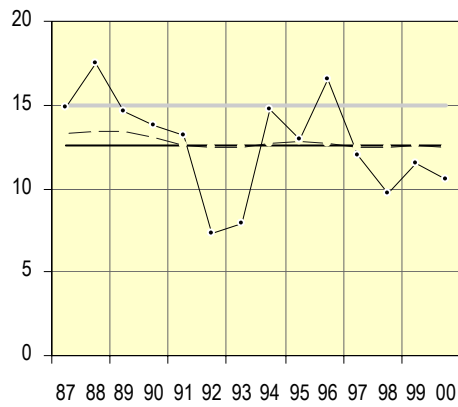


**Flickor**

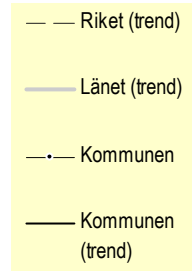
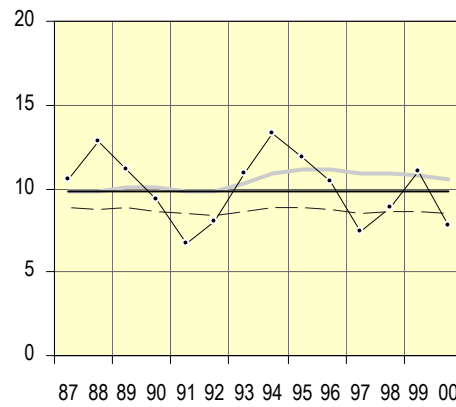


**Alingsås kommun**

**Pojkar**

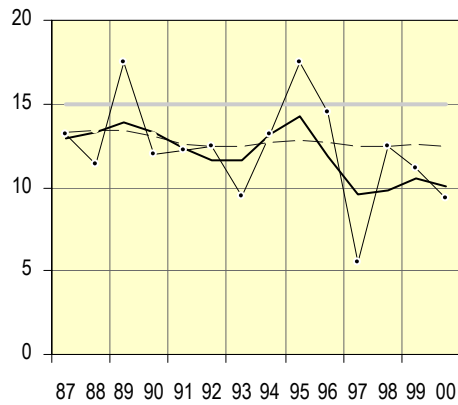


**Flickor**

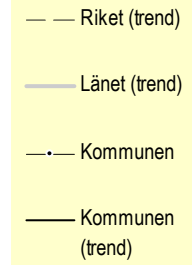
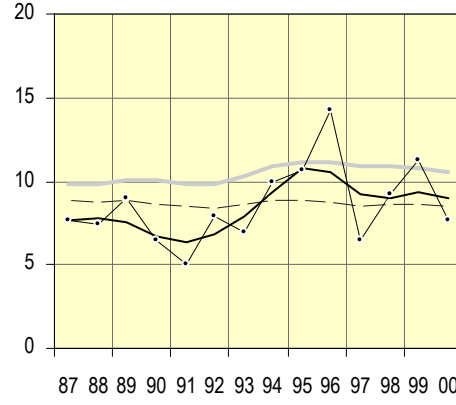


**Bengtsfors kommun**

**Pojkar**

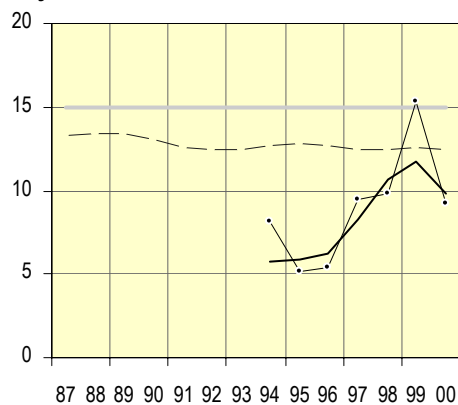


**Flickor**

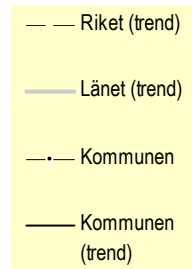
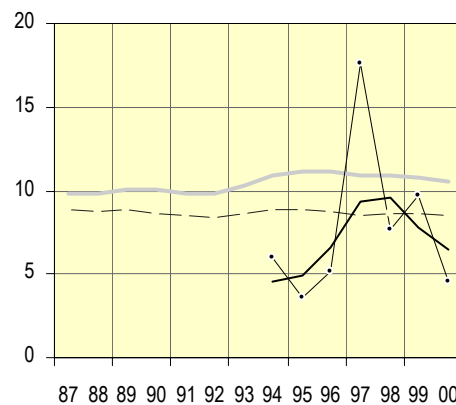


**Bollebygds kommun**

**Pojkar**

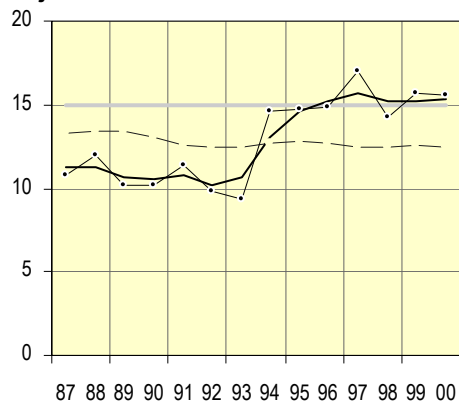


**Flickor**

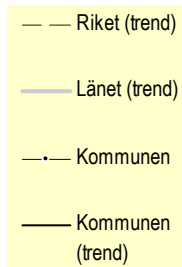
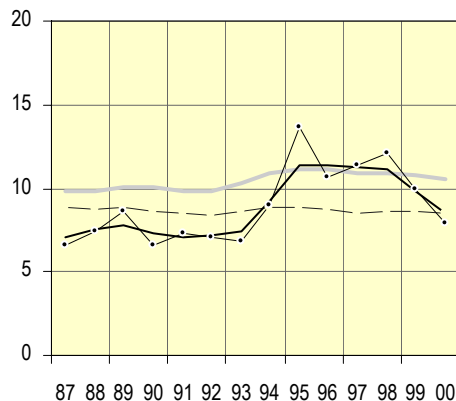


**Borås kommun**

**Pojkar**

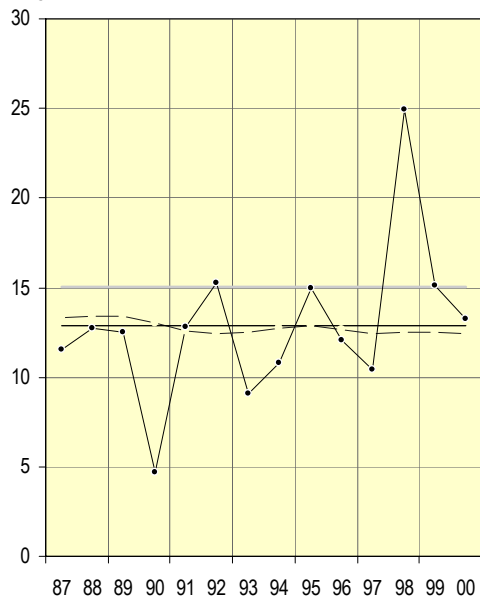


**Flickor**

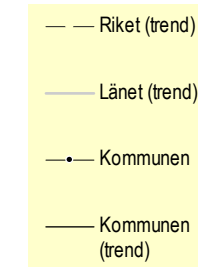
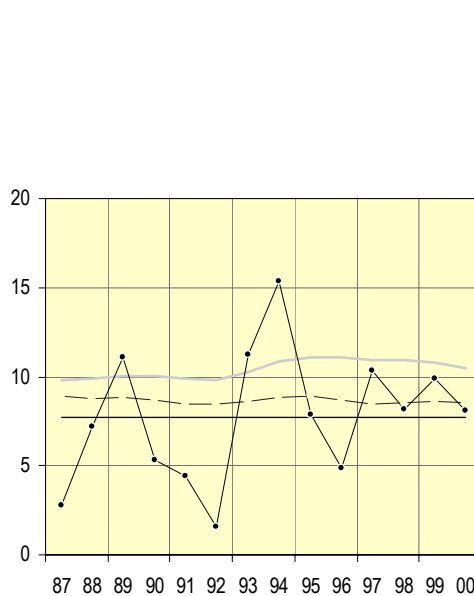


**Dals-Eds kommun**

**Pojkar**

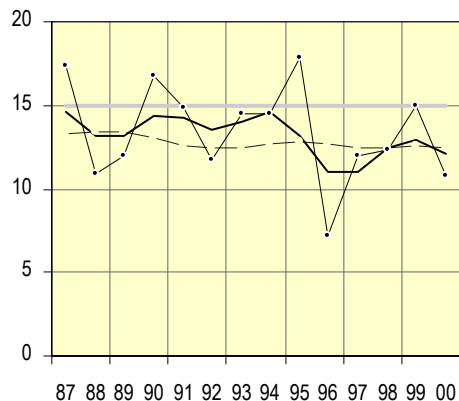


**Flickor**

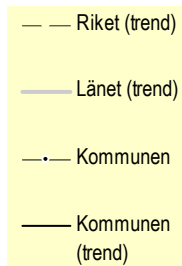
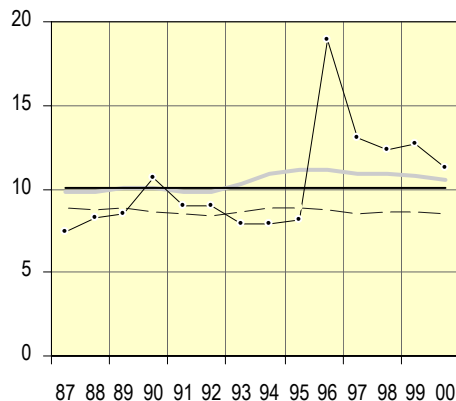


**Essunga kommun**

**Pojkar**

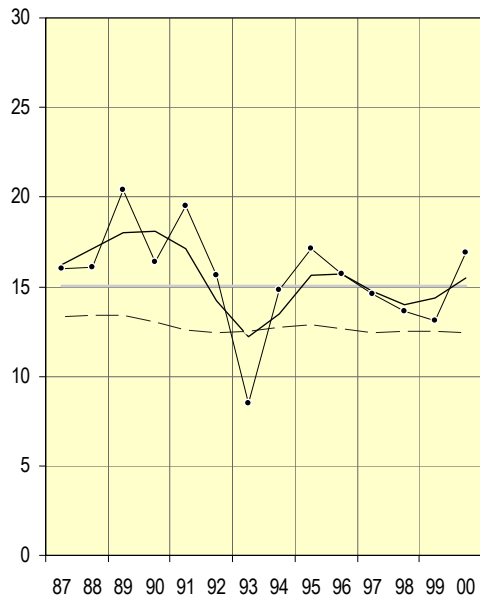


**Flickor**

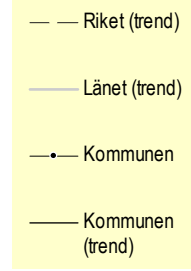
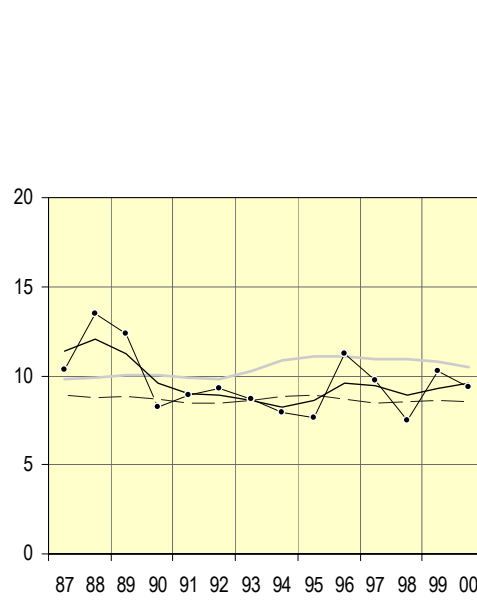


**Falköpings kommun**

**Pojkar**

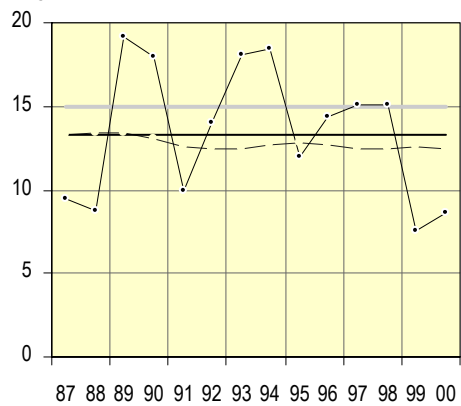


**Flickor**

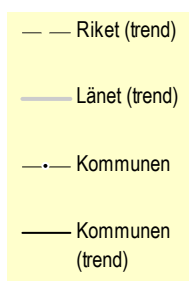
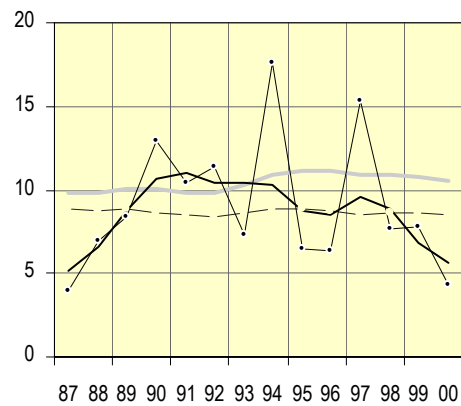


**Färgelanda kommun**

**Pojkar**

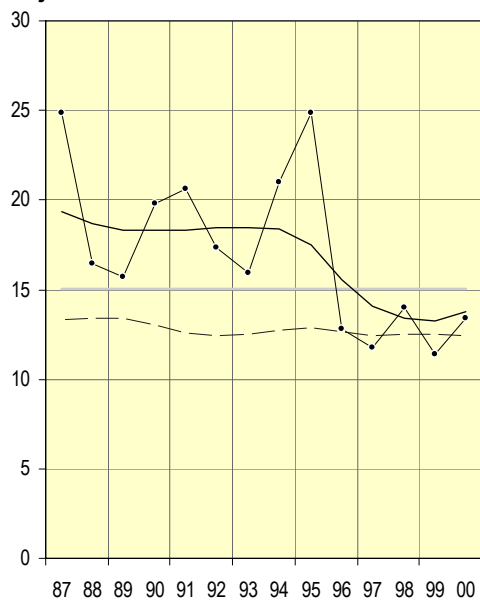


**Flickor**

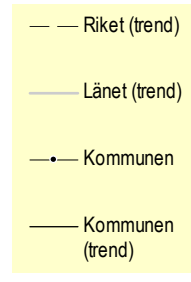
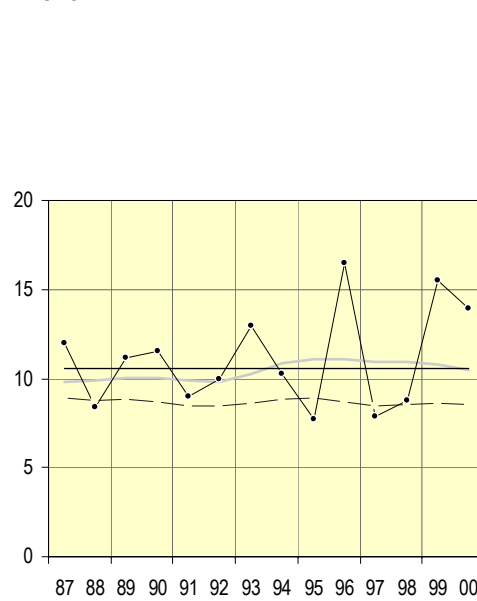


**Grästorps kommun**

**Pojkar**

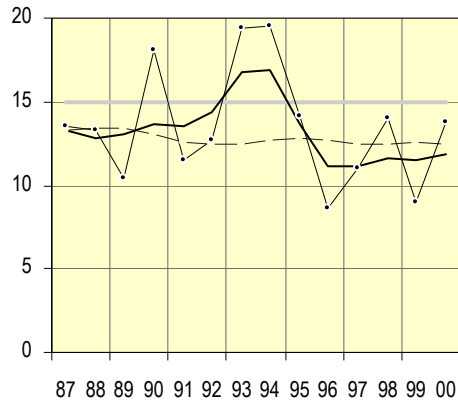


**Flickor**

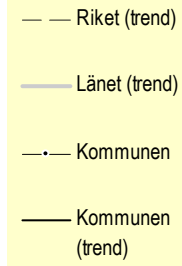
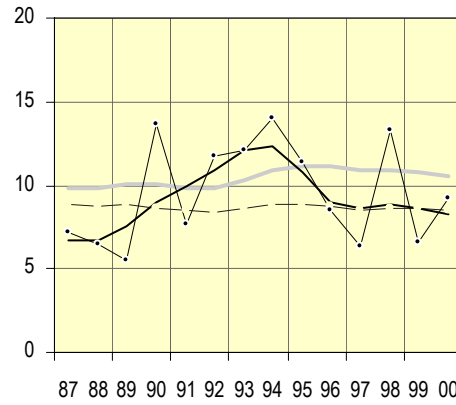


**Gullspångs kommun**

**Pojkar**

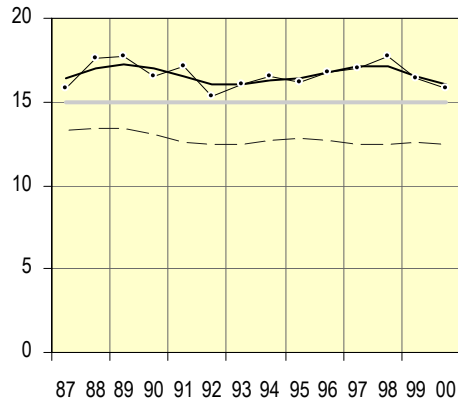


**Flickor**

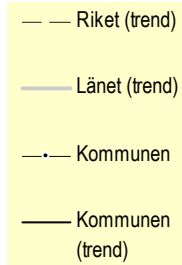
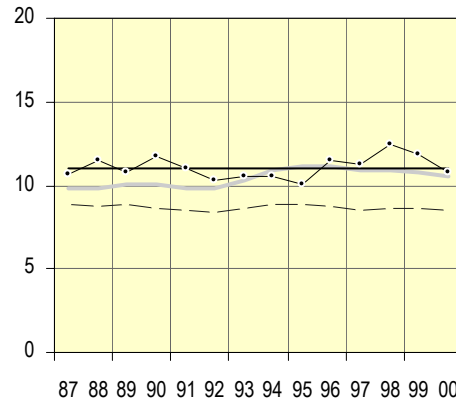


**Göteborgs kommun**

**Pojkar**

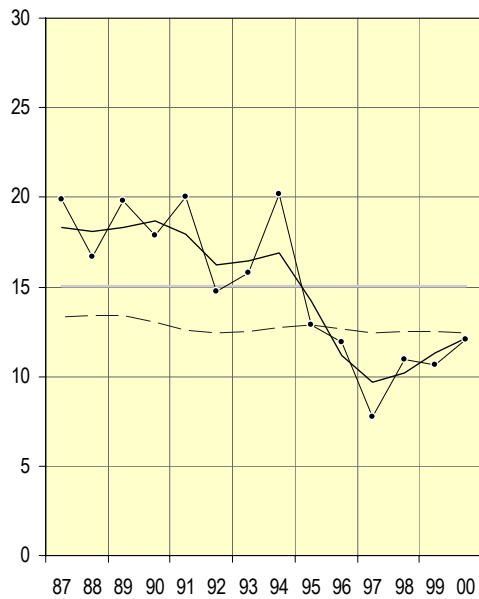


**Flickor**

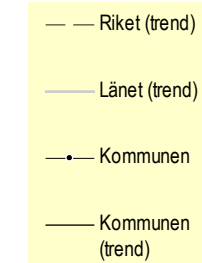
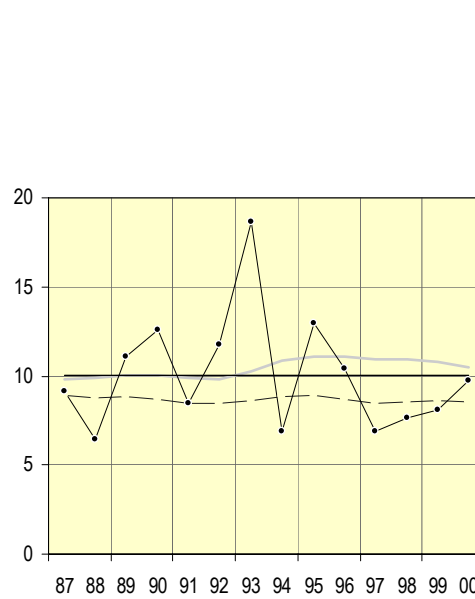


**Götene kommun**

**Pojkar**

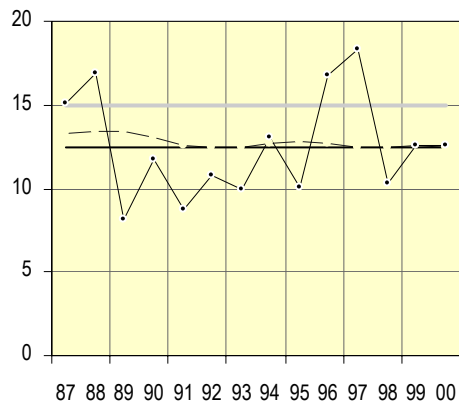


**Flickor**

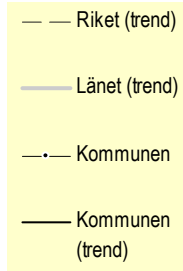
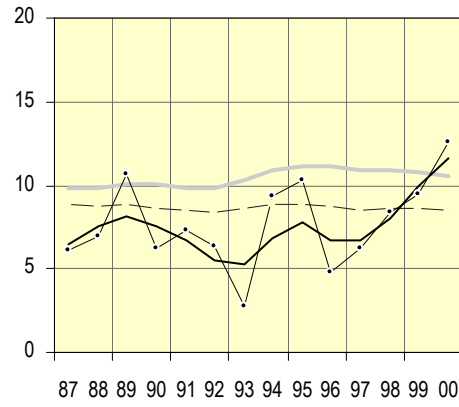


**Herrljunga kommun**

**Pojkar**

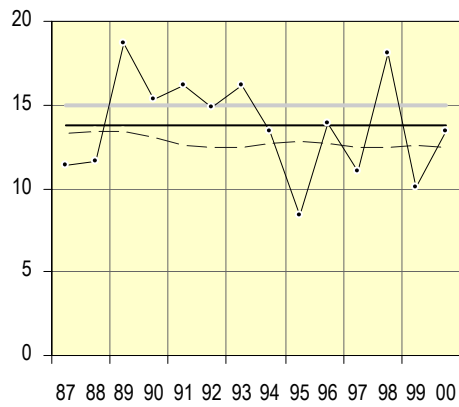


**Flickor**

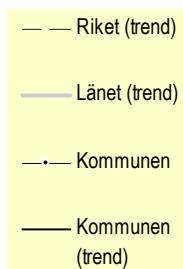
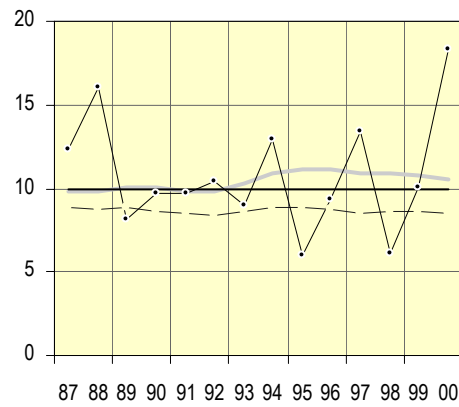


**Hjo kommun**

**Pojkar**

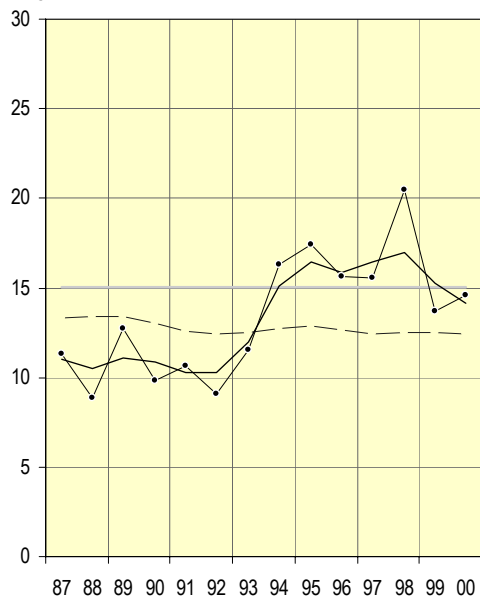


**Flickor**

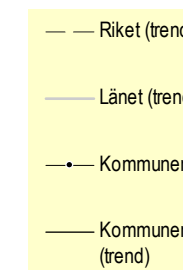
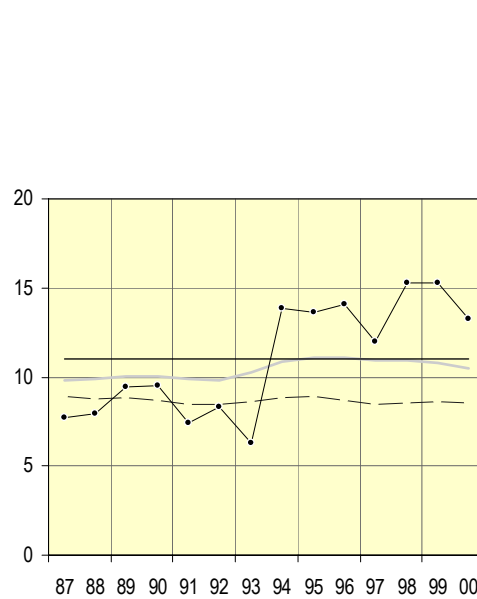


**Härryda kommun**

**Pojkar**



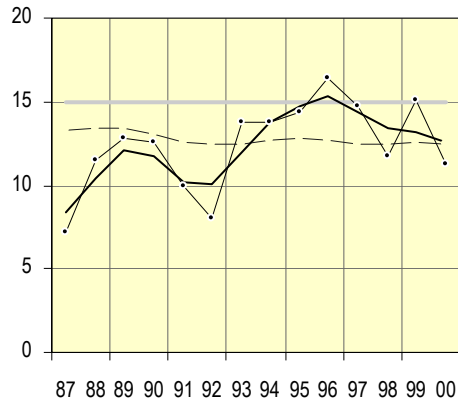
**Flickor**



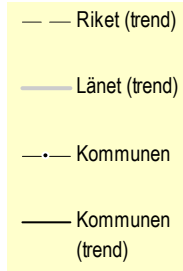
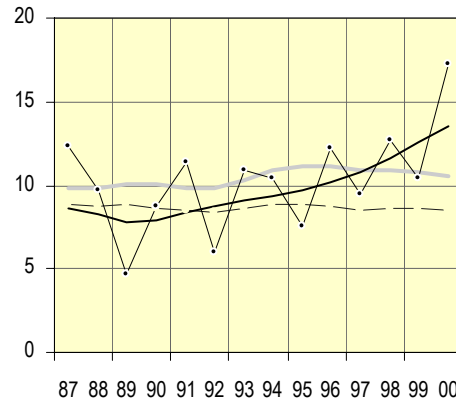


**Karlsborgs kommun**

**Pojkar**

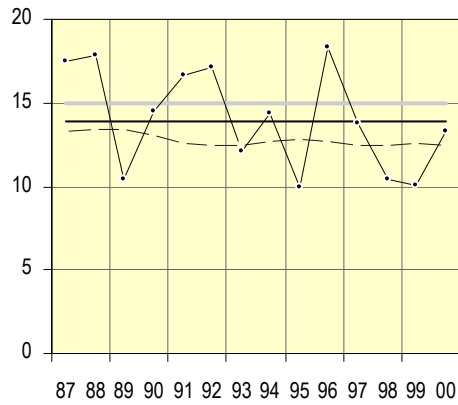


**Flickor**

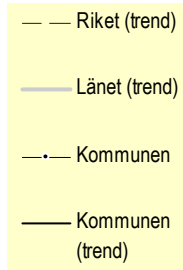
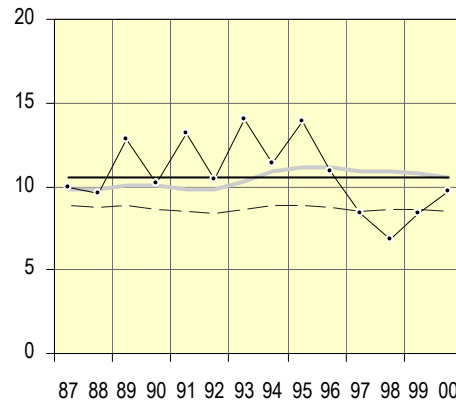


**Kungälv kommun**

**Pojkar**

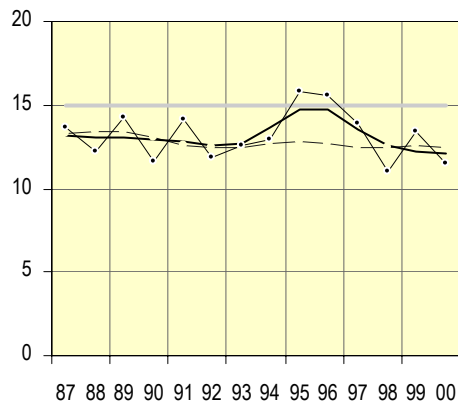


**Flickor**

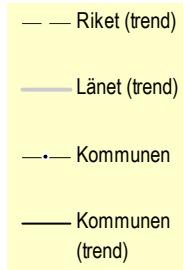
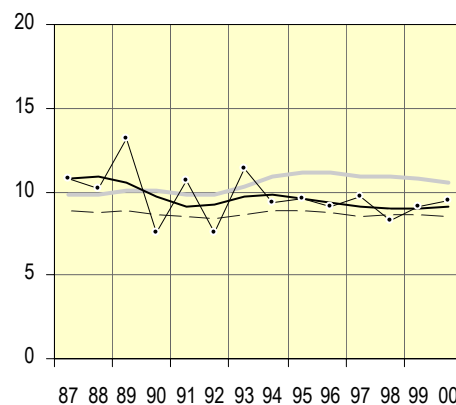


**Lerums kommun**

**Pojkar**

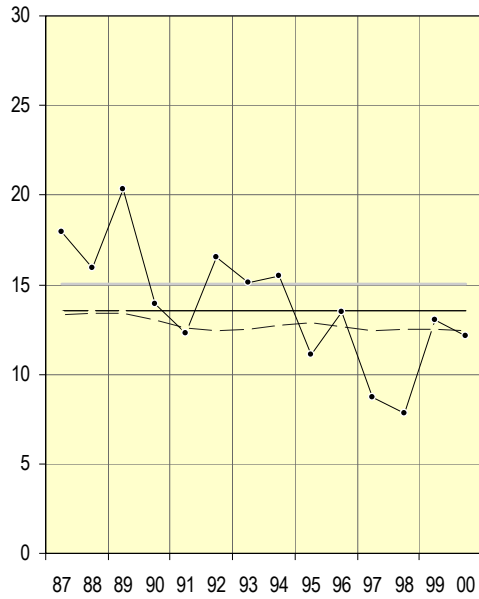


**Flickor**

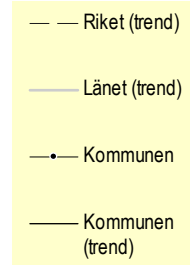
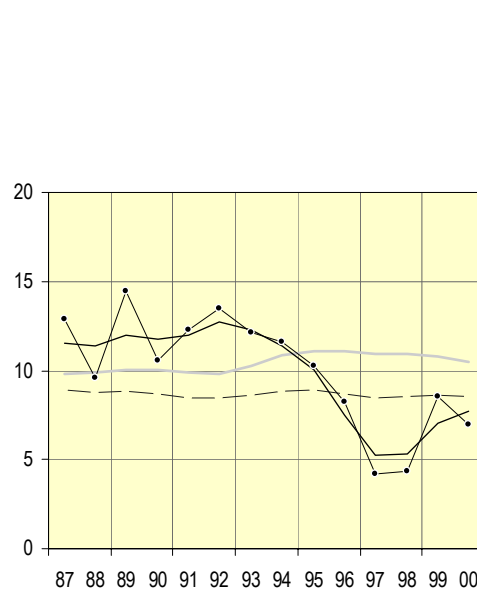


**Lidköpings kommun**

**Pojkar**

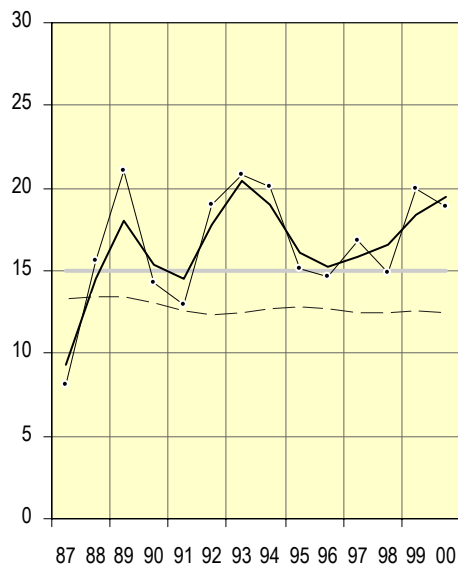


**Flickor**

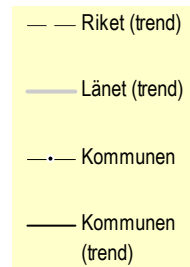
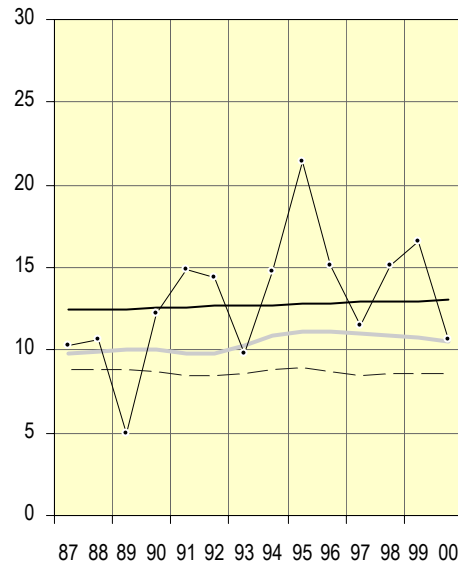


**Lilla Edets kommun**

**Pojkar**

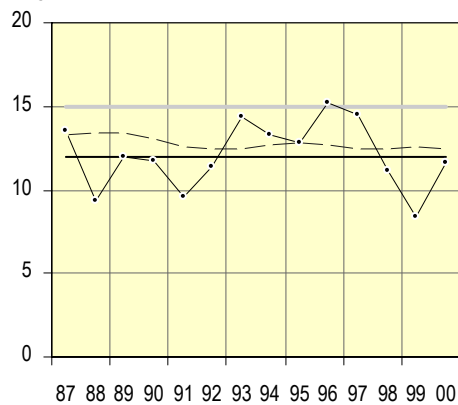


**Flickor**

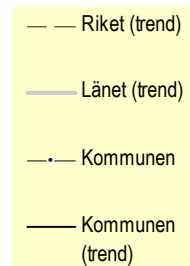
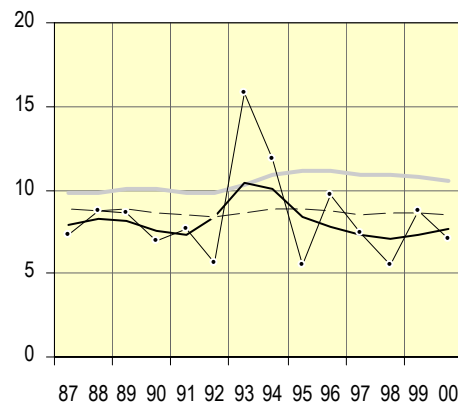


**Lysekils kommun**

**Pojkar**

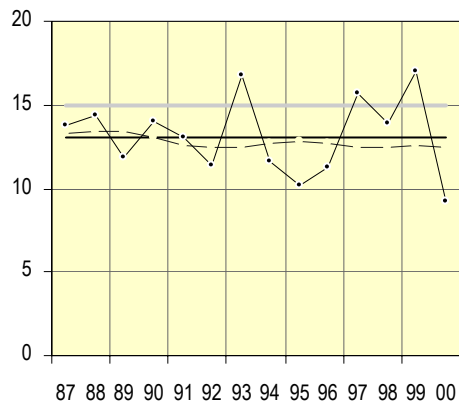


**Flickor**

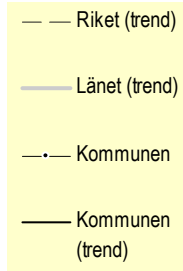
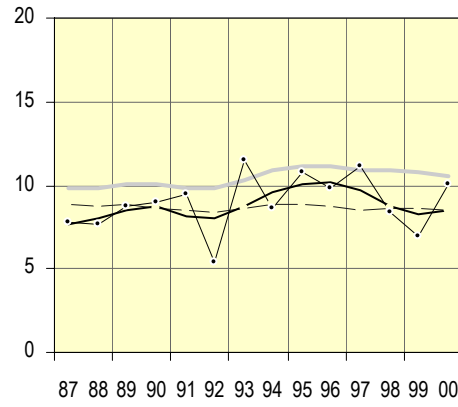


**Mariestads kommun**

**Pojkar**

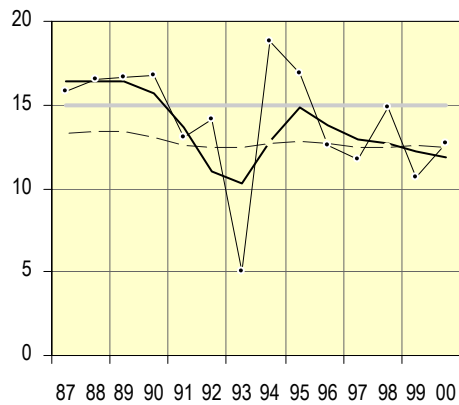


**Flickor**

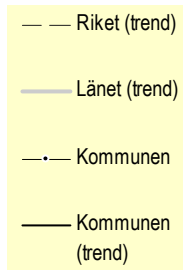
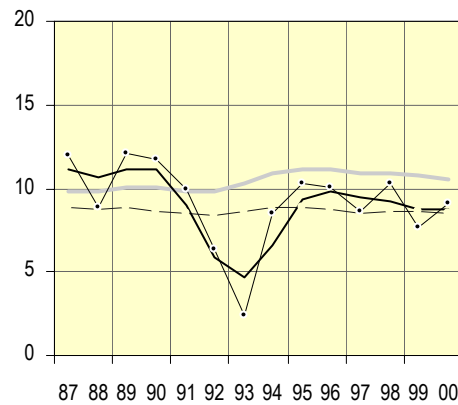


**Marks kommun**

**Pojkar**

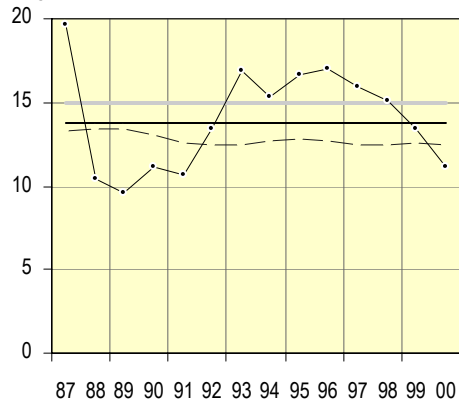


**Flickor**

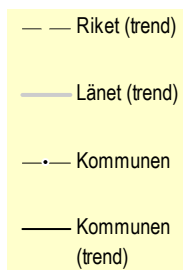
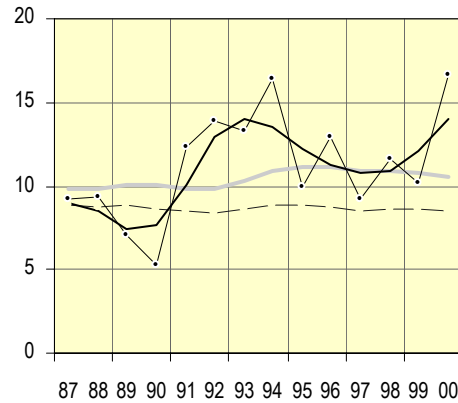


**Melleruds kommun**

**Pojkar**

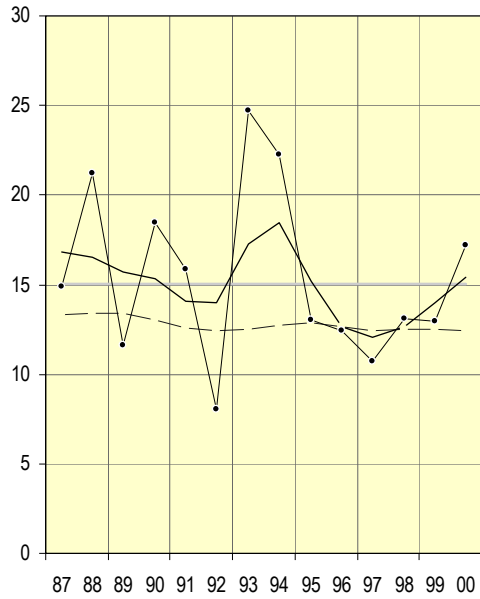


**Flickor**

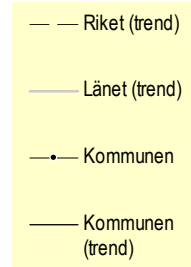
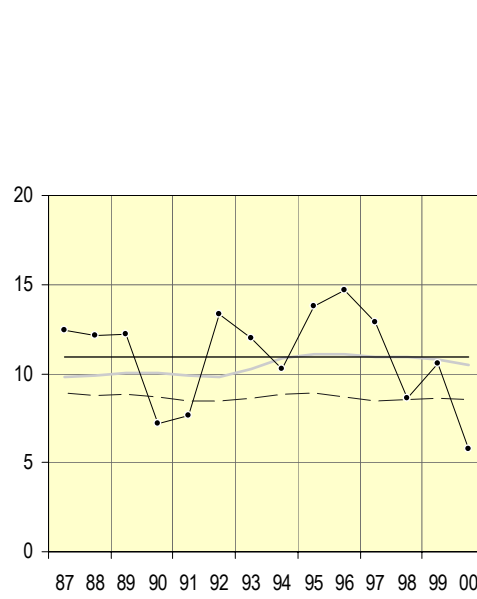


**Munkedals kommun**

**Pojkar**

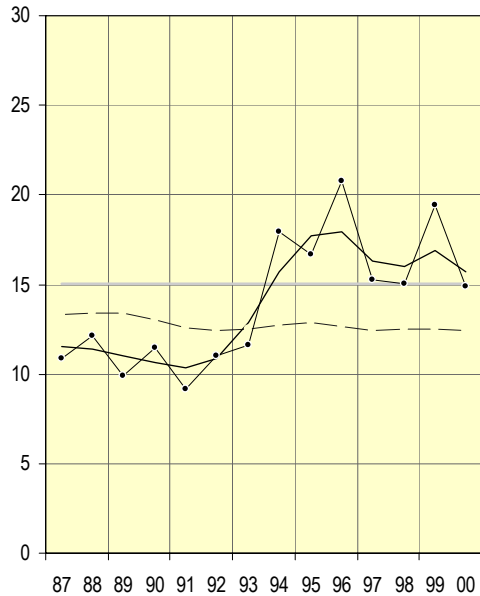


**Flickor**

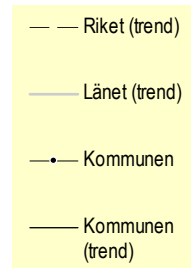
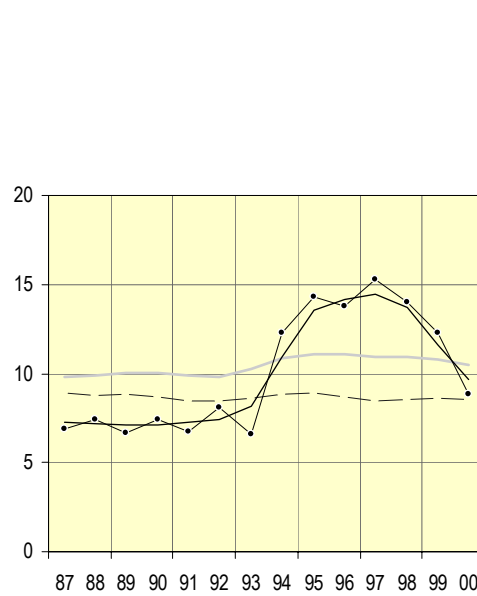


**Möndals kommun**

**Pojkar**

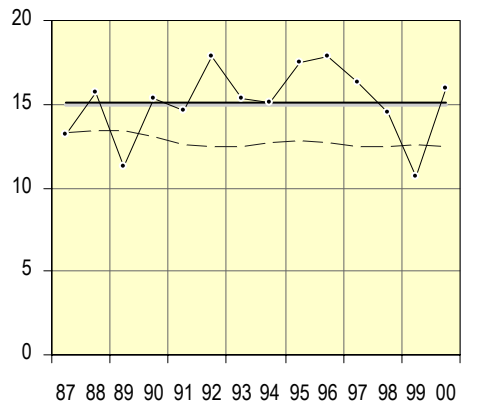


**Flickor**

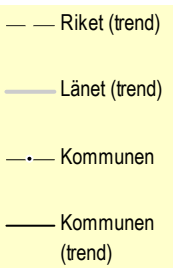
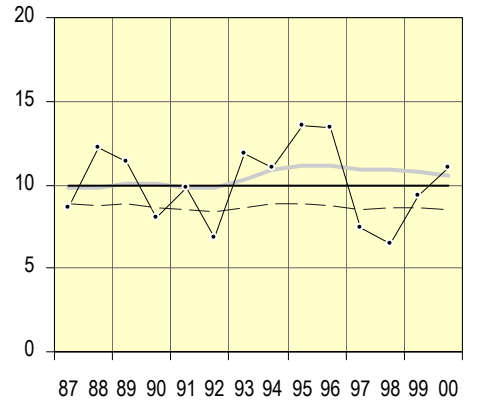


**Orust kommun**

**Pojkar**

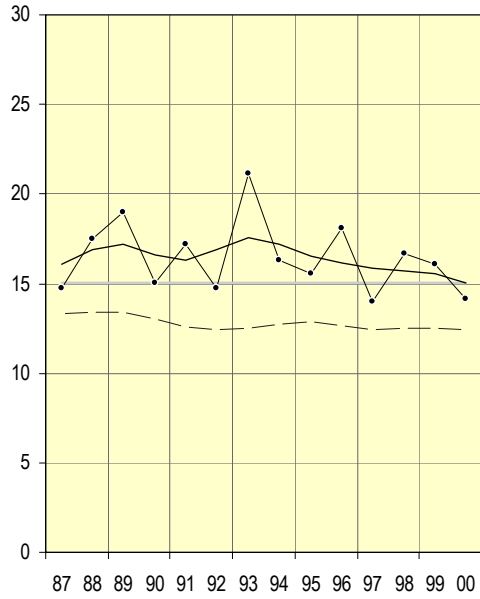


**Flickor**

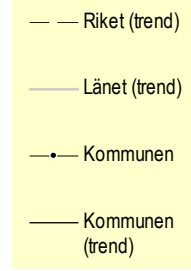
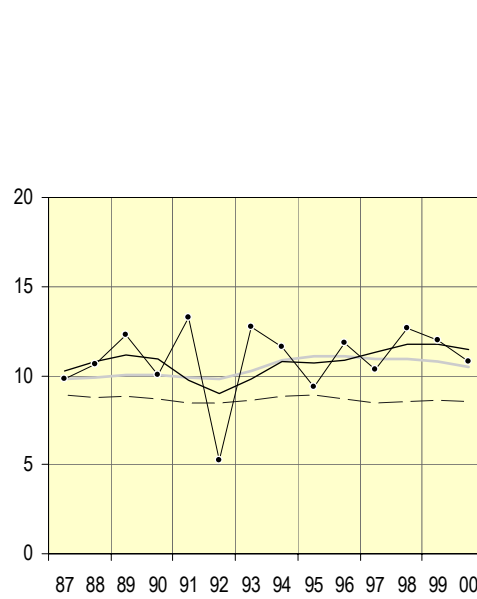


**Partille kommun**

**Pojkar**

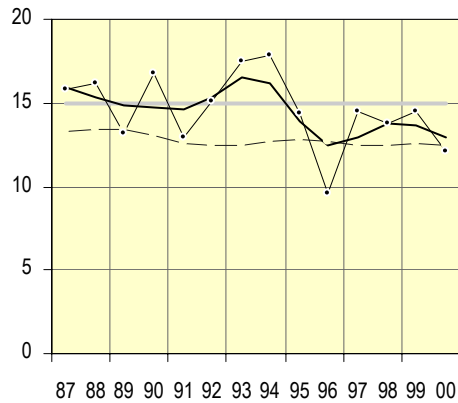


**Flickor**

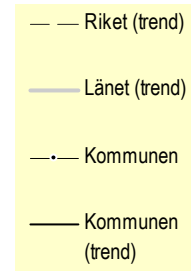
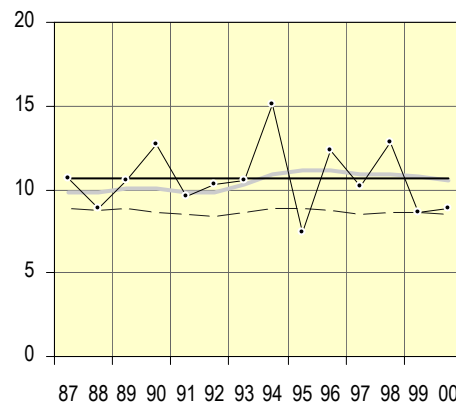


**Skara kommun**

**Pojkar**

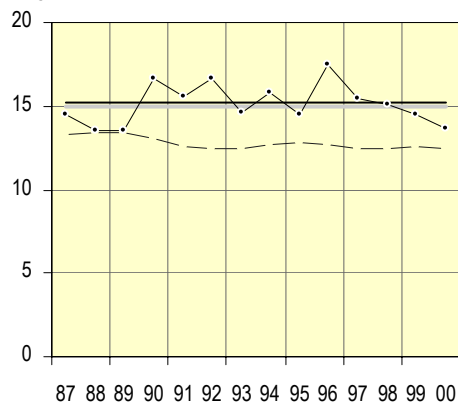


**Flickor**

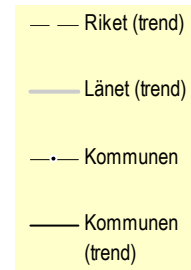
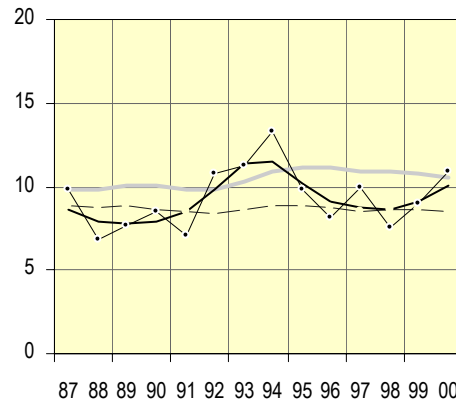


**Skövde kommun**

**Pojkar**

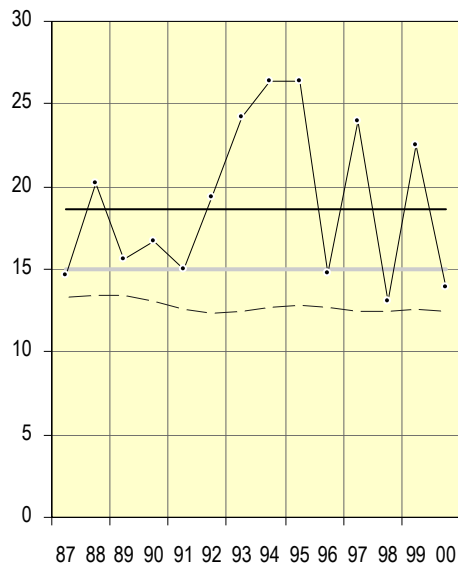


**Flickor**

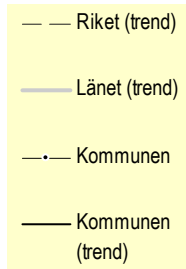
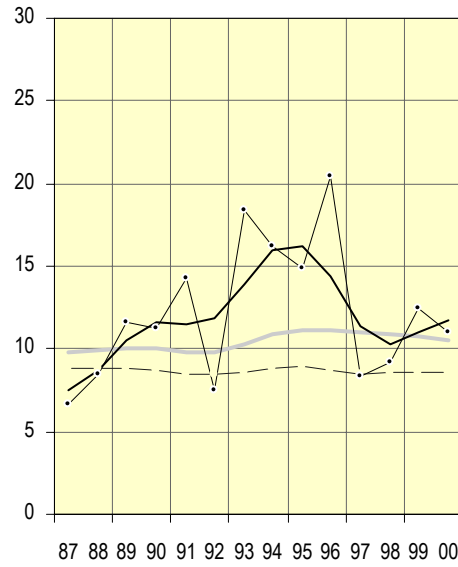


**Sotenäs kommun**

**Pojkar**

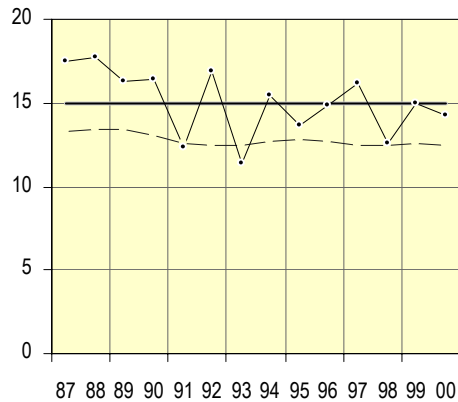


**Flickor**

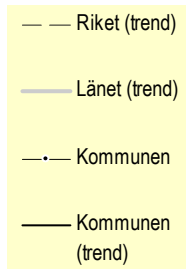
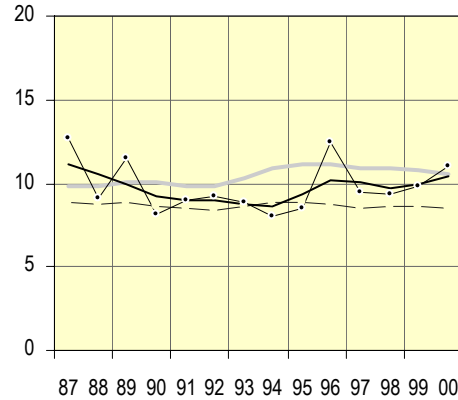


**Stenungsunds kommun**

**Pojkar**

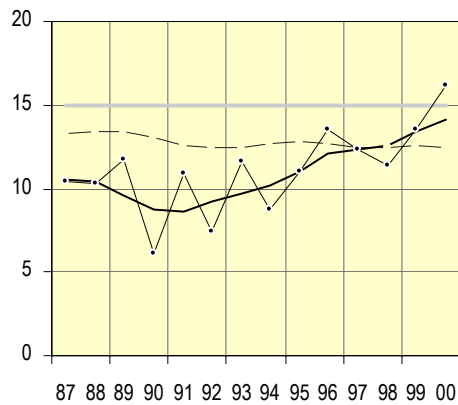


**Flickor**

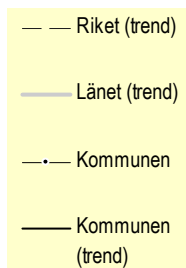
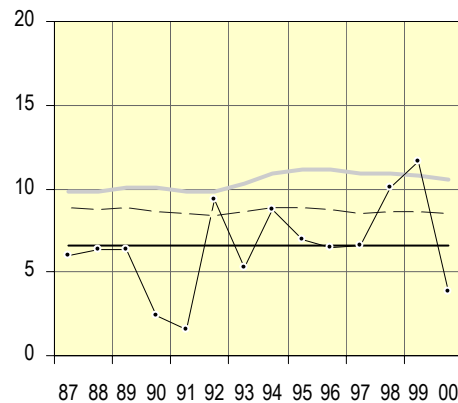


**Strömstads kommun**

**Pojkar**

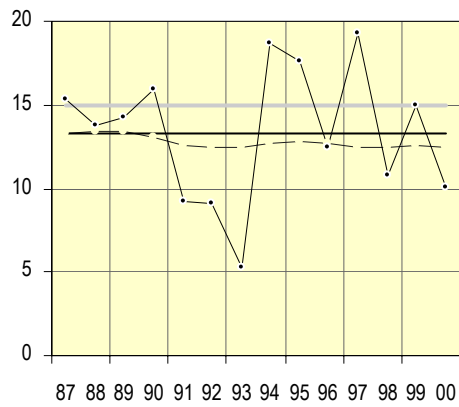


**Flickor**

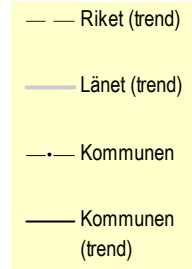
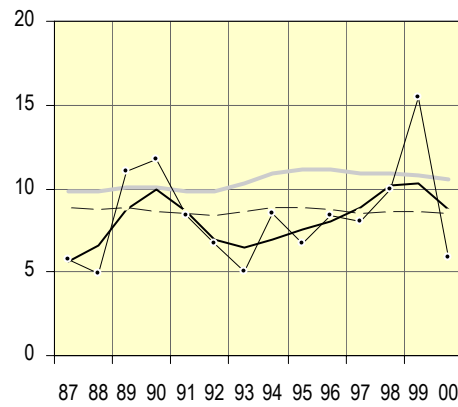


**Svenljunga kommun**

**Pojkar**

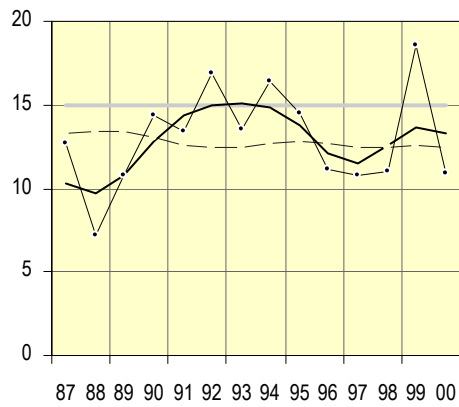


**Flickor**

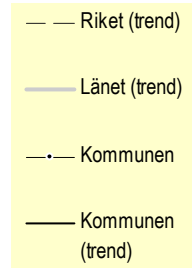
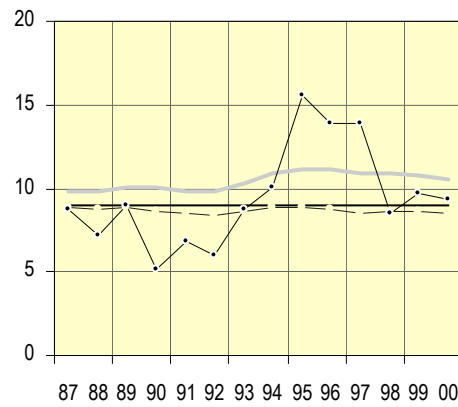


**Tanums kommun**

**Pojkar**

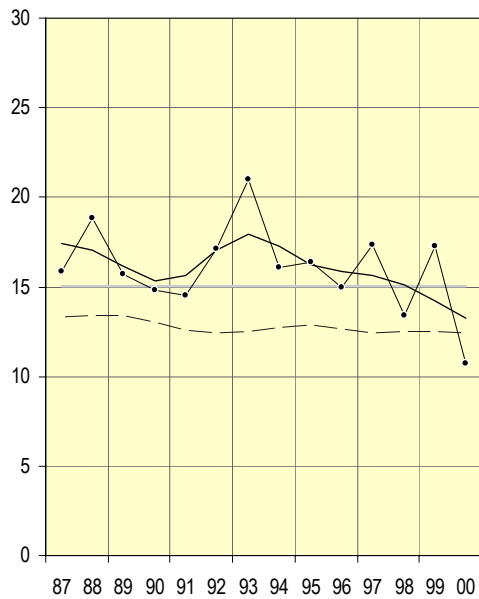


**Flickor**

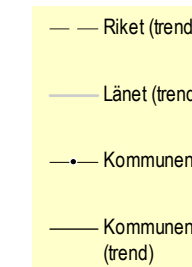
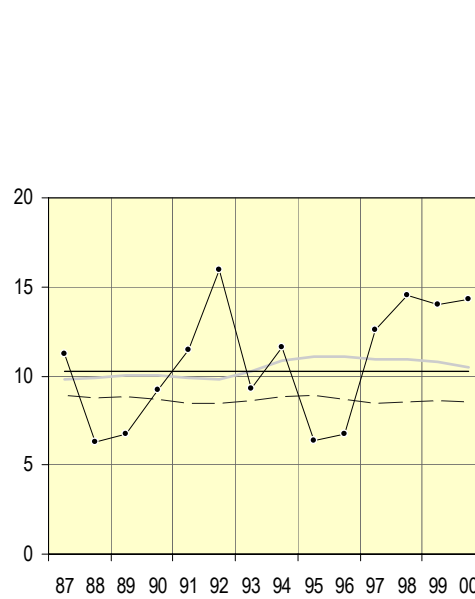


**Tibro kommun**

**Pojkar**

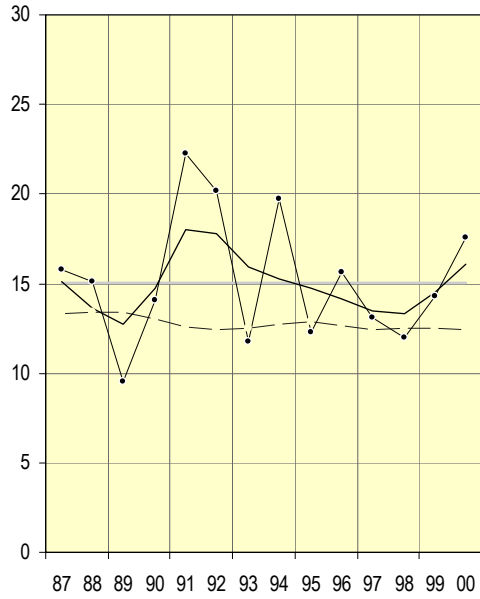


**Flickor**

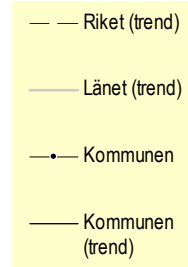
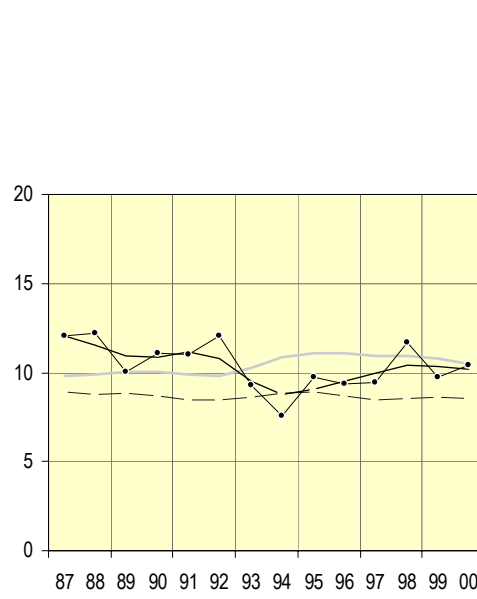


**Tidaholms kommun**

**Pojkar**

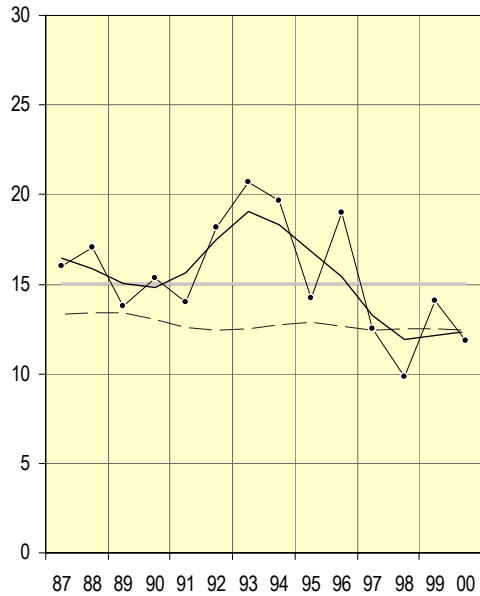


**Flickor**

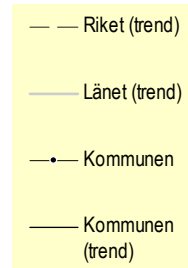
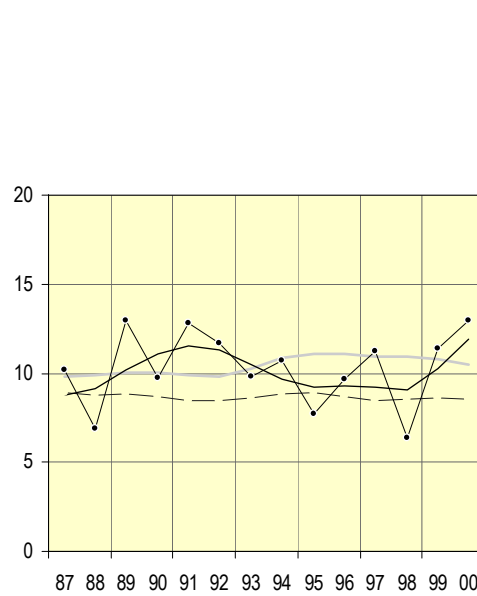


**Tjörns kommun**

**Pojkar**

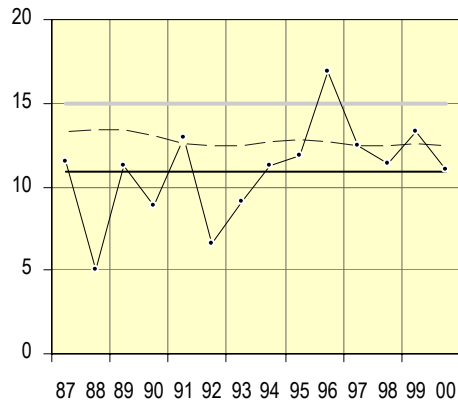


**Flickor**

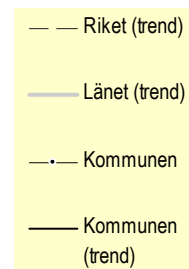
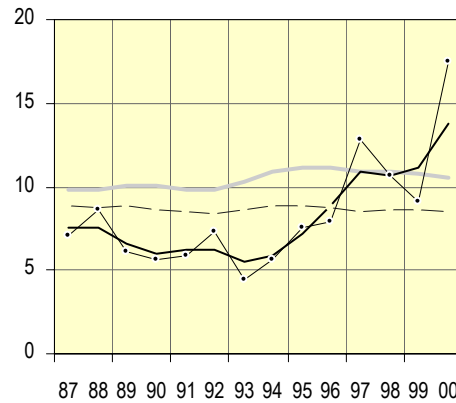


**Tranemo kommun**

**Pojkar**



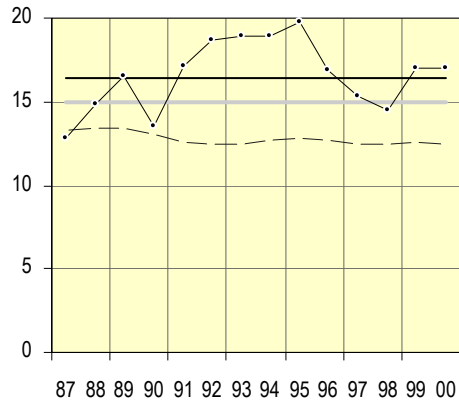
**Flickor**



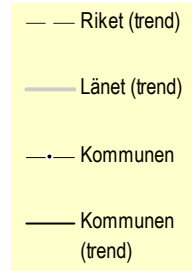
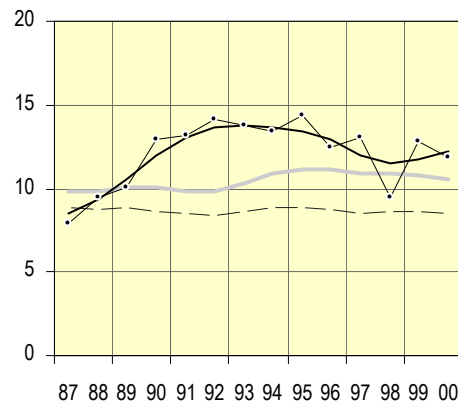


**Trollhättans kommun**

**Pojkar**

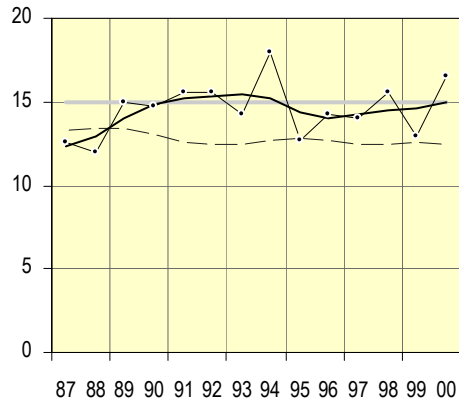


**Flickor**

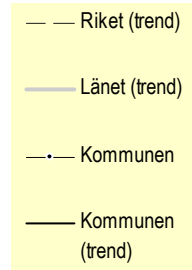
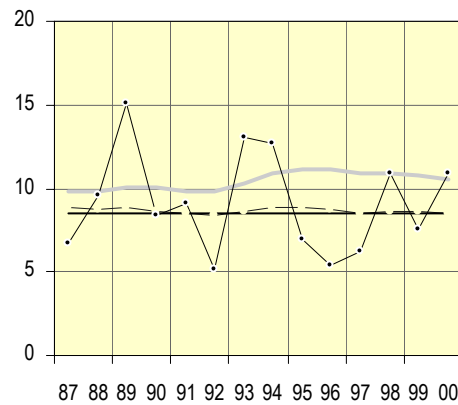


**Töreboda kommun**

**Pojkar**

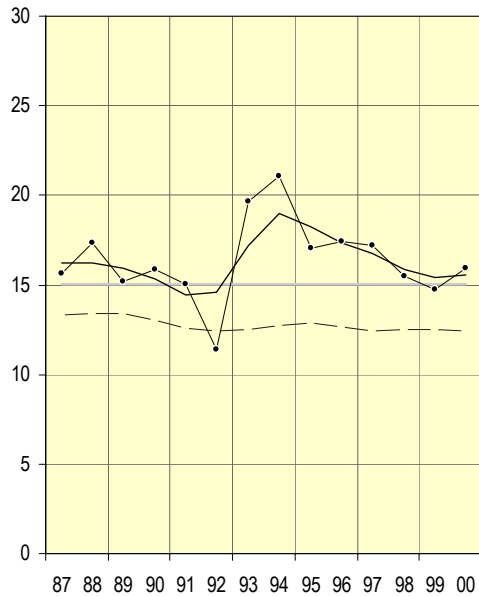


**Flickor**

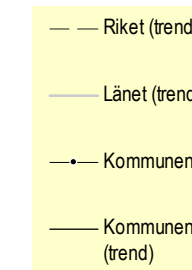
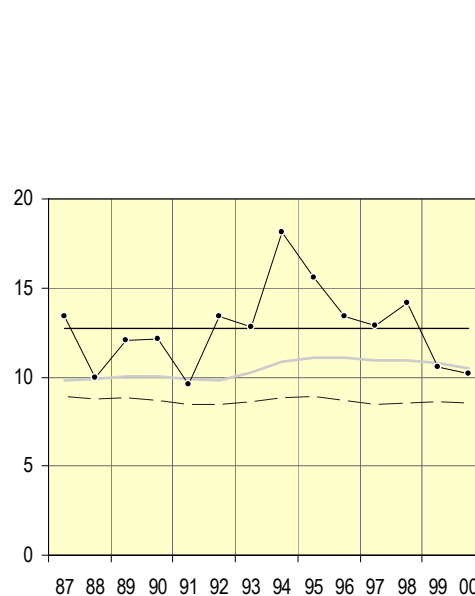


**Uddevalla kommun**

**Pojkar**

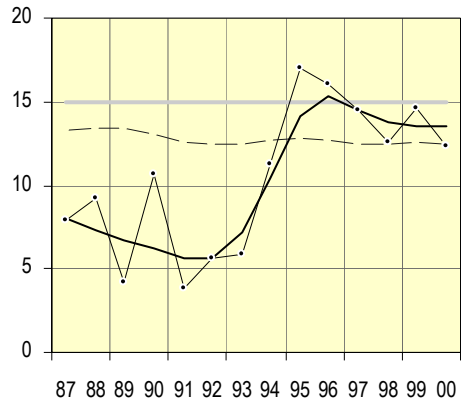


**Flickor**

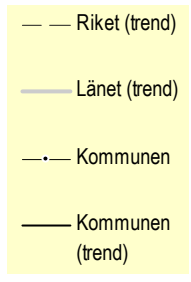
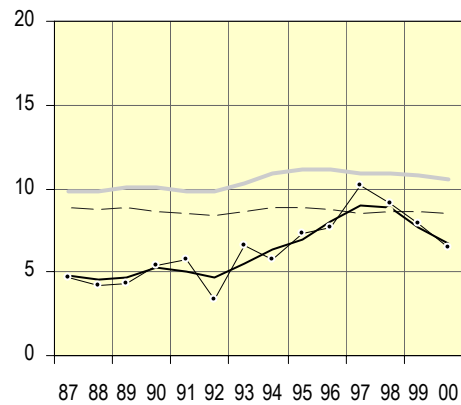


**Ulricehamns kommun**

**Pojkar**

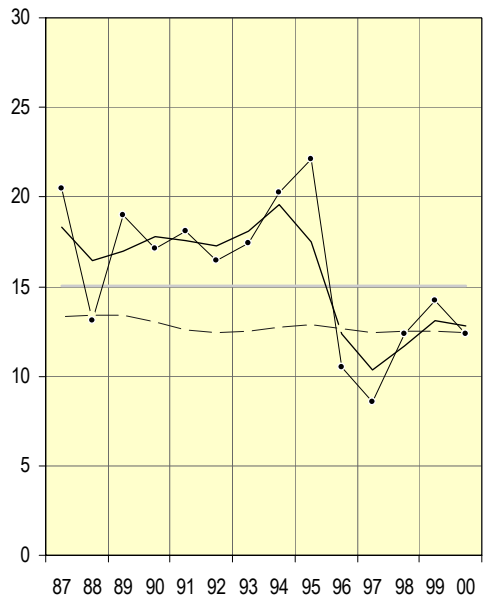


**Flickor**

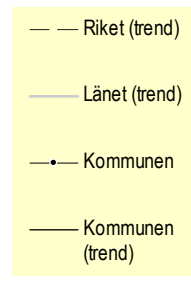
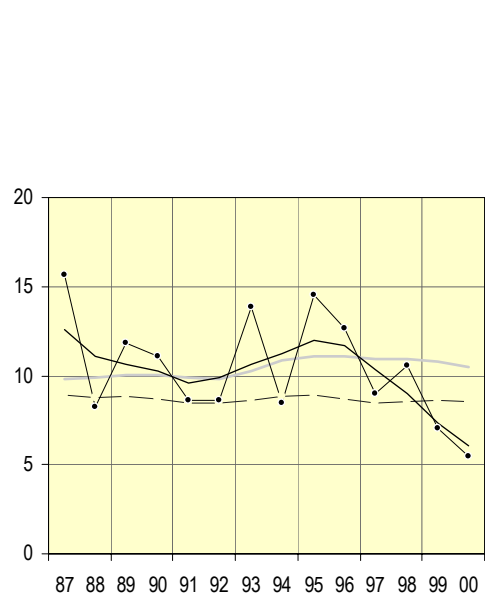


**Vara kommun**

**Pojkar**

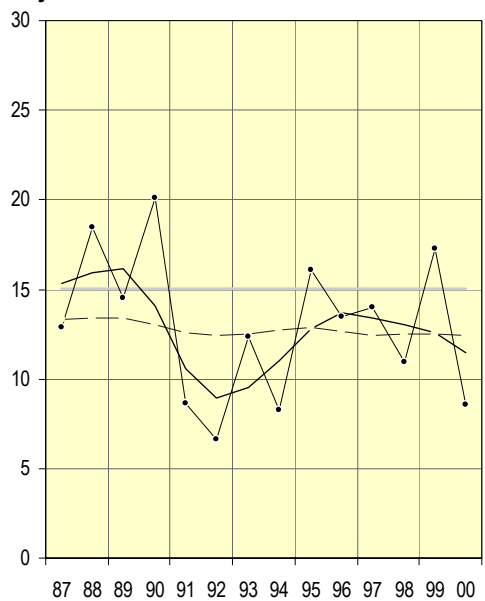


**Flickor**

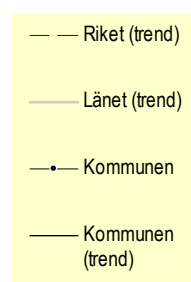
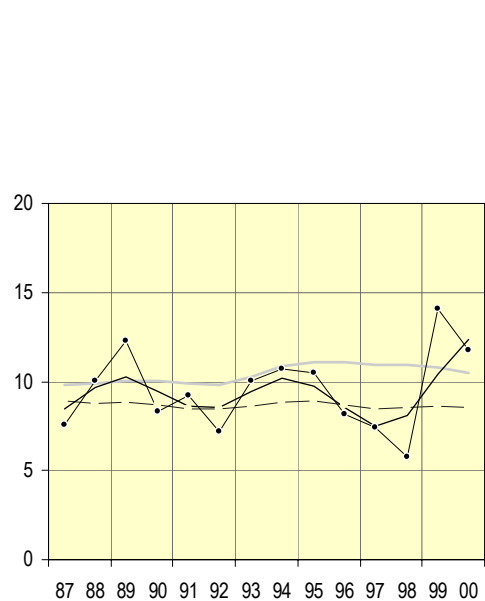


**Vårgårda kommun**

**Pojkar**

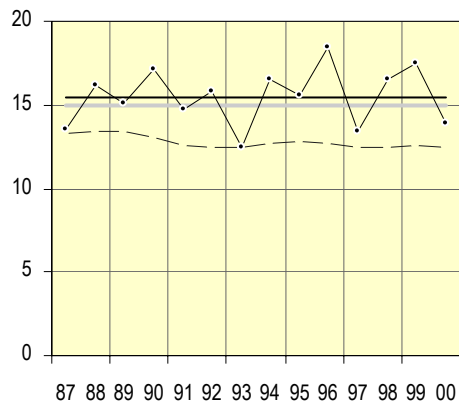


**Flickor**

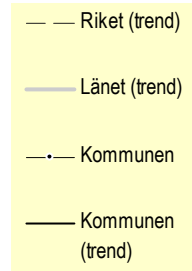
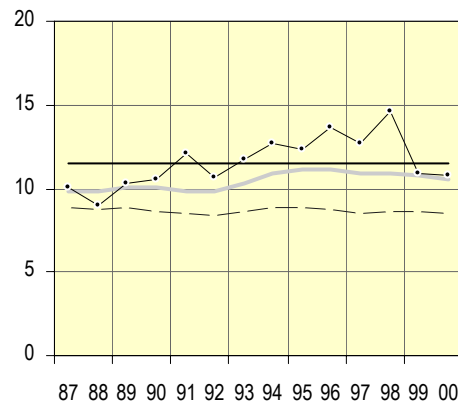


**Vänersborgs kommun**

**Pojkar**

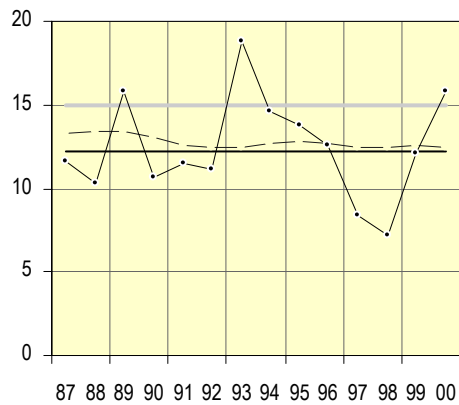


**Flickor**

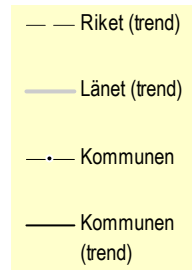
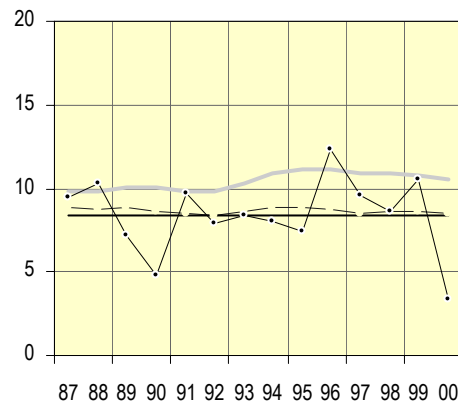


**Ämåls kommun**

**Pojkar**

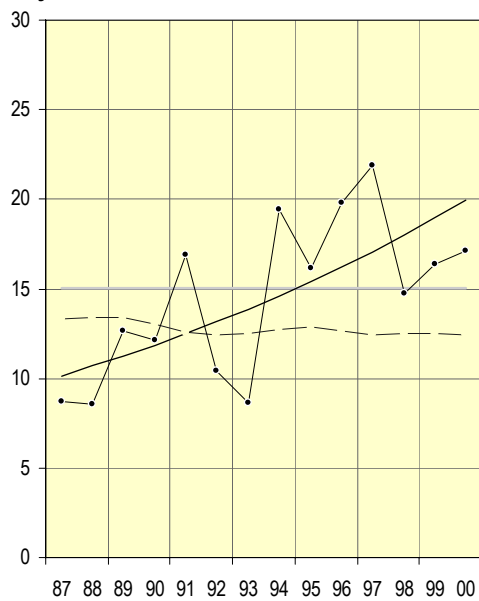


**Flickor**

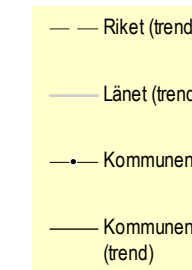
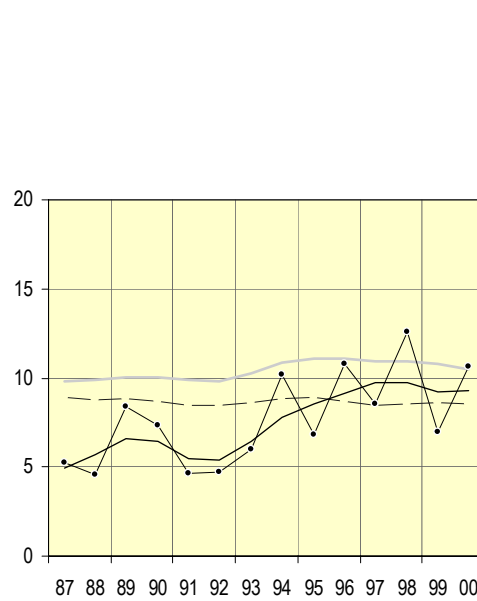


**Öckerö kommun**

**Pojkar**



**Flickor**



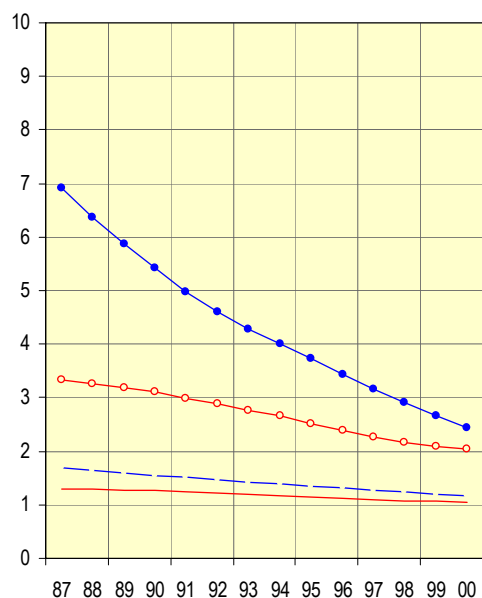
### Antal skadade per 1000 barn 0-20 år i länet fördelat på skadetyper, kön och åldersgrupp, aktuell nivå 2000 samt procentuell förändring 1999-2000

Skadetyper	Pojkar					
	0-12 år			13-20 år		
	Nivå 2000	Förändring (%) 99-00	Säkerställd förändring	Nivå 2000	Förändring (%) 99-00	Säkerställd förändring
Vägtransportolycka	1,2	-2,8	*	2,4	-8,6	*
Fallolycka	5,9	2,3	*	4,0	-5,3	
Annat olycksfall; drunkning, förgiftn, brand, övrigt	2,1	-6,5		2,7	-5,2	
Avsiktligt tillfogad skada	0,1	3,6		1,0	-4,3	

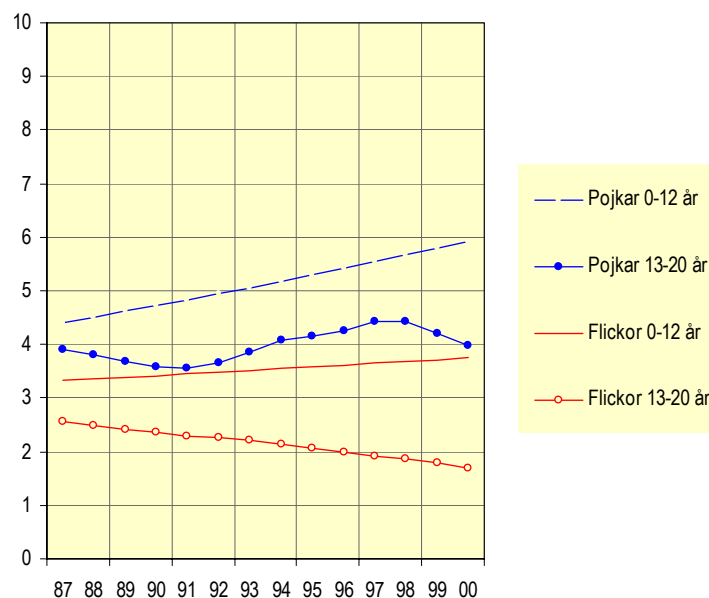
Skadetyper	Flickor					
	0-12 år			13-20 år		
	Nivå 2000	Förändring (%) 99-00	Säkerställd förändring	Nivå 2000	Förändring (%) 99-00	Säkerställd förändring
Vägtransportolycka	1,1	-0,7		2,0	-3,1	
Fallolycka	3,7	0,9		1,7	-4,5	
Annat olycksfall; drunkning, förgiftn, brand, övrigt	1,8	-2,0	*	1,7	-1,1	*
Avsiktligt tillfogad skada	0,1	3,6		2,1	-0,3	

\* Säkerställd förändring mellan år 1999 och 2000 med 95% signifikans

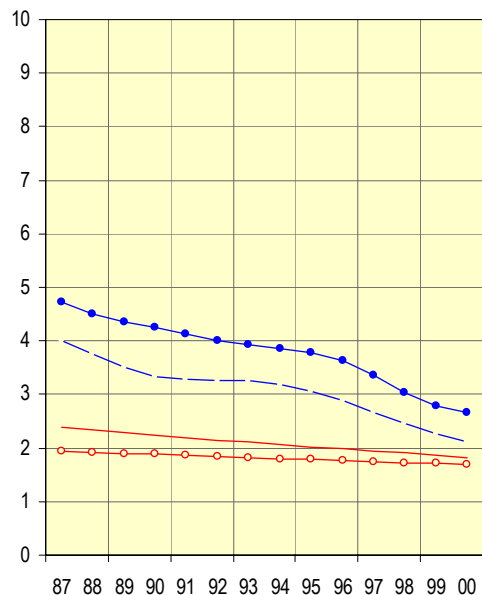
Antal skadade per 1000 barn 0-20 år till följd av vägtransportolycka 1987-2000



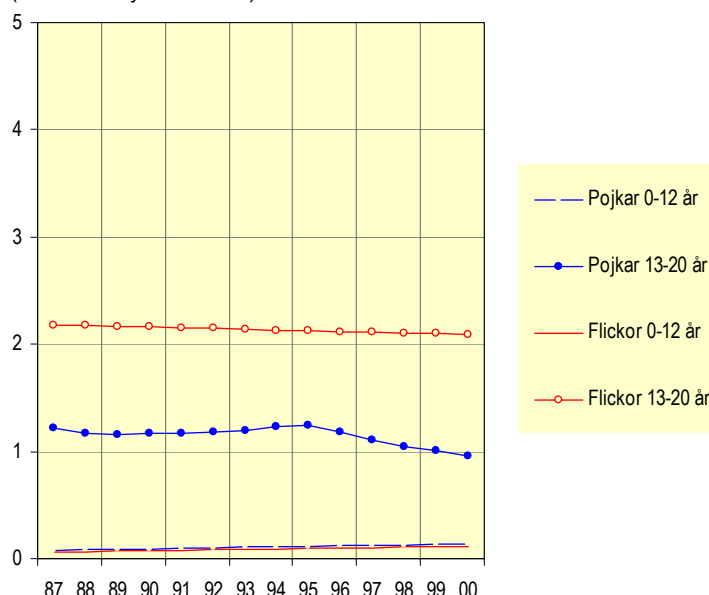
Antal skadade per 1000 barn 0-20 år till följd av fallolycka 1987-2000



Antal skadade per 1000 barn 0-20 år till följd av annat olycksfall 1987-2000



Antal skadade per 1000 barn 0-20 år till följd av avsiktligt tillfogad skada 1987-2000 (observera bytet av skala)



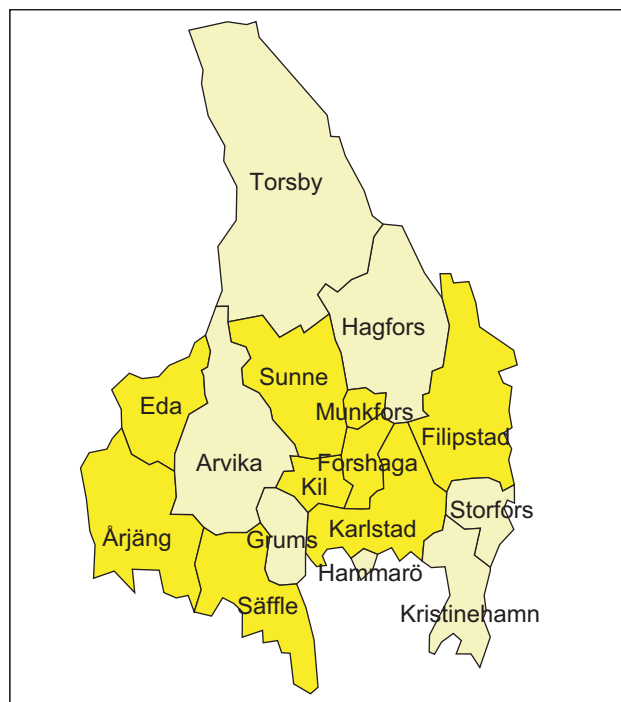
## Antal skadade per 1000 barn 0-20 år (samtliga skadetyper) fördelat på kön, kommun, län och riket, aktuell nivå 2000 samt procentuell förändring 1999-2000

Kommun/ Län/ Riket	Pojk			Flickor			Översikt 1987-2000		Antal barn 0-20 år i befolkningen, 2000
	Aktuell nivå, 2000	Aktuell föränd- ring (%), 99-00	Säker- ställd föränd- ring	Aktuell nivå, 2000	Aktuell föränd- ring (%), 99-00	Säker- ställd föränd- ring	Totalt antal skadade barn	Antal per år	
Arvika	5,9	-12,5		4,9	-9,7		730	52,1	6 290
Eda	10,8	0,0		6,4	-15,3		310	22,1	2 093
Filipstad	9,9	-5,0		7,8	0,0		389	27,8	2 634
Forshaga	10,0	0,0		8,0	10,7		411	29,4	3 302
Grums	6,2	-15,0		12,3	34,2		413	29,5	2 412
Hagfors	8,8	2,4		6,3	-2,0	*	470	33,6	3 149
Hammarö	7,3	0,0		7,2	0,0		446	31,9	4 123
Karlstad	10,4	-3,3		8,0	6,1		2 363	168,8	19 118
Kil	11,1	0,0		6,6	-7,5		454	32,4	3 389
Kristinehamn	7,2	13,7		4,6	-7,1		922	65,9	5 791
Munkfors	11,2	-2,4		8,0	4,6		135	9,6	904
Storfors	3,5	-15,5		7,5	1,9		170	12,1	1 210
Sunne	10,3	-9,0		5,2	-11,1		461	32,9	3 516
Säffle <sup>1)</sup>	11,2	0,1		8,1	0,1		739	52,8	4 045
Torsby	8,7	-5,7	*	10,0	0,0		560	40,0	3 228
Arjäng	10,3	-5,6		4,4	-15,6		312	22,3	2 397
Länet totalt	9,3	-4,2		7,1	-1,1	*	9 285	663,2	67 601
Riket totalt	12,4	-0,8		8,5	-1,0		332 605	23 757,5	2 243 627

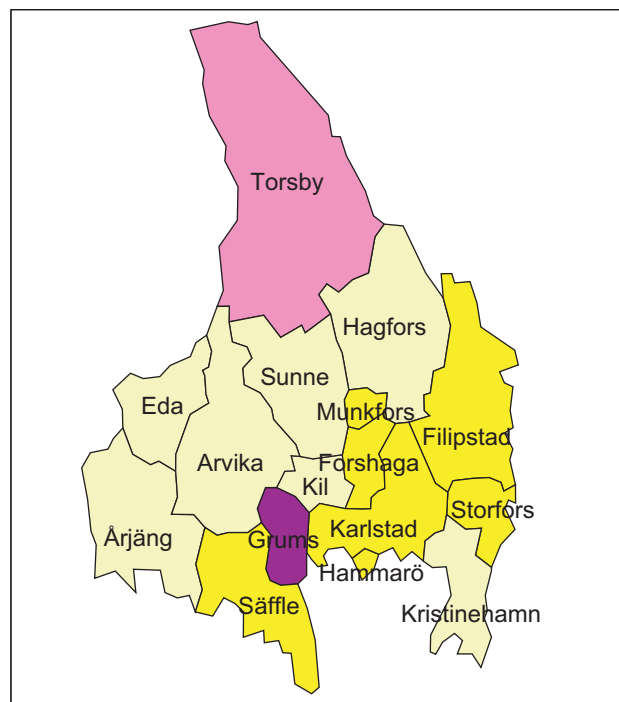
\* Säkerställd förändring mellan år 1999 och 2000 med 95% signifikans

<sup>1)</sup> Värden för år 1999. För stort bortfall år 2000 för att värden ska redovisas.

### Skadade pojkar 0-20 år – aktuell nivå 2000



### Skadade flickor 0-20 år – aktuell nivå 2000



#### Skadade pojkar/1000

- 14,8 till 26,8
- 12,3 till 14,8
- 9,9 till 12,3
- 3,5 till 9,9

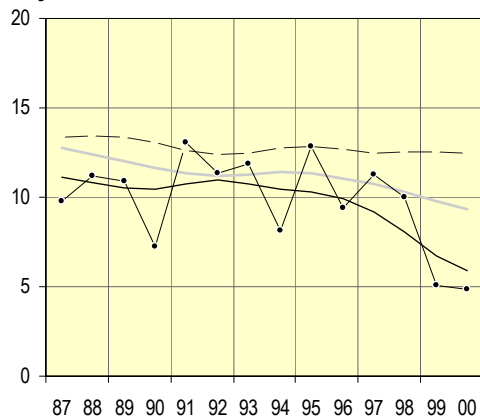
#### Skadade flickor/1000

- 10,1 till 14,9
- 8,4 till 10,1
- 6,7 till 8,4
- 2,3 till 6,7

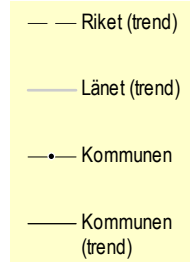
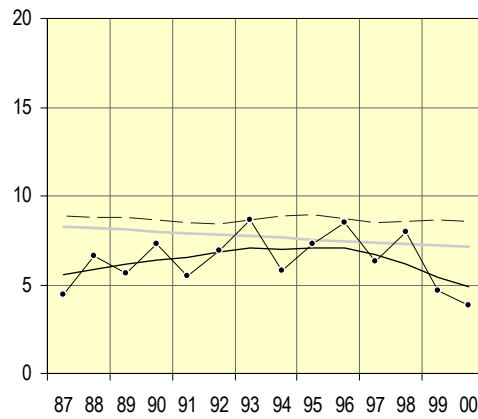
**Antal skadade per 1000 barn 0-20 år (samtliga skadetyper) 1987-2000 fördelat på kön, kommun samt trend för kommun, län och riket**

**Arvika kommun**

**Pojkar**

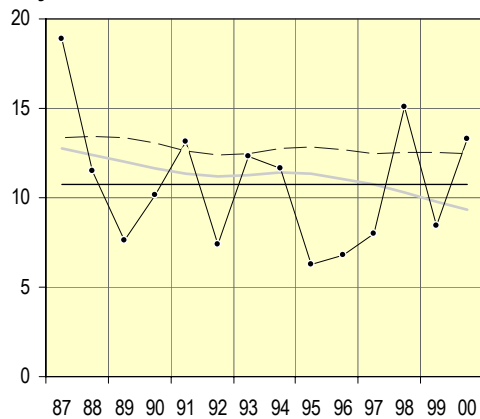


**Flickor**

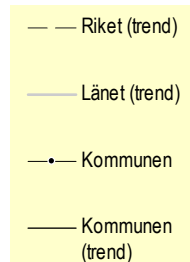
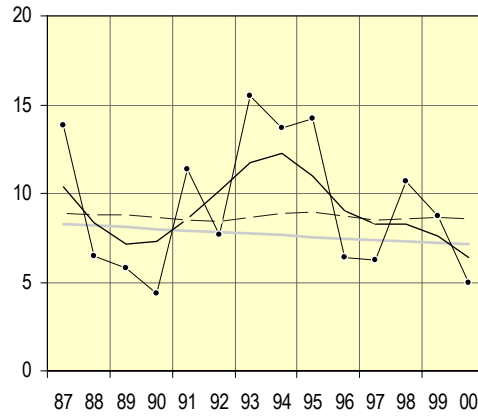


**Eda kommun**

**Pojkar**

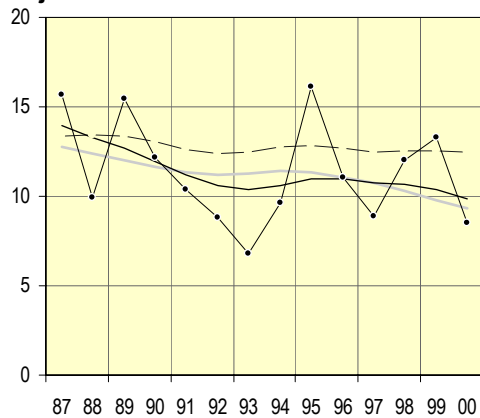


**Flickor**

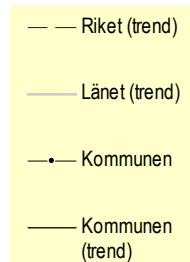
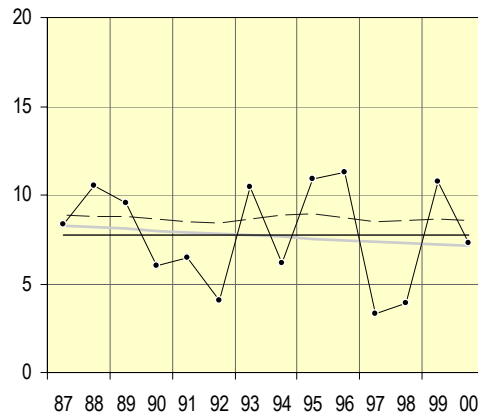


**Filipstads kommun**

**Pojkar**

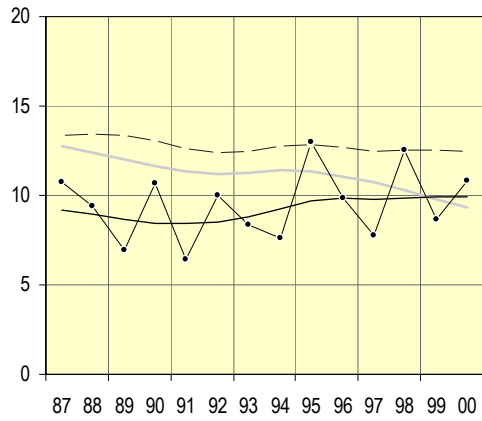


**Flickor**

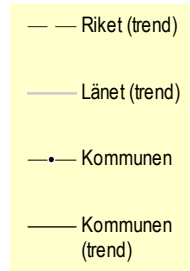
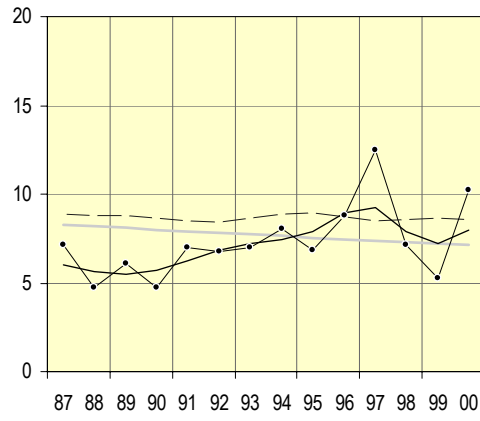


**Forshaga kommun**

**Pojkar**

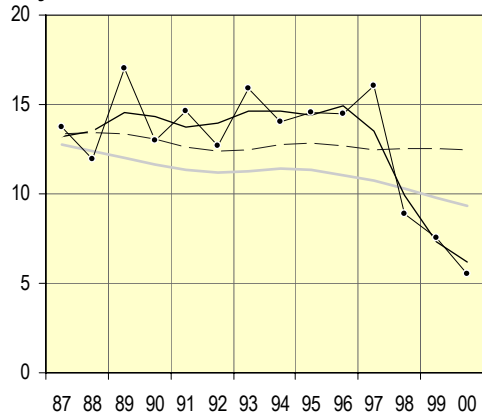


**Flickor**

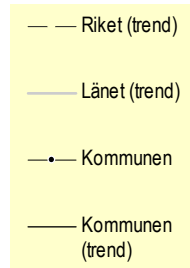
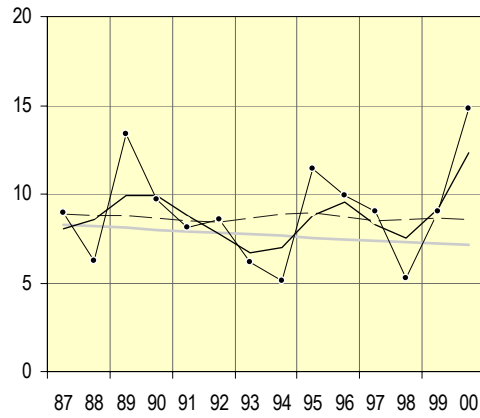


**Grums kommun**

**Pojkar**

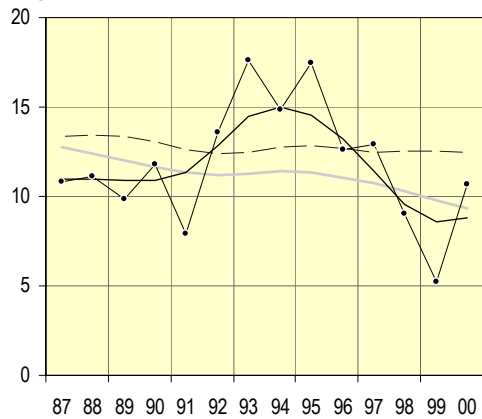


**Flickor**

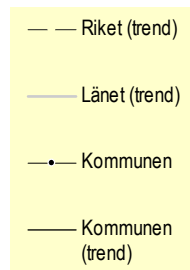
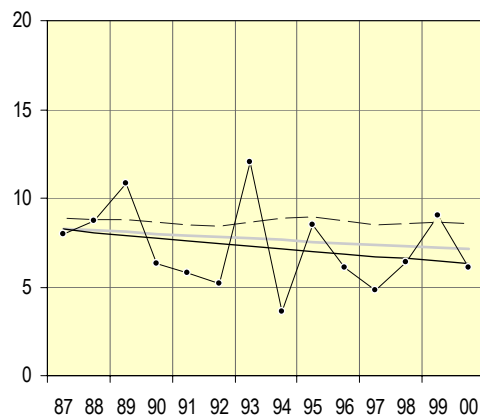


**Hagfors kommun**

**Pojkar**

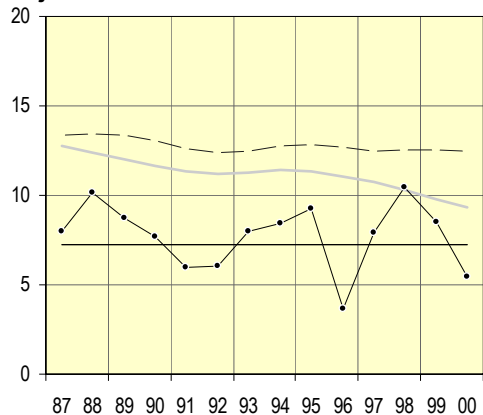


**Flickor**

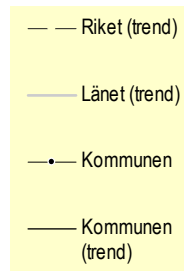
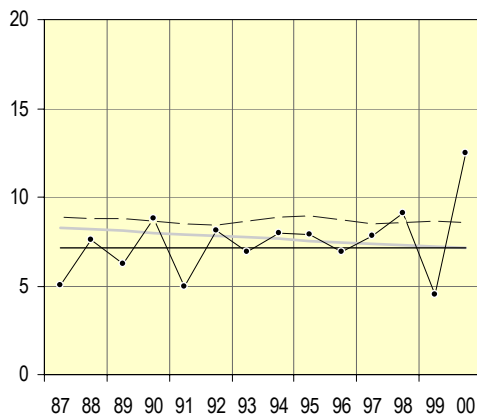


**Hammarö kommun**

**Pojkar**

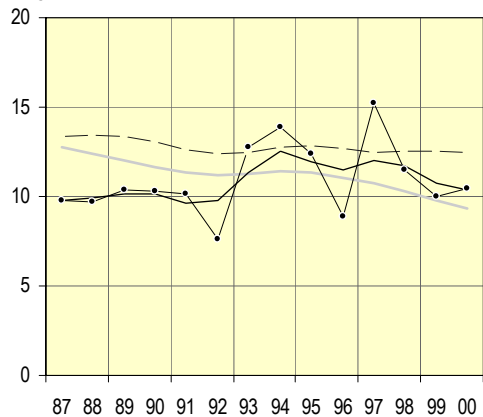


**Flickor**

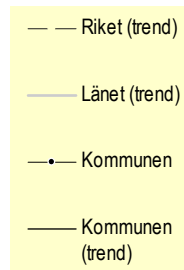
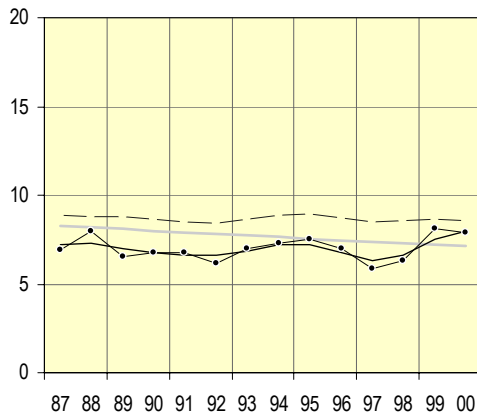


**Karlstads kommun**

**Pojkar**

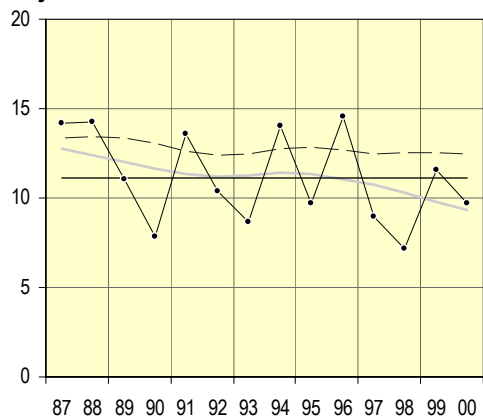


**Flickor**

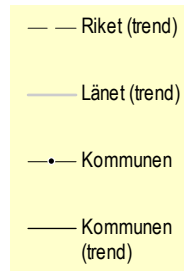
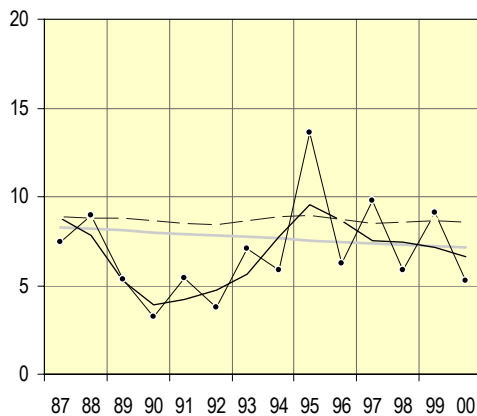


**Kils kommun**

**Pojkar**



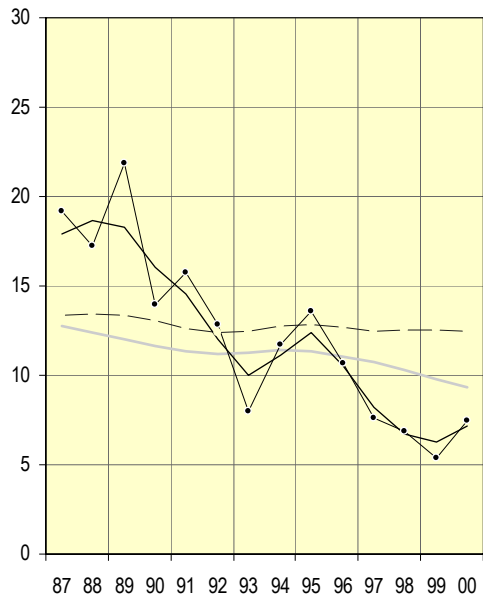
**Flickor**



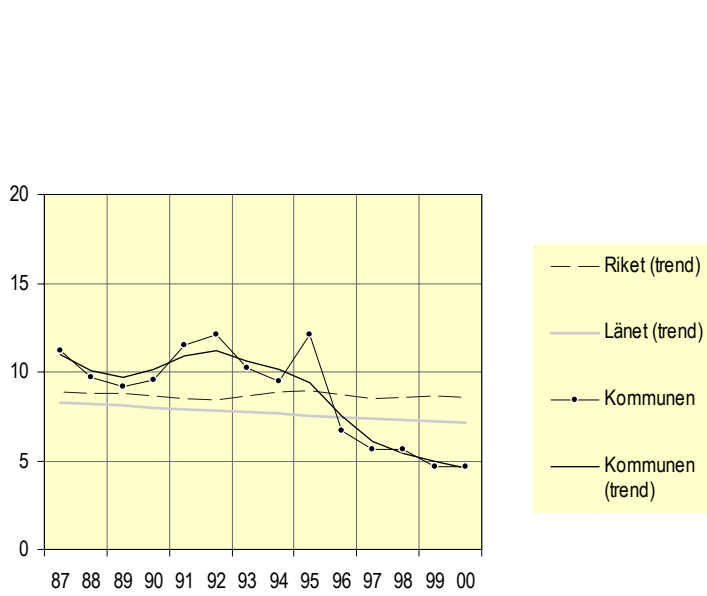


**Kristinehamns kommun**

**Pojkar**

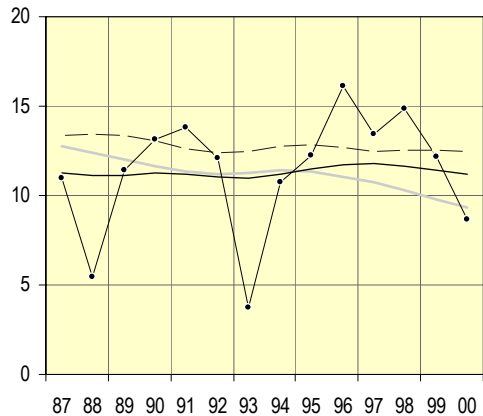


**Flickor**

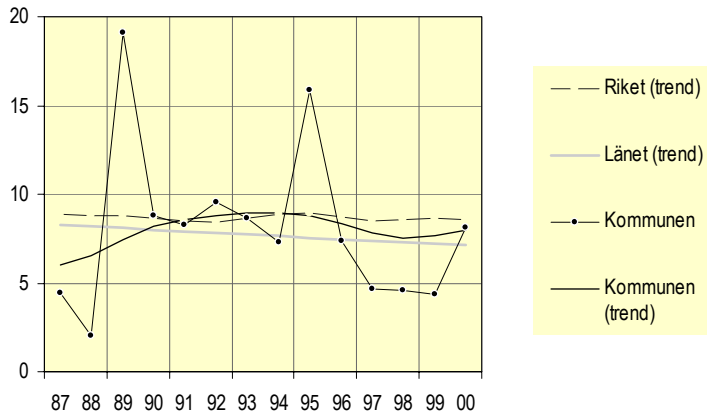


**Munkfors kommun**

**Pojkar**

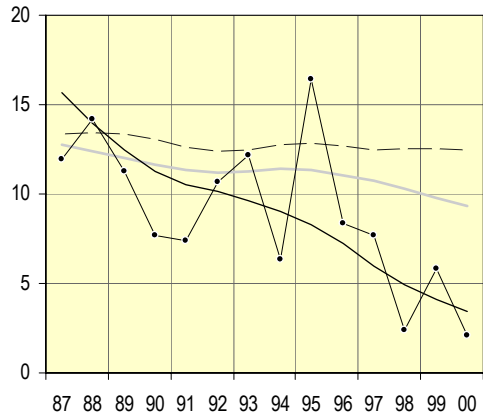


**Flickor**

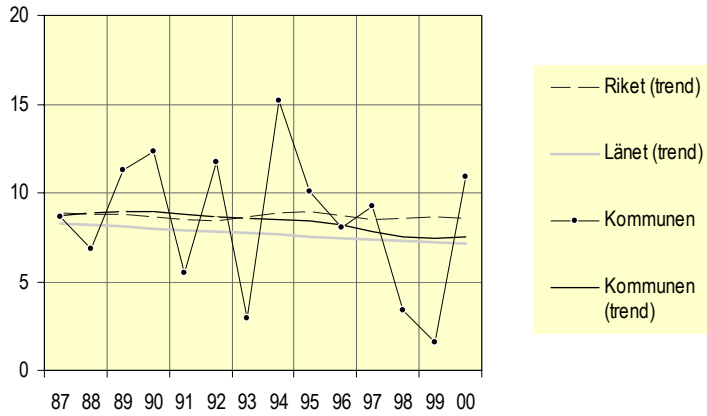


**Storfors kommun**

**Pojkar**

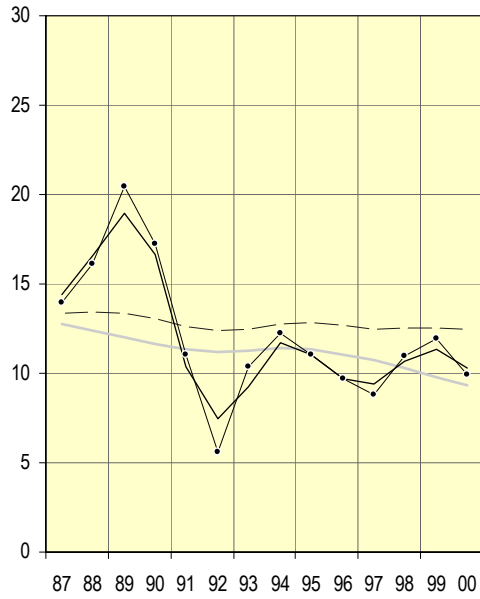


**Flickor**

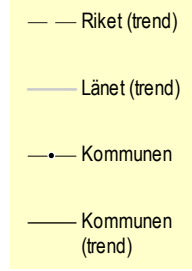
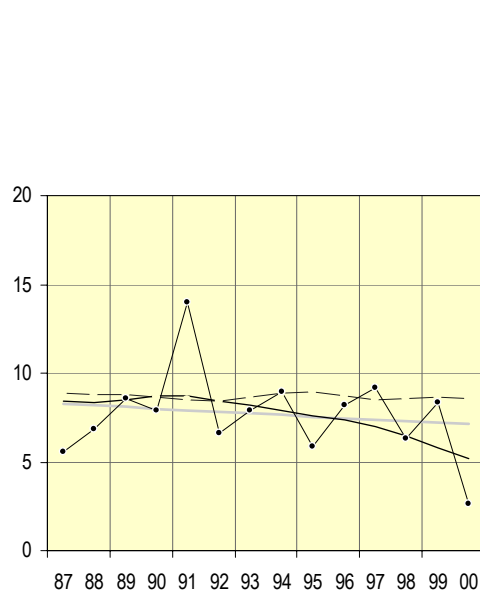


**Sunne kommun**

**Pojkar**

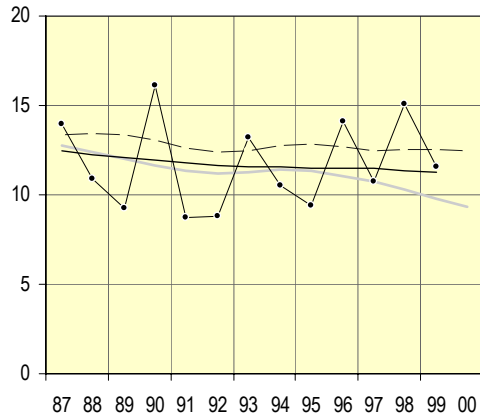


**Flickor**

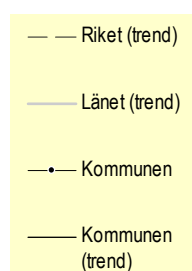
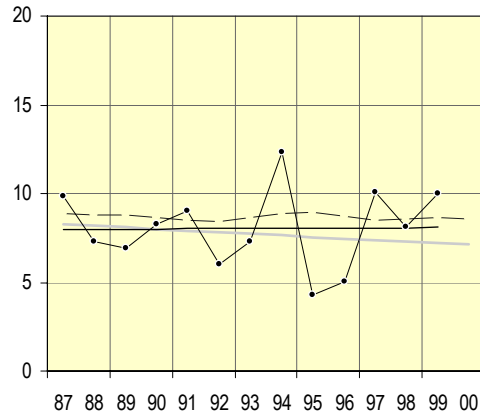


**Säffle kommun**

**Pojkar**

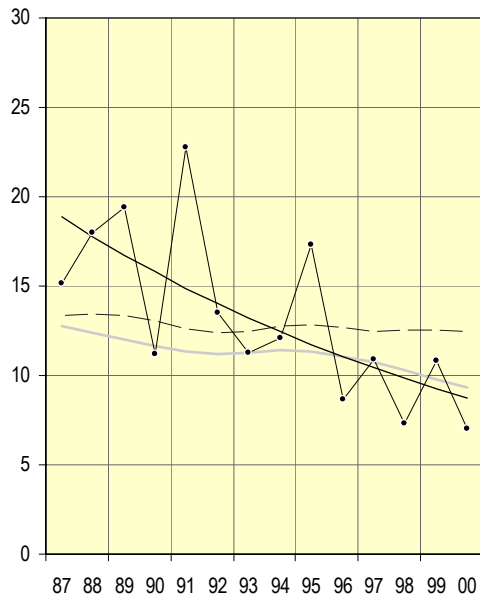


**Flickor**

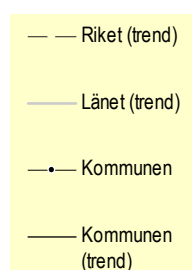
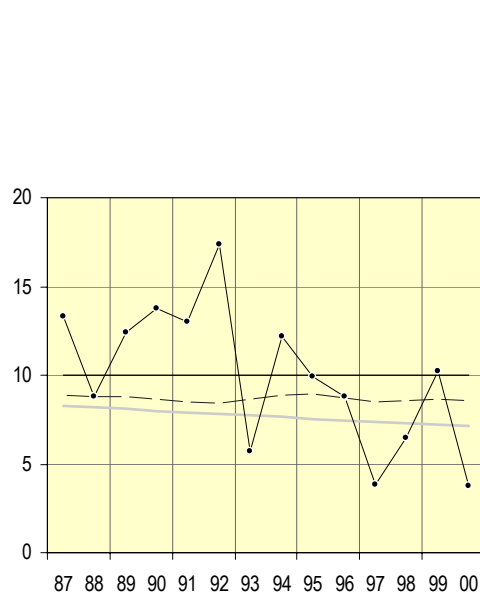


**Torsby kommun**

**Pojkar**

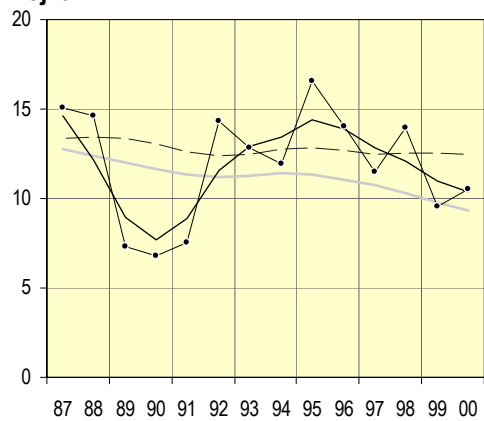


**Flickor**



Ärjäns kommun

Pojkar



Flickor

