



MULTIPLE IMAGE ANNOTATIONS

Except for text and voice recordings and annotations, featuring **GPS and compass functions** to automatically add location and direction information to the image, helping to improve inspection efficiency and productivity.



SPECIFICATIONS

		SP60
Thermal Module	IR Resolution	640 x 480 (307, 200 pixels)
	NETD	< 0.03°C (30 mK) at 25°C (77°F) Ambient temperature, F# = 1.0
	Focal Length	L8: 77.4 mm, L12: 51.4 mm, L25: 25.0 mm, L50: 12.6 mm
	FOV (Field of View)	L8: 8.0° H × 6.0° V, L12: 12.0° H × 9.0° V, L25: 24.8° H × 18.7° V, L50: 50.0° H × 37.3° V
	Image Frequency	25 Hz
Optical Module	Focus	Continuous Autofocus/Autofocus/Manual Focus/Laser Assisted Focus
	IFOV (Spatial Resolution)	L8: 0.22 mrad, L12: 0.33 mrad, L25: 0.68 mrad, L50: 1.35 mrad
	Picture Resolution	Configurable: 2 MP, 5 MP, 8 MP
Image Display	Display	1280 × 720 Resolution, 5" LCD Touch Screen
	Color Palettes	7: White Hot, Black Hot, Rainbow, Ironbow, Red Hot, Fusion, Rain
	Image Modes	4: Thermal/Optical/Fusion/PIP
Measurement and Analysis	Object Temperature Range	-20 °C to 650 °C (-4 °F to 1202 °F)
	Accuracy	Max (±2°C/3.6°F, ±2%)
	Measurement Presets	Center Spot, Hot Spot, Cold Spot, Point Presets, 10 User Preset Points, 1 User Preset Line, 3 User Presets Areas, Off
	High Temperature Alarm	Audible Warning
	Color Alarm (Isotherm)	Above/Below/Interval/Insulation
Storage	Storage Media	Default Storage: Removable SD Card (64 GB), Max. Storage Capacity: 128 GB
	Image Storage Capacity	Approx. 60,000 Images (The size of a single image is about 900kb~1.3Mb)
	Image File Format	Radiometric image with Measurement Data Included, JPEG Image without Measurement Data Included
	Video Storage Capacity	Approx. 64 Hours (The size of a 1-minute video is about 15~20Mb)
	Video File Format	Standard MP4 Non-radiometric video
Functions	Laser Pointer	Yes
	Laser Distance Meter	Yes
	LED Light	Yes
	Wi-Fi	802.11 b/g/n (2.4 GHz)
	Level/Span	Auto/Manual/1-Tap Level & Span
	Bluetooth	Bluetooth 4.2
	Interface	USB Type-C, HDMI-D, 64 GB SD card
	Geolocation	Location data automatically added to every image from the built-in GPS, BDS, GLONASS or GALILEO
	Compass	Camera direction automatically added to every image
Power System	Battery Operating Time	4 Hours Continuous Running per battery (actual life varies depending on settings and usage)
	Menu Language	21 Languages
General	Protection Level	IP54
	Drop Test Height	2 m (6.56 ft)
	Weight	Approx. 1590 g (3.51 lb)

*Please note that all features, functionality, and other product specifications are subject to change without notice. For the most up-to-date information, go to www.hikmicrotech.com



SP SERIES

HIGH-PERFORMANCE THERMAL IMAGING CAMERA WITH VIEWFINDER, ARTICULATING LENS AND SCREEN



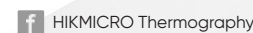
HIKMICRO ANALYZER SOFTWARE

Included software offers flexible ways (points, lines, rectangles, circles, polygons) to analyze the information of captured images for generating reports.

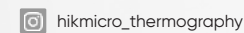


FAST COMMUNICATION

Connect (via Wi-Fi or Hotspot) to the HIKMICRO Viewer App for transmitting pictures from the camera to a mobile phone. Analyze, share images and generate reports in real-time, on-site.



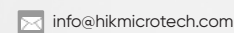
HIKMICRO Thermography



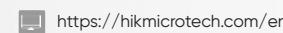
hikmicro_thermography



HIKMICRO Thermography



info@hikmicrotech.com



<https://hikmicrotech.com/en>



HIKMICRO

ULTRA-HIGH PERFORMANCE AND MAXIMUM FLEXIBILITY TOOLS FOR EXPERTS

HIKMICRO SP60 high-performance thermal camera is the best price-performance ratio in the premium class on the market. With its ultra-high thermal resolution, high-temperature accuracy, and crisp image clarity, the SP60 is ideal for industrial, oil and gas, and predictive and utility maintenance inspections.



EMBEDDED LASER DISTANCE METER

Integrated laser distance meter provide accurate distance from long distance, more convenient in setting parameter and generate report.



MINIMIZE SUN GLARE

The 1024 x 768 OLED electronic viewfinder and auto-brightness 5" color LCD touch display make it easy to conduct outdoor inspections under bright, challenging light conditions.



ULTRA HIGH RESOLUTION

A highly sensitive HIKMICRO VOx detector (NETD < 30 mK) with **640 x 480** (307,200 pixels) IR resolution, provides a distinct thermal image of the target.



FLEXIBLE ROTATING LENS AND SCREEN

The 90° rotating screen with automatic orientation and the 180° rotating lens design help to easily view the area around, between, above, or below the target.

180°

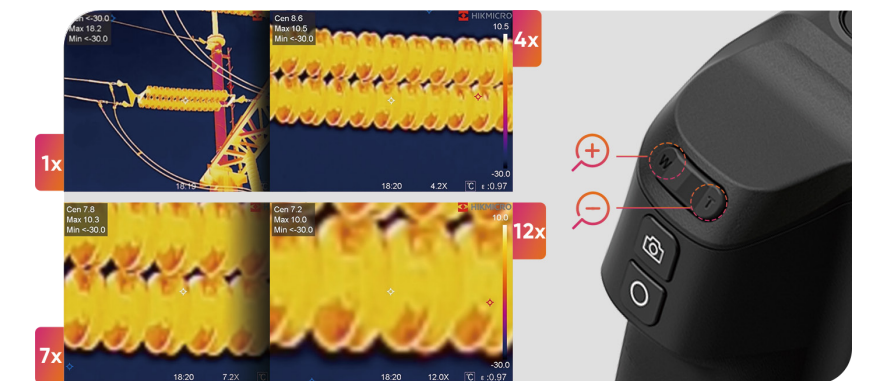


90°



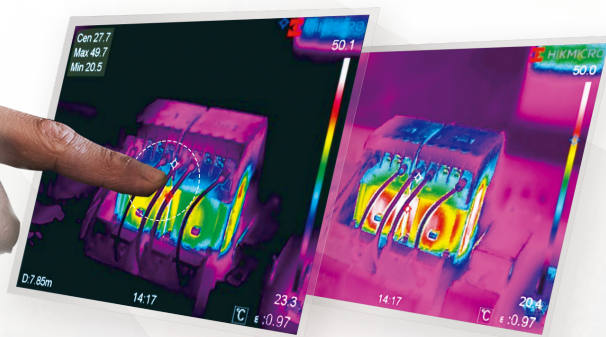
CONTINUOUS DIGITAL ZOOM

The 90° rotating screen with automatic orientation and the 180° rotating lens design help to easily view the area around, between, above, or below the target.



MULTIPLE LEVEL & SPAN MODE

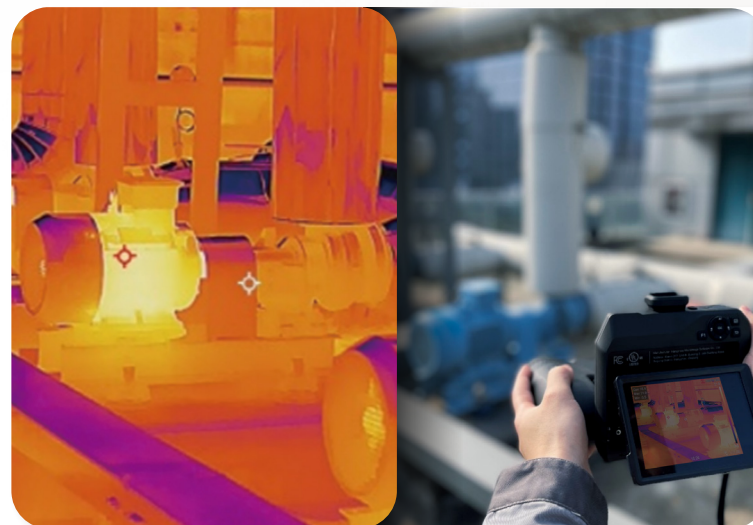
Supports 3-level/span modes (manual, automatic, and 1-Tap) helping to instantly improve image contrast and highlight potential problems.



ONE-SECOND FAST FOCUSING



Supports 4 types of focus mode (manual focus, continuous autofocus, autofocus, and laser-assisted focus) and one-second fast focusing speed helps to save time by giving sharper images, resulting in more accurate temperature measurements.



EXTENSIVE RANGE OF INTERCHANGEABLE LENSES

Interchangeable Lens L8, L12, L25, and L50 are available. Different lenses give different Fields Of View, giving you more options in different scenarios.