



OUTDOOR PRODUCTS

See the World in a New Way

A person wearing a dark cap is looking through a HIKMICRO thermal imaging device. The device is black and red, with the HIKMICRO logo and 'DH35' visible. In the foreground, a rifle with a scope is mounted on a tripod. The background is a blurred outdoor scene with a bright light source, possibly the sun, creating a lens flare effect.

ABOUT HIKMICRO

HIKMICRO is a leading provider of thermal imaging equipment and solutions. Specializing in SoC and MEMS design, development, and manufacturing, the company offers thermal detectors, cores, modules, cameras and total solutions to the global market, serving customers in more than 100 countries and regions.

2008

Started
investing in thermal technology

2010

Released
the first thermal network camera

2016

HIKMICRO was founded
Released a full portfolio of thermal security products with fully optimized imaging, algorithms and intelligence



2018

Released 17 μm 384x288 / 640x512 detectors
Released outdoor and handheld thermography products



2019

Released 17 μm 160x120 detectors
Released 160*120 series products to meet the needs of niche market, such as short-range perimeter defense and indoor fire prevention



2020

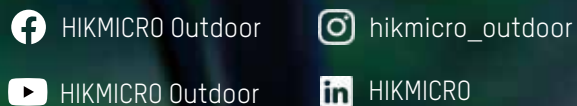
Released 12 μm 256x192 / 384x288 / 640x512 detectors
Powerful V0x12 μm imaging sensor presents clear and detailed pictures, and offers new experience in observation.

2021

Released 12 μm 1280x1024 detectors
In-house 12 μm detectors were widely used on thermal products.



Follow us





CONTENTS

Thermal Monoculars

LYNX & LYNX Pro	5
OWL	8
GRYPHON & GRYPHON LRF	10

Thermal Scopes

THUNDER & THUNDER Pro	16
PANTHER LRF	20

Thermal Clip-On

THUNDER & THUNDER Pro	24
-----------------------------	----

Thermal Binoculars

TS16 & TS36	28
-------------------	----

Accessories

.....	31
-------	----

Monocular

LYNX & LYNX Pro

Compact Size,
Easy to Carry



17 μ m
LYNX

12 μ m
LYNX Pro



Extended Operating Time

The design of low power consumption makes the continuous operating time up to 10 hours.



Advanced VOx 12 μ m Imaging Sensor

For the powerful VOx 12 μ m imaging sensor with NETD<35mK ensure the perfect distinction of the target and present clear and detailed pictures even in complete darkness.

Manual Focus

Control the image, observe the target clearly at greater distances.



Wi-Fi Hot Spot for Mobile APP

Integrated Wi-Fi module makes T-Vision app as a second display. Users can remote control, adjust settings, upgrade firmware. Enabling the captured image being easily uploaded to social media.



Variable Digital Zoom

Digital zoom up to 8x enables better focus on small target from a greater distance.

Video and Snapshot

Onboard 16GB memory offers storage space for the snapshots and video clips.

	LYNX		LYNX Pro				
	LC06	L15	LE10	LE15	LH15	LH19	LH25
Sensor	160×120, 17 μm	384×288, 17 μm	256×192, 12 μm		384×288, 12 μm		
Focal Length	6.2 mm / F1.1	15 mm / F1.0	10 mm, F1.0	15 mm, F1.0	15 mm, F1.0	19 mm, F1.0	25 mm, F1.0
Magnification	0.6 - 2.4, ×4	0.6 - 4.8, ×8	1.0 - 8.0, 8x	1.5 - 12.0, 8x	1.5 - 12.0, 8x	1.9 - 15.2, 8x	2.5 - 20.0, 8x
FOV	24.7°×18.7°	24.6°×18.5°	18.0° × 13.6°	11.7° × 8.8°	17.5°×13.1°	13.8°×10.4°	10.5°×7.9°
Frame Rate	25Hz	50Hz	25Hz		50Hz		
Manual Focus	No		No			Yes	
Micro Display	0.2 inch, LCOS, 720 × 540		0.2 inch, LCOS, 720 × 540		0.4-inch, LCOS, 1280×960		
Operating Time	10 h	7 h	8 h		7.5 h		
Detection Range	250 m	550 m	500 m	750 m	750 m	900 m	1200 m
Operating Temperature	- 20 °C to 55 °C (- 4 °F to 131 °F)		- 20 °C to 55 °C (- 4 °F to 131 °F)				
Weight	250 g	270 g	260g	280g	290g	300g	310g



Vivid and Detailed Image & Smooth Video

OWL Series equipped with an up to 640x512 pixels thermal sensor (NETD<35mK) and large aperture F1.0 lens, which provide contrasted, sharp and clear image. 50 fps full frame delivers smooth video of dynamic scenes.

Up to 1300 m Detection Range

With high-sensitivity sensor and long-focus objective lens, OWL series can detect a 1.7m target at a distance up to 1300m.

Detection Range up to

1300_m

Monocular

OWL

Reliable and Durable Even in Extreme Environment

OWL Series benefits from high sensitivity Thermal Imaging Sensor, robust structural design, excellent environmental adaptability OLED display, and is fit for hazardous environment , even can work in low temperature of -30 degrees.



	OH25	OH35	OQ35
Sensor	384x288, 17μm		640x512, 17 μm
Focal Length	25 mm, F1.0	35 mm, F1.0	35 mm, F1.0
Magnification	1.7 - 13.6, x8	2.3 - 18.4, x8	1.4 - 11.2, x8
FOV	14.9°x11.2°	10.7°x8.0°	17.7°x14.2°
Frame Rate	50Hz		
Manual Focus	No	Yes	
Micro Display	0.39 inch, OLED, 1024x768		
Operating Time	7 h		5.5 h
Detection Range	900 m	1300 m	1300 m
Operating Temperature	- 30 °C to 55 °C (- 4 °F to 131 °F)		
Weight	460g	500g	500g



Manual Focus

Control the image, observe the target clearly at greater distances.



Variable Digital Zoom

Digital zoom up to 8x enables better focus on small target from a greater distance.

Fusion Monocular | NEW

GRYPHON

IMAGE
REVOLUTION



GRYPHON LRF
GH25L/GH35L/GQ35L

GRYPHON
GH25/GH35/GQ35

Bi-Spectrum Image Fusion Meet the Needs of All day & All-weather Observation

With thermal and optical images combined, the bi-spectrum image fusion function delivers a high-quality detailed image, offers a good experience of observation at whatever time in whatever weather.



+



=



Ergonomic Design

The grip of the device is covered with lychee pattern leather, and the rounded transitional design provides a comfortable grip, offering an excellent operating experience.



Advanced Technology

01. New Way to Control

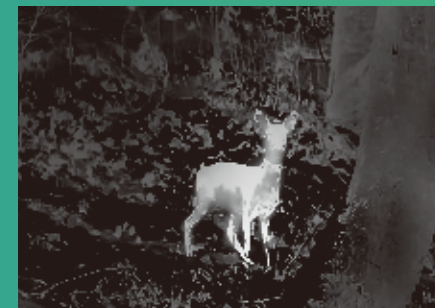
The wheel design is used for menu selection and zooming. Making the operation more natural.

Outstanding Image Algorithm

Self-developed image algorithm optimizes image quality, bringing users a high-definition and clearer picture, highlighting the edge of the object.



x1



x8



02. Built-in Precision Laser Rangefinder

The integrated laser range finder allows the user to determine the distance in various scenarios, which is critical to precision shooting.

Range up to

600_m

Accuracy of

± 1_m

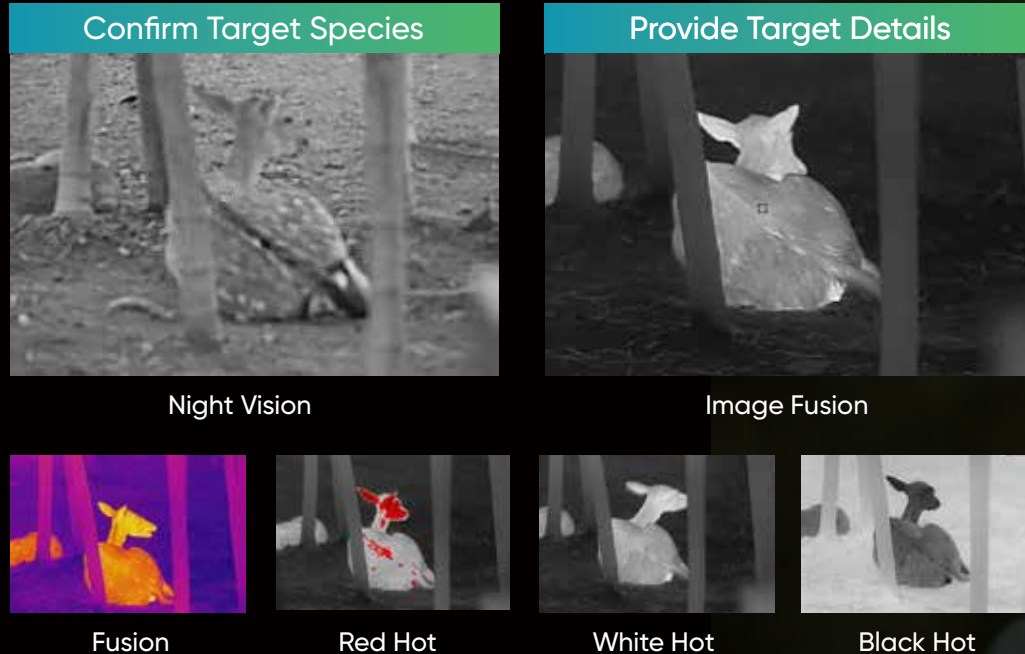
03. Replaceable Battery

Two batteries and HIKMICRO external battery charger are included in the package box, which give the freedom to observe as long as needed even a full day.



6 Image Modes

GRYPHON series provides 6 image modes for different scenarios.



Advanced VOx 12μm Imaging Sensor

The powerful VOx 12μm imaging sensor with NETD<35mK ensure the perfect distinction of the target and present clear and detailed pictures even in complete darkness.

12 μm

IMAGING SENSOR

35 mK

NETD



Large OLED Display

High resolution 0.39" 1024x768 OLED is capable of lower power consumption, wider viewing angle, and richer color, providing a better observation details.



	GRYPHON LRF			GRYPHON		
	GH25L	GH35L	GQ35L	GH25	GH35	GQ35
Thermal Sensor	384x288, 12 μm		640x512, 12 μm	384x288, 12 μm		640x512, 12 μm
NETD	< 35mK			< 35mK		
Lens	25 mm, F1.0	35 mm, F1.0	35mm / F1.0	25 mm, F1.0	35 mm, F1.0	35mm / F1.0
Magnification	2.39-19.12, 8x	3.35-26.8, 8x	2-16, 8x	2.39-19.12, 8x	3.35-26.8, 8x	2-16, 8x
FOV	10.53°x 7.9°	7.5° x 5.7°	10.97° x 8.82°	10.53°x 7.9°	7.5° x 5.7°	10.97° x 8.82°
Visible Camera	1/2" Progressive Scan CMOS, 1920x1080			1/2" Progressive Scan CMOS, 1920x1080		
Laser Rangefinder	Wavelength: 905 nm, Measurement range: up to 600 m, Accuracy: ±1 m			N/A		
Display	0.39-inch, 1024x768 OLED			0.39-inch, 1024x768 OLED		
Operating Time	Up to 6 h		Up to 4.5 h	Up to 6 h		Up to 4.5 h
Detection Range	1200 m	1800 m	1800 m	1200 m	1800 m	1800 m
Operating Temp.	-30°C ~ +55°C			-30°C ~ +55°C		
Weight	510g	510g	510g	480g	480g	480g

SCOPE

THUNDER & THUNDER Pro

17 μ m

THUNDER

12 μ m

THUNDER Pro



High Image Quality & Accurate Target Recognition

The powerful VOx 12 μ m imaging sensor with NETD<35mK and large aperture F1.0 lens ensure the perfect distinction of the target and present clear and detailed pictures even in complete darkness. 50 fps full frame delivers smooth video of dynamic scenes.

12 μ m

IMAGING SENSOR

35 mK

NETD

01. Outstanding Image Algorithm

Self-developed image algorithm optimizes image quality, bringing users a high-definition and clearer picture, highlighting the edge of the object.



8x

02. Variable Digital Zoom

Digital zoom up to 8x enables better focus on small target from a greater distance.

Reliability and Stability

The main body of the machine is made of high-strength plastic. The internal components are designed with precise reinforced articulation. The rail is made of 7075 aluminum alloy to ensure the high shock resistance, no deformation and no dry cracks.

01. IP67 Waterproof Rated

IP67 rated design creates protection from the rain, snow, even when it drops into 1 meter of the water up to 30 minutes.



02. High Shock Resistance

Metal housing rugged components provide high shock resistance up to 750g. Compatible with calibers up to .375 H&H, 12-gauge.

Ultra Long Detection Range

With the advanced imaging sensor and large-focus objective lens, THUNDER Pro series provides incredible detection capabilities, and can detect a 1.7m target at a distance up to 2600m.

Detection Range up to

2600_m

7075 aluminum alloy

ance

ents provides
g/ms on larger
ge and 9.3x64.

	THUNDER		THUNDER Pro		
	TH25	TH35	TE19	TE25	TQ50
Image Sensor	384×288, 17 μm		256×192, 12 μm		640×512, 12 μm
Frame Rate	50Hz		25Hz		50Hz
Lens	25 mm / F1.0	35 mm / F1.0	19 mm / F1.0	25mm / F1.0	50 mm / F1.0
Magnification	1.5 - 12.8x	2.2 - 17.6, 8x	2.5 - 20.0, 8x	3.3 - 26.4, 8x	2.6 - 20.8, 8x
FOV	14.9°×11.2°	10°×8°	9.2°×6.9°	7.0°×5.2°	8.7°×7.0°
Eye relief	45mm		45mm		
Display	0.39-inch, 1024 × 768 OLED		0.39-inch, 1024 × 768 OLED		
Detection Range	900m	1300 m	1000 m	1200 m	2600 m
Operating Time	4.5 h		5 h	4.5 h	3.6 h
Weight	390 g		425 g	436 g	492 g
Operating Temp.	20°C to 55°C (-4°F to 131°F)		20°C to 55°C (-4°F to 131°F)		

Scope

NEW

PANTHER LRF





Class-Leading Image Quality & Accurate Target Recognition

The powerful VOx 12 μ m imaging sensor with NETD<35mK and large aperture F1.0 lens ensure the perfect distinction of the target and present clear and detailed pictures even in complete darkness.

50 fps full frame delivers smooth video of dynamic scenes.

Ultra Long Detection Range

With the advanced imaging sensor and large-focus objective lens, PANTHER series provides incredible detection capabilities, and can detect a 1.7m target at a distance up to 2600m.



Integrated Design and Hassle-free Operating Experience

PANTHER series adopts one-style design with compact and reasonable structure, it provides consumers with hassle-free operate experience.



01. New Way to Control

The wheel design is used for menu selection and zooming. Making the operation more natural.



02. Built-in Precision Laser Rangefinder

The integrated laser range finder allows the user to determine the distance in various scenarios, which is critical to precision shooting.





03. High Shock Resistance

Metal housing rugged components provides high shock resistance up to 750 g/ms on larger calibers up to .375 H&H, 12-gauge and 9.3x64.

04. IP67 Waterproof Rated

IP67 rated design creates protection from the rain, snow, even when it drops into 1 meter of the water up to 30 minutes.

05. Replaceable and Rechargeable Battery

Two batteries and HIKMICRO external battery charger are included in the package box, which give the freedom to observe as long as needed even a full day.



	PH35L	PH50L	PQ35L	PQ50L
Image Sensor	384×288, 12 μm		640×512, 12 μm	
Frame Rate	50Hz		50Hz	
Lens	35 mm, F1.0	50 mm, F1.0	35 mm, F1.0	50 mm, F1.0
Magnification	3.1 - 24.8, 8x	4.4 - 35.2, 8x	1.9 - 15.2, 8x	2.6x - 20.8, 8x
FOV	7.6° x 5.7°	5.3° x 4.0°	12.5° x 10.1°	8.8° x 7.1°
Eye relief	45 mm		45 mm	
Display	0.39-inch, OLED, 1024 × 768		0.39-inch, OLED, 1024 × 768	
Detection Range	1800 m	2600 m	1800 m	2600 m
Laser range finder	Wavelength: 905 nm, Measurement range: up to 600 m, Accuracy: ±1 m			
Operating Time	6 h		6 h	
Weight	518g	585g	518g	585g
Operating Temp.	-30°C to 55°C (-22°F to 131°F)		-30°C to 55°C (-22°F to 131°F)	



Clip-On

THUNDER & THUNDER Pro

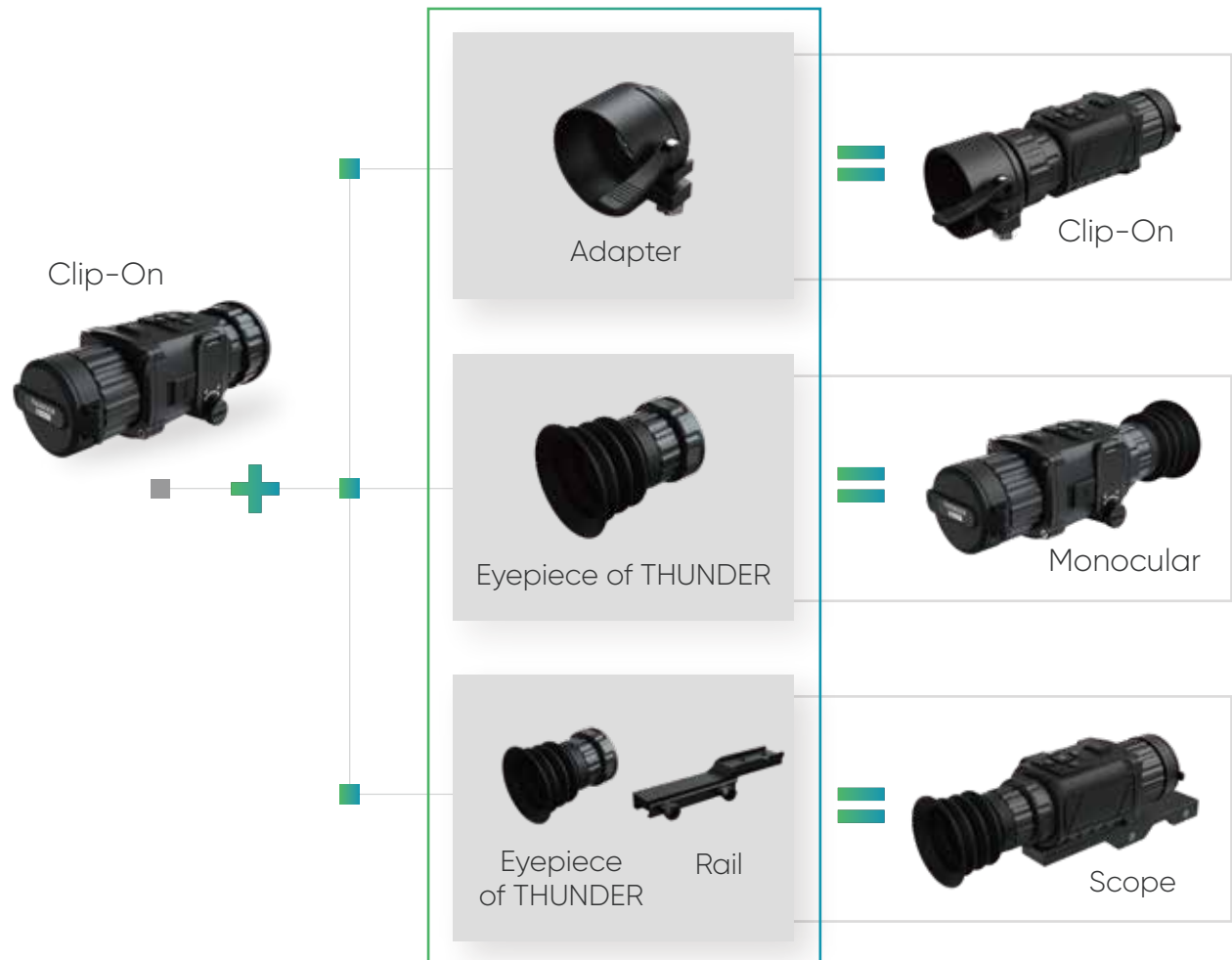


17 μ m
THUNDER

12 μ m
THUNDER Pro

Multi-use Flexible Transformation

Replaceable eyepiece provides an easy and quick way to transform the clip-on to the monocular or scope.



Optional Accessories

High Image Quality & Accurate Target Recognition

The powerful VOx 12 μ m imaging sensor with NETD<35mK and large aperture F1.0 lens ensure the perfect distinction of the target and present clear and detailed pictures even in complete darkness.

50 fps full frame delivers smooth video of dynamic scenes.



Outstanding Image Algorithm

Self-developed image algorithm optimizes image quality, bringing users a high-definition and cleaner picture, highlighting the edge of the object.

Central Display Menu

After being assembled with the day scope, the content of the menu will not be obstructed, providing a user-friendly operate experience of menu selection.



Ultra Long Detection Range

With the advanced imaging sensor and large-focus objective lens, THUNDER Pro series provides incredible detection capabilities, and can detect a 1.7m target at a distance up to **2600m**.

Reliability and Stability

The main body of the machine is made of high-strength plastic. The internal components are designed with precise reinforced articulation.

01. IP67 Waterproof Rated

IP67 rated design creates protection from the rain, snow, even when it drops into 1 meter of the water up to 30 minutes.

02. High Shock Resistance

Metal housing rugged components provides high shock resistance up to 750 g/ms on larger calibers up to .375 H&H, 12-gauge and 9.3x64.

	THUNDER	THUNDER Pro	
	TH35C	TE19C	TQ50C
Image Sensor	384×288, 17 μm	256×192, 12 μm	640×512, 12 μm
Frame Rate	50Hz	25Hz	50Hz
Lens	35 mm / F1.0	19 mm / F1.0	50 mm / F1.0
Magnification	1x	1x	1x
FoV	10.0°×8.0°	9.2°×6.9°	8.7°×7.0°
Display	0.39-inch, OLED, 1024 × 768		
Detection Range	1300 m	1000 m	2600 m
Operating Time	4.5 h	5 h	3.6 h
Weight	420g	415g	492g
Operating Temp.	20°C to 55°C (-4°F to 131°F)		20°C to 55°C (-4°F to 131°F)

BINOCULAR

TS16 & TS36



Bi-Spectrum Image Fusion

The bi-spectrum image fusion function merges thermal image and optical image to highlight target and delivers the high definition image with precise.



Precise Positioning—TS36

Get the distance, azimuth and coordinates of the object through **DMC & LRF**.





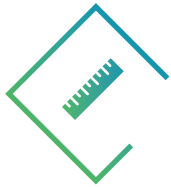
GPS

Build-in GPS shows the altitude, longitude and latitude. Users can always easily see GPS coordinates of their location as well as their target's.



Easy-to-Read OLED Display

High resolution 0.39" 1024x768 OLED is capable of lower power consumption, wider viewing angle, and richer color, providing better observation details.



Up to 3000m Detection Range

TS36 series provides incredible detection capabilities, and can detect a 1.7m object at a distance up to 3000m.



TS16	DS-2TS16-35VI/W	DS-2TS16-50VI/W
Sensor	640×512, 17 μm, NETD < 40mK	
Focal Length	35 mm, F1.0	50 mm, F1.0
Field of View	17.7°×14.2°	12.42°×9.95°
Visible Camera	1280 × 960	
Micro Display	0.39-inch, OLED, 1024×768	
Detection Range	1100 m	1500 m
Internal Memory	32GB (900,000 Images)	
Operating Time	7 h	
IP Rating	IP67	

TS36	DS-2TS36-50VI/W	DS-2TS36-75VI/W	DS-2TS36-100VI/W	DS-2TS36-50VI/WL	DS-2TS36-75VI/WL	DS-2TS36-100VI/WL
Sensor	640×512, 17 μm, NETD < 40mK			640×512, 17 μm, NETD < 40mK		
Focal Length	50 mm, F1.0	75 mm, F1.2	100 mm, F1.4	50 mm, F1.0	75 mm, F1.2	100 mm, F1.4
Field of View	12.4°×9.9° 8.3°×6.6° 6.2°×4.9°			12.4°×9.9° 8.3°×6.6° 6.2°×4.9°		
Visible Camera	1920×1080			1920×1080		
Laser Range Finder	N/A			Wavelength: 1550 nm, Measurement range: up to 3 km, Accuracy: 0.75 m		
Micro Display	0.39-inch, 1024 × 768 OLED			0.39-inch, 1024 × 768 OLED		
Detection Range	1500 m	2200 m	3000 m	1500 m	2200 m	3000 m
Internal Memory	32GB (900,000 Images)			32GB (900,000 Images)		
Operating Time	7 h			7 h		
IP Rating	IP67			IP67		

ACCESSORIES

Apply to

**GRYPHON
GRYPHON LRF**

HIKMICRO
Fill Light/Bracket



Apply to

**THUNDER
THUNDER Pro**

HIKMICRO
THUNDER Series
Eyepiece

HM-THUNDER-E



HIKMICRO Adapter

HM-THUNDER-38A
HM-THUNDER-40A
HM-THUNDER-50A
HM-THUNDER-60A
HM-THUNDER-62A



Apply to

**THUNDER
THUNDER Pro
PANTHER LRF**

HIKMICRO
Quick-release Rail
HM-RAIL-QR01



HIKMICRO Rail
HM-THUNDER-R



Apply to

**GRYPHON
GRYPHON LRF
PANTHER LRF**

HIKMICRO
Batteries Charger
HM-5202AZC



HIKMICRO Battery
HM-3633DC




See the World in a New Way

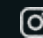
HIKMICRO OUTDOOR PRODUCTS





© Hangzhou HIKMICRO Sensing Technology Co., Ltd.
Building A1, No. 299, Qiushi Road, Tonglu Economic Development Zone,
Tonglu County, Hangzhou, Zhejiang


 HIKMICRO Outdoor

 HIKMICRO

 hikmicro_outdoor

 info@hikmicrotech.com

 HIKMICRO Outdoor

 <http://hikmicrotech.com/en>