



案内の例文

Start at the \_\_\_\_\_ . Turn \_\_\_\_\_ .  
(スタートの場所) (右・左)

{ Go straight. Turn \_\_\_\_\_ at the corner.  
(右・左)

{ Go straight to the corner.

Go straight (for) \_\_\_\_\_ blocks.  
(番号)

Turn \_\_\_\_\_ .  
(右・左)

{ Go straight. It's on your \_\_\_\_\_ .  
(右・左)

{ Go straight. You can see it on your \_\_\_\_\_ .  
(右・左)



# Group A

道案内の問題

Question #1: department store (L) ➡ elementary school (I)

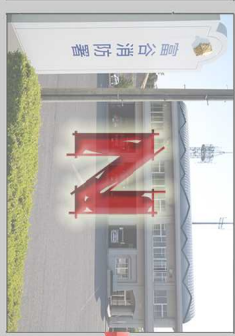
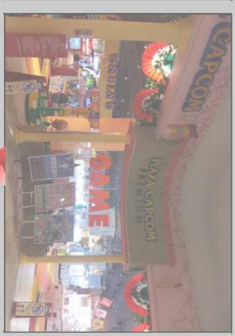
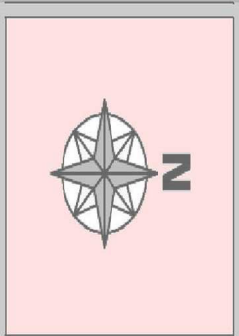
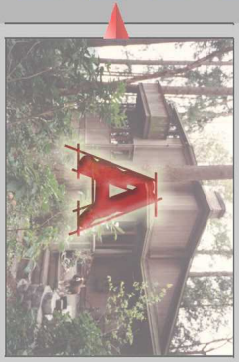
Question #2: flower shop (M) ➡ book store (H)

Question #3: gas station (Q) ➡ station (F)

Question #4:

Name: \_\_\_\_\_ Class: \_\_\_\_\_ Num: \_\_\_\_\_





Group Bの案内を聞いて、着いたところの文字を書く。

Question #1: \_\_\_\_\_

Question #2: \_\_\_\_\_

Question #3: \_\_\_\_\_

Question #4: \_\_\_\_\_





案内の例文

Start at the \_\_\_\_\_ . Turn \_\_\_\_\_ .  
(スタートの場所) (右・左)

Go straight. Turn \_\_\_\_\_ at the corner.  
(右・左)

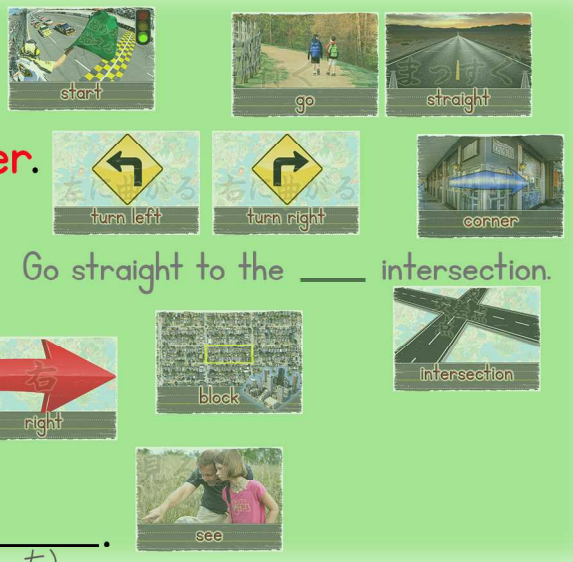
Go straight to the corner.

Go straight (for) \_\_\_\_\_ blocks.  
(番号)

Turn \_\_\_\_\_ .  
(右・左)

Go straight. It's on your \_\_\_\_\_ .  
(右・左)

Go straight. You can see it on your \_\_\_\_\_ .  
(右・左)



# Group B

道案内の問題

Question #1: junior high school (C) ➡ hospital (J)

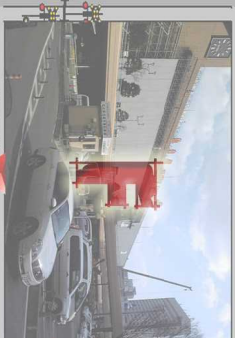
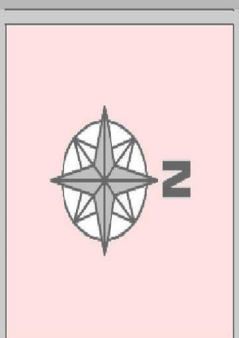
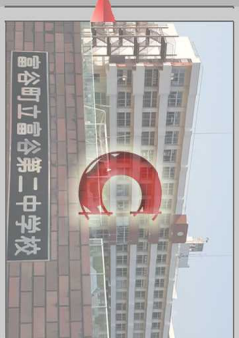
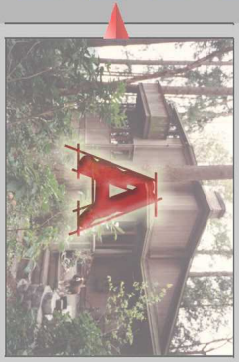
Question #2: station (F) ➡ post office (D)

Question #3: fire station (N) ➡ park (B)

Question #4:

Name: \_\_\_\_\_ Class: \_\_\_\_\_ Num: \_\_\_\_\_





Group Aの案内を聞いて、着いたところの文字を書く。

Question #1: \_\_\_\_\_

Question #2: \_\_\_\_\_

Question #3: \_\_\_\_\_

Question #4: \_\_\_\_\_





案内の例文

Start at the \_\_\_\_\_ . Turn \_\_\_\_\_ .

{ Go straight. Turn \_\_\_\_\_ at the corner.

{ Go straight to the corner.

Go straight (for) \_\_\_\_\_ blocks.

Turn \_\_\_\_\_ .

{ Go straight. It's on your \_\_\_\_\_ .

{ Go straight. You can see it on your \_\_\_\_\_ .



Go straight to the \_\_\_\_\_ intersection.



# Group A

道案内の問題

Question #1: department store (L) ➡ elementary school (I)

Question #2: flower shop (M) ➡ book store (H)

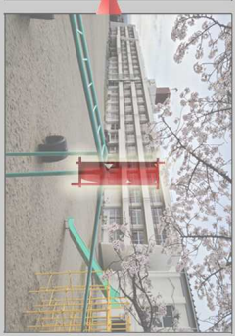
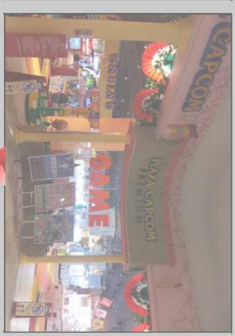
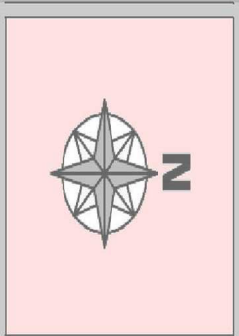
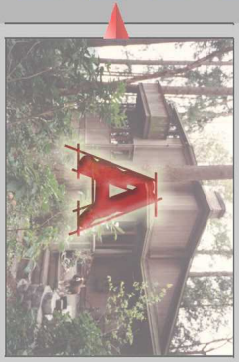
Question #3: gas station (Q) ➡ station (F)

Question #4:

Name: \_\_\_\_\_

Class: \_\_\_\_\_ Num: \_\_\_\_\_





Group Bの案内を聞いて、着いたところの文字を書く。

Question #1: \_\_\_\_\_

Question #2: \_\_\_\_\_

Question #3: \_\_\_\_\_

Question #4: \_\_\_\_\_





案内の例文

Start at the \_\_\_\_\_ . Turn \_\_\_\_\_ .  
(スタートの場所) (右・左)

Go straight. Turn \_\_\_\_\_ at the corner.  
(右・左)

Go straight to the corner.

Go straight (for) \_\_\_\_\_ blocks.  
(番号)

Turn \_\_\_\_\_ .  
(右・左)

Go straight. It's on your \_\_\_\_\_ .  
(右・左)

Go straight. You can see it on your \_\_\_\_\_ .  
(右・左)



Go straight to the \_\_\_\_\_ intersection.



# Group B

## 道案内の問題

Question #1: junior high school (C) ➡ hospital (J)

Question #2: station (F) ➡ post office (D)

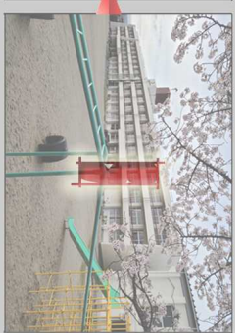
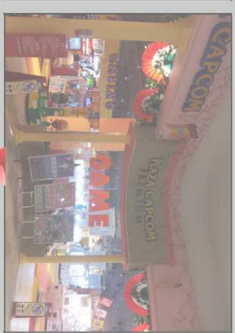
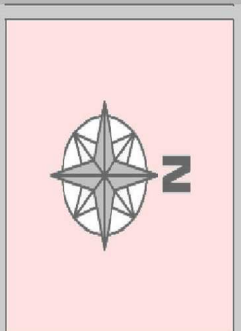
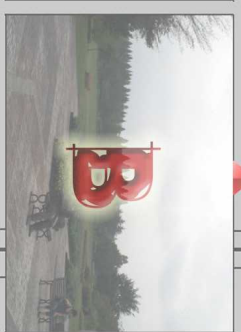
Question #3: fire station (N) ➡ park (B)

Question #4:

Name: \_\_\_\_\_

Class: \_\_\_\_\_ Num: \_\_\_\_\_





Group Aの案内を聞いて、着いたところの文字を書く。

Question #1: \_\_\_\_\_

Question #2: \_\_\_\_\_

Question #3: \_\_\_\_\_

Question #4: \_\_\_\_\_





案内の例文

Start at the \_\_\_\_\_ . Turn \_\_\_\_\_ .



{ Go straight. Turn \_\_\_\_\_ at the corner.



{ Go straight to the corner.

Go straight to the \_\_\_\_\_ intersection.

Go straight (for) \_\_\_\_\_ blocks.

Turn \_\_\_\_\_ .



{ Go straight. It's on your \_\_\_\_\_ .

{ Go straight. You can see it on your \_\_\_\_\_ .



# Group A

道案内の問題

Question #1: department store (L) ➡ elementary school (I)

Question #2: flower shop (M) ➡ book store (H)

Question #3: gas station (Q) ➡ station (F)

Question #4:

Name: \_\_\_\_\_ Class: \_\_\_\_\_ Num: \_\_\_\_\_





Group Bの案内を聞いて、着いたところの文字を書く。

Question #1: \_\_\_\_\_

Question #2: \_\_\_\_\_

Question #3: \_\_\_\_\_

Question #4: \_\_\_\_\_





案内の例文

Start at the \_\_\_\_\_ . Turn \_\_\_\_\_ .  
(スタートの場所) (右・左)

{ Go straight. Turn \_\_\_\_\_ at the corner.  
(右・左)

{ Go straight to the corner.

Go straight (for) \_\_\_\_\_ blocks.  
(番号)

Turn \_\_\_\_\_ .  
(右・左)

{ Go straight. It's on your \_\_\_\_\_ .  
(右・左)

{ Go straight. You can see it on your \_\_\_\_\_ .  
(右・左)



Go straight to the \_\_\_\_\_ intersection.



# Group B

道案内の問題

Question #1: junior high school (C) ➡ hospital (J)

Question #2: station (F) ➡ post office (D)

Question #3: fire station (N) ➡ park (B)

Question #4:

Name: \_\_\_\_\_ Class: \_\_\_\_\_ Num: \_\_\_\_\_





Group Aの案内を聞いて、着いたところの文字を書く。

Question #1: \_\_\_\_\_

Question #2: \_\_\_\_\_

Question #3: \_\_\_\_\_

Question #4: \_\_\_\_\_