



**STRATFORD
CONNECTICUT**

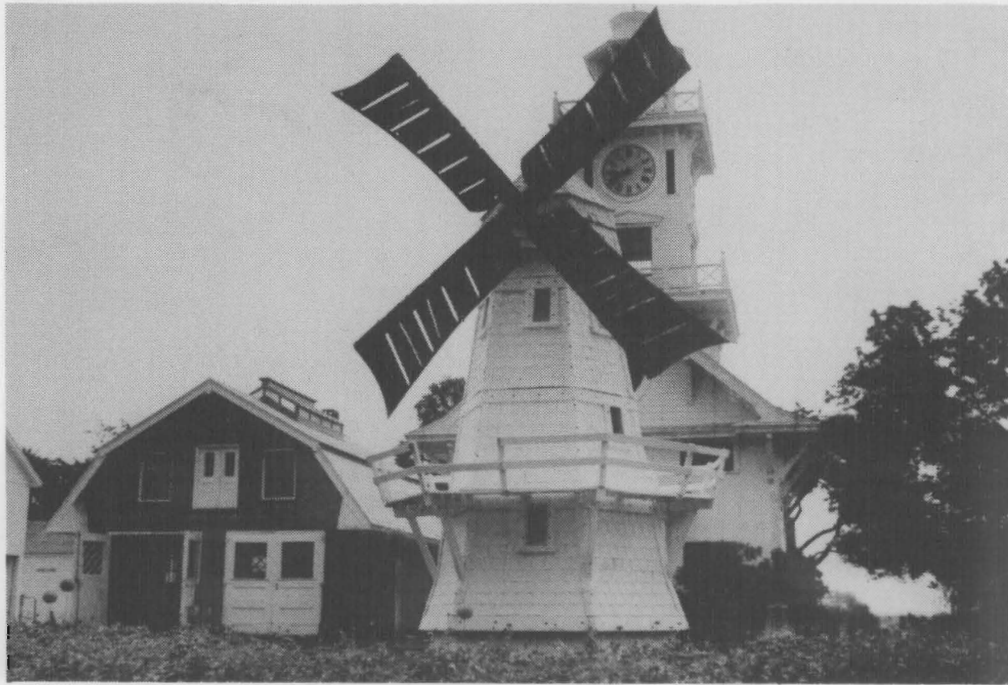
A Town for All Seasons



Peck's Mill Pond



Longbrook Park

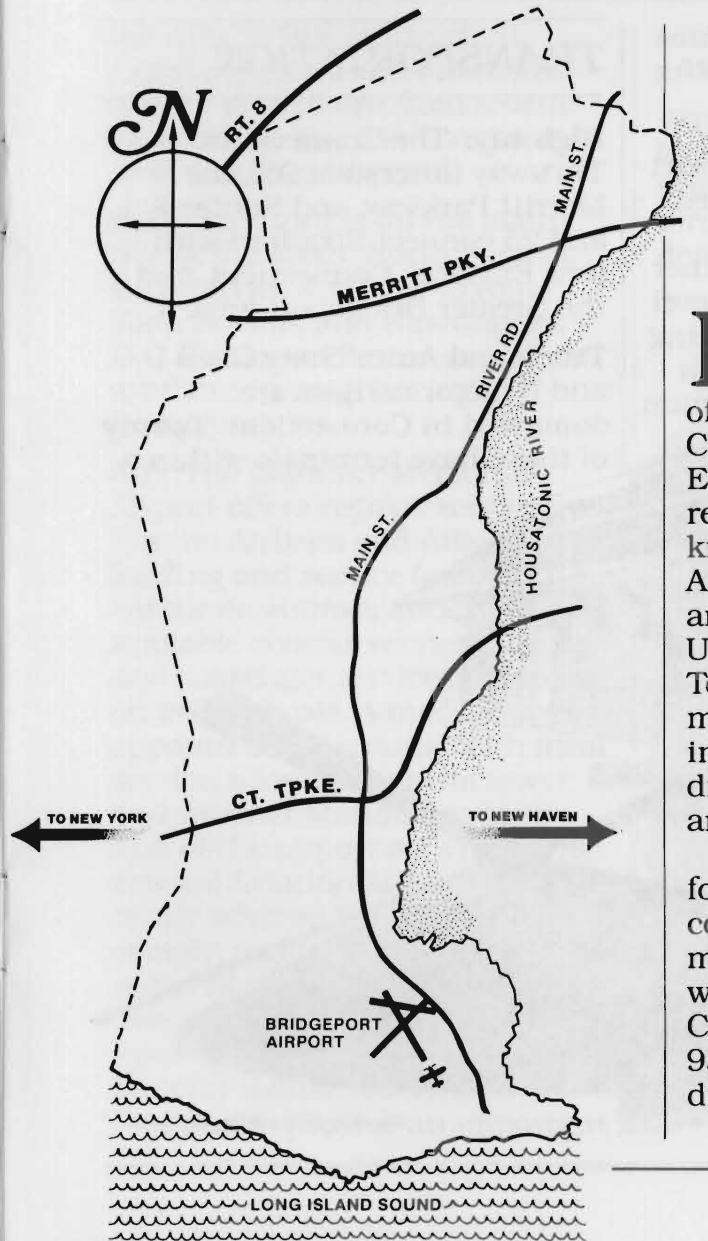


Boothe Memorial Park



Roosevelt Forest

A Town for All Seasons



Located on the eastern edge of Fairfield County, Stratford, Connecticut is a coastal New England community of 51,000 residents. Nationally it is best known as the home of the American Shakespeare Theatre and as the birthplace of the United States helicopter industry. Today Stratford is home to two major contributors to that industry: the Sikorsky Aircraft division of United Technologies and the Avco Lycoming Division.

Stratford has more land zoned for industry than any other community in the area. The vast majority of this land is located within a five minute drive of the Connecticut Thruway (Interstate 95). Much of the land also has direct railroad access.

The community's colonial



Judson House, built in 1760, is the home of the Stratford Historical Society.

history is traced to 1639, when a group of 25 families settled at Mac's Harbor along the banks of the Housatonic River. Since that time Stratford has grown to be a well-balanced community which combines lower, middle, and upper income housing with outstanding recreational and cultural facilities. In recent years its growth has been carefully controlled by a continuously updated Master Plan.

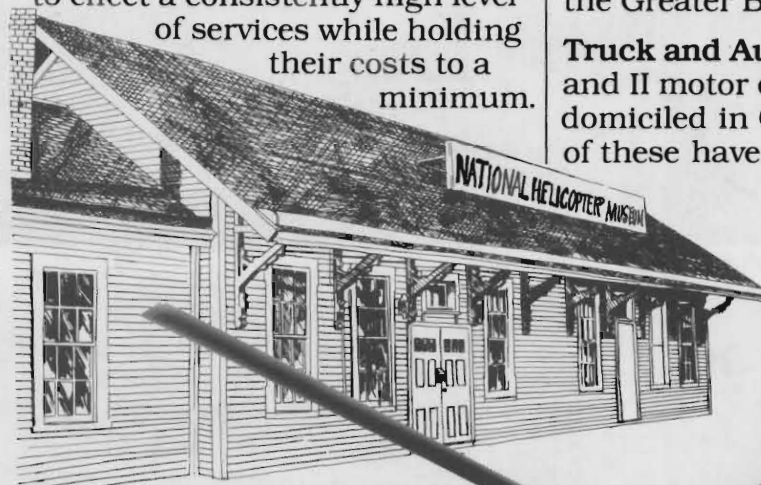
AVAILABLE LAND AND BUILDINGS

There are over 650 acres of prime vacant industrial and commercial property available in close proximity to highway, rail, and airport transportation. This figure represents more than a third of all the industrially zoned property in the six-town Greater Bridgeport region.

LOCAL TAXES

Consistently Stratford's relatively low taxes have reflected the long-term strength and stability of the community's industrial tax base. In a recent survey of the business community more than 70% of the respondents indicated they were pleased with the services provided by the Town. In the past decade Stratford's taxes have risen at a lower rate than inflation. In real terms property taxes have decreased by over 10% annually since 1970.

A League of Women's Voters survey rated the Town Manager system of government, as practiced in Stratford, as the most efficient form of government in the state. The Town Manager, Town Council, and business community have worked together to effect a consistently high level of services while holding their costs to a minimum.



The National Helicopter Museum is the country's only museum devoted exclusively to the history of the helicopter industry.



Sikorsky S-76 Helicopter

TRANSPORTATION

Highway: The Connecticut Thruway (Interstate 95), the Merritt Parkway, and Routes 8 and 25 connect Stratford with New England, Connecticut, and the Greater Bridgeport area.

Truck and Auto: Sixty Class I and II motor carriers are domiciled in Connecticut. Twenty of these have terminals within a

A Town for All Seasons

ten mile radius of Stratford. Regularly scheduled limousine service is available from several locations in Town to the three New York area airports.

Rail: Stratford is on the main line of the Metro North System with service available to New York, Boston, and Washington, D.C. Trailer-on flatcar service is available in neighboring Bridgeport.

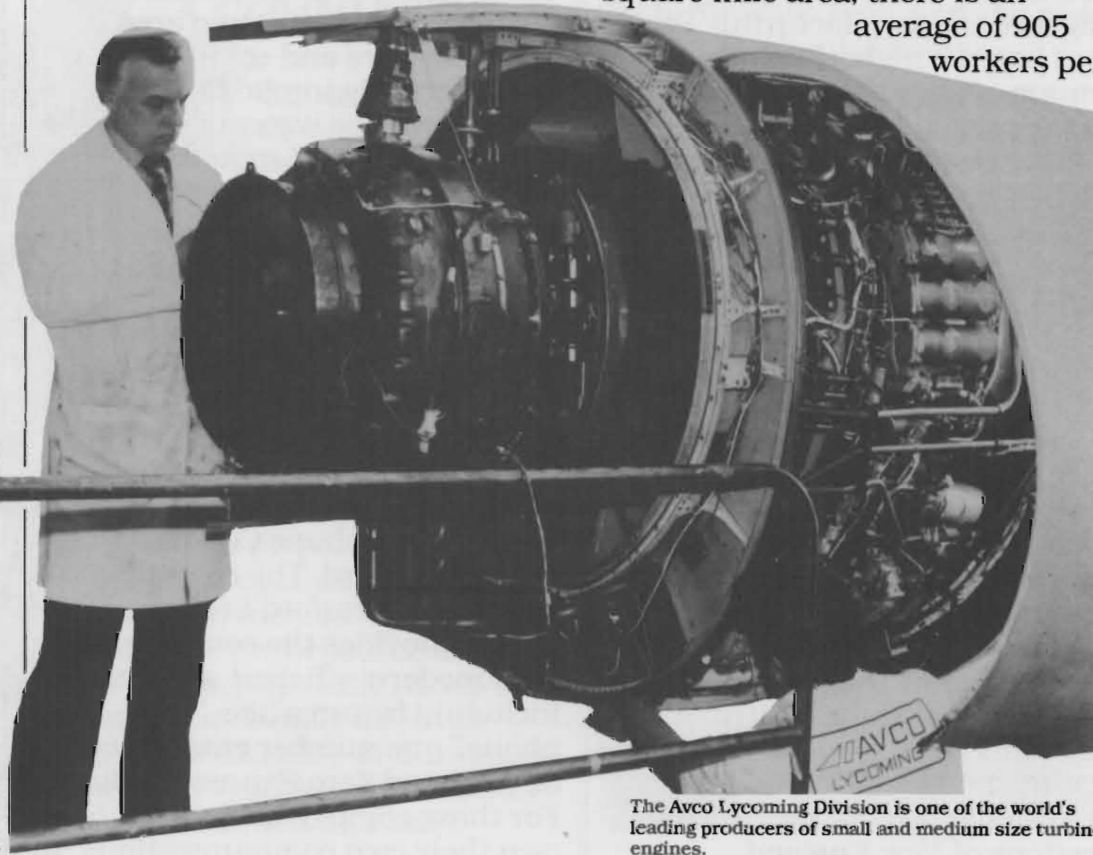
Air: The Sikorsky Memorial Airport offers regular service by Pilgrim Airlines and Atlantic Air, landing and service facilities for corporate aircraft, and readily available charter service. Cargo and passenger service operates on a daily basis. A modern, well-appointed air terminal with meal service, a lounge, control tower, and weather station serves as hub of the airport activities. The Federal Aviation Authority recently selected Stratford as one of eight regional centers for the national air control system. A new school for aircraft mechanics will train technicians for local industries. This is expected to provide an important

source of local training for the area's aerospace industry.

Water: A deep water harbor is located in nearby Bridgeport. It provides excellent docking and terminal facilities for either domestic or overseas shipping.

LABOR FORCE

The nine town Bridgeport Labor Market Area is the most concentrated pool of available workforce in Connecticut. Within the 200 square mile area, there is an average of 905 workers per



The Avco Lycoming Division is one of the world's leading producers of small and medium size turbine engines.

square mile. With a total of 180,000 people in the labor force, the Bridgeport Labor Market ranks third out of 17 markets in Connecticut. Stratford's 24,000 member labor force comprises one-eighth of the area total. With two-thirds of its labor force engaged in manufacturing, Stratford has the highest concentration of manufacturing workers in the area.

Projections show an increasing



growth in the professional, managerial, and service sectors of the local economy. Overall a 35% increase in the labor force and a 24% growth in overall population is projected by the year 2000. A recent study by the United States government singled out Fairfield County and the Greater Boston area as the two fastest growing sections of New England.

UTILITIES

Water: The Bridgeport Hydraulic Company provides an abundant supply of quality water daily for more than 80,000 industrial, commercial, and residential customers in a ten-town area. Ten reservoirs and seven well-fields serve Hydraulic Company customers. The water is soft, low in total solids and requires minimal chemical analyses.

Telephone: Southern New England Telephone Company serves Stratford. The recently completed Stratford Service Center provides the community with modern, efficient service including features like: "total-phone," one number emergency dialing, and Zero Express Dialing. For those companies desiring to own their own communications

systems there is a variety of private phone companies in the immediate area.

Gas: The Southern Connecticut Gas Company, the oldest public utility in the metropolitan area, supplies natural gas to 20 towns in the region. A liquified natural gas facility, located across the Housatonic River in Milford, permits the liquification of pipeline natural gas for storage in the summer months to be used later during the peak demand times of winter.

Electricity: The United Illuminating Company serves 17 communities in the Greater Stratford-Bridgeport area.

Four generating stations, two each in Bridgeport and New Haven, provide nearly 4.5 billion kilowatt hours. UI is connected with NEPOOL, a regional planning and coordinating agency designed to achieve maximum electric power and reliability for the region. NEPEX, a computerized control center located in West Springfield, Massachusetts, continuously monitors the region's power pool, selecting the

A Town for All Seasons



best possible combination of generation and transmission to meet total power demands.

STRATFORD AS A COMMUNITY

Education: Ten elementary schools, two intermediate schools, and two senior high schools present a balanced curriculum for the Town's primary and secondary students. There is a strong Catholic school network for those desiring a parochial education. The area also boasts many of the nation's finest private college preparatory schools. Special programs in the Stratford system include: speech therapy for pre-school children; help for the physically handicapped, the socially disadvantaged, the educable and trainable mentally retarded, the emotionally disturbed, and the

chronically homebound child.

Vocational education is available at local state vocational-technical schools offering full-time secondary level programs in more than 30 trades. Stratford is served by Bullard-Havens, Platt Tech, Norwalk Tech, and the new Airport Mechanics School.

Five area colleges offer a wide choice in undergraduate and graduate programs. Sacred Heart University is a commuting institution with special emphasis on job preparation for the busi-



ness world. Housatonic Community College prepares students for either further education or jobs in the business or scientific fields. The University of Bridgeport serves area corporations through excellence in its technical and engineering programs. Bridgeport Engineering Institute offers technical training. Fairfield University is an outstanding liberal arts institution.

Several commercial schools teach computer, mechanical, business and secretarial skills. The World of Computers provides operational training geared to

developing the skills a person needs to use computers in business applications. Connecticut Business Institute provides training programs in word processing, computer programming, and secretarial skills.

Recreation: The particular strength of Stratford's recreational facilities comes from its location on Long Island Sound. Three public beaches provide swimming and fishing opportunities. Five marinas, a fishing pier, and a public launching ramp cater to the boating enthusiast. The Housatonic Boat

Club, the second oldest boating club on Long Island Sound, specializes in sailing, while the Pootatuck Yacht Club caters to the power boat enthusiast.

Roosevelt Forest consists of 250 unspoiled acres, offering opportunities for camping, hiking, and picnicking. Stratford is one of the few communities in the entire nation to own its own forest.

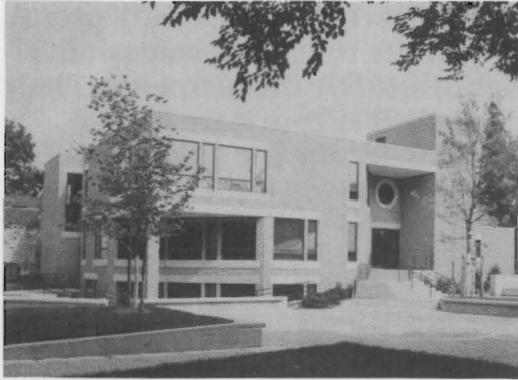
Boothe Memorial Park's scenic landscape and quaint, historic museums provide a casual, New England atmosphere. Many employee groups utilize Boothe Park's facilities for meetings and outings. It is an especially popular sledding spot during winter months.

There are two outstanding golf courses in Town: Oronoque, designed by Desmond Muirhead, and the championship course at Mill River Country Club.

Under the direction of the Stratford Recreation Department a year-round program for children and adults includes swimming, basketball leagues, hockey, badminton, soccer, tennis, volleyball, and nature study programs.



A Town for All Seasons



Stratford Library

The **Stratford YMCA** is a hub of family recreation and lesson programs throughout the year. Among those areas in which courses are regularly offered are: swimming and diving, acrobatics, martial arts, dancing, fitness, platform tennis, golf, and arts and crafts. The YMCA nursery school offers pre-school children the opportunity to broaden their experiences and encourages educational and social development. The nationally acclaimed **American Shakespeare Theatre** presents a season of classical plays each summer. During the fall and winter months, the Shakespeare hosts a variety of touring Broadway shows. The Theatre building has proven to

be a popular location for corporate meetings and social functions.

Sterling House Community Center serves as a focal point for educational and community activities for residents of all ages. Sterling House has developed a reputation for offering low cost, high-quality programs which attract sellout registrations. **Private racquetball and nautilus facilities** are available as many local companies take advantage of

corporate memberships to encourage physical fitness among their employees.

The **Raymond E. Baldwin Center** provides activities and services for the community's 6,000 senior citizens. Constructed with the assistance of a federal grant, the Center combines a wide variety of educational and recreational activities with health and social service programs.

The newly expanded and



American Shakespeare Theatre

renovated **Stratford Library** presented a unique architectural challenge. Two buildings—the original library and the American Legion Hall—were joined by the construction of a modern linkage building. The resulting structure, completed in 1982, blended these disparate parts into an efficient, functional and attractive building.

The new library serves the community through its collections of books, magazines, newspapers, art prints, recordings, feature films on videocassettes, and a collection of large print books. A computer system aids in day-to-day operation of the library as well as providing access to specialized materials to aid the business community.

Stratford Emergency Medical Service (EMS) is entirely funded and operated by the Town under the direction of a full-time paid EMS Coordinator. One hundred and eighty volunteers man the service on a 24 hour basis.

Ambulances are dispatched through the Stratford Emergency by dialing 911.

Stratford is served by four outstanding hospitals: Bridgeport, St. Vincent's, Park City and Milford. One of the worlds top medical research facilities, Yale-New Haven Hospital, is within twenty minutes.

The Town is particularly proud of both its fulltime, professional police and fire departments. Their combined efforts have been responsible for the community's excellent rating with insurance companies.



Stratford's location on Long Island Sound has been utilized to give the community some of the best recreational facilities in New England.



A Town for All Seasons

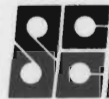
Contributors List:

American Shakespeare Theatre
Antinozzi Associates
Avco-Lycoming Division
BancOne of Connecticut
Barnum Shoe Tree, Inc.
Blake Travel
Boehmke & Dobosz, Inc.
Brew Printing Company
Caselli Real Estate
Century 21-Stewart Realty
Chris Bargas, Inc.
Citytrust
Connecticut Bank & Trust Co.
Connecticut Distributors
Connecticut National Bank
Convention & Group Travel
Assoc. Ltd.
CoryType & Design
David J. Martin Realty
DiScala Fairfield Co.
Dock Incorporated
Dorris Buecher Real Estate
Dresser Industries

Eagle Agency, Inc.
Ellsworth Industrial Supply Co.
Ernie Hodson Real Estate
Fairfield County Real Estate
Fairfield County Newspaper
Recycling Center
Food Automation-Service
Techniques, Inc.
Hatfield Insurance Agency, Inc.
Howard Johnson's Motor Lodge
Liedle's
M & M Building Assoc. Inc.
Michael Angelo Agency
Mechanics & Farmers
Savings Bank
North American Bank &
Trust Company
Orloff Real Estate
Oronoque Realty-Div. of
Universal Realty Corp.
Owen Real Estate
People's Savings Bank
Progressive Die Company

R. A. Lalli Company
Raymark Corporation
Richard D. Reynolds, Realtors
Scott, Inc.
Shell Station Restaurant
Sikorsky Aircraft
Stewart Y. Knowles, Realtor
Stratford Club
Stratford Education Association
Stratford Inn
Stratford Land & Improvement
Company, Inc.
Stratford Visiting Nurse
Association, Inc.
Stratmar Fulfillment Corp.
Synthetic Products Company
Synpro-Ware Dispersions
T.O.G. Travel, Inc.
The William T. Beazley Company
Town Fair Tire Center, Inc.
Warner's Div. of Warnaco
Wilcar Products, Inc.
William B. Meyer, Inc.

Stratford Economic Development Agency
and



Stratford Chamber of Commerce

CONCEPT & TYPOGRAPHY: CORYTYPE & DESIGN, STRATFORD
PRINTING: BREW PRINTING CO., STRATFORD
PHOTOGRAPHY: ROSALIE BARES/STEPHANIE GAY