

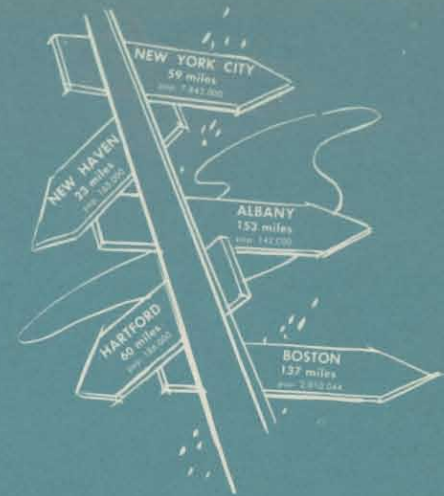
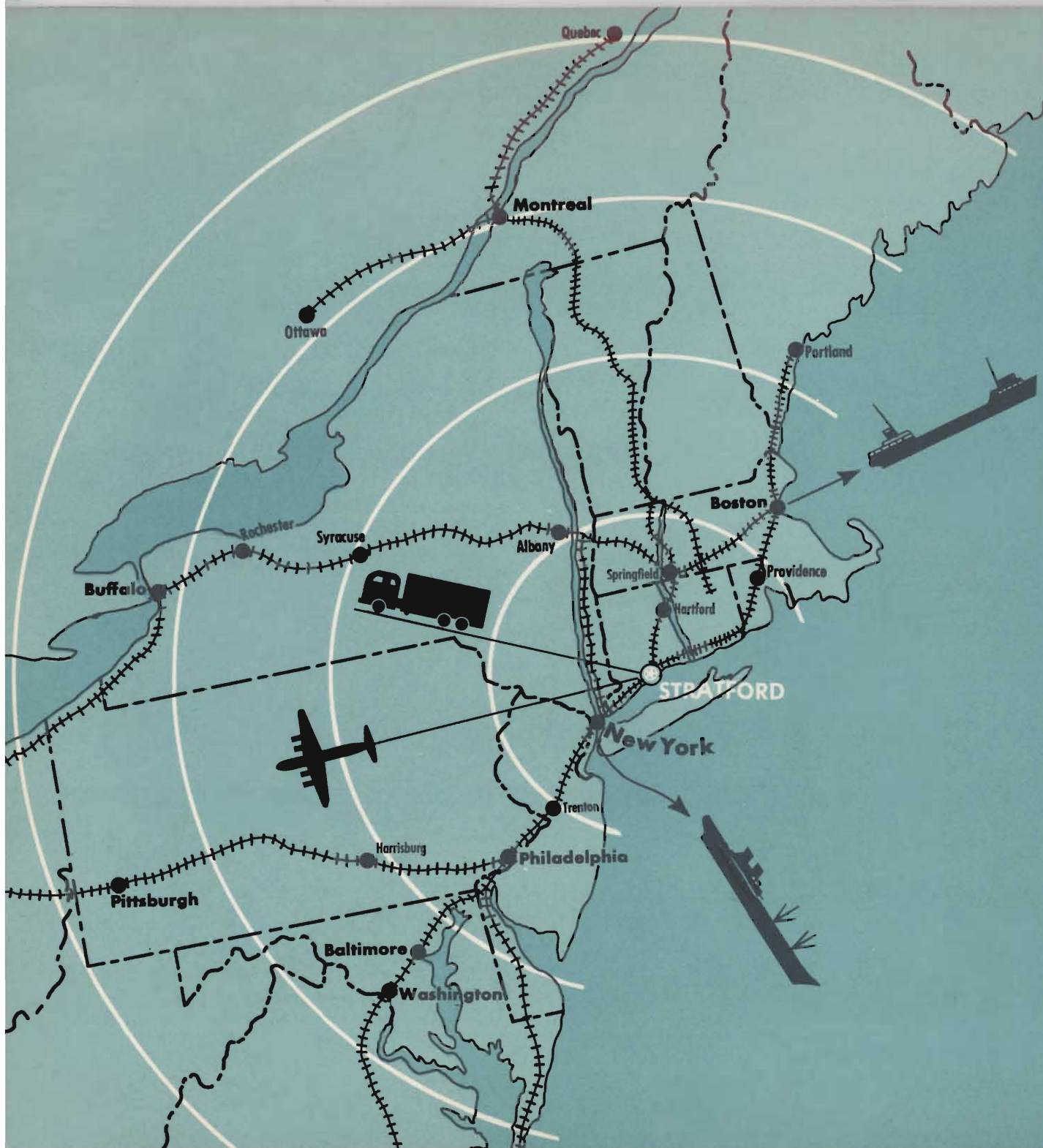
INDUSTRIAL DEVELOPMENT BROCHURE

Presenting **STRATFORD** Connecticut



Town Hall

An ideal site for industry . . . a fine town in which to live



About Connecticut . . .

- Ranks first in percentage of skilled workers to total workers
- Ranks first in per capita military prime contracts awarded
- Ranks first in percentage of manufacturing employees to total nonagricultural employees
- 37% of the U.S. effective buying income located within a 500 mile radius
- About 60 million people (1/4 total U.S. population) lives within 500 mile radius
- Within a 500 mile radius, these wealthy markets are located: Montreal, Ottawa, Toronto, Boston, New York, Cleveland, Philadelphia, Baltimore, Norfolk, Raleigh
- Excellent transportation facilities
 - 700 trucking concerns
 - A larger proportion of paved or hard-surfaced roads than in any other state
 - 750 miles of New York, New Haven and Hartford Railroad track
 - Stratford Airport, Bradley Field and two other airports
 - Busy harbors and deep-water ports for national and international shipping . . . including New Haven and Bridgeport
 - Located between major ports of Boston and New York City



View of available Stratford industrial sites adjacent to the Connecticut Thruway. The property lies some two minutes driving time from the Thruway.

Judson House — Built in 1723, this fine old Colonial homestead is the headquarters and major museum of The Stratford Historical Society.



Introduction

The Town of Stratford was founded in 1639 by some twenty-five families who had migrated to the New World from England. The wilderness which the ambitious colonists settled had originally belonged to the Pequonock Indians.

The town prospered and grew. At the start of the American Revolution it was the largest settlement in Fairfield County with a population of 5,500.

During the late 18th and early 19th centuries, much of the territory of the town was carved from its original boundaries and divided into Huntington, Trumbull, Shelton, Monroe and much of Bridgeport. But despite these sporadic partitions, Stratford still remains of considerable size, embracing in all 12,331 acres.

In May 1882, the first telephone made its appearance in Stratford. Water and gas came in 1905. Electricity for home use followed in 1908 and, in 1910, electric street lighting was introduced.

1910 was a milestone year for Stratford — major industry came in for the first time in the person of the Baird Machine Company. Subsequent changes in the town are reflected in the next thirteen pages.



Location:

Stratford is located in Fairfield County on the Connecticut Turnpike, U.S. 1 and the Merritt Parkway, 3 miles east of Bridgeport. It is bordered on the east by Milford and the Housatonic River, on the south by Long Island Sound, on the west by Bridgeport and Trumbull, and on the north by Shelton.

Area:

19.5 Square Miles

Altitude and Topography:

The altitude varies from tide level to 280 feet above sea level in the northern part of the town. The topography ranges from a marshy coastal plain to hilly and rolling land in the north and northwest. Principal topographic features are the estuary of the Housatonic River and the Great Meadows area adjacent to Long Island sound.

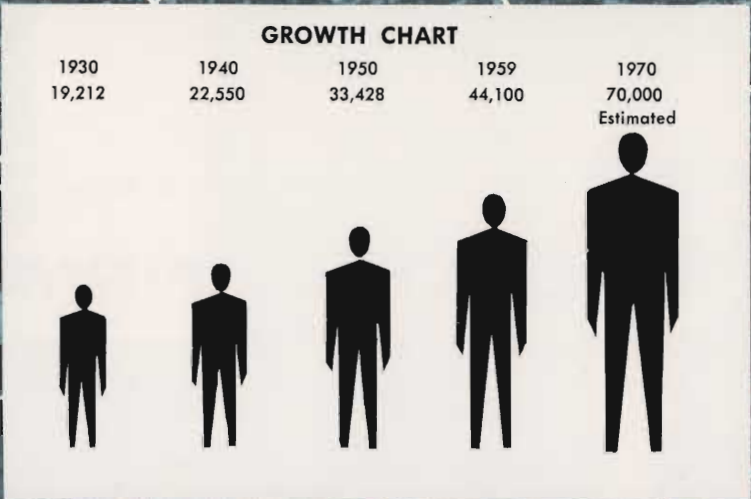
CLIMATE

Month	Temperature 1922-58			Rainfall	Snow & Sleet
	Record Mean Temp.	Max.	Min.	1906-58 Record Mean (inches)	1899-1958 Mean Total (inches)
Jan.	28.2	34.5	21.9	3.78	9.0
Feb.	30.5	38.9	22.1	3.39	10.9
March	37.8	46.8	28.8	4.04	6.0
April	47.9	58.0	37.7	3.94	1.1
May	58.4	69.1	47.7	3.75	0.0
June	67.9	78.3	57.4	3.31	0.0
July	73.2	83.3	63.1	3.64	0.0
Aug.	71.5	81.4	61.5	4.41	0.0
Sept.	64.8	74.7	54.8	3.62	0.0
Oct.	54.3	64.6	44.0	3.52	T
Nov.	43.5	52.3	34.6	3.81	1.6
Dec.	32.7	40.6	24.8	3.68	6.8



Strategically located for

STRATFORD



Population:

According to the United States Bureau of the Census, Stratford had a population of 33,428 in 1950. Today, it has about 44,200 residents . . . an increase of almost 10,000 people. Since 1930, Stratford's population has risen over 100%.

Age Characteristics

(1950 Census Figures)

21 and over	22,443
65 and over	2,456
21-64	19,987
15-20	2,403
21-24	1,702
25-34	5,544
35-44	5,535
45-54	3,917
55-64	3,142

Almost 40% of Stratford's population is between the ages of 15 and 44.

industry with a growing labor force



American Standard, Detroit Controls Div.



Manning, Maxwell & Moore

THESE LEADING INDUSTRIAL FIRMS FIND STRAT



The Baird Machine Company

Stratford is one of a seven-town region defined as the Bridgeport Labor Market Area. Within this area live 320,200 people.

Labor-management relationships in the Bridgeport Labor Market Area are enviable as evidenced by the low ratio of time lost from labor disputes. And Stratford plants have a better over-all strike-free record than the area as a whole.

The community attitude toward industry is very friendly both officially and in daily person-to-person relationships. In April, 1959, the town organized a Stratford Industrial Development Commission which, together with the Chamber of Commerce and Office of the Town Manager, is actively promoting industrial expansion into Stratford. A complete file on available plant sites is maintained and the Development Commission is in a position to bring interested parties together for the purpose of negotiating favorable sale and lease agreements.

On the following pages, the community services and area facilities which make Stratford such an ideal industrial location are briefly described.



Raybestos Manhattan, Inc.



United Aircraft Corp., Sikorsky Div.

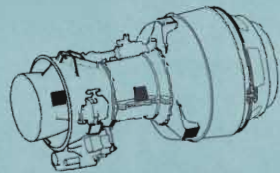


helicopters



gauges

STRAFORD IDEAL!



turbines



Avco Mfg. Co., Bridgeport Lycoming Div.



Tilo Roofing Co., Inc.

INDUSTRIES IN STRATFORD

(together, these plants employ about 11,000 individuals)

- AIRCRAFT ACCESSORIES CO. Electrical Products
- AMERICAN SPECIALTY CO. Hardware
- ASCO WIRE AND CABLE CO. Insulated Wire and Cable
- ASHOR IRONCRAFT CO. Ornamental Metal Work
- AUTH, M. A., INC. Wiring Devices
- AVCO MANUFACTURING CO. Aircraft Engines
- BAIRD MACHINE COMPANY Machine Tools
- BARNUM FORGE COMPANY Iron and Steel Forgings
- BEDELL'S SHIPYARD, INC. Boat Building
- BICKLEY ENGINEERING CORP. Fountain Pens
- BORDEN OIL BURNERS CO., INC. Heating Engineers
- BOWE BROS. Edge Tools
- BREW PRINTING CO. Printing
- BRIDGEPORT BURIAL VAULT COMPANY Concrete Products
- BRIDGEPORT ENAMELED WIRE CO., INC. Insulated Wire and Cable
- BRIDGEPORT GRINDING CO. Polishing
- BRIDGEPORT ROLLING MILLS Foundry
- BROWN, A. J. BOAT WORKS Boat Building
- CANFIELD SCREW MACHINE CO. Screw Machine Products
- CHEMICAL PLATING COMPANY Electroplating
- CITY PLATING WORKS, INC. Plating
- CONTRACT MANUFACTURING CO. Primary Metal Industries
- CONTRACT PLATING COMPANY Plating
- CURCIO, RAYMOND A. Hand Tools
- CUTRUFELLO'S CREAMERY, INC. Natural Cheese
- CUTTING TOOLS, INC. Machine Tool Accessories
- DETROIT CONT. DIV., AMER. STAND. Plumbing and Heating Equip.
- DUCTILE IRON FOUNDRY, INC. Foundry
- ELECTRIC HEATER COMPANY Electrical Appliances
- EMPIRE SILVER CO. Power Metallurgy
- F. & H. COMPANY Cabinets
- FERRIS MANUFACTURING COMPANY Metal Office Furniture
- FLADD & KAHLE'S MARINA Boat Building

- FLEET TOOL COMPANY Machine Tool Accessories
- FRENCH BAKING COMPANY Bread and Other Bakery Products
- GARY TOOL COMPANY Machine Tool Accessories
- GAYNOR ELECTRIC CO., INC. Electrical Manufacturers
- HILL, JOHN Ornamental Iron Work
- HOLMERDEN COMPANY Chemicals and Disinfectants
- HORN MACHINERY COMPANY Machine Tools
- HOUSATONIC CORRUGATED BOX CO. Paperboard Boxes
- KEYES STAR PRESS, INC. Book and Commercial Printing
- KOVLAK TOOL & DIE WORKS Edge Tools
- LAMPARD, CHARLES A., COMPANY Primary Metal Industries
- LANG, THOMAS L. Wiring Devices
- MANNING, MAXWELL & MOORE Valves and Fittings
- MERIT PATTERN & MODEL COMPANY Conveyors
- MILLER MANUFACTURING COMPANY Sheet Metal Work
- MILLER'S STRATFORD PROVISION CO. Sausages
- MINIJET COSTUME JEWELRY Jewelry
- MORGAN-FRANCIS CO., INC. Fabricated Metal Products
- MORTIMORE MANUFACTURING CO. Hardware
- MORRISON TOOL PRODUCTS, INC. Machine Tools
- OHIO RUBBER CO. Rubber Products
- PAT-CAST COMPANY Models and Patterns
- PATTERSON STEEL FORGE COMPANY Iron and Steel
- PEASLEY PRODUCTS CORP. Aluminum Foundries
- PHOENIX, H. W. CO. Machine Shops
- PREFERRED PATTERN & MODEL CO. Models — Patterns
- RAYBESTOS MANHATTAN, INCORPORATED Brake Linings
- RADOR, INC. Signs and Advertising Displays
- RAYMOND, C. A. CO., INC. Machine Tools
- RICHARD ALLEN COMPANY Bolts, Nuts, Washers and Rivets
- ROBERTS ROUGE COMPANY Abrasive Products
- ROCKWELL TOOL CORPORATION Machine Tool Accessories
- R. O. D. TOOL COMPANY Machine Tools
- ROSS & ROBERTS COMPANY Machine Products
- SEYMOUR-SHERIDAN MANUFACTURING CO. Models and Patterns
- SHERMAN LAMINATION CO. Stamped and Pressed Machine Products
- SHERMAN METAL PRODUCTS Small Tools
- SLAVIS CUTTER WORKS Machine Tools
- SPECIALTY MFG. CO., INC. Hardware
- STEVENSON ENGINEERING, INC. Special Industry Machinery
- STONE BROTHERS WOODWORKING CO. Millwork Products
- STRATFORD AUTO SEAT COVER Fabricated Textile Products
- STRATFORD BOTTLING WORKS, INC. Bottled Soft Drinks
- STRATFORD MACHINE SHOP Machine Products
- STRATFORD MANUFACTURING COMPANY Machine Products
- STRATFORD MONUMENT WORKS Granite Works
- STRATFORD PRINTERS Printers
- TEK-BEARING CO., INC. Bearings
- THOMAS MANUFACTURING COMPANY Pens, Mechanical Pencils
- TILO ROOFING CO., INC. Roofing and Siding
- TURLITE, INC. Millwork Plants
- UNDERWOOD LABORATORIES, INC. Pharmaceutical Preparations
- UNITED AIRCRAFT CORP. SIKORSKY DIV. Aircraft
- W. W. SCREW MACHINE PRODUCTS Screw Machine Products
- WAGNER, PAUL Engraving on Metal
- WATERBURY PEN CO. Fountain Pens
- WILCAR PRODUCTS CO. Machinists
- ZELLE, J. A., INC. Machine Hardware
- ZIMMER MANUFACTURING COMPANY Machine Products

TRANSPORTATION FACILITIES ARE VERSATILE AND DEPENDABLE

Railroad

Stratford is situated on the main line of the New York, New Haven and Hartford Railroad between New York and Boston and provides excellent passenger and freight service directly or by connection with other railway systems.

Number of industrial sidings	8
Number of public team tracks	10
Daily scheduled local freight trains	1
Daily passenger trains to New York	8
Daily passenger trains from New York	7
Railway Express service from Bridgeport	
LCL service — railroad truck to and from Bridgeport	

Motor Truck Service

Twenty-two regular route common carrier truck operators serve Stratford. Truck transit time to New York City via the Connecticut Thruway requires 55 minutes.

There are four different Stratford exits and entrances on the Thruway.

Bus Service

Interstate Operators serving Stratford include Greyhound and Trailways. The town is also served by two local bus lines: Connecticut Rail & Lighting Co. and the Barnum and State Bus Line.

Highways

Connecticut Thruway } Through Stratford between Boston, Providence, New Haven, Bridgeport,
U.S. 1 } New York and the South.
U.S. 1A }

Merritt Parkway — Limited access toll road for passenger vehicles through Stratford between New York and the northeast.

Main Highways Conn. 110 — Stratford to Shelton
Conn. 113 — Local route serving shoreline areas between Bridgeport, Stratford and Nichols.

(Connecticut State Department of Aeronautics)



Air Transportation

Immediately adjacent to the Industrial Development Areas of Stratford is an expanding Municipal Airport providing utmost convenience for industrial freight and passenger service.

Airport facilities include three paved runways, lighting, navigational aids, complete servicing accommodations for both small and large business aircraft and a United States Weather Station.

Scheduled passenger, express and freight service by American Airlines and New York Airways helicopters are soon to be supplemented by the services of an additional carrier. The former runs two passenger and one cargo flights daily.

A very active charter or air taxi operation is also based at the airport.



THE STRATFORD TRUST COMPANY



CHECK THESE SERVICES

All of them ready to help your company settle in Stratford

Electrical Power

The United Illuminating Company provides electrical power for Stratford. Ample electrical capacities are readily available for commercial and industrial users. Additional information about voltages, characteristics and service in different areas within Stratford may be obtained from the United Illuminating Company, 1115 Broad Street, Bridgeport, Conn.

Gas

Natural gas at 1,000 BTU per cubic foot is supplied by the Bridgeport Gas Company at one of the lowest gas rates for industrial users in New England. An unlimited supply of natural gas in the Great Meadows Area (prime industrial property) is available at 15 psi. Rates for industrial and commercial users may be obtained from the Bridgeport Gas Company, 815 Main Street, Bridgeport, Conn.

Telephone

The Southern New England Telephone Company provides telephone service to the Bridgeport local calling area which also includes Stratford, Fairfield, Trumbull and Milford. Information on rates and arrangements is available from the Southern New England Telephone Company, 227 Church Street, New Haven 6, Conn.

Other Fuels

Industrial fuel oil, bituminous or anthracite coals are readily available in sufficient quantity for either heating or power.

Commercial Banks

The Stratford Trust Company
2366 Main Street, Stratford, Conn. (December 1, 1958)

Total Assets	\$11,946,248.61
Capital Stock	100,000.00
Surplus	600,000.00
Undivided Profits	672,609.02
Deposits	10,566,869.99

Savings Banks

The Bridgeport People's Savings Bank
Stratford Branch
2772 Main Street, Stratford, Conn.

The City Savings Bank
Stratford Branch
3621 Main Street, Stratford, Conn.

Note: The Connecticut National Bank and the Mechanics and Farmers Savings Bank are now building branches in Stratford.

Tax Data

Taxes are assessed in Stratford and the State of Connecticut with full cognizance of the primary need for maintaining a favorable business climate.

The Property Tax is the principal source of revenue for the towns. Real estate, but very little personal property of individuals, other than automobiles, is subject to this tax. Real estate, machinery, furniture and fixtures, and inventories are the principal taxable items of industrial and commercial taxpayers. In Stratford the rate is \$33.40 per \$1,000 of assessed valuation. The assessor's evaluation is based on 55% of the current market value.

The Connecticut Sales and Use Tax is a 3% tax imposed on all retailers based on gross receipts from the sale of taxable personal property.

The State Corporation Business Tax is levied on the franchise of

the corporation for the privilege of doing business in Connecticut. It is measured by the entire net income received by the corporation from business transacted within the State during the income year and is assessed at the rate of 3 3/4 %.

The Connecticut Unemployment Compensation Insurance Act contains a merit rating clause providing reduced rates ranging from 0.5% to 1.6% of taxable payrolls to eligible employers. The rate for new or non-eligible employers is 2.7% of taxable payrolls.

THERE IS NO STATE OR LOCAL INCOME TAX.

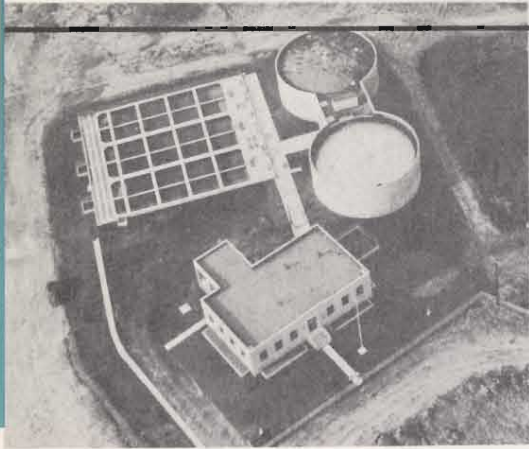
Full information relative to business and non-business taxes to be paid by a manufacturing company in Stratford is available upon request to the Stratford Industrial Development Commission or the Office of the Stratford Town Manager.



Responsible Government and Community Services

MAKE LIVING AND WORKING IN STRATFORD

PLEASANT, STIMULATING, SAFE

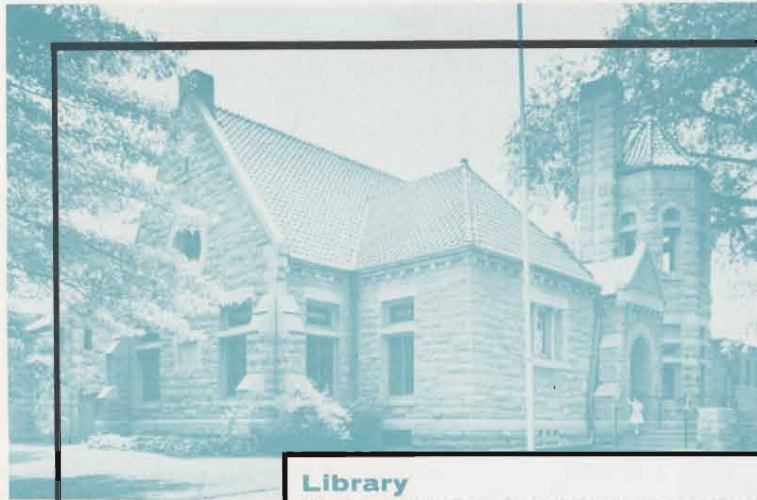
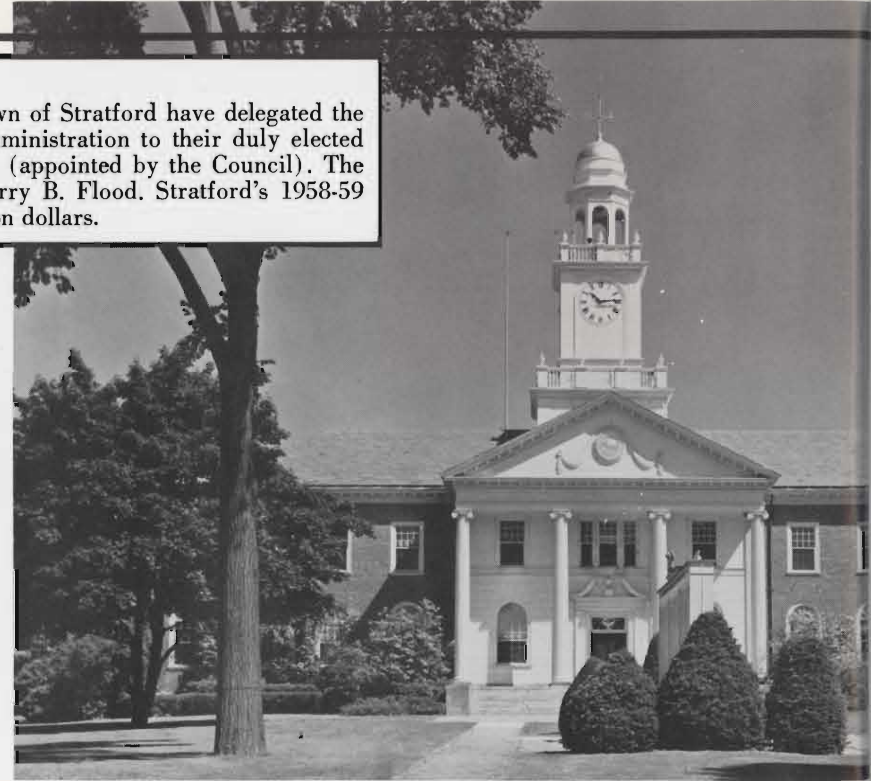


Sewer System

Sewage facilities include about 87 miles of mains, four sewage and two storm water pumping stations. Disposal is carried out according to a modern municipal sewage treatment plan under the supervision of the Connecticut State Department of Health.

Government

For 37 years, the voters of the Town of Stratford have delegated the functions of policy making and administration to their duly elected Town Council and Town Manager (appointed by the Council). The present Town Manager is Mr. Harry B. Flood. Stratford's 1958-59 operating budget is about six million dollars.



Library

The imposing Stratford Library was opened in 1894. Today it contains well over 60,000 volumes and is opened to the public 57½ hours a week. Of major interest to industry is the comprehensive technical book section. During the summer months, a children's reading program and story hour is conducted.



Post Office

The Stratford Post Office is a branch of the Bridgeport Post Office. Incoming and outgoing regular and air mail packets are collected six times daily.

Streets and Highways

The Town has about 120 miles of paved streets, approximately 95% lighted.

Street Cleaning, Snow Removal and Road Maintenance

Maintenance of public roads in Stratford is unparalleled in the State of Connecticut. Snow removal and cleaning is done promptly and efficiently with modern, well-cared-for equipment.

Water Supply

Stratford's water is supplied by the Bridgeport Hydraulic Company out of the Trap Falls Reservoir in Shelton. This reservoir, with a capacity of 2,337,000 gallons, ranks second in water *supply* and water *quality* in the State. A pressure of 35-102 psi is maintained.

Police Department

The Stratford Police Department consists of the following services: Radio Patrol Division (ambulance-equipped), Rescue Service (trained to cope with crisis and disasters), a corps of well-trained Civil Defense Auxiliary Officers (to aid the Rescue Service), Traffic Division, Detective Bureau (including a separate Youth Board) and Police Athletic League (sponsors Little League, Babe Ruth League and PAL Band).

Refuse Collection and Disposal

The Refuse Collection Division of the Stratford Public Works Department provides weekly garbage and refuse collection for all private dwellings. A daily collection is made from all public schools. The Town plans to start construction on an up-to-date municipal incinerator plant very soon.

Hospitals and Medical Care

The excellent facilities of the Bridgeport, Park City, St. Vincent's and Englewood Hospitals, all located in Bridgeport, are available to Stratford residents. Twenty-five physicians and twenty dentists have local offices within the Town.



The Bridgeport Hospital



Fire Department

The Stratford Fire Department regularly employs 64 men in three 8-hour shifts. It also utilizes the services of a well-trained Volunteer Division. In the main headquarters and two branch fire houses, the Department maintains modern fire apparatus including a 75 foot aerial truck and a new 750 gallon pumper. All fire apparatus is radio equipped.



(Al Mathewson)



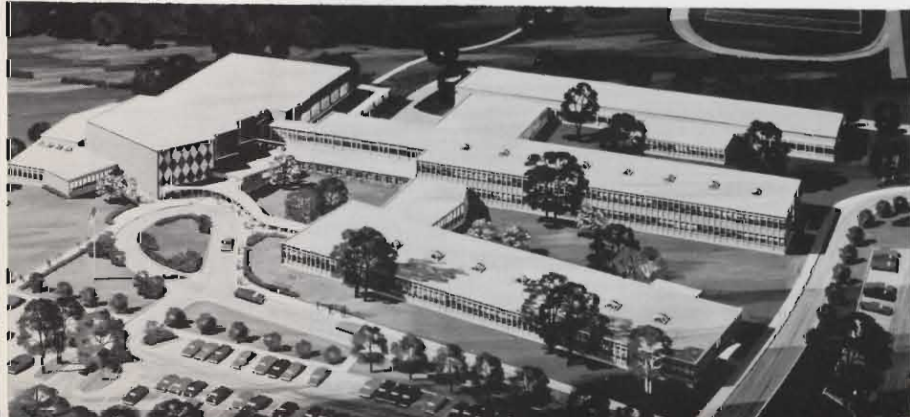
SAMUEL JOHNSON JR. HIGH SCHOOL

Schools

- 13 Elementary Schools
- 2 Junior High Schools
- 1 High School
- 1 High School under construction
- Putney School for Retarded Children
- 2 Parochial Elementary Schools



CHAPEL STREET SCHOOL
(Elementary)



NORTH SR. HIGH SCHOOL
(Under Construction)

WE POINT WITH

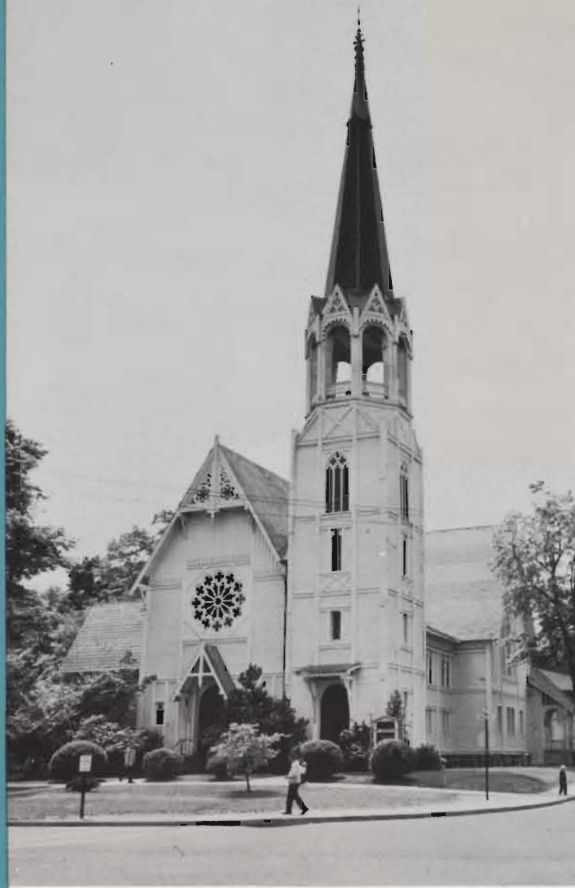
Homes

1959: 11,025 living units



Churches

Stratford has 17 Houses of Worship serving the spiritual needs of the Community. These include: 2 Baptist, 4 Catholic, 2 Congregational, 2 Non-Denominational, Jewish, Greek-Russian Orthodox, Universalist, Episcopal, Methodist, Lutheran and Carpatho-Russian.



FIRST CONGREGATIONAL CHURCH



ST. JAMES ROMAN CATHOLIC CHURCH



STRATFORD JEWISH COMMUNITY CENTER

H PRIDE TO OUR





Booth Memorial Park, one of Stratford's 15 *supervised* public parks. Facilities include basketball courts, playgrounds, picnic areas, ball fields and tennis courts.



The Stratford Shakespeare Theatre famous across the U.S.

MOST IMPORTANT, IN STRATFORD PEOPLE HAVE A GOOD TIME . . . COME JOIN US!



Municipal beaches are clean and well supervised by competent lifeguards.

A Coast Guard Air-Sea Rescue Station is planned for Stratford.



Swimming and boating are made safer — more enjoyable by the careful supervision of the Stratford Water-front Authority.

Year-round recreational programs for children and adults, including a summer day camp, are held at Sterling House.



Town Plan

THE FUTURE OF STRATFORD IS THE WHOLE TOWN'S BUSINESS

**... we're planning
and we're executing
those plans!**

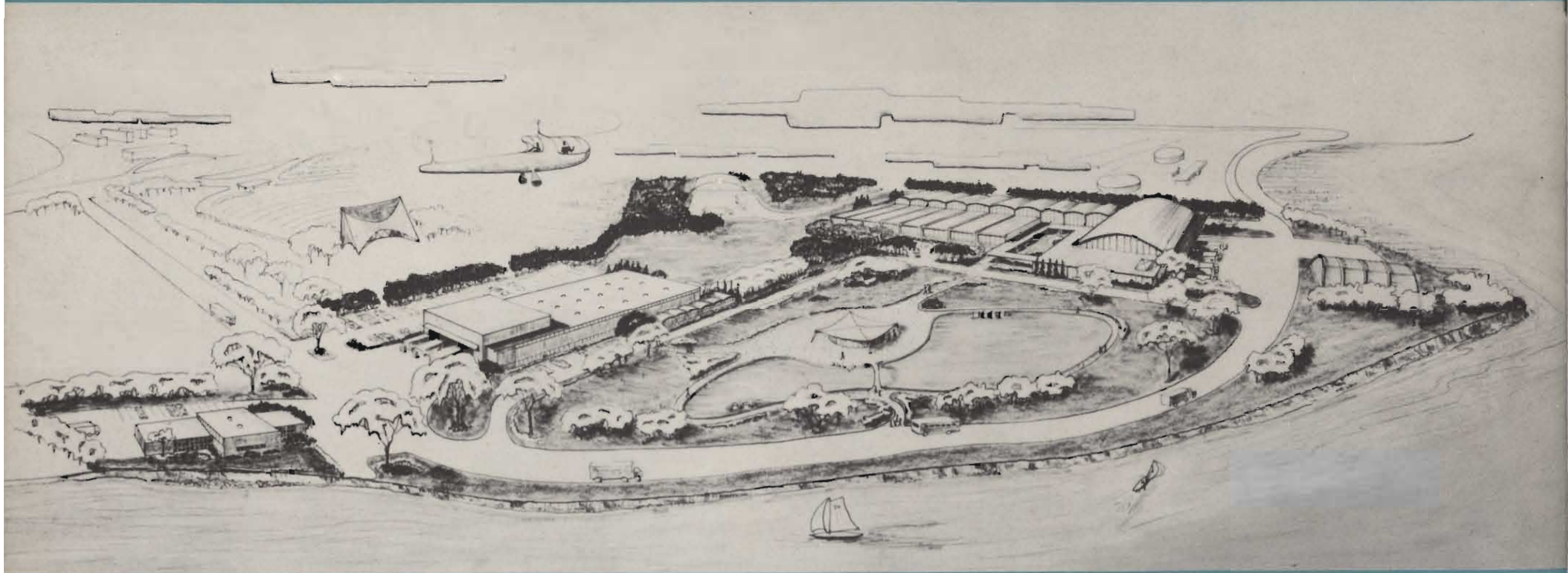
Since the adoption, in 1957, of a comprehensive Plan of Development of Stratford, the work of Stratford's Planning and Zoning Commission has consisted largely of implementing the plan and putting it into effect so that it becomes not merely a collection of well meant words and ideas, but rather, a living flexible guide for the future growth and development of Stratford.

The plan has six major aims designed to accommodate an estimated population of 70,000 by 1970:

1. To increase Stratford's already substantial share of the region's industry.
2. To create the most desirable residential neighborhood possible.
3. To make the most of present schools and plan future ones where 1970 neighborhoods will need them.
4. To keep and preserve sufficient recreational space.
5. To increase the town's share of retail trade.
6. To keep traffic moving freely.

Notes and Comments

Architect's sketch of a proposed Industrial Park



For further information please contact

The Stratford Industrial Development Commission
Mr. Clyde Richardson, Chairman
Town Hall
Stratford, Connecticut

or

Office of the Town Manager
Mr. Harry B. Flood, Town Manager
Town Hall
Stratford, Connecticut
Edison 7-3351