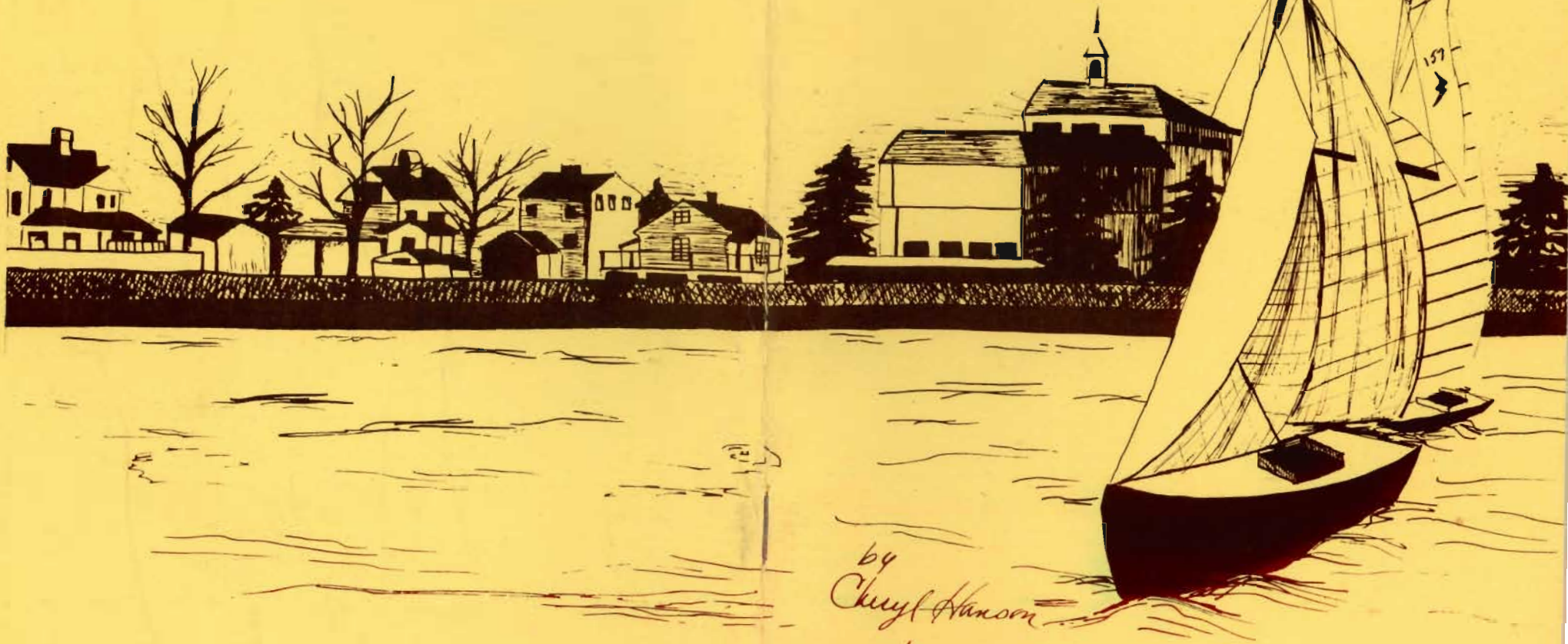


# Discover Stratford



by  
Cheryl Hanson

The League of Women Voters of the Bridgeport Area is deeply grateful to the following sponsors for their generous support.

BANK OF STRATFORD  
 BRIDGEPORT SAVINGS & LOAN  
 ASSOCIATION  
 CITY SAVINGS BANK  
 CITYTRUST  
 COMMUNITY FEDERAL SAVINGS  
 CONNECTICUT NATIONAL BANK  
 HOME SAVINGS & LOAN  
 ASSOCIATION  
 MECHANICS AND FARMERS  
 SAVINGS BANK  
 PEOPLES SAVINGS BANK —  
 BRIDGEPORT  
 STATE NATIONAL BANK OF  
 CONNECTICUT  
 UNION TRUST

### STRATFORD'S PAST AND PRESENT

In 1639 seventeen English families led by the Reverend Adam Blakeman arrived at the place where the Housatonic River flows into Long Island Sound, known today as Stratford, Connecticut.

England claimed the area in 1631 when Charles I gave the Earl of Warwick a patent for it. The town was ruled by a remarkable document, the first Constitution of Connecticut known as the Fundamental Orders, which defined the colony's power as an independent government.

The colonial organization consisted of a governor, John Hayes, a deputy governor, Roger Ludlowe and a General Court to which Stratford and other settlements sent representatives. Local affairs were administered by Townsmen (later Selectmen) elected at large. This town meeting form of government had few changes until 1921 when the Town Manager-Council form was adopted. Originally the town, which had been inhabited by Pequot Indians, included what are today Huntington, Trumbull, Bridgeport and Monroe. Its center was the section where Elm Street crosses South Avenue. Today Stratford includes 19½ square miles and measures 8½ miles from Long Island Sound north to Trumbull and Shelton and 3½ miles west from the Housatonic to Bridgeport. Its geographic center is at the intersection of Main Street and Huntington Road.

Politically, Stratford lies within the 3rd U.S. Congressional District and is a part of the 25th State Senatorial District. \*

The population of the town has increased every decade since 1900. The figures show the population for each census year and the percentage of increase during the 10 year interval.

1900	3,657	----
1910	5,712	56%
1920	12,347	116%
1930	19,212	55%
1940	22,580	17%
1950	33,528	48%
1960	45,012	34%
1970	49,775	10.6%
1977**	50,300**	1.1%**

Twelve faiths and denominations are represented by twenty-one houses of worship. Most of the national, civic and fraternal organizations are represented in addition to local business organizations.

The Sikorsky Airport, located in Stratford, but owned and operated by the City of Bridgeport, handles air service.

Two major State highways, the Merritt Parkway and the Connecticut Turnpike, pass through Stratford with several entrances and exits available within the town. These highways are operated and maintained by the State.

Three bridges cross the Housatonic River from Stratford and are also maintained by the State.

\*See "For Whom You Vote in State and National Elections" on page 19

\*\*Estimated

## PERSONNEL

Stratford employs approximately 500 persons, exclusive of the Board of Education. All of these employees are hired by the Town Manager, under the provisions of the Town Charter.

## RECORD KEEPING

The Stratford Town Clerk and Assistant Town Clerk are in charge of recording public documents, Health certificates, deeds, service discharges, marriage licenses, hunting, fishing, trapping, and dog licenses are all handled by the Town Clerk. The Clerk also receives for record personal property records, trade names, bills of sale, financial statements and mortgages. In addition this office mails all applications and ballots to absentee voters.

The Registrar's Office compiles the lists of registered voters, and maintains their accuracy by means of an annual house-to-house voters' canvass.

## COMMUNITY RELATIONS

The governing body of the town reports to the public through an annual report (including the budget) which is published each September. Information about its activities is reported in the local press and in local radio broadcasts. In addition, the public is encouraged to attend all Council meetings.

## POPULAR CONTROL OF GOVERNMENT

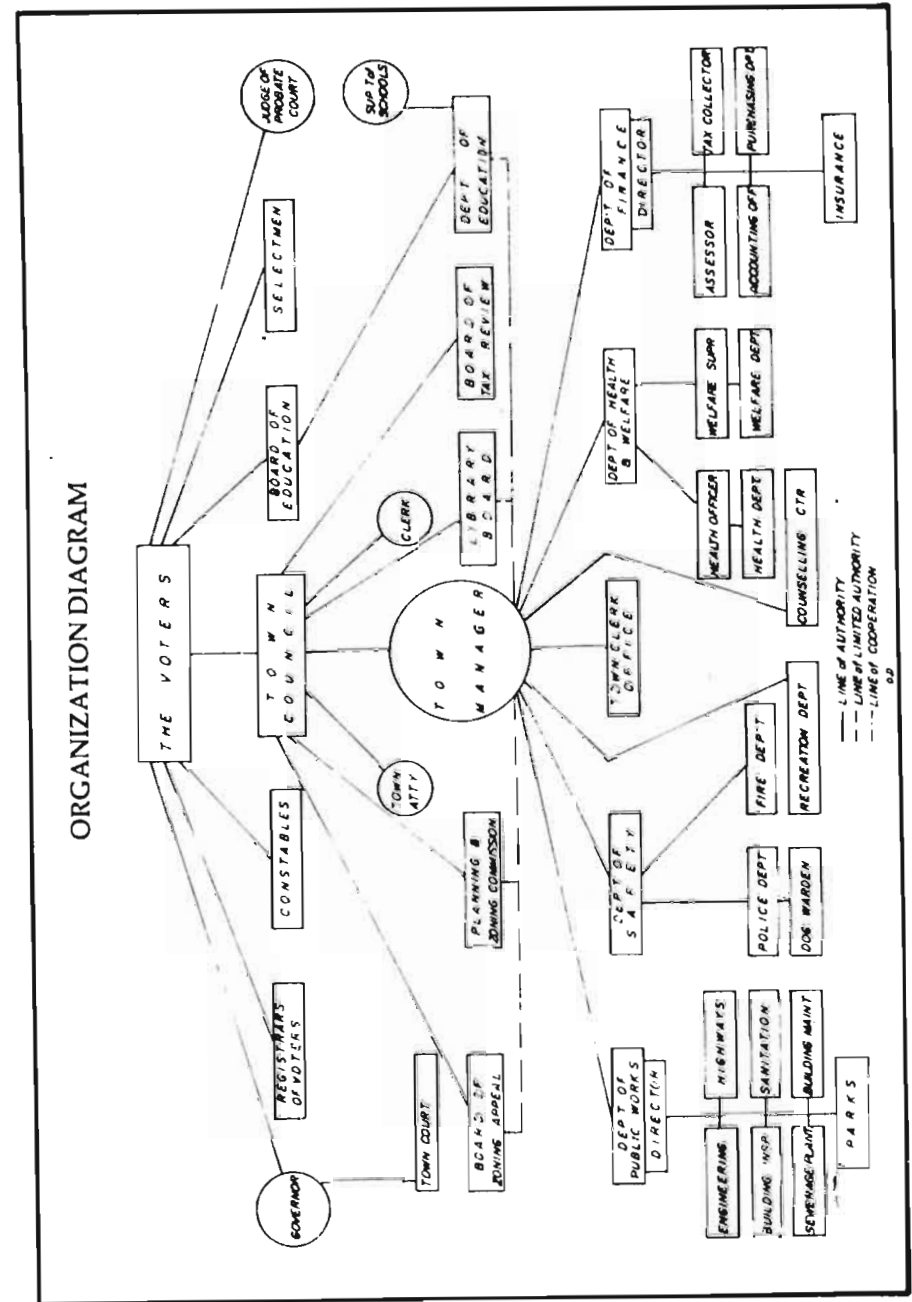
The Democratic and Republican parties are the two organized political groups in Stratford. Each party operates according to its own by-laws. Each Town Committee chooses its own leader for a two year term, and members may hold public office simultaneously with party office. The leaders work with the Town Council, with district leaders, and with County, State and National organizations. They search out candidates for public offices far in advance of elections.

The voters participate in special meetings or hearings when matters such as finance or the education budget are to be discussed at Town Council meetings.

Any person on the party enrollment may be a candidate for office by petition signed by electors on that party list. The number of signatures required on the petition varies. If there is more than one political candidate for an elective office, a primary election must be held, with only party-enrolled electors voting. The person receiving the highest number of votes becomes the candidate in the regular election. Independent candidates may also file petitions and appear on the voting machines on a separate line, with or without party designation.

The district organizations present names to the Town Committee for political office. The Town Committee chooses from these names the persons to be endorsed for office or for appointments to boards and commissions. In cases of appointments to Boards and Commissions, the names are then forwarded to the Town Council for approval.

There are two registrars of voters, one from each party.



## FINANCE

It is the responsibility of the Department of Finance to coordinate all the fiscal activities of the town. The fiscal year begins April 1st. The Town Manager appoints the staff (see chart). It is the function of the department to keep the accounts and financial records, to assess property, to collect taxes and improvement assessments, to disburse town funds and control expenditures according to the direction of the Town Council.

The Municipal Assessor determines taxable value of property.

A Council-appointed Board of Tax Review hears and investigates all complaints.

The Tax Collector receives and accounts for all tax revenues.

Each year the Town Manager presents a comprehensive budget to the Council which reviews it at a public hearing before final action is taken. The budget, administered by the Director of Finance, is binding upon the administration. The Council has the power to appropriate funds and to adjust budget items. Although there is no reserve fund, the budget provides for a contingency fund of \$50,000.

There is one purchasing agent for all town departments, except education, who is responsible to the Director of Finance. Bids are awarded on an open and competitive basis. Stratford uses a Budget Control System which requires all expenditures to be reported to the Town Council. All accounts are balanced monthly and a statement issued.

Local government funds are deposited in Council-approved savings and commercial banks. Idle funds may be invested according to state regulations.

Most revenue received by the town is obtained by taxing real and personal property. The 1975 taxable value of all property, the Grand List, was \$589,882,180, of which 84% was real estate, 8% industrial and 8% all other.

Real estate is reassessed every ten years, as required by State Statute, by an accredited assessment firm. The most recent assessment occurred in 1974. Property is assessed at a constant 70% of market value. The mill rate, which fluctuates, is currently 32.1.

### Source of Revenue

Local — 73 %  
State — 17 %  
Federal — 5 %  
All Other — 5 %

### Expenditures

Municipal — 43 %  
Education — 48 %  
Debt — 9 %

## STRATFORD FIRE DEPARTMENT

The Fire Department is administered by the Chief, who after having passed an examination, is appointed by the Town Manager. His duties are set forth in the Town Charter. He is also the Fire Marshal for the Town of Stratford who enforces the Connecticut Fire Safety Code.

Personnel of the Fire Department number 107 full-time firefighters. Upon appointment, one week's attendance at a Fire School, and a six month probationary period are required. All men are trained in Advanced First Aid Training and Cardio-Pulmonary Resuscitation.

The Stratford Fire Department has four companies: Headquarters on Main Street, the Huntington Road Station, the Prospect Drive Station in Lordship, and the Oronoque Lane Station in the North End.

The Department is equipped with a foam truck for fuel and chemical fires, and an emergency vehicle.

The Bureau of Fire Prevention conducts annual inspections of public and commercial buildings, and multiple family dwellings. In addition, the department supervises school fire drills and gives talks and demonstrations on safety and fire prevention.

Stratford's Fire Department has a reciprocal agreement with surrounding communities for mutual coverage in an emergency. There are no fees involved in this cooperative service. This is a verbal agreement only.

## POLICE DEPARTMENT

The Town Manager, who is the Director of Safety, appoints the Chief of Police.

Total sworn personnel in 1975 numbered 105 men including one police woman plus five civilians. Upon appointment to the department, they attend the Connecticut Chiefs of Police School in Meriden for eight weeks. After a six-month probationary period, an appointee who is judged fully qualified is eligible for a permanent appointment.

Headquarters is at 900 Longbrook Avenue. The Uniform Division of the Department is responsible for answering complaints and emergency calls, enforcing traffic regulations, and caring for equipment. Civilian crossing guards control traffic before and after school.

The Detective Bureau, in addition to routine duties operates:

- The Youth Bureau to handle apprehensions and arrests of those under 16 years of age, as well as the Police Athletic League.

- A Tactical Unit to handle problems regarding vice, drugs, gambling, and special investigations.

In the area of safety education the Department gives talks, distributes pamphlets to the schools, and assists at driver training classes.

Traffic patterns are studied by the Department, which suggests traffic control needs and recommends installation of new signs and lights to the State Traffic Commission.

The Canine Officer works in conjunction with the Police Department and the Canine Control Office Staff. The staff handles all complaints pertaining to dogs, maintain the town kennel, and advertise dogs available for adoption.

## **DEPARTMENT OF PUBLIC WORKS**

The Department of Public Works is made up of the Building Inspection, Engineering, Water Pollution Control, Highway, Sanitation, Building, Maintenance and Park Divisions. These divisions are responsible for the protection of the health and safety of Town residents.

The Director of the Public Works Department, who is appointed by the Town Manager, is a state licensed professional engineer. The Director is responsible for the supervision of the seven divisions of the department and operates from the Town Hall.

The Town Council has created a Public Works Committee formed of five Councilmen who review and make recommendations to the Council on all major public works projects.

### **BUILDING INSPECTION DIVISION**

This unit is responsible for enforcement of the building codes of the Town in all new construction, renovations, alterations, repairs, demolition and uses for design purposes. The building official supervises the division which also includes the Plumbing Inspector, Electrical Inspector, Housing Code Enforcement Officer and Secretary. The office of this division is located in the Town Hall.

Inspections are conducted on an appointment basis for work in progress.

The fees received for permits are placed in the general fund of the Town, and the estimated fee revenue is taken into consideration when the annual town budget is prepared.

The powers of this division come from many sources including the Town Charter, Connecticut State Statutes, Building Code, Tenement Housing Act, and the State Police Fire Safety Code.

The division maintains permanent building records. It also issues permits for plumbers, electricians, gas and oil burner installers, signs, air conditioning, moving and demolition.

### **ENGINEERING DIVISION**

This division performs a variety of technical and professional work associated with all elements of public works projects and the physical development of the Town. Services provided by the Engineering Division include: street and sewer design, long-range public works planning, construction contract administration, establishment of controls and recommendations involving approval of payments to contractors, inspection of new construction and sidewalks, inspection of utility pavement cuts and sub division construction within public rights of way. The Engineering Division is also responsible for the program of sidewalk and curb maintenance, as well as an information source for services relating to public works. The Engineering Division is located in the Town Hall, and is headed by a state licensed professional engineer appointed by the Town Manager.

## **WATER POLLUTION CONTROL DIVISION**

The Water Pollution Control Division is responsible for the operation and maintenance of treatment facilities and the associated sewer network and pumping stations. These facilities process industrial and residential sewage. The effluent discharged into the Housatonic River meets all requirement of the State Department of Environmental Protection and the Federal Environmental Protection Agency. This new facility is located at 105 Beacon Point Road near the boat launching ramp at the end of Birdseye Street.

### **HIGHWAY DIVISION**

This division is responsible for the maintenance and improvement of some 160 miles of streets and for keeping them in a safe, passable and clean condition at all times. Other activities of the division include an on-going program of cleaning the brooks throughout the Town to eliminate the cause of flooding in neighborhoods, construction of drainage facilities, reconstruction of roads, repaving of streets, maintenance of town vehicles, and the annual spring clean-up of unwanted bulk items and a fall leaf pick-up program. The Highway Division is located at 500 Patterson Avenue.

### **SANITATION DIVISION**

The Sanitation Division provides weekly collections to over 16,000 families, and to all public schools, beaches, playgrounds, churches, and trash containers in the business areas of Stratford. In addition, the collection of grass, shrubbery clippings and leaves on a seasonal basis is available to all homes.

The Sanitation Division is responsible for the disposal of the refuse collected. This is done by compacting at the transfer station, operated as part of the Greater Bridgeport Regional Recovery Facility. The transfer station is presently the site of the former Town Incinerator on Lordship Blvd.

The Sanitation Division is located at 500 Patterson Avenue. Solid waste disposal is under the auspices of the Health Department.

### **BUILDING MAINTENANCE DIVISION**

The Building Maintenance Division is responsible for the maintenance of all public buildings, including schools. This division employs several skilled and licensed tradesmen who perform most of the maintenance work in all of these facilities. An ongoing maintenance program provides regular painting in all buildings and regular maintenance to the plumbing, electrical, heating and air conditioning systems. The division is also charged with the maintenance and repair of all traffic control signals in Stratford. The Building Maintenance Division is located at 550 Patterson Avenue.



### PARK DIVISION

The Park Division is responsible for the preservation and maintenance of over 900 acres of parks, beaches and forests, as well as the upkeep of playgrounds, public facilities, and over 10,000 feet of shore front beach property. New facilities are constantly being added to meet the ever growing needs of the community. New construction of facilities and the development and regular maintenance of existing parks, schools grounds and all recreational facilities are the major responsibility of this division. The planting of new trees and shrubbery, as well as the removal of diseased and dead trees throughout the town, is another regular activity of this division. Other activities include mosquito control and insect control. Obnoxious weed control is handled in compliance with Health Department regulations. The Park Division is located at 550 Patterson Avenue.

Park Lands are: Far Mill River, Sedgewick, Spring Pond, Veterans.

Large Parks in Stratford include: Boothe Memorial (Main St., Putney), Longbrook (Longbrook Avenue), Peck's Mill Pond (Main Street), Roosevelt Forest (end of Peters Lane), Wooster Park. Facilities available at some of these parks are: football, baseball, softball, tennis, basketball, tables, benches and fireplaces.

Small Parks are: Academy Hill, Beach Drive, Clover, Columbus, Exchange, High Park, Lyric Park, Motil Pond, North End Park, Paradise Green, Sterling House, Town Hall Park, Town Memorial and Woodend. Facilities at these include: benches, tot lots, play apparatus, basketball courts, skating, and shuffleboard courts.

There are two beaches, Long and Short and two launching ramps, Birdseye and Bond's Dock. There are other recreational facilities at 18 schools, such as an indoor pool at Flood Jr. High, and a handball wall at Wooster Jr. High School.

A comprehensive list of facilities and activities is available from the Town Recreation Department.

### HEALTH

The programs carried out by the local health department are concerned with regulating those areas of health which, if neglected, might endanger the lives of the townspeople.

Standards are set by the State Department of Health regarding inspections of restaurants, sub-surface sewage disposal, and air pollution. Stratford is among the nine communities participating in waste recovery under a contract with the Connecticut Resource Recovery Agency.

The system will process municipal solid waste into four usable products. A refuse derived fuel produced from the combustible portion of the waste stream will be sold to the United Illuminating Company in Bridgeport to generate electricity. Ferrous metals and aluminum will be sold to the Glass Container Corporation in Connecticut.

Environmental health includes supervision of food stuffs, water supply, and certain areas of waste disposal. The Bridgeport Hydraulic Company supplies Stratford with water from the Trap Falls Reservoir, which is given chemical and bacterial tests and treated with chlorine.

### WELFARE

The Department of Welfare administers to the needy of the town. The Town is reimbursed by the State Department of Social Services 90% of its expenditures if approved by the State's auditor.

The function of the department is to give temporary assistance. After determination of the eligibility of the recipient, it may refer a case to the Connecticut State Department of Social Services for Aid to Dependent Children, ADC/Unemployed Parent, Title XIX (medical), and CAMAD (Connecticut Assistance and Medical Aid to the Disabled.) The abused, neglected and battered child is referred to Protective Services of the Department of Children and Youth Services.

Federal programs are under Social Security (SSA), Supplemental Security Income (SSI), and Old Age, Survivors and Disability Insurance (OASDI). Where needed, temporary aid is given pending approval of the application.

In addition, transients are helped, evictions handled, emergency medical may be met, and expenses paid for pauper burials.

### STRATFORD VISITING NURSE ASSOCIATION

The Stratford Visiting Nurse Association provides a "Care to the Sick" program which includes skilled nursing, physical therapy, speech therapy, and home health aide services; plus a full range of "Preventive Services." Services are provided in the home, clinic, community, classroom and our offices.

Specialized nursing services include: maternal and child health, communicable disease control, mental health, adult health supervision, providing skilled nursing services to homebound persons with acute and chronic diseases such as cancer, diabetes, cardiovascular disease, etc.

## THE STRATFORD COUNSELING CENTER

Established as a reaction to, and a resource for, drug abuse, The Stratford Counseling Center provides social services to the Stratford community. The Center employs eight full-time staff, five of whom are professionally trained counselors, and also maintains a consulting psychiatrist.

The staff cooperates with local school officials, police officers, juvenile court personnel and other social service agencies. This is an initial step in the development of an integrated youth service system for Stratford.

Some treatment programs are:

- Professional Counseling - Utilizing a family systems approach, the professional staff designs a program of individual, group, marital, and family counseling specifically tailored to a person's unique needs. A wide base of experience in family dynamics, parent-child relationships, juvenile delinquency, and other concerns most frequently encountered by contemporary families enable our staff to competently aid in difficult situations.

- Inscape - A peer oriented program, operating five days a week (and occasionally on weekends), that provides regularly scheduled group, individual and family counseling sessions, a selection of educational, vocational and recreational workshops, and training labs to develop peer group leadership. Program members usually range in age from 13 - 18 and are referred by Juvenile Court, the School Systems, the Police Department, area social service agencies, and other program members. Inscape operates in close connection with our family counseling program.

- Alcohol and Drug Abuse Services - Though a regional contract, the Stratford Counseling Center provides outpatient treatment services, educational and prevention type programs, inservice training to special interest groups, and multi modality referral for any substance abuse need.



- Host Homes Program - Co-ordinated by the Stratford Counseling Center, this is a network of volunteer host homes that provides emergency shelter on a short term basis for Stratford youth, age 13 - 18, who either run away from home or are forced to leave. In most cases all concerned parties are engaged in a counseling process that aims at reconciliation or an appropriate placement outside the home.

Some non-treatment programs are:

- Rent-a-Kid - This youth employment service helps young people find part-time jobs throughout the year. Utilizing both residents and local businessmen as a primary source of job placement, it has successfully filled more than 500 part-time vacancies in the past three years. These openings included yard work, house work, babysitting, mother's helper, pool maintenance, light carpentry, moving, painting, and a wide variety of more specialized positions.

- Community Education - One of the most important aspects of the Stratford Counseling Center is an ongoing attempt to heighten citizen awareness of the many difficult human situations which currently exist in Stratford on both the youth and adult levels. The Stratford Counseling Center offers the services of a speakers' bureau, training laboratories, and workshops, a resource library, free printed materials, and a continuous program of workshop presentations for all segments of the community. In addition, consultative and supportive services are provided. Ongoing involvement is with the Elderly Nutrition Program which ensures that senior citizens are given the opportunity to discuss concerns with a counselor.

- Legal Aid - Assistance in all civil matters is available to any resident who cannot afford a lawyer. As co-ordinated by the Stratford Counseling Center, Legal Aid is a completely volunteer effort. Services are donated by local lawyers interested in their community. The financial need of the recipient of these services is determined by federal guidelines. Since the program's inception in August, 1972, more than 350 people with legal problems have utilized the services of the Stratford Counseling Center.

- Youth Service Bureau - The Counseling Center has been designated as the lead agency in Stratford to develop a coordinated network of services for youth in Stratford. This includes assessing the needs of youth in Stratford, developing plans to meet those needs, providing technical assistance to local youth serving agencies and developing an integrated referral network for troubled youth. The Center has also developed a Youth Council which consists of 30 youth who have direct input into the youth planning process as well as a Youth Advisory Board consisting of heads of youth serving agencies, government officials, parents and youth who assist in the planning process.

A discussion group for mothers of pre-school children was formed. This group meets weekly to explore areas of mutual concern and discuss relevant topics in childrearing.

### THE COURT OF COMMON PLEAS

The Court of Common Pleas may hear civil cases in which the amount in controversy is up to \$15,000, and criminal cases in which the fine or imprisonment is not more than \$1,000 or one year in jail or both. These cases include substantially all motor vehicle violations in addition to all violations of local ordinances and by-laws regulations. This court also hears cases on appeal from Town Planning and Zoning Commissions, Zoning Commissions and Zoning Boards of Appeal.

Trial may be had before a judge or before a jury of six persons. Judgements may be appealed to the Appellate Division of the Superior Court.

The Court's Small Claims Division is limited to Civil Matters up to \$750 and provides for neither appeal nor jury.

The Family Relations Division attempts to solve various family problems which come into this court such as non-support claims.

The Court of Common Pleas addresses are as follows:

- Criminal matters 172 Golden Hill Street, Bridgeport
- All other matters 1061 Main Street, Bridgeport

### THE SUPERIOR COURT

The Superior Court's authority extends over civil cases with at least \$7,500 claimed, and over criminal action exceeding the Court of Common Pleas jurisdiction. In addition, the Court hears appeals from the Juvenile and Probate Courts, and maintains a Domestic Relations Division.

The Superior Court holds sessions in the Court House at 1061 Main Street, Bridgeport.

### JUVENILE COURT

The Juvenile Court has exclusive original jurisdiction over most matters concerning uncared for, neglected, dependent and delinquent children under age 16.

### THE PROBATE COURT

The Probate Court has jurisdiction over estates of the deceased, guardianship, adoption, incompetents and the problems concerning the same.

The Probate Court is located in the Stratford Town Hall, and is open business hours of the same.

### THE SUPREME COURT OF CONNECTICUT

The Supreme Court is the highest state court and consists of the Chief Justice and four Associate Judges, and it hears appeals from the lower state courts.

### U.S. DISTRICT COURT

This Court located at 915 Lafayette Boulevard, Bridgeport, handles all cases of a Federal nature including Patent and Anti-Trust cases, appeals from Federal Agencies such as the Social Security Administration and Constitutional Cases.

### VOTING INFORMATION

**REGISTRATION** - Any bona fide resident of Stratford may register to vote any time during Town Hall office hours except during the four week period before election day when only those turning 18 or becoming a citizen may register. There is no longer any time requirement of residency. Extra "voter-making" sessions are held at night and on some Saturdays and these dates are announced in the press or may be determined by calling the Registrar's office, Town Hall. One need only fill in the application and an elections official will administer the Elector's oath. A new (1975) law provides for cross-town registration in any city or town in Connecticut. This means that a Stratford resident working in Stamford, for instance, may find it more convenient to apply in Stamford. The information will be forwarded to Stratford and the voter will be notified when the process is complete and he is registered to vote in Stratford.

Special provisions are made for people who are unable to come to Town Hall to register because of physical disability. Other aids to registration are State provisions requiring Registrars and other appropriate personnel to go to the premises and hold a voter-making session upon signed request of at least 25 unregistered persons residing in the same town and employed at the same place, attending the same school, or residing in the same hospital, home for the aged, or nursing home.

**VOTING** - Stratford uses voting machines at all polling places as is done throughout Connecticut. Use of the machines is demonstrated at special voter-making sessions and at the polls during elections. The first Tuesday after the first Monday in November is election day. Local officials are on the ballot in odd-numbered years; state and national elections occur in even-numbered years. Primary contests, if any, are held in September on the 56th day preceding election day.

**ABSENTEE BALLOTS** - An absentee ballot is available for a primary or regular election to anyone who will be absent from the State on election day, is in full-time attendance at an institution of higher learning, is serving in the armed forces, is confined because of illness or disability, or is confined in a correctional facility provided his voting privileges are not forfeited. An application must first be filled out and returned to the Town Clerk's office before the absentee ballot is sent to the voter. Starting this year, this ballot will be a facsimile of that on the voting machine. It must be voted, returned to the Town Clerk, and received no later than the close of the polls on election day.

**POLITICAL PARTIES** - When a person registers to vote, an opportunity is given to join a political party. At present in Stratford these are the Republican and the Democratic Parties. A voter may remain unaffiliated but, as such, may not vote in any primaries, participate in any party caucuses, or run for office on a party ticket.





**PERMITS OR LICENSES ARE NECESSARY FOR THE FOLLOWING, AND ARE ISSUED BY:**

**BUILDING INSPECTOR**, Town Hall, Main Street, Stratford  
 Building Construction, Alterations, Additions, Repairs. Wrecking, Moving, Raising and Occupancy. Swimming Pools, Signs, Plumbing, Electrical, Oil Burners, Gas Burners.

**ENGINEERING DEPARTMENT**, Town Hall, Main Street  
 Sewer Tapping, House Numbers, Sidewalks, Curbs and Driveway Approach Construction and Reconstruction along Highways, Street Excavators.

**FIRE DEPARTMENT**, 2704 Main Street  
 Kindling Fires (under certain circumstances). Storage and Use of Explosives of all types.

**POLICE DEPARTMENT**, Longbrook Avenue  
 Bingo Permits, Vending, Revolver Permits, Solicitors Licenses, Raffles and Bazaars.

**RECREATION DEPARTMENT**, 550 Patterson Avenue  
 Permits for use of Athletic Field, Tennis Courts.

**TOWN CLERK**, Town Hall, Main Street  
 Dog Licenses, Fishing Licenses, Hunting Licenses, Marriage Licenses, Trapping Licenses, Bee Permits, Liquor Licenses, Burial Permits, Disinterment Permits, Majority Cards.

**HEALTH DEPARTMENT**, 2730 Main Street  
 Restaurants, Catering Services, Seasonal Stands, Rooming Houses, Groceries, Bakeries & Meat Markets, Solid Waste Licenses, Well and Septic Tanks.

**DATES TO REMEMBER**

JANUARY 1	Restaurant Licenses (renewals due) Catering Services
FEBRUARY 1	Solid Waste Licenses renewable
FEBRUARY 1	And other designated days in February, the Board of Tax Review holds hearings to hear complaints of Taxpayers as to assessments. No appeal after these dates.
MARCH 1	Liens filed on property on which there are unpaid taxes
APRIL 1	First Half of property taxes due.
APRIL 1	Fiscal year commences.
MAY 15	Last day for elderly to file for property tax exemptions.
JUNE 1	Groceries, Bakeries & Meat Markets (licenses renewable).
OCTOBER 1	Second half of property taxes due.
OCTOBER 1	Assessment Date - Real and Personal Property.
OCTOBER 1	Last day for ex-servicemen to file discharge papers with Town Clerk in order to claim State Exemption.
NOVEMBER	Election Day. (1st Tuesday after the 1st Monday)
TOWN COUNCIL	Meets second Monday of each month and at Special Meetings when called by the Council Chairman. Meetings are held in Council Chamber, Town Hall. Open to public. Only Councilmen may participate in discussion.
PLANNING & ZONING COMM.	Meets the second Wednesday of each month in the Council Chamber.
BOARD OF ZONING APPEALS	Meets the first Tuesday of each month in Council Chamber.
PUBLIC HEARINGS	Open to the public for general discussion. Dates are publicized.

## HOUSES OF WORSHIP

### ADVENT CHRISTIAN

Advent Christian Church of Stratford, 1326 Nichols Ave. 375-3419

### BAPTIST

First Baptist Church of Stratford, 1301 Stratford Ave. 377-1441  
Stratford Baptist Church, 131 Huntington Rd. 375-7768

### EASTERN ORTHODOX

Orthodox Greek Catholic Church of St. John The Baptist,  
1240 Broadbridge Ave. 378-4007  
Russian Orthodox Church of Presentation of Christ in the Temple,  
5 Wheeler Ter. 375-8342  
St. John the Baptist Canonical Church, 600 Silver Lane 374-2672  
St. Nicholas Russian Orthodox Church, Honeyspot Rd. and South Ave.  
375-2786

### EPISCOPAL

Christ Episcopal Church, 2000 Main St. 375-4447

### JEHOVAH'S WITNESSES

Jehovah's Witnesses, 235 Albert Ave. 375-0379

### LUTHERAN

Grace Evangelical Lutheran Church, 150 Chapel St. 375-3151

### METHODIST

Stratford United Methodist Church, 2600 Main St. 375-5851

### MISSIONARY ALLIANCE

Bethany Alliance Church, 1775 Huntington Rd. 378-6067

### UNITARIAN UNIVERSALIST

Unitarian Universalist Church of Greater Bridgeport, 96 Chapel St.  
378-1020

### UNITED CHURCH OF CHRIST

First Church Congregational, 2301 Main St. 378-2644  
Lordship Community Church, 179 Prospect Dr. 377-6568

### ROMAN CATHOLIC

Holy Name of Jesus, 1950 Barnum Ave. 375-5815  
Our Lady of Grace, 497 Second Hill Lane 377-0928  
Our Lady of Peace, 230 Park Blvd. 377-4863  
St. James Roman Catholic Church, 2110 Main St. 375-5887  
St. Marks, 535 Wigwam Lane 377-0444

### SYNAGOGUE

Temple Beth Sholom, 275 Huntington Rd. 378-6175

## FOR WHOM YOU VOTE IN STATE AND NATIONAL ELECTIONS

FOR A FOUR YEAR TERM: 1974, 1978, etc.

State Officers: Governor, Lieutenant Governor, Secretary of the State, State Treasurer, State Comptroller, and Attorney General.

Local and State Officers: Judge of Probate, and County Sheriff.

FOR A TWO YEAR TERM: 1976, 1978, etc.

U.S. Congress: 1 Congressman (3rd District)

Connecticut General Assembly: 1 Senator (21st District): 3 Representatives (Districts 120, 121, 122\*)

FOR A FOUR YEAR TERM ( LEAP YEARS): 1976, 1980, etc.

President of the United States and Vice-President of the United States.

(Connecticut voters vote for a slate of eight electors nominated on a Party ticket and they in turn vote for the Presidential and Vice-Presidential candidates of their Party through the Electoral College.)

FOR SIX YEAR TERMS:

1 United States Senator 1976, 1982, etc.

1 United States Senator 1974, 1980, etc.

(One-third of the total number of U.S. Senators complete their terms biennially. Only one-third of the seats in the Senate are filled in each Congressional election.)

\*122nd Assembly District includes Trumbull and part of Stratford.

## PLANNING AND ZONING

The Planning and Zoning Commission consists of five members elected to four year terms. Members have previously been Town Council appointed, but as of 1979 a gradual turnover will be complete, and all members will be elected.

The open meetings, conducted in the Council Chambers, are scheduled when petitions warrant. Hearings are held on each petition that is submitted, and all petitions are legally advertised twice before the public hearing, and once after the public hearing. Recommendations are requested from town departments regarding individual petitions. Outside consultants may be employed when the need arises.

The duties of the Planning and Zoning Commission are as follows:

- To keep itself informed of the progress of town planning statewide.
- To study and make recommendations for improvements of the town plan.
- To consider in its planning, the present and future movement of traffic.
- To consider recreation, general welfare, health and other needs of the townspeople.
- To consider and report to the Town Council on designs for all new public ways, lands, buildings, bridges, and other public places, including additions or alterations to those already in existence.
- To approve new subdivisions for the town.
- To control height, design and appearance, all location of buildings, and make final determination of land use.
- To divide the Town into zoning districts.
- To examine each building permit for zoning compliance.

The current Planning and Zoning regulations were adopted in 1957 and amended in 1964 in accordance with the up-dating of the Plan of development of the Town of Stratford. Before zoning regulations are adopted or amended, the citizens of the town are given an opportunity to be heard at a meeting called for that purpose. In addition, the Commission conducts hearings on all matters, including special exceptions.

In order to attract new business or industry, the Planning and Zoning Commission is empowered to improve land use and prevent erosion of land values. It works with the Economic Development Commission toward the goal.

## BOARD OF ZONING APPEALS

The Board of Zoning Appeals consists of five members, who may not be members of the Zoning Commission. It is authorized to vary the application of the zoning regulations in harmony with their general purpose and intent, with due consideration for conserving public health, safety, convenience, welfare and property values. The Board meets the first Tuesday of each month.

## THE PLAN OF DEVELOPMENT FOR TOWN OF STRATFORD

The Plan of Development for the Town of Stratford deals with present and future land use proposals, community facilities and highway systems. It was revised in 1964 under a Federal Urban Planning Assistance Program with the direction of the Stratford Planning and Zoning Commission and the Connecticut Development Commission.

The Plan is designed on the basis of a projected population. It provides for open space, traffic design, highway location and relocation, industrial growth, future community facilities including schools, parks, playgrounds and other items for the future needs of the community.

The Plan has six major aims designed to accommodate the projected population:

- To increase Stratford's substantial share of the region's industry.
- To create the most desirable residential neighborhoods possible.
- To make effective use of present schools and plan future schools.
- To preserve sufficient recreational space.
- To increase the town's share of retail trade.
- To keep traffic moving freely.

For federal planning assistance funds, a town must have an active Citizen's Advisory Committee. Ours was formed in 1961 and consists of citizens appointed by the Council. The Committee operates under Federal regulations, and its duties are to study, review and recommend existing codes and ordinances as they govern health, building and land use policies.

Stratford's Planning and Zoning Commission also participates in the Greater Bridgeport Regional Planning Agency and works in close cooperation with the Town's Redevelopment Agency.

## ECONOMIC DEVELOPMENT COMMISSION

The Stratford Economic Development Commission is an active, five person commission (each commissioner serving for a five-year Term) appointed by the Town Council and chartered by the State. Monthly meetings are held in the offices of the Stratford Redevelopment Agency.

The purpose of the commission is to foster economic growth and diversity of Stratford's business and industrial base in an effort to strengthen the tax base and provide job opportunities for Stratford's growing population.

Along with the efforts of the Town's full-time Economic Coordinator, a business-industrial brochure of Stratford has been published funded by the Stratford Business and Industry Association. A current vacant land and building file is maintained for interested businesses and realtors, and a multi-million dollar grant application for economic development activities has been completed.

Interaction with both Regional Planning and Chamber of Commerce committees allows cooperation and an exchange of ideas between government, business and planning groups.

## **GREATER BRIDGEPORT REGIONAL PLANNING AGENCY**

The Greater Bridgeport Regional Planning Agency (GBRPA) is a voluntary association of municipalities which does areawide comprehensive planning for Bridgeport, Easton, Fairfield, Monroe, Stratford and Trumbull.

The Agency recommends, guides and promotes the orderly development of the Region. It coordinates its planning program with local, state and federal agencies, boards and commissions, and private organizations whose fields of concern encompass the Greater Bridgeport Planning Region.

## **STRATFORD REDEVELOPMENT AGENCY**

Established in 1962 by the Stratford Town Council, the Stratford Redevelopment Agency is a five member agency with the responsibility to up-grade areas of the town that are inconsistent with the total community.

The first project area selected is in the south end of town, known as the Frash Pond Renewal Project. The plan will create 43 single family homes; eliminate incompatible residential and industrial land use; create a landscaped buffer area between the residential and industrial areas; and enhance the community's economic base. The Stratford Redevelopment Agency is located at 19 Bates Street, Stratford.

## **CONSERVATION COMMISSION**

The Commission is involved in Environmental Education. It has published the "Red Triangle Walk Guide" for Roosevelt Forest, and presented a series of Land Use Workshops.

The Commission is also responsible for the development of Peck's Mill Pond Park at the southern junction of Main Street and River Road.

A Conservation Plan for Stratford is formulated, and a bikeway plan is ready for construction.

All environmental changes would be subject to the scrutiny of the State Department of Environmental Protection (DEP).

## **STRATFORD WATERFRONT AUTHORITY**

The Stratford Waterfront Authority was established by an act of the 1957 Connecticut General Assembly.

The Authority is responsible for preserving, protecting and enhancing the town's waterfront areas. This includes, but is not necessarily limited to, making regulations concerning piers, boat basins, beaches and structures built in close proximity to Long Island Sound or the Housatonic River.

The Authority regulates usage of Short Beach Park and Long Beach, Birdseye Street Boat Launching Ramp, and the Short Beach Court Games Complex.

The Authority also plans for the future development of the Town's waterfront.

## **HOUSING AUTHORITY**

The Housing Authority of the Town of Stratford has been in existence since 1943. Responsibility for operation of the local authority rests with five Commissioners who are appointed by the Stratford Town Council. Each Commissioner serves a term of five years.

The local Housing Authority has six projects which it administers. The projects are:

- Shiloh Gardens, 175 Henry Avenue Stratford 60 units of Moderate Rental Elderly Housing, plus one Community Building. It was built in cooperation with the State of Connecticut in 1962.

- Raymond E. Baldwin Apartments, Griffin Street, Stratford 75 units of Elderly Housing, plus one Community Building. It was built in cooperation with the Dept. of Housing and Urban Development (HUD) in 1974.

- Robert Francis Kennedy Apartments, Birch Drive, Stratford 75 units of Elderly Housing and one Community Building. It was built in cooperation with the Dept. of Housing and Urban Development (HUD) in 1968.

- Elm Terrace Gardens, Leeward Drive, Stratford 50 units of Elderly Housing and one Community Building. It was built in cooperation with the then, Public Housing Administration in 1962.

Eligibility Requirements: Persons 62 years and older or permanently and totally disabled.

- Hearthstone Apartments, Gregory Circle, Stratford 100 units of Low-Rental Family Housing and Administration Building. It was built in cooperation with the then, Public Housing Administration in 1962.

- Meadowview Manor, McPadden Drive, Stratford 100 units of Moderate Rental Family Housing. It was built in cooperation with the State of Connecticut in 1962.

There are income limits for admission to both State and Federal Projects. Rents in Federal projects are based on percentage of income. Rents in State Projects are based on size of unit.

The Housing Authority is also administering a Section 8, Existing Housing Program for 48 Family Units, and 60 Elderly Units. This is a Rent Supplement Program by HUD which permits families requiring housing to apply to the Housing Authority for a Certificate of Family Participation, which when issued permits the family to receive a rent supplement. Income of families and the relationship between the asked for rent, and the HUD approved Fair Market Rent determines if the family and landlord can participate in the program.



## EDUCATION

The superintendent of schools, appointed by the Board of Education according to state requirements, serves a three year term. He directs the operation of the school program, coordinates departments and personnel, oversees purchase of textbooks, instructional supplies and educational equipment, recommends to the board the appointment of all personnel and submits annual reports of financial needs, school operations and curriculum changes. By law he is a member ex-officio of the Board of Education, and is present at its meetings but has no vote. The superintendent in Stratford is assisted by a deputy superintendent of schools, one assistant superintendent in charge of business and auxiliary services and a director of personnel.

Serving the school system in a professional capacity are the supervisors, principals and teachers. Each must be certified according to the requirements of the state for a given position, and each receives compensation according to a salary scale based on years of service and years of preparation. For the 1976-77 school year Stratford employed 468 teachers, 260 in the secondary schools and 190 in the elementary schools. There were 18 special education teachers.

8,881 pupils are enrolled in the public schools of Stratford. They are housed in 13 elementary schools where the pupil-teacher ratio is 23.7, and on the secondary level in three junior high and two senior high schools where the pupil-teacher ratio is 18.3.

Building, staffing and operation of all schools is paid for by real estate and personal property taxes locally, plus state and federal grants. Money borrowed for new construction is raised by the town through sale of bonds. In 1977-78 the operating budget for the Stratford Public Schools is approximately 48% of the town budget.

In addition to state grants in aid, federal grants are provided under several different statutes.

The average per pupil cost last year was \$1,377. The town received an average of \$357 per pupil state and federal aid, so the net cost to the town was \$1,020 per pupil or \$5.67 net cost per pupil per day.

Besides providing the plant and instruction for the town's school-age population, Stratford supplies transportation for the pupils under certain conditions.

The need to provide for individual differences is a basic element in Stratford's philosophy of education. Each student is helped to attain to the fullest possible extent, in terms of his or her ability, mastery of the basic skills as well as knowledge and appreciation of human achievement in the natural sciences, the social sciences, the humanities and the arts.

To keep pace with a changing world, research for curriculum improvement is an on-going responsibility of all departments. All areas of the curriculum are coordinated from the elementary grades through high school.

Programs for gifted and talented students begin on the elementary school level and extend into the high school where provision is made for independent study and for instruction in accelerated or college level courses. Tutoring and remedial programs are also provided at all levels for students who need special instruction.

A number of Stratford students attend school at regional centers such as the Vocational Agricultural School, Bullard Havens Technical Institute, and the Platt Technical School. Stratford will also participate in the High School for the Talented in the Arts.

A program in adult education is a state requirement for towns of over 10,000 population. Special courses may be petitioned by 20 applicants. Classes are held in Stratford High School on Monday, Tuesday and Wednesday evenings in academic, business and technical courses for a ten week semester in fall and spring. Average attendance is 600 and average class size is 15.



### RECREATION

The Recreation Department is headed by a full-time supervisor who has two assistants during the summer.

The winter program from November through March, is operated two or three evenings each week in seven of the public schools. This program includes an adult activities program, as well as a sports program for children between the ages of 13 and 16.

Approximately 24,000 children register for the summer program at the parks and sixteen playgrounds. This program includes crafts, sports, and contests. Accredited life-guards staff Short and Long Beaches, and there is year-round swimming at Flood Jr. High School.

This department also sponsors a Halloween Parade, concerts in the summer, and issues permits for the use of tennis and paddle tennis courts.

There are several Community recreation facilities sponsored by non-governmental organizations: Sterling House, YMCA, P.A.L., Lycoming, Sikorsky and Raybestos baseball teams.

The Recreation Department also sponsors a Senior Citizen Drop-In Center and Mini-Bus. The basic objective of the multi-purpose center is to provide the Town with a better means of meeting the needs of its elderly citizens. The second objective is to provide the elderly with the opportunity of effective social contact and communication with persons of similar needs and interests, to keep the senior citizen in the mainstream of life so that they may retain their independence and avoid premature institutionalization.

The center serves 2,145 members with a widely varied recreation program, transportation, health information and assistance in doing business at government service centers. The Drop-In Center presently meets in the all-purpose room of the Methodist Church.

The Mini-bus provides transportation to senior citizens who do not have other transportation for keeping appointments with doctors, rehabilitation centers, social service centers and similar services relative to the conduct of business today. Seniors call in two days in advance of their appointment so that a route is planned which takes care of several at a time.

### STRATFORD LIBRARY

The Stratford Library Association provides library service through two outlets. The main library is located at 2203 Main Street near the center of town. The North End branch is located on upper Main Street at the corner of Wakelee Avenue.

Funds to operate the library come from three sources: the primary source of funds is tax revenues allotted to the library by the Town Council, the second source is dividends from an investment of funds received from bequests and endowments, the remaining source is a state grant.

In 1895 the Connecticut General Assembly by joint resolution incorporated the Stratford Library Association. Its 22 members are comprised of eleven life members, who together own the library building and land, and eleven members who are appointed by the Council for a three year term. Successors to life members are named by those remaining.

The library has approximately 86,000 volumes. Periodicals are available as well as several daily newspapers. Of special interest are a fine Shakespeare collection for reference, an outstanding local history collection and a Braille typewriter which may be borrowed.

The Children's Department conducts active essay, poster and diorama contests, as well as monthly story hours and special summer programs.

### STERLING HOUSE COMMUNITY CENTER

Sterling House Community Center at 2283 Main Street, Stratford, provides instruction and activities for all age and interest groups. It sponsors many cultural and recreational programs such as: art classes and exhibits, athletic and game activities, clubs, dancing and dramatic classes, day camps, pre-school sessions, music lessons and recitals, a domestic service listing which includes companions and baby sitters, and a room rental listing.

### CONNECTICUT AUDUBON SOCIETY

The Larsen Sanctuary, a 152 acre wildlife preserve with an environmental studies center at 2325 Burr Street, Fairfield, is open every day from dawn to dusk. The building is open Tuesday - Saturday from 9 - 5 and Sunday 12 - 5 P.M. There is a small admission fee. The Museum on Unquowa Road, Fairfield houses 2,000 specimens of Connecticut birds, the nationally famous Shang Wheeler waterfowl decoy collection, and seasonal exhibits. Open Saturday 10 - 5 and Sunday 12 - 5. Free admission.

## BOARDS AND COMMISSIONS

NAME	MEMBERS	APPOINTED BY	TERM	DUTIES	HOW PAID
PLANNING AND ZONING COMMISSION	3 alternates	Town Council 1 each year	3 years	Plan Town development.	No Salary
BOARD OF ZONING APPEALS	3 alternates	Town Council 1 each year	3 years	Grant relief in zoning hardships.	No Salary
HOUSING AUTHORITY	Five	Town Council 1 each year	5 years	Construct public housing.	No Salary
REDEVELOPMENT AGENCY	Five	Town Council 1 each year	5 years	Select areas for rebuilding.	No Salary
LIBRARY BOARD	Twenty-two (11 Life 11 Town)	Town Council 3 or 4 each year	3 years	Provide library facilities.	No Salary
WATERFRONT AUTHORITY	Five	Town Council 1 each year	5 years	Develop beach and boat facilities.	No Salary
CONSERVATION COMMISSION	Seven	Town Council 2 each year	2-5 years	Review Town open land use.	No Salary
PERSONNEL APPEALS BOARD	Five	Town Council 1 each year	5 years	Hear Town employee grievances.	No Salary
BOARD OF TAX REVIEW	Three	Town Council 1 each year	3 years	Hear tax appeals.	Salary

## BOARD OF EDUCATION - see under ELECTED OFFICIALS

## ELECTED OFFICIALS

OFFICE	WHEN CHOSEN	TERM OF OFFICE	DUTIES	HOW PAID
Councilmen (One from each district)	(10) Odd Years	2 Years	Power to make, alter and repeal orders and ordinances as directed by the Charter. Taxes, public health, safety, welfare, public works, planning and zoning, recreation and parks.	No Salary
At-Large	(1) Odd Years	2 Years	Council chooses one of its members to act as Council Chairman, recognized as official head of town.	Salary
SELECTMEN	(3) Odd Years	2 Years	Supervise the making of voters.	Salary
REGISTRARS (One from each party)	(2) Even Years	2 Years	Maintain a correct list of electors - conduct an annual voter census. Each appoints a deputy registrar.	Salary
JUDGE OF PROBATE	(1) Even Years	4 Years	Files and probates wills, adoption proceedings, handling affairs of mentally ill.	Fee
CONSTABLES	(7) Odd Years	2 Years	Serve warrants, eviction notices, or other legal documents, i.e., summons and complaints.	Fee
BOARD OF EDUCATION	(7) Odd Years 3-4	4 Years	Supervise, manage and control matters concerning education, schools, school property, and sites of schools, appoint superintendent of schools, legal aspects required by state law.	No Salary
PLANNING AND ZONING COMMISSIONERS	(5) Odd Years	4 Years	Plan Town development.	No Salary
BD. OF ZONING APPEALS	(5) Odd Years	4 Years	Grant relief in zoning hardships.	No Salary

APPOINTED OFFICIALS

OFFICE	APPOINTED BY	TERM	DUTIES	HOW PAID
TOWN MANAGER	Town Council	Contract *	Chief executive and administrative officer	Salary
ADMINISTRATIVE ASSISTANT	Town Manager	Indefinite	Acts in absence of Town Manager	Salary
TOWN CLERK	Town Manager	Indefinite	Keeps official town records, vital statistics	Salary
DIRECTOR OF FINANCE**	Town Manager	Indefinite	Directs and coordinates all fiscal matters	Salary
TAX ASSESSOR	Town Manager	Indefinite	Determines value of property for Grand List	Salary
TAX COLLECTOR	Town Manager	Indefinite	Prepares tax bills and collects taxes	Salary
PURCHASING AGENT	Town Manager	Indefinite	Buys all Town supplies except education	Salary
INSURANCE SUPERVISOR	Town Manager	Indefinite	Handles Town self-insurance	Salary
DIRECTOR OF SAFETY**	Town Manager	Indefinite	Protect public safety	...
FIRE CHIEF	Town Manager	Indefinite	Administers public fire protection	Salary
POLICE CHIEF	Town Manager	Indefinite	Administers public police protection	Salary
DOG WARDEN	Town Manager	Indefinite	Control of stray dogs	Salary
DIRECTOR OF PUBLIC WKS.**	Town Manager	Indefinite	Coordinates administration public facilities	Salary
TOWN ENGINEER	Town Manager	Indefinite	Survey street lines design public facilities	Salary
BUILDING INSPECTOR	Town Manager	Indefinite	Enforce building codes, zoning regulations	Salary
HIGHWAY SUPERINTENDENT	Town Manager	Indefinite	Maintain streets, sidewalks, curbs	Salary
SEWAGE TREATMENT SUPT	Town Manager	Indefinite	Maintain treatment facilities	Salary
SANITATION SUPT	Town Manager	Indefinite	Collection and disposition of refuse	Salary
BLDG. MAINTENANCE SUPT.	Town Manager	Indefinite	Care of public buildings and schools	Salary
PARK SUPERINTENDENT	Town Manager	Indefinite	Care of parks, street trees	Salary
DIRECTOR OF HEALTH	Town Manager	Indefinite	Protection of public health	Salary
DIRECTOR OF WELFARE	Town Manager	Indefinite	Administers the public welfare	Salary
HEALTH OFFICER	Town Manager	Indefinite	Administers public health program	Salary
SANITARIAN	Town Manager	Indefinite	Test foodstuffs, inspect eating places	Salary
RECREATION SUPERVISOR	Town Manager	Indefinite	Supervises public recreation program	Salary
TOWN ATTORNEY	Town Council	2 years	Handle all Town's legal affairs	Salary
COUNCIL CLERK	Town Council	2 years	Keep records of Council meetings	Salary
SUPT. OF SCHOOLS	Board of Education	Contract	Direct operation of public schools	Salary
LIBRARIAN	Library Board	Indefinite	Administer Town library facilities	Salary
HARBOR MASTER	Governor	3 years	Patrol river traffic	Salary
CIVIL DEFENSE DIRECTOR	Governor	Indefinite	Develop emergency procedures	Salary
HOUSING EXEC DIRECTOR	Housing Authority	Contract	Administer public housing	Salary
PLANNING ADMINISTRATOR	Planning & Zoning Comm.	Indefinite	Administer Town Plan	Salary
JUSTICES OF THE PEACE	Dem & Rep. Town Committees	4 years	Perform marriages, administer oaths, take depositions, notatize documents	Fee

\* 3 Year Contract Renewable for 5 years.

\*\*Duties may be carried out by Town Manager.

LEAGUE OF WOMEN VOTERS

**Purpose:** The League of Women Voters promotes political responsibility through informed and active participation of citizens in government and politics.

**Non-Partisanship:** The League, as an organization, neither supports nor opposes candidates running for office or the parties they represent. League members, as individuals, are encouraged to work actively for the candidates or party of their choice; however, officers and directors must refrain from political activity while in office.

**Membership:** Membership is open to anyone 18 years of age or older. Upon joining a local League, a member simultaneously becomes a member of the League of Women Voters of the United States and the League of Women Voters of Connecticut. On all three levels the League is a member organization: it is through the local League that members determine what the League does and how it does it.

**Voter Service:** Non-partisan voter service activities aim at informing citizens about candidates, ballot issues, the electoral process, and governmental structures and purposes. To that end, the League sponsors candidates nights, radio debates, publishes Voters Guides, provides information on registration, party enrollment and voting procedures, as well as other information when appropriate.

**Study and Action:** Matters of public concern ranging from local schools to foreign policy are studied in depth by the League. The goal is to have an informed stand on timely problems which can be dealt with through governmental action, then to lobby for that action. Ideas for program items always originate with the members. The local League adopts the local items, the LWV of Connecticut the state items, and the LWV of the United States the federal items.

**Policies:** The League takes action only on issues for which it has a position that was reached through a thorough study and consensus by the members. The League speaks and acts only through authorized channels; an individual member may not represent the League without prior board approval. As individuals, and without identifying themselves with the League, members are free, of course, to take any individual action they may choose, even if this action is contrary to a League position.

For further information: The League of Women Voters of the Bridgeport Area (Bridgeport, Stratford, Trumbull) Telephone: 335-6018