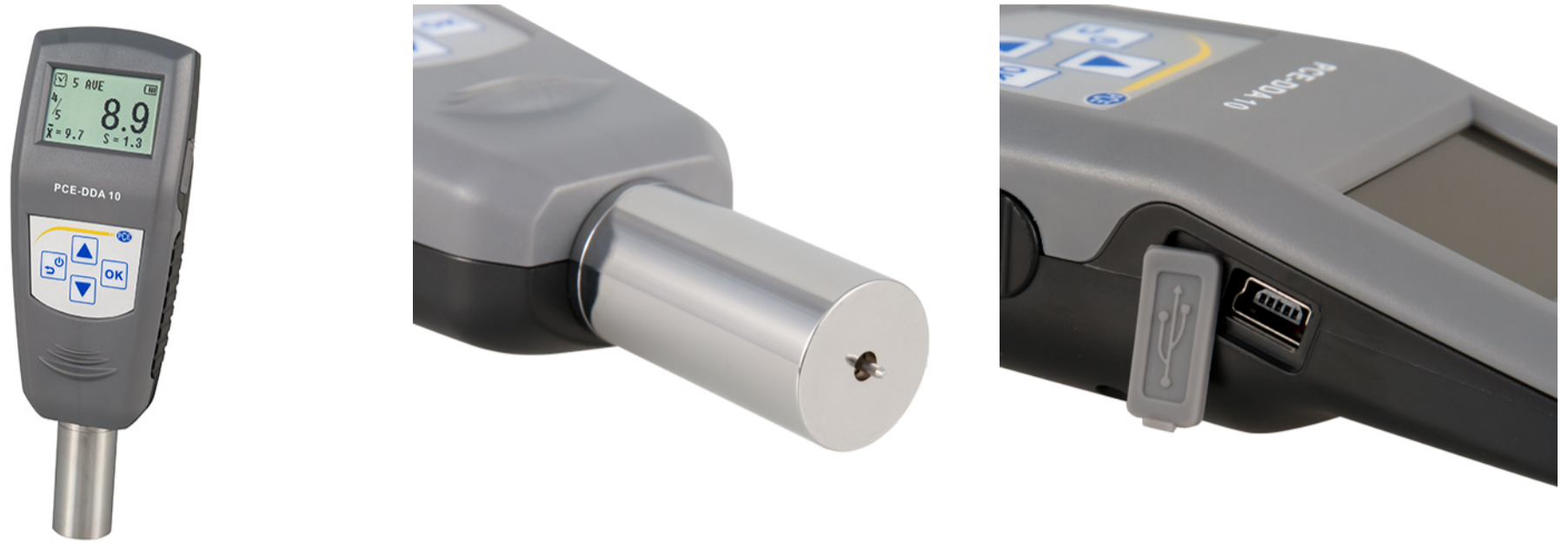


Durometer PCE-DDA 10 Shore A



PCE-DDA 10 Shore A Durometer

Measures Shore A hardness in soft gums, rubber and elastomers / Features a USB port and downloadable PC software for data transfer

The PCE-DDA 10 Shore A durometer is a portable handheld device used to check Shore A hardness in soft gums, elastomers, natural rubber, neoprenes, casting resin, white PVC, leather, etc. This digital durometer has a reading accuracy of 0.1 hardness units. The durometer comes manufacturer calibrated and can be optionally certified to ISO standards for an additional fee (see accessories for details).

- ▶ Portable handheld digital hardness testing device
- ▶ Measures Shore A hardness in soft gums, rubber and elastomers
- ▶ Features a USB port and downloadable PC software for data transfer
- ▶ Large, easy-to-read display
- ▶ For single and serial measurements

Specifications

Measurement range	0 ... 100 Shore A
Resolution	0.1
Accuracy	$< \pm 1$
Indenter	$35^\circ \pm 0.25^\circ$
Memory	Saves up to 500 measurements
Dimensions	153 x 50 x 29 mm / 6 x 1.9 x 1.1 in (main body)
Weight	Approx. 300 g / < 1 lb
Power supply	3.6V rechargeable Ni-MH battery
Max. operating time	Up to 20 h continuous use at full charge
Charging time	Approx. 3 h
Standards	GB/T 531.1, ISO 7619-1, ASTM D 2240

More information

Manual



Software Manual



More product info



Similar products



Subject to change