

- CONTRÔLEUR DE TERRE
- EARTHTESTER
- ERDUNGSPRÜFER
- STRUMENTO DI CONTROLLO DELLA TERRA
- CONTROLADOR DE TIERRA

# C.A 6423

FRANCAIS  
ENGLISH  
DEUTSCH  
ITALIANO  
ESPAÑOL

**Mode d'Emploi**  
**User's Manual**  
**Bedienungsanleitung**  
**Libretto d'Istruzioni**  
**Manual de Instrucciones**

 **CHAUVIN  
ARNOUX**

## English

Meaning of  symbol: **Warning!**  
**Consult the User's manual before using the instrument.**

You have just acquired an **Earth Tester** and we thank you for your confidence.

To get the best service from your instrument:

- **read** carefully this user's manual,
- **respect** the safety precautions in it,
- **stick** the label corresponding to your language on the back of the instrument.

## SAFETY IN USE

---

- Before connecting up the C.A 6423, check that no dangerous voltage is present at the earth to be measured.
- Before opening the battery compartment, ensure that no measurement lead is connected to the instrument.

## WARRANTY

---

Unless notified to the contrary, our instruments are guaranteed from any manufacturing defect or material defect. They do not bear the specification known as the safety specification. Our guarantee, which may not under any circumstances exceed the amount of the invoiced price, goes no further than the repair of our faulty equipment, carriage paid to our workshops. It is applicable for normal use of our instruments, and does not apply to damage or destruction caused, notably by error in mounting, mechanical accident, faulty maintenance, defective use, overload or excess voltage.

Our responsibility being strictly limited to the pure and simple replacement of the faulty parts of our equipment, the buyer expressly renounces any attempt to find us responsible for damages or losses caused directly or indirectly.

**Our guarantee is applicable for twelve (12) months after the date on which the equipment is made available.** The repair, modification or replacement of a part during the guarantee period will not result in this guarantee being extended.

## SUMMARY

---

	Page
1. PRESENTATION .....	16
2. DESCRIPTION .....	17
3. OPERATING MODE .....	18
3.1. Measurement of resistance of an earth point .....	18
3.2. Measurement of resistance .....	19
3.3. Fault signals .....	20
4. SPECIFICATIONS .....	21
5. MAINTENANCE .....	24
5.1. Normal cleaning .....	24
5.2. Calibration check .....	25
5.3. Repair .....	25
6. TO ORDER .....	26

## 1. PRESENTATION

---

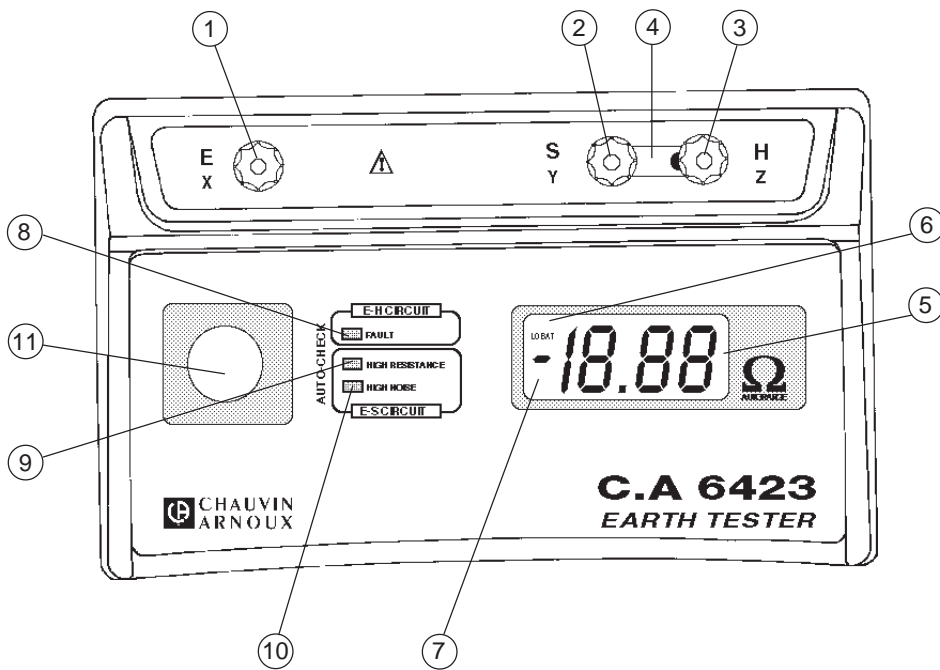
Autonomous and watertight, this tester is a worksite instrument designed for earth resistance measurements. It is particularly suited to measurements in difficult conditions such as when there are stray voltages present, high telluric currents, high value auxiliary electrode resistances, etc...

For ease of use, this instrument has the following features:

- a single press button to trigger the measurement
- an autoranging system for measurement range switching
- a large digital display which is readable even in shadow
- three indicators that signal the presence of faults which can lead to errors during measurement
- three colour coded screw terminals to simplify connection of leads
- an attached connection rod

## 2. DESCRIPTION

- ① Measurement input terminal E (green)
- ② Measurement input terminal S (blue)
- ③ Measurement input terminal H (red)
- ④ Attached rod S - H for 2 wire resistance measurement
- ⑤ 2000 count digital LCD
- ⑥ Low battery indicator
- ⑦ Reverse connection indicator
- ⑧ Current circuit fault indicator (E - H)
- ⑨ Voltage circuit fault indicator (E - S)
- ⑩ Indicator of presence of interference on voltage circuit (E - S)
- ⑪ Measurement press button



## 3. OPERATING MODE

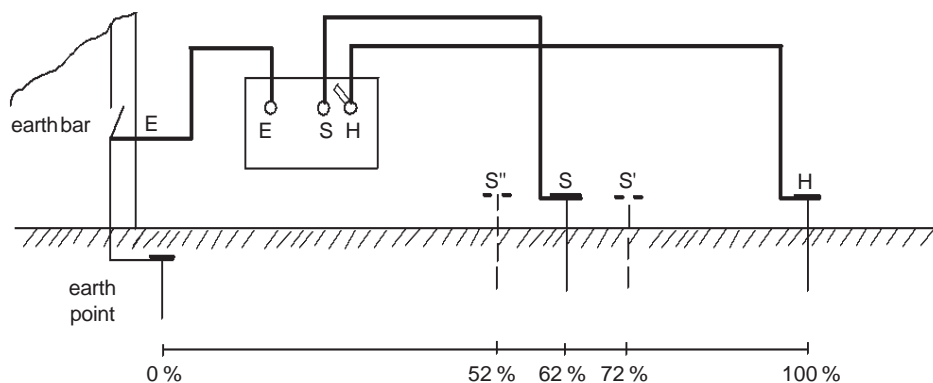
### 3.1 MEASUREMENT OF THE RESISTANCE OF AN EARTH POINT

To measure the resistance of an earth conductor, the so-called "62% method" is in general recommended. This measurement requires the use of the items in the Earth Kit (see Ch.6: TO ORDER).

**⚠ Cut the power supply to the installation and disconnect it from the earth by opening the earth bar!**

1. Connect terminal E to the earth to be measured.
2. Check that the bar ④ is not present between terminals S and H.
3. Drive in (completely if possible) the input earth rod H at a distance "a" from the earth point (E) to be measured.  
**Note:** this distance is further for a deep and extended earth point (larger range of influence).
4. Drive in the rod S at 62% of the distance between the earth E and the rod H (the rods S, H and the earth point must be in line).
5. Connect the rods to their respective terminals with the leads.
6. Press the "MEASURE" button ⑪ and hold the button during measurement. Check that none of the three indicators are flashing, otherwise, check the wiring (see Ch.3.4: FAULT SIGNALS) and make the measurement again.

#### Measurement of resistance of earth point



### Checking the measurement

7. Note the displayed value.
8. Wait for a few moments and then re-measure.
9. Move rod S by 10% towards H, along the line between the earth point E and the rod H. Measure and note the result.
10. From its initial position, move rod S by 10% towards E, along the line between the earth point E and the rod H.

If the three values are of the same order of magnitude, the earth measurement is correct. If not, increase the distance "a" and repeat the measurements.



**Do not forget to reconnect the earth point after the measurement.**

## 3.2 MEASUREMENT OF RESISTANCE

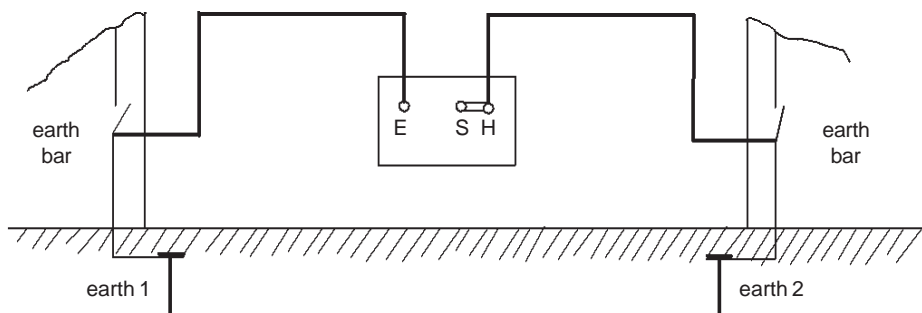
This measurement can be performed to determine the coupling resistance between two earth points. For example, between the neutral and ground earth points (EDF distribution).



**Cut the power supply of the installations. For measurement of the coupling resistance, disconnect the earths!**

1. Short-circuit terminals S and H using the bar provided (4).
2. Connect terminal E to the earth of the ground, and terminal H to the earth of the neutral.
3. Press the "MEASURE" button (1) and hold down until the measurement is displayed. Check that none of the three indicators are flashing, otherwise check the connections (see Ch.3.4: FAULT SIGNALS) and repeat the measurements.

### 2-wire resistance measurement



**NB:** In the case of low value resistances, it becomes necessary to take into account the resistance of the leads (approx. 22.5 mΩ/m for those supplied as accessories). To overcome the resistance of the leads, we advise the use of a (4 pole) Earth/Resistivity Tester, on 4-wire connection.



**Do not forget to reconnect the earth points after measurement.**

### 3.3 FAULT SIGNALS

- Display of a negative measurement

Reversal of rods H and E or rods S and E  
*Re-connect the leads correctly*

- Displayed measurement value is 1---

Overrange ( $R > 2000 \Omega$ )  
*Check the connections*

- Flashing of **FAULT** light (8)

Fault in current circuit (E - H). Flashing indicates that the voltage between the terminals E and H is greater than  $30 V_{peak}$ .  
This may mean that:

- the resistance of the current circuit between E and H is too high,
- the interference voltage in the circuit (E - H) is too high,
- the fuse is blown.

*Check the rods, the leads, the connections and the fuse (see Ch.5.1.3).*

- Flashing of **HIGH RESISTANCE** indicator (9)

Fault in the voltage circuit (E - S). At the start of the measurement, the instrument automatically checks the resistance between E and S. If this is greater than 50 kΩ, the indicator (9) begins to flash. This means that the measurement is likely to be very affected by the resistance of the voltage circuit.

**NB:** The indicator flashes throughout the measurement, even if the resistance falls below 50 kΩ during it.

*Check the rods, the leads and their connections.*

- Flashing of **HIGH NOISE** indicator (10)

Presence of interference voltages in the voltage circuit. Flashing indicates noise greater than  $13 V_{peak}$  between terminals E and S. These interference signals disturb the measurement.  
*Move the rods.*

## 4. SPECIFICATIONS

REFERENCE CONDITIONS	
Temperature	23°C ± 3 K
Relative humidity	45% < RH < 55%
Supply voltage	10.5 V ± 0.2 V
Auxiliary resistances R <sub>H</sub> , R <sub>S</sub> and R <sub>E</sub>	nil
AC and DC interference voltages	nil
Electric field	< 1 V/m
Magnetic field	< 40 A/m

METROLOGICAL SPECIFICATIONS				
Measurement range (automatic range)	Resolution	Measurement current (square signal 128 Hz)	Accuracy	Empty voltage
0.00...19.99 Ω	0.01 Ω	10 mA	± 2%rdg ± 1 pt	≤ 42 V <sub>peak</sub>
20.00...199.9 Ω	0.1 Ω	1 mA	± 2%rdg ± 1 pt	≤ 42 V <sub>peak</sub>
200.0...1999 Ω	1 Ω	100 μA	± 2%rdg ± 3 pt	≤ 42 V <sub>peak</sub>
Response time	between 4 and 8 s depending on measurement conditions			

DISTORTION QUANTITIES			
		Operating limits	Max variation
Temperature		-10...+55°C	± (1% rdg ± 1 pt) per 10°C
Relative humidity		20...90%	± 2% rdg ± 5 pt
Operating voltage		8.8...12.5 V	± (1% rdg ± 1 pt) per Volt
Voltage circuit load (1)		50 kΩ	± 1% rdg per 10 kΩ ± 4 pt
Current circuit load (2)	0.00...19.99 Ω	30 kΩ	± 1% rdg per 10 kΩ ± 2 pt
	20.00...199.9 Ω	30 kΩ	± 1% rdg per 10 kΩ ± 2 pt
	200.0...1999 Ω	50 kΩ	± 1% rdg per 10 kΩ ± 2 pt
DC voltage		0...20 V (3)	negligeable
AC interference voltages on H		0...23 V <sub>rms</sub> or 32 V <sub>peak</sub>	± 2% rdg ± 2 pt
AC interference voltages on S		0...9 V <sub>rms</sub> or 13 V <sub>peak</sub>	± 0.5% rdg ± 2 pt

- (1) Resistance measured or resistance of rod E + resistance of rod S + resistance of leads  
 (2) Resistance measured or resistance of rod E + resistance of rod H + resistance of leads  
 (3) Possible flashing of HIGH RESISTANCE indicator above 4.5 V

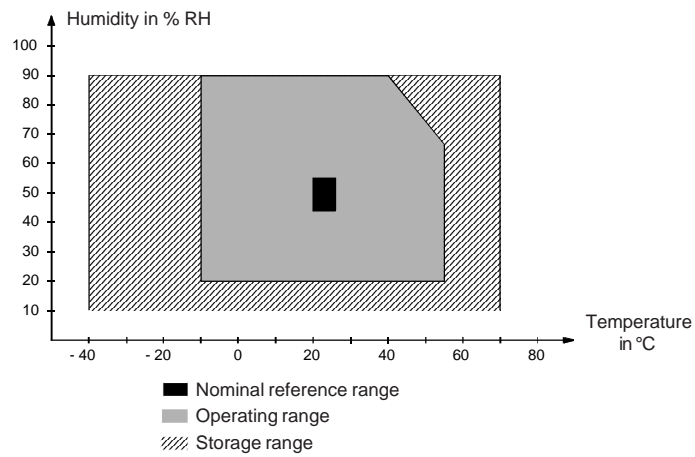


<b>ELECTRICAL SPECIFICATIONS</b>	
Power supply	8 batteries R6 alkaline 1.5 V or 8 accumulators
Range of voltage permitted	8.8...12.5 V
Average battery life	1800 measurements of 15 seconds (at 23°C ± 3 K, with 8 alkaline batteries) permanent test of remaining battery life.

<b>DISPLAY</b>	
Display	LCD, 7 segments, height 18 mm, 2000 counts (3½ digits), direct reading in Ω
Low battery indicator	"LO BAT" message
Overload indicator	display of 1 ---
Indicator of lead reversal	- sign preceding the measurement
Indicator of current circuit fault	by flashing red FAULT (E -H) LED
Indicator of voltage circuit fault ■ Resistance too high ■ Interference noise	by flashing red HIGH RESISTANCE (E - S) LED by flashing red HIGH NOISE (E - S) LED

<b>MECHANICAL SPECIFICATIONS</b>	
Protection index	IP 54 in accordance with IEC 529 and NF EN 60 529
Free drop	25 cm in accordance with IEC 68-2-32
Shock resistance	50 $g_n$ ( $g_n = 9.81 \text{ m/s}^2$ ) in accordance with IEC 68.2.27
Resistance to impacts	IK 04 in accordance with NF EN 50 102
Vibration resistance	± 1 mm, from 10 to 55 Hz in accordance with IEC 68.2.6
Dimensions (W x H x D)	238 x 136 x 150 mm
Connection of leads	on 3 colour coded terminals for φ 4 mm banana plugs or 6 mm spade clips

## CLIMATIC CONDITIONS



## CONFORMITY WITH STANDARDS

### Electrical safety (in accordance with IEC 1010-1)

- Double insulation
- Installation category III
- Degree of pollution 2
- Service voltage  $42 V_{peak}$

### Electromagnetic compatibility

- Emission (in accordance with EN 50081-1)
- Immunity (in accordance with EN 50082-1)

## 5. MAINTENANCE

---



**For maintenance, use only specified spare parts. The manufacturer will not be held responsible for any accident occurring following a repair done other than by its after sales service or approved repairers.**

### 5.1 NORMAL CLEANING

#### 5.1.1 Cleaning

Preferably use a damp cloth or a sponge slightly moistened with soapy water. Do not use alcohol, petrol or other products based on hydrocarbons.

#### 5.1.2 Replacing batteries or accumulators

The test of remaining battery life is automatic and permanent. At the first appearance of the "LO BAT" message, the instrument still has sufficient power for a few measurements. The batteries must be changed within a short time.



**Before changing the batteries, ensure that no lead is connected to the instrument. All the batteries must be replaced at the same time. Do not mix together batteries and accumulators.**

Undo the attached screws located under the instrument which give access to the battery compartment. Replace the 8 used batteries by 8 new ones of the same type, according to the polarity. Refit the cover of the battery compartment.

#### 5.1.3 Replacing the fuse

The indicator may be flashing because the fuse protecting the current circuit has blown. To check, short-circuit terminals E and H (with bar ④ open and the measurement leads disconnected). If the FAULT light still flashes, the fuse must be changed. To do this, remove the cover of the battery compartment, unscrew the fuse holder and pull out the fuse. Replace it with a new one of the same type (0.1 A - 250 V). Refit the battery cover.

#### 5.1.4 Storage

In case of prolonged non-use, remove the batteries from their compartment. Store the instrument only in the specified environmental conditions (see Ch. 4: SPECIFICATIONS).

## **5.2 CALIBRATION CHECK**

It is essential that all measuring instruments are regularly calibrated.

For occasional daily use, we recommend that an annual calibration be carried out.

When the instrument is used continuously every day, we recommend that calibration is carried out every 6 months.

For calibration and repair of your instrument, please contact our COFRAC-BNM accredited laboratories :

- CHAUVIN ARNOUX Pont l'Evêque- France : (33) 31 64 51 11

- MANUMESURE Lyon - France : (33) 78 26 68 04

Or the CHAUVIN ARNOUX subsidiary or Agent in your country

## **5.3 REPAIR**

Repairs under or out of guarantee: Please return the product to your distributor.

## 6. TO ORDER

---

- **C.A 6423 EARTH TESTER** ..... ref. P01.1270.13  
supplied with batteries, carrying strap and User's manual

### **Accessory for C.A 6423:**

- Shoulder bag ..... ref. P01.2980.06

### **Spares for C.A 6423:**

- Carrying strap ..... ref. P01.2980.05
- HBC fuse 0.1 A - 250 V (pack of 10) ..... ref. P01.2970.12
- Battery 1.5 V alkaline LR6 (pack of 8) ..... ref. P01.1007.74

### **Measurement accessories:**

- **PRESTIGE EARTH ACCESSORIES Kit** ..... ref. P01.1018.24

Semi-rigid bag comprising:  
- two T shaped smooth rods  
- 100 m of red lead on reel  
- 60 m of blue lead on reel  
- 10 m of green lead on reel  
- ground of 1 kg

### **Spares for measurement accessories:**

- Semi-rigid bag ..... ref. P01.2980.26
- Smooth T shaped rod ..... ref. P01.1018.29
- 100 m red lead on reel ..... ref. P01.2950.45
- 60 m blue lead on reel ..... ref. P01.2950.44
- 10 m green lead on reel ..... ref. P01.2950.41