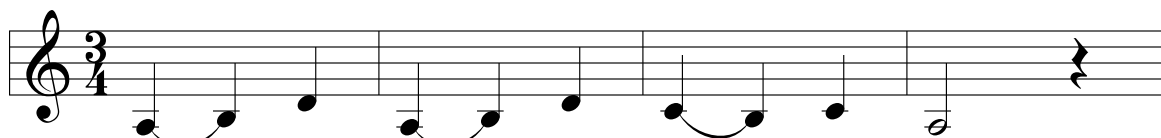
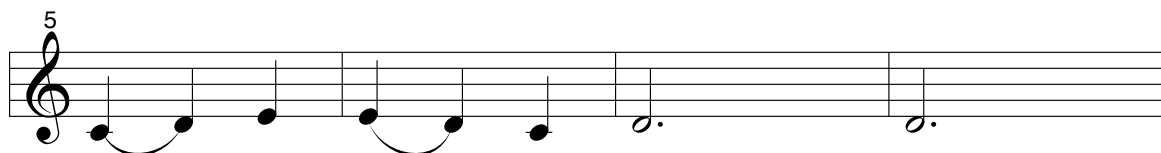


# a Spring song: In vernali tempore

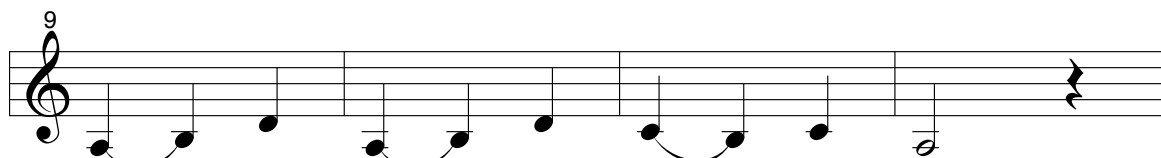
Piae Cantiones 1582



1. In — ver - na - li tem - po - re,  
2. Ter - ra ver - nat flo - ri - bus  
3. O — quam mi - ra glo - ri - a,



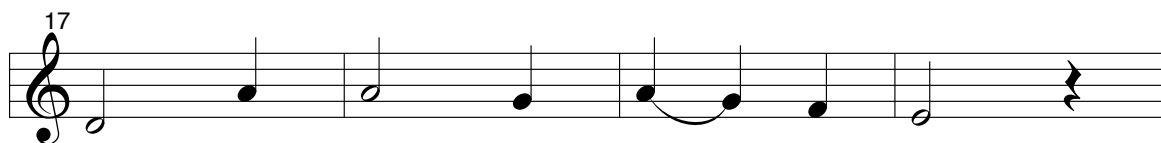
or - tu lae - ta - bun - do,  
et — ne - mus — vi - o - re,  
quan - tus de - cor De - i,



Dum — re - ce - dunt fri - go - ra  
A - ves mul - cent can - ti - bus  
Quan - ta re - splen - den - ti - a

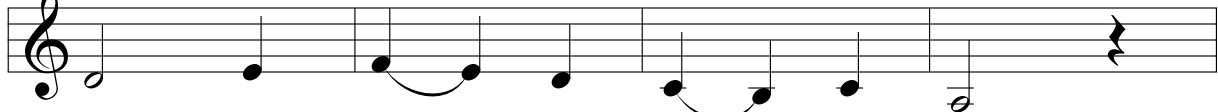


nun - ci - at — hi - run - do,  
et — vo - cis — dul - co - re,  
su - ae fa - ci - e - i,



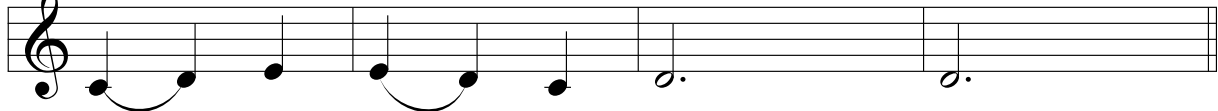
Ter - rae, ma - ris, ne - mor - ris  
A - qua tem - pes - ta - ti - bus  
A quo du - cunt om - ni - a,

21




de - cus ad - est de - for - is,  
 ca - ret a - ãr im - bri - bus,  
 i - ma, sum - ma, me - di - a,

25



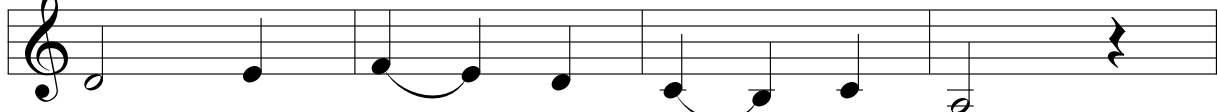
re - no - va - to mun - do.  
 Dul - ci ple - nus ro - re.  
 For - mam spe - ci - e - i.

29



Vi - gor re - dit cor - po - ris,  
 Sol con - sum - tis nu - bi - bus,  
 Mai - or est dis - tan - ti - a,

33



ce - dit do - lor pec - to - ris,  
 ra - di - is pa - ten - ti - bus  
 quam sit dif - fer - en - ti - a

37



tem - po - re iu - cun - do.  
 Lu - cet cum dul - co - re.  
 Noc - tis et di - e - i.

source: Piae Cantiones 1582. Facsimile, Edition Fazer 1967, p196-7

Original pitch. Note values are halved from the original.

The text underlay in the original is for the first verse only.

The underlay for the subsequent verses is speculative.