

**MUNBYN**

**Focus on  
Every Powerful Moment**

**MUNBYN**

Logistics Label Printer

# **USER GUIDE**



## CONTENTS

---

Product Introduction .....	1
Quick Printer Installation .....	2
Label Setup .....	3
Driver Installation .....	4
Windows Driver Installation .....	4
Mac Driver Installation .....	10
“FEED” Button Instruction .....	12
LED Status .....	12
FAQ .....	12
Specifications .....	15
Support .....	15

## PRODUCT INTRODUCTION

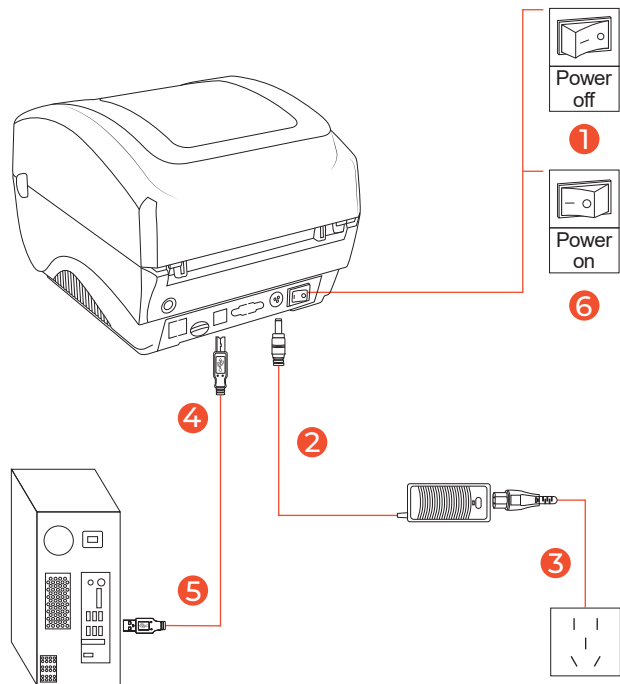
---

### What's in the box?



- |                 |                   |                 |               |
|-----------------|-------------------|-----------------|---------------|
| 1 Printer       | 2 Power Cable     | 3 USB Cable     | 4 Labels      |
| 5 Power Adapter | 6 After-sale card | 7 U flash Drive | 8 User Manual |

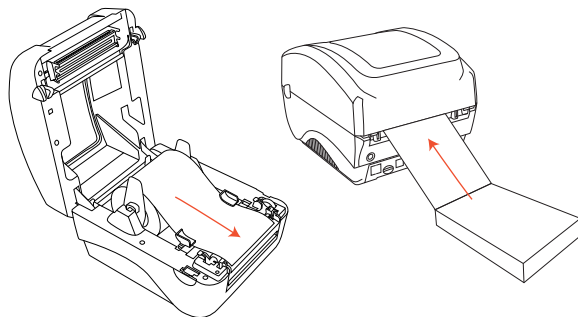
## QUICK PRINTER INSTALLATION



**Note:** Please use the power adapter provided by MUNBYN.

## LABEL SETUP

- 1 Facing the front of the printer, press the cover open button to open the top cover.
- 2 Install the label paper with the holders on both sides.
- 3 Finish the label paper installation, and then close the cover.
- 4 For new label paper, do the label size calibration again.



**Note:** Before using the printer to print labels, please calibrate the paper size.

### Label size calibration:

1. Turn on the printer.
2. Press FEED button and hold on.
3. Release the button when you hear one beep sound.
4. Then, the printer will calibrate the label size.

## DRIVER INSTALLATION

Support downloading driver files via USB flash drive or download link.

Printer driver download link: <https://munbyn.biz/988d>

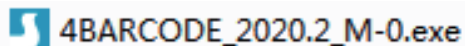
### Warning

Printer head (TPH) will be very hot after printing,  
Please do not touch the printer head or parts around it .

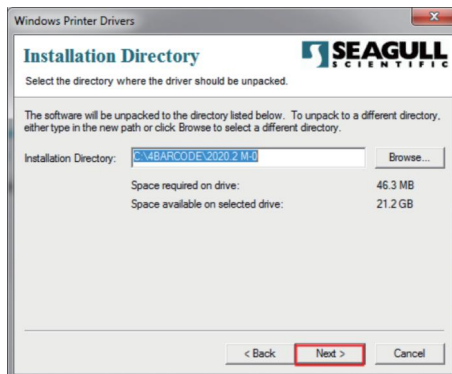
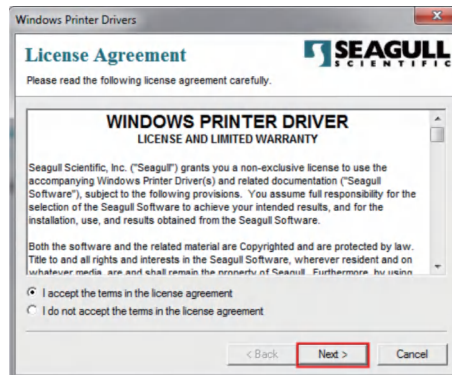
## WINDOWS DRIVER INSTALLATION

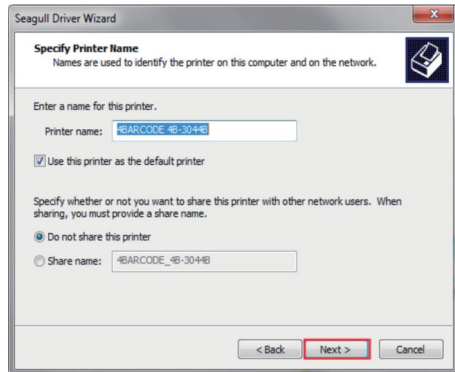
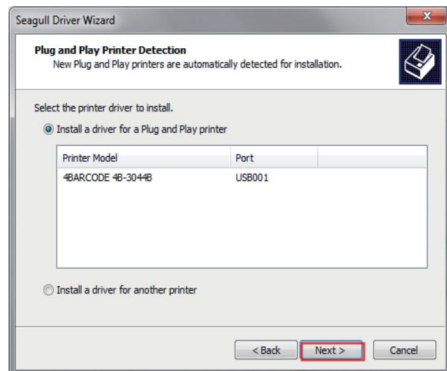
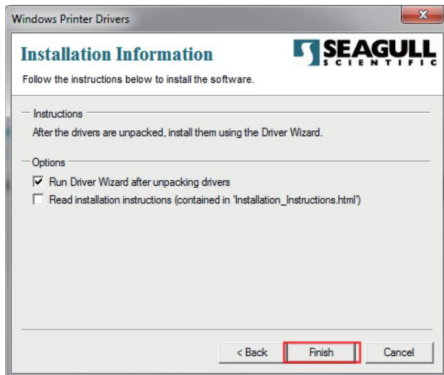
**Note:** Please connect to the computer first and then turn on the printer.

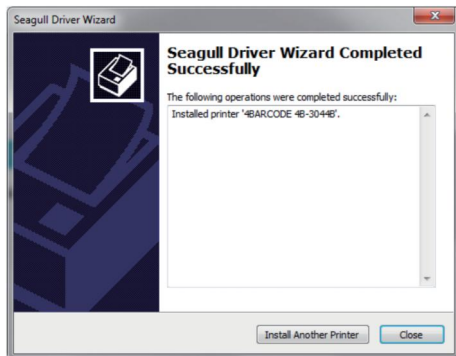
1.Open the driver file you downloaded.



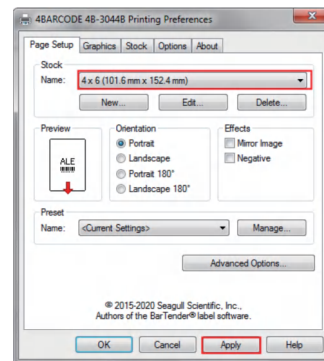
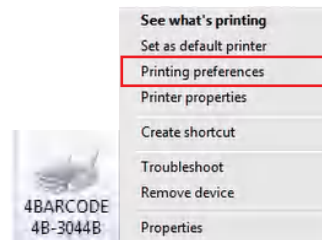
2.Follow the instruction to install the driver.







3. Check the printer Page Setup (4 in×6 in) in Printing preferences



**Note:** If the USB interface cannot be recognized during the installation process, please restart the printer.

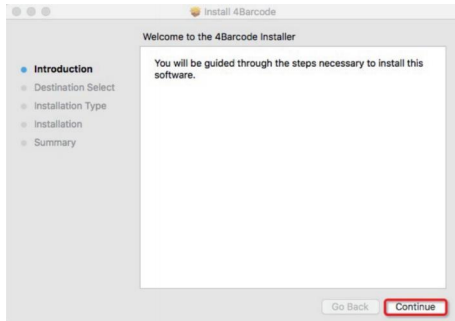
# MAC DRIVER INSTALLATION

**Note:** Please connect to the computer first and then turn on the printer.

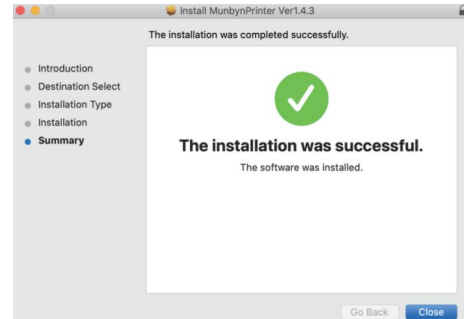
1. Open the driver software you downloaded.



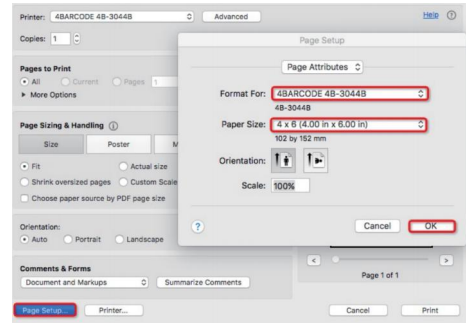
2. Start installation.



3. Follow the guideline to install until "The installation was successful" appears.



4. Page Setup, choose 4x6" (100x150 mm), then we can open the document and select the printer to print shipping labels.



## “FEED” BUTTON INSTRUCTION

---

Printer status	Operation of FEED	Function
Standby	Short press the button(light)	Feed in a blank paper
Standby	Long press the button(light) until beep once	Automatically calibrate paper size
Standby	Long press the button(light) until beep twice	Print out Self-test page
Standby	Long press the button(light) until beep five times	Reset printer

## LED STATUS

---

Description	LED indicator
Power on, waiting for printing instructions	Blue light
The printer is downloading data or paused	Blue light flashing
The printer is clearing data	Purple light
The cover is open	Red light
Printing errors, such as: out of paper paper jam, or memory error, etc.	Red light flashing

## FAQ

---

**Q1: When the printing is too faint, how to adjust the density and printing speed?**

**A1:** For Windows : Printer Preferences → Options → Setting;  
For Mac OS: Can be set in drop-down menu under 'Printer Features'

**Q2: What can I do if paper is jammed or there are white spots in my print?**

**A2:** Turn off the printer, and allow the printer head to cool down. Use the pad with alcohol to wipe the printer head clean.

**Q3: Why the printer print extra blank labels after the one successful print?**

**A3:** Please check if the paper size setting of the printer is correct, and adjust the scale and margins in preview page or page setup when you are printing from browser.

**Q4: Why I am printing blank labels?**

**A4:** Make sure your labels are 'Direct Thermal' labels and the label that you peel off should be facing the ceiling when it comes out of the printer. If it still does not work, reinstall the driver.

**Q5: How can we print the label that is not in standard 4\*6 size, such as the USPS?**

**A5:** You can use the adobe reader software to open the file, click on "edit", choose "take a snapshot" and then click on "print".



**Q6: How to print self-test label?**

**A6:** The self-test label can be used to determine whether the machine is malfunctioning and whether the printing performance is good. You can print self-test label as follows.

1. Turn on the printer.
2. Press FEED button and hold on.
3. Release the button when you hear two beep sound.

## SPECIFICATIONS

---

Method	Direct Thermal
Resolution	300 DPI
Max Printing Speed	106mm/s
Paper Width	104mm
Paper Thickness	0.06-0.25mm
Power Adapter	24V/2.5A
Printing Life	TPH 30 Km
Connection	USB

## SUPPORT

---

**Need Tech Support, contact us by:**



**E-mail:** [support@munbyn.com](mailto:support@munbyn.com)

**Whatsapp:** +8617817881067

**Skype:** munbyn

**Support time:**  
Monday to Friday 24 hours.