



BRD6202APB/BRD6204APB/BRD6204ADC FnL Monitor Software Installation Guide (Windows)

Version 1.00

Copyright © 2021 HighPoint Technologies, Inc.

All rights reserved

Contents

BRD6202APB/BRD6204APB/BRD6204ADC FnL Monitor Software Installation Guide	1
Prerequisites for a Data-RAID Configuration	1
Installing the FnL Monitor Software (WebGUI & CLI).....	2
Uninstalling the FnL Monitor Software (WEBGUI & CLI).....	3
Troubleshooting	4
The WebGUI will not start after double-clicking the desktop icon.	4

BRD6202APB/BRD6204APB/BRD6204ADC FnL Monitor Software Installation Guide

This guide includes important hardware/software requirements, installation procedures, and troubleshooting tips for using BRD6202APB/BRD6204APB/BRD6204ADC NVMe AIC RAID Drive with a Windows operating system.

Prerequisites

This section describes the base hardware and software requirements for the BRD6202APB/BRD6204APB/BRD6204ADC PCIe 3.0 NVMe AIC RAID Drive.

Management Software Installation

This section explains how to download and install the BRD6202APB/BRD6204APB/BRD6204ADC FnL Monitor Software Suite for Windows operating systems. The download includes both the Web RAID Monitor Interface (WebGUI), and the CLI (Command Line Interface).

Troubleshooting

Please consult this section if you encounter any difficulties installing or using the BRD6202APB/BRD6204APB/BRD6204ADC NVMe AIC RAID Drive. It includes descriptions and solutions for commonly reported technical issues.

Prerequisites for a Data-RAID Configuration

The BRD6202A /BRD6204A AIC RAID Drive can support Data-RAID arrays. In order to configure a Data-RAID array, you will need the following:

1. **A PCIe 3.0/4.0 slot with x8 or x16 lanes.**
2. **Make sure any HighPoint NVMe drivers are uninstalled.** It may be preventing the BRD6200A from functioning properly.

Installing the FnL Monitor Software (WebGUI & CLI)

This guide provides an overview of the Web-RAID Management graphical user interface, also known as the WebGUI. The WebGUI is an intuitive, yet comprehensive management tool designed for users of any experience level.

Download the latest software package from the HighPoint website:

BRD6204APB:

<https://www.fnlnvme.com/brd6204apb-overview>

BRD6202APB:

<https://www.fnlnvme.com/brd6202apb-overview>

BRD6204ADC:

<https://www.fnlnvme.com/brd6204adc-overview>

1. Extract the package and double-click the FnL Monitor program to install the software.
2. Once installed, locate the Management icon on the desktop and double-click to start the WebGUI interface.

Example screenshot (BRD6204APB)

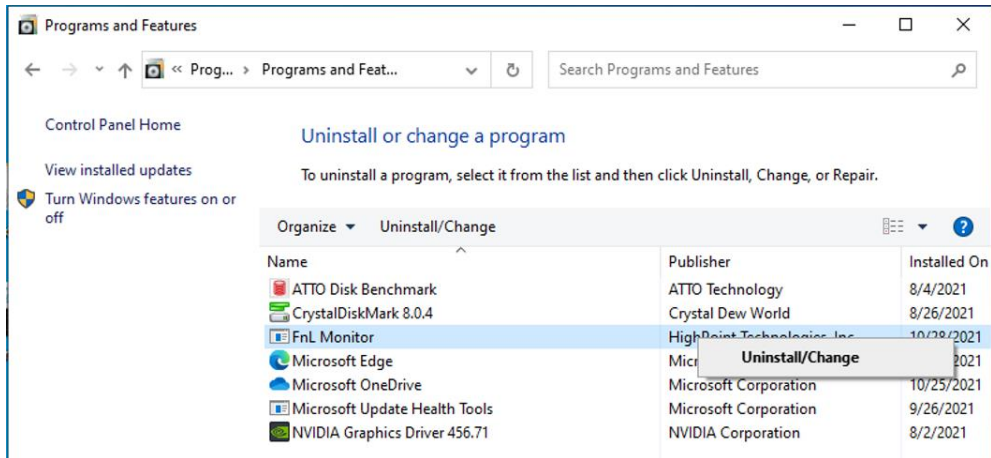
The screenshot displays the WebGUI interface for the FnL AIC RAID Drive. The top navigation bar includes tabs for "AIC RAID Drive", "Device Info", "Settings", "Event Log", "SHI", and "Help". The main content area is divided into two sections:

- Device Information:** A table listing the following details:

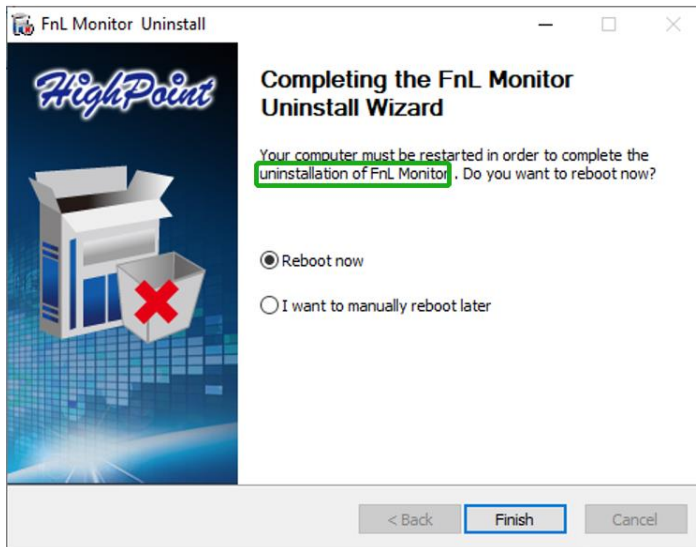
Model:	FnL BRD6204APB
Serial Number:	2110H3E000030
Location:	01:00.00
Current Link Width:	x8
Max Link Speed:	8 Gb/s
- RAID and Temperature Status:** A visual representation of the RAID controller and drive array. Below the image, it shows "RAID Level: 0" and "Temperature Status: ●". At the bottom, an orange bar indicates "3500 GB Used".

Uninstalling the FnL Monitor Software (WEBGUI & CLI)

1. Access **Control Panel** and select **Programs**→ **Programs and Features**, and right-click on the FnL Monitor entry.
2. Click **Uninstall/Change**



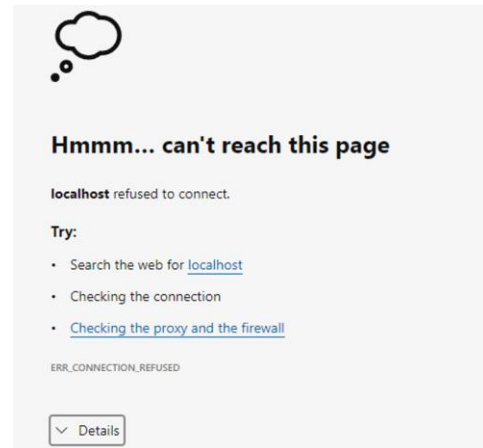
3. After uninstalling the FnL Monitor, click **Finish**.



Troubleshooting

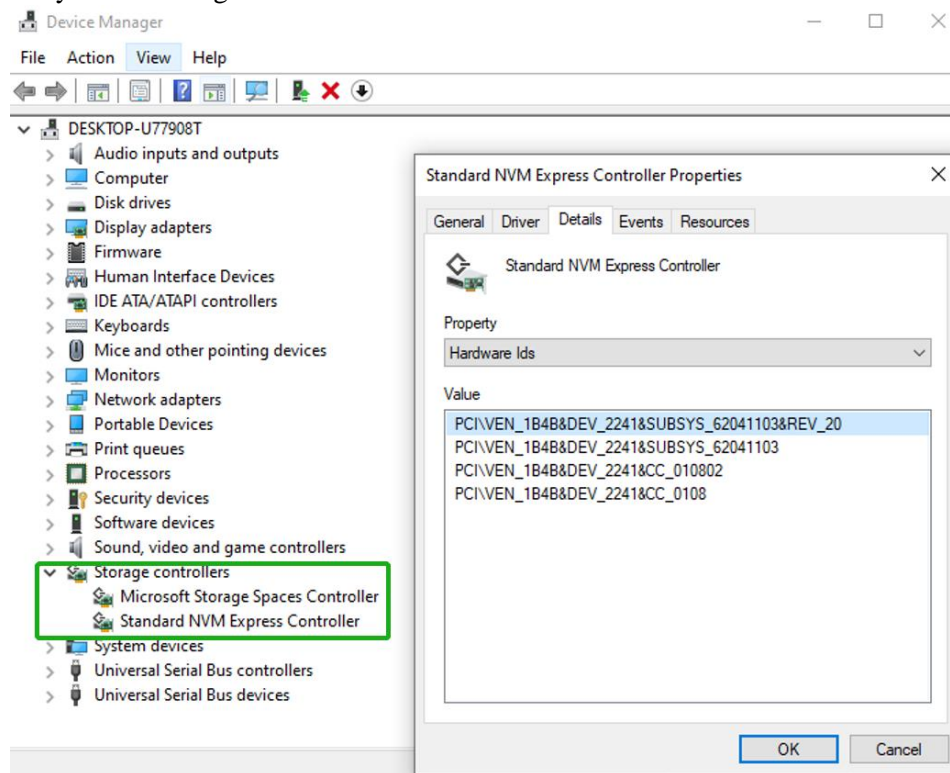
Note: When troubleshooting your BRD6202A/6204A AIC RAID Drive, make sure all of the Prerequisites have been met before proceeding.

The WebGUI will not start after double-clicking the desktop icon.



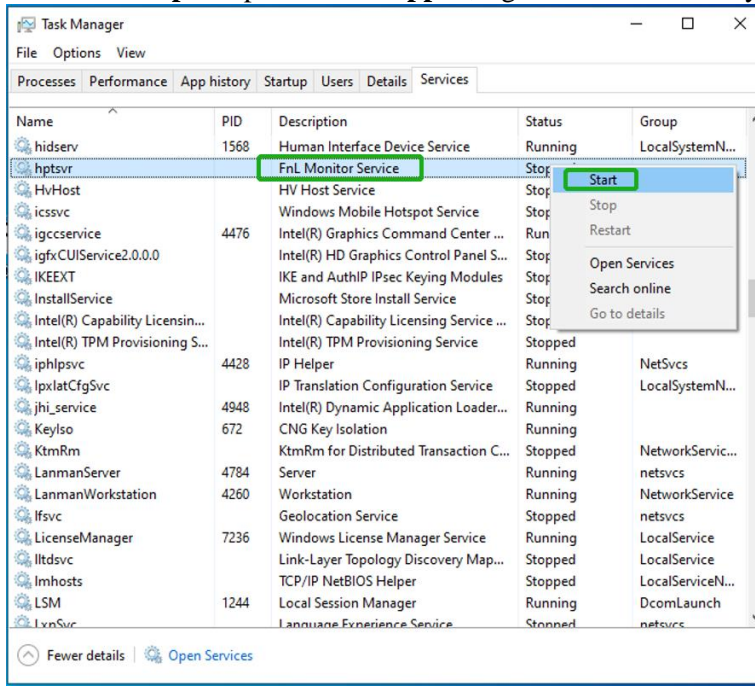
1. This is often the result of a missing driver or improperly installed driver. Open **Device Manager** and check under **Storage Controllers**.

If the hardware is properly installed, you should see a **Standard NVMe Express Controller** entry under Storage controllers



If the interface does not display “Standard NVMe Express Controller”, then the motherboard does not recognize the BRD6200 AIC RAID Drive.

- a. Power down the system, and make sure the BRD6200 AIC RAID Drive is securely installed into the PCIe slot.
2. You should also check to make sure **hptsvr** is running under **Task Management** → **Services**. If the status of **hptsvr** process is **Stopped**, right-click on this entry and select Start from the menu:



If you experience any other WebGUI or CLI related problems, please submit a support ticket using our [Online Support Portal](#), which includes a description of the problem in as much detail as possible, and upload the following: