

HighPoint

RocketU 1488C

PCIe 3.0 to 8-Port USB-C 3.2 20Gb/s HBA



Quick Installation Guide

V1.00

Table of Contents

Introducing the HighPoint RocketU 1488C.....	2
Kit Contents	2
System Requirement.....	2
Board Layout.....	3
Installing the RocketU 1488C Host Adapter	4
Driver Installation	5
Verifying Installation (Windows).....	6
Verifying Installation (Linux)	7
Connecting USB Storage Devices	7
FCC Part 15 Class B Radio Frequency Interference statement	8
Customer Support.....	9

Introducing the HighPoint RocketU 1488C

The RocketU 1488C is a 16-lane USB-C 3.2 20Gb/s PCIe 3.0 x16 host adapter. It can be easily installed into any x16 slot, and is natively supported by the latest versions of Windows and Linux distributions.

Backwards Compatible with USB 3.2 Gen2, USB 3.2 Gen1, USB 2.0 Devices

RocketU 1488C controllers can be installed into any computing platform with an industry-standard PCIe 3.0 or 4.0 x16 slot. The four independent USB Type-C ports support any industry-standard USB 2.0, USB 3.2 Gen1, USB 3.2 Gen2 device, including USB hard drives and SSD's, cameras, printers, capture devices and peripherals.

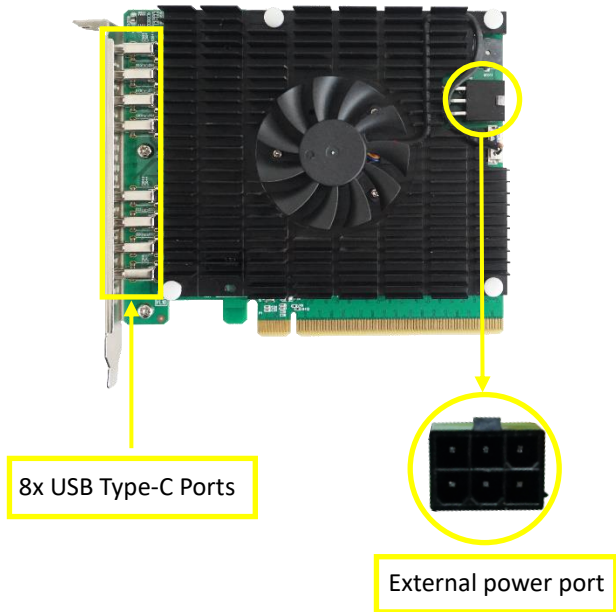
Kit Contents

- RocketU 1488C host controller
- Quick Installation Guide

System Requirement

- PC with Windows 8.1 and later
- Linux 3.10.0 and later

Board Layout



Installing the RocketU 1488C Host Adapter

Note: Make sure the system is powered-off before installing the host adapter.

1. Open the system chassis and locate an unused PCI-Express x16 slot.

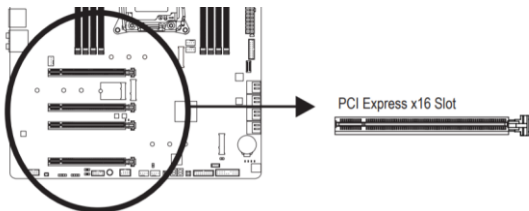
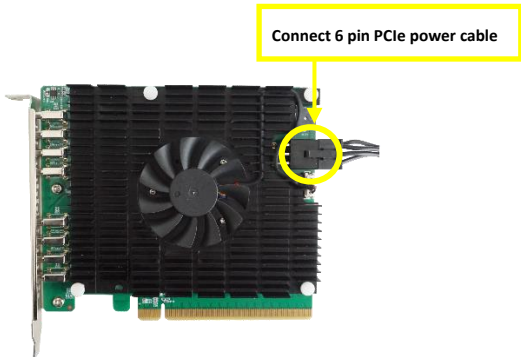


Figure 1 - PCIe x16 slot diagram

2. Gently insert the RocketU 1488C into the PCI-Express slot, and secure the bracket to the system chassis.
3. After installing the adapter, attach the USB device with USB cables.
4. Power up the USB Device external power supply.

Note: If the external power supply is not powered on, the USB Device may drop offline or remain undetected, which could lead to data loss.



RU1488C relies on two power sources to support eight USB Devices, power supplied through the PCIe bus, and power from the system's PSU via an external power cable. If the external cable is not connected, there will be insufficient power to support all 8 USB Devices, this may cause the USB Device to drop offline.

5. Close and secure the system chassis.

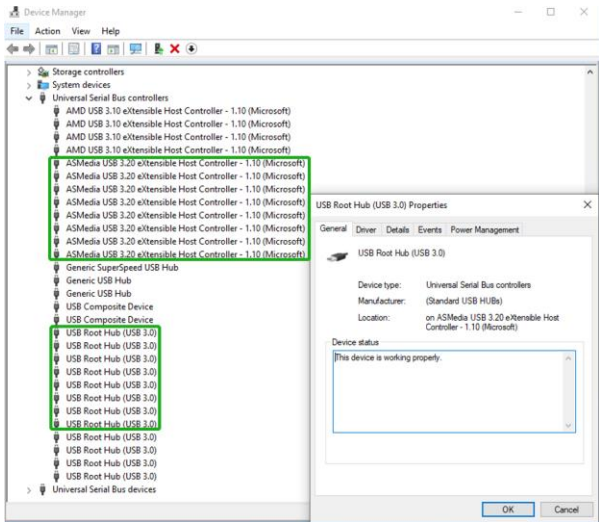
Driver Installation

Windows Platforms: The RocketU 1488C is natively supported by Windows 8 and later (no driver installation is required).

Linux: The RocketU 1488C is natively supported by Linux 3.10.0 and later (no driver installation is required).

Verifying Installation (Windows)

1. Open Device Manager.
2. Expand the '**Universal Serial Bus Controllers**' entry.
3. If the driver is installed properly, four "ASMedia USB 3.20 eXtensible Host Controller" and four "USB Root Hub" entry should be displayed.



Verifying Installation (Linux)

1. Open terminal and enter the following command:
lspci
2. If the driver is installed properly, four “ASMedia Device 3242” entry should be displayed.

```
01:00.0 PCI bridge: PLX Technology, Inc. Device 8749 (rev ca)
01:00.1 System peripheral: PLX Technology, Inc. Device 87d0 (rev ca)
01:00.2 System peripheral: PLX Technology, Inc. Device 87d0 (rev ca)
01:00.3 System peripheral: PLX Technology, Inc. Device 87d0 (rev ca)
01:00.4 System peripheral: PLX Technology, Inc. Device 87d0 (rev ca)
02:00.0 PCI bridge: PLX Technology, Inc. Device 8749 (rev ca)
02:00.0 PCI bridge: PLX Technology, Inc. Device 8749 (rev ca)
02:0a.0 PCI bridge: PLX Technology, Inc. Device 8749 (rev ca)
02:0b.0 PCI bridge: PLX Technology, Inc. Device 8749 (rev ca)
02:10.0 PCI bridge: PLX Technology, Inc. Device 8749 (rev ca)
02:11.0 PCI bridge: PLX Technology, Inc. Device 8749 (rev ca)
02:12.0 PCI bridge: PLX Technology, Inc. Device 8749 (rev ca)
02:13.0 PCI bridge: PLX Technology, Inc. Device 8749 (rev ca)
03:00.0 USB controller: ASMedia Technology Inc. ASM3242 USB 3.2 Host Controller
04:00.0 USB controller: ASMedia Technology Inc. ASM3242 USB 3.2 Host Controller
05:00.0 USB controller: ASMedia Technology Inc. ASM3242 USB 3.2 Host Controller
06:00.0 USB controller: ASMedia Technology Inc. ASM3242 USB 3.2 Host Controller
07:00.0 USB controller: ASMedia Technology Inc. ASM3242 USB 3.2 Host Controller
08:00.0 USB controller: ASMedia Technology Inc. ASM3242 USB 3.2 Host Controller
09:00.0 USB controller: ASMedia Technology Inc. ASM3242 USB 3.2 Host Controller
0a:00.0 USB controller: ASMedia Technology Inc. ASM3242 USB 3.2 Host Controller
0b:00.0 Non-Essential Instrumentation [1300]: Advanced Micro Devices, Inc. [AMD] Starship/Matisse PCIe Dummy Function
0c:00.0 Non-Essential Instrumentation [1300]: Advanced Micro Devices, Inc. [AMD] Starship/Matisse Reserved SPP
```

Connecting USB Storage Devices

1. Power on the system.
2. Connect the USB device to the HighPoint RocketU HBA with a USB cable.
3. For hard drives or enclosures, allow the device to spin up for a few moments. Once the devices are ready, they will be recognized by the operating system and can be accessed as needed.

FCC Part 15 Class B Radio Frequency Interference statement

This equipment has been tested and found to comply with the limits for a Class B digital device, pursuant to part 15 of the FCC Rules. These limits are designed to provide reasonable protection against harmful interference in a residential installation. This equipment generates uses and can radiate radio frequency energy and, if not installed and used in accordance with the instructions, may cause harmful interference to radio communications. However, there is no guarantee that interference will not occur in a particular installation. If this equipment does cause harmful interference to radio or television reception, which can be determined by turning the equipment off and on, the user is encouraged to try to correct the interference by one or more of the following measures:

- Reorient or relocate the receiving antenna.
- Increase the separation between the equipment and receiver.
- Connect the equipment into an outlet on a circuit different from that to which the receiver is connected.
- Consult the dealer or an experienced radio/TV technician for help.

Modifications not expressly approved by the manufacturer could void the user's authority to operate the equipment under FCC rules. This device complies with part 15 of the FCC Rules. Operation is subject to the following two conditions: (1) this device may not cause harmful interference, and (2) this device must accept any interference received, including interference that may cause undesired operation. European Union Compliance Statement This Information Technologies Equipment has been tested and found to comply with the following European directives:

- European Standard EN55022 (1998) Class B
- European Standard EN55024 (1998)

Customer Support

If you encounter any problems while utilizing this or any other HighPoint Technologies, Inc. product, feel free to contact our Customer Support Department.

Web Support:

<https://highpoint-tech.com/websupport/>

HighPoint Technologies, Inc. websites:

<https://www.highpoint-tech.com>

© Copyright 2021 HighPoint Technologies, Inc. All right reserved.