



# **HighPointRR Mac Installation Guide**

V1.05 – Nov, 2022

## Contents

Overview .....	3
Prerequisites .....	3
1. Disabling macOS Secure boot for T2 Systems.....	4
Disabling Secure Boot.....	4
2. Disabling SIP for macOS 10.13x and earlier.....	5
3. Reduced Security Policy – For Apple M1 Platform .....	7
Reduced Security Policy.....	7
4. Installing the Device Driver .....	8
macOS 10.13/ 10.14/ 10.15/ 11.x/ 12.x/ 13.x Driver Installation Procedure .....	8
5. Update the Device Driver .....	12
Updating the Device Driver for macOS 10.13/10.14/10.15/11.x/12.x/13.x.....	12
6. Uninstalling the Device Driver.....	15
Uninstalling the Device driver for macOS 10.13 /10.14 /11.x /12.x /13.x.....	15
Uninstalling the Device Driver for macOS 10.15 .....	15
7. Installing the RAID Management Software (WebGUI) .....	16
Installing the WebGUI for macOS 10.13/10.14/10.15/11.x/12.x/13.x.....	16
8. Updating the RAID Management Software (WebGUI) .....	17
Updating the WebGUI for macOS 10.13/10.14/10.15/11.x/12.x/13.x.....	17
9. Uninstalling the RAID Management Software (WebGUI).....	17
Uninstalling the WebGUI for macOS 10.13/10.14/10.15/11.x/12.x/13.x .....	17
10. Trouble shooting.....	19
Unable to connect to the WebGUI .....	19
Verifying the hardware .....	19
Make sure the HighPointRR Driver is loaded .....	21
Check the SIP status .....	21
For T2 Systems: Make sure Secure Boot is disabled.....	21
For Apple M1 Platform: Make sure Security Policy is reduced .....	21
The WebGUI can't connect to a remote system .....	21
Appendix .....	22
Checking the macOS version .....	22
Check the security & privacy .....	22
Checking the SIP Status .....	24
Systems with T2 chipsets – Secure Boot status .....	24
Apple M1 Platform – Reduced security policy .....	24
Checking the Driver status and Version.....	25
WebGUI service restart.....	25
How to Collect Diagnostic Logs .....	26

## Overview

This guide includes important macOS related hardware & software requirements, installation, and upgrade procedures for the following products:

RR3700 Series  
RR2800 Series  
RR800 Series  
RR600 Series  
RR2700 Series  
RS643xTS Series  
RS6674T

### Prerequisites

This section describes the base hardware and software requirements for RAID controllers & enclosures.

### Driver Installation

This section covers driver installation, driver upgrade and driver uninstallation procedures for RAID controllers & enclosures in a macOS environment.

### RAID Management Software (WebGUI) Installation

This section covers WebGUI related installation, upgrade and uninstallation procedures for RAID controllers & enclosures in a macOS environment.

### Troubleshooting

Please consult this section if you encounter any difficulties installing or using RAID controllers & enclosures. It includes descriptions and solutions for commonly reported technical issues.

## Prerequisites

- 1) Operating System Support: macOS 10.13 or later
- 2) Before installing the driver and RAID Management software, you should log into the system as a System Administrator.
- 3) Identify the system as either T2 or Non-T2 based – if the system has a T2 chip, make sure to follow [section 1](#) before attempting to install any software for the device.
- 4) If you're using the **Apple M1** Platform, make sure to follow [section 3](#) before attempting to install any software for the HighPointRR device.

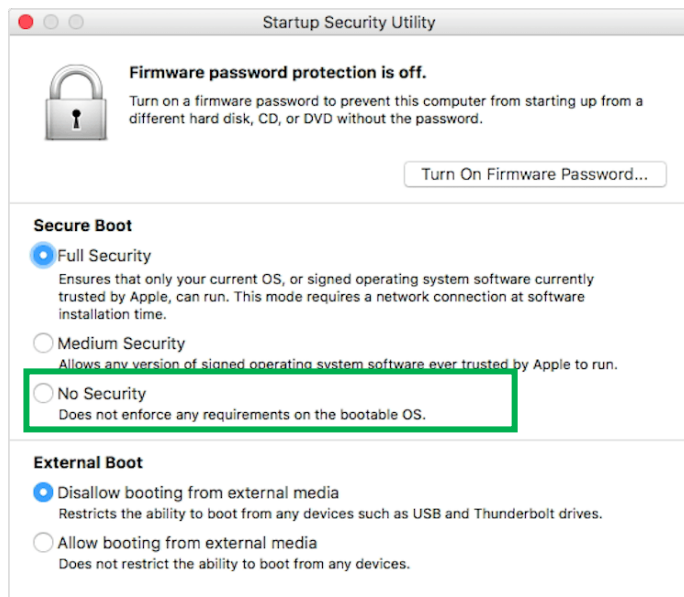
## 1. Disabling macOS Secure boot for T2 Systems

Customers working with Mac platforms manufactured in 2018 or later that feature a T2 security chip, will need to disable the **Secure Boot** in order to load drivers for third party devices.

For a list of products with the T2 Security Chipset, please visit the following website:  
[Mac computers that have the Apple T2 Security Chip](#)

### Disabling Secure Boot

In order to use these products with T2 systems, Secure Boot must be disabled. To disable this feature select "**No Security**" from the Startup Security Utility interface. You can access this menu by pressing the **Command (⌘)-R** keys after the Apple logo first appears during the boot-up process.



Instructions are available from Apple's website:  
[About Secure Boot](#)

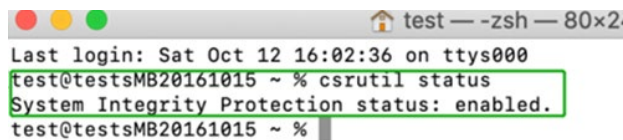
## 2. Disabling SIP for macOS 10.13x and earlier

In addition, macOS 10.13x and earlier may require that **SIP** (System Integrity Protection) be disabled. If enabled, older versions of macOS may prevent the device drivers from loading.

While macOS is running, open a terminal window to confirm whether **System Integrity Protection (SIP) status is disabled**.

If enabled, you will need to manually disable the setting. Open a terminal, and then enter the following command:

**csrutil status**

A terminal window titled 'test - zsh - 80x2' showing the command 'csrutil status' and its output. The output is 'System Integrity Protection status: enabled.' and is highlighted with a green box. The terminal also shows the user 'test' at 'test@testsMB20161015 ~ %' and the last login time 'Sat Oct 12 16:02:36 on ttys000'.

```
test@testsMB20161015 ~ % csrutil status
System Integrity Protection status: enabled.
test@testsMB20161015 ~ %
```

The example screenshot shown above indicates that SIP is enabled.

### To disable SIP

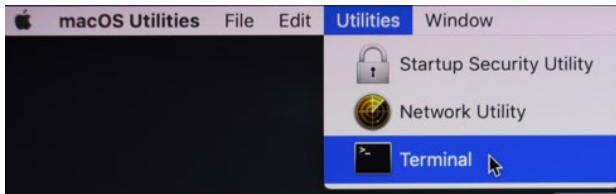
- 1) Restart the computer and hold down the “**Command + R**” buttons. Continue to hold these keys until macOS enters System Recovery mode.



**Note:** *If you are unable to enter Recovery Mode to disable SIP: Make sure you are using a wired keyboard and mouse for this procedure. Wireless devices may not be recognized or function properly when booting into this mode.*

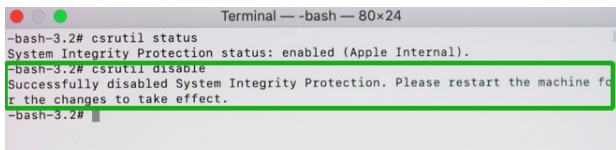


- 2) Click on Utilities in the upper left corner and select Terminal:

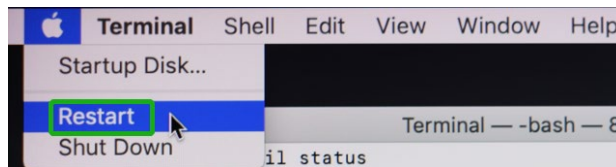


- 3) Set SIP to disabled in using Terminal. Enter the following command:

**csrutil disable**

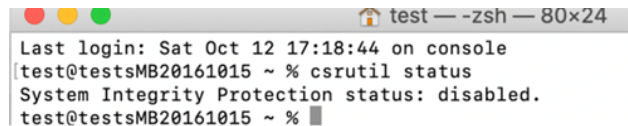


- 4) Click the **Apple** logo in the upper left-hand corner of the desktop, and select **Restart** to reboot the system.



- 5) After rebooting, confirm that SIP is disabled. Open terminal and type the following command:

**csrutil status**



If the status is now reported as **disabled**, you can install the HighPointRR driver.

### 3. Reduced Security Policy – For Apple M1 Platform

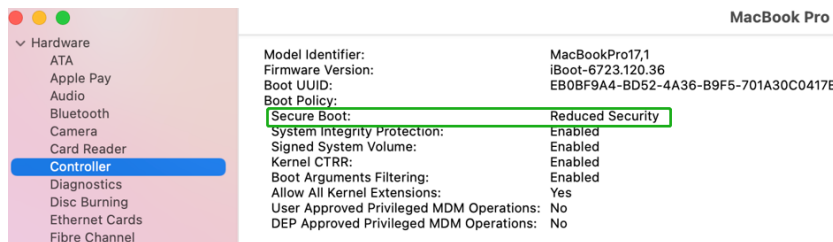
Customers working with Apple M1 Platforms will need to **reduce the Security Policy** in order to load drivers for third party devices.

Mac computers with Apple M1 chip, please visit the following website:

[Mac computers that have the Apple M1 Chip](#)

Check the system's Security Policy settings to determine if they need to be changed. If Secure Boot is set to “**Full Security**”, please change this to “**Reduced Security**.”:

**System Information -> Hardware -> Controller -> Boot Policy**

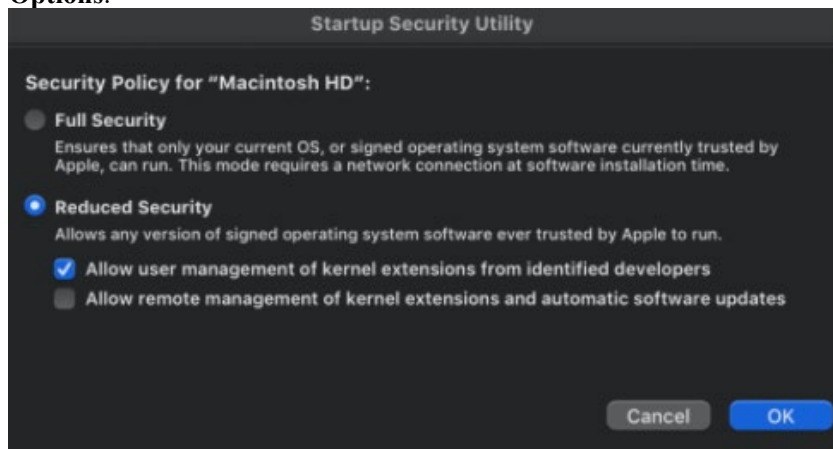


#### Reduced Security Policy

In order to use these products with Apple M1 Platform, Secure Boot must be **reduced Security**. Reduce this feature and select "**Allow user management of kernel extensions from Identified developers**" from the Startup Security Utility interface.

You can access this menu by:

Shutdown the system, **pressing and holding the Power Button** until you see **Loading Startup Options**.



Instructions are available from Apple's website:

[About Secure Boot for M1](#)

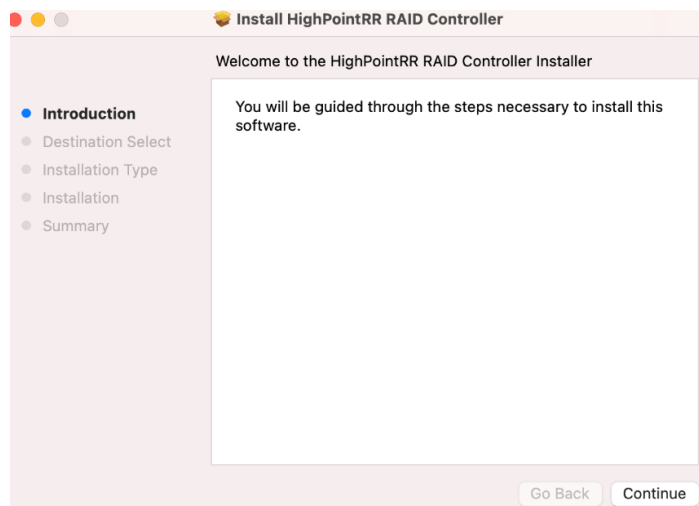
## 4. Installing the Device Driver

Current drivers can be downloaded from each product's **Software Downloads** webpage.

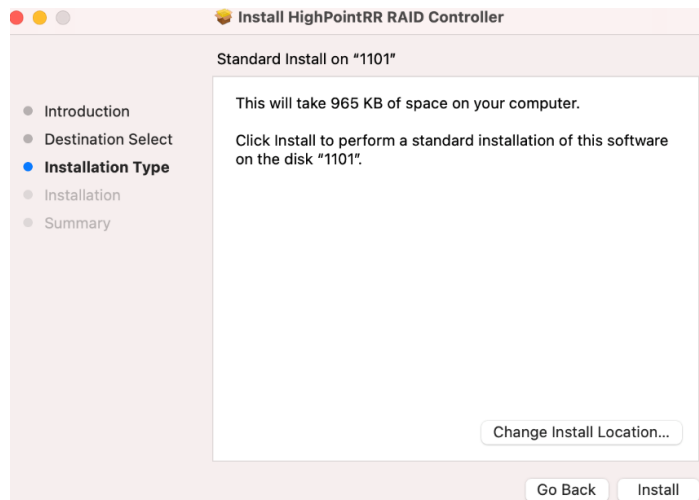
Product	Download Page
RR3740/3742/3720	<a href="https://www.highpoint-tech.com/rr3700-overview">https://www.highpoint-tech.com/rr3700-overview</a>
RR2840	<a href="https://www.highpoint-tech.com/rr2800-overview">https://www.highpoint-tech.com/rr2800-overview</a>
RR840	<a href="https://www.highpoint-tech.com/rr800-overview">https://www.highpoint-tech.com/rr800-overview</a>
RR2720/2721/2722/2711	<a href="https://www.highpoint-tech.com/rr272x-overview">https://www.highpoint-tech.com/rr272x-overview</a>
RR640L/642L/644L/644LS	<a href="https://highpoint-tech.com/rr600-overview">https://highpoint-tech.com/rr600-overview</a>
RS6434TS/6438TS	<a href="https://www.highpoint-tech.com/rs6430ts-overview">https://www.highpoint-tech.com/rs6430ts-overview</a>
RS6674T	<a href="https://www.highpoint-tech.com/rs6674t-overview">https://www.highpoint-tech.com/rs6674t-overview</a>

### macOS 10.13/ 10.14/ 10.15/ 11.x/ 12.x/ 13.x Driver Installation Procedure

- 1) Locate the download and double click the package to start the installer. Click the **Continue** button:

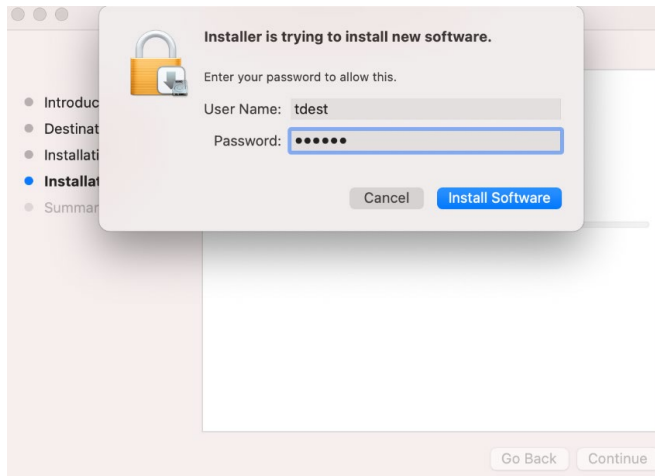


- 2) macOS will prompt you to install the driver. Click **Install** to proceed.

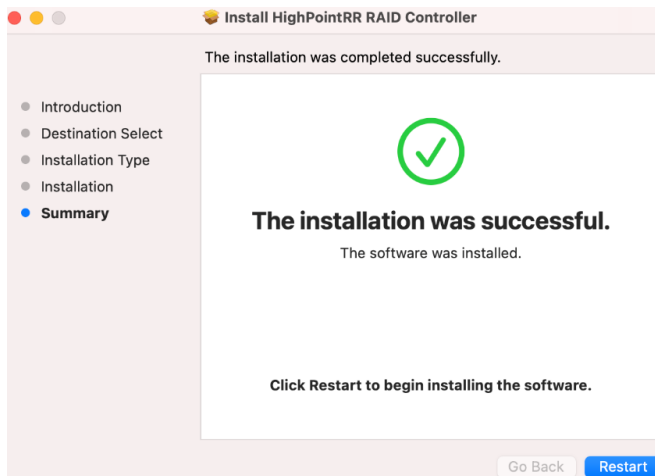




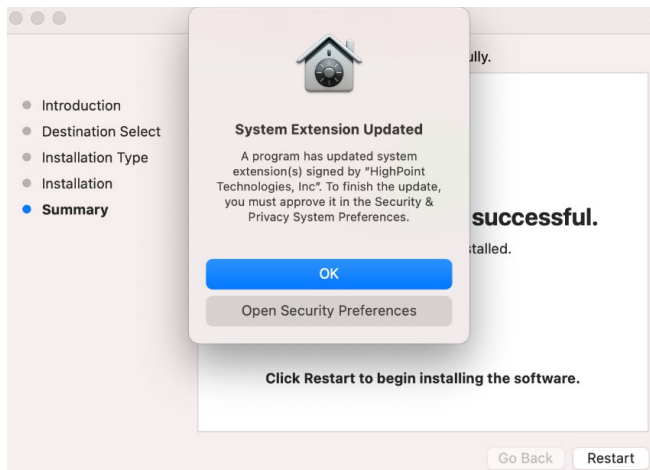
- 3) You will be prompted that installer is trying to install new software, enter the **Administrator** Username and Password. Once these have been entered, Click **Install Software**.



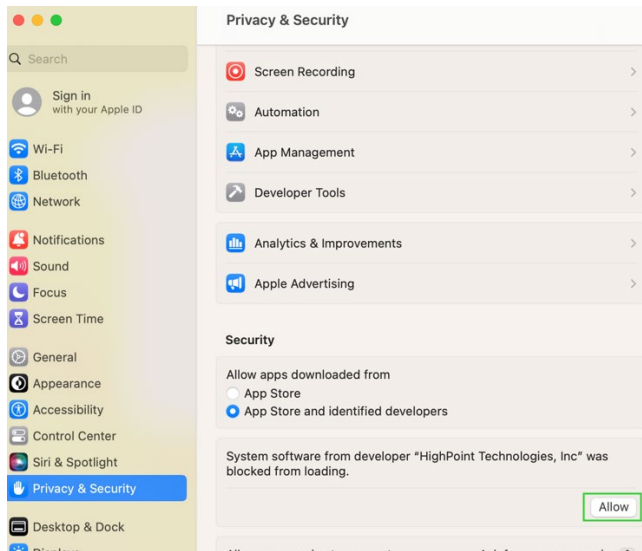
- 4) If no pop-ups appear, please proceed to the next step of installation. Click **Restart**.



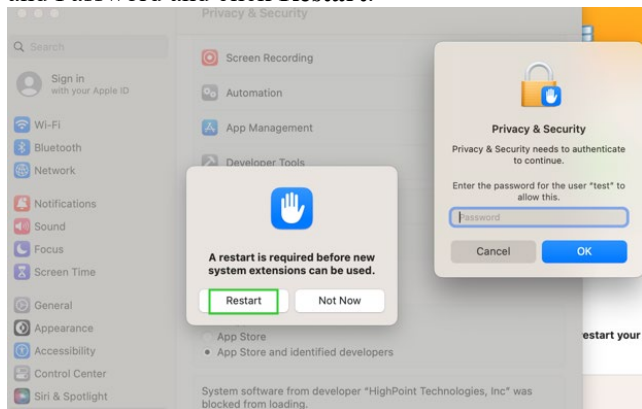
- 5) If you receive a popup window prompting you for permission, click **Open Security Preferences**.



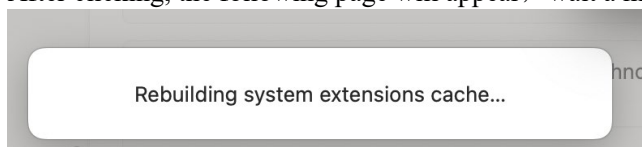
6) Make sure **App Store and identified developers** is checked, and then click **Allow**.



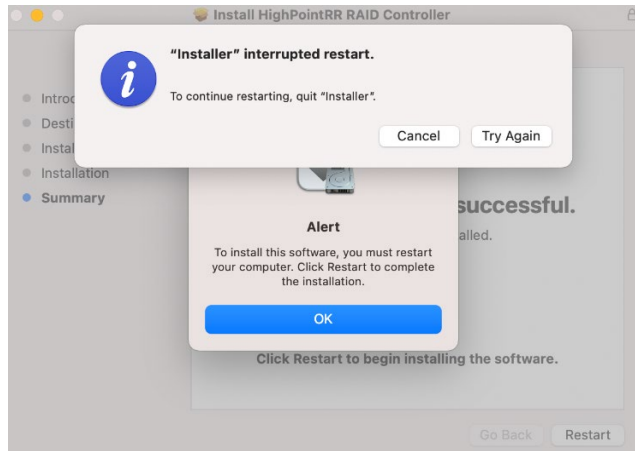
7) You will receive a popup window, prompting you to restart. Enter the **Administrator** Username and Password and click **Restart**.



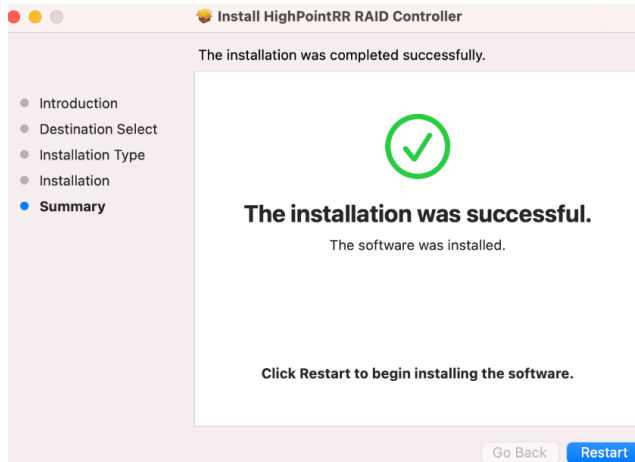
8) After clicking, the following page will appear, wait a moment.



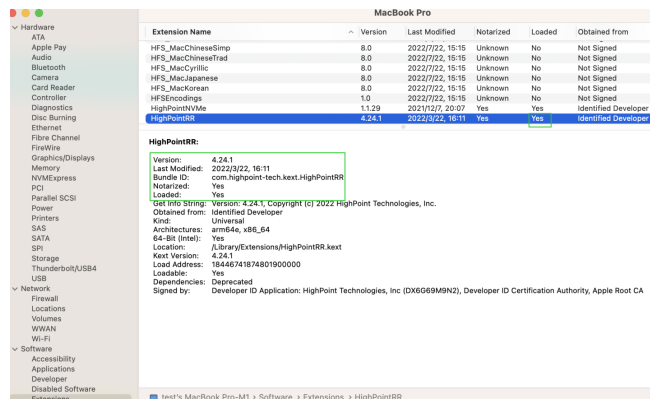
- 9) After the 'Rebuilding system extension cache' is completed, please click 'OK' in the pop-up window.



- 10) Return to the driver installation window. Click **Restart** to restart the system.



- 11) After the system restarts, the driver's status can be viewed under **System Information**; The following screenshot shows the driver has been loaded:



***Note:** The driver revision shown in the screenshots may not correspond with current software releases. Please make sure to download the latest driver updates from the product's Software Updates page.*

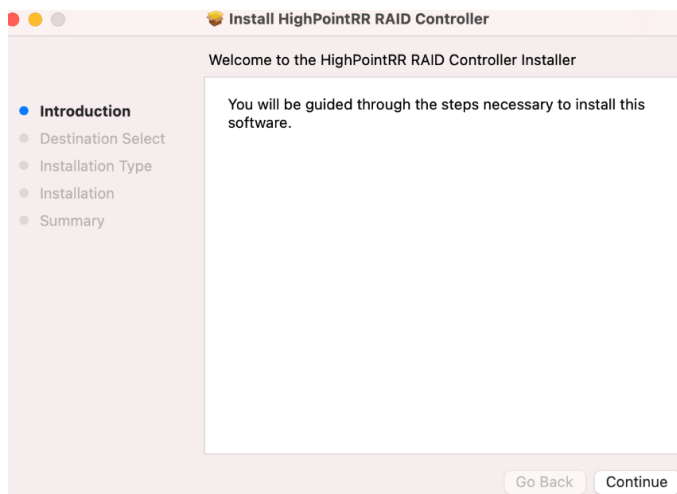
## 5. Update the Device Driver

Current drivers can be downloaded from each product's **Software Downloads** webpage.

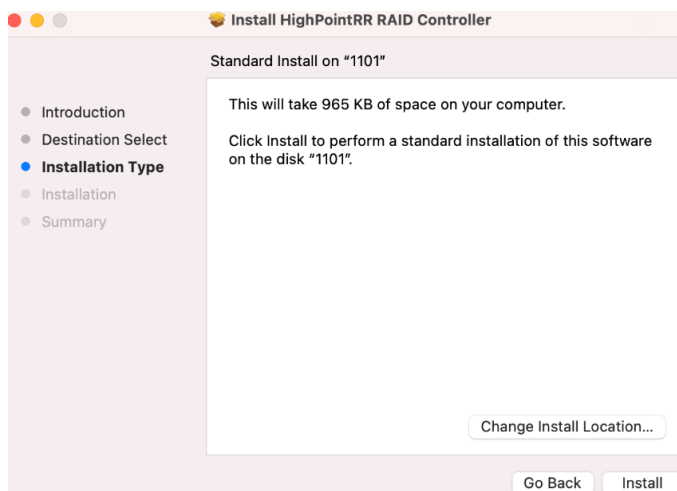
Product	Download Page
RR3740/3742/3720	<a href="https://www.highpoint-tech.com/rr3700-overview">https://www.highpoint-tech.com/rr3700-overview</a>
RR2840	<a href="https://www.highpoint-tech.com/rr2800-overview">https://www.highpoint-tech.com/rr2800-overview</a>
RR840	<a href="https://www.highpoint-tech.com/rr800-overview">https://www.highpoint-tech.com/rr800-overview</a>
RR2720/2721/2722/2711	<a href="https://www.highpoint-tech.com/rr272x-overview">https://www.highpoint-tech.com/rr272x-overview</a>
RR640L/642L/644L/644LS	<a href="https://highpoint-tech.com/rr600-overview">https://highpoint-tech.com/rr600-overview</a>
RS6434TS/6438TS	<a href="https://www.highpoint-tech.com/rs6430ts-overview">https://www.highpoint-tech.com/rs6430ts-overview</a>
RS6674T	<a href="https://www.highpoint-tech.com/rs6674t-overview">https://www.highpoint-tech.com/rs6674t-overview</a>

### Updating the Device Driver for macOS 10.13/10.14/10.15/11.x/12.x/13.x

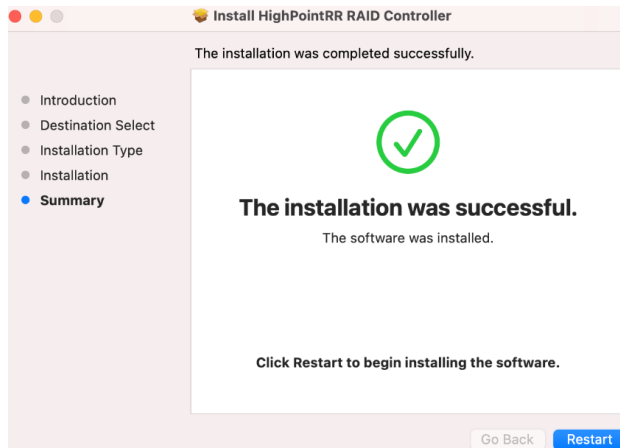
- 1) Locate the download and double click the package to start the installer. Click the **Continue** button:



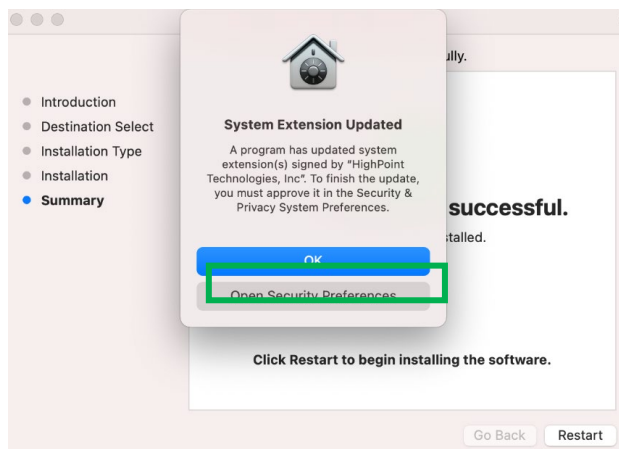
- 2) macOS will prompt you to install the driver. Click **Install** to proceed.



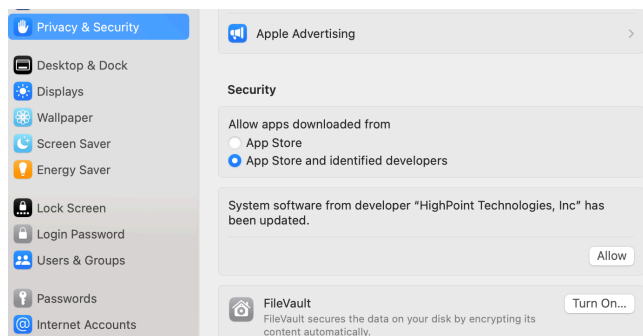
3) If no pop-ups appear, please proceed to the next step of installation. Click **Restart**.



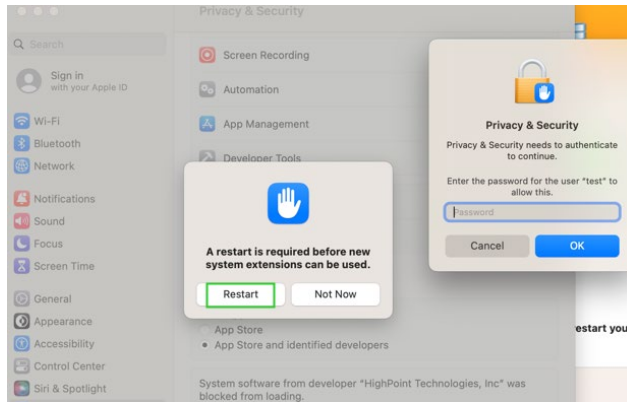
4) If you receive a popup window prompting you for permission, click **Open Security Preferences**.



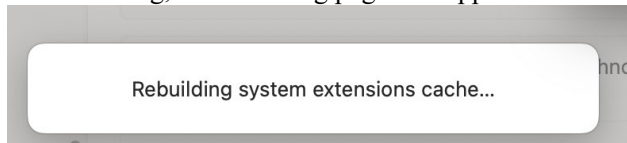
5) Make sure **App Store and identified developers** is checked, and then click **Allow**.



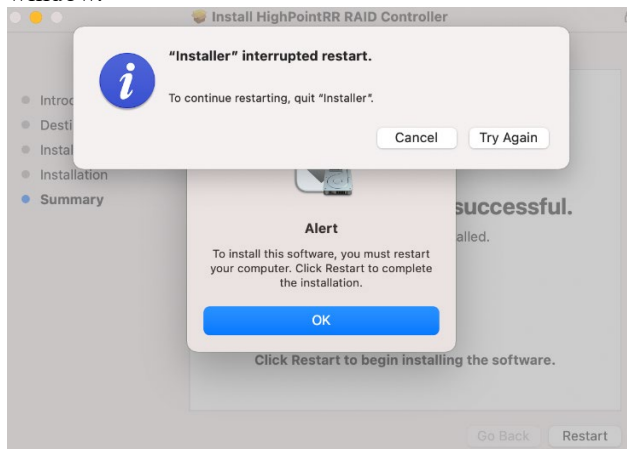
- 6) You will see a popup window, prompting you to restart. Enter the **Administrator** Username and Password and click **Restart**.



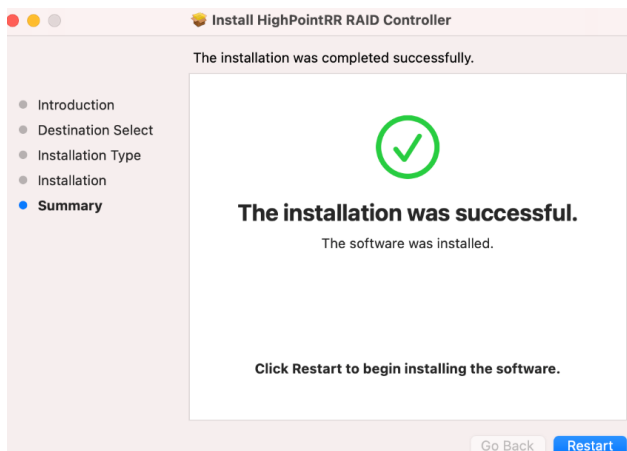
- 7) After clicking, the following page will appear, wait a moment.



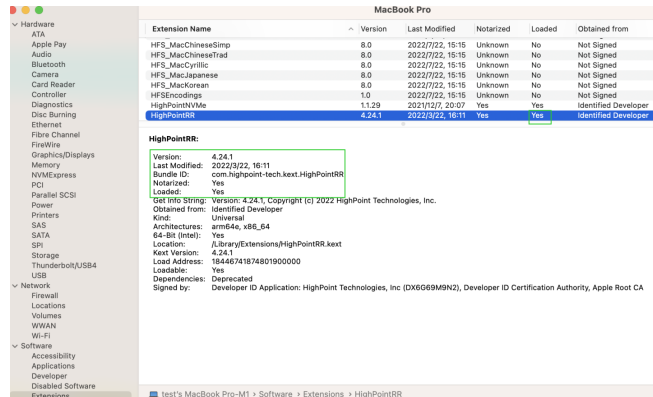
- 8) After the 'Rebuilding system extension cache' is completed, please click 'OK' in the pop-up window.



- 9) Return to the driver installation window. Click **Restart** to restart the system.



- 10) After the system restarts, the driver's status can be viewed under **System Information**; The following screenshot shows the driver has been loaded:



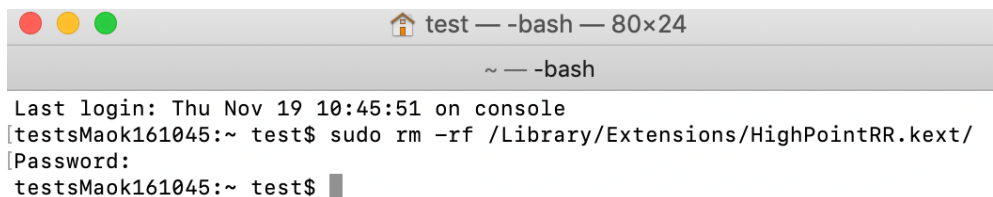
*Note: The driver revision shown in the screenshots may not correspond with current software releases. Please make sure to download the latest driver updates from the product's Software Updates page.*

## 6. Uninstalling the Device Driver

### Uninstalling the Device driver for macOS 10.13 /10.14 /11.x /12.x /13.x

To uninstall the HighPointRR driver, you will need to open a **Terminal** window and enter the following command:

```
sudo rm -rf /Library/Extensions/HighPointRR.kevt
```

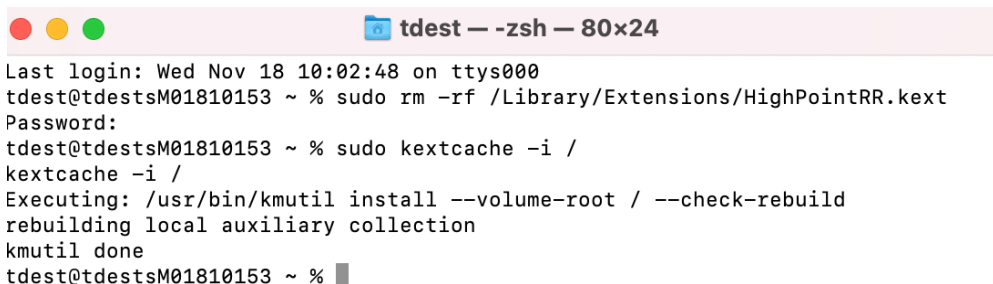


### Uninstalling the Device Driver for macOS 10.15

To uninstall the HighPointRR driver, you will need to open a Terminal window and enter the following command:

```
sudo rm -rf /Library/Extensions/HighPointRR.kevt
```

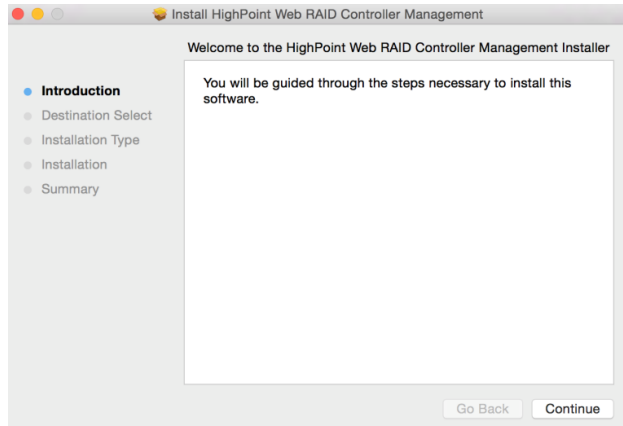
```
sudo kextcache -i /
```



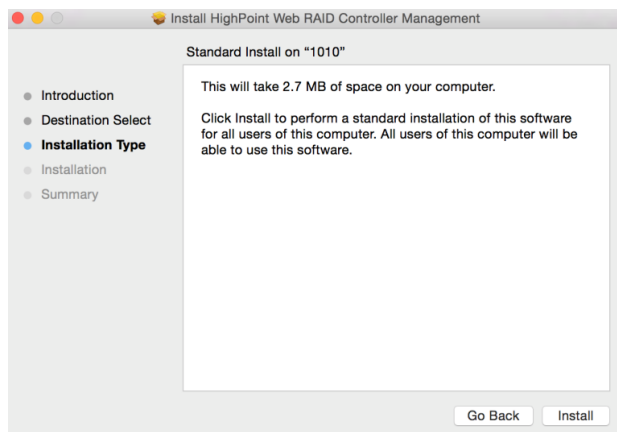
## 7. Installing the RAID Management Software (WebGUI)

### Installing the WebGUI for macOS 10.13/10.14/10.15/11.x/12.x/13.x

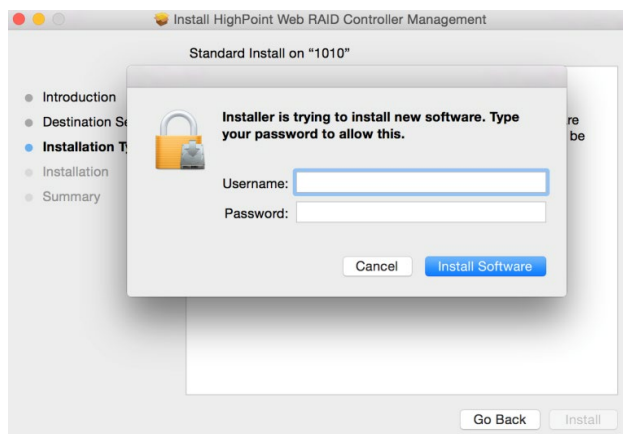
- 1) Double click the package named **HighPointWebGUI.pkg** to start the installer. When the window appears, click the **Continue** button.



- 2) You will be promoted to click the Install button. Click Install to continue.

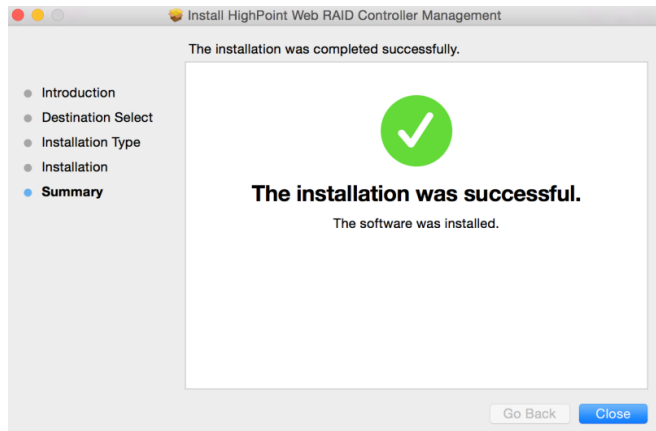


- 3) You will then be promoted to enter the **Administrator** Username and Password. Once these have been entered, click **Install Software** to continue.





- 4) The WebGUI Management software has been installed. Click **Close** to complete the procedure.



## 8. Updating the RAID Management Software (WebGUI)

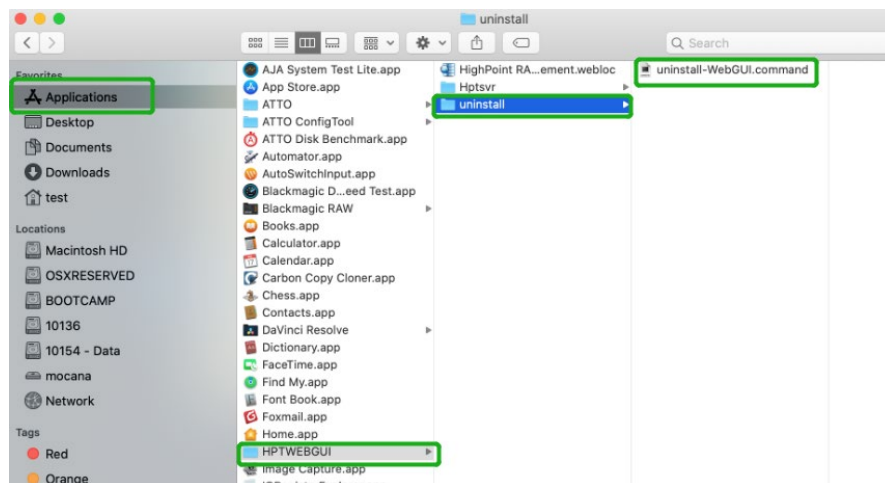
### Updating the WebGUI for macOS 10.13/10.14/10.15/11.x/12.x/13.x

- 1) First, uninstall the current WebGUI. Please refer to item 8 below ([Uninstalling the WebGUI](#)).
- 2) Download the latest version of the WebGUI from the appropriate Software Downloads webpage.
- 3) Locate the download and double click the package named **HighPointWebGUI.pkg** to start the installer. Please refer to [Installing the WebGUI](#) for more information.

## 9. Uninstalling the RAID Management Software (WebGUI)

### Uninstalling the WebGUI for macOS 10.13/10.14/10.15/11.x/12.x/13.x

To uninstall the WebGUI, access Applications, click on HPTWEBGUI, select uninstall, and double-click the **uninstall-WEBGUI.command**. The uninstall command will automatically open a terminal



Enter the macOS password, uninstall the software:

```
test — uninstall-WebGUI.command — 94x30
Last login: Thu Jul 2 13:34:32 on ttys000
/Applications/HPTWEBGUI/uninstall/uninstall-WebGUI.command ; exit;
test@tests-Pro2019 ~ % /Applications/HPTWEBGUI/uninstall/uninstall-WebGUI.command ; exit;

This script will attempt to uninstall HighPoint Web RAID Controller Manage Service

Note: You must be logged on as an administrator to uninstall the software.
The script will prompt you for an administrator password.

If prompted for a password please enter your administrator password.

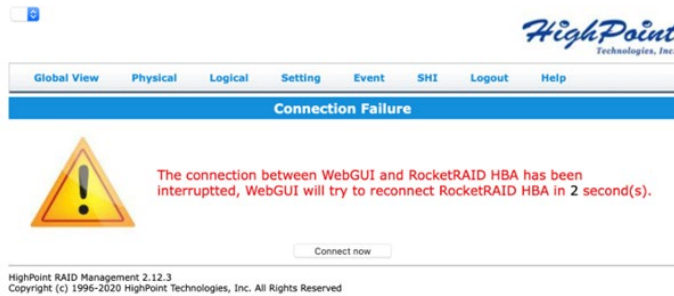
The following service files will be deleted
    /Applications/HPTWEBGUI
    /Library/Receipts/wwwfiles.pkg
    /Library/Receipts/webservice.pkg
    /Library/LaunchDaemons/HPTWebGUIDaemon.plist
    /usr/share/hpt
    /usr/bin/hptdaemonctl
/Library/LaunchDaemons/HPTWebGUIDaemon.plist: Operation now in progress
Process has completed.

[Process completed]
```

## 10. Trouble shooting

### Unable to connect to the WebGUI

After the driver and management software are installed, the management software displays a "Connection Failure" warning when attempting to start the interface:



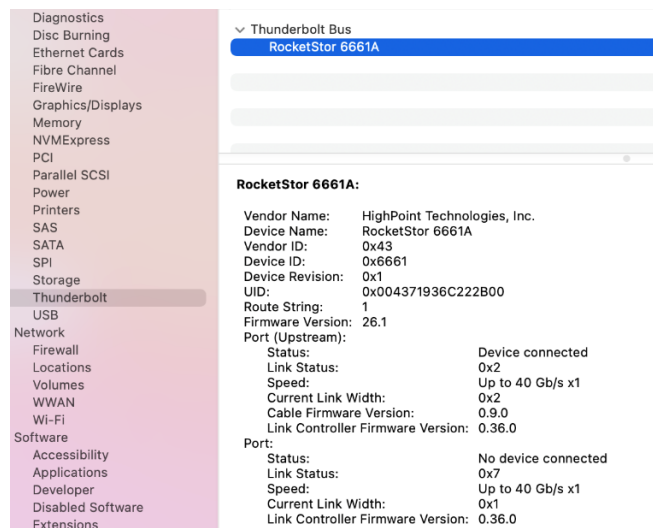
This error can be triggered by one of the following issues:

1. The hardware is not recognized by macOS
2. The device driver is not installed or is not loading properly.
3. WEBGUI service is not running.
4. The system's SIP status is incorrect.
5. If you are using a T2 system; Secure Boot may not be disabled.
6. If you are using Apple M1 system, Security Policy may not be 'Reduced'.

### Verifying the hardware

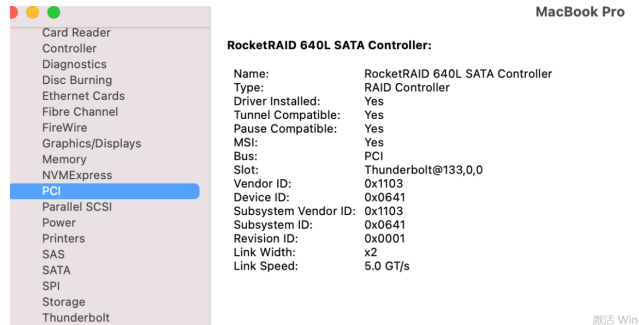
#### 1) The device is connected to the host through the Thunderbolt

01. If you are using the controller via our RocketStor 6661A adapter and a Thunderbolt™ 3 connection, please make sure the RocketStor 6661A device is properly recognized by macOS.



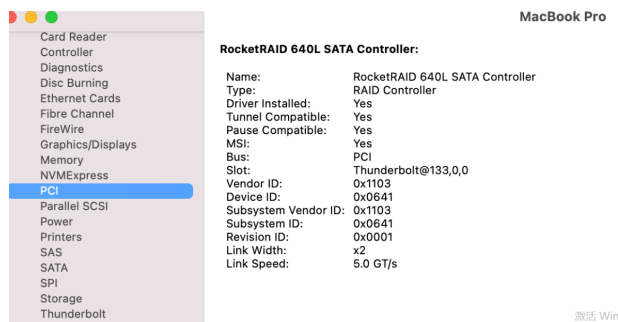
If the RocketStor 6661A entry is not displayed, this may be related to a connection problem – move the RS6661A to another Thunderbolt™ 3 port or replace the cable and recheck the entry.

02. If RocketStor 6661A is correctly connected, make sure the **System Information**→**PCI** controller is recognized by macOS (see example below):



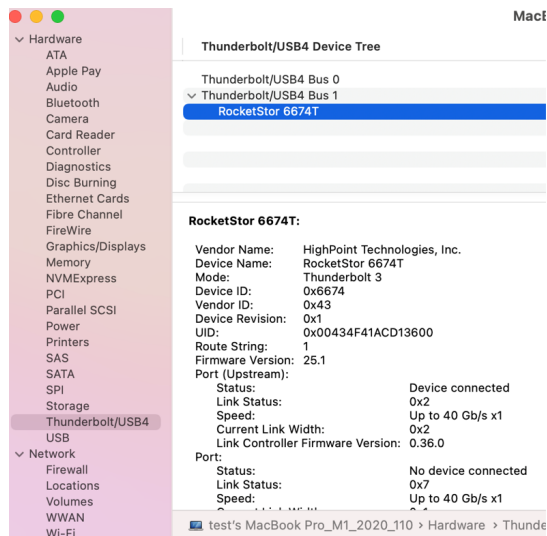
## 2) The device is directly connected to the host through the PCIE SLOT

Make sure the **System Information**→**PCI** controller is recognized by macOS (see example below):



## 3) The device is RAID enclosures

Make sure the **System Information**→**Thunderbolt** controller is recognized by macOS (see example below):



### **Make sure the HighPointRR Driver is loaded**

Please refer to the [Appendix - Checking the Driver status and Version](#) to make sure the HighPointRR driver is installed properly.

- 1) If the HighPointRR driver is not loading, proceed to – [Appendix - Check the security & privacy status](#). If HighPoint software is blocked in the permission, you need to click Allow.
- 2) If the driver is loading properly, but the WebGUI is still unable to start, please try to restart the WebGUI service. Please refer to [Appendix - WebGUI service restart](#) make settings.

If WebGUI is still not connected, please contact our [Support Department](#) to open a support ticket. Please make sure to include any screenshots and system information you are able to collect (see the Appendix for more information).

### **Check the SIP status**

- 1) Please refer to the [Appendix - Checking the SIP Status](#).
- 2) If the settings are not correct for your system, please refer to the driver installation manual for each system to reset the SIP status.

### **For T2 Systems: Make sure Secure Boot is disabled**

- 1) Please refer to the [Appendix - Systems with T2 chipsets](#) – Secure Boot status . If the setting is incorrect, you will need to reboot the system to change the setting.

### **For Apple M1 Platform: Make sure Security Policy is reduced**

- 1) Please refer to the [Reduced Security Policy](#) . If the setting is incorrect, you will need to shutdown the system to change the setting it.

If you encounter any problems while checking items 1-6, please refer to the [Appendix](#) to collect information about your system and configuration, and submit a support ticket to our Customer Support department using our [Online Support Portal](#)

### **The WebGUI can't connect to a remote system**

If you can't connect to a remote system, make sure **raidman-httpsd** is running on the target system, and confirm that you can access the remote system via a TCP/IP connection. If you have a firewall configured, make sure TCP port 7402 is not blocked.

## Appendix

When submitting a support ticket via our Online Support Portal, the following information will help our Support Department diagnose and resolve your issue as quickly and efficiently as possible.

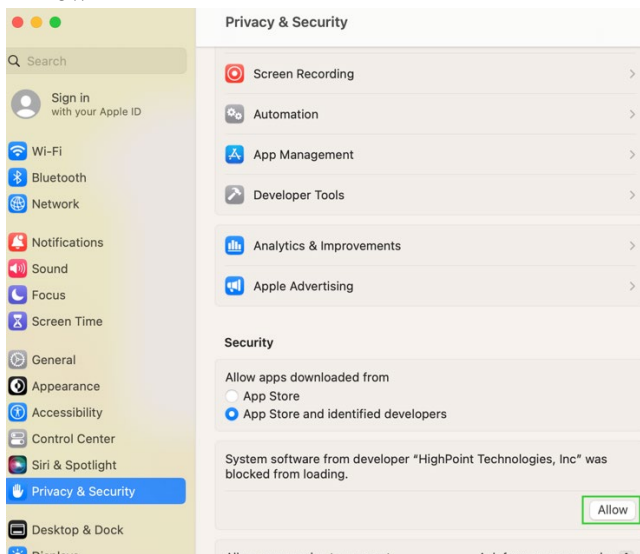
### Checking the macOS version

- 1) Click on the Apple logo located near the upper left-hand portion of the Desktop, and click “Version”. Then the version number of the system will all be displayed.

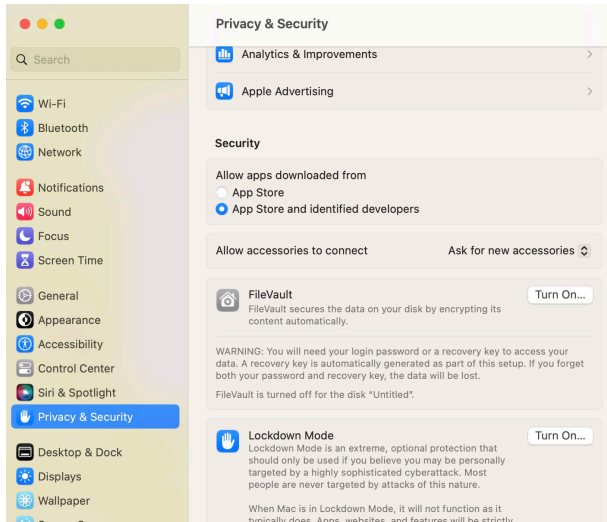


### Check the security & privacy

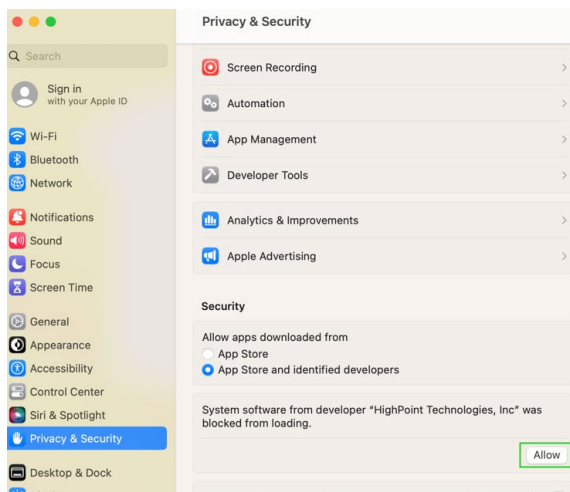
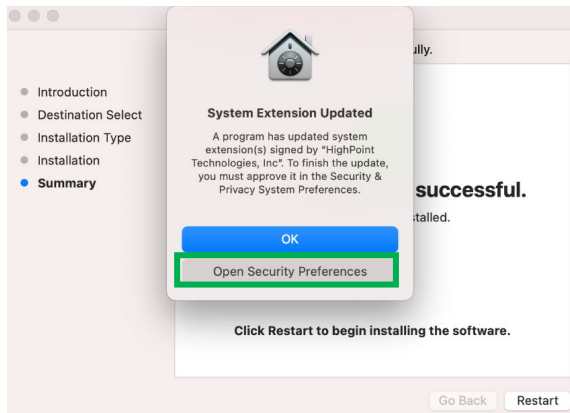
- 1) Check if there is HighPoint software blocked in the permission, if it is blocked, you need to click “Allow”.



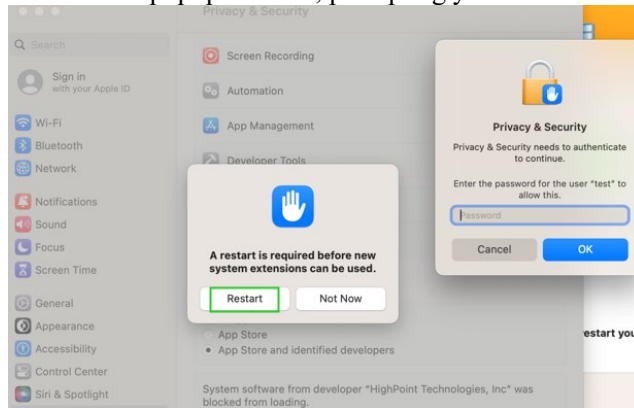
- 2) If 'System software from developer 'HighPoint Technologies, Inc' was blocked from loading' is not displayed, please do the following:



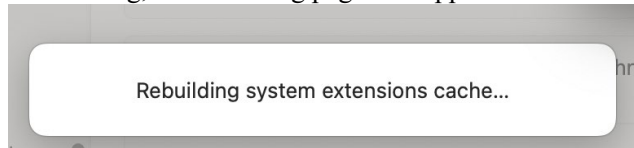
- First, uninstall the driver, please refer to the [Uninstalling the Device Driver](#)
- Install the driver again, please refer to the [Installing the Device Driver](#). The **System Extensions Updated** window that pops up when installing the driver, please click **Open Security Preferences**, **Allow** the permission, and click '**Restart**' in the pop-up window.



You will see a popup window, prompting you to restart. Click **Restart**.



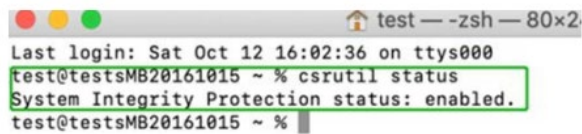
After clicking, the following page will appear, wait a moment.



## Checking the SIP Status

Open a Terminal window and enter the following command: **csrutil status**

Please take a screenshot of the output, and attach it to a support case (see example below):



Please refer to [Disabling SIP \(for macOS13x and earlier\)](#)

The status will vary depending on which version of macOS you are using:

MacOS Version	SIP Status	Driver Status
10.13.x	Disable	Loaded
10.14.x	Enable	Loaded
10.15.x	Enable	Loaded
11.x	Enable	Loaded
12.x	Enable	Loaded
13.x	Enable	Loaded

## Systems with T2 chipsets – Secure Boot status

You will need reboot the system and enter Recovery Mode to check the Secure Boot status. This setting should remain **disabled**.

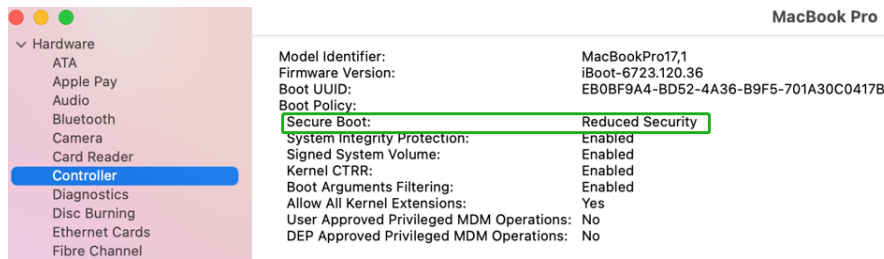
Please refer to [Disabling Secure Boot](#)

## Apple M1 Platform – Reduced security policy

Check if **Secure Boot** is **Reduced Security**



## System Information -> Hardware -> Controller -> Boot Policy

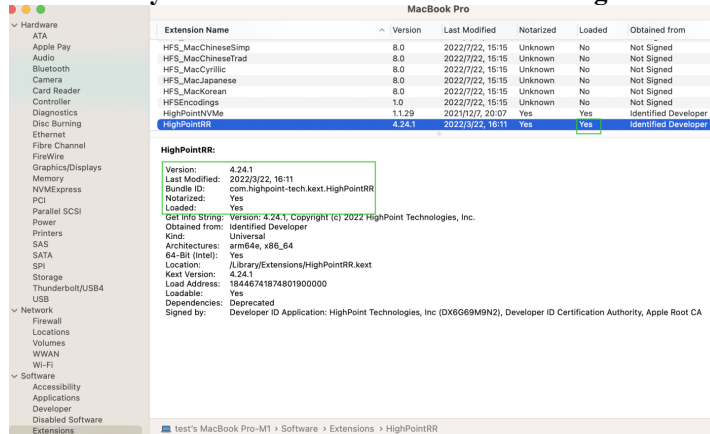


Secure Boot must be **reduced Security** in order to load drivers for third party devices, if change please refer to: [Reduced Security Policy](#)

## Checking the Driver status and Version

- 1) Click on **System Information** → **Extensions**, and then click on **HighPointRR** entry – please take a screenshot and attach it this support case (see the example below):

Make sure **System Information** → **Extensions** → **HighPointRR** 'Loaded' is Yes



*Note: The driver revision shown in the screenshots may not correspond with current software releases. Please make sure to download the latest driver updates from the product's Software Updates page.*

## WebGUI service restart

If you can't connect to the WebGUI, please check if a process named raidman-httpsd is running on the system. If it is not running, you can start it manually by opening a terminal window and running the command: “**sudo hptdaemonctl restart**”.


## How to Collect Diagnostic Logs

We have provided a detailed video on log collection methods: [link](#)

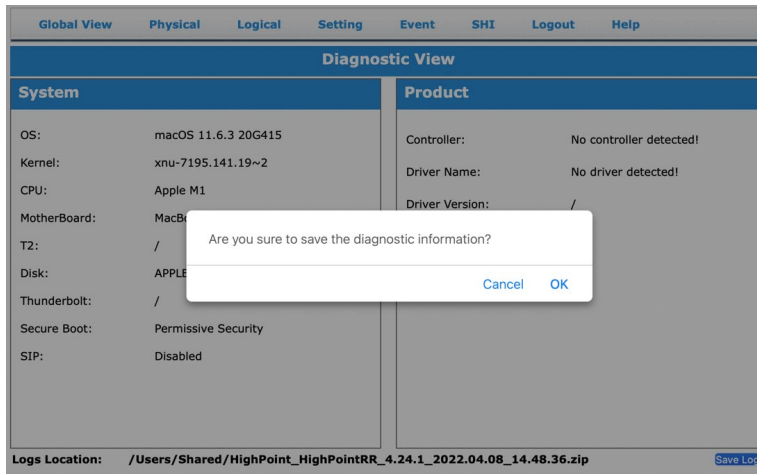
- 1) **1-Click Self-Diagnostic Solution:** Diagnostic View provides a “1-click” information collection system for troubleshooting. It will gather all necessary hardware, software and storage configuration data and compile it into a single file, which can be transmitted directly to our FAE Team via our Online Support Portal.

Diagnostic View	
<b>System</b>	<b>Product</b>
OS: macOS 11.6.3 20G415	Controller: No controller detected!
Kernel: xnu-7195.141.19~2	Driver Name: No driver detected!
CPU: Apple M1	Driver Version: /
MotherBoard: MacBookPro17,1	
T2: /	
Disk: APPLE SSD AP0256Q	
Thunderbolt: /	
Secure Boot: Permissive Security	
SIP: Disabled	
Logs Location: /Users/Shared/HighPoint_HighPointRR_4.24.1_2022.04.08_14.48.36.zip <span>Save Logs</span>	

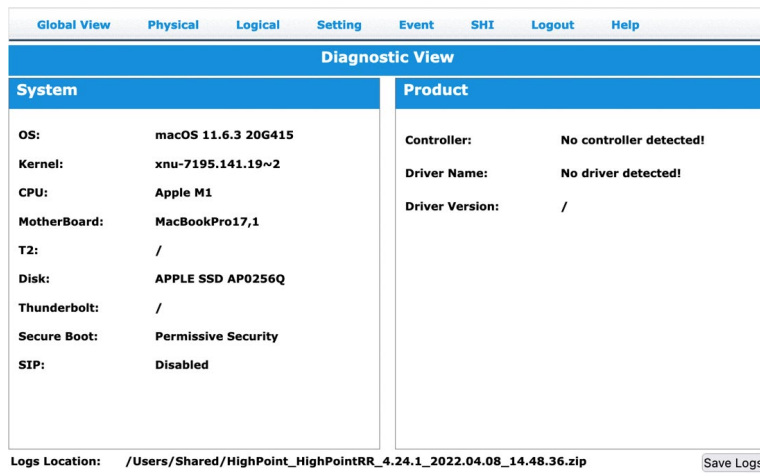
- 2) You can also click 'Help'→'Diagnostic' to enter the diagnostic view.

HBA Properties		Storage Properties	
Host Adapter model: 0	Enclosure count: 0		Total Capacity: 0 GB
Physical Drive: 0	Legacy Disk: 0		Configured Capacity: 0 GB
RAID Count: 0			Free Capacity: 0 GB

- 3) Click the “**Save Logs**” button to create the diagnostic file.  
Note, this process may take several minutes to complete.



- 4) 'Logs Location' will display the location of the saving path.



Please submit the log file to our Support Department using our online services:  
(<https://www.highpoint-tech.com/support-and-services>).