

HighPoint RR3700/2800/800/R700

RAID Controller

Rocky Linux

Installation Guide

Copyright © 2023 HighPoint Technologies, Inc.

All rights reserved.

Last updated on March 20, 2023

Table of Contents

1 Overview	1
2 Installing Linux Rocky Linux on RR Series RAID controller	1
Step 1 Prepare Your Hardware for Installation	1
Step 2 Check System EFI Settings	1
Step 3 Flash UEFI Rom to RAID Controller	3
Step 4 Create Array	4
Step 5 Prepare the Driver Diskette	5
Step 6 Install Linux Rocky	5
3 Monitoring the Driver	8
4 Installing RAID Management Software	9
5 Troubleshooting	9
6 Rebuilding Driver Module for System Update	10
7 Appendix A	10

1 Overview

The purpose of this document is to provide clear instructions on how to install Linux Rocky Linux on the RR Series RAID controller.

✧ Supported system: Rocky Linux 8.6/8.7/9.0/9.1

✧ Supported controller: RR3740/3720/2840/840/3742/710/720

2 Installing Linux Rocky Linux on RR Series RAID controller

If you would like to install Linux Rocky Linux onto drives attached to RR Series RAID controller, please perform the following operations:

Step 1 Prepare Your Hardware for Installation

After you attach your hard disks to RAID controller, you can use **EFI Utility** to configure your hard disks as RAID arrays, or just use them as single disks.

Before installation, you must remove all the Hard disks, which are not physically attached to RAID controller, from your system.

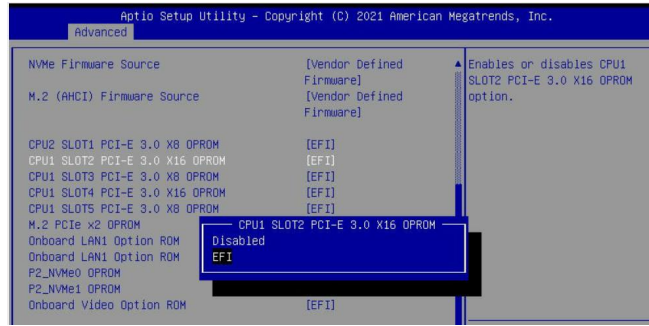
Note

RAID Controller support EFI boot. If you have other SCSI adapters installed, you must make sure the RR Series controller EFI will be loaded firstly. If not, try to move it to another PCI slot. Otherwise you may be unable to boot up your system.

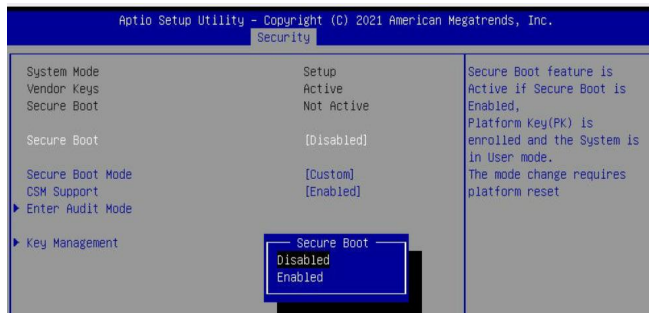
Step 2 Check System EFI Settings

In your system EFI SETUP menu, change **Boot Sequence** in such a way that the system will first boot from **EFI CDROM** or **EFI** a Bootable USB drive, after you finish installation, set RR Series RAID as the first boot device to boot up the system. Refer to your motherboard EFI manual to see how to set boot sequence.

1. Set UEFI setting with SuperMicro X11DPi-NT motherboard as an example.
 - a. **"Advanced->PCIe/PCI/PnP Configuration->CPUSlot PCI-E OPROM"** to **"EFI"**. Suppose RAID Controller is connected to motherboard CPU1 Slot 2 PCI-E X16, then you should set "CPU1 Slot 2 PCI-E X16 OPROM" to "EFI";

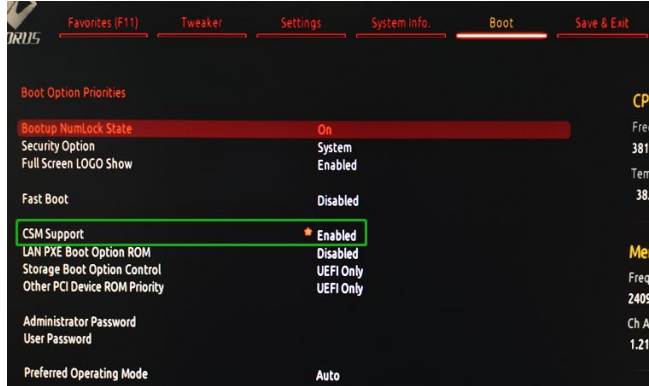


- b. Disable "Secure Boot", set "Attempt Secure Boot" to "Disabled".



- 2. Set UEFI setting with GA-X570 AORUS MASTER motherboard as an example.

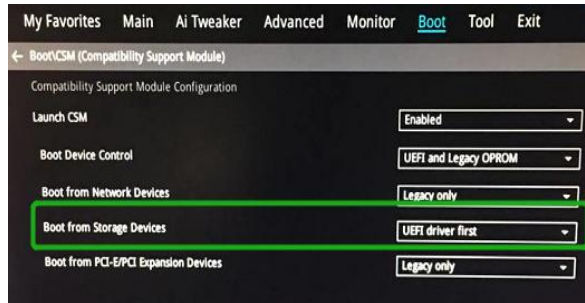
- a. Set " Boot->CSM Support " to "Enabled";



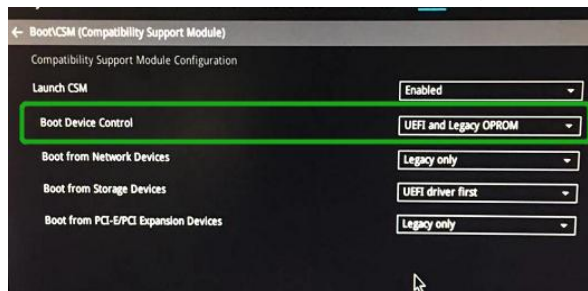
- b. And" Boot-> Storage Boot Option Control " to "UEFI Only";



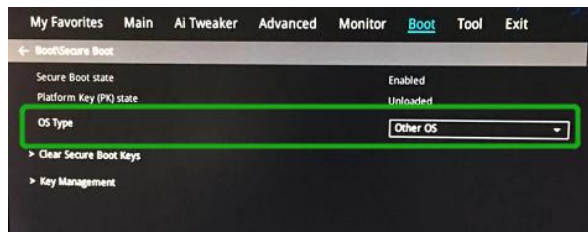
3. Set UEFI setting with ASUS PRIME X299 -DELUXE motherboard as an example:
 - a. Set "Boot from Storage Devices" to "UEFI driver first";



- b. And "Boot Device Control" to "UEFI Only" or "UEFI and Legacy OPROM";



- c. Set "OS Type" to "Other OS".



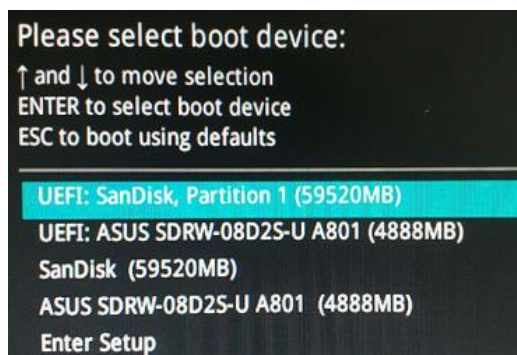
Step 3 Flash UEFI Rom to RAID Controller

For Example RR3740C:

For other products, please refer to: [Update BIOS_UEFI ROM](#)

Note: Make sure your USB flash partition format is FAT32.

- a. Unzip RR3740C UEFI package to root dir(/) of a USB flash drive, and insert the USB flash drive to the motherboard;
- b. Booting from the UEFI USB flash and enter the UEFI environment;



- c. Command with “rr3740.nsh”, flash UEFI rom to RR3740C Controller and reboot;

```
FS2:\> rr3740.nsh
FS2:\> load.efi 3740a11.blf
Load Utility for Flash EPROM v1.1.5
(built at Jul 18 2022 15:07:51)

Set flash size to 231K
Found adapter 0x37401103 at PCI 193:0:0
Offset address 0x0
EPROM Vendor: WINBOND W25X40BV
Erasing .....Succeeded
Flashing ....

Flashing Success (total retry 0)

Verifying ....

Passed !
```

Step 4 Create Array

- a. Attach two hard disks to RR3740C Controller;
 b. Boot, enter the motherboard’s Boot List and select start from UEFI USB flash:

```
Boot Override
UEFI: USB, Partition 1
(B97/D0/F0) UEFI PXE: IPv4 Intel(R) I350 Gigabit Network
Connection(MAC:3cecef40aidc)
```

- c. Command “ArrayCreate.efi” to enter the Utility:

```
FS2:\> ArrayCreate.efi
Highpoint RAID utility for UEFI (version: 20211014)
==== Controller information:
  PCI Location: c1:00:00
  Vendor: HighPoint Technologies, Inc.
  Product: RocketRAID 3740 SAS Controller

==== Physical device list(count 2):
1/13 WDC WUH722020BL5204-BLG2YNHA, 20000521MB(MaxFree 20000521MB), Normal [RA] [WC]
1/16 WDC WUH722222AL5200-2TG0R8GE, 22000902MB(MaxFree 22000902MB), Normal [RA] [WC]

==== Logical device list(count 0):
-----
>>> Please specify command to execute:
<<< _
```

- d. Command “create RAID0”.
 Create RAID0 array with all disks and with maximum capacity.

```
<<< create RAID0
Creating array: RAID0_000041A7.
Array created successfully.
=====

==== Physical device list(count 2):
1/13 WDC WUH722020BL5204-BLG2YNHA, 20000521MB(MaxFree 0MB), Normal [RA] [WC]
1/16 WDC WUH722222AL5200-2TG0R8GE, 22000902MB(MaxFree 2000381MB), Normal [RA] [WC]

==== Logical device list(count 1):
-----
1 [VD0-0] RAID0_000041A7 (RAID0), 40001043MB (Stripe 64KB), Normal
  1/13 WDC WUH722020BL5204
  1/16 WDC WUH722222AL5200
-----
>>> Please specify command to execute:
<<< _
```

- e. Command “exit”;
 f. For more command usages, refer to [Appendix A](#).

RR3740/3720/710/720 also supports the creation method of BIOS/UEFI HII. Please refer to [UM-Chapter 4](#)

Step 5 Prepare the Driver Diskette

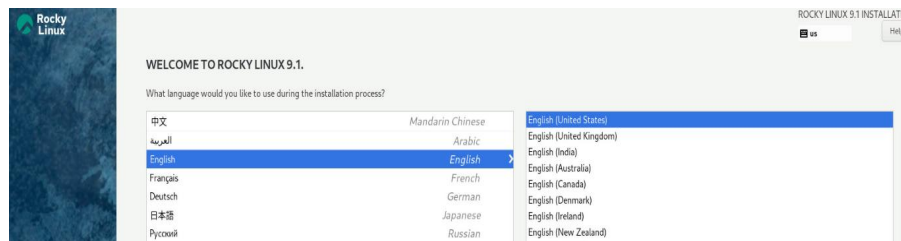
Extract **RR37xx_8xx_28xx_Rocky_Linux x.x_x86_64_vx.xx.xx_xx_xx_xx.tar.gz** to top (/) directory of an USB flash drive. It will look like:

```
[root@localhost mnt]# tar zxvf RR37xx_8xx_28xx_Rocky_Linux9.1_x86_64_v1.23.13_23_03_15.tar.gz
hptdd/
hptdd/modules.pcimap
hptdd/modules.alias
hptdd/install.sh
hptdd/pcitable
hptdd/modules.cgz
hptdd/rhel-install-step1.sh
hptdd/modules.dep
hptdd/rhel-install-step2.sh
hptdd/rhdd
hptdd/pci.ids
hptdd/readme.txt
```

Step 6 Install Linux Rocky

For Example: Rocky Linux9.1

- Insert the USB flash drive to the target system.
- Booting from Bootable USB drive (EFI mode).
- When the following window appears during the installation process,



Press **Ctrl+ALT+F2** to switch to the shell on console and press **Enter** to activate this console.

```
Rocky Linux 9.1 (Blue Onyx)
Kernel 5.14.0-162.6.1.el9_1.x86_64 on an x86_64

[anaconda root@localhost ~]#
```

And then execute following commands to copy the driver contents:

- ```
mkdir /hptdd ← Create mount point for USB flash drive

mount /dev/sdb1 /hptdd/ ← Mount the USB flash drive to /hptdd

cp -a /hptdd/hptdd /tmp/ ← Copy driver installation file to system temporary
 directory

umount /dev/sdb1 ← Unmount the USB flash drive
```

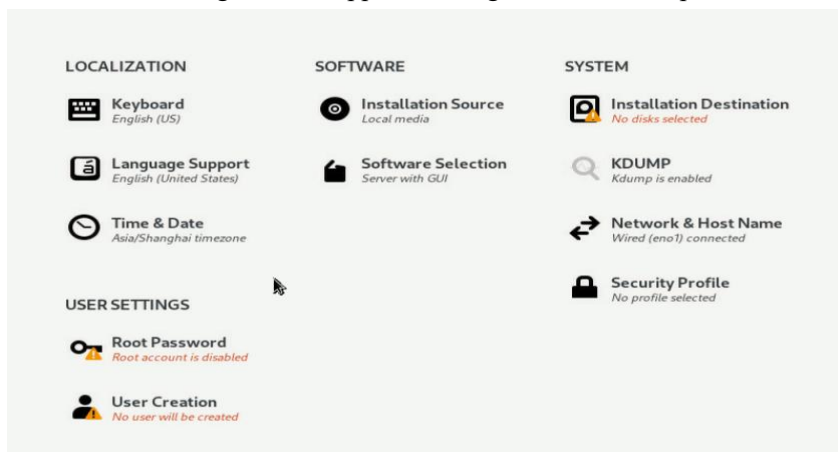
```
anaconda root@localhost /]# mkdir /hptdd
anaconda root@localhost /]# mount /dev/sdb1 /hptdd/
anaconda root@localhost /]# cp -a /hptdd/hptdd/ /tmp/
anaconda root@localhost /]# umount /dev/sdb1
```

When the USB flash drive is unmounted, please unplug the USB flash drive from the mainboard. And then execute following command to install driver to install the Linux Rocky Linux.

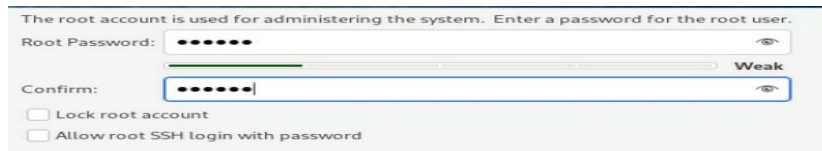
# sh /tmp/hptdd/rhel-install-step1.sh ← Load RR3740C driver.

```
anaconda root@localhost /]# sh /tmp/hptdd/rhel-install-step1.sh
Driver Installation
Driver installation step 1 completed.
anaconda root@localhost /]# _
```

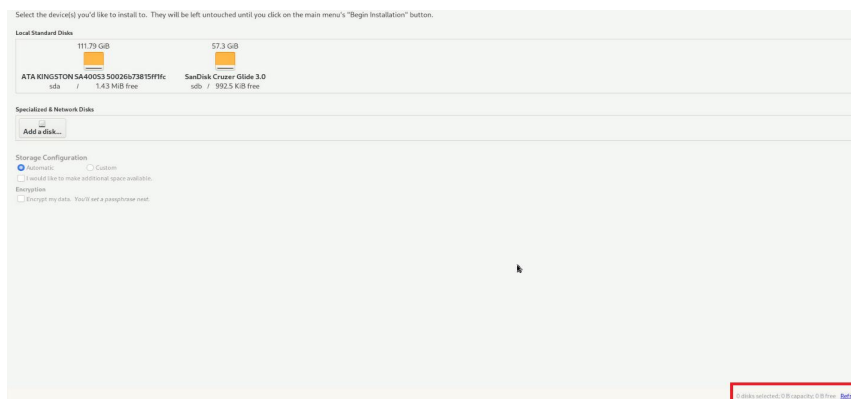
- d. Then press “ALT+F6” to switch back to installation screen and Choose language.
- e. When the following window appears during the installation process,



1) Set root password

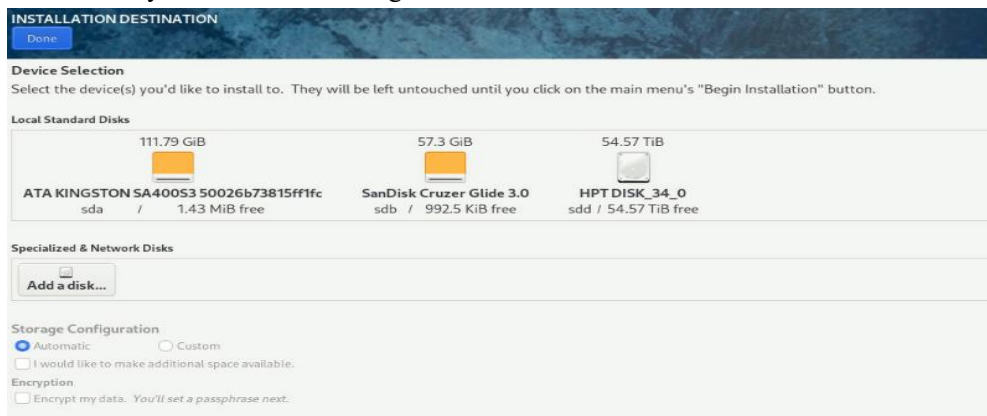


2) Select Installation Destination and click “refresh”

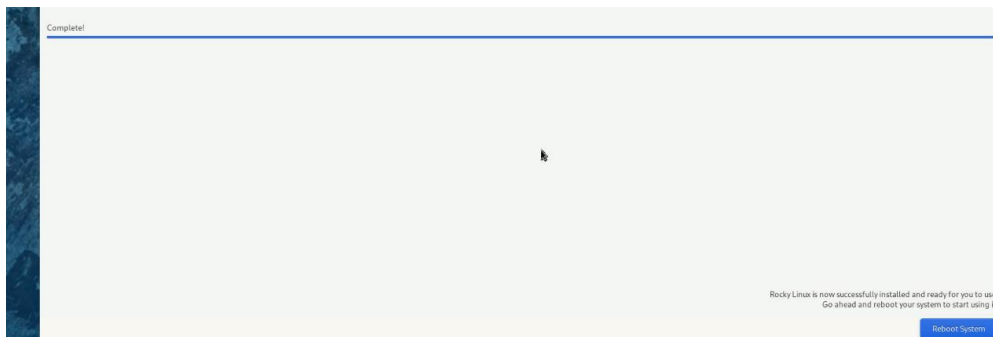




then choose your own disk and begin installation.



- f. When the screen shows that “Complete!”.



press **Ctrl+ALT+F2** to the shell and type the following commands:

```
cp -r /tmp/hptdd /mnt/sysimage/tmp/hptdd
chroot /mnt/sysimage
sh /tmp/hptdd/rhel-install-step2.sh
rm -rf /tmp/hptdd
exit
```

```
anaconda root@localhost /l# cp -r /tmp/hptdd /mnt/sysimage/tmp/hptdd
anaconda root@localhost /l# chroot /mnt/sysimage/
anaconda root@localhost /l# sh /tmp/hptdd/rhel-install-step2.sh
Driver Installation
Updating 5.14.0-162.6.1.el9_1.x86_64...
Driver installation step 2 completed.
anaconda root@localhost /l# rm -rf /tmp/hptdd/
anaconda root@localhost /l# exit
exit
anaconda root@localhost /l#
```

- g. Press **ALT+F6** and press **Reboot System**.
- h. If you want to boot from another kernel, please install the RR3700 Series opensource driver after entering the system.
- i. Restart to enter the system, **please connect to the internet**:
- j. Linux opensource driver link, open the following link to enter the "Software Download" page to download:

RR3700 Series: <https://www.highpoint-tech.com/rr3700-overview>

RR2800 Series: <https://www.highpoint-tech.com/rr2800-overview>

RR800 Series: <https://www.highpoint-tech.com/rr800-overview>

Rocket 700 Series: <https://www.highpoint-tech.com/rocket700-series>

Extract driver package:

```
tar zxvf RR37xx_8xx_28xx_Linux_X86_64_Src_vx.xx.xx_xx_xx_xx.tar.gz
```

Run the **.bin** file to install the driver package.

```
./rr37xx_8xx_28xx_linux_x86_64_src_vxx.x.x_xx_xx_xx.bin or
```

```
sh rr37xx_xx_28xx_linux_x86_64_src_vxx.x.x_xx_xx_xx.bin
```

```
[root@localhost home]# ./rr37xx_8xx_28xx_linux_x86_64_src_v1.23.13_23_01_16.bin
Verifying archive integrity... All good.
Uncompressing RR3740A/840A Linux Open Source package installer.....
.....
Checking and installing required toolchain and utility ...
Installing program make ... done
Installing program gcc ... done
Found program perl (/usr/bin/perl)
Found program wget (/usr/bin/wget)
```

- k. Follow the prompts to complete the driver installation.

```
SUCCESS: Driver is installed successfully for kernel 5.14.0-162.6.1.el9_1.x86_64
from Internet.
Please restart the system for the driver to take effect.
If you want to uninstall the driver from the computer, please run hptuninrr3740a
to uninstall the driver files.
[root@localhost home]#
```

- l. After the installation is complete, you can perform system update operations.

## 3 Monitoring the Driver

Once the driver is running, you can monitor it through the Linux proc file system support. There is a special file under `/proc/scsi/rr3740a/.` Through this file you can view driver status and send control commands to the driver.

### Note

---

The file name is the SCSI host number allocated by OS. If you have no other SCSI cards installed, it will be 0. In the following sections, we will use `x` to represent this number.

---

Using the following command to show driver status:

```
cat /proc/scsi/rr3740a /x
```

This command will show the driver version number, physical device list and logical device list.

## 4 Installing RAID Management Software

HighPoint RAID Management Software is used to configure and keep track of your hard disks and RAID arrays attached to RR Series RAID controller. Installation of the management software is optional but recommended.

Please refer to HighPoint RAID Management Software documents for more information.

## 5 Troubleshooting

If you do not install the system or update the kernel according to the installation manual, the system will crash and you will not be able to enter. Please follow the steps below.

- a. Choose “**Rocky Linux (5.14.0-162.6.1.el9\_1.x86\_64) 9.1**” and press enter the system

```
Rocky Linux (5.14.0-162.6.1.el9_1.x86_64) 9.1 (Blue Onyx)
Rocky Linux (0-rescue-0958554969c644eeb4fcd966bac71eed4) 9.1 (Blue Onyx)
FreeDOS (on /dev/sdb1)
UEFI Firmware Settings
```

- b. Install Linux Opensource driver.
- c. Linux Opensource driver link, open the following link to enter the "Software Download" page to download:

RR3700 Series: <https://www.highpoint-tech.com/rr3700-overview>

RR2800 Series: <https://www.highpoint-tech.com/rr2800-overview>

RR800 Series: <https://www.highpoint-tech.com/rr800-overview>

Rocket 700 Series: <https://www.highpoint-tech.com/rocket700-series>

- d. Run the **.bin** file to install the driver package.

**sh rr37xx\_8xx\_28xx\_linux\_x86\_64\_src\_vxx.x.x\_xx\_xx\_xx.bin** or

**./ rr37xx\_8xx\_28xx\_linux\_x86\_64\_src\_vxx.x.x\_xx\_xx\_xx.bin**

```
[root@localhost home]# ./rr37xx_8xx_28xx_linux_x86_64_src_v1.23.13_23_01_16.bin
Verifying archive integrity... All good.
Uncompressing RR3740A/840A Linux Open Source package installer.....
.....
Checking and installing required toolchain and utility ...
Installing program make ... done
Installing program gcc ... done
Found program perl (/usr/bin/perl)
Found program wget (/usr/bin/wget)
```

- e. Follow the prompts to complete the driver installation.

```
SUCCESS: Driver is installed successfully for kernel 5.14.0-162.6.1.el9_1.x86_64
from Internet.
Please restart the system for the driver to take effect.
If you want to uninstall the driver from the computer, please run hptuninrr3740a
to uninstall the driver files.
[root@localhost home]#
```

## 6 Rebuilding Driver Module for System Update

When the system updates the kernel packages, the driver module rr3740a.ko should be built and installed manually before reboot.

Please refer to the README file distributed with HighPoint RR Series RAID Controller opensource package on how to build and install the driver module.

## 7 Appendix A

**Support command: help/info/quit/exit/create/delete**

- **Create Command**  
**Syntax**

Create Array Type (RAID0/RAID1/10/5/50) Member Disk list (1/1, 1/2|\*)  
Capacity (100|\*)

*Note:*

*The RR840/RR2840/RR3720/RR3740/RR3742 controllers can support RAID0/RAID1/10/5/50*

*The R710/R720 controllers can support RAID0/RAID1/RAID10*

**Examples**

```
<<< create RAID0
```

```
<<< create RAID0 *
```

```
<<< create RAID0 * *
```

Create RAID0 array with all disks and with maximum capacity.

```
<<< create RAID1 1/1, 1/3 10
```

Create RAID1 array with disk 1/1 and 1/3 and with 10GB capacity.

```
<<< create RAID10 *
```

Create RAID10 array with all disks and with maximum capacity.

```
<<< create RAID5 *
```

Create RAID5 array with all disks and with maximum capacity.

```
<<< create RAID50,3 1/1, 1/2, 1/3, 1/4, 1/5, 1/6
```

Create RAID50 array with disk 1/1, 1/2, 1/3, 1/4, 1/5, 1/6 and with sub member count 3 and with maximum capacity.

- **Delete Command**  
**Syntax**

```
delete {array ID}
```

- Examples**

```
<<< delete 1
```

Delete the first array from Logical device list.

```
<<< delete 2
```

Delete the second array from Logical device list.

- **Info Command**  
**Syntax**

```
info
```

Display physical device list and logical list

- **Exit Command**  
**Syntax**

```
Q/q/quit/exit
```

Quit the application

- **Help Command**  
**Syntax**

```
H/h/help
```

This is help message.