

RocketStor 6414AS/6418AS Setup Guide (Mac OS X)

Mar. 8, 2016
Revision 1.0
HighPoint Technologies, Inc.

Copyright

Copyright © 2016 HighPoint Technologies, Inc. This document contains materials protected by International Copyright Laws. All rights reserved. No part of this manual may be reproduced, transmitted or transcribed in any form and for any purpose without the express written permission of HighPoint Technologies, Inc.

Trademarks

Companies and products mentioned in this manual are for identification purpose only. Product names or brand names appearing in this manual may or may not be registered trademarks or copyrights of their respective owners. Backup your important data before using HighPoint's products and use at your own risk. In no event shall HighPoint be liable for any loss of profits, or for direct, indirect, special, incidental or consequential damages arising from any defect or error in HighPoint's products or manuals. Information in this manual is subject to change without notice and does not represent a commitment on the part of HighPoint.

Notice

Reasonable effort has been made to ensure that the information in this manual is accurate. HighPoint assumes no liability for technical inaccuracies, typographical, or other errors contained herein.

FCC Part 15 Class B Radio Frequency Interference statement

This equipment has been tested and found to comply with the limits for a Class B digital device, pursuant to part 15 of the FCC Rules. These limits are designed to provide reasonable protection against harmful interference in a residential installation. This equipment generates uses and can radiate radio frequency energy and, if not installed and used in accordance with the instructions, may cause harmful interference to radio communications. However, there is no guarantee that interference will not occur in a particular installation. If this equipment does cause harmful interference to radio or television reception, which can be determined by turning the equipment off and on, the user is encouraged to try to correct the interference by one or more of the following measures:

- Reorient or relocate the receiving antenna.
- Increase the separation between the equipment and receiver.
- Connect the equipment into an outlet on a circuit different from that to which the receiver is connected.
- Consult the dealer or an experienced radio/TV technician for help.

Modifications not expressly approved by the manufacturer could void the user's authority to operate the equipment under FCC rules.

This device complies with part 15 of the FCC Rules. Operation is subject to the following two conditions: (1) this device may not cause harmful interference, and (2) this device must accept any interference received, including interference that may cause undesired operation.

European Union Compliance Statement

This Information Technologies Equipment has been tested and found to comply with the following European directives:

- European Standard EN55022 (1998) Class B
- European Standard EN55024 (1998)

Install/Update Drivers

Installing Drivers on an Existing Operating System

Drivers provide a way for your operating system to communicate with your new hardware. Updating to the latest drivers ensures your product has the latest performance, stability, and compatibility improvements. Drivers are updated regularly at www.highpoint-tech.com.

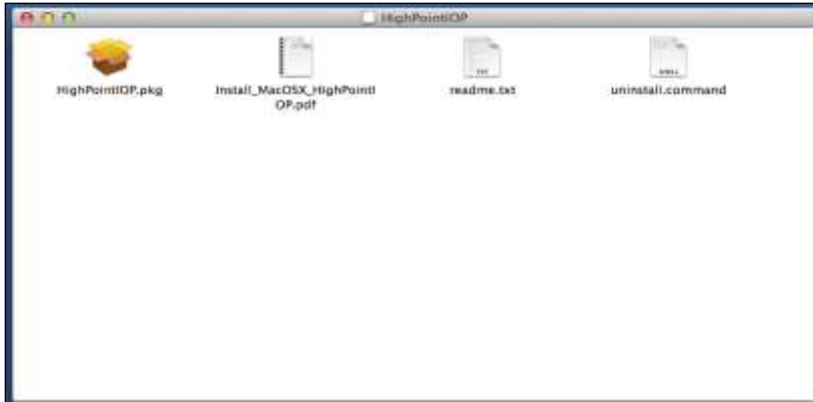
1. Obtain the latest driver online at www.hptmac.com > PCIe Controller Card > 6 Gb/s SAS/SATA RAID HBA > RocketRAID 4522 > Download
 - Navigate to your specific HBA controller page (Refer to **How to View HBA Properties** to find the model name)



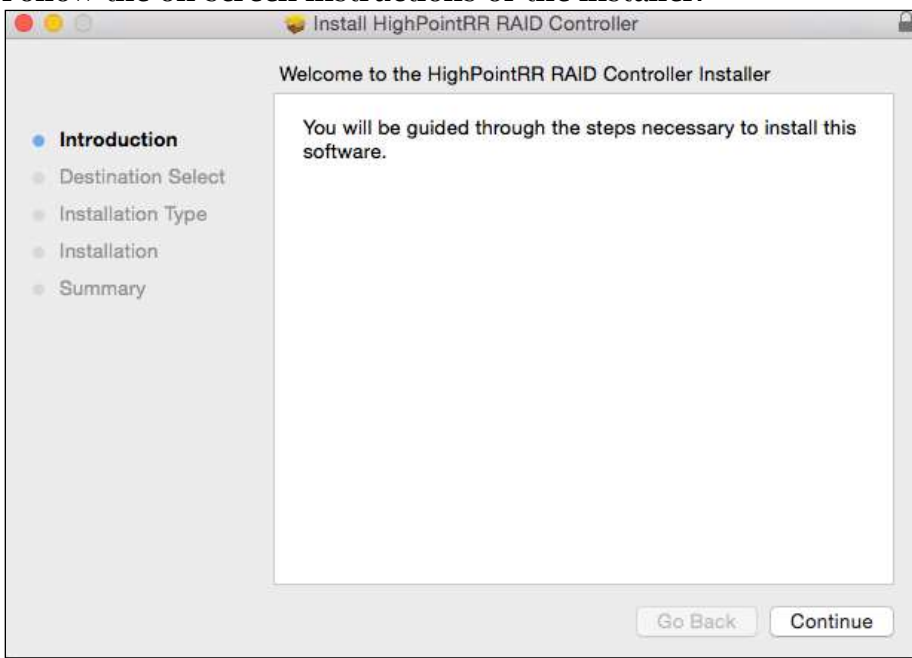
2. Click the downloaded file.



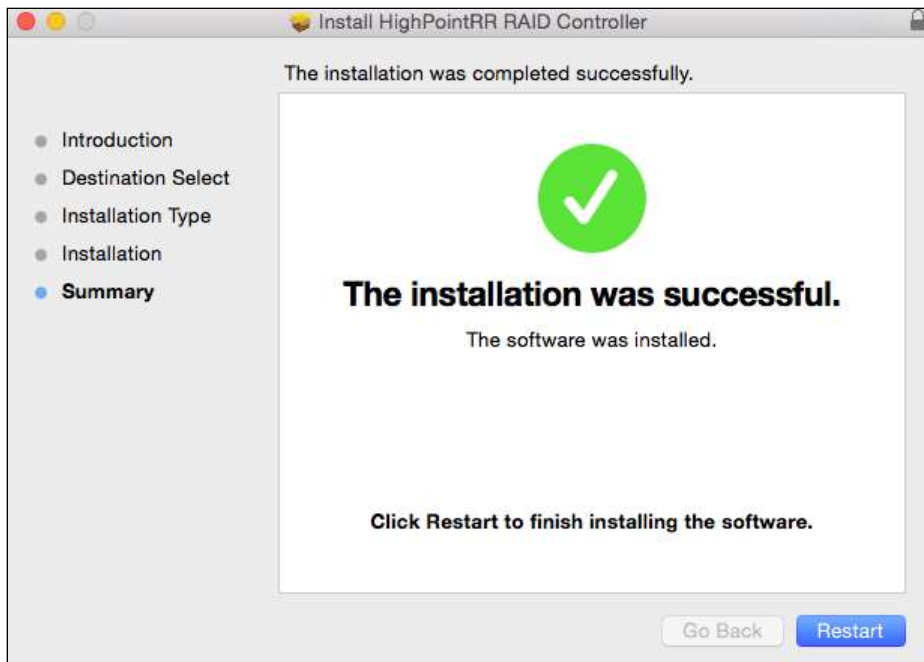
3. A mounted volume (eg. HighPointIOP) will appear on the desktop. Click the icon to open the volume.
4. Click the driver package to start installation (.pkg file)



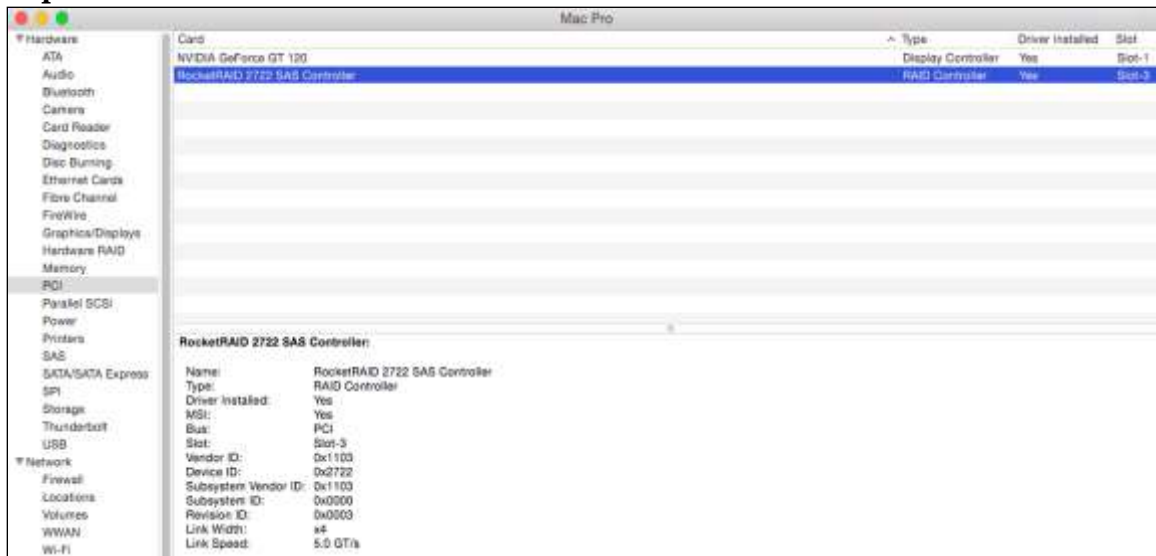
5. Follow the on-screen instructions of the installer.



6. **Reboot** computer for changes to take effect.



7. Make sure **Driver Installed** is **Yes**. Click the **Apple Icon** > **About this Mac** > **System Report** > **PCI** to check the driver status



Click **Apple Icon** > **About this Mac** > **System Report** > **PCI**

Install HighPoint RAID Management (WebGUI)

The HighPoint RAID Management (WebGUI) software is a useful tool used to create, maintain, and view your RAID arrays.

1. Download the latest WebGUI from our website www.hptmac.com > [PCIe Controller Card](#) > [6 Gb/s SAS/SATA RAID HBA](#) > [RocketRAID 4522](#) > [Download](#)
2. Double Click the downloaded Mac WebGUI file.



3. Double click the **HighPointWebGUI.pkg** to start the WebGUI installer.



4. Follow the installer's on-screen instructions to complete the WebGUI installation.
5. Double-click the HighPoint RAID Management desktop icon to start the WebGUI.



- Your default web browser will open and prompt for a username and password (Default username: **RAID** / password: **hpt**). Note the username and password are case-sensitive.

Uninstalling HighPoint RAID Management (WebGUI)

- Navigate to /Applications/HPTWEBGUI/uninstall.
- Click on the uninstall script.
- Type in the Administrator password when prompted.

Quick Way to build RAID 5 Storage Array

- Double-click the RAID management software ICON on the desktop to log into the WebGUI.
- Click on the **Logical** tab at top of the interface menu – this will display a list of available drives (Physical Device Information). Make sure all installed drives are properly detected.

Controller(1): 4522

HighPoint
Technologies, Inc.

Global View	Physical	Logical	Setting	Event	SHI	Recover	Logout	Help																																																																																																																																		
<div style="display: flex;"> <div style="width: 20%; border-right: 1px solid #ccc; padding-right: 5px;"> <p>Create Array</p> <p>Spare Pool</p> <p>Logical Device</p> <p>Rescan</p> <p>Beeper Mute</p> </div> <div style="width: 80%;"> <table border="1"> <thead> <tr> <th colspan="8">Logical Device Information</th> </tr> <tr> <th>Name</th> <th>Type</th> <th>Capacity</th> <th>BlockSize</th> <th>SectorSize</th> <th>OS Name</th> <th>Status</th> <th></th> </tr> </thead> <tbody> <tr><td>Device_1_1</td><td>Hard Disk</td><td>4.00 TB</td><td></td><td></td><td>HPT DISK 0_0</td><td>Legacy</td><td></td></tr> <tr><td>Device_1_2</td><td>Hard Disk</td><td>1.00 TB</td><td></td><td></td><td>HPT DISK 0_1</td><td>Legacy</td><td></td></tr> <tr><td>Device_1_3</td><td>Hard Disk</td><td>4.00 TB</td><td></td><td></td><td>HPT DISK 0_2</td><td>Legacy</td><td></td></tr> <tr><td>Device_1_4</td><td>Hard Disk</td><td>4.00 TB</td><td></td><td></td><td>HPT DISK 0_3</td><td>Legacy</td><td></td></tr> <tr><td>Device_1_5</td><td>Hard Disk</td><td>3.00 TB</td><td></td><td></td><td>HPT DISK 0_4</td><td>Legacy</td><td></td></tr> <tr><td>Device_1_6</td><td>Hard Disk</td><td>3.00 TB</td><td></td><td></td><td>HPT DISK 0_5</td><td>Legacy</td><td></td></tr> <tr><td>Device_1_7</td><td>Hard Disk</td><td>4.00 TB</td><td></td><td></td><td>HPT DISK 0_6</td><td>Legacy</td><td></td></tr> <tr><td>Device_1_8</td><td>Hard Disk</td><td>4.00 TB</td><td></td><td></td><td>HPT DISK 0_7</td><td>Legacy</td><td></td></tr> </tbody> </table> <table border="1"> <thead> <tr> <th colspan="5">Physical Device Information</th> </tr> <tr> <th>Location</th> <th>Model</th> <th>Capacity</th> <th>Max Free</th> <th></th> </tr> </thead> <tbody> <tr><td>1/1</td><td>WDC WD4000FYYZ-01UL1B0-WD-WMC130032417</td><td>4.00 TB</td><td>0.00 GB</td><td></td></tr> <tr><td>1/2</td><td>WDC WD1003FBYZ-010FB0-WD-WCAW37342146</td><td>1.00 TB</td><td>0.00 GB</td><td></td></tr> <tr><td>1/3</td><td>WDC WD4000FYYZ-01UL1B0-WD-WMC130032453</td><td>4.00 TB</td><td>0.00 GB</td><td></td></tr> <tr><td>1/4</td><td>WDC WD4000FYYZ-01UL1B0-WD-WMC130016977</td><td>4.00 TB</td><td>0.00 GB</td><td></td></tr> <tr><td>1/5</td><td>ST3000VX000-9YW166-S1F0RW6H</td><td>3.00 TB</td><td>0.00 GB</td><td></td></tr> <tr><td>1/6</td><td>ST3000VX000-9YW166-W1F12AA5</td><td>3.00 TB</td><td>0.00 GB</td><td></td></tr> <tr><td>1/7</td><td>HGST HUS724040ALA640-PN2331PAGKSJMW</td><td>4.00 TB</td><td>0.00 GB</td><td></td></tr> <tr><td>1/8</td><td>HGST HUS724040ALA640-PN2331PAGL03NW</td><td>4.00 TB</td><td>0.00 GB</td><td></td></tr> </tbody> </table> </div> </div>									Logical Device Information								Name	Type	Capacity	BlockSize	SectorSize	OS Name	Status		Device_1_1	Hard Disk	4.00 TB			HPT DISK 0_0	Legacy		Device_1_2	Hard Disk	1.00 TB			HPT DISK 0_1	Legacy		Device_1_3	Hard Disk	4.00 TB			HPT DISK 0_2	Legacy		Device_1_4	Hard Disk	4.00 TB			HPT DISK 0_3	Legacy		Device_1_5	Hard Disk	3.00 TB			HPT DISK 0_4	Legacy		Device_1_6	Hard Disk	3.00 TB			HPT DISK 0_5	Legacy		Device_1_7	Hard Disk	4.00 TB			HPT DISK 0_6	Legacy		Device_1_8	Hard Disk	4.00 TB			HPT DISK 0_7	Legacy		Physical Device Information					Location	Model	Capacity	Max Free		1/1	WDC WD4000FYYZ-01UL1B0-WD-WMC130032417	4.00 TB	0.00 GB		1/2	WDC WD1003FBYZ-010FB0-WD-WCAW37342146	1.00 TB	0.00 GB		1/3	WDC WD4000FYYZ-01UL1B0-WD-WMC130032453	4.00 TB	0.00 GB		1/4	WDC WD4000FYYZ-01UL1B0-WD-WMC130016977	4.00 TB	0.00 GB		1/5	ST3000VX000-9YW166-S1F0RW6H	3.00 TB	0.00 GB		1/6	ST3000VX000-9YW166-W1F12AA5	3.00 TB	0.00 GB		1/7	HGST HUS724040ALA640-PN2331PAGKSJMW	4.00 TB	0.00 GB		1/8	HGST HUS724040ALA640-PN2331PAGL03NW	4.00 TB	0.00 GB	
Logical Device Information																																																																																																																																										
Name	Type	Capacity	BlockSize	SectorSize	OS Name	Status																																																																																																																																				
Device_1_1	Hard Disk	4.00 TB			HPT DISK 0_0	Legacy																																																																																																																																				
Device_1_2	Hard Disk	1.00 TB			HPT DISK 0_1	Legacy																																																																																																																																				
Device_1_3	Hard Disk	4.00 TB			HPT DISK 0_2	Legacy																																																																																																																																				
Device_1_4	Hard Disk	4.00 TB			HPT DISK 0_3	Legacy																																																																																																																																				
Device_1_5	Hard Disk	3.00 TB			HPT DISK 0_4	Legacy																																																																																																																																				
Device_1_6	Hard Disk	3.00 TB			HPT DISK 0_5	Legacy																																																																																																																																				
Device_1_7	Hard Disk	4.00 TB			HPT DISK 0_6	Legacy																																																																																																																																				
Device_1_8	Hard Disk	4.00 TB			HPT DISK 0_7	Legacy																																																																																																																																				
Physical Device Information																																																																																																																																										
Location	Model	Capacity	Max Free																																																																																																																																							
1/1	WDC WD4000FYYZ-01UL1B0-WD-WMC130032417	4.00 TB	0.00 GB																																																																																																																																							
1/2	WDC WD1003FBYZ-010FB0-WD-WCAW37342146	1.00 TB	0.00 GB																																																																																																																																							
1/3	WDC WD4000FYYZ-01UL1B0-WD-WMC130032453	4.00 TB	0.00 GB																																																																																																																																							
1/4	WDC WD4000FYYZ-01UL1B0-WD-WMC130016977	4.00 TB	0.00 GB																																																																																																																																							
1/5	ST3000VX000-9YW166-S1F0RW6H	3.00 TB	0.00 GB																																																																																																																																							
1/6	ST3000VX000-9YW166-W1F12AA5	3.00 TB	0.00 GB																																																																																																																																							
1/7	HGST HUS724040ALA640-PN2331PAGKSJMW	4.00 TB	0.00 GB																																																																																																																																							
1/8	HGST HUS724040ALA640-PN2331PAGL03NW	4.00 TB	0.00 GB																																																																																																																																							

Note:

Single or new (unused) drives will be labeled as Legacy disks. Legacy disks can be used to create a new RAID array.

3. Click **Create Array**

Specify the RAID Level (RAID 5 or 6) using the **Array Type** drop-down menu. Next, select **Quick Init.** from the **Initialization Method** drop-down menu. Leave all other parameters at the **Default** setting, and click the **Create** button to create the array.

The screenshot shows the 'Create Array' configuration page. The 'Logical' tab is selected. The 'Array Type' is set to 'RAID 5' and the 'Initialization Method' is set to 'Quick Init'. The 'Cache Policy' is 'Write Back', 'Block Size' is '64K', and 'Number of RAID5 member disks' is '3'. A table of available disks is shown with checkboxes for selection. The 'Create' button is highlighted with an orange box.

Location	Model	Capacity	Max Free
1/1	WDC WD4000FYYZ-01UL1B0-WD-WMC130032417	4.00 TB	0.00 GB
1/2	WDC WD1003FBYZ-010FB0-WD-WCAW37342146	1.00 TB	0.00 GB
1/3	WDC WD4000FYYZ-01UL1B0-WD-WMC130032453	4.00 TB	0.00 GB
1/4	WDC WD4000FYYZ-01UL1B0-WD-WMC130016977	4.00 TB	0.00 GB
1/5	ST3000VX000-9YW166-S1FORW6H	3.00 TB	0.00 GB
1/6	ST3000VX000-9YW166-W1F12AA5	3.00 TB	0.00 GB
1/7	HGST HUS724040ALA640-PN2331PAGKSJMW	4.00 TB	0.00 GB
1/8	HGST HUS724040ALA640-PN2331PAGL03NW	4.00 TB	0.00 GB

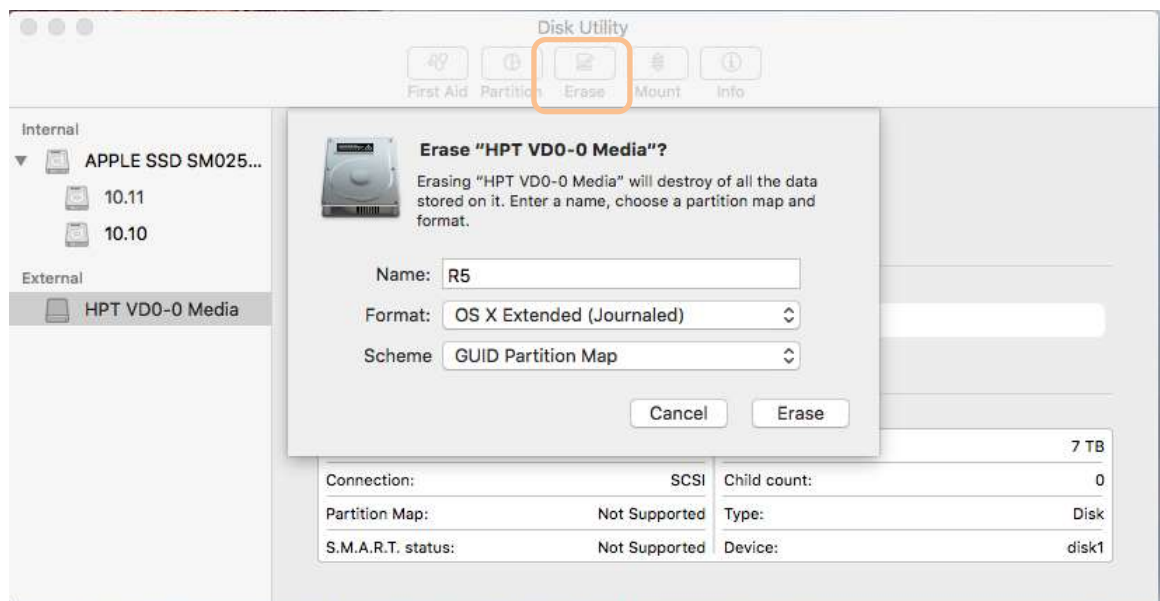
Note:

Quick Initialization is the best option for creating arrays with new or unused drives.

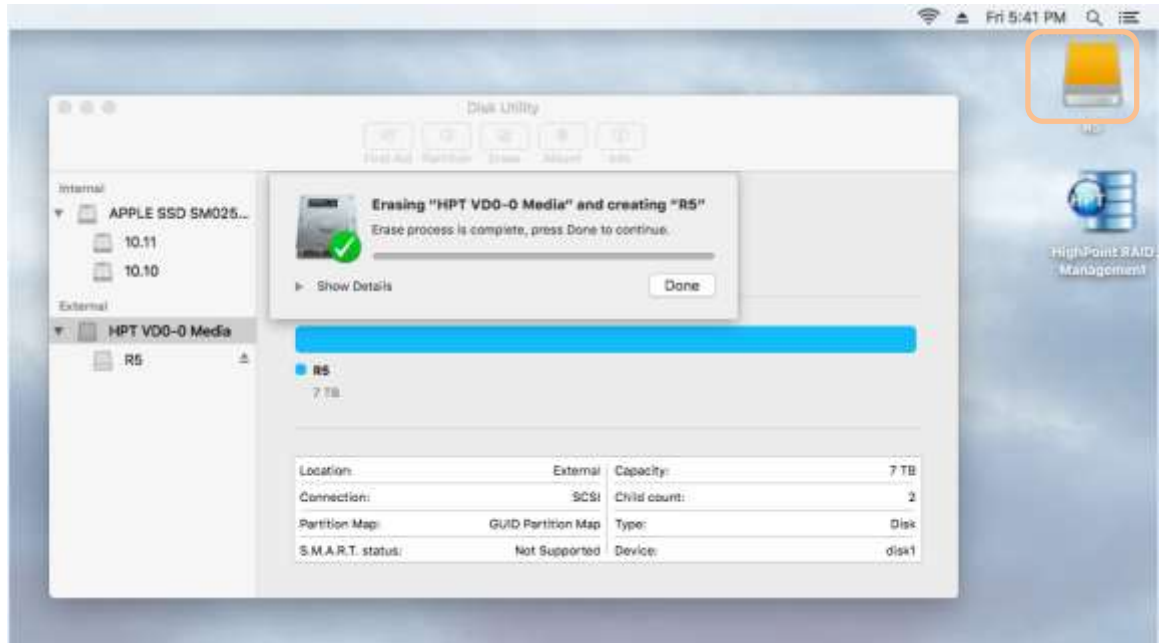
4. Once the array has been created, a new device should be displayed under **Logical Device Information**. OS X will detect the RAID array and display the following message:



- Click the Initialize button to run Disk Utility. Use the Erase button and name the new disk volume.



- After the array has been erased, the new RAID volume will be detected by the Mac system, and be accessible via the desktop icon.



Contacting Technical Support

If you require assistance, or have questions about any HighPoint product or solution, please submit a support ticket online at <http://www.highpoint-tech.com/websupport/>.

You may also call us during our regular business hours:
Monday - Friday (Excluding Holidays), 9 AM to 6 PM (PST)
Phone: (408) 240-6108