

How do I install Windows 7 ?

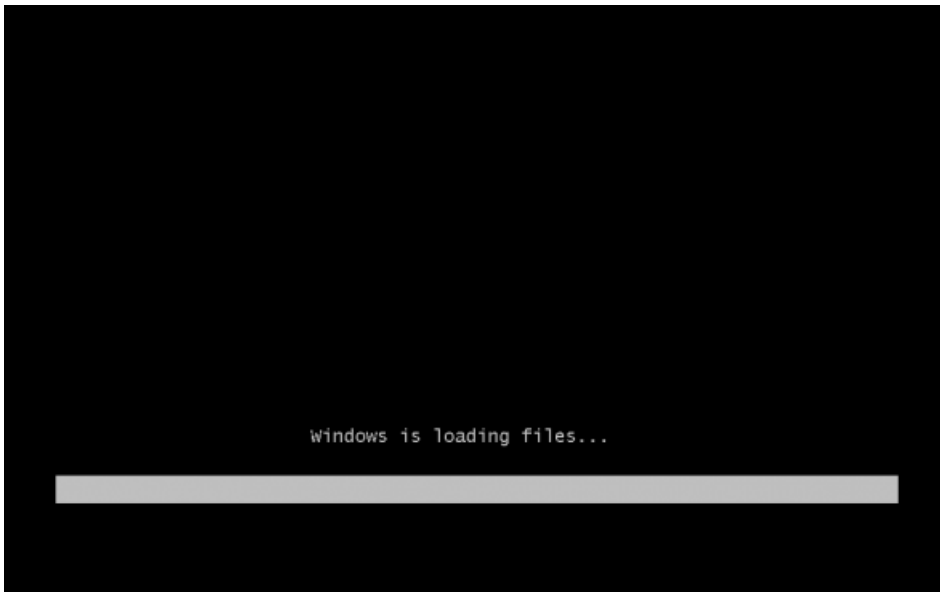
Important: should you already have an operating system on your computer, be aware that all the data will be deleted during the installation process (this involves all data being lost, so plan to save your data beforehand).

To install the Windows 7 operating system, you must first burn the ISO file provided by us to a DVD or create a bootable USB stick.

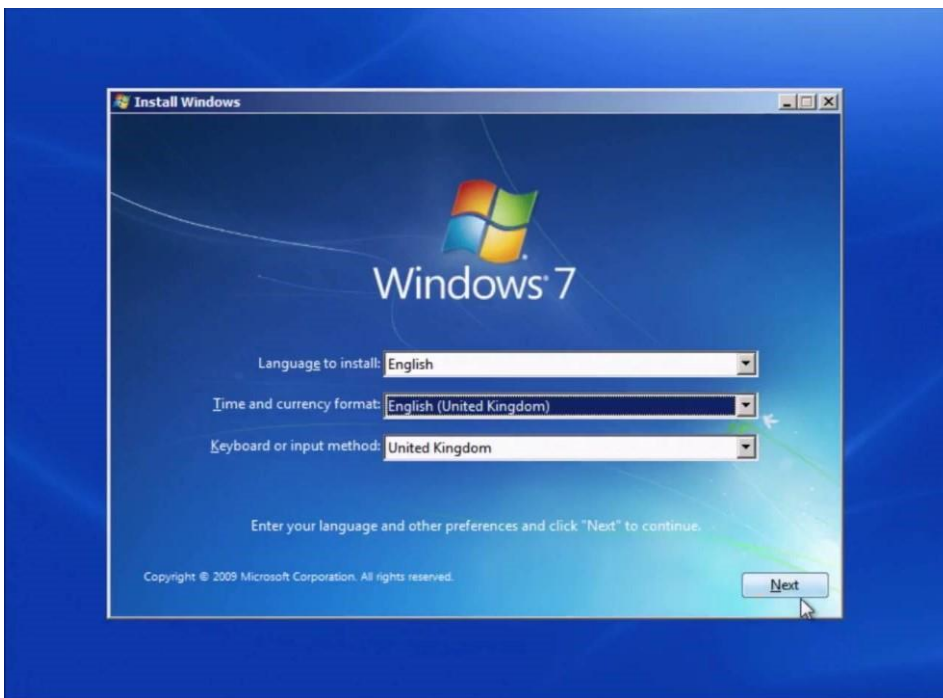
You must now change your computer's boot order in the BIOS so that the system starts from the boot medium you have created and then you can start installing the operating system.

The BIOS can be accessed by pressing one of the following buttons while the computer starts: Delete, F2, F12, F1, F8, ESC, F10. Ensure that the medium is listed first in the "Boot Priority" or "Boot" menu.

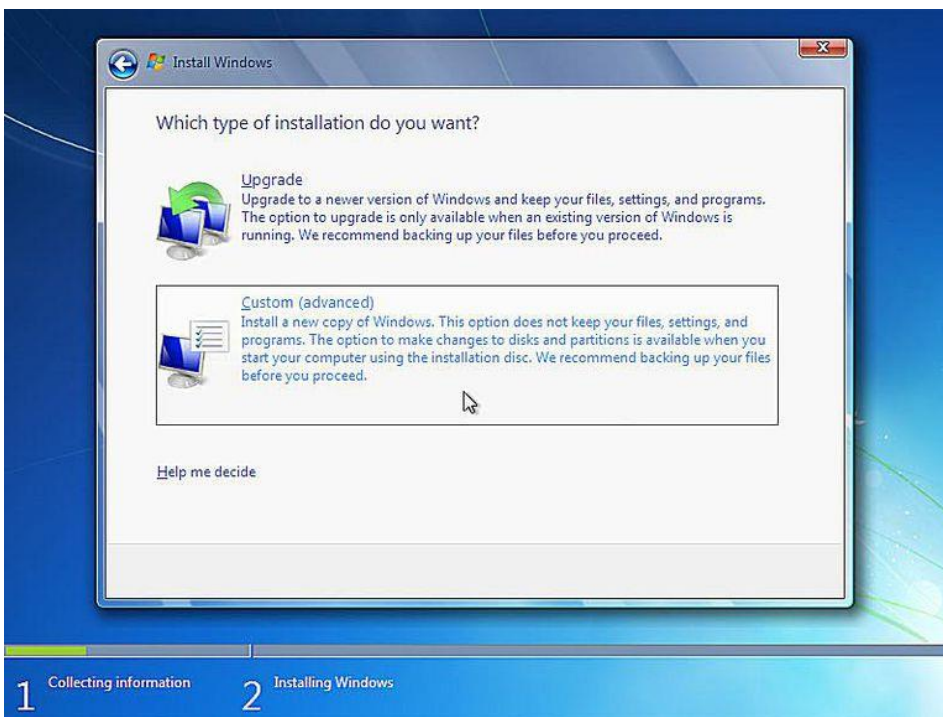
Important: do not change any other settings in the BIOS. These can harm your system.



After a loading stage, the operating system will begin to install. Set the installation language, time and keyboard in the desired language and click Next.

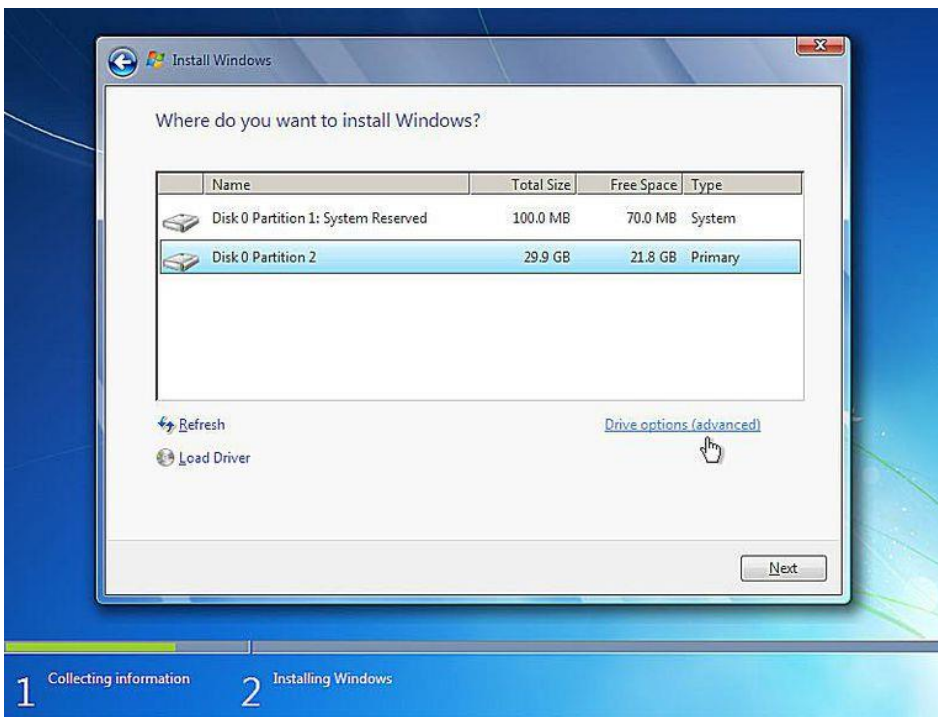


To reinstall the operating system, you must select Custom (Advanced).



In the next window, select the hard disk where you want the operating system to be installed. Select the appropriate hard disk and click Next.

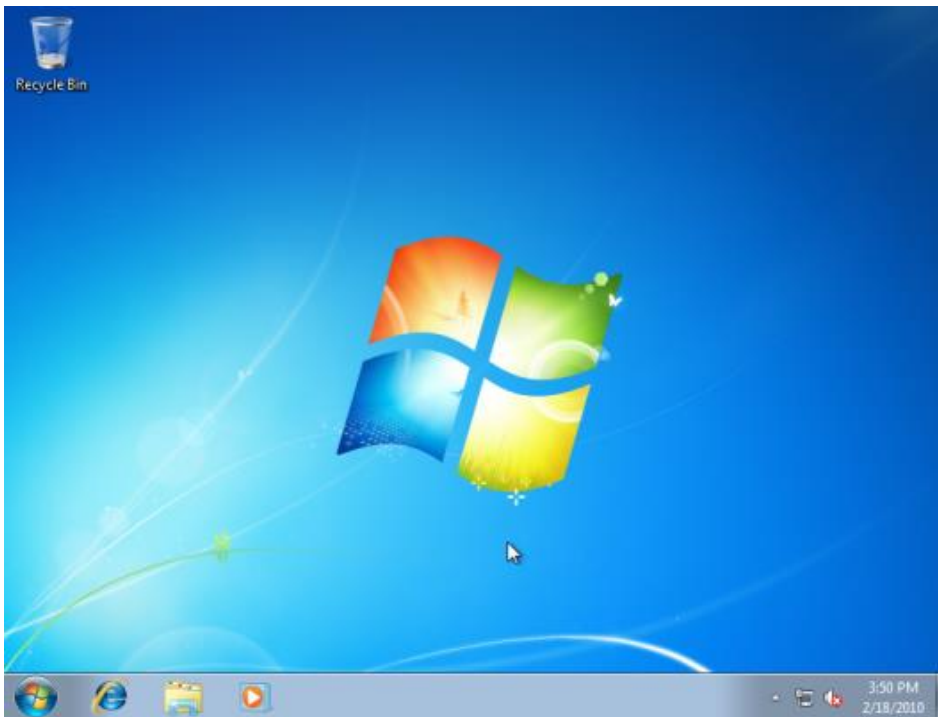
Important: if there is already an operating system on the computer, you can erase the existing data by clicking "Delete" and install a new operating system. (This step will delete all data on the disk - consider backing it up first)



After selecting the hard disk, the operating system will begin to install.

At this point, you must enter your user profile, including password, with which you would like to log into your new operating system.

Next, continue the setup process and complete setup.



After successfully installing, you can use your new operating system.

You should also return your boot order priority back to normal in the BIOS otherwise your computer will boot up from the disk or USB stick if either of them is inserted in the computer during startup.