

Using GCU – Gedcom Comparison Utility

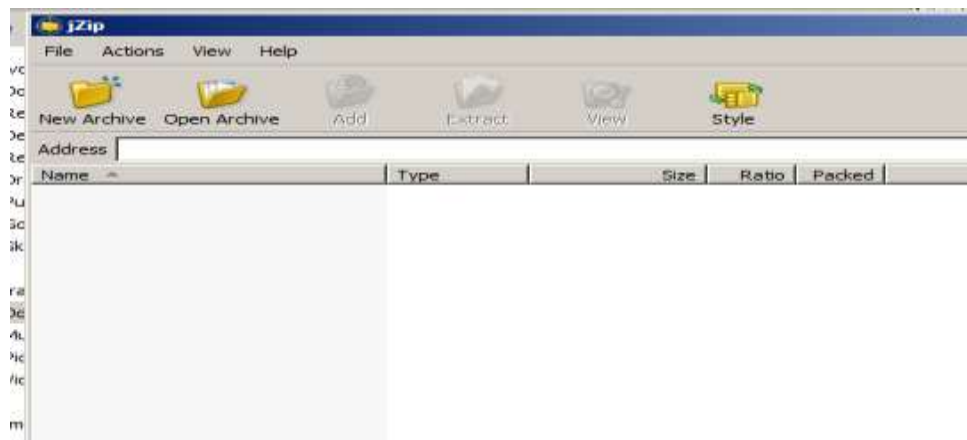
Download your gedcoms from FTDNA. Directions are under the Methodology tab at <http://DNAadoption.com>. Once you have worked as many Gedcoms as you can, you need to get a list of the Surnames from those GEDCOMS.

You can get this by going to Rob's new web site <http://www.dnagedcom.com/> and downloading the GedComUtility. You may get a security message, if you do, use the down arrow at the right and choose to keep the file. The program may also ask you whether you want to Run or Save the file. Save it at this point.

Once the GCU utility downloads, then unzip it into a folder that I call **util** in one of your document folders. If you have a zip program already installed then just click on the file. Substitute your preferred folder name for util if you wish.

If you do not have a previously installed program to unzip files, then you unzip it by downloading an unzipping program. I use Jzip. It is free.

Open Jzip for example and select the file to unzip where it says Open Archive.



It will ask you where to unzip it. Direct it to your util directory that you made above.

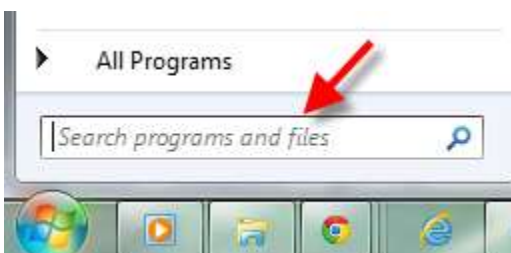
After you unzip it then you are ready to go.

Gedcoms all end in .ged. Copy all your gedcoms that you want to include in an analysis into the util folder. We have run it with a hundred and fifty files or with two. The more files and the bigger, the longer it takes

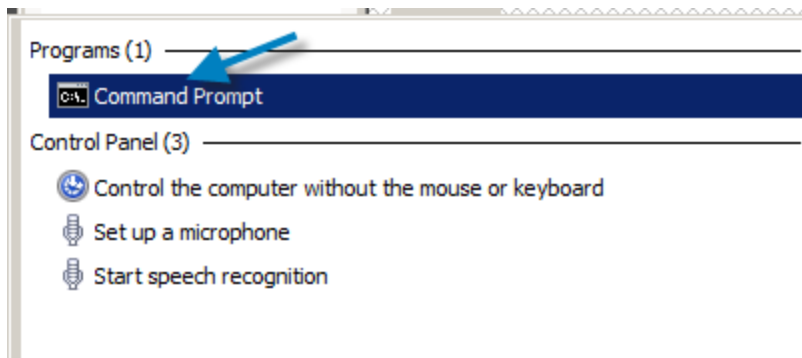
Instructions for Vista and XP and for Win 8 are addendums to this document

[Win 8 users](#) and [Win XP and Vista](#) users go to appropriate Appendix at this point.

On the Start Menu in Win 7 enter Command in the Search space. (red arrow), It brings up the Command Prompt program (blue arrow). You will find it convenient to right click on the Command Prompt line, and choose the option Pin to Start Menu (yellow arrow) then you never have to go looking for it again. Pictured below:

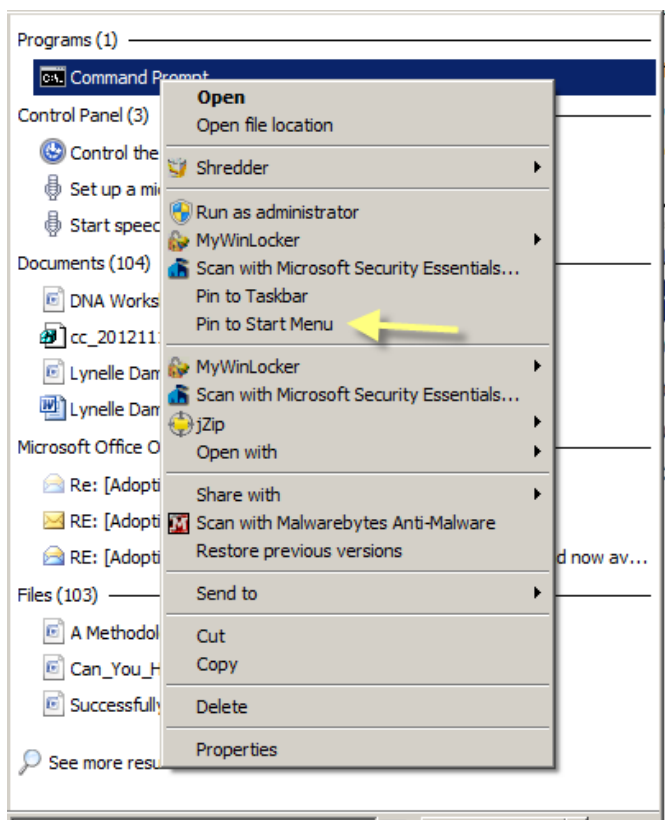


Enter Command in that space.

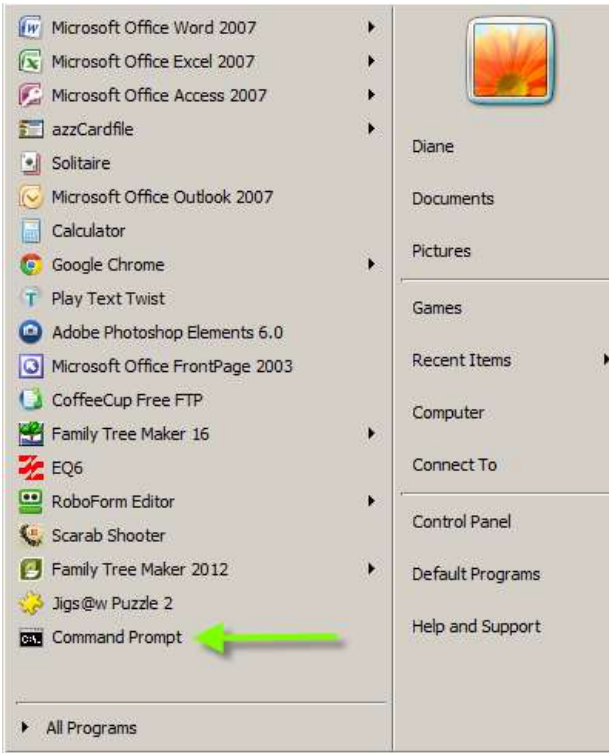


A list of programs and files that meet that search criteria will come up. Choose Command Prompt (Blue arrow)

This is a personal choice. If you want to have it show as an option on your Start Menu, right click on the Command Prompt (Blue Arrow above) and choose Pin to Start Menu (Yellow arrow below)



Now every time you bring up the Start Menu, the program will be there to click on to start it (green arrow)



Click on the Command Prompt line as noted above, and a black window opens up. It will look like this prompt but vary if you have another operating system. This is for Win 7.

-----**Win 8 users resume reading here**

Now the prompt will read

```
C:\User\Diane>
```

To go to your util directory you would type `cd documents\util` after the `>`

Now the prompt will read

```
C:\User\Diane\documents\util
```

If you were to view this folder through the Windows interface you will find it as a folder under My Documents.

Now you can join back into the regular document where it talks about starting to use the gedcomutility.

*******Win XP and Vista Users resume reading here**

APPENDIX of Commands

These are the commands you can use with the gedcomutility

-COMPDIR .	GCU space dash Compdir space dot	Finds exact matches among you gedcoms	Output into file match.csv in the same directory where you an the command
-SURLIST .	CGU space dash surlist space dot	Finds list of all surnames in your gedcoms	Output into file surname.csv in the same directory
-SURNAME .	GCU space dash surname space dot space surname you are looking for >output file name OR (GCU space dash surname space dot space brown >brown.,csv	Gives details on everyone in the gedcom with the last name of Brown	The file you created brown.csv will be in the util diectory
-Birth	GCU space dash birth space dot space place you are looking for >output file name OR (GCU space dash birth space dot space henrico >henrico.,csv NOTE it will take only one word, so use JERSEY for New Jersey etc.	Gives details on everyone in the gedcom born in Henrico County Virginia	The file you created henrico.csv will be in the util directory

[Appendix – Windows XP and Vista Instructions](#)

Choose Run from your Start Menu. If it does not have it, then go to the Accessories Folder under All Programs and Find Run Command Line. If you choose Run, enter the word Command in the blank that comes up

The command prompt in the black DOS window will look like this:

C:\DOCUME~1\OWNER\MYDOCU~1 or it may look like this C:\DOCUME~1\OWNER\

You still get to the appropriate directory by adding the command at the end of the prompt `cd MYDOCU~1\util`

Or if your prompt looks like the first example add the command `cd util`.

Then return to the ***** above to resume learning about this utility

[Appendix – Windows 8](#)

To get the command prompt in Windows 8, go to the Window that displays all of your icons. Just start typing the word `command` and the black screen will come up. You do not need a blank to type it in.

Return to -----

Above to resume learning about this utility