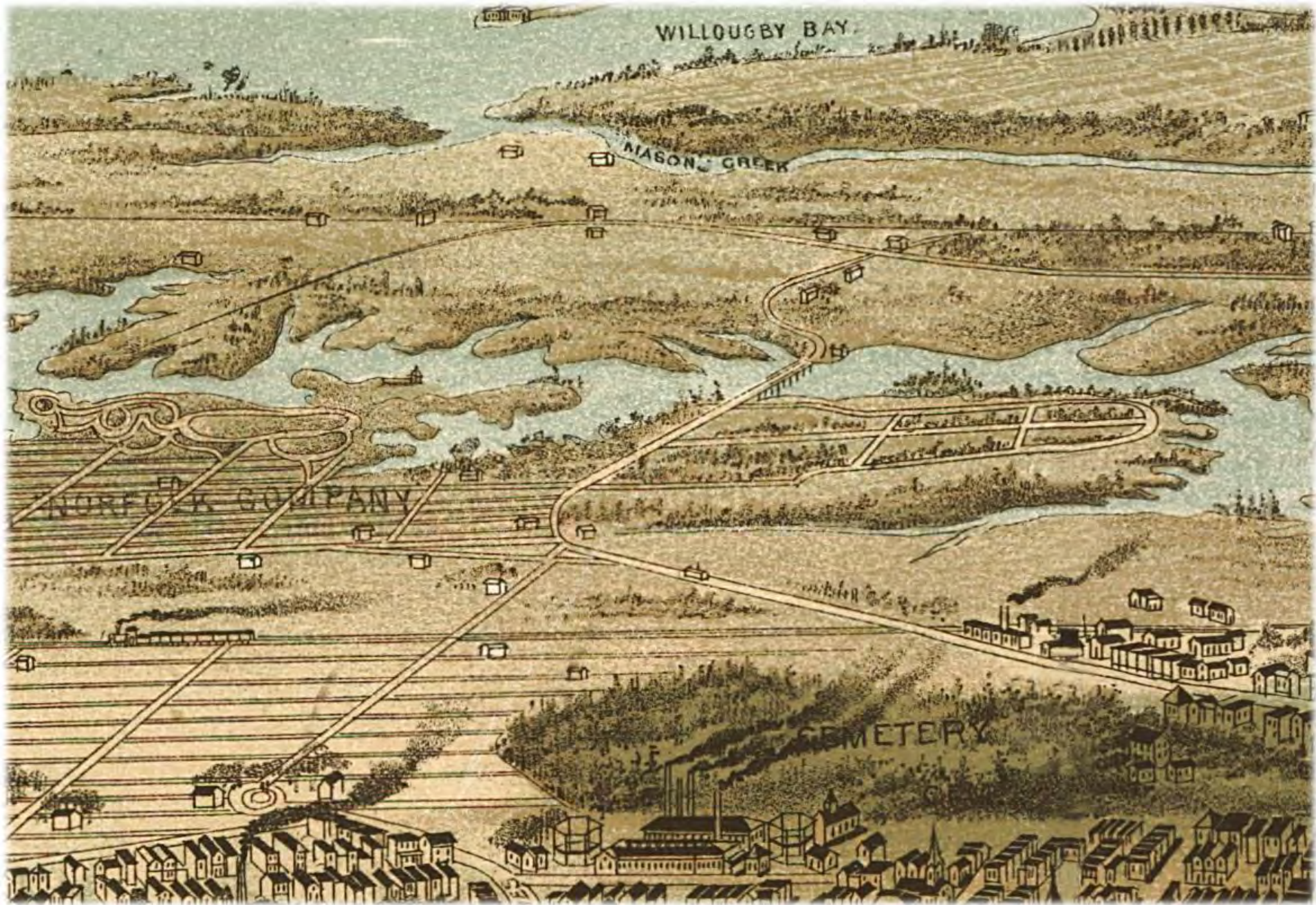


A detailed historical map of Norfolk, Virginia, showing the James River and surrounding areas. The map includes labels for various points and locations such as Willoughby's Pt., Lambert's Pt., and Portsmouth. The title 'The History of Wards Corner Norfolk, Virginia' is overlaid on the map in a large, bold, black font.

The History of Wards Corner Norfolk, Virginia

Robert B. Hitchings

Sargeant Memorial Collection
Norfolk Public Library



Map of Wards Corner - 1892



Wards Corner - 1930



Wards Corner, Mr. A. C. Ward's store in 1926.
Little Creek Road and Granby St



Tegg's Log Cabin - Built 1926



Tegg's Log Cabin (Barbecue) Wards Corner. Enlargement of his business in 1934. Owner Mr. J. Duell Tegg.



Looking North on Granby Street at Wards



Wards Corner Looking North at Railroad crossing



Wards Corner - 1955

"The Times Square Of The South"

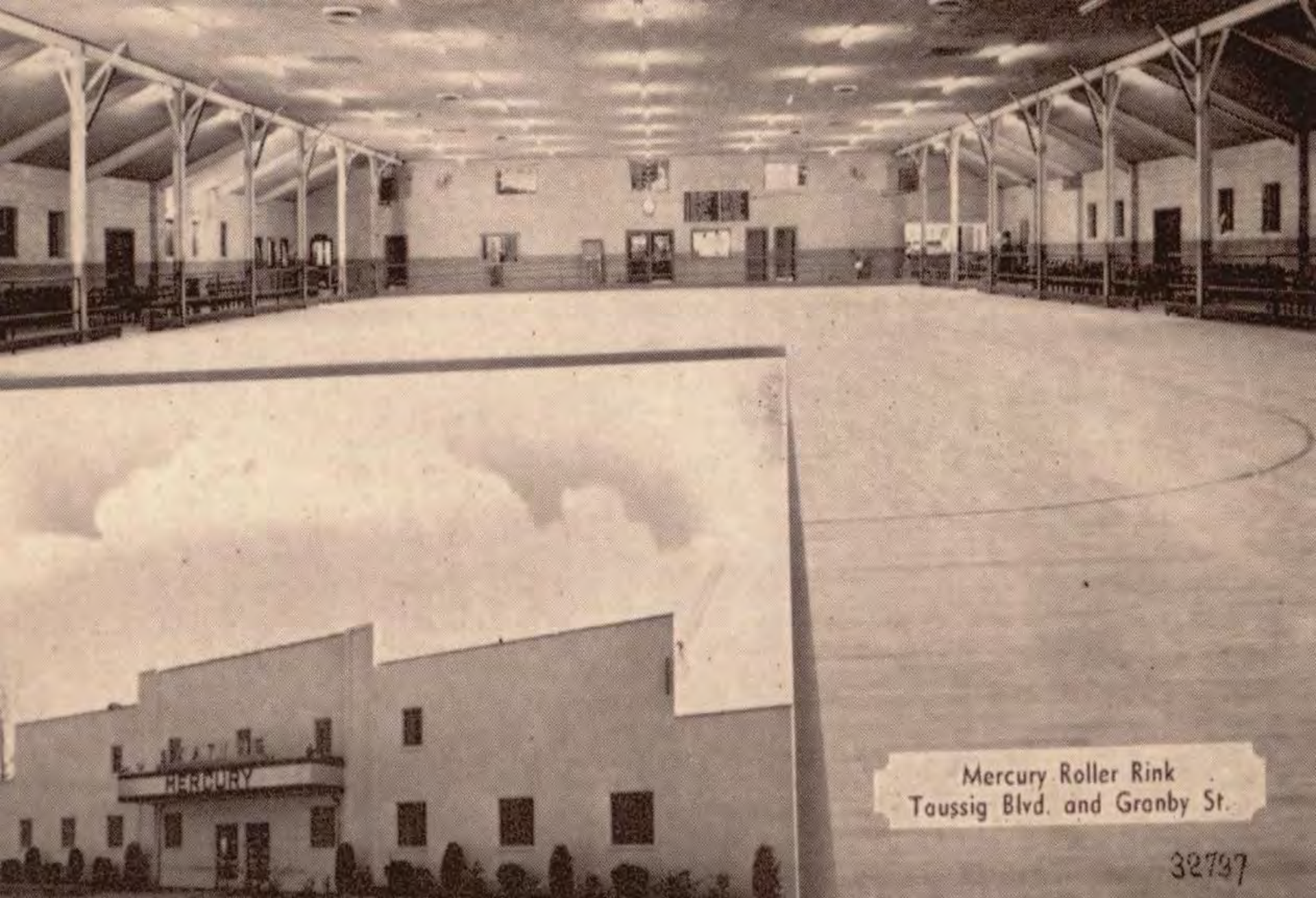


W A R D S

C O R N E R

N O R F O L K ,

V I R G I N I A



Mercury Roller Rink
Taussig Blvd. and Granby St.

32797

The Old Mercury Roller Rink, Toussig Blvd



Wards Corner area - April 3, 1982



Wards Corner - 1975



Granby Street, House between Seekel & Filbert St

NORFOLK compass

Vol. 11, No. 53

Published as part of The Ledger-Star and The Virginian-Pilot

July 7, 1985



Despite setbacks and increased competition, Wards Corner survives

Staff photos by Mort Fryman

Wards Corner: life at the crossroads



The Turtle Airplane a landmark sat at the corner of Granby and Taussig Blvd for many years. 1953-1977.



Denby Methodist Church, on Little Creek Road - 1915



Wards Corner - 2010



Granby Street Bridge - 1908



Granby Street Bridge looking North - 1977



Wards Corner 1955



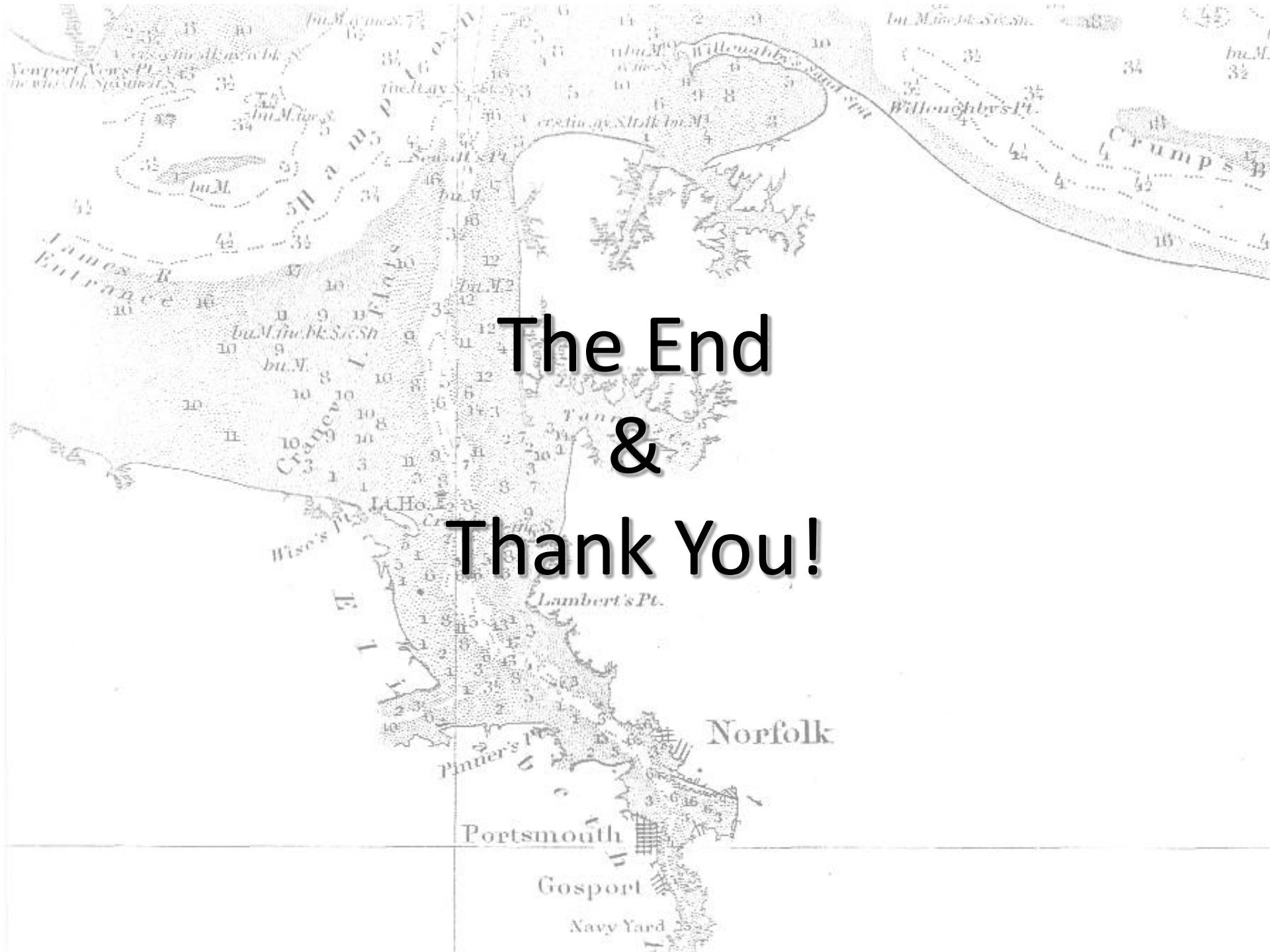
Wards Corner - 2010



Go Go Green Gifford



Green Gifford



The End
&
Thank You!