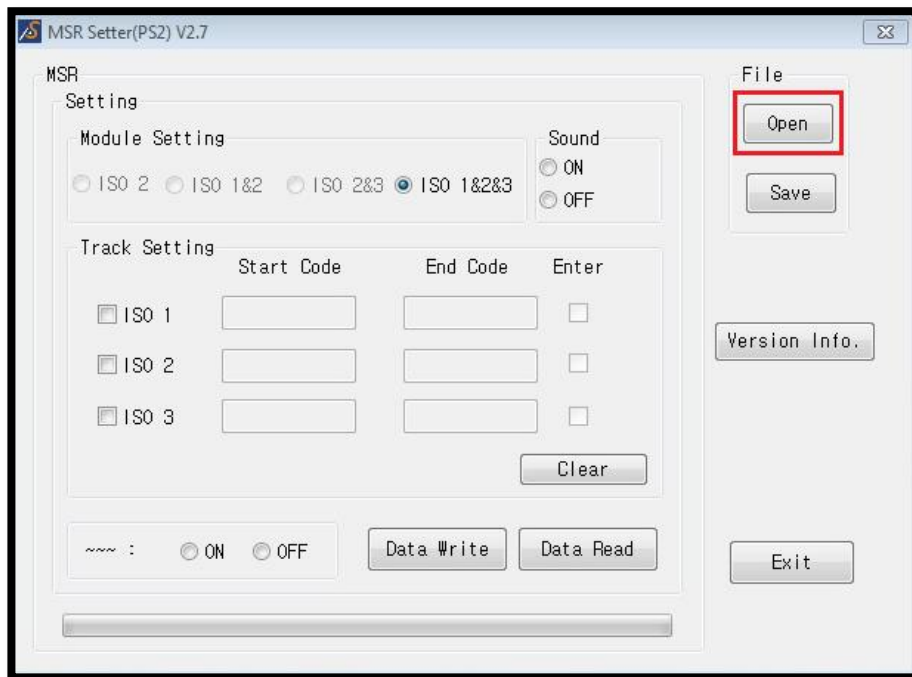


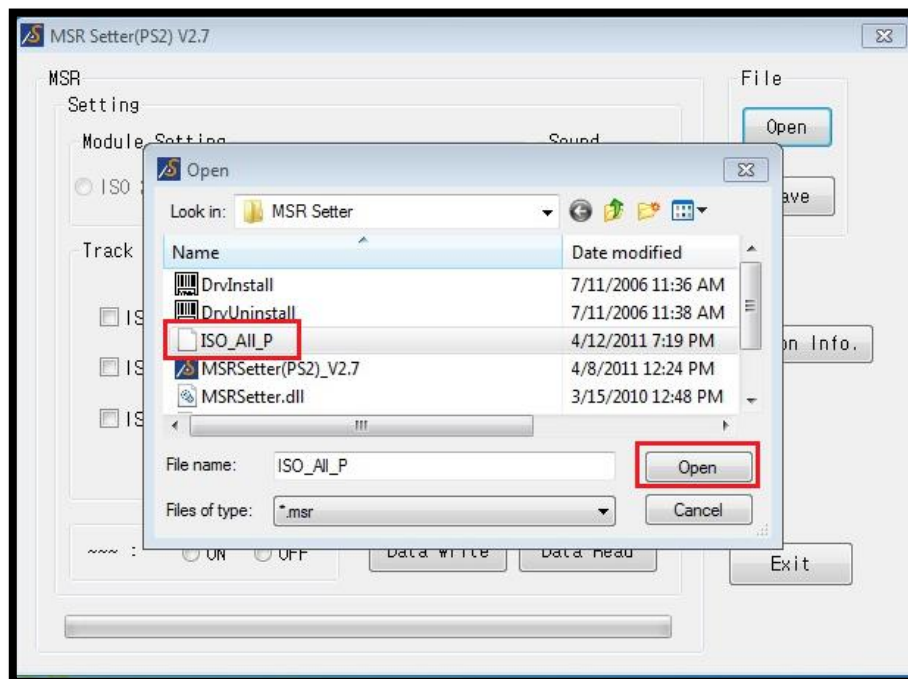
MSRSetter2.7 Setting Manual

1. Click the Open Button.



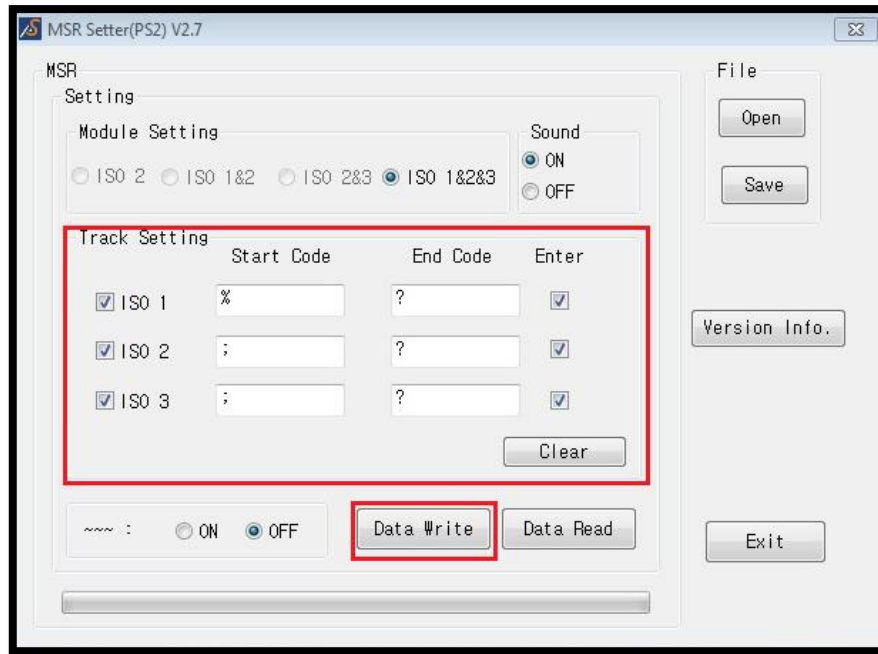
2. Search the "ISO_All_P.msr" File. And then Click the Open Button.

(you can find ISO_All_P.msr File in MSR Setter Folder.)



3. Check the Track Setting(1,2,3Track)

Click the Date Write Button



4. Click the OK button



5. Test the MSR Track using Notepad.