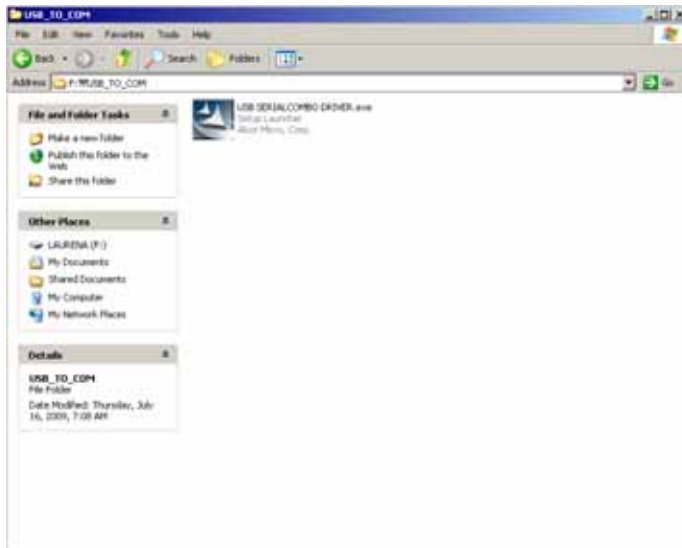
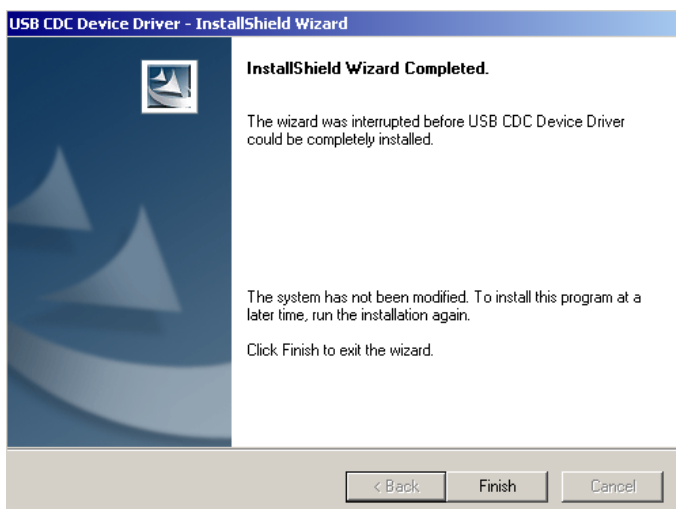
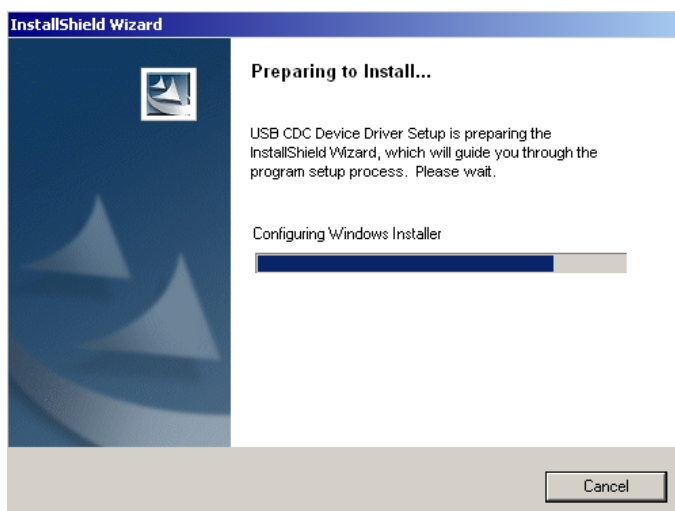


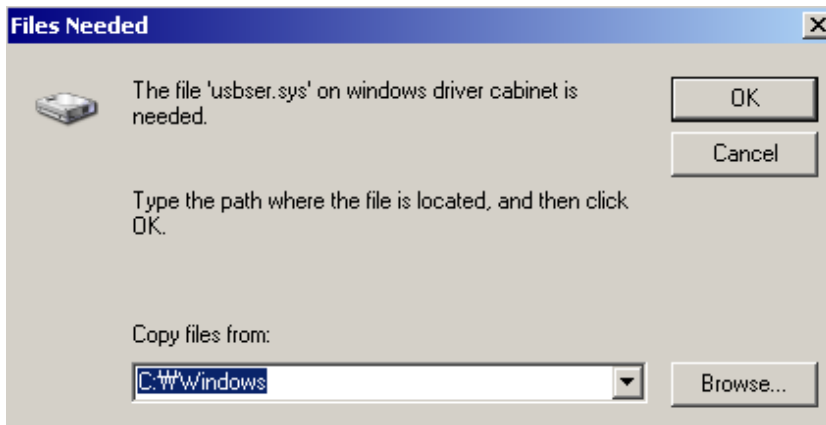
## Combo (USB + Serial) Driver Installation Guide



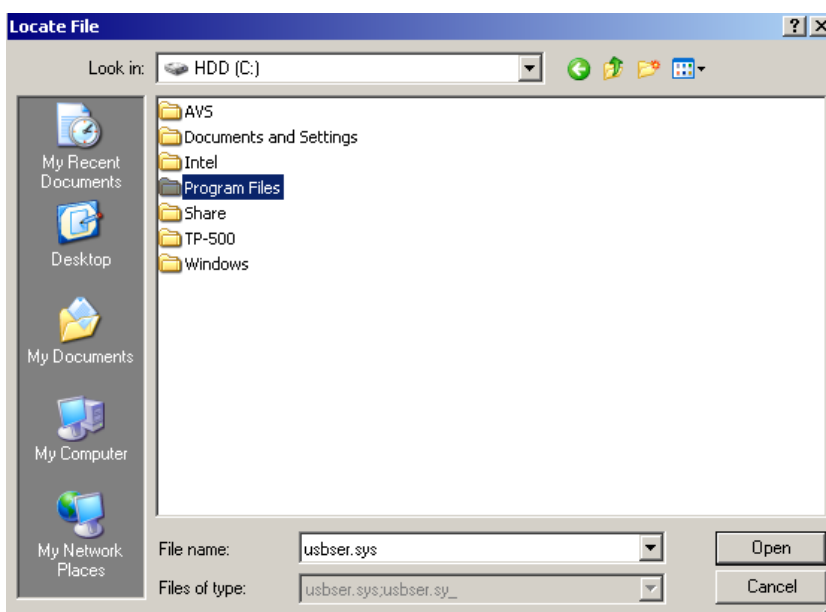
Please execute a file named with  
“USB SERIAL COMBO DRIVER.exe”.



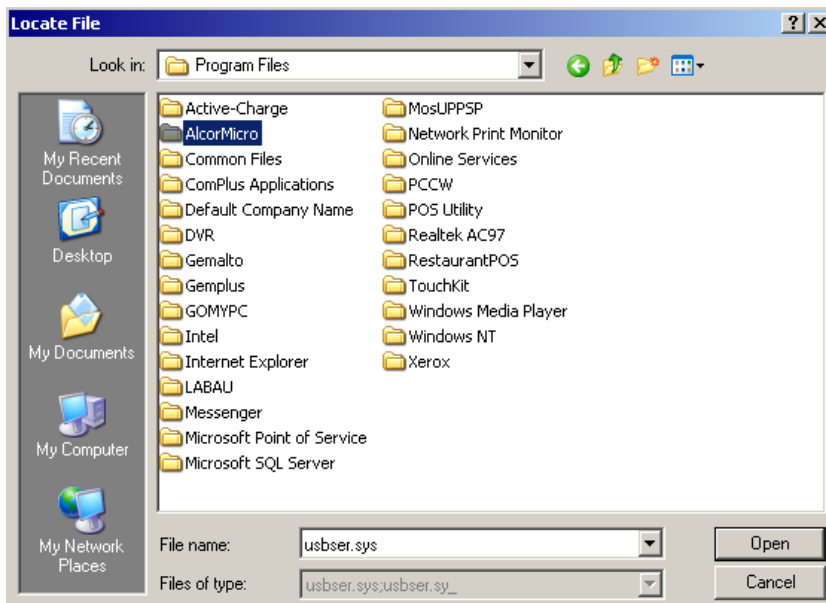
Please click “Finish”.



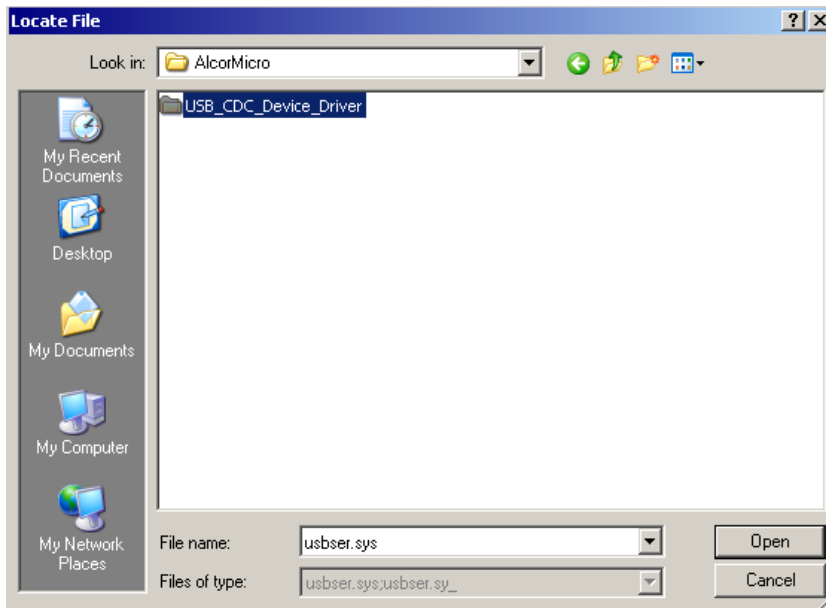
If a windows message asks for the path where the driver file is located, please click "Browse".



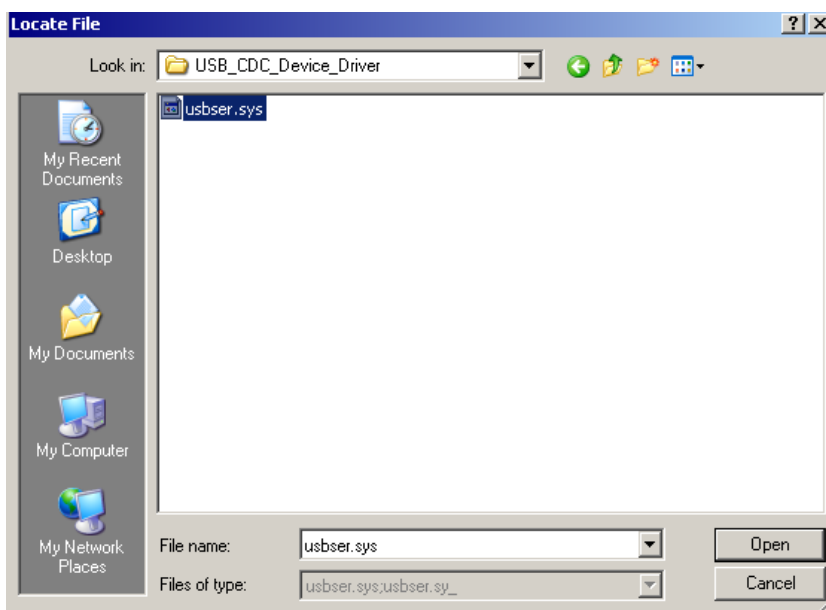
Open the "Program Files" in C hard disk drive.



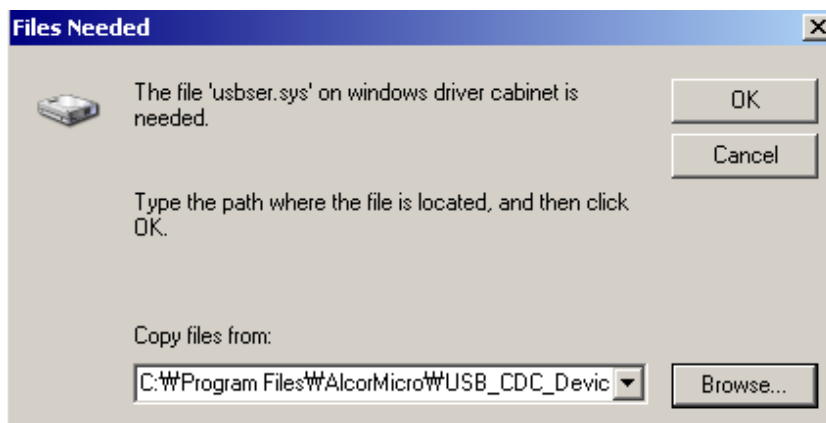
Search and open "AlcorMicro" in Program Files.



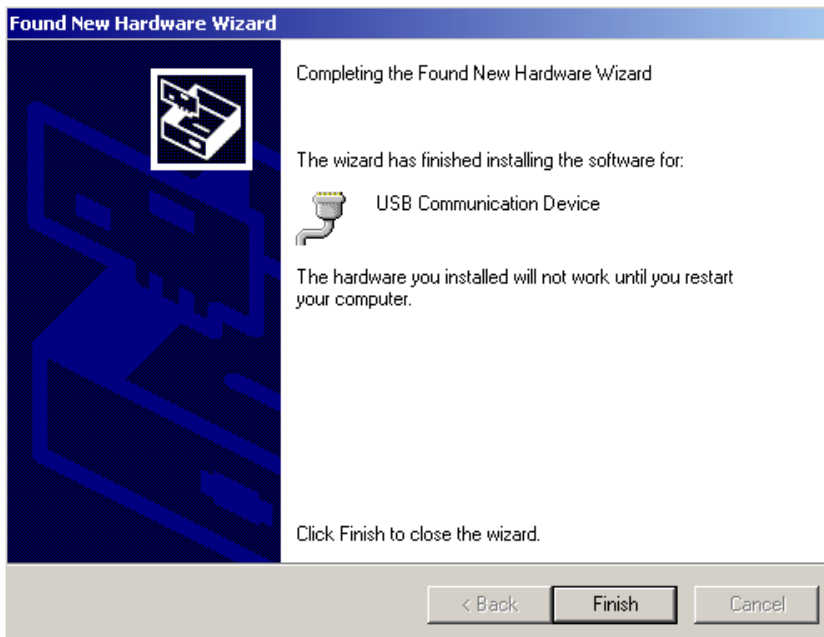
Open USB\_CDC\_Device\_Driver folder.



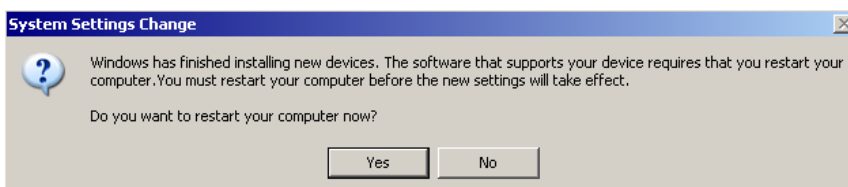
Select/click "usbser.sys" file and click "Open".



Click "OK"



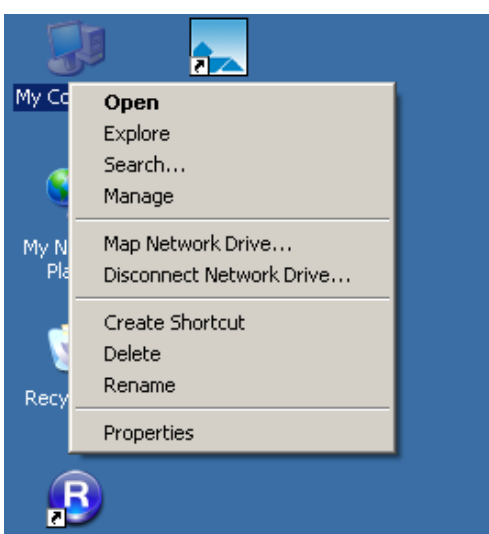
Click "Finish".



After installation is finished, Windows will ask you to restart POS/Computer. Press "Yes".



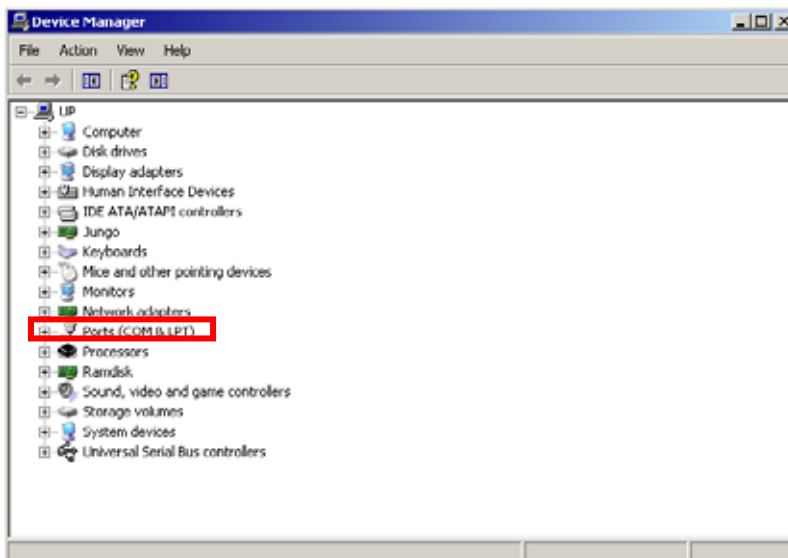
After restarting POS/Computer, you can see the alarm message "Found New Hardware" in system tray.



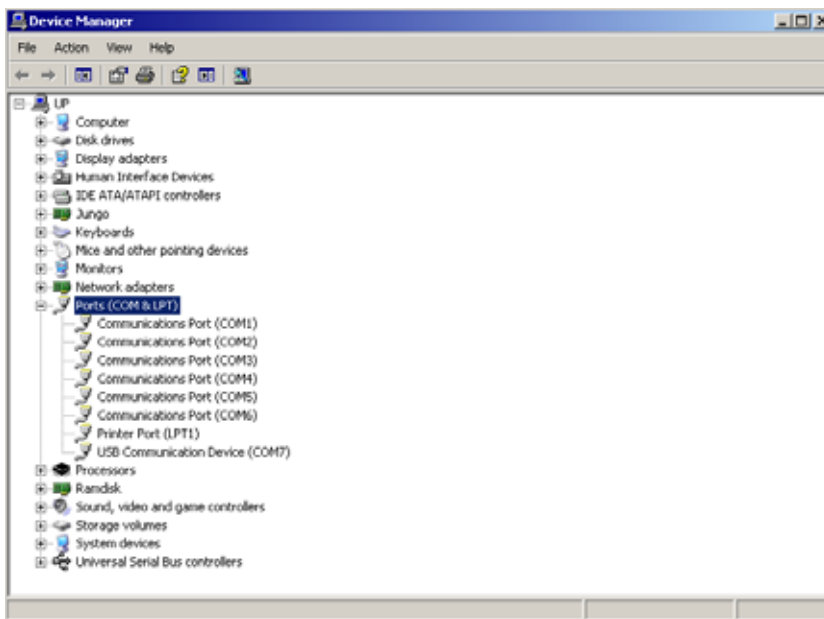
Then, go to My Computer on background, and select "Properties".



Click "Hardware" section and enter "Device Manager".



In Device Manager, you can check Ports (COM & LPT).



You can see a port connection named with “USB communication Device” if the printer USB port is completed successfully.

#### Notice

1. Even you connect a printer with USB interface, Windows communication port is Serial COM port.
2. Whenever you change USB port location, Serial COM port definition is changed also as following with the USB port.